

GREEN NEW DEAL SUPERSTUDIO

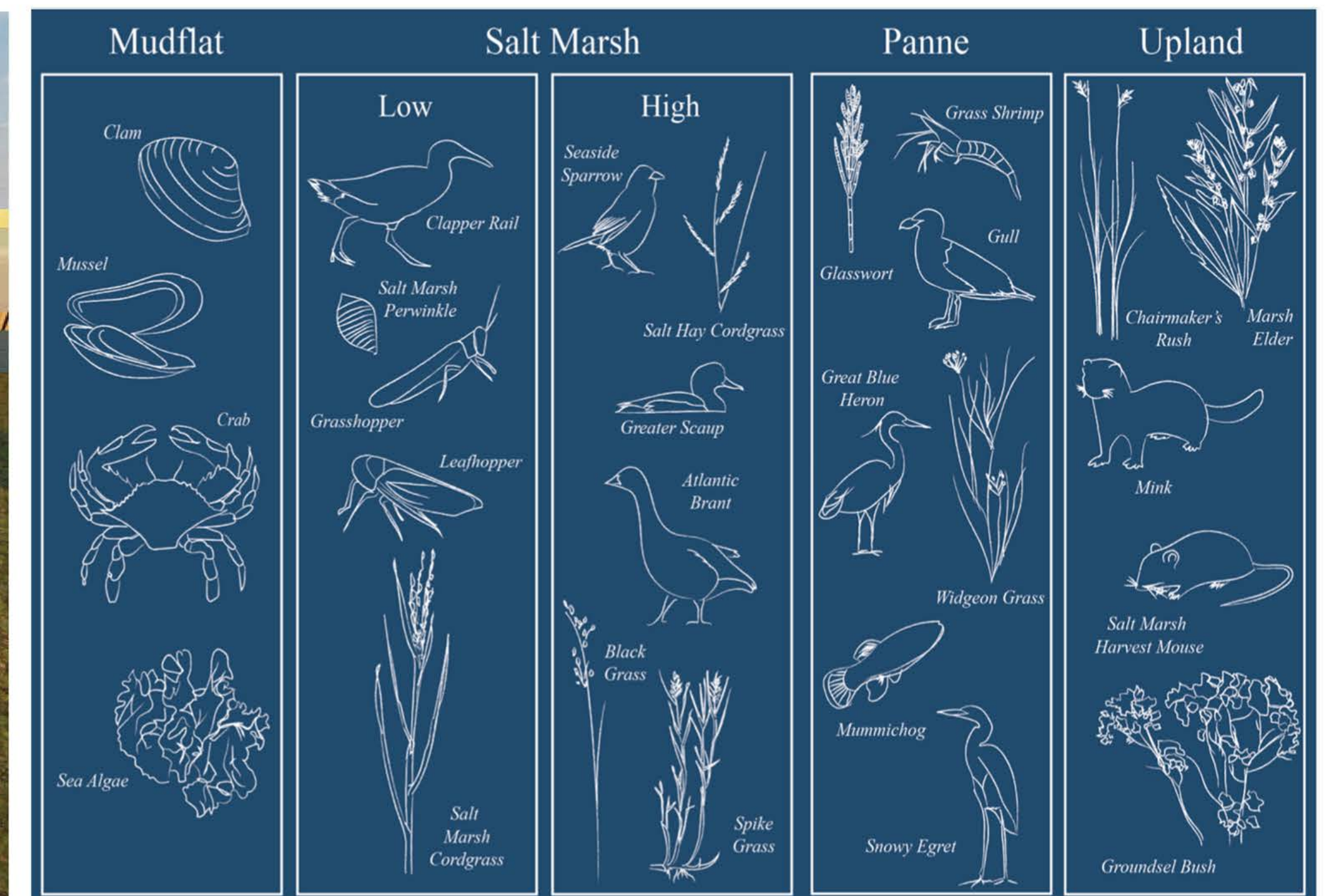
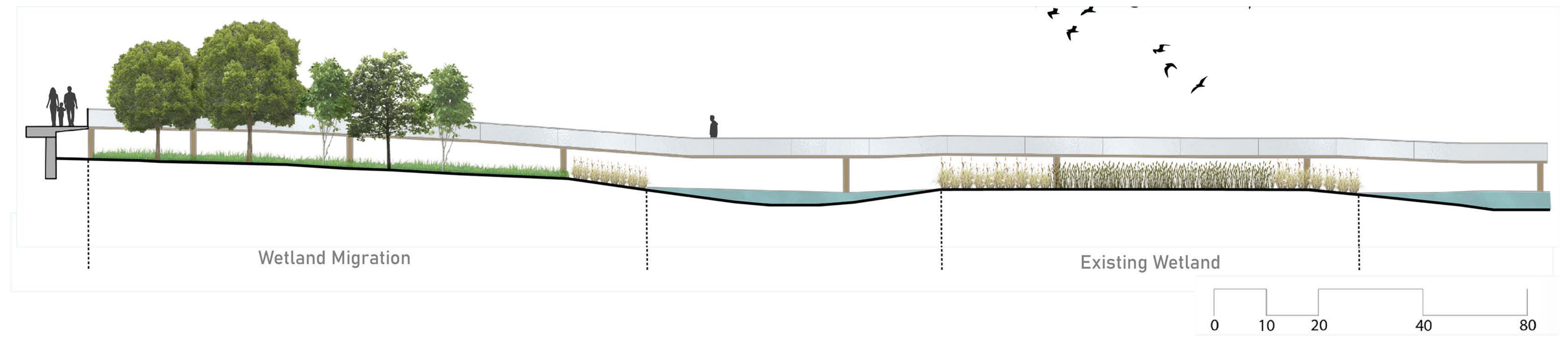
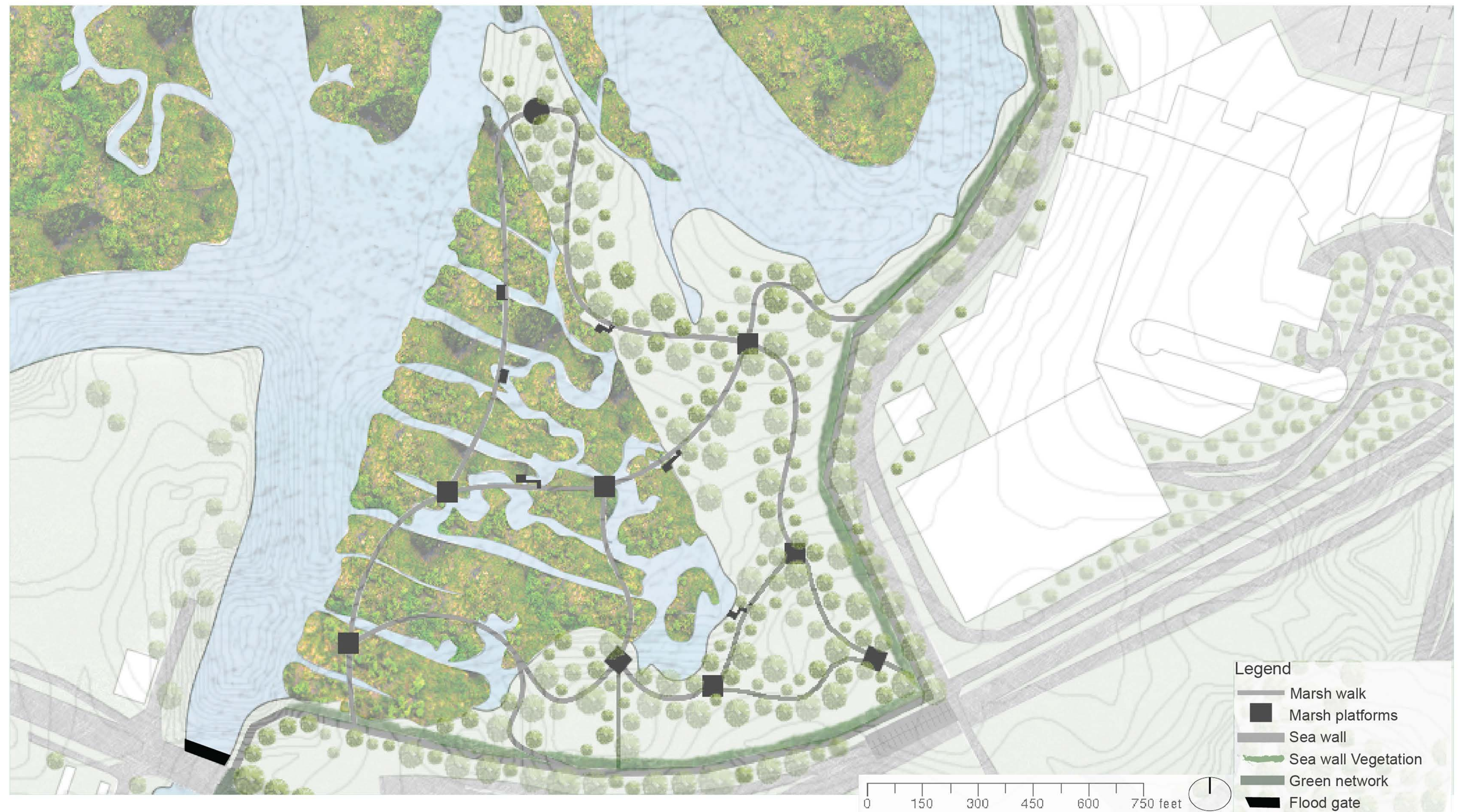
Green Network “keep the water out”



Marshwalk

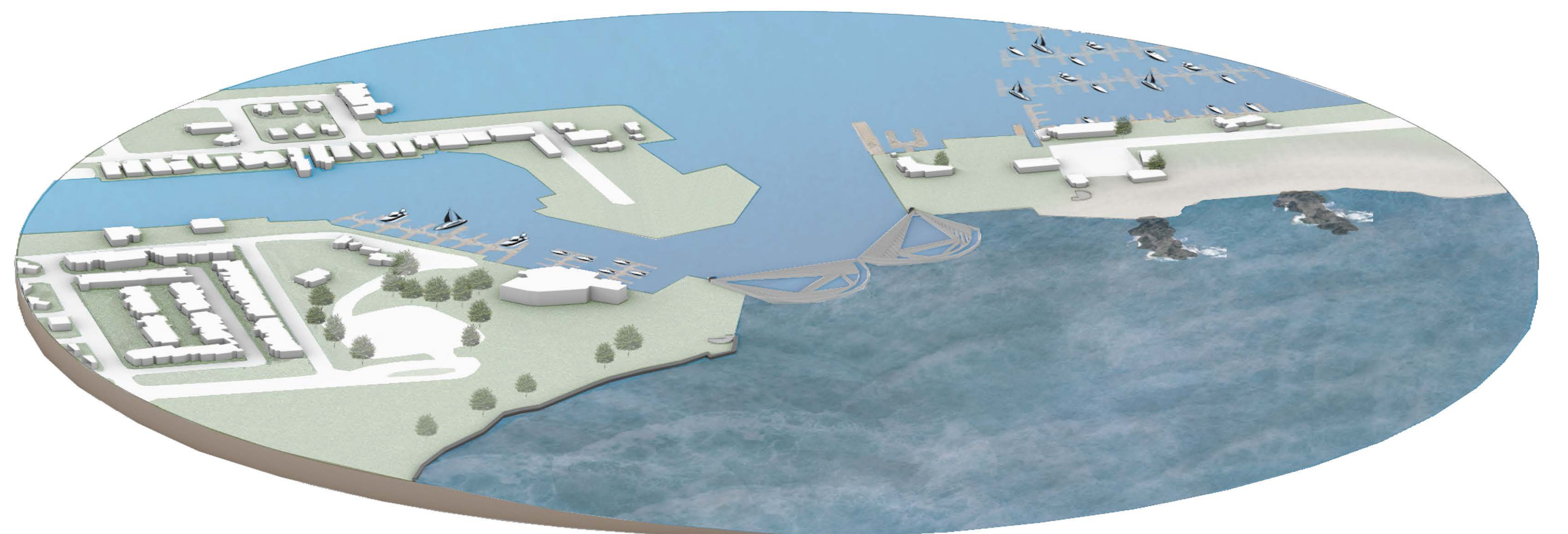
The marshes to the northwest of Atlantic City are essential, yet often overlooked aspect of the area. Founded on a barrier island, this area is a specialized ecosystem with specifically adapted flora and fauna. In order to provide recreational spaces as well as promote interaction with the ecology of the area, a marshwalk system has been implemented.

Boardwalk-like pathways meander through the site, with low lying platforms for respite and close inspection of the natural phenomena. The hope is to generate interest the ecological significance of the marshes, as well as in Atlantic City outside of the typical casino tourism scene. Access points connect the area to the greater green network.



Floodgates

Flood gates are installed at the mouth of the marina. Standing at 300 feet wide and 5 feet high, these gates operate on a motorized pivot, closing in response to high flood risk and protecting the bay.



Shoreline Defense

This design encompasses the entirety of the boardwalk and shoreline, preparing the area for storm surge scenarios. The dunes have been elevated to form a series of water retaining basins, and the boardwalk has been raised to serve as a last resort seawall.

