

# RUTGERS UNIVERSITY

# EQUINE SCIENCE QUARTERLY



From Our Stable To Yours

Spring 2017

## Inside the Issue:



06

**What We've  
Been Up To**



08

**In Memoriam  
Dr. David A.  
Meirs II**



10

**Horses 2017:  
The Best of  
the Best**

## The New Jersey Farm Bureau: How A Prominent Trade Association Is Helping Those In The Equine Community

**T**hose within the equine community can sometimes be faced with confusing regulations, issues with sales tax and how their business is taxed, or even how new legislation will affect them.

Some might decide to contact their lawyers, accountants, or local legislators, but many don't know that they have an all in one resource to assist them. A resource that even though they might not know it, is already helping them.

Horse owners and horse farm operators receive support for their interests from New Jersey Farm Bureau (NJFB). This has been the case for a long time, but may not be well known.

NJFB's support of agriculture takes the form of a supplementary, indirect type of help in an advocacy role, which in a hard-edged metropolitan state like New Jersey, can be crucial to sometimes

forgotten constituents such as the equine industry.

New Jersey Farm Bureau is the private, non-profit trade association that has represented farmers and agriculture in the state for almost 100 years. With its origins dating back to the Grange movement just after the First World War in 1919, the original purpose was to raise the political profile for farmers.

Society in those days still embraced an agrarian component as a part of daily life, so much so that consensus leadership in the state allowed for a prominent role for farmers and the NJFB. Membership in those initial decades exceeded 40,000.

Today, while NJFB operates as a farm organization in support of all agriculture, it seeks a personalized relationship with each commodity sector (such as the equine industry).

Agricultural producers may

# From The Clubhouse



Join us for  
Ag-Field Day at  
Rutgers Day!  
A day of fun for the  
whole family!

Dear Friends,

Mother Nature certainly has played her tricks on us since our last newsletter! I think I did more trail riding in January than I did in late February and March! Hopefully spring is finally here and we all get to spend more time outdoors with our beloved equine friends.

As usual Equine Science Center faculty, students and staff have been busy teaching, reaching out to our many publics, conducting research to benefit horses and the New Jersey horse industry, and hosting educational events for horse and horse farm owners alike.

On Friday, February 10 the Rutgers Equine Science Center hosted the Big Ten Academic Alliance at the Equine Exercise Physiology Lab. The group was treated to a high-speed treadmill demo, tour of the Equine Exercise Physiology Laboratory by Ken McKeever, and to a presentation by Karyn Malinowski of "Equine Science 4 Kids". For a picture of the event, go to [Page 6](#).

We all are still recovering from the Horses 2017 equine extravaganza held on March 18-19 at the Livingston Student Center in Piscataway. What an event! Speakers were outstanding and everyone had a great time learning and networking with the many vendors in attendance. I certainly was proud of Kyle Hartmann, Public Relations Specialist at the Center and all of our wonderful student volunteers who gave up most of their spring break week to help with the event. At the VIP Reception on Saturday night the new

Rutgers University Board for Equine Advancement (RUBEA) chairs, Amy Butewicz and Warren Zimmerman were introduced. See [Pages 10-12](#) for some of the highlights!

On April 1, Mike Westendorf and Carey Williams participated in the Department of Agriculture's Junior Breeders Symposium. Carey Williams also hosted a meet and greet for the RUTH herd. The event was held immediately following the conclusion of the Jr. Breeders Symposium and featured the new foster horses participating in the teaching herd for 2017. For pictures from both events go to [Pages 6-7](#).

On April 6 I presented the opening lecture to the Mid-Atlantic Nutrition Conference in Hunt Valley Maryland. The topic was one near and dear to my heart, "Physiology of Aging in the Horse". I included lots of images of my favorite senior equid, Lord Nelson!

On April 7 the Equine Exercise Physiology was featured, yet again, as NJAES hosted its Board of Managers and the New Jersey Farm Bureau's legislative tour.

Speaking of Farm Bureau, I would like to thank them for being partners with the Equine Science Center for many years. This comes with not only financial support for Center's work but also has resulted in a strong partnership between the two organizations as we support the well-being of the New Jersey horse industry which continues to face its challenges. I personally am a member of Farm Bureau and ask you all to consider doing so as an investment in the future of equestrian sport in the Garden State. See the lead story on [Page 1](#).

Don't forget to stop by and see us at the Red Barn on College Farm Road on April 29 from 10:00-3:00 on Ag Field Day at Rutgers Day. Treadmill demos will be at 1 and 2PM. Come and share memories of your time here at RU! Be sure to share the flyer on [Page 15](#) with friends!

All the Best,  
karyn

# PARTNERS



New Jersey Farm Bureau's primary purpose is to represent the overall interests and improve the financial well-being of farmers and our \$800 million industry. NJFB activities are supported through voluntary membership and annual dues. Members have access to:

- Staff assistance on farming issues and regulatory problems.
- Educational workshops on topical issues such as farm labor, wildlife damage, and zoning.
- Weekly updates on legislation news and regulations affecting all aspects of farming.

It pays to be a NJ Farm Bureau member! For a full list of membership levels and benefits, or to sign up, visit: [www.njfb.org](http://www.njfb.org).



UMH Properties, Inc., is a real estate investment trust that owns and operates manufactured home communities in seven states throughout the north-east.

UMH has been in business since 1968, operating as a public company since 1985. Owning a portfolio of over 90 manufactured home communities, housing approximately 15,700 home sites.

In addition, owning over 810 acres of land for the development of new sites. It is our mission as a company to provide the best quality affordable home for the hard working residents of Pennsylvania.

UMH communities are perfect for residents of all ages, let us help up you find your dream home today.

For more information about UMH Properties, Inc., please visit: [www.umh.com](http://www.umh.com)



The New Jersey Department of Agriculture (NJDA) is an agency which oversees programs that serve virtually all New Jersey citizens. One of the Department's major priorities is to promote, protect and serve the Garden State's diverse agriculture and agribusiness industries.

In addition to the programs we offer to support production agriculture, NJDA also manages programs that feed schoolchildren, distribute surplus federal foods to soup kitchens and pantries that serve our needy citizens, conserve precious soil and water resources, protect farmland from development and preserve it for future agricultural use, expand export markets for fresh and processed agricultural products, and promote our commercial fishing industry, and administer the complete program of agriculture, food and natural resource education, which includes the State FFA Association.

For more information about NJDA, please visit: [www.nj.gov/agriculture](http://www.nj.gov/agriculture)



Merial recognizes that diseases pose a significant threat to the health and well-being of horses, and that's why Merial is at the forefront of supporting horse owners and veterinarians in their efforts to keep horses healthy.

In addition to providing a wide array of vaccines and pharmaceutical products for horses, Merial engages veterinarians and horse owners in educational programs and online tools to build a greater awareness of diseases and the importance of prevention.

These resources, along with industry-leading products enable us to help veterinarians and horse owners keep horses healthy.

## UPCOMING 2017 EVENTS

### Ag-Field Day Part of Rutgers Day

Saturday, April 29, 2017

Red Barn - Cook Farm  
Rutgers, The State  
University of New Jersey  
New Brunswick, NJ 08901

[ESC@njaes.rutgers.edu](mailto:ESC@njaes.rutgers.edu)

### Fair Winds Farm Open House

Sunday, June 25, 2017

74 Red Valley Road  
Cream Ridge, New Jersey 08514

[fairwindsfarm31@verizon.net](mailto:fairwindsfarm31@verizon.net)

### Equine Science Center's Summer Showcase

Wednesday, July 12, 2016

Red Barn - Cook Farm  
Rutgers, The State  
University of New Jersey  
New Brunswick, NJ 08901

[ESC@njaes.rutgers.edu](mailto:ESC@njaes.rutgers.edu)

### 2017 Hambletonian Continuing Education Seminar

Friday, August 4, 2017

Hilton Meadowlands Hotel  
2 Meadowlands Plaza  
East Rutherford, NJ 07073

[Gordon@firstchoicemarketing.us](mailto:Gordon@firstchoicemarketing.us)

For more events, visit our website @ [esc.rutgers.edu](http://esc.rutgers.edu)



Ryck Suydam (right), President of the New Jersey Farm Bureau, and Ed Wengryn (left), a New Jersey Farm Bureau Representative, speak with attendees of “Horses 2017: The Best of the Best” to explain how NJFB represents all equine enthusiasts, even if they aren’t members.

not realize this, but public policy (in some key areas) considers agriculture irrespective of commodity interest. An example of this would be the regulations on farmland assessment. This regulation requires at least 5 acres of land to be actively devoted to production of an agriculture commodity, which must be sold and amount to at least \$1000 per year. This eligibility standard is the same for all agricultural sectors.

So, NJFB encourages strong commodity organization activity even as it addresses general farm policies and concerns universally. This is especially true in its approach to equine issues and concerns.

“There are three functional aspects to Farm Bureau’s current work that can summarize its ongoing operations,” says Peter Furey, NJFB Executive Director, they include “in-house expertise, leadership roles with other agricultural institutions, and a new initiative to build an ever-expanding statewide coalition of commodity/rural advocates.”

While the people at the New Jersey Farm Bureau get involved with many types of work in service to its membership, being the “voice of agriculture” and having the expertise to understand the issues is perhaps its core function.

Due to its many years of experience dealing with policy, economics and regulations in many forms, NJFB is able to share with its members a better understanding of how these things will specifically affect them. In the case of the New Jersey horse industry, these could range from the charge of sales tax on stall rental at boarding facilities to finding avenues of revenue in support of the struggling racing sector of the industry.

“All horse owners and horse farm operators in New Jersey benefit from the advocacy work NJFB conducts on their behalf, irrespective of whether or not they own a farm” says Karyn Malinowski, director of the Rutgers Equine Science Center. “Once someone becomes a member their direct access to these advocates can become priceless.”

The NJFB also works proactively by meeting with key members of the State Legislature on issues of importance to agriculture. Farm Bureau’s relationship with these policy decision makers has allowed them to help shape these policies for not only the betterment of the farmers, but for the betterment of agricultural legislation and New Jersey.

The institutional role NJFB plays is equally important. New Jersey agricultural entities were organized through legislative action that began

in the late 1800's. The Legislature created a State Board of Agriculture (SBOA) and New Jersey Department of Agriculture (NJDA) as the state public sector entities, and then recognized the federal land grant system by making Rutgers University the land grant institution for New Jersey. The New Jersey Agricultural Experiment Station (NJAES) Board of Managers provides an advisory role for its affairs.

The New Jersey Farm Bureau movement, incorporated the county boards of agriculture to create private sector agriculture entities. Rather than establishing individual county Farm Bureau units, these county boards of agriculture serve in an advisory capacity to the Farm Bureau. This blueprint helped to form the "three-legged stool" structure (NJDA, Rutgers, Farm Bureau) which currently exists.

The third component of New Jersey Farm Bureau's current operations is a re-branding and consumer education process. Much has changed in recent years with farming and agribusiness. As society has changed, there has become an expanding gap between farmers and consumers. The everyday consumer doesn't realize where their food comes from, or just how close a farm might be to their house. While NJFB values its traditions, it also realizes that the general public needs to be reconnected to agriculture.

What New Jersey Farm Bureau wants now is to have its solid history and structure as advocates for agriculture serve as the foundation to a large coalition of rural and commodity-based New Jerseyans. Currently at 10,000 members, NJFB hopes to build up its membership which will help bridge the gap between the agricultural community and general public.

Equine interests and Farm Bureau/county boards of agriculture are a good example of growing new membership relationships on top of an existing foundation. NJFB now has over 600 dues-paying (\$150) regular members who

designate "equine" as their primary commodity affiliation.

"That's mostly farm owners, but there should be no obstacle to others in the industry (employees, racetracks, sport competition/recreation horse owners) to joining as an associate (\$60) or farming supporter (\$25) member" says Furey. "While currently at 10,000 members there is no reason that through coalition building that we couldn't build it to 20, 30 or even 40,000 members again."

There have been many individuals through the recent years from equine agriculture who stepped into prominent roles in the "institutional ag" world, men and women like Dr. Steve Dey, Taylor Palmer, Jr., Bob Tucker, Dr. David Meirs, Mary Jo Herbert and Ann Dorsett. Each of them served a four-year term on the State Board of Agriculture and made contributions on behalf of the New Jersey horse industry.

"Horse owners in New Jersey should invest in themselves by building membership numbers in New Jersey Farm Bureau. We then build the legislative influence to get behind the equine industry on critical issues" says Malinowski. "Legislators listen to constituents – the more who speak in a unified voice, the better. New Jersey's horse industry deserves the attention to public policy that Farm Bureau can deliver with its political network and expertise in policy."



NJFB President Ryck Suydam meets with Karyn Malinowski, Director of the Equine Science Center, and Jacqueline Osborn a attendee from Long Island.

# What We've Been Up To

## *Big 10 Academic Alliance Tour*



On Friday, February 10 the Rutgers Equine Science Center hosted the Big Ten Academic Alliance at the Equine Exercise Physiology Lab. The alliance consists of 14 universities in the Big Ten Athletic Conference. Visitors from Iowa State University, Michigan State University, and Purdue University (all land-grant institutions) were accompanied by Vice-President for Academic Affairs and Administration, Karen Stubaus to view one of the many laboratories at Rutgers University. The group was treated to a high-speed treadmill demo, tour of the Equine Exercise Physiology Laboratory by Dr. Kenneth H. McKeever, and to a presentation by Dr. Karyn Malinowski of “Equine Science 4 Kids”.

## *2017 Junior Breeders Symposium*



April 1st was no fooling! The Junior Breeder Symposium held at the Rutgers Cook Campus farm was the biggest yet! With over 300 parents, volunteers and ‘Junior Breeders’ it was largely successful for all species represented. The horse session had between 50 and 60 participants throughout the day who learned all about horse vaccines and diseases (by Dr. Meredith Steudel, NJDA), biosecurity (by Dr. Leslie Serephin, APHIS) and sportsmanship (with a rider panel). The day ended with the famous Jeopardy game with questions from the morning sessions. Even the adults joined in on the Jeopardy fun! If you missed it this year, stay tuned for a save the date for next year’s program!

# *RUTH Herd Meet-N-Greet*

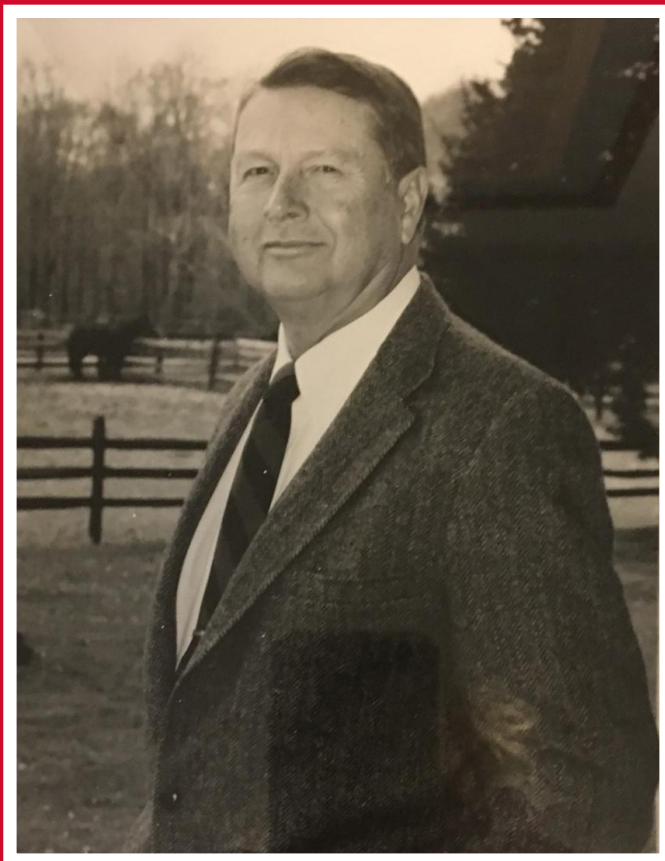


The 2017 Meet-n-Greet was held on April 1st at the Cook Campus Farm, Red Barn. The Class of 2017 horses include: foster horses Dosey Doe (aka Daisy) a Halflinger from the Arabian Rescue Mission; Bunny from the Saddlebred Rescue; Olaf also from the Saddlebred Rescue; and Rakete (aka Rocky) from Second Call Thoroughbred Adoption; and permanent horses Gus (Paint); Wiser (Thoroughbred), Molly (Standardbred) and Marci (Standardbred). For 6 weeks, the students and horses work diligently to transform from learning the safety basics, to executing difficult patterns with confidence. The foster horses will be available for adoption after Ag Field Day through their parent adoption agencies. Check out all the happenings with the RUTH horses on their Facebook page: <https://goo.gl/NUWNTK>

# *Legislative Tour*



On Friday April 7th, the Equine Science Center was a stop on the Legislative tour organized by the New Jersey Agricultural Experiment Station Board of Managers, the New Jersey Farm Bureau, and the New Jersey State Board of Agriculture (part of the New Jersey Department of Agriculture). The tour highlighted some of the phenomenal work that comes from the New Agricultural Experiment Station, and showed the New Jersey Legislators the “Horsepower” of a program that we have!



## IN MEMORIAM

# Dr. David A. Meirs II

1929 - 2017

**Rutgers Alumnus, Founding  
Member of the Rutgers University  
Board for Equine Advancement,  
and a Cornerstone of the New  
Jersey Equine Industry**

**D**avid A. Meirs, II, VMD, who received his Bachelor of Science degree from Rutgers University in 1950, passed away on Monday, March 27 at the age of 87.

After graduating from the University of Pennsylvania's School of Veterinary Medicine, Dr. Meirs established the Walnridge Equine clinic in 1965.

The clinic is known worldwide and serves as a living legacy to 'Doc' Meirs, as does Walnridge Farm, Inc., a 300 acre facility that has been in the Meirs/Waln family since 1830 and specializes in the breeding and raising of Standardbred horses.

Dr. Meirs was instrumental in helping build the equine program at Rutgers University's Cook College and in the development of the Rutgers Equine Science Center.

Center director, Karyn Malinowski recalls that Dr. Meirs was infuriated in the early 1980's when the Dean of Cook College and the Director of the New Jersey Agricultural Experiment Station refused to meet with him and Dr. George Poppensiek, then Dean of the Veterinary School at Cornell to discuss the importance of horses to the agricultural landscape of the Northeast, especially to New Jersey.

It was only with Doc Meirs' persistence that he befriended Dean Stephen Kleinschuster who had the foresight to invest in the development of the equine science program at Rutgers University.

He later served as chair of the Rutgers University Board for Equine Advancement which began fundraising for the development of the Equine Science Center.

Besides his commitment to Rutgers, Dr. Meirs was actively involved in many other veterinary and horse racing associations.





Dr. David A. Meirs II was honored in 2008 by the Equine Science Center at the annual “Evening of Science & Celebration”. Laurel A. Van Leer, a prominent alumna and member of the Rutgers Board of Trustees, presented Meirs with a rare Kilmer Oak pen. The writing instrument was hand-crafted from one of the few remaining pieces of the massive oak tree that once grew on the Cook campus at Rutgers and was the inspiration for New Brunswick native Joyce Kilmer’s famous poem, “Trees.” (From the left to right: Laurel A. Van Leer, Sandra Denarski, Dr. Meirs, Dr. Karyn Malinowski, Caroline Meirs and Mary Ann Meirs).

He served as president of the NJ Board of Veterinary Medical Examiners, founded the NJ Equine Practitioners Association, served as a director of the Society for Theriogenology, was appointed by Governor McGreevy to the NJ Sire Stakes board, and was a past president of both the Veterinary Medical Alumni Association, University of Pennsylvania and the Philadelphia Society for Promoting Agriculture.

Karyn Malinowski recalls Dr. Meirs’ voracious appetite for the scientific literature, his willingness to support equine research projects at Walnridge, and how emotional he would become when talking about a dear friend or favorite horse.

His numerous awards including the Governor’s Trophy for Horseperson of the Year, 1998, and the George H. Cook Award, for Distinguished Alumni, Cook College, Rutgers University, 2000 reflect the level of respect he held with all who knew him.

If you are interested in making a memorial contribution in Dr. Meirs’ name, the following organizations have been selected by the family for donations:

Rutgers University Equine Science Center  
 Attn: Dr. Karyn Malinowski  
 Administrative Services Building II  
 57 US Hwy 1, New Brunswick, N.J. 08901

Standardbred Retirement Foundation  
 353 Sweetmans Lane  
 Millstone Twp., N.J. 08535

Standardbred Breeders and  
 Owners Association Trotpac  
 64 Business Rt. 33  
 Manalapan, N.J. 07726



## Horses 2017: The Best of the Best

A weekend full of presentations offers equine enthusiasts of all levels a unique opportunity to hear from professionals in all aspects of the equine industry

The Equine Science Center concluded its 15-Year Anniversary Celebration with a weekend long extravaganza.

On Saturday, March 18, and Sunday, March 19, 2017, the Center hosted a premier equine conference for horse enthusiasts as well as veterinarians and serious equine professionals.

Held at Rutgers University's newest, state of the art conference facility, The Livingston Student Center in Piscataway, attendees were treated to two full days of equine-related education.

The theme of "Horses 2017" featured "the best of the best", with the program highlighting the most popular speakers featured at Center programs from the past 15 years.

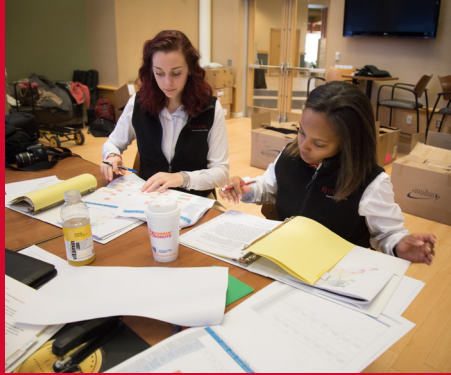
Featured keynotes included Scientific Journalist Wendy Williams, and Dr. Jeff Thomason from the University of Guelph. Breakout sessions allowed attendees to spend quality time with some of the best equine specialists in the business.

Each day ended with an hour long "Ask the Experts" question and answer panel of the day's featured speakers.

A VIP Reception was held for dignitaries and donors on Saturday evening where the new Co-Chairs of the Rutgers University Board for Equine Advancement, Amy Butewicz and Warren Zimmerman, were introduced.

The Center thanks all speakers, sponsors, vendors, and attendees for making this a truly memorable event.





For more pictures from the event please visit:  
<https://goo.gl/gqXY7f>



For more pictures from the event please visit:  
<https://goo.gl/gqXY7f>



# Doris C. Murphy

## Endowed Scholarship in Equine Science

The Equine Science Center will be accepting applications for the Doris C. Murphy Scholarship until May 1st, of each calendar year.

The scholarship(s) will be awarded for the following academic year. Please see the application form on the right and scholarship details below.

Rutgers Equine Science Center and the Department of Animal Sciences at the School of Environmental and Biological Sciences at Rutgers, The State University of New Jersey, are pleased to announce the availability of financial assistance to undergraduate women who are New Jersey residents majoring in Animal Sciences with a concentration in Equine Science.

Scholarships will be awarded annually to full-time undergraduate Rutgers University students (including at least one incoming student).

Criteria include New Jersey residency, acceptance or current enrollment at the School of Environmental and Biological Sciences, academic merit, financial need, and demonstrated interest in equine science. Scholarships may be renewed annually with the approval of the scholarship selection committee.

The Doris C. Murphy Endowed Scholarship in Equine Science was created to honor the memory of a woman who loved animals. Ms. Murphy was born in Jersey City, moved to Dumont, and worked for the Ford Motor Company in Newark.

She and her husband had no children, and shortly before her death in 1998, she contacted her financial advisor, Kate Sweeney of Morgan Stanley and expressed her desire to support animal studies.

Ms. Sweeney, a Cook College alumna, suggested the equine science program as an appropriate beneficiary, and as Ms. Murphy was also very supportive of women's education, the endowed scholarship is offered to women students majoring in Animal Sciences with an equine science interest. Thus, the scholarship reflects Doris C. Murphy's love of animals and her deep interest in encouraging young women to complete their academic studies.

To Apply for the scholarship, please go to:

<https://goo.gl/q4BpxI>

## Ag Field Day at Rutgers Day



### Ag Field Day 2017: Saturday, April 29

Ag Field Day is an annual celebration of our community spirit and of the close ties enjoyed by [Rutgers School of Environmental and Biological Sciences](#) students, faculty, staff, alumni, and volunteers, and New Jersey residents. It is held on the last Saturday of April on the [G. H. Cook Campus](#) of Rutgers in New Brunswick, N.J.

Ag Field Day is part of a larger, university-wide [Rutgers Day](#). For decades, Ag Field Day has been an opportunity for members of the public to learn about and participate in our programs. Rutgers Day built on that tradition and invited the community to learn more about Rutgers University through tours, performances, hands-on activities, demonstrations, exhibits, and lectures across the G. H. Cook/Douglass, Busch, Livingston, and College Avenue Campuses.

### The History of Ag Field Day

The year was 1906. The State Board of Agriculture decided there was a need for New Jersey farmers to become better acquainted with the experiments taking place at the [Rutgers New Jersey Agricultural Experiment Station \(NJAES\)](#). On August 17 of that year, the first Field Day (the original name for Ag Field Day) was held at the College Farm.

About 800 people attended, and all indications were that the event was an unqualified success. It was such a hit, in fact, that Field Day became an annual affair.

By 1917, Rutgers and the New Jersey Agricultural Experiment Station assumed full responsibility for the event. Field Day was expanded to include lectures, demonstrations, and tours that attracted more people of varied backgrounds and interests.

By the late 1920s, the annual Field Day was drawing 3,000 to 4,000 people, including increasing numbers of urban and suburban residents. View a program from the [45th Ag Field Day \(3.7MB PDF\)](#) in 1960.

Today, Ag Field Day, now part of the university-wide [Rutgers Day](#), attracts a much larger crowd to the George H. Cook Campus to learn about the university's cutting-edge research, education, and outreach programs.

Field Day tractor demonstrations are now a thing of the past. But while Ag Field Day no longer caters specifically to farmers, the reporting of scientific findings and demonstrations of science-based solutions important to New Jerseyans continue to take center stage.

Note: Much of the preceding article was derived from Woodward and Waller's *New Jersey Agricultural Experiment Station--1880-1930*.

**RED BARN**

**APRIL 29**

cook farm  
college farm road  
new brunswick, nj

**10:00AM - 4:00PM**

**AG FIELD DAY AT  
RUTGERS DAY**

**HIGH-SPEED HORSES**

**Cook Farm/Red Barn  
1:00PM & 2:00PM  
Arrive 30 Min Early**

watch a horse run on  
a high-speed treadmill  
and learn about the  
research and education  
conducted by the center

**2017**

# Contact Us:

**Karyn Malinowski**

*Director*

**Equine Science Center**

**Phone : 848-932-9419**

**E-Mail : [karynmal@njaes.rutgers.edu](mailto:karynmal@njaes.rutgers.edu)**

**Kyle Hartmann**

*Public Relations Specialist*

**Equine Science Center**

**Phone : 848-932-9419**

**E-Mail : [kylehart@njaes.rutgers.edu](mailto:kylehart@njaes.rutgers.edu)**

**Melissa McKillip**

*Vice-Dean for Advancement*

**School of Environmental and Biological Sciences**

**Phone : 848-932-4214**

**E-Mail : [melissa.mckillip@rutgers.edu](mailto:melissa.mckillip@rutgers.edu)**



**esc.rutgers.edu**

