

Van Buskirk Island Park

Conceptual Idea for a Historic Vernacular Landscape

2/24/2012



Project

Van Buskrik Island County Park
New Milford Plant of the Hackensack Water
Company County Historic Site
New Milford Avenue, Elms Street and Madison
Avenue
Boroughs of Oradell and New Milford
County of Bergen, New Jersey

Oradell: part of Block 120, lot 1; Block 121, lot 6;
Block 122, lot 1; Block 123, lot 1; Block 1213

New Milford: Block 1301, lot 1*,
lot 2, Block 1308, lot 1; part of Block 1309, lot 1*;
Block 1524, lot 1; Block 1523 lot 2
(*not owned by Bergen County)

Total study area: 39 acres

Prepared by

Dep. of Landscape Architecture
Center for Urban Environmental Sustainability
School of Environmental and Biological Sciences

Rutgers,
The State University of New Jersey
93 Lipman Drive,
New Brunswick, NJ 08901-8524
Telephone: 848.932.9313

Wolfram Hoefer, Dr. Ing.
Assistant Professor
Lead Designer

Beth Ravit, PhD
Senior Research Specialist
Co-Investigator

Rutgers Student Team:
Mukta Jadhav, Alex Kozar, Edward Krafcik,
April Maly, Tyson Triplett

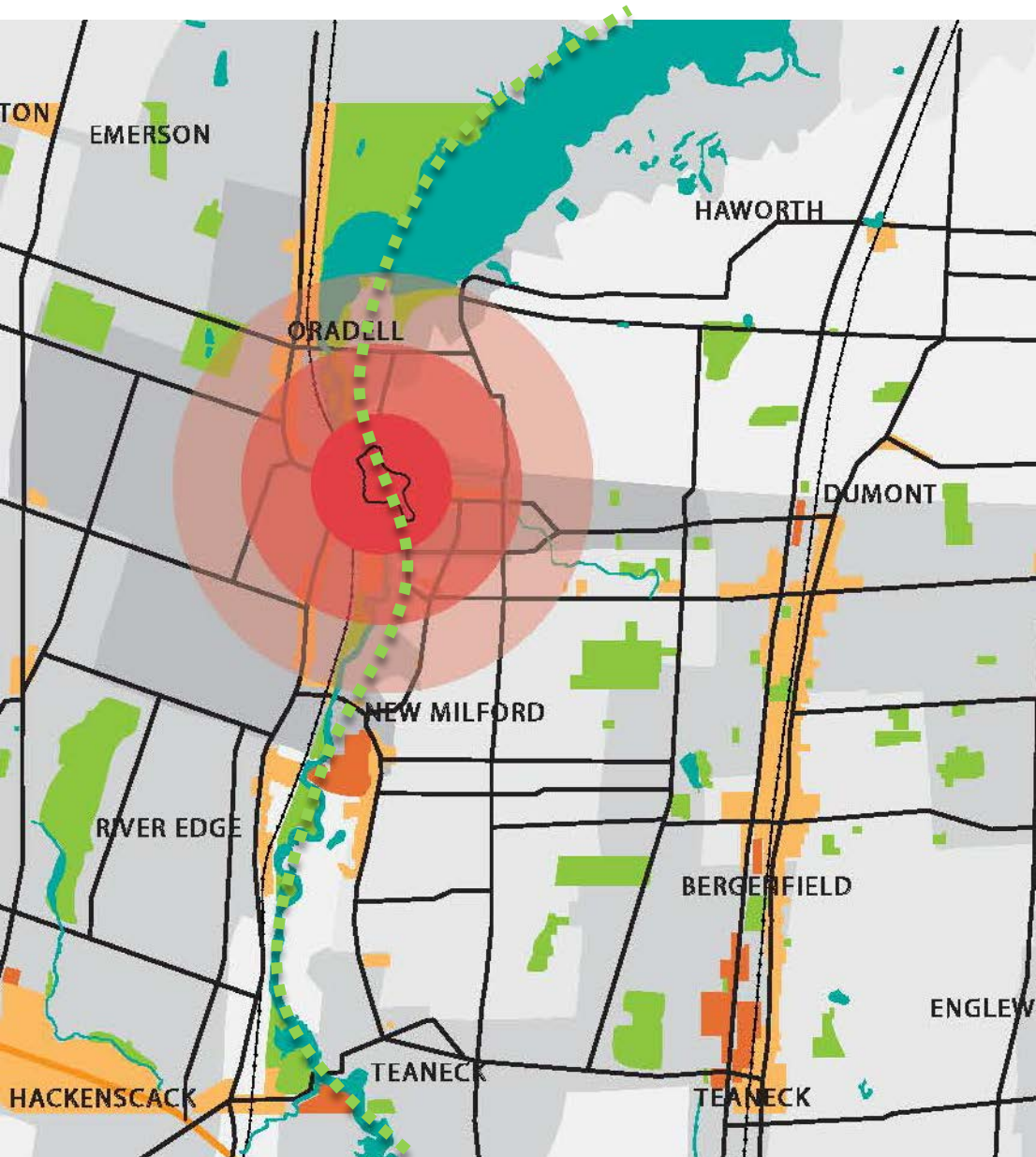
Prepared for and Funding

Division of Cultural and Historic Affairs
Bergen County Department of Parks
One Bergen Plaza, 4th Floor
Hackensack, NJ 07601-7076

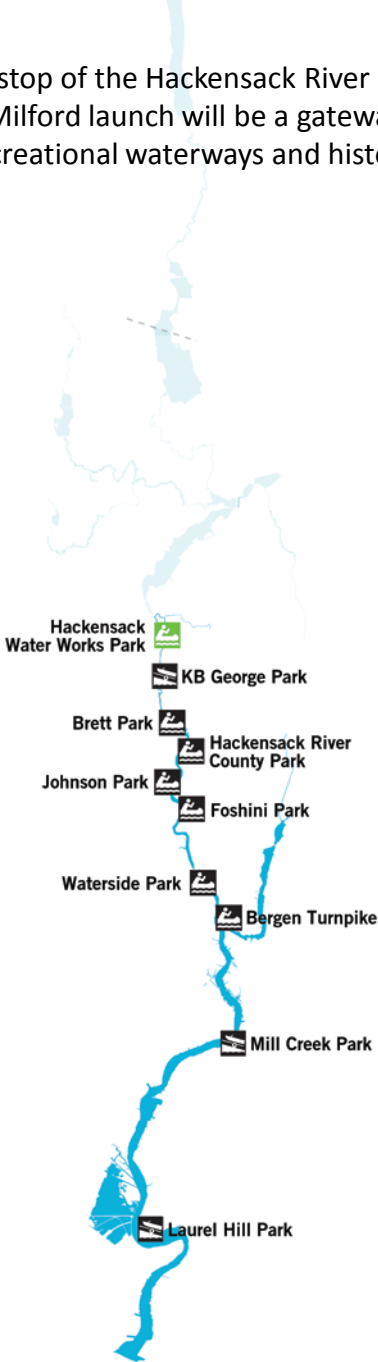
This project was funded by a grant from the Bergen
County Historic Preservation Trust Fund, a part of
the Bergen County Open Space, Recreation,
Farmland and Historic Preservation Trust Fund.

2/24/2012

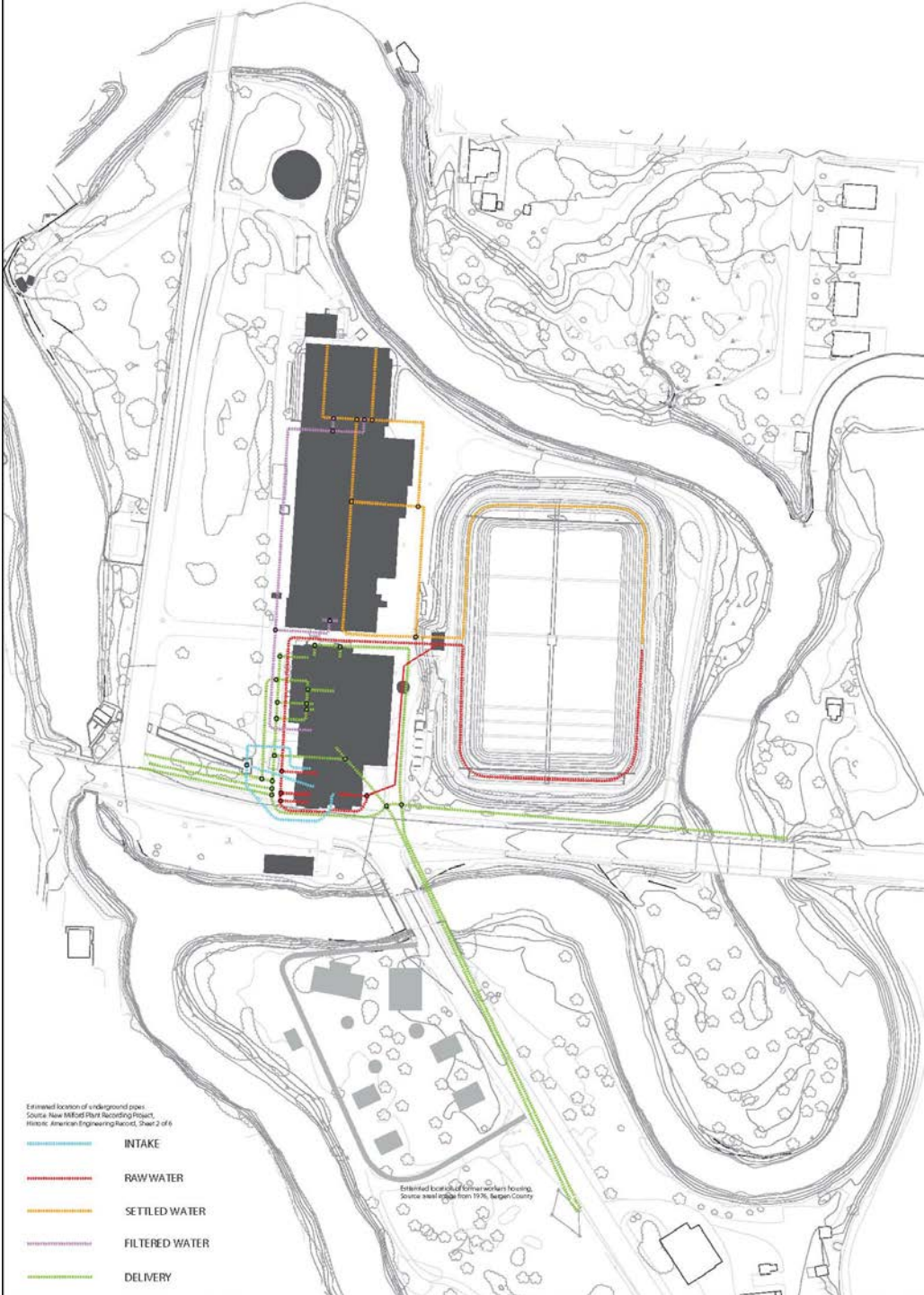
The park can become an important stepping stone for a greenway along the Hackensack River



As the northern-most stop of the Hackensack River Canoe Trail, the New Milford launch will be a gateway to Bergen County’s recreational waterways and historic trade routes.



Way of the Water



Interpretation of the *Way of the Water* and considerations of building access guide the circulation concept.

Primary Pathways

The governing principal in the movement of water through the facility is a network of straight pipes connected by joints for redirection. The main pathway system that visitors will use to walk through the park will parallel this pipe network. The “joints” will be near viewing and resting.

Secondary Pathways

To entice visitors to explore the park’s more remote and wooded areas, a system of smaller, secondary paths will be available.



Parking

Sustainable parking solutions that avoid any burden on the adjacent neighborhood will be essential.



Parking
Option A

261 cars
3 buses



Parking
Option B

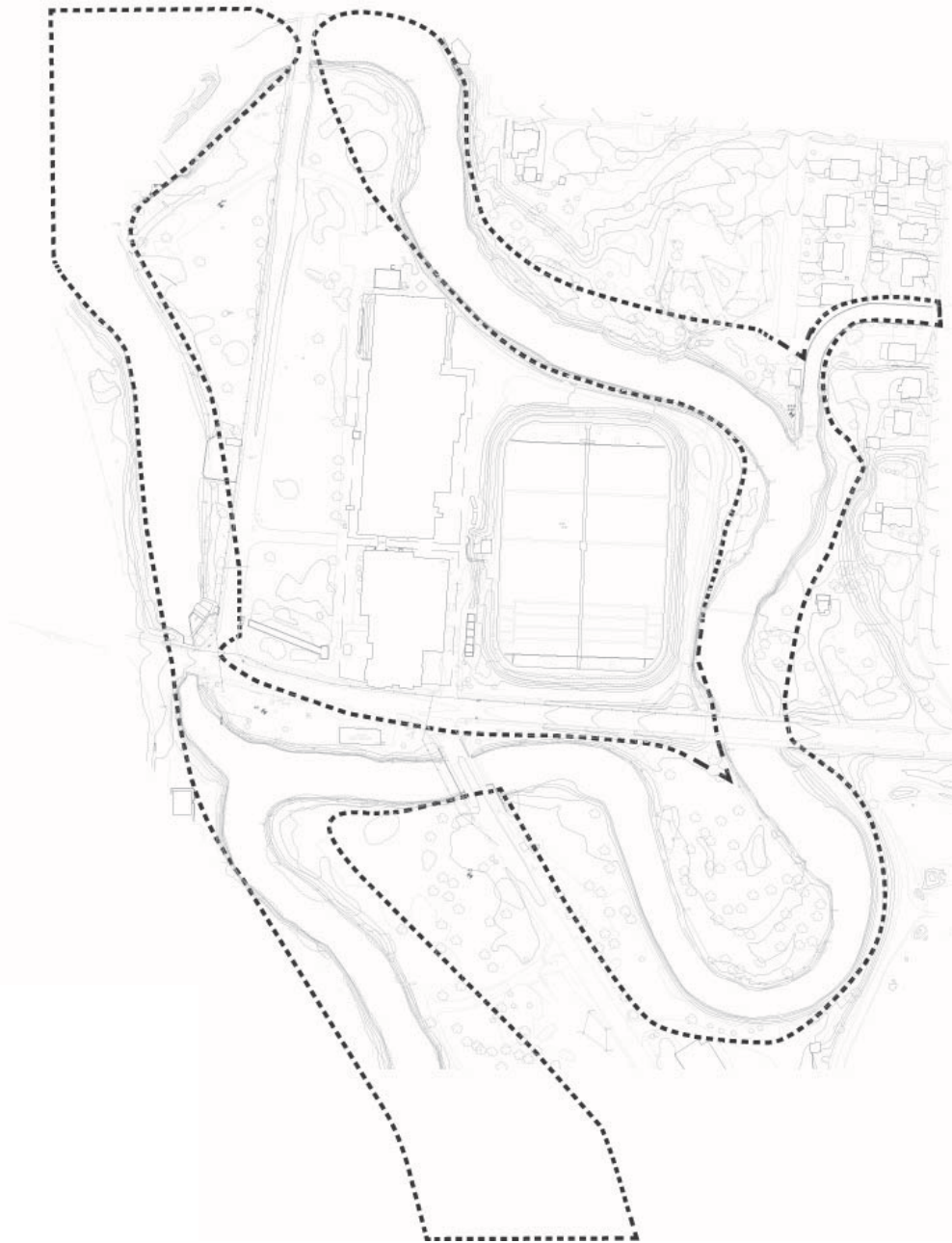
325 cars
3 buses



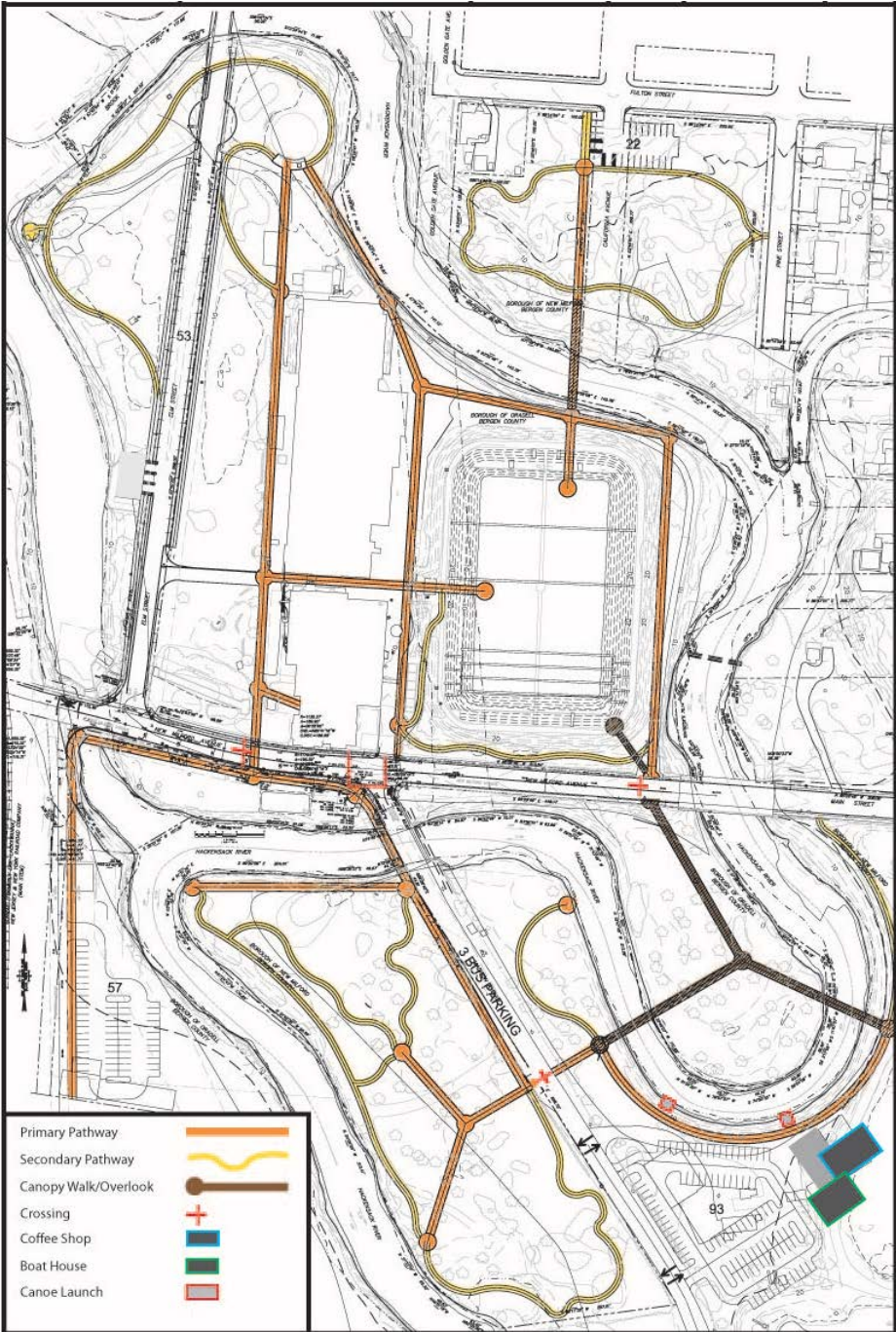
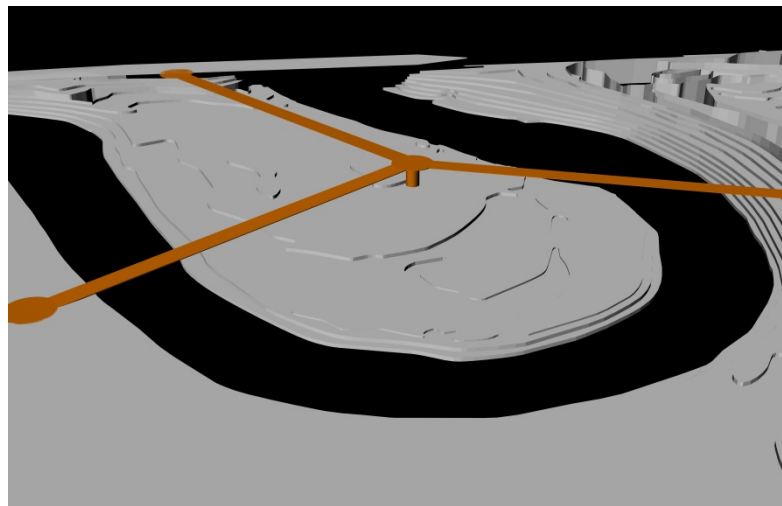
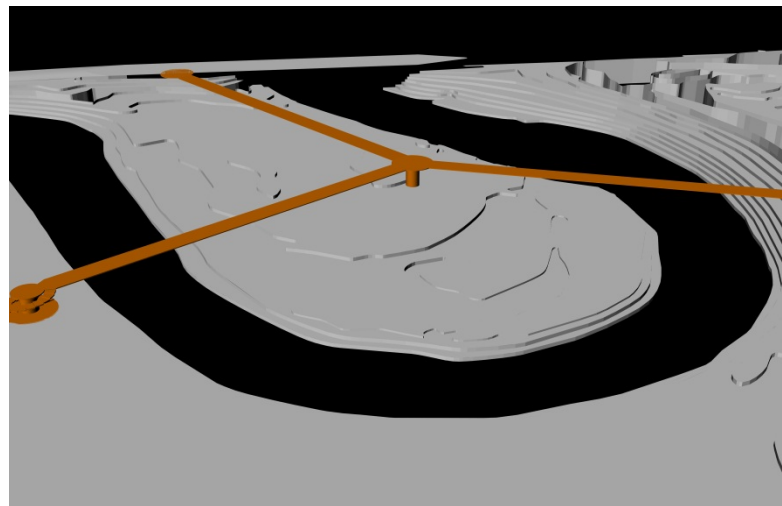
Parking
Option C

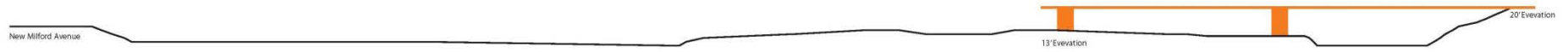
260 cars
3 buses

Design Challenge Flood Way

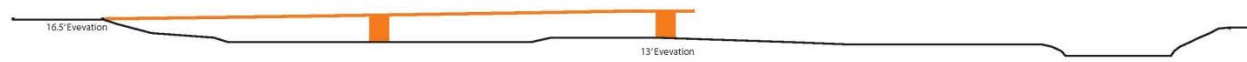


Design Solution Canopy Walk





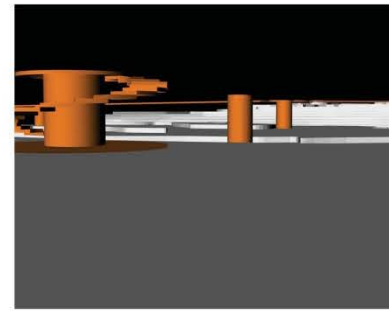
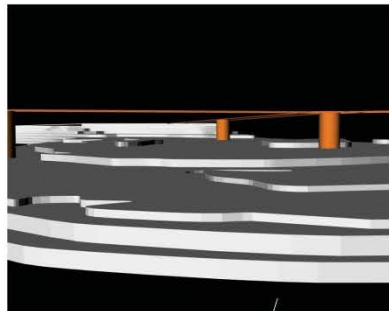
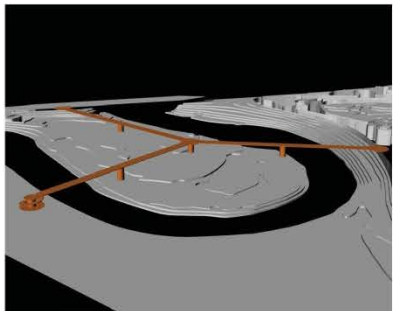
Section A-A
Eastern Canopy Walk Pathway



Section B-B
Northern Canopy Walk Pathway



Section C-C
Western Canopy Walk Pathway
Spiral staircase to meet ground elevation



Scale: 1"=25'-0"

0' 12.5' 25' 50'

Design Challenge Coagulation Basin



Ideas for the Basin

Sensory Garden

The column infrastructure of the former flocculation provides an opportunity for small garden rooms to be enjoyed by visitors seeking a sensory experience.



Outdoor Classroom

Individuals and classes can experience and explore the history of the site, the science of water and the environment



Playground

From swings to giant slides, the playground at the van Buskirk Island County Park will be a fun place for children to play and for parents to relax.



Integrating History and Ecology

Bird Blind

This river site is a rich bird habitat. The black crowned Night Heron is a frequent visitor. A bird blind will provide visitors to the river with a way to watch its avian visitors.



Building Preservation

The historic buildings will be preserved and new sustainable uses will bring new life to them.





Linking Buildings

Tree groupings and other design interventions will celebrate the connection between buildings and park.

Workers' Housing

Paths will guide visitors through the site of the former workers housing, recalling the lives of those who lived and worked at the plant.

