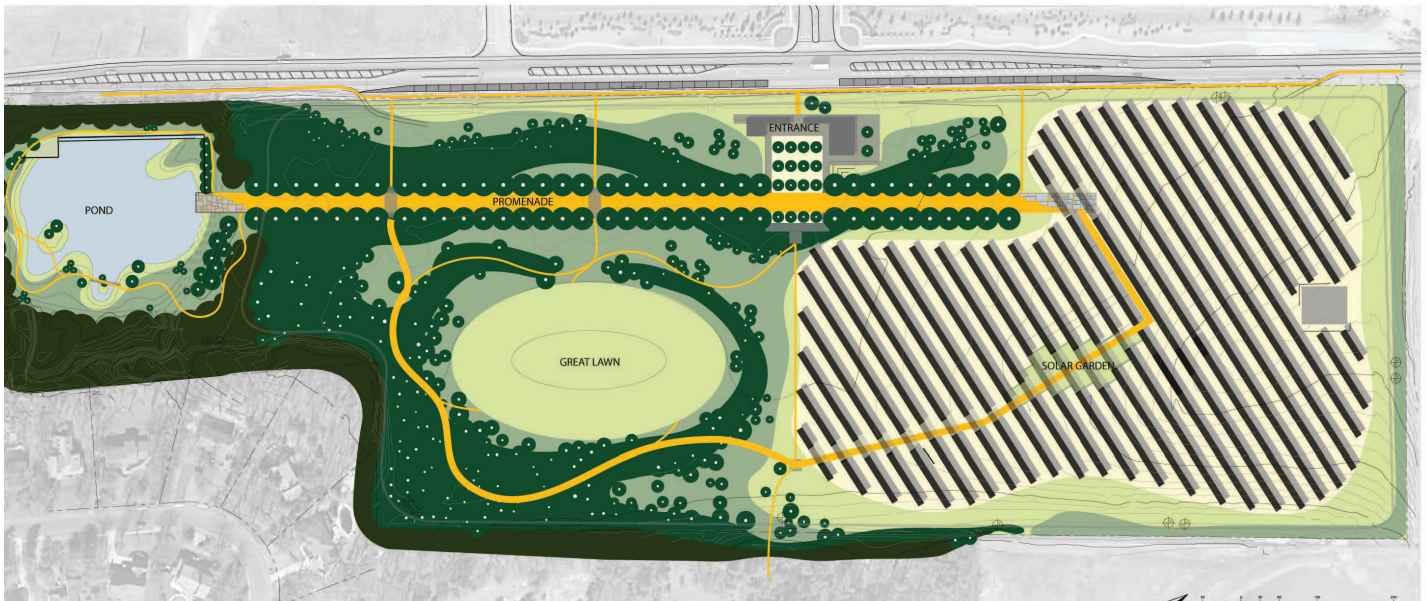


In Solis Pacem

Dialogue between modern technology and nature is developed through celebrating solar panels and a stylized nature (Asian influence) as end points of a promenade.



Technology is part of modern life. Whether we feel stifled by technology, or enhanced, is a matter of feeling as personal as our taste buds. But whether or not one would be an adopter of the latest personal technological gadget, we are all nonetheless subject to a certain level of societal technological approval, from an acknowledgment that our automobiles run with internal computers, to the idea that our power grid can become both smart and clean in years to come.

Nature is also part of modern life. While in over 400 years of development we have subjugated most of what could be considered wild nature in New Jersey, we still look to a certain idea of nature as a place of solace and renewal. Indeed, in contrast to the many technological demands of our productive lives, the idea of nature exists as a place of emotional refuge.

Voorhees Environmental Park is a unique combination of technology and nature. Its history as a quarry and municipal landfill reminds us that not a square inch of this property has gone untouched by the hand of man. And yet, it will become a place where plants are invited to grow by the process of natural succession, and a place in which a person can find a daily dose of the meditative solace of nature.

Our plan for the park begins with a discussion about technology and nature. A field of solar panels to produce economic revenue for the development and maintenance of the park is to be installed on the northern end of the site. Asking visitors to consider technology and energy, a Solar Garden exists among the panels. In contrast, an Asian-inspired Pond Garden is designed for the southern end of the site, using the existing pond as the focal point. It is a place of reflection and emotional repose. As we balance nature and technology in our lives, these two contrasting spaces are balanced on the strength of a quarter-mile Promenade to serve as both a unifying agent and main corridor. The main entrance to the park, as defined by the installation of a building to serve as an education and meeting center, is located at the midpoint of the promenade, acting as the balancing point between the two experiences on either end.