



## Hoboken City Hall Watershed Landscape

July 23, 2013

Cues Team

James Bykowski, MLA

Wolfram Hoefer, Dr.-Ing.

Beth Ravit, PhD

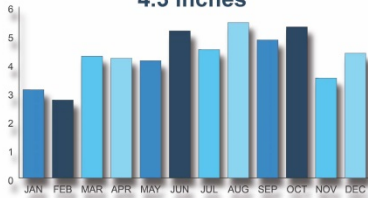
**CUES**  
Center for Urban Environmental Sustainability

 **RUTGERS**

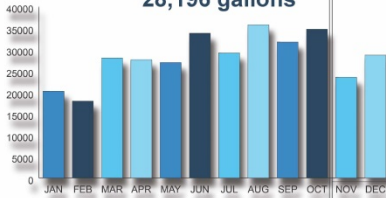
# Hoboken City Hall Watershed Landscape Existing Conditions



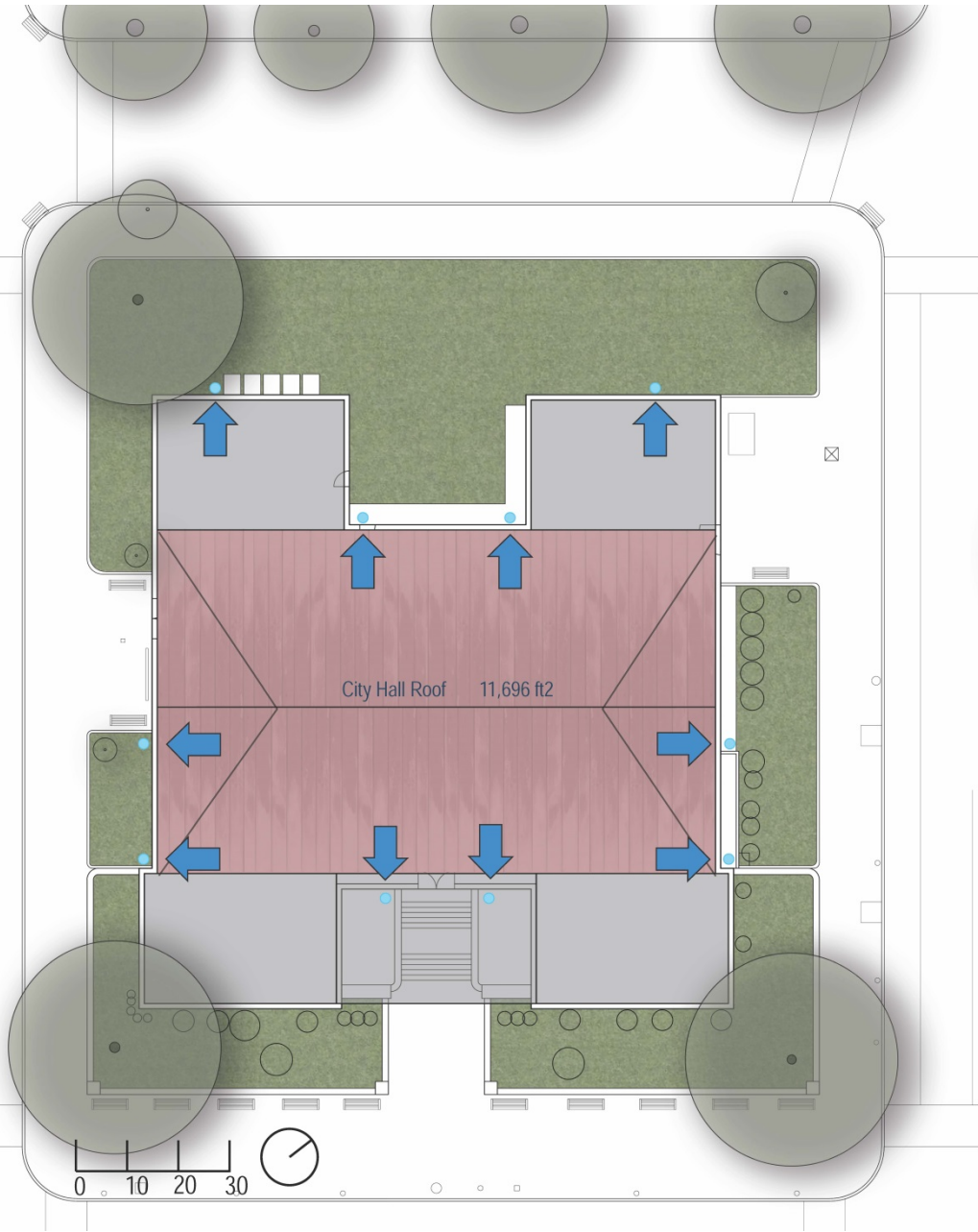
Average Rainfall in Hoboken a Month  
**4.3 inches**



Average Runoff from City Hall a Month  
**28,196 gallons**



Data Source: Years Used 2000-2013  
From the web page of the New Jersey State Climatologist

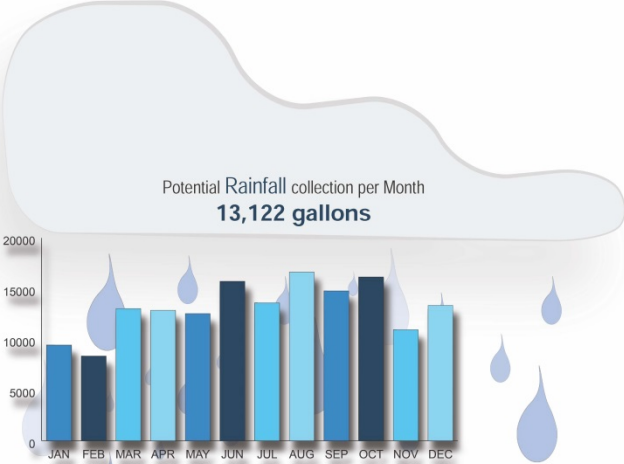


# Hoboken City Hall Watershed Landscape Concept Plan

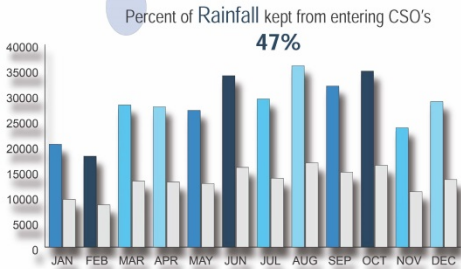
Expand community gardens for residents of Hoboken

Collect rainwater from the back half of City Hall to manage new gardens

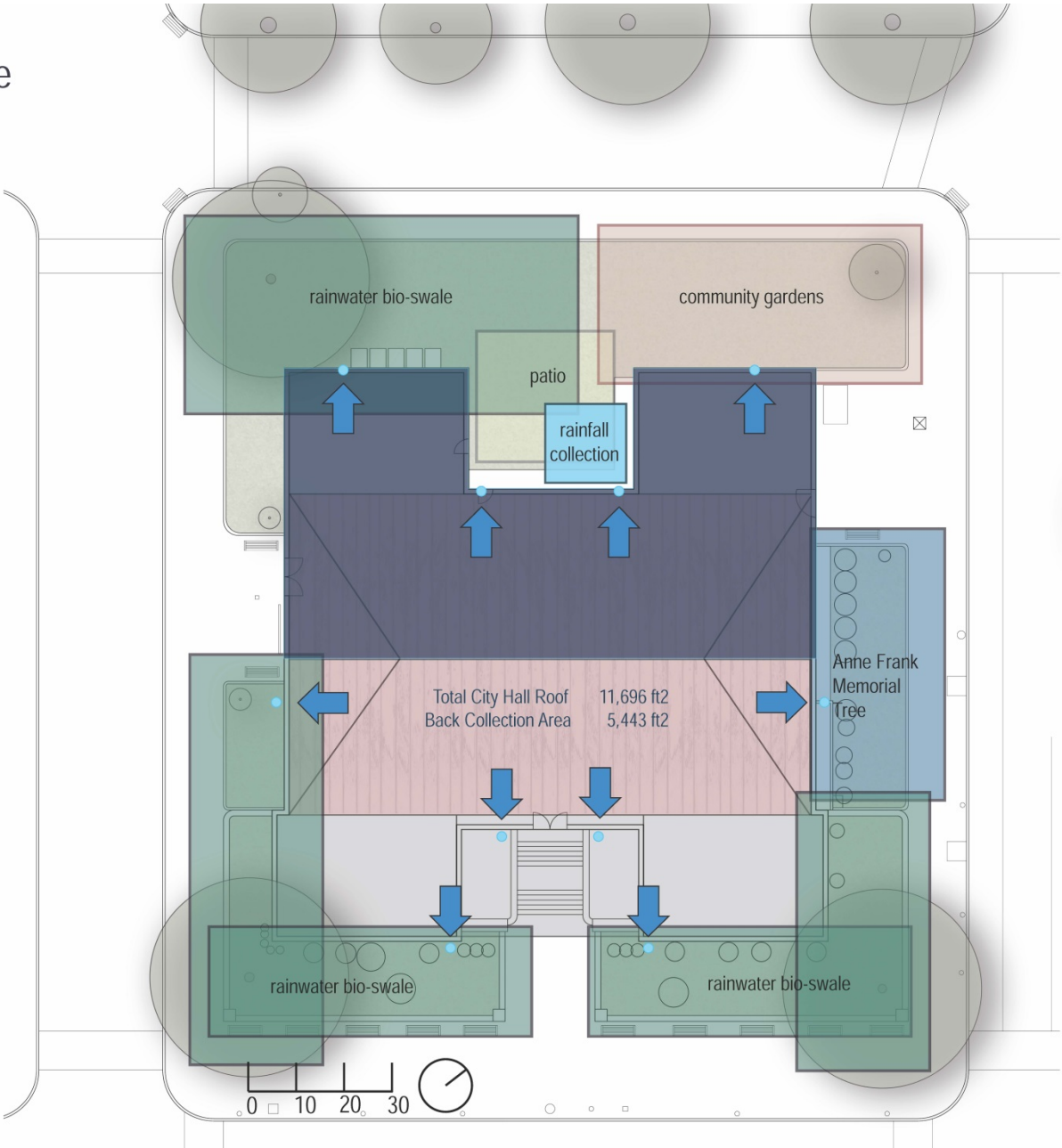
Define a location for Anne Frank Memorial Tree



Data Source: Years Used 2000-2013  
From the web page of the New Jersey State Climatologist



Data Source: Years Used 2000-2013  
From the web page of the New Jersey State Climatologist



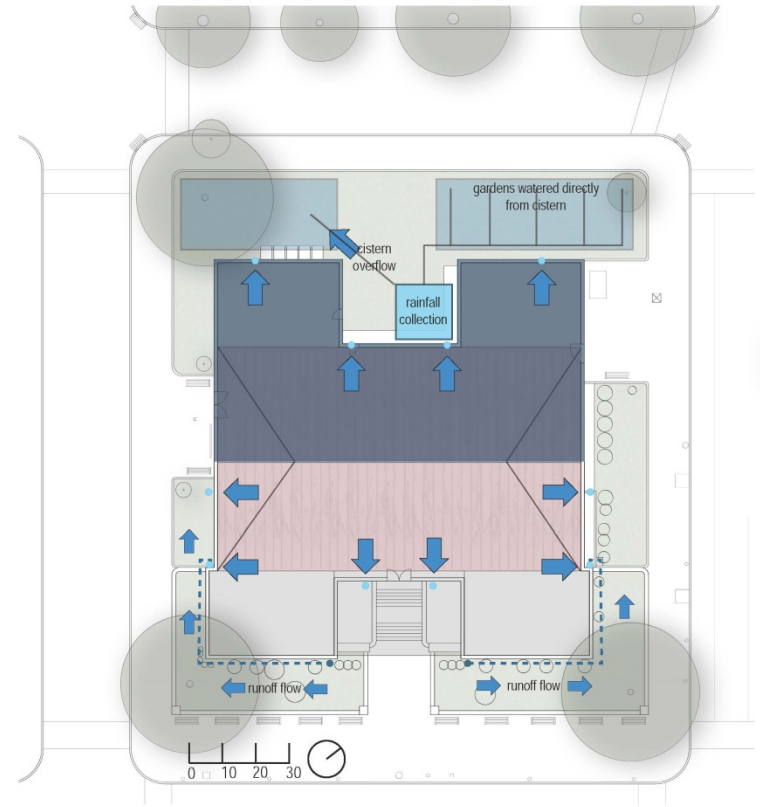




Existing down spout flow



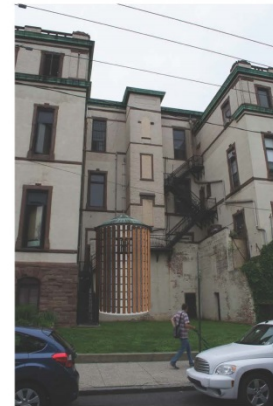
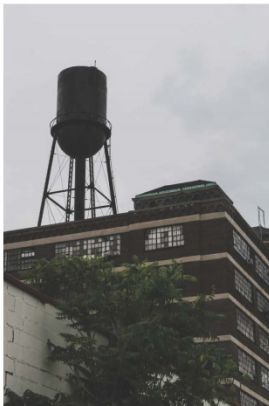
Proposed down spout flow



## Cistern Dimensions

Size : 12' x 16'

Capacity : 13,517 gallons





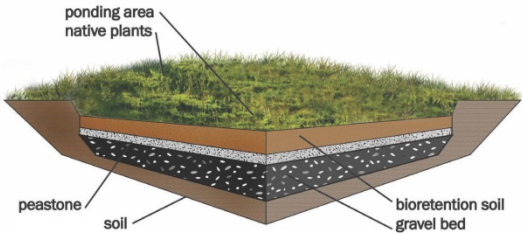




Section A-A'

# Reducing Runoff from City Hall into the Combined Sewer System

Use Plants to Absorb Rainwater  
Increases Infiltration  
Reduce Total Runoff



**Bioretention swales:**  
-Reduces stormwater runoff volume and flow rate  
-Increases groundwater infiltration and recharge  
-Designed to convey minor floods  
-removes sediment from stormwater runoff  
-Increases pedestrian city experience

