

GIBEX-Cuba



Tania describing some of the medicinal plants that she is interested in studying at OTERO.



Dr. Ilya Raskin, Isabel Armas, and Lazaro outlining OTERO's goals for GIBEX-Cuba.



Miguel Coyula and assistant Myleen interviewing Tania about her vision for GIBEX-Cuba as part of the documentary.



Brittany Graf and Isabel Armas teaching rapid plant extraction at OTERO.



Brittany Graf describing the methodology for the antifungal assay at OTERO.



Isabel Armas teaching the antioxidant assay at OTERO.



Several plant extracts that demonstrated strong antioxidant activity at OTERO and JBC.



The plants selected for extraction by workshop participants at JBC.



Isabel Armas teaching rapid plant extraction using the Dremel tool at JBC.



Brittany Graf teaching rapid plant extraction using a mortar and pestle at JBC.

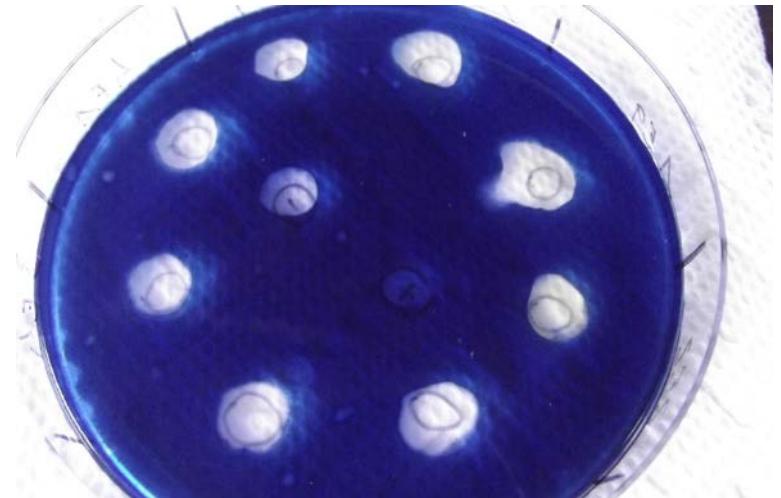


Brittany Graf teaching the JBC workshop participants to set up the antioxidant assay.



Brittany Graf teaching the principles behind the glucosidase inhibition assay.

Niurka at JBC practicing her new pipetting skills as she sets up the glucosidase inhibition assay.



Results of the glucosidase inhibition assay.



GIBEX trainers and JBC workshop participants with their Certificates of Participation after completion of the “screens-to-nature” workshop.



GIBEX trainers and OTERO workshop participants with their Certificates of Participation after completion of the “screens-to-nature” workshop.