



Center for Urban Environmental Sustainability

CUES

Brownfield Task Force  
Initial Workshop 6/22/2012

# Agenda 6/22/2012

- Welcome, Introductions
- Overview Sustainable Jersey  
Randall Solomon,  
Co-Director Institute for Sustainability Planning & Governance  
MLUC
- Overview CUES  
CUES co-directors, Dr. Beth Ravit, Dr. Wolfram Hoefer
- Brownfield Discussion
- Next Steps

# Overview Sustainable Jersey

- Randall Solomon, Co-Director Institute for Sustainability Planning & Governance MLUC

# Center for Urban Environmental Sustainability

- Interdisciplinary center
- Rutgers Department of Landscape Architecture  
Rutgers Department of Environmental Sciences
- Enhance the economic, social, and aesthetic well being of New Jersey residents
- Providing technical and design assistance to local governments and non-governmental organizations
- Supported by



# CUES Leadership

- Dr. Beth Ravit  
Department of Environmental Sciences  
Research on re-introduction of the ecologically extinct eastern oyster  
CUES focus on communication with municipalities, NGOs, and local stakeholders
- Dr. Wolfram Hoefer  
Department of Landscape Architecture  
Research on cultural interpretation of brownfields as potential elements of the public realm  
CUES focus on linking outreach, research and classroom

# Leachate Graywater Beneficial Re-Use

Treatment and recovery of leachate gray water for irrigation.

Partnering with:  
New Jersey  
Meadowlands  
Commission

RU faculty:  
Weilin Huang





# Hackensack Water Works, Oradell, NJ

Adaptive re-use and conceptual park design options for the historic Hackensack Water Works in Van Buskirk Island Park.

Partnering with:

Water Works Conservancy  
Hackensack Riverkeeper  
Bergen County



# Hudson-Raritan Estuary Habitat Restoration

Research to support re-introduction of the ecologically extinct eastern oyster (*Crassostrea virginica*) in the HRE.

Partnering with:

NY/NJ Baykeeper

Naval Weapons Station Earle

EOHSI

CRSSA

RU faculty:

Judith Weis, Keith Cooper



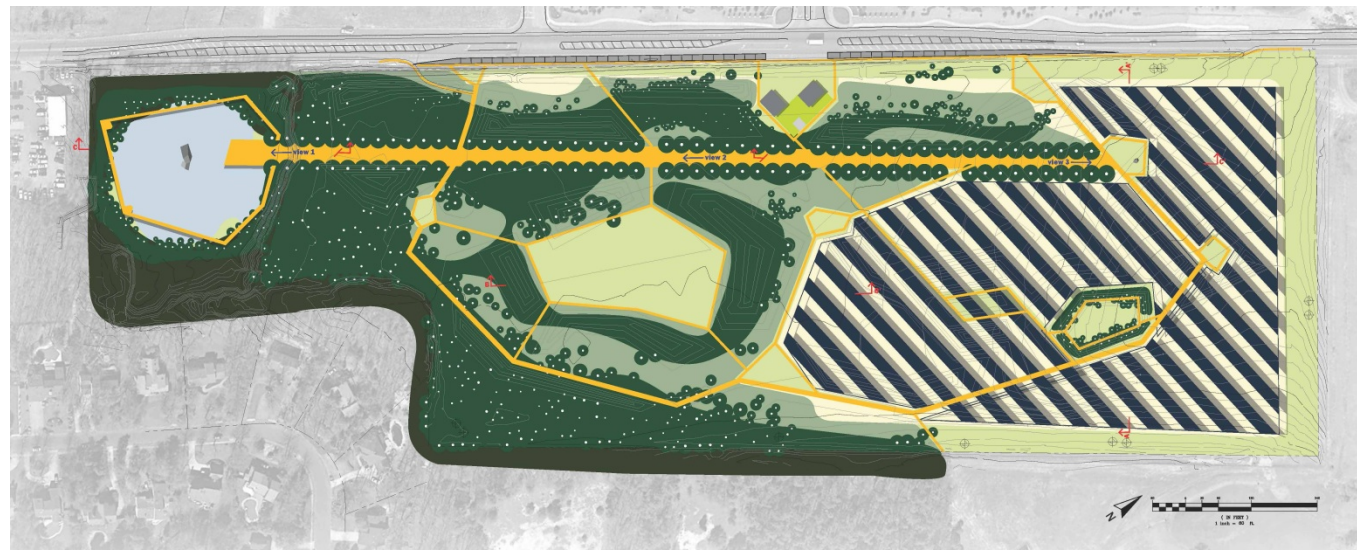


# Voorhees Environmental Park

Brownfield to greenfield and sustainable energy production through solar panel installation on a former landfill.

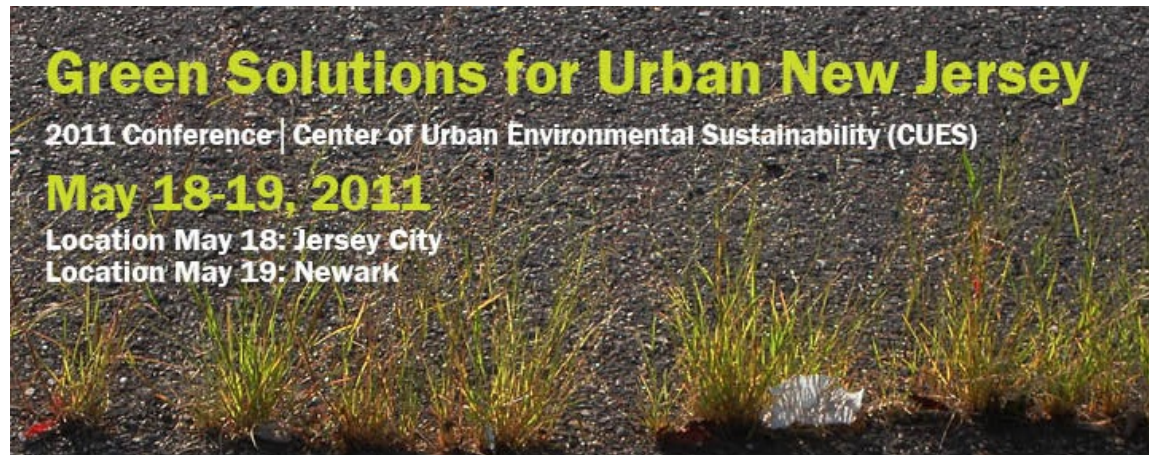
Partnering with:  
Township of Voorhees, VECEF

RU faculty:  
Steven Handel  
Chris Obropta  
Bernie Dunbar





# (Sub-)Urban Networking



American Planning Association  
New Jersey Chapter



ASLA

TYLIN INTERNATIONAL

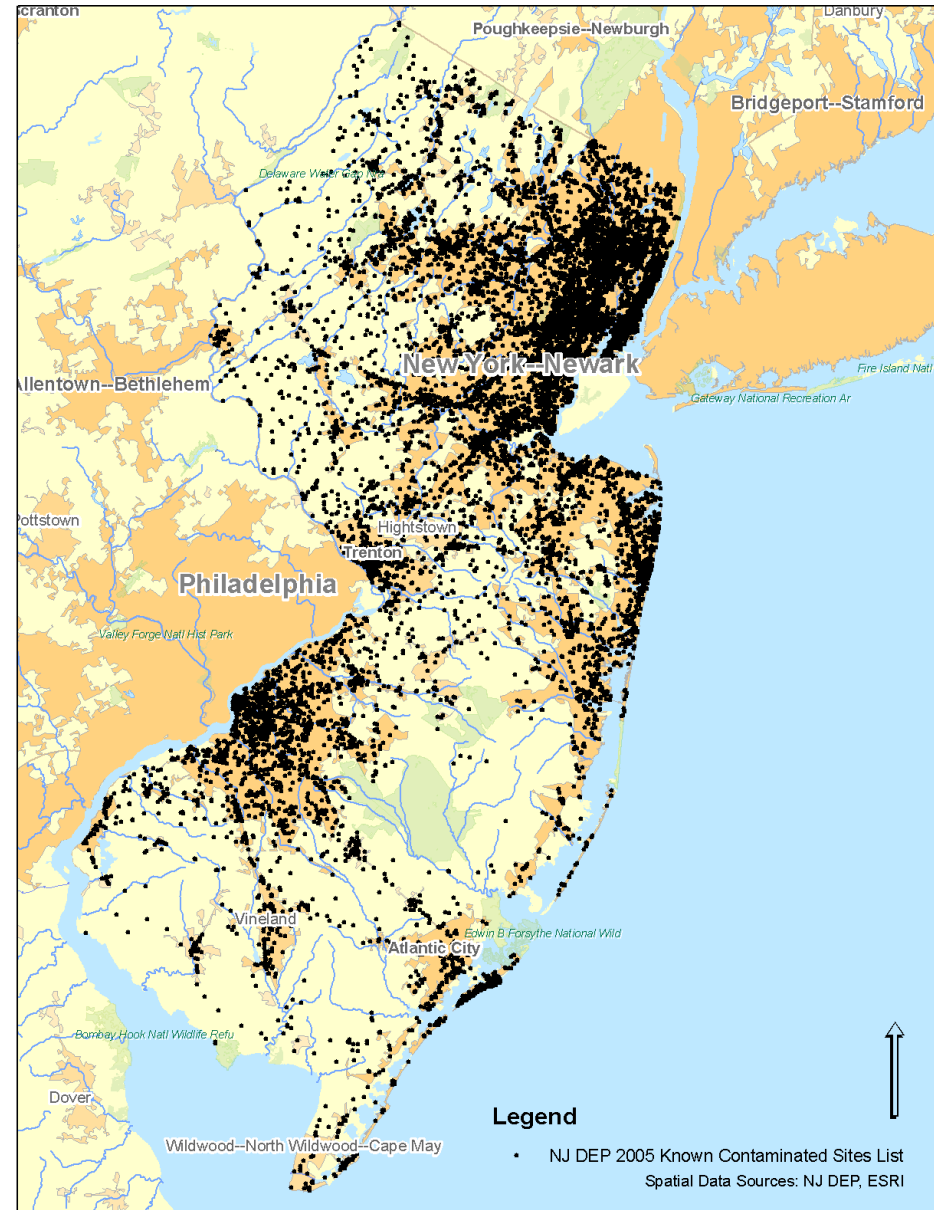
# Bloustein School of Planning and Public Policy

PHD Candidate Leah Yasenchak  
Gas Stations in New Jersey

- City of Plainfield: 139 former gas stations; 77% of which have no environmental records
- City of Trenton: 162 former gas stations; 62% of which have no environmental records (this would have been higher except that as a result of the inventory, Trenton conducted preliminary assessments on a number of these sites and thus entered them into the DEP database.)
- City of Newark: 448 current and former gas station sites; 70% of which have no environmental records

# Brownfields

- NJDEP oversees some 23,000 known contaminated sites.
- Problem in every urban municipality
- Established planning and clean up procedures
- Regulatory complexity and physical danger hinder citizen engagement





# Brownfield Discussion

- Tool Box Goal(s)
- Resources
- Obstacles
- Elements appropriate for Brownfield Toolbox
- Timelines
  - announcement at November League of Municipality Meeting
  - Toolbox introduced in early 2013

# Next Steps

- Subcommittees (LSRP group, regulatory group, etc.)
- Meeting Type/Schedule