

Bergen County Park Commission  
Annual Report, 1978



GEESSE put on an aerial show for young Wildlife Center visitors.<sup>2</sup>

The Record Photo

QUADRUPLET kids, a rarity, were born at the Van Saun Park zoo.

COVER PICTURE: Horse shows at Overpeck Park are very popular. Outdoor rings are utilized except in winter, when shows take place in the indoor arena.



## BERGEN COUNTY PARK COMMISSION, 1978

Hackensack, New Jersey

Otto C. Pehle, President

John Bombace, Vice President

Salvatore J. Pennisi

Henry G. Avery, Secretary

Frank J. Cikutovich

Lawrence E. Nyland, Ass't Secretary

William F. Smith

D. Richard Sanfilippo

Jennie Gaitskill

James A. McFaul, Executive Director

William L. Mann, Assistant Executive Director

Timothy J. Sullivan, Assistant County Counsel

## BOARD OF CHOSEN FREEHOLDERS, 1978

Jeremiah F. O'Connor, Director

Doris Mahalick, Deputy Director

Joan Lesemann

Gerald A. Calabrese

D. Bennett Mazur

Joseph A. Carucci, Chairman,

Charles E. Reid

Park and Recreation Committee

Joan Steinacker

Harry J. Gerecke

Stephen J. Cuccio, County Administrator

Richard L. Nelson, Assistant Executive Administrator

Vincent P. Rigolosi, County Counsel



BIRDS in the Van Saun Park walk-through aviary ignore human spectators.



# Praise for a Good Job On a Tight Budget

Park Commission members and Bergen Freeholders congratulate Commission personnel for managing to maintain high standards of park service and upkeep despite a cutback in man hours.

Like other government agencies in New Jersey, the Bergen County Park Commission was caught in the inflation-budget cap pinch and found it difficult to make ends meet in 1978. Knowing how much our county parks mean to residents, we had the will and found the way to minimize disappointment.

We were heartened by voter approval of a \$5 million hike in the Park Commission's capital funds bonding limit. The winning margin was slim, to be sure, but during a period of widespread tax revolt a majority of Bergen voters did put their money on the line for park development and improvement.

Projects for which capital funds are needed include reconstruction of deteriorated facilities, continued development of Overpeck Park, zoo renovation and expansion, addition of convenience and recreation facilities in many park areas, development of a South Bergen swimming facility, and provision of more facilities which accommodate handicapped park visitors. Bicycle trails, tennis courts, playgrounds, and picnic areas are among recreation facilities to be added to the county parks.

The Park Commission, in cooperation with the Board of Freeholders, will continue to bend every effort to maintain high standards in our parks and to proceed with needed park development and improvement.

OTTO C. PEHLE

Bergen County Park Commission President



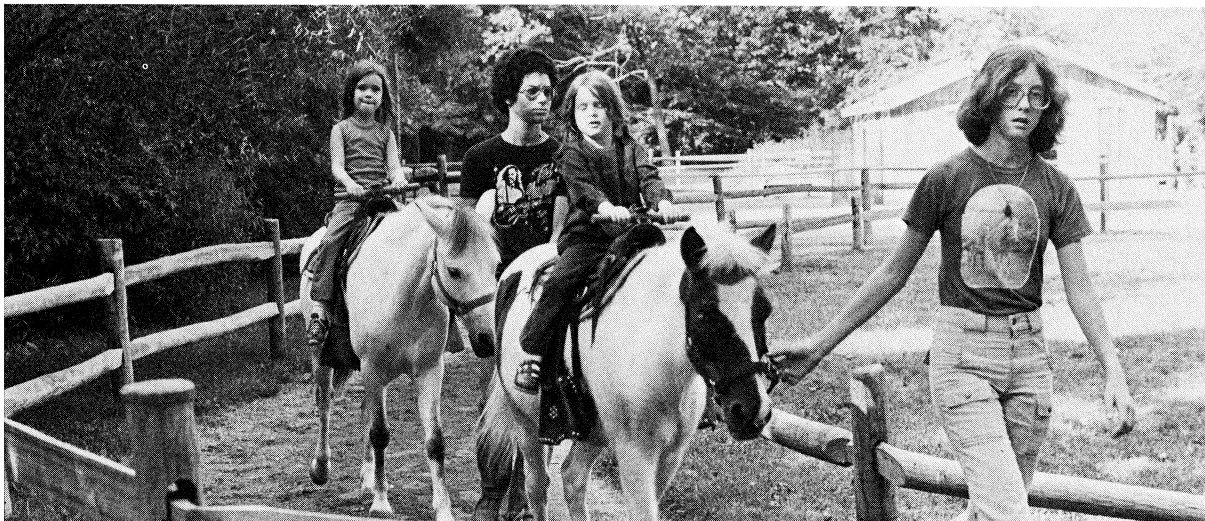
The Record Photo

THE LAKE at Van Saun Park lures anglers. Eleven park areas have fishing.

SUNBATHERS lie on the sand beach at one of Darlington Park's two swimming lakes.



PONY rides, fast fading from the Bergen scene, delight young Van Saun Park visitors.





# The Park System Gains 469 Acres of Woodland And A Bonding-Limit Hike

Voter approval of a \$5-million increase in the Bergen County Park Commission's bonding limit, raising the limit to \$15 million, and acquisition of 469.11 acres of wooded parkland were the 1978 occurrences of top importance to the Bergen County park system.

## VOTERS APPROVE INCREASE

The Park Commission had expended or committed virtually all of the capital funds under the old bonding limit and needed access to more capital funds for park renovation and improvement, park development, and land acquisition.

The newly acquired 469.11-acre property adjoining Ramapo Valley County Reservation is one of the last wilderness tracts in the County. Now it is preserved as a natural retreat for all to enjoy through the years. There are hiking trails, and guided nature walks are planned. State Green Acres funds paid half the \$985,131 purchase price.

With the addition, Ramapo Valley Reservation occupies 1,183.11 acres. Negotiations for acquisition of four adjacent parcels totaling 257 acres had not been completed by year end.

Bergen County Park Commission projects com-

pleted in 1978 included two new tennis courts and the rebuilding of 14 tennis courts, bocce courts in three parks, a zoo infirmary, track and field facilities, and elevated bleachers.

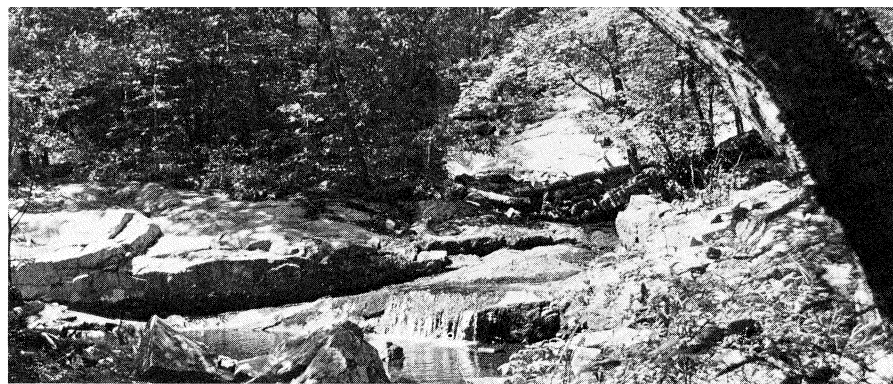
## TENNIS AND BOCCIE COURTS

A State Green Acres Program grant paid half the construction cost of the two new tennis courts, which bring to five the number of free courts in Riverside Park's South Area. All 12 courts in the Van Saun Park tennis center were reconstructed, with State Green Acres funds paying half the cost. The two south courts at Darlington Park also were reconstructed. Bocce courts were opened in Saddle River Park's Rochelle Park Area, Dahnert's Lake Park, and Riverside Park's North Area.

The zoo infirmary at Van Saun Park was set up on the upper level of the barn which serves as winter quarters for birds and animals requiring warm temperatures all year.

Track and field facilities, elevated bleachers, and a paved drive were added at Overpeck Park's Leonia North Area. Construction of a regulation soccer field was started there.

Two fenced grassy areas where off-duty horses



SUN lights a streamside clearing at Ramapo Valley Reservation's addition.

can graze and exercise were added at Overpeck Riding Center in the Leonia South Area of the park. New seating was installed in the riding center's indoor arena. Plans for a paddock-lighting installation were drawn up. The contract was awarded for construction of a drive and parking area at Leonia South.

## OVERPECK PARK PROJECTS

The parking area and entrance road at Overpeck Golf Course were repaved.

The Park Commission graded the site for a motocross bicycle course in Overpeck Park's Palisades Park Area. The course was laid out by private interests with Park Commission permission and is open to all, but a park-use permit must be obtained in advance from the Park Commission.

Renovation and improvement of 15 baseball fields was 90 percent completed by year end. Improvements included new infield soils, fencing, backstops, sodding, asphalt bleacher pads, and new home plates and pitcher's rubber. Renovations were made at seven fields in Riverside Park, two each in Pascack Brook Park and Van Saun Park, and one each at Wallington Park,

the Otto C. Pehle Area of Saddle Brook Park, and the Palisades Park and Leonia North Areas of Overpeck Park.

## WORK ON GOLF COURSE

Construction of Darlington Golf Course continued. Opening of nine of the projected 18 holes is scheduled for 1979.

A zoo-design firm was hired to design a master plan for renovation and expansion of the zoo at Van Saun Park.

A contract was awarded for construction of a relief outlet to control fishing-lake outflow at Darlington Park, and the Park Commission accepted preliminary plans and specifications for a gabion retaining wall around Darlington Park's lower lake. Drives at Darlington Park were repaved.

Field traverses were established for a projected 1¼-mile extension of the North Trail (bicycle-pedestrian) in Saddle River Park. The extension will go from the Glen Rock Area to the Wild Duck Pond Area and will include a new bridge. Approval has been received for a federal construction grant, contingent on completion of land acquisition for the extension.

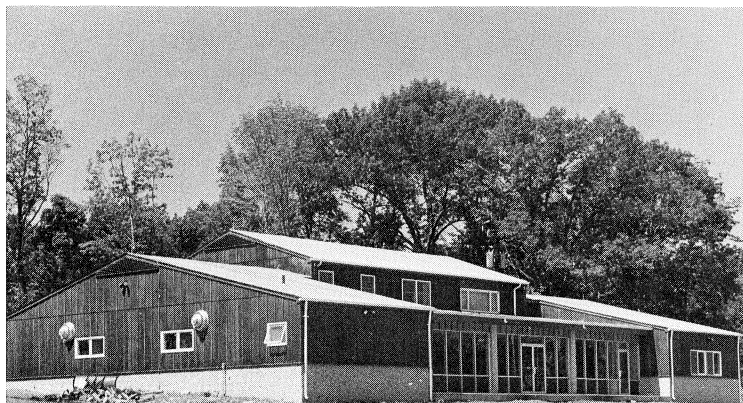
Construction plans for new tees and greens at Rockleigh Course were completed.

Plans were drawn for two additional animal shelters at the Wildlife Center.

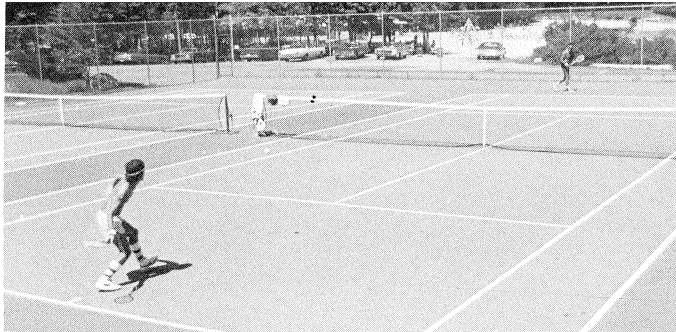
## 6,074 ATTEND PROGRAMS

There were free public nature programs all year and guided hikes much of the year. Most of the programs were at the Wildlife Center, and most of the hikes were at Campgaw Mountain and Ramapo Valley Reservations. Public Park Commission programs in 1978 had a total attendance of 6,074.

DARLINGTON Golf Course construction continues. Preparation is made for 1979 opening of nine of the course's projected 18 holes.







TENNIS courts were constructed in Riverside Park's South Area, left, and reconstructed at Darlington Park (south courts, center picture) and Van Saun Park, right.

Naturalists conducted special programs at the Wildlife Center for 1,111 groups, chiefly school classes, with a total of 20,240 participants. At the two reservations there were 347 special programs for groups, with a total attendance of 8,112.

Nature workshop courses were offered for all age groups. Special events included film festivals and maple sugaring demonstrations. Natural science displays were prepared for the exhibit hall.

The Park Commission presented six summer folksinging programs performed by Shirley Keller at Van Saun Park. Cash prizes were awarded at the Park Commission's annual outdoor art show in Van Saun Park. Closing of the Van Saun Park tennis center for reconstruction of the courts reduced to one month the free summer tennis clinics for registered residents aged 8-17 and limited the Park Commission tennis tournament to singles matches.

#### SHOWMOBILE UTILIZED

The Park Commission Showmobile was utilized by the Bergen County Office on Aging and the

Department of Consumer Affairs to carry to all parts of the County information on services available in Bergen to the elderly.

Possible sites for a swimming facility in Southwest Bergen were inspected. The Park Commission received from four architectural firms proposals to develop a feasibility and economic study to determine the need for the facility and to evaluate prospective sites. The Park Commission will monitor and administrate the contract with the architect.

Steps were taken by the Board of Freeholders toward acquisition of three parcels (totaling 1.7 acres) in North Arlington—adjacent to Riverside Park. Acquisition will be contingent on approval of a State Green Acres Program grant.

The State House Commission approved an exchange of property between the Teaneck Redevelopment Agency and the Bergen County Park Commission for the Township of Teaneck and the County of Bergen. The exchange had not been effected by year end.

The Park Commission's 1978 current-funds was \$5,073,016. Park Commission 1978 revenue,

which was submitted to the County Treasurer, totaled \$1,645,638—nearly a third of the amount of the current-funds budget.

#### THE FEES ADD UP

Fee facilities accounted for most of the revenue. Totals were: \$360,955, Rockleigh Golf Course; \$276,573, Darlington Park (swimming season); \$267,040, Overpeck Golf Course; \$178,816, Campgaw Mountain Ski Center; \$143,048, Overpeck Riding Center; \$115,529, Orchard Hills Golf Course; \$57,696, Van Saun Park Railroad; \$54,691, Saddle Ridge Horseback Riding Area; \$16,148, Van Saun Park tennis center; \$15,972, Van Saun Park pony ring; \$7,423, railroad at Riverside Park's South Area. Registration and park-use permit fees totaled \$103,115. Miscellaneous revenue, including payment from concessionaires, totaled \$48,632.

Among items constructed in 1978 by Park Commission crews were a pony shelter and pony ring, a trailer for hauling supplies, a snow plow built from scrap parts, a judges' stand for horse shows, barricades, rose arbors, bulletin boards, feed bins, a lean-to, storm windows, roof gutters, signs and sign posts, zoo gates, zoo infirmary cabinets, racks, and louvers.

#### KEEPING UP APPEARANCES

Crews installed fixtures, goal posts, lights, fans, heaters, tile, drainage pipe, drinking fountains, curbing, meters, roofs, and alarms.

Work on grounds included tree trimming and removal, shrub pruning, grading, raking, planting, aerating, fertilizing, spraying, leaf disposal, cultivating in gardens, mowing, cleaning of brooks and drainage ditches, and daily clean-up of litter and garbage.

Firewood was cut for use during ski season, and fencing was reinforced. Carting of stone, wood chips, manure, topsoil, and fill dirt enabled the Park Commission to put all park system resources to good use.

Considerable time and attention were devoted to animal care at the zoo in Van Saun Park, at the Wildlife Center, and at the two horseback riding facilities.

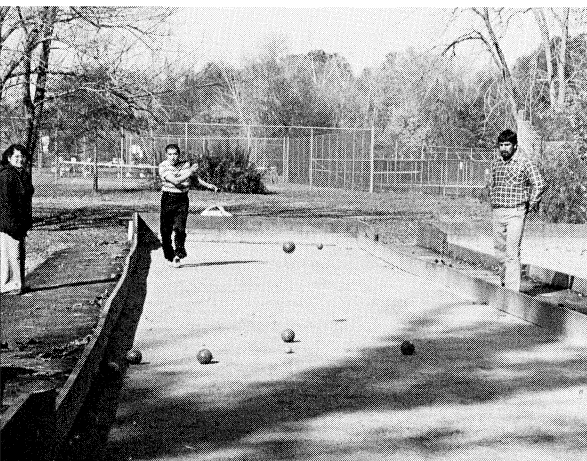
Painting went on continually throughout the park system. Buildings had to be cleaned and maintained and equipment tuned up.

#### A MULTITUDE OF REPAIRS

Repairs were made to structures, plumbing fixtures, drain pipe, doors, windows, locks, chimneys, alarm systems, burners and heaters, walls, pumps, fences, gates, vehicles and other equipment, bridges, railroad tracks, stanchions, barricades, picnic tables, trash receptacles, and park drives.

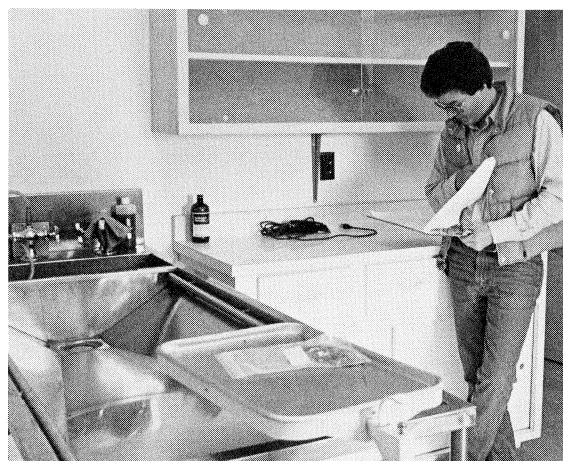
Vandalism remained a costly and time-consuming problem throughout the park system. At Overpeck Park's Leonia areas workmen spent 20 per cent of their work time repairing damaged facilities. One contractor had all the fence posts stolen before he could attach the fencing. A tractor was vandalized in Saddle River Park's Glen Rock Area.

The parks had more visitors than ever. Van Saun Park alone reported a 1978 attendance total of 1,184,620, 6,370 above the 1977 figure.



BOCCIE is the new game at Saddle River Park's Rochelle Park Area.

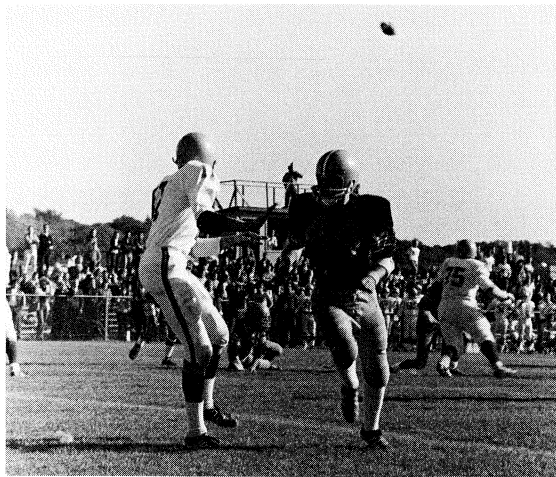
ZOOLOGIST William Fiore inspects the new Van Saun Park animal infirmary.



# There's A Lot Going On



A CACTUS climber (above) and covered-wagon climber (below) are to be found in the wild west playground at the Leonia South Area.



FOOTBALL and baseball fields are kept busy.

A KITE is soaring at Leonia North.



The Record Photo

THE BICYCLE-pedestrian path beside the lake forms a figure 8.



The Record Photo

LISA Shanno, 3, rests on a dandelion carpet.

VISITORS use their own volleyball net in an open-play area.





# In Overpeck Park

Overpeck County Park has an 18-hole golf course with ponds and lagoons, a horseback riding center with an indoor arena, fenced ball fields with bleachers, field houses, eight admission-free sheet asphalt tennis courts with lights and practice backstops, a lakeside figure-8 bicycle path, a wild west playground, facilities for track and field events, picnic tables, and a rink which is flooded in winter for ice skating. A soccer field is under construction.

Plans call for adding a small-boat marina limited to sailboats and other craft without engines, an amphitheater for performing-arts presentations, another playground, and more tennis courts, athletic fields, bicycle paths, and picnic areas.

Overpeck Lake is taking shape. Excavation of the 37-acre section north of Fort Lee Road is completed, and dredging of the 120-acre south section is expected to be completed in approximately two years. Some park visitors enjoy fishing from the lake shore.

The next big project planned for the park is development of a recreation area on Ridgefield Park and Teaneck acreage. This will have the marina, the amphitheater, the new playground, athletic fields, tennis courts, a bicycle trail, and picnic areas.

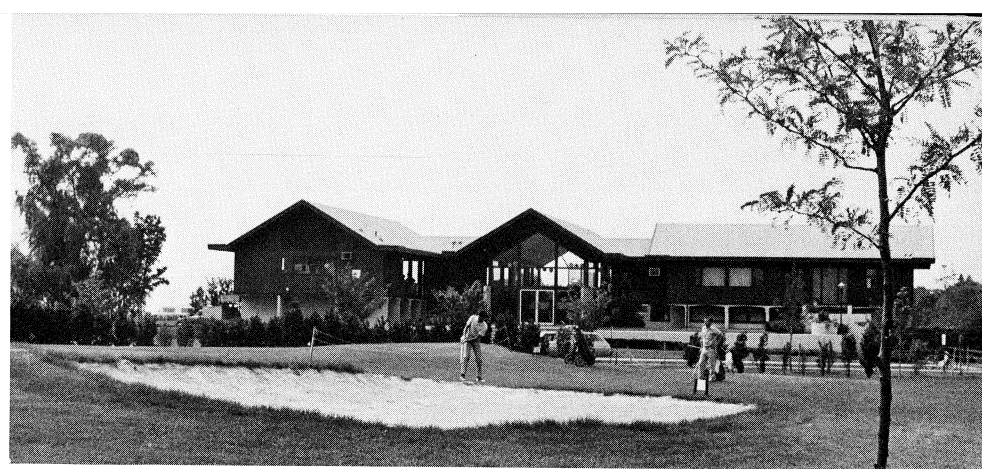
Overpeck Park has approximately the same acreage as Manhattan's Central Park, but—unlike Central Park—Overpeck Park doesn't have its property all together in one neat package. The Bergen facility is fragmented by roadways and Overpeck Creek and is more like several parks.

The golf course is entered from East Cedar Lane, Teaneck. The riding center is in the park's Leonia South Area on the south side of Fort Lee Road. Also in this area are the wild west playground, picnic tables, and the rink for ice skating.

Across the road is the Leonia North Area, with four tennis courts, the bicycle path, and athletic fields.

Entry to the Palisades Park Area is from Roosevelt Street, off Grand Avenue. This area has the other four tennis courts, athletic fields, picnic tables, a motocross bicycle course, and horseshoe-pitching facilities.

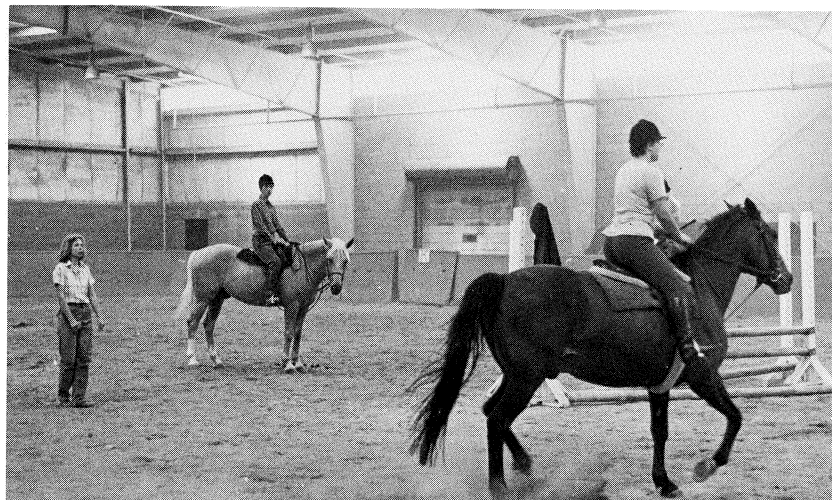
Highway encroachment, considerable litigation, and very soggy terrain have worked against development, but the obstacles have been dealt with and popular Overpeck Park is fulfilling its promise as the much needed major outdoor recreation facility in Southeast Bergen.



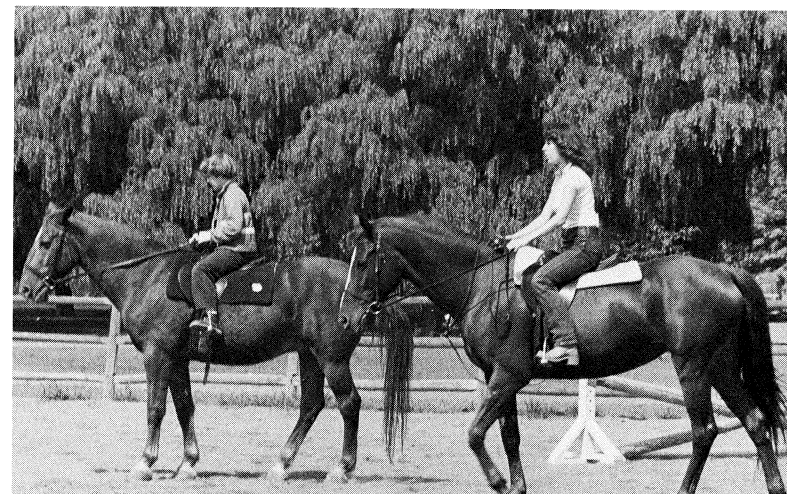
THERE are two ponds, two lagoons, and a lake at Overpeck Golf Course.

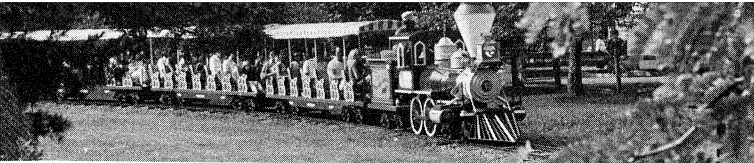


THE LEONIA North and Palisades Park Areas have tennis courts with lights and practice walls.



INSTRUCTION is offered at Overpeck Riding Center with its indoor arena (right), and paddocks (far right).





TRAIN rides are part of the fun at Van Saun Park.

### COUNTY PARK ACREAGE BERGEN COUNTY PARK COMMISSION

CENTRAL BERGEN			
Park	Municipal Acreage	Park Acreage	
Saddle River County Park	Wild Duck Pond, Ridgewood	81.84	81.84
	Glen Rock Area	64.31	64.31
	Dunkerhook, Paramus	171.60	171.60
	Fair Lawn	93.81	93.81
	Otto Pehle-Saddle Brook	79.87	79.87
	Rochelle Park	84.12	84.12
Van Saun County Park	Paramus	53.32	53.32
	River Edge	86.48	86.48
	<b>Total Area Acreage</b>		<b>715.35</b>
NORTHEAST			
Rockleigh Golf Course	Rockleigh	164.12	
	Norwood	90.07	
	Northvale	9.93	264.12
Wood Dale	Woodcliff Lake	55.01	
	Hillsdale	52.72	
Pascack Brook	Park Ridge	9.82	117.55
	Westwood	117.71	
	River Vale	19.63	137.34
Overbrook Park	Westwood	2.79	2.79
	River Vale	2.00	2.00
Baylor Massacre Site			
Alpine (Undeveloped)	Alpine	190.55	190.55
	<b>Total Area Acreage</b>		<b>714.35</b>
NORTHWEST			
Bergen County Wildlife Center	Wyckoff	81.34	81.34
Darlington County Park and Darlington Golf Course	Mahwah	231.11	
	Ramsey	83.13	314.24
Ramapo Valley County Reservation	Mahwah	1,183.32	1,183.32
Campgaw Mountain County Reservation	Mahwah	1,056.42	
	Oakland	189.12	
Saddle Ridge Riding Area	Franklin Lakes	105.56	1,351.10
	<b>Total Area Acreage</b>		<b>2,930.00</b>
SOUTHWEST			
Undeveloped	Lyndhurst	220.00	220.00
	North Arlington	7.64	7.64
Riverside County Park	Lyndhurst	76.46	
	North Arlington	32.06	108.52
Belmont Hill County Park	Garfield	9.00	9.00
	Garfield	9.53	9.53
Dahnert's Lake County Park			
Wallington County Park	Wallington	22.99	22.99
	<b>Total Area Acreage</b>		<b>377.68</b>
SOUTHEAST			
Overpeck County Park	Englewood	7.71	
	Leonia	168.31	
	Teaneck	471.93	
	Ridgefield Park	99.26	
	Palisades Park	63.60	
	<b>Total Area Acreage</b>		<b>810.81</b>
	<b>Total Acreage</b>		<b>5,548.19</b>

### REPORT OF PARTICIPATING FUNDS RECEIVED FROM ASSISTANCE PROGRAMS LAND ACQUISITION

December 31st, 1978

Date	Project	Town	Acreage						
1) 12/13/62	Land for 9-hole addition to Rockleigh Golf Course	Norwood	86.80	\$ 260,000.00	State Green Acres	\$	130,000.00		
2) 3/18/63	Open space reserve	Alpine	93.10	400,000.00	State Green Acres		200,000.00		
3) 4/26/63	Wildlife Center site	Wyckoff	81.35	400,000.00	State Green Acres		200,000.00		
4) 1/15/64	Open space reserve	Alpine	97.45	310,000.00	State Green Acres		155,000.00		
5) 2/ 9/65	Additional Saddle River Park property	Paramus	3.63	50,250.00	State Green Acres		25,125.00		
6) 3/17/65 8/ 2/65	Darlington Park site Darlington Park site	Mahwah, Ramsey " "	178.26 —	1,150,000.00 (HUD)	State Green Acres U.S. Housing & Home Fin. Agcy.	\$575,000.00 764,068.00			
7) 6/15/67 6/ 9/69	Addition to Campgaw Reservation Addition to Campgaw Reservation	Mahwah "	59.75 —	137,418.00	State Green Acres U.S. "HUD"	\$ 68,709.00 137,418.00			
8) 10/ 2/72 3/12/73	Ramapo Valley Reservation site Ramapo Valley Reservation site	Mahwah "	624.21 —	1,560,527.50	State Green Acres U.S. "BOR"	\$780,263.00 1,560,526.75			
9) 1/11/68	Overpeck Park tidal lands	Teaneck, Leonia, Englewood, Pal. Pk., Ridgefield Park	* 399.29	400,000.00	State Green Acres		200,000.00		
10) 2/ /78	Ramapo Valley County Reservation	Mahwah	469.11	985,131.00	State Green Acres		492,565.00		
			<u>2,092.95</u>	<u>\$5,653,326.50</u>				<u>\$3,864,702.75</u>	

### IMPROVEMENTS

11) 6/27/68	Improvements at Wildlife Center	Wyckoff	(81.35)	\$ 297,136.18	U.S. "BOR"	\$ 148,568.09
12) 5/19/76	Improvements	Pascack Brook			" "	109,890.44
13) 7/ 9/76	Improvements	Wallington			" "	35,090.00
14) 8/ /78	Improvements	River Edge/Paramus		52,799.65		
15) 9/ /78	Improvements	Lyndhurst		40,903.00		
				<u>\$5,059,034.33</u>		<u>\$4,158,261.28</u>

\* While the County of Bergen was the owner in fee of these lands, the State of New Jersey, through extensive negotiations with the County, established its claim that this property (399.29 acres of a total of 813.43 acres in the Overpeck Area) was tidal land and as such was the property of the State. After receiving in payment from the County a fee of \$1,000.00 an acre — totalling \$400,000, the State granted the County a Riparian Grant. Subsequently the State, through the Green Acres Assistance Program, reimbursed the County half the cost (\$200,000) of this Riparian Grant.

### SUMMARY

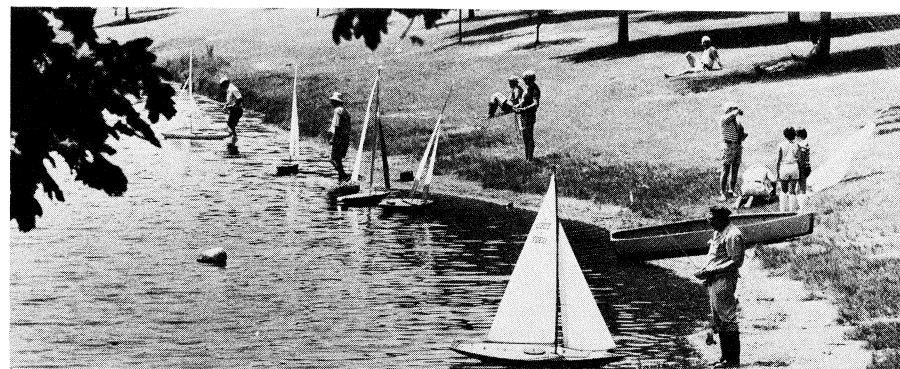
Total contributed by State Green Acres Assistance Program	\$2,826,662.00
Total contributed by U.S. Government Agencies	<u>1,331,599.28</u>
	<u>\$4,158,261.28</u>





THE Record Photo  
THERE IS night skiing on weekdays at Campgaw Mountain Ski Center.

# Among The Happenings In Our Parks



THE Record Photo  
SUNDAY regattas enliven Saddle River Park's Otto C. Pehle Area.

## BERGEN COUNTY PARK COMMISSION LAND ACQUISITION SUMMARY SOURCE OF APPROPRIATIONS AND DISBURSEMENTS

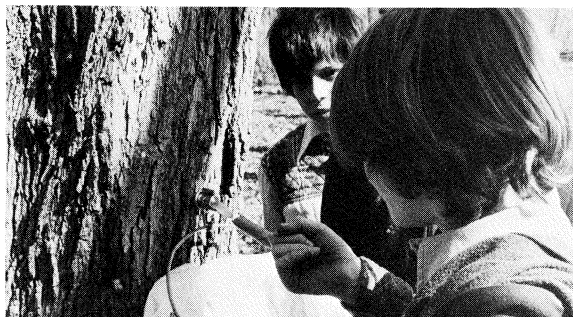
DESCRIPTION	Acreage	Disbursements	Appropriations
Park Commission Bond Funds (as adjusted) .....			\$ 5,354,200.08
Miscellaneous appropriation to Bond Account Re: Land Reclamation Corp. Prop. taxes .....			256.98
Park Commission Budget Funds .....			191,770.03
State of N. J. Green Acres Assistance Program (Joint Closing Account) .....			1,105,000.00
Capitol Funds Surplus, Re: Green Acres .....			170,000.00
Capital Funds Surplus (Budget) .....			16,532.00
Capital Funds Surplus, Re: Federal Open Space Land Program .....			189,068.00
Trust Account, County Parks, Re: State of N. J. Route No. 95, Overpeck above 2.92 El. ....			199,985.00
Trust Account, County Parks, Re: Green Acres, Overpeck, Tidal Lands .....			200,000.00
DISBURSEMENTS			
Private Properties Committed or Acquired			
Bond Account .....	3,985.29	\$6,766,417.46	
Budget Account .....	179.65	175,860.11	
Municipal and County Properties Committed or Acquired Bond Account .....	1,282.44	3,000.00	
Budget Account .....	100.81	2.00	
State Bureau of Navigation, Tidal Lands Acq.			
Trust Account .....		199,985.00	
Green Acres Account .....		200,000.00	
Budget Account .....		15.00	
Legals, Adv. Engineering, etc.			
Bond Account .....		55,639.60	
Budget Account .....		15,892.92	
Dec. 31, 1978 to Balance (Available Bond Funds on Hand)		7,416,812.09	7,426,812.09
		10,000.00	
	5,548.19	\$7,426,812.09	\$7,426,812.09

Prepared by J. Santimauro, Fin. Mgr.



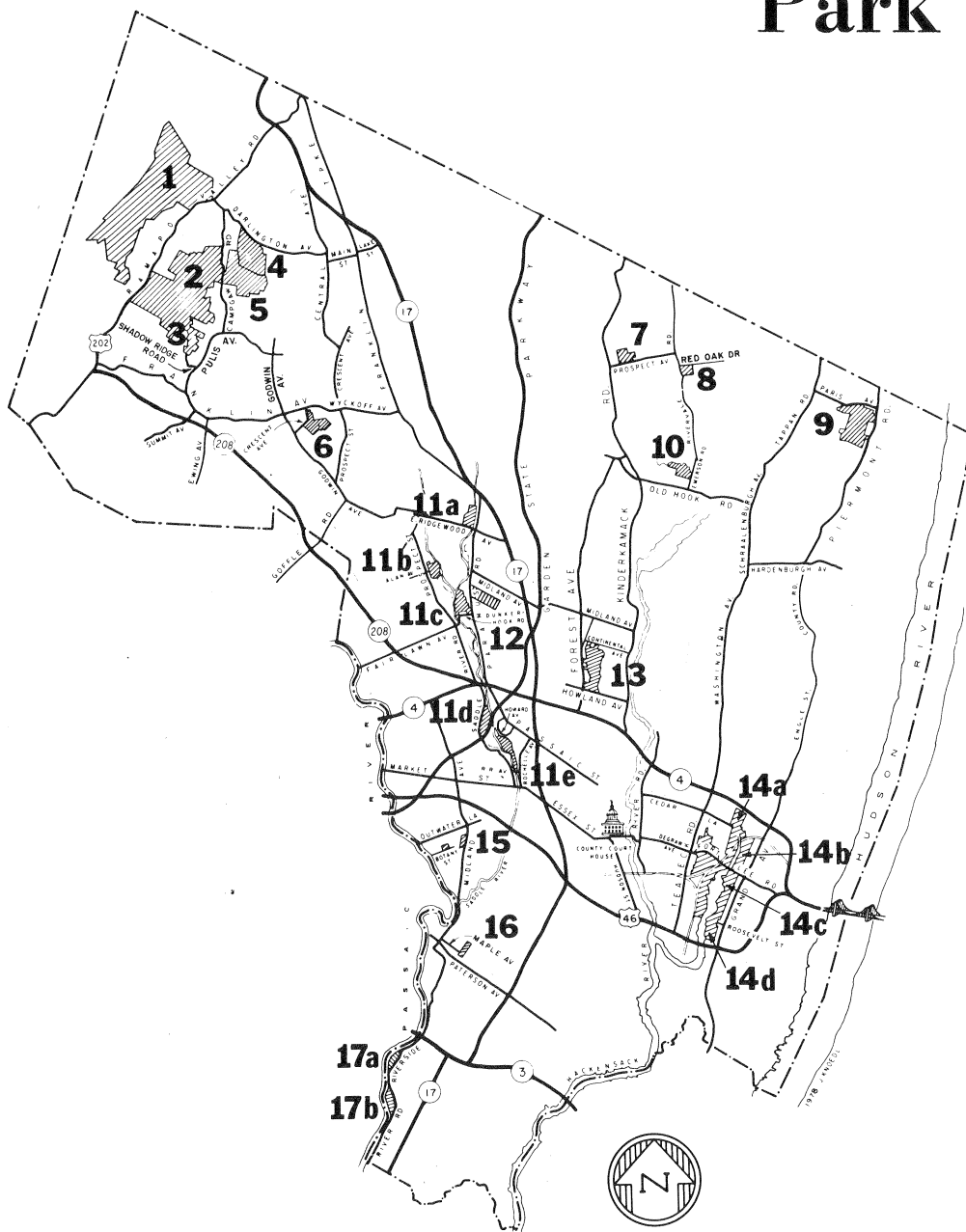
FOLKSINGING by Shirley Keller was presented at Van Saun Park.

MAPLE sugaring is demonstrated at Ramapo Valley Reservation.



THE BAYLOR Massacre was re-enacted 200 years later. A young guard is seen at the burial site.

# Bergen County Park System



## 1. RAMAPO VALLEY COUNTY RESERVATION

Ramapo Valley Road, (Route 202), Mahwah  
Hikers may explore the wooded hillside, with its mountain fishing pond and waterfall. Tent camping is permitted beside the Ramapo River and lower lake. Vehicles must be parked at the entrance. Canoe and raft owners have portage access to the Ramapo River. Sketch maps of the hiking trails are available from the ranger, the Wildlife Center, and Park Commission headquarters. There are guided hikes; ask at the Wildlife Center for information.

## 2. CAMPGAW MOUNTAIN COUNTY RESERVATION

Campgaw Road, Mahwah

This 1,351-acre wooded park has hiking trails (sketch map available from the ranger, the Wildlife Center, and Park Commission headquarters), campsites (some with tent platform or adirondack shelter), picnic facilities, and children's rustic play equipment.

**SKI CENTER:** Machine-made snow is sprayed on the 1,500-foot main slope, with two chair lifts (one has mid-station), and the 600-foot school slope, with T-bar lift. The 800-foot school slope and the center's two side trails, each about 2,000 feet long, depend on natural snow. The visitors' center has a wood fire in the lounge, a snack bar, and a shop which rents and sells skiing equipment, and the ski school office.

**NATURE EDUCATION:** There are public nature walks and programs, nature workshops, and programs for school classes and groups. (Information at the Wildlife Center.)

## 3. SADDLE RIDGE HORSEBACK RIDING AREA

Shadow Ridge Road, Franklin Lakes  
(Off Pulis Avenue)

Instruction is available, by appointment, and experienced riders may rent horses for guided trail riding and riding in the paddocks. Horse owners may pay an annual fee for use of paddocks and wooded trail. In winter call to be sure we're open.

## 4. DARLINGTON COUNTY PARK

Darlington Avenue, Mahwah

There is swimming in two of the three lakes on this rolling site in foothills of the Ramapo Mountains. The third lake affords fishing. There is an entrance fee during the swim-

ming season, Memorial Day weekend - Labor Day. The park has sand beaches, picnic groves, a fieldhouse with snack bar and open terraces, pavilions, children's playground, and courts for tennis, handball, and basketball.

The park is closed December 1-March 31.

## 5. DARLINGTON BERGEN COUNTY GOLF COURSE

Campgaw Road, Mahwah

This 18-hole course is under construction. Nine holes are scheduled to open in 1979.

## 6. BERGEN COUNTY PARK COMMISSION WILDLIFE CENTER

Crescent Avenue, Wyckoff

Visitors can see and learn about wildlife of this area's natural habitat. The exhibit hall, which overlooks the waterfowl pond, has a meeting room and a browsing library. Outside there are shelters for live animals and birds and a ¾-mile nature walk. A printed trail guide is available from the naturalist.

A schedule of free public programs is also available. For a summary of activities, see NATURE EDUCATION under For Your Enjoyment. Beside the drive there is a shaded terrace garden featuring rhododendron, and 25,000 daffodil bulbs dot the grassy slopes. Picnic tables are near the crossroad on the hill.

## 7. WOOD DALE COUNTY PARK

Prospect Avenue, Woodcliff Lake

The pond is the main attraction. In winter it is a popular ice skating area. In other seasons it affords fishing and model-boat sailing.

The park has free tennis courts with lights, picnic facilities, and a children's playground.

## 8. BAYLOR MASSACRE BURIAL SITE

Red Oak Drive, River Vale  
(Off River Vale Road)

Visitors to this shaded wayside historical park may read markers telling of the Sept. 28, 1778 Baylor Massacre and may see the millstone which long ago covered the burial place on this site. Victims whose remains were uncovered here in August, 1967 were members of a detail in Col. George Baylor's Continental Army Cavalry regiment. Fifteen dragoons died of wounds inflicted in a 2 A.M. British ambush.

## 9. ROCKLEIGH BERGEN COUNTY GOLF COURSE

Paris Avenue, Rockleigh

Lines form early at this 27-hole rolling course at the base of the Palisades' western slope.

The stone fieldhouse has a snack bar and pro shop. Golf cars and carts are available for rental.



#### 10. PASCACK BROOK COUNTY PARK

Emerson Road, Westwood

A picnic grove overlooks the fishing pond. The park has three free tennis courts with lights, a practice backstop, a children's playground, and two ball fields.

#### 11. SADDLE RIVER COUNTY PARK

This linear park will eventually flank Saddle River for 5½ miles, and will have scenic drives and paths. The park has five recreation areas and additional facilities.

##### a. Wild Duck Pond Area

East Ridgewood Avenue  
Ridgewood

Ducks and geese abound on the pond, which is a popular center for ice skating and fishing.

The park area has extensive picnic facilities, a large children's playground, and shuffleboard and horseshoe courts. Plans call for linking this Area with the NORTH TRAIL (see below).

##### b. Glen Rock Area

Alan Avenue, just east of Prospect Street

Here too the pond is the focal point, affording fishing and model boat sailing. The area has picnic facilities, free tennis courts, a children's playground, a bicycle path (see THE NORTH TRAIL below), and a rink which is flooded in winter for ice skating.

##### c. Dunkerhook Area

Dunkerhook Road, Paramus

The cool shade of wooded picnic areas is especially welcome on a hot day. Dunkerhook Area has a children's playground, horseshoe courts, and bicycle-pedestrian trail access to free tennis courts across the Saddle River—in Fair Lawn—and to the Glen Rock Area. (See THE NORTH TRAIL below).

##### d. Otto C. Pehle Area

Saddle River Road, Saddle Brook

Picnic groves and a fishing lake are the most popular attractions. Model sailboat regattas may sometimes be seen on the lake. A bicycle-pedestrian path circles the lake and continues southward beside the Saddle River. (See THE SOUTH TRAIL below.) The area has a children's playground and facilities for baseball, football, soccer, ice skating, and horseshoe pitching.

##### e. Rochelle Park Area

Railroad Avenue

There are picnic tables along the 1-mile streamside park drive. Other facilities include free tennis courts, a bicycle path (see THE SOUTH TRAIL below), a children's playground, bocce courts, and a

play rink which is flooded in winter for ice skating.

##### Tower Restoration, Arcola, Paramus

THE TOWER and paddle wheel, focal points of the famed Easton gardens, were reconstructed above the ruins of the original complex built circa 1900 near the site of the historic 1745 Red Mill. The reconstructed landmark may be seen from Saddle River Road south of Route 4. Two BICYCLE-PEDESTRIAN trails, each 3 miles long, are in the park. One is north of Route 4, the other south of Route 4.

THE NORTH TRAIL starts at Williams and Union Streets, Fair Lawn, follows the stream, cuts through the Dunkerhook Area, and continues to the Glen Rock Area lakeside path. There is an access path to the trail from the intersection of Saddle River Road and Fair Lawn Avenue, Fair Lawn. Plans have been drawn for a 1¼-mile extension to the Wild Duck Pond Area.

THE SOUTH TRAIL includes paths in the Otto C. Pehle Area in Saddle Brook and the Rochelle Park Area. They are linked by a bicycle-pedestrian bridge and by the Railroad Avenue bridge, which has a bicycle-pedestrian lane.

THREE TENNIS COURTS are in the Fair Lawn portion of the park. Play is free. Access is from the North bicycle-pedestrian trail and from the parking area off Dunkerhook Road west of the Saddle River. FISHING is permitted along the Saddle River banks where accessible within the park.

#### 12. ORCHARD HILLS BERGEN COUNTY GOLF COURSE

Paramus Road, Paramus

Mature trees and shrubs grace this nine-hole course on Bergen Community College property. The Park Commission renovated the course and is operating it under contract with the College.

The course may be played twice per greens fee.

The golf course has food vending machines and a small pro shop.

#### 13. VAN SAUN COUNTY PARK

Entrances on Forest and Continental Avenues, Paramus and Howland Avenue, River Edge

The zoo and railroad are the best known attractions at this popular park. Trains pass the zoo, a walk-through aviary, and an 1860's farmyard scene. Plans are being drawn for expansion and renovation of the zoo.

A 12-court tennis center, a 6-acre lake which affords fishing and ice skating, picnic groves, children's playgrounds, and a shaded garden around historic Washington Spring

are among other features of the park. Park facilities include a pony ring, a snack shop (open April-October, weather permitting), a bicycle-pedestrian path, shuffleboard and horseshoe courts, sledding slopes, ball fields, and an open play area. Free tennis clinics are conducted in summer for registered residents aged 8-17.

#### 14. OVERPECK COUNTY PARK

This 813-acre meadowland site is being developed gradually as Bergen County's central park with a variety of recreation facilities. Excavation of Overpeck Lake's 37-acre section north of Fort Lee Road has been completed, and the 120-acre section to the south is being excavated. Plans call for lakeside picnic areas and paths. Visitors fish from the lake shore. Current park facilities include:

##### a. Overpeck Bergen County Golf Course East Cedar Lane, Teaneck

There are two ponds, two lagoons, and an 8-acre lake on this 18-hole course. The contemporary redwood golf house contains a lounge, snack bar, deck, and pro shop.

##### b. Leonia North Area Fort Lee Road

This area has four free tennis courts with lights and practice backstop, football and baseball and soccer fields, an 8-lane running track, and facilities for field events. A 1¼-mile bicycle-pedestrian path forms a figure-8 beside the lake. (The soccer field is scheduled to open in 1979).

##### c. Leonia South Area Fort Lee Road

An all-weather HORSEBACK RIDING CENTER is the main attraction. It has an indoor riding arena and paddocks. Group riding lessons are offered by appointment. Horse rental without instruction is open only to qualified expert riders. Horse owners may pay an annual fee for use of outdoor facilities and an hourly fee for use of the arena (subject to availability).

The park area has a wild west playground, picnic tables, and a rink which is flooded in winter for ice skating. A wildlife refuge adjoins the area.

##### d. Palisades Park Area Roosevelt Street, off Grand Avenue

Sports facilities in this section are four free tennis courts with lights and practice backstop, sodded baseball and football fields with bleachers, a softball field, horseshoe courts, a motocross bicycle course, a running track, and facilities for field events. The area has 40 picnic tables.



PLAYGROUNDS are happy places.

#### 15. COUNTY PARKS IN GARFIELD

Dahnert's Lake  
Midland Avenue

The pond is the center of activity. It affords ice skating, fishing, and model boat sailing. The park has picnic facilities, a children's playground, and bocce courts.

Belmont Hill  
Botany Street

A hilltop rose garden containing more than 55 rose varieties attracts many visitors in June and early fall. The park also has a scenic lookout, children's play equipment, and picnic tables.

#### 16. WALLINGTON COUNTY PARK

Rose Street, Off Paterson Avenue  
Wallington

The pond is used for ice skating, fishing, and model boat sailing. There are free tennis courts and sledding slopes in the park. Other facilities are ball fields, picnic tables, and a children's playground.

#### 17. RIVERSIDE COUNTY PARK

Both the North and South Areas of this southwest Bergen park are on the Passaic River. There is a soccer playing area where the two park areas adjoin.

##### a. North Area Riverside Avenue, Lyndhurst

Recreation facilities include free tennis courts with lights, shuffleboard and horseshoe and bocce courts, picnic groves, a children's playground, ball fields, and a 7/10-mile bicycle-pedestrian path. Field No. 1 has lights and a fieldhouse. There is a play rink which is flooded in winter for ice skating.

##### b. South Area River Road, North Arlington

The children's railroad, which operates on Sundays April-October, and a wild west playground are the youngsters' favorite features here. The park area has 5 free tennis courts (lights and practice backstop at 3), picnic facilities, ball fields, horseshoe courts, and a play rink divided into 4 sections—3 for tennis practice and 1 for basketball.



## **Bergen County Park Commission Annual Report, 1978**

---