

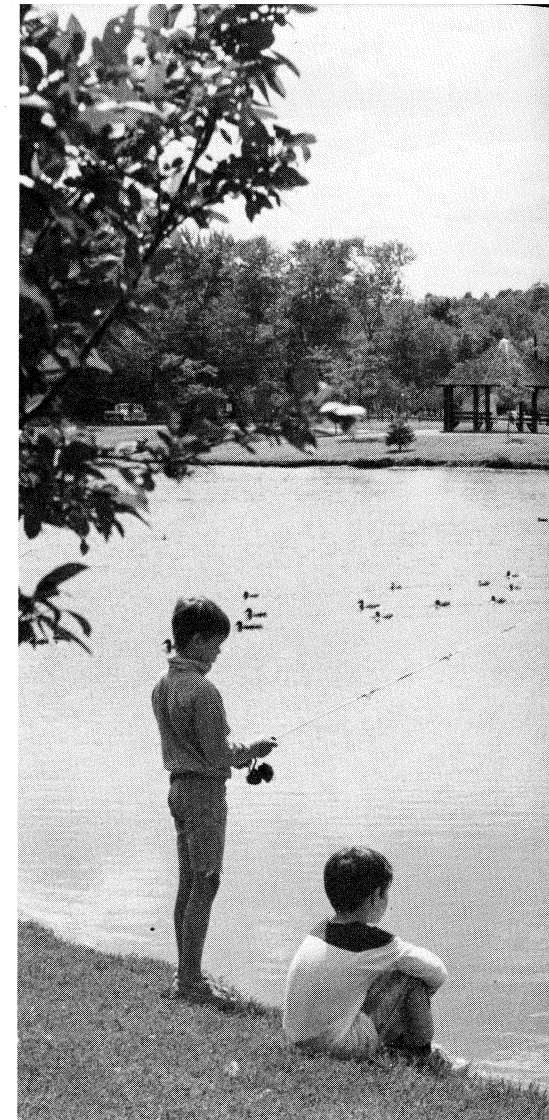


Bergen County Park Commission

Annual Report, 1977



AN OLD-FASHIONED train passes an old-fashioned garden at Van Saun Park.



FISHING and duck watching are pleasant summer pastimes in Wood Dale Park.

BERGEN COUNTY PARK COMMISSION, 1977

Hackensack, New Jersey

Otto C. Pehle, President

Wilbur J. Lotz, Vice President

George Warchol

Henry G. Avery, Secretary

Salvatore J. Pennisi

D. Richard Sanfilippo, Asst. Secretary

John Bombace

Lawrence E. Nyland

Frank J. Cikutovich

James A. McFaul, Executive Director

William L. Mann, Assistant Executive Director

Timothy J. Sullivan, Assistant County Counsel

COVER PICTURE: Campers enjoy the wooded sites at Campgaw Mountain County Reservation. There is also camping at Ramapo Valley County Reservation.

BOARD OF CHOSEN FREEHOLDERS, 1977

Jeremiah F. O'Connor, Director

Doris Mahalick, Deputy Director

Joan Lesemann

Gerald A. Calabrese

D. Bennett Mazur

Joseph A. Carucci, Chairman,

Park and Recreation Committee

Charles E. Reid

Harry J. Gerecke

Joan Steinacker

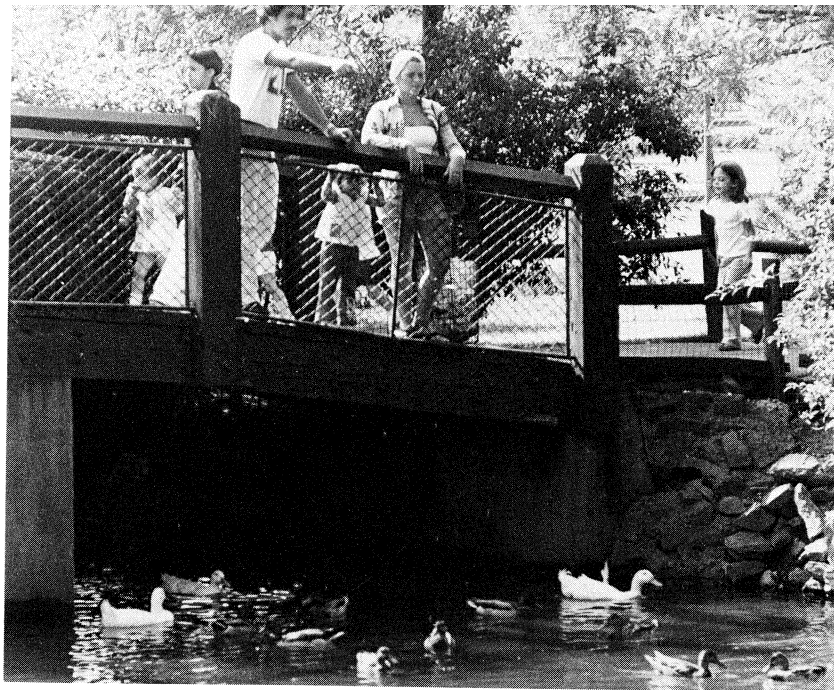
Stephen J. Cuccio, County Administrator

Vincent P. Rigolosi, County Counsel

THERE ARE 43 sheet asphalt tennis courts in the Bergen County park system.



DUCKS in the zoo pond delight visitors crossing this bridge and the covered bridge.



There's Plenty of Fun Despite Cutbacks

New Jersey's State-mandated budget cap necessitated the first curtailment of services in Bergen County Park Commission history, but we managed to retain most of the recreation opportunities so important to park visitors.

We tried to make our cuts where they would hurt the least. Children's railroad operation was trimmed a bit, but the trains chugged away all season. Darlington closed Monday - Thursday in June while schools were still in session, but daily swim-season operation began when school was out.

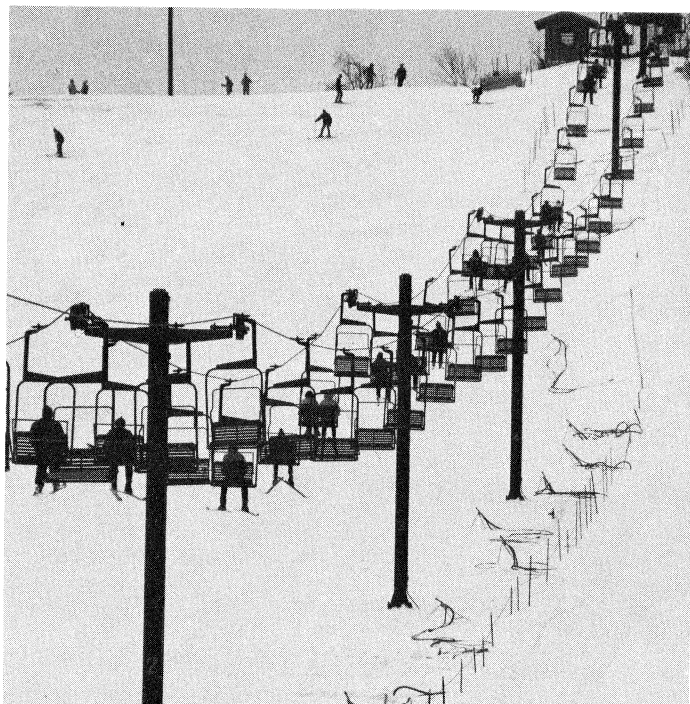
Regrettably, we had to eliminate summer concerts in the parks, but we retained the free tennis clinics for Bergen youngsters, the adult tennis tournament, the outdoor story hours, and the annual outdoor art show — and we actually increased our popular nature-education activities.

Fully aware of how much the public enjoys our county parks, the Bergen County Park Commission and the Board of Chosen Freeholders will do all within their power — and within budget limitations — to meet residents' active and passive recreation needs. We will press for the means to enhance existing facilities and to develop and staff much needed additional facilities.

OTTO C. PEHLE
Bergen County Park Commission President

MACHINE-made snow extends the skiing season at Campgaw.

The Record Photo



ROCKLEIGH Course, with 27 holes, attracts golfers from all Bergen regions.



Three Playgrounds and a Bicycle Trail

Bergen County park system additions in 1977 included two playgrounds which can be enjoyed by handicapped children, bridge approaches which completed a 3-mile bicycle-pedestrian trail in Saddle River County Park, a wild west playground in Overpeck County Park, and three soccer playing areas.

LOOKING TOWARD 1978

Construction was under way on an eight-lane bluestone running track in Overpeck Park's Leonia North Area, and a contract was awarded for construction of field-event facilities nearby. Also, contracts were awarded for construction of bocce courts in three park areas and the drainage system and parking area for Darlington Golf Course. Plans were drawn for two additional octagonal animal shelters at the Bergen County Park Commission Wildlife Center in Wyckoff. Specifications were prepared for elevated bleachers at the football field in Overpeck Park's Leonia North Area.

State Green Acres funds were approved for half the cost of rebuilding and resurfacing the 12 tennis courts at Van Saun Park. (The work is to be done in 1978.)

Eighteen-hole Darlington Golf Course in Mahwah and Ramsey was approximately 80 per cent completed at the end of 1977. Announcement was made that the anticipated 1978 opening would have to be deferred to 1979 because three heavy storms — with flooding — prevented seeding of the course.

HANDICAPPED CAN PLAY TOO

The two playgrounds which were renovated so that they can be enjoyed by handicapped children, as well as other children, are at Van Saun Park in Paramus and River Edge and Riverside County Park's North Area in Lyndhurst. Play equipment includes specially designed swings and slides, elevated sandboxes, smooth climbing toys, and a tunnel children can pull themselves through by grasping overhead bars. There are asphalt paths, simplifying wheelchair use, and special picnic tables to accommodate wheelchairs.

Rest rooms in Van Saun Park Areas F and K were modified so that they can be utilized by persons in wheelchairs. The Van Saun playground with special features for handicapped children is the one nearest the zoo. Federal Community-Development funding was obtained for the projects through efforts of Freeholder Joan Lesemann.

The new wild west playground in Overpeck Park's Leonia South Area includes a prairie schooner climber, a frontier outpost watch tower with slide and climber, three metal tepees, a cactus climber, six bucking broncos mounted on heavy springs, a framework climber shaped like an Overland Express, and a hobby horse swing set.

THREE-MILE SOUTH TRAIL

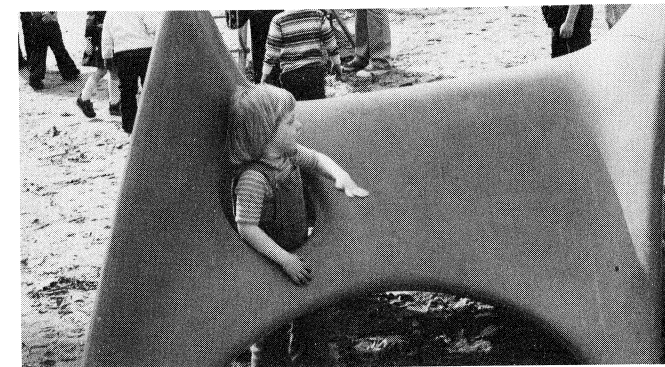
Approaches were built for the 145-foot bicycle-pedestrian linking bicycle-pedestrian paths in the Otto C. Pehle (Saddle Brook) and Rochelle Park Areas of Saddle River County Park. The new bridge, the Railroad Avenue bridge, and the two streamside paths form a loop for bicycle and pedestrians. The 3-mile trail includes 5,900 feet of streamside path and 4,007 feet of lakeside path in the Otto C. Pehle Area and 6,150 feet of streamside path in the Rochelle Park Area. (Saddle River County Park also has a 3-mile bicycle-pedestrian trail north of Route 4.)

Baseball outfields are utilized for the new county park soccer playing areas. They are at Van Saun Park, at Saddle River Park's Otto C. Pehle Area, and at Pascack Brook County Park. Soccer goal posts will be removed for the baseball season. At the end of 1977 plans were under way for a regulation soccer field to be constructed north of the football field in Overpeck Park's Leonia North Area.

BOCCIE COURTS COMING

Bocce courts will be built at Dahner's Lake County Park in Garfield, Riverside County Park's North Area in Lyndhurst, and Saddle River County Park's Rochelle Park Area. There will be two courts at each park area.

The Board of Freeholders made official the



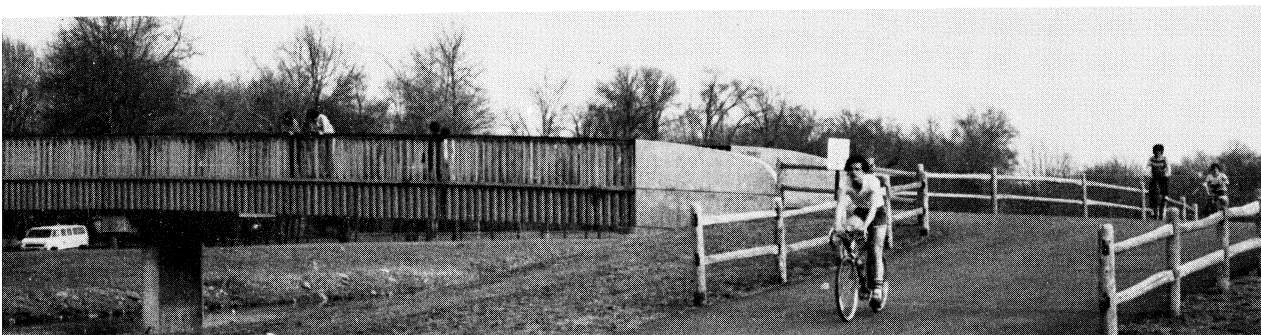
TWO PLAYGROUNDS were renovated so that they can be enjoyed by handicapped children. One is in Van Saun Park, the other in Riverside Park's North Area.

addition of 220 acres of Lyndhurst meadowland and 7.64 adjoining acres in North Arlington to the Bergen County Park system for future use. Development must await completion of sanitary land fill operations on the property and sufficient time for the refuse to settle and compact.

Ridgefield Park's suit calling for development of Overpeck Park property in that municipality

was settled in August. Terms of the settlement call for completion of development in 1986. Facilities are expected to include a small-boat marina, tennis courts, athletic fields, and a lakeside amphitheater. (It is possible that the marina and tennis courts will be situated on Teaneck land adjacent to the Ridgefield Park property.)

BRIDGE approaches were built, completing Saddle River Park's 3-mile south bicycle trail.



Are Completed in 1977

ADDED ACREAGE SOUGHT

The Park Commission and Board of Freeholders took steps toward acquisition of approximately 714 acres in Mahwah for park use. The property, which comprises five separately owned contiguous parcels, adjoins Ramapo Valley County Reservation. A title search was in progress as 1977 ended.

Among Park Commission projects completed in 1977 were demolition of barracks and three radar towers at Saddle Ridge Horseback Riding Area — on the site of a former Nike-Hercules missile control station; razing of what had been the foreman's building in Van Saun Park; installation of lights at tennis courts in Overpeck Park's Leonia North Area; resurfacing of park drives in Van Saun Park, Campgaw Mountain Reservation, and Saddle River Park's Glen Rock Area; installation of burglar and fire alarm systems at Campgaw Reservation, Darlington Park, and Riverside Park's North Area; and replacement of the roof on the Wildlife Center exhibit building.

NATURE PROGRAMS POPULAR

Park Commission nature education projects included 156 free public programs and guided hikes, 1,057 presentations for school classes (there were 15 choices of topic), nature workshops, winter birding classes, maple sugaring demonstrations, and nature and conservation exhibits.

The Park Commission sponsored free vacation tennis clinics for Bergen residents aged 8-17 and the annual tennis tournament, seven outdoor story hours, and the thirteenth annual outdoor art show — all at Van Saun Park. Average attendance at the tennis clinics was 75. The tennis tournament had 469 singles entries and 546 doubles entries. There were 195 entrants in the art show. A show catalogue was an innovation. (Van Saun Park was host to the Bergen County Tennis Coaches' Junior Tournament, which had 420 entrants.)

MOUNTED TRAIL PATROL

A mounted patrol was inaugurated in 1977

MAPLE SUGARING attracted crowds at Ramapo Valley Reservation. Sap buckets were collected, the contents boiled, and the end product tasted.

for Campgaw Mountain and Ramapo Valley Reservations and Saddle Ridge Horseback Riding Area. The horse was able to get into wooded areas not accessible to vehicles, enabling the ranger to make thorough checks for safety hazards and signs of trouble.

The Park Commission's 1977 current-funds budget allocated by the Board of Chosen Freeholders was \$4,608,865, of which \$3,208,065 went to salaries and wages.

Park Commission revenue, which is turned over to the County Treasurer, totaled \$1,659,955 in 1977 as compared to \$1,528,953 in 1976. The largest revenue subtotal was \$371,738, from Rockleigh Bergen County Golf Course. Swimming season revenue from Darlington County Park totaled \$295,452. Overpeck Golf Course yielded \$266,035, Overpeck Riding Center \$151,948. Campgaw Mountain Ski Center took in \$126,357. The total for Orchard Hills Golf Course was \$118,441.

REVENUE ADDS UP

Other 1977 revenue totals: registration and park-use fee permits, \$103,369; Saddle Ridge Horseback Riding Area, \$60,827; miscellaneous, \$58,140; Van Saun Park children's railroad, \$57,536; tennis center at Van Saun Park, \$26,849; pony rides at Van Saun, \$15,298; and the Riverside Park children's railroad, \$7,965.

Between December 27, when the ski center opened, and the end of the month, 4,913 lift tickets were sold.

Park Commission personnel constructed a variety of things, among them zoo pen gates, heated monkey boxes, feeding racks, cabinets, paddock gates, signs, and a shelter for the ice skating guard at Van Saun Park. Play equipment and benches were assembled and installed. At Van Saun Park the children's railroad tracks were regauged and moved.

Fall floods caused damage and left debris in parks, necessitating repairs and extensive cleanup.

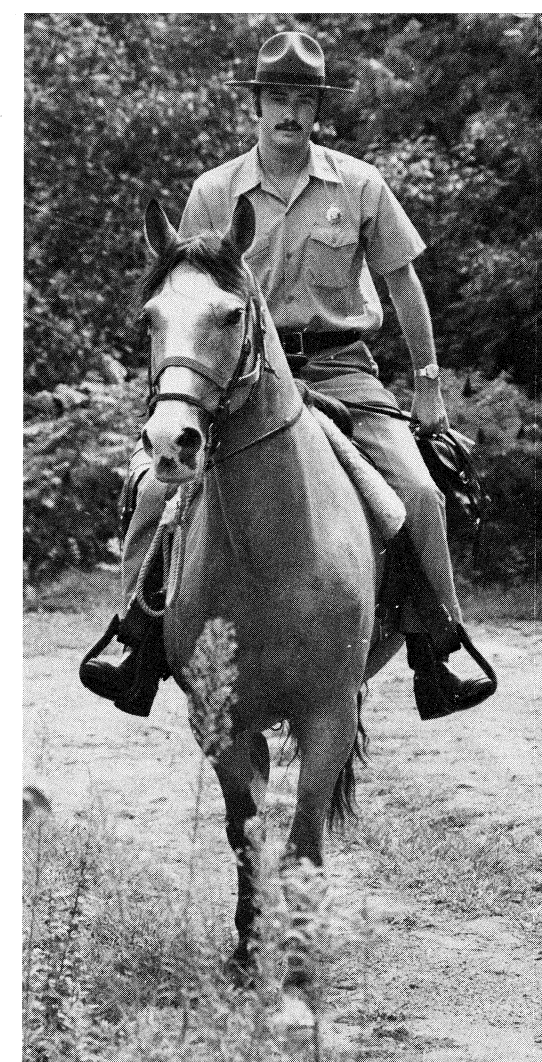
REPAIRS KEEP CREWS BUSY

Regular chores for Park Commission crews include repairing, painting, cleanup of litter and

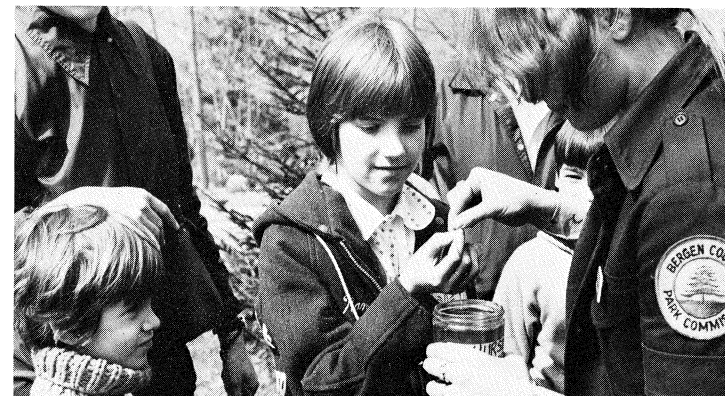
debris, drainage work, grading and filling, utility installation, tree work, land clearing, erecting fences and signs, vehicle maintenance, cleaning of stables, and collection of garbage from county institutions as well as parks. (Because of widespread vandalism, considerable manpower and money must be used for repairs and replacement.)

There are seasonal chores, such as readying the ski center and ice skating areas and sledding slopes, winterizing buildings and plantings, snow plowing, fixing up the picnic tables, putting new sand on the Darlington beaches and filling the swimming pools, fertilizing, spraying, seeding and planting, raking, mowing, weeding, and pruning.

Like women's work, park chores are never done.



A MOUNTED ranger patrols the trails.
The Record Photo



Your Wildlife Center —

There's a place not far away where you can watch waterfowl, deer, a bobcat, foxes, hawks, frogs, snakes, fish, turtles, and assorted other live creatures — where you can see fossils, rocks, shells, mounted specimens, seasonal exhibits, and 25,000 daffodils — where you can follow a nature trail and stroll through a woodland garden — where you can take a nature test on a light-up electronic quiz board — where you can sit at a table and look through nature books.

We are talking about the Bergen County Park Commission Wildlife Center on Crescent Avenue, Wyckoff, a nice place to visit and a place where there is a lot going on. There are free public programs on Saturday and Sunday afternoons seven months of the year and Tuesday afternoons 11 months of the year. Special events have included flower and garden shows, a Sun Day mini-fair, and National Wildlife Week film showings.

In spring, summer, and fall there are scheduled events — chiefly guided nature hikes — at Campgaw Mountain and Ramapo Valley County Reservations.

Park Commission naturalists schedule special programs for school classes, scout troops, and other organizations at the Wildlife Center and the two reservations.

There are summer nature workshops for children and adults and winter workshops for adults.

Annual events include maple sugaring demonstrations, guided cross-country ski tours, and vacation-week children's film festivals.

The Wildlife Center and the two reservations afford visitors a chance to marvel at the world of nature and to take refuge from Metropolitan Area complexities and environmental abuses.

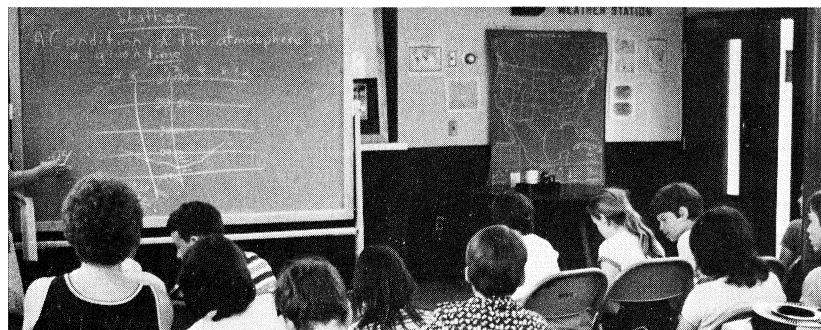
SUN DIAL readings are taken at the terrace of the woodland garden.



THE EXHIBIT HALL is the center of activity. A window wall in the rear looks out on the waterfowl pond. Mounted binoculars provide a closer look.



PROGRAMS are scheduled for the public, classes, and clubs.



A Nice Place to Visit

THE WORLD of nature fascinates workshop and class-trip participants.

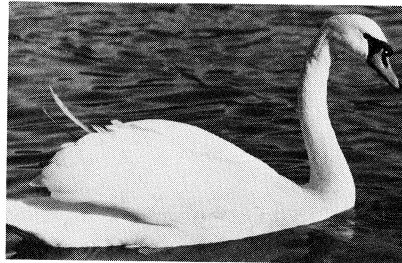
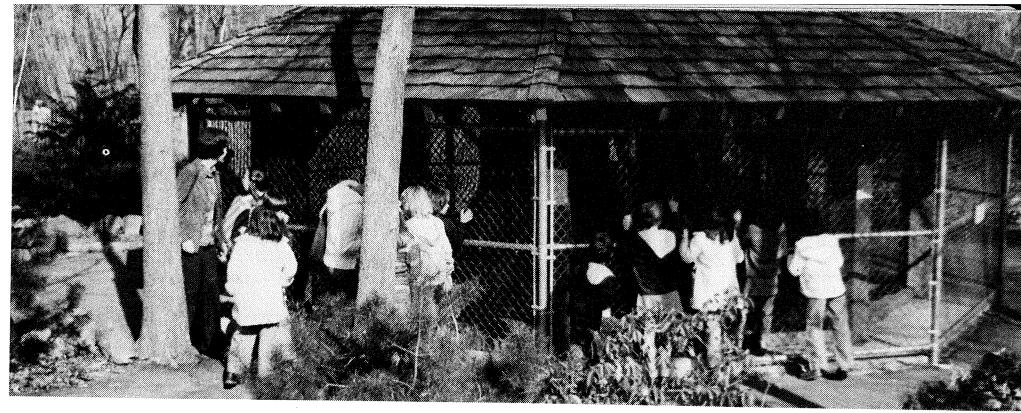
LIVE animals and birds in octagonal shelters attract rapt audiences.

SWANS grace the pond.

THE NATURE trail is a small wilderness refuge. A printed guide may be borrowed.
The Record Photo

NATURE exhibits include live creatures and touch and test.

DEER may be seen from the nature trail.





INSTRUCTION is available at Overpeck and Saddle Ridge riding areas.

COUNTY PARK ACREAGE

BERGEN COUNTY PARK COMMISSION

PARK	MUNICIPALITY	ACREAGE
✓ Darlington County Park	Mahwah & Ramsey 231.11 83.13	314.24
✓ Campgaw Mt. County Reservation	Mahwah, Oakland & Franklin Lakes 1056.42 189.12 105.56	1351.10
✓ Bergen County Wildlife Center	Wyckoff	81.34
✓ Wood Dale County Park	Woodcliff Lk., Hillsdale & Park Ridge 55.01 52.72 9.82	117.55
✓ Rockleigh Bergen County Golf Course	Rockleigh, Norwood & Northvale 164.12 90.07 9.93	264.12
✓ Pascack Brook County Park		
a) Pascack Brook Area	Westwood, River Vale 117.71 19.63	
b) Overbrook Minipark	Westwood 2.79	140.13
✓ The Baylor Massacre County Park	River Vale	2.00
✓ Saddle River County Park		
a) Wild Duck Pond Area	Ridgewood 81.84	
b) Glen Rock Area	Glen Rock 64.31	
c) Dunkerhook Area	Paramus 171.60	
d) Saddle Brook Area	Saddle Brook 79.87	
e) Rochelle Park Area	Rochelle Park 84.12	
f) Fair Lawn Area	Fair Lawn 93.81	575.55
✓ Van Saun County Park	Paramus & River Edge 53.32 86.40	139.72
✓ County Parks in Garfield	Dahnert's Lake & Belmont Hill 9.53 9	18.53
✓ Overpeck County Park	Englewood, Leonia, Teaneck, Ridgefield 7.71 168.31 471.93 1.31	
	Ridgefield Park & Palisades Park 99.26 63.60	812.12
Wallington County Park	Wallington	22.99
✓ Riverside County Park		
a) North Area	Lyndhurst 76.46	
b) South Area	North Arlington 32.06	108.52
✓ Ramapo County Reservation	Mahwah	714.21
✓ Undeveloped County Park Areas	Alpine 190.55 River Edge .08 Lyndhurst 220.00 North Arlington 7.64	5080.39

REPORT OF PARTICIPATING FUNDS RECEIVED FROM ASSISTANCE PROGRAMS LAND ACQUISITION

December 31st, 1977

Date	Project	Town	Acres			
1) 12/13/62	Land for 9-hole addition to Rockleigh Golf Course	Norwood	86.80	\$ 260,000.00	State Green Acres	\$ 130,000.00
2) 3/18/63	Open space reserve	Alpine	93.10	400,000.00	State Green Acres	200,000.00
3) 4/26/63	Wildlife Center site	Wyckoff	81.35	400,000.00	State Green Acres	200,000.00
4) 1/15/64	Open space reserve	Alpine	97.45	310,000.00	State Green Acres	155,000.00
5) 2/ 9/65	Additional Saddle River Park property	Paramus	3.63	50,250.00	State Green Acres	25,125.00
6) 3/17/65)	Darlington Park site	Mahwah, Ramsey	178.26	1,150,000.00	State Green Acres \$575,000.00	
8/ 2/65)	Darlington Park site	" "	—	(HUD)	U.S. Housing & Home Fin. 764,068.00	
					Agcy. \$189,068.00	
7) 6/15/67)	Addition to Camp- gaw Reservation	Mahwah	59.75	137,418.00	State Green Acres \$ 68,709.00	
6/ 9/69)	Addition to Camp- gaw Reservation	"	—		U.S. "HUD" 137,418.00	
					\$ 68,709.00	
8) 10/ 2/72)	Ramapo Valley Reservation site	Mahwah	624.21	1,560,527.50	State Green Acres \$780,263.00	
3/12/73)	Ramapo Valley Reservation site	"	—		U.S. "BOR" 1,560,526.75	
					\$780,263.75	
9) 1/11/68	Overpeck Park tidal lands	Teaneck, Leonia, Englewood, Pal. Pk., Ridgefield Park	* 399.29	400,000.00	State Green Acres	200,000.00
			1,623.84	\$4,668,195.50		\$3,372,137.75

IMPROVEMENTS

10) 6/27/68	Improvements at Wildlife Center	Wyckoff	(81.35)	\$ 297,136.18	U.S. "BOR"	\$ 148,568.09
11) 5/19/76	Improvements	Pascack Brook			" "	109,890.44
12) 7/ 9/76	"	Wallington			" "	35,090.00
				\$4,965,331.68		**\$3,665,686.28

* While the County of Bergen was the owner in fee of these lands, the State of New Jersey, through extensive negotiations with the County, established its claim that this property (399.29 acres of a total of 813.43 acres in the Overpeck Area) was tidal land and as such was the property of the State. After receiving in payment from the County a fee of \$1,000.00 an acre—totalling \$400,000, the State granted the County a Riparian Grant. Subsequently the State, through the Green Acres Assistance Program, reimbursed the County half the cost (\$200,000) of this Riparian Grant.

** It is interesting to note that the County, through the Bergen County Park Commission, has received from the various State and Government Agencies, 71% of the total cost of the above 10 projects.

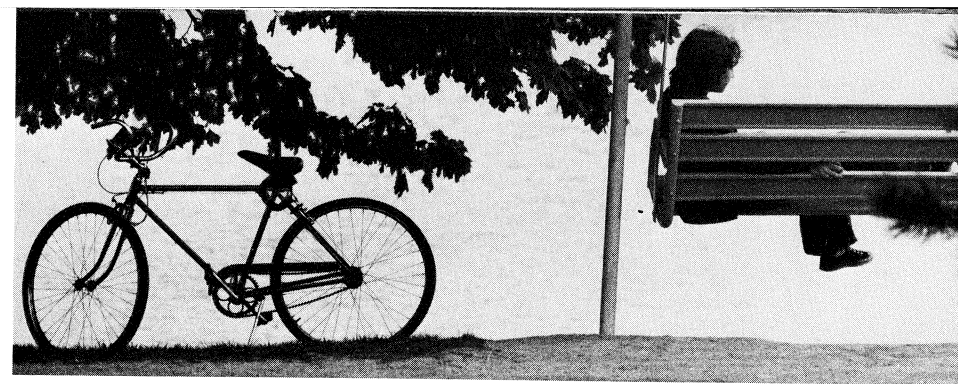
SUMMARY

Total contributed by State Green Acres Assistance Program	\$2,334,097.00
Total contributed by U.S. Government Agencies	1,331,589.28
	\$3,665,686.28

**CONDENSED STATEMENT OF PROPERTIES
COMMITTED OR ACQUIRED FOR PARK PURPOSES
COMBINED BOND, BUDGET, AND OTHER CAPITAL FUNDS**

Close of December 31, 1977

AREA	SUB-TOTAL		TOTALS	
	Acreage	Cost	Acreage	Cost
OVERPECK CREEK				
Private properties purchased	99.48	\$458,874.00		
Municipal properties donated or committed	712.64			
State Tidal Lands purchased		400,000.00	812.12	\$858,874.00
PASSAIC RIVER				
Private properties purchased	49.86	121,320.00		
Private properties donated	0.07	1.00		
Municipal & County properties donated or committed	309.22		359.15	121,321.00
SADDLE RIVER				
Private properties purchased	499.07	619,005.00		
Private properties donated	10.09	1.00		
Municipal properties donated	66.39	3,000.00	575.55	622,006.00
SOUTHWEST BERGEN				
Private properties purchased		2,200.00		
Municipal properties donated	18.53	2.00	18.53	2,202.00
VAN SAUN				
Private properties purchased or committed	138.33	204,709.73		
Private properties donated	1.39		139.72	204,709.73
NORTHWEST BERGEN				
Private properties purchased	2,227.88	4,152,259.21		
Private properties donated	56.88			
Municipal properties donated	52.50			
Exchange of property with Public Utility	25.06			
County property dedicated for Park purposes	98.57		2,460.89	4,152,259.21
NORTHEAST BERGEN				
Private properties purchased	438.00	1,097,806.75		
Private properties donated	14.11			
Municipal properties donated	2.56		454.67	1,097,806.75
PASCACK BROOK				
Private properties purchased	24.67	53,221.88		
Municipal properties donated	117.46		142.13	53,221.88
PASCACK VALLEY				
Private properties purchased	109.98	232,869.00		
Private properties donated	0.88			
Municipal properties donated	6.69		117.55	232,869.00
HACKENSACK RIVER				
Private properties purchased			0.08	10.00
ALL AREAS				
Legals, Advertising, Engineering, etc. .				71,532.52
			5,080.39	\$7,416,812.09



A SWINGING park bench is a good place for daydreaming.

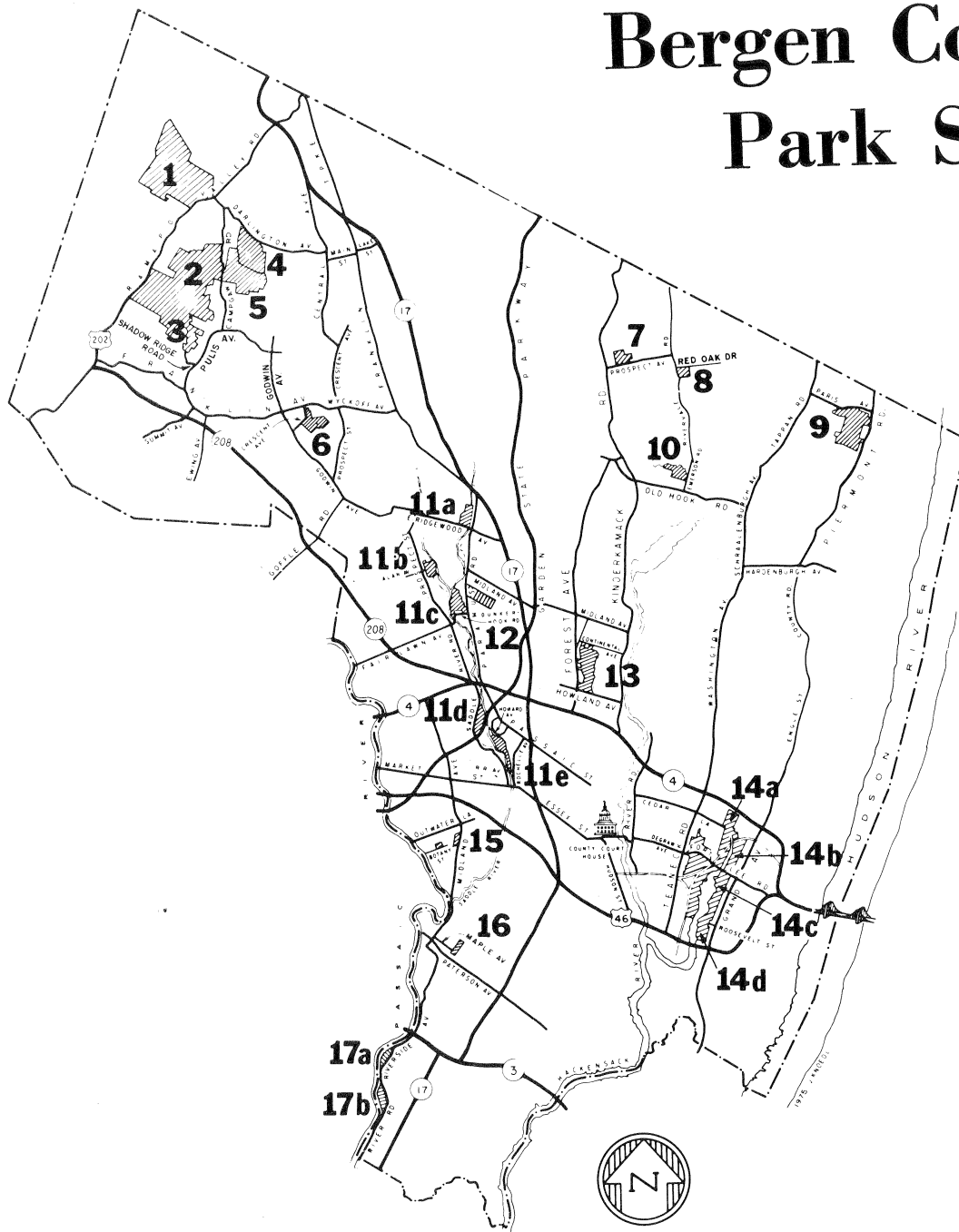
The Record Photo

**BERGEN COUNTY PARK COMMISSION
LAND ACQUISITION
SUMMARY
SOURCE OF APPROPRIATIONS AND DISBURSEMENTS**

DESCRIPTION	Acreage	Disbursements	Appropriations
Park Commission Bond Funds (as adjusted)			\$ 5,354,200.08
Miscellaneous appropriation to Bond Account Re: Land Reclamation Corp. Prop. taxes			256.98
Park Commission Budget Funds			191,770.03
State of N. J. Green Acres Assistance Program (Joint Closing Account)			1,105,000.00
Capitol Funds Surplus, Re: Green Acres			170,000.00
Capital Funds Surplus (Budget)			16,532.00
Capital Funds Surplus, Re: Federal Open Space Land Program			189,068.00
Trust Account, County Parks, Re: State of N. J. Route No. 95, Overpeck above 2.92 El.			199,985.00
Trust Account, County Parks, Re: Green Acres, Overpeck, Tidal Lands			200,000.00
DISBURSEMENTS			
Private Properties Committed or Acquired			
Bond Account	3,516.18	\$6,766,417.46	
Budget Account	179.65	175,860.11	
Municipal and County Properties Committed or Acquired Bond Account	1,283.75	3,000.00	
Budget Account	100.81	2.00	
State Bureau of Navigation, Tidal Lands Acq.			
Trust Account		199,985.00	
Green Acres Account		200,000.00	
Budget Account		15.00	
Legals, Adv. Engineering, etc.			
Bond Account		55,639.60	
Budget Account		15,892.92	
Dec. 31, 1977 to Balance (Available Bond Funds on Hand)		7,416,812.09	7,426,812.09
		10,000.00	
	5,080.39	\$7,426,812.09	\$7,426,812.09

Prepared by J. Santimauro, Fin. Mgr.

Bergen County Park System



1. RAMAPO VALLEY COUNTY RESERVATION

Ramapo Valley Road (Route 202), Mahwah
Hikers may explore the wooded hillside, with its mountain fishing pond and waterfall. Tent camping is permitted beside the Ramapo River and lower lake. Vehicles must be parked at the entrance. Canoe and raft owners have portage access to the Ramapo River. Sketch maps of the hiking trails are available from the ranger and the Wildlife Center.

2. CAMPGAW MOUNTAIN COUNTY RESERVATION

Campgaw Road, Mahwah

This 1,351-acre wooded park has hiking trails (sketch map available from the ranger, the Wildlife Center, and Park Commission headquarters), campsites (some with tent platform or adirondack shelter), picnic facilities, and children's rustic play equipment. The visitors' center, a ski shelter in winter, is utilized for nature education in other seasons.

SKI CENTER: Machine-made snow is sprayed on the 1,500-foot main slope, with two chair lifts (one has mid-station), and the 600-foot school slope, with T-bar lift. The 800-foot school slope, with rope tow, and the two side trails, about 2,000 feet long, depend on natural snow. The visitors' center has a wood fire in the lounge, a snack bar, and a shop which rents and sells skiing equipment. Expert instruction is available.

NATURE EDUCATION: Public nature walks and programs are scheduled. (Information at Wildlife Center.) Courses are offered in summer. Special programs are arranged for groups.

HANG GLIDING: After ski season the slopes can be used by permit holders for hang gliding. (Special insurance is required.)

3. SADDLE RIDGE HORSEBACK RIDING AREA

Shadow Ridge Road, Franklin Lakes
(Off Pulis Avenue)

Instruction is available, by appointment, and experienced riders may rent horses for guided trail riding and for riding in the paddocks. Horse owners may pay an annual fee for use of paddocks and wooded trail. In winter call to be sure we're open.

4. DARLINGTON COUNTY PARK

Darlington Avenue, Mahwah

There is swimming in two of the three lakes

on this rolling site in foothills of the Ramapo Mountains. The third lake affords fishing. There is an entrance fee during the swimming season, Memorial Day weekend - Labor Day. The park has sand beaches, picnic groves, a fieldhouse with snack bar and open terraces, pavilions, children's playground, and courts for tennis, handball, basketball and horseshoe pitching.

The park is closed December 1 - March 31. In June call the Park Commission re the weekday schedule.

5. DARLINGTON BERGEN COUNTY GOLF COURSE

Campgaw Road, Mahwah

This 18-hole course is under construction.

6. BERGEN COUNTY PARK COMMISSION WILDLIFE CENTER

Crescent Avenue, Wyckoff

Visitors can see and learn about wildlife of this area's natural habitat. The exhibit hall, which overlooks the waterfowl pond, has a meeting room and a browsing library. Naturalists are in attendance.

Outside there are shelters for live animals and birds and a 3/4-mile nature walk. A printed trail guide is available from the naturalist.

The center offers public programs and classes and also schedules special programs for school groups and for organizations.

A printed schedule of free public weekend and Tuesday programs is available on request.

There are picnic tables on the hill. A shaded terrace garden featuring rhododendron is being developed beside the park drive. There are 25,000 daffodil bulbs on the hillside.

7. WOOD DALE COUNTY PARK

Prospect Avenue, Woodcliff Lake

The pond is the main attraction. In winter it is a popular ice skating area. In other seasons it affords fishing, duck feeding and model-boat sailing.

The park has free tennis courts with light picnic facilities, and a children's playground.

8. BAYLOR MASSACRE BURIAL SITE

Red Oak Drive, River Vale
(Off River Vale Road)

Visitors to this shaded wayside historical park may read markers telling of the Sep 28, 1778 Baylor Massacre and may see the millstone which long ago covered the burial place on this site. Victims whose remains were uncovered here in August, 1967 were members of a detail in Col. George Baylor Continental Army Cavalry regiment. Fifteen dragoons died of wounds inflicted in 2 A.M. British ambush.

9. ROCKLEIGH BERGEN COUNTY GOLF COURSE

Paris Avenue, Rockleigh

Lines form early at this 27-hole roll-in course at the base of the Palisades' western slope.

The stone fieldhouse has a snack bar and pro shop. Golf cars and carts are available for rental.

10. PASCACK BROOK COUNTY PARK

Emerson Road, Westwood

A picnic grove overlooks the fishing pond. The park has three free tennis courts with lights, a practice backstop, a children's playground, and two ball fields.

11. SADDLE RIVER COUNTY PARK

This linear park will eventually flank Saddle River for 5½ miles, and will have scenic drives and paths. The park has five recreation areas and additional facilities.

a. Wild Duck Pond Area

East Ridgewood Avenue Ridgewood

Ducks and geese abound on the pond, which is a popular center for ice skating and fishing as well as for duck feeding. The park area has extensive picnic facilities, a large children's playground, and shuffleboard and horseshoe courts.

b. Glen Rock Area

Alan Avenue, just east of Prospect Street

Here too the pond is the focal point, affording duck feeding, fishing, and model boat sailing. The area has picnic facilities, free tennis courts, a children's playground, a bicycle path (see THE NORTH TRAIL below), and a rink which is flooded in winter for ice skating.

c. Dunkerhook Area

Dunkerhook Road, Paramus

The cool shade of wooded picnic areas is especially welcome on a hot day. Ducks in the area's winding stream look for handouts from park visitors. The area has a children's playground, horseshoe courts, and bicycle-pedestrian trail access to free tennis courts across the Saddle River—in Fair Lawn—and to the Glen Rock Area. (See THE NORTH TRAIL below.)

d. Otto C. Pehle Area

Saddle River Road, Saddle Brook

Picnic groves and a fishing lake are the most popular attractions. Model sailboat regattas may sometimes be seen on the lake. Duck feeding is popular here. A bicycle-pedestrian path circles the lake and continues southward beside the Saddle River. (See THE SOUTH TRAIL below.) The area has a children's playground and facilities for baseball, football, soccer, ice skating, and horseshoe pitching.

e. Rochelle Park Area

Railroad Avenue

There are picnic tables along the 1-mile streamside park drive. Other facilities include free tennis courts, a bicycle path (see THE SOUTH TRAIL below), a children's playground, bocce courts, and a play rink which is flooded in winter for ice skating.

Tower Restoration, Arcola, Paramus

THE TOWER and paddle wheel, focal points of the famed Easton gardens, were reconstructed above the ruins of the original complex built circa 1900 near the site of the historic 1745 Red Mill. The reconstructed landmark may be seen from Saddle River Road south of Route 4. TWO BICYCLE-PEDESTRIAN trails, each 3 miles long, are in the park. One is north of Route 4, the other south of Route 4.

THE NORTH TRAIL starts at Williams and Union Streets, Fair Lawn, follows the stream, cuts through the Dunkerhook Area, and continues to the Glen Rock Area lakeside path. There is an access path to the trail from the intersection of Saddle River Road and Fair Lawn Avenue, Fair Lawn.

THE SOUTH TRAIL includes paths in the Otto C. Pehle Area in Saddle Brook and the Rochelle Park Area. They are linked by a bicycle-pedestrian bridge and by the Railroad Avenue bridge, which has a bicycle-pedestrian lane.

THREE TENNIS COURTS are in the Fair Lawn portion of the park. Play is free. Access is from the bicycle-pedestrian trail and from the parking area off Dunkerhook Road west of the Saddle River. FISHING is permitted along the Saddle River banks where accessible within the park.

12. ORCHARD HILLS BERGEN COUNTY GOLF COURSE

Paramus Road, Paramus

Mature trees and shrubs grace this nine-hole course on Bergen Community College property. The Park Commission renovated the course and is operating it under contract with the College. The course may be played twice per greens fee.

The golf house has food vending machines and a small pro shop.

13. VAN SAUN COUNTY PARK

Entrances on Forest and Continental Avenues, Paramus and Howland Avenue, River Edge

This is our most popular and most complete County park. The children's zoo and children's railroad are perhaps the best known features. The train tracks form a loop around the zoo, a walk-through aviary, and an 1860s farmyard scene.

A 12-court tennis center, a 6-acre lake which affords fishing and ice skating, picnic groves, two large children's playgrounds, and a shaded garden around historic Washington Spring are among other features of the park. Park facilities include a pony ring, a snack shop, a bicycle-pedestrian path, shuffleboard and horseshoe courts, sledding slopes, ball fields, and an open play area.

Free tennis clinics are conducted in summer for registered residents aged 8-17.

14. OVERPECK COUNTY PARK

This 813-acre meadowland site is being developed gradually as Bergen County's central park with a variety of recreation facilities. Excavation of a 37-acre lake north of Fort Lee Road has been completed, and a 120-acre lake is being excavated to the south. Plans call for picnic areas and landscaped paths around the lakes. Current facilities include:

a. Overpeck Bergen County Golf Course

East Cedar Lane, Teaneck

There are two ponds, two lagoons, and an 8-acre lake on this 18-hole course. The contemporary redwood golf house contains a lounge, snack bar, deck, and pro shop.

b. Leonia North Area

Fort Lee Road

This area has four free tennis courts with lights and practice backstop, football and baseball and soccer fields, an 8-lane running track, and facilities for field events. A 1¼-mile bicycle-pedestrian path forms a figure-8 beside the lake.

c. Leonia South Area

Fort Lee Road

AN all-weather HORSEBACK RIDING CENTER is the main attraction. It has an indoor riding arena, paddocks, and a fenced bridle trail segment. The trail will be extended as hydraulic fill settles. Group riding lessons are offered. Lessons and horse rental are by appointment. Unsupervised trail and paddock riding are open only to experienced riders. Horse owners may pay an annual fee for use of outdoor facilities and an hourly fee for use of the arena (subject to availability).

The park area has a wild west playground, picnic tables, and a rink which is flooded in winter for ice skating. A wildlife refuge adjoins the area.

d. Palisades Park Area

Roosevelt Street, off Grand Avenue

Sports facilities in this section are four free tennis courts, with lights and practice backstop, sodded baseball and football fields with bleachers, a softball field, horseshoe courts, a running track, and facilities for field events. There is a fieldhouse. The area has 40 picnic tables.

15. COUNTY PARKS IN GARFIELD

Dahnert's Lake

Midland Avenue

The pond is the center of activity. It affords ice skating, duck feeding, fishing, and model boat sailing.

The park has picnic facilities, a children's playground, and bocce courts.



SWIMMING lakes are at Darlington Park.

Belmont Hill Botany Street

A hilltop rose garden containing more than 55 rose varieties attracts many visitors in June and early fall. The park also has a scenic lookout, children's play equipment, and picnic tables.

16. WALLINGTON COUNTY PARK

Rose Street, Off Paterson Avenue Wallington

The pond is used for ice skating, fishing, and model boat sailing. There are free tennis courts and sledding slopes in the park. Other facilities are ball fields, picnic tables, and a children's playground.

17. RIVERSIDE COUNTY PARK

Both the North and South Areas of this southwest Bergen park are on the Passaic River.

a. North Area

Riverside Avenue, Lyndhurst

Recreation facilities include free tennis courts with lights, shuffleboard and horseshoe and bocce courts, picnic groves, a children's playground, ball fields, and a 7/10-mile bicycle-pedestrian path. Breslin Field has lights and a fieldhouse. There is a play rink which is flooded in winter for ice skating.

b. South Area

River Road, North Arlington

The children's railroad, which operates on Sundays and holidays April-October, and a wild west playground are the youngsters' favorite features here. The park area also has three free tennis courts with practice backstop and lights, picnic facilities, ball fields, horseshoe courts, and a play rink divided into 4 sections—3 for tennis and 1 for basketball.



Bergen County Park Commission Annual Report, 1977
