



Bergen County Park Commission

Annual Report, 1976



CANDLE DIPPING was one of the colonial heritage projects in the Park Commission's Bicentennial observance.

STORY HOURS under the trees took place on six Saturday mornings at Van Saun Park.

The Record Photo



BERGEN COUNTY PARK COMMISSION, 1976 Hackensack, New Jersey

Otto C. Pehle, President

Peter W. Occhipinti, Vice President	George Warchol
Joseph A. Carucci, Secretary	Henry G. Avery
Wilbur J. Lotz, Assistant Secretary	Abraham Solomon*
Lawrence E. Nyland	D. Richard Sanfilippo

James A. McFaul, Executive Director

Max A. Hasse, Jr., Staff Director

Robert E. Hamer, Assistant County Counsel

* Deceased December 26, 1976

BOARD OF CHOSEN FREEHOLDERS, 1976

Jeremiah F. O'Connor, Director

Doris Mahalick, Deputy Director	Henry L. Hoebel, Chairman, Park and Recreation Committee
Gerald A. Calabrese	Joan Lesemann
Myra R. Elliott	D. Bennett Mazur
Francis X. Herbert	Charles E. Reid

Stephen J. Cuccio, County Administrator

Vincent P. Rigolosi, County Counsel

COVER PICTURE: Daffodils are a popular attraction at the Bergen County Park Commission Wildlife Center. There are 25,000 daffodil bulbs planted on the hillside facing the exhibit building.

MUSIC FILLED the park at concert time. Eight performing arts programs were presented by the Park Commission in cooperation with the North Jersey Cultural Council.

The Record Photo



We Aim To Please

Diversity of facilities in the Bergen County park system is pointed up by projects completed in 1976, among them tennis courts, a bicycle path, a garden terrace, a baseball field, a golf house, a nature education room, soccer playing areas, a pony barn, and track and field facilities.

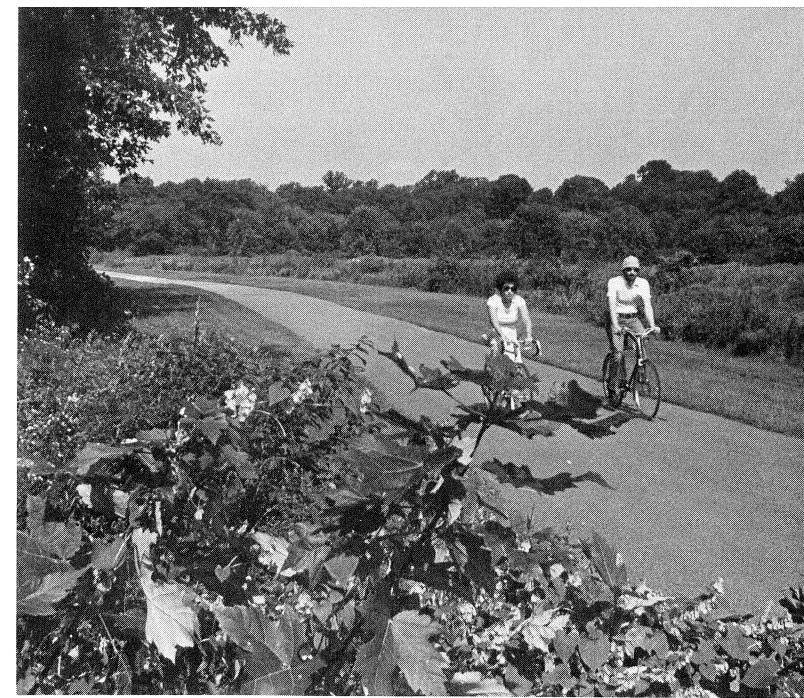
The Bergen County Park Commission and Board of Freeholders seek to provide all residents with opportunity for enjoyment. We welcome suggestions and are often able to comply with requests.

It is good to see families spending a pleasant day at a park — with Grandma and Grandpa as happy as the little ones.

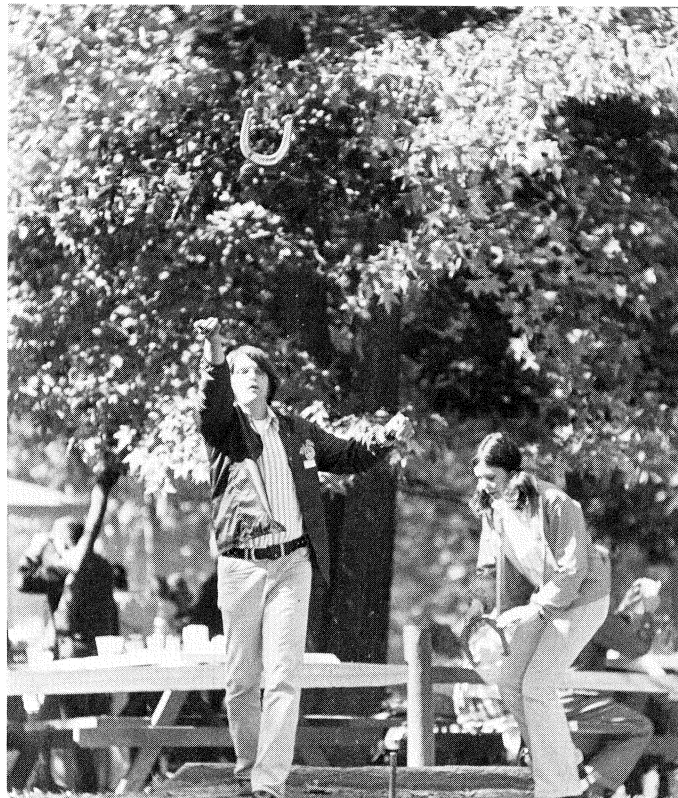
The county is able to provide facilities not usually feasible for municipal parks, facilities such as golf courses, a ski center, a wildlife center, hiking and bicycle trails, a three-lake park with swimming and boating, a children's zoo, children's railroads and pony rides, and horse-back riding areas.

Wholesome outdoor recreation is important to the well-being of all, and we shall continue efforts to provide Bergen residents with the outdoor recreation facilities they want and need.

Otto C. Pehle
Bergen County Park Commission President



PEDALING along the 3-mile north trail in Saddle River County Park is a pleasant way to keep fit.



FAR LEFT: Shuffleboard courts at four county parks are enjoyed by all ages.

LEFT: Horseshoe pitching is a popular pastime at eight county park areas.

A Variety of Projects For Your Enjoyment

Seven color-coated tennis courts, a baseball field with sodded infield and bleachers, a park field house, track and field facilities, a garden terrace, a bicycle path, a golf house, soccer playing areas, and a pony barn are among Bergen County Park Commission projects completed in 1976.

Four tennis courts and a practice backstop were opened to the public in the Leonia North Area of Overpeck County Park, and work was started on installation of lighting for the courts. Three courts were opened in the Fair Lawn portion of Saddle River County Park—accessible via bicycle-pedestrian bridge from the park's Dunkerhook Area and by car from Dunkerhook Road west of the Saddle River.

ATHLETIC COMPLEX COMPLETED

The new baseball field and the new park field house are in Overpeck County Park's Leonia North Area. The field house contains rest rooms and the office for the park area as well as locker rooms for the teams playing on the athletic fields. The Area has a football field, a bicycle path, and a soccer playing area in addition to the new baseball and tennis facilities.

SOCCER playing fields were made available at Overpeck and Saddle River County Parks.



A bluestone running track and facilities for field events were completed at Overpeck Park's Palisades Park Area in 1976. There are six lanes on the 24-foot-wide quarter-mile track around the football field. Pole vault and high jump areas and broad jump approaches are paved with asphalt. (The broad jump has a sand and clay pit.) Discus and shot-put pads are paved with concrete. The new track and field facilities are suitable for two-team and three-team meets. Rock and gravel fill beneath the track had been allowed to settle for a year before the surface was applied.

A TERRACE FOR THE GARDEN

Work was completed on the slate terrace in the woodland garden being developed gradually beside the park drive at the Bergen County Park Commission Wildlife Center. The terrace, 60 by 20 feet, is built into the hillside and has a limestone retaining wall.

Slate for the terrace and terrace steps was salvaged from Central Avenue, Hackensack when the walk and curbs were being replaced. The sun dial base was obtained from the old bridge abutment on Dunkerhook Road, and the dial



THE GARDEN terrace at the Wildlife Center was constructed of salvaged materials, free for the fetching.

The Record Photo

was donated. Limestone chunks for the retaining wall and a large number of ferns were salvaged from a construction site in Vernon Township. Salvaged railroad ties border the 800-foot path winding through the garden.

BICYCLE PATHS FLANK STREAM

A bicycle-pedestrian path was built in Saddle River County Park's Rochelle Park Area, and a 145-foot bridge was built across the Saddle River to link the new path with the newly extended bicycle-pedestrian trail in the Otto C. Pehle Area in Saddle Brook. Work was started on the bridge approaches. The bridge will be utilized by emergency and service vehicles as well as bicycles and pedestrians, making for increased safety and efficiency.

The golf house completed in 1976 is on the site of 18-hole Darlington Bergen County Golf Course. The maintenance building for the course was also completed. (Construction of the course resumed in November. Work had been halted by contractor default and subsequent litigation.)

A REDWOOD GOLF HOUSE

Designed to meet the need as economically as possible, the golf house has prefinished window panels overlooking the course. Exterior walls are of redwood battens and rough-grain redwood plywood above painted decorative cement blocks.

Facilities in the building include a lounge, pro shop, snack bar, ticket room, office, locker and shower rooms, and storage space—all on the first floor. The manager's apartment is on the second floor.

There is a soccer playing area in the Fair Lawn portion of Saddle River County Park as well as the soccer area in Overpeck Park's Leonia North Area. The facilities were provided in response to requests and to the game's increasing popularity in this country.

PONY BARN CONSTRUCTED

Van Saun County Park riding ponies are housed in the barn constructed in 1976. The old

stable was razed because it was no longer adequate.

At year end work was nearing completion on renovation of two playgrounds to prepare them for safe enjoyment by handicapped children as well as children without handicaps. The Van Saun Park playground nearest the zoo and the playground in Riverside Park's North Area are being supplied with specially designed slides, sand boxes, balance beams, tunnels, and other fun facilities. There will be restroom modifications and specially built picnic tables. New asphalt paths will make for smoother wheelchair travel.

At Rockleigh Bergen County Golf Course three bridges spanning a creek were replaced and some 600 feet of fencing were installed.

NEW SWIMMING PLATFORMS

A fire-damaged hay and grain building at Overpeck Riding Center was restored.

Three reinforced concrete swimming platforms were installed in Darlington County Park's swimming lakes, replacing the old floating wooden rafts.

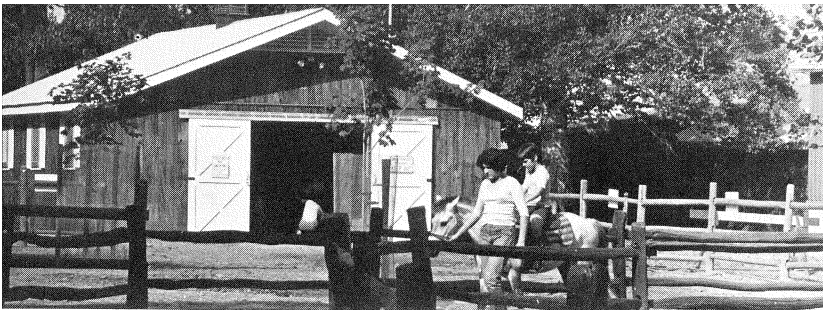
Lighting was installed at Wood Dale County Park's tennis courts.

The Park Commission, with the cooperation of the Board of Freeholders, began efforts to acquire approximately 726 acres of property to be annexed to Ramapo Valley County Reservation.

The nation's Bicentennial was marked with a commemorative planting of 200 trees, chiefly weeping willows and poplars, in the Leonia South Area of Overpeck Park.

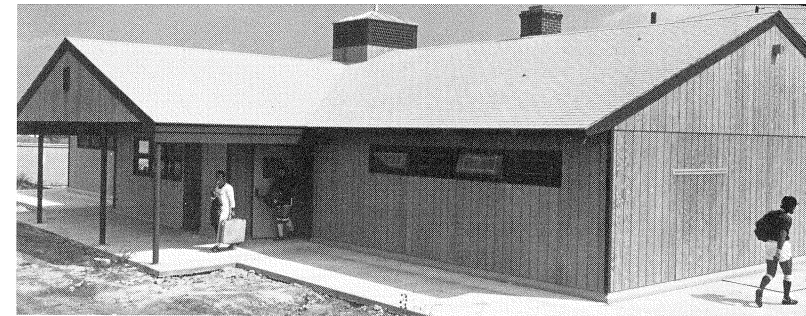
BICENTENNIAL OBSERVED

A 20-foot by 10-foot Colonial herb garden was planted at the Wildlife Center, just north of the exhibition hall, and Colonial and Indian skills were revived in Wildlife Center Bicentennial programs. Participants in the Colonial heri-



A BARN to house the ponies at Van Saun Park was built near the pony-ride ring.

THE FIELDHOUSE at Overpeck Park's Leonia North Area contains park rest rooms and locker rooms.



tage program spun and dyed wool, made butter, and dipped candles.

Indian-heritage program participants ground corn with log and stone mortar and pestle, scraped and pounded a deerskin, and searched for useful plants or wove on Indian looms.

There were adult seminars on natural plant dyeing and winter birding.

Special nature programs were presented for 865 groups, chiefly school classes, in 1976. The programs were offered at Campgaw Mountain and Ramapo Valley County Reservations as well as at the Wildlife Center.

NATURE EDUCATION POPULAR

There were free public programs on weekends and Tuesdays in all seasons. Their popularity has increased steadily. Also popular were the guided hikes in Campgaw and Ramapo Reservations.

A nature education room was provided in the Ramapo Reservation headquarters building. The room was refurbished and furnished.

Summer nature workshops were conducted at the Wildlife Center and Campgaw Reservation.

Eighty-three organizations held open meetings at the Wildlife Center, extending the education programs available to the public.

PROGRAMS IN THE PARKS

Eight performing arts programs were presented in the parks during the summer by the Bergen County Park Commission in cooperation with the North Jersey Cultural Council. Performances included concerts by a rhythm and brass quintet, country western and blue grass music programs, concerts with the big-band sound of the 1930s and 1940s (partially financed by a special fund of the musicians' union), a humorous musical comedy about incidents in New Jersey history, and a barbershop singing program.

There were six outdoor story hours in Van Saun Park, with professional story tellers.

The Park Commission's twelfth annual outdoor art show, at Van Saun Park, had on display the work of 175 amateur and professional artists.

2,310 AT TENNIS CLINICS

Free tennis clinics at Van Saun Park had an enrollment of 2,310. The instruction was offered during summer vacation for Bergen residents aged 8-17. Park Commission registration was a requisite.

The Park Commission tennis tournament at Van Saun Park had 1,015 entrants.

Horse shows were popular at both riding areas.

Hang gliding made its debut here in 1976. The Campgaw Ski Center slopes were utilized in off season. Permit holders glided down beside the slopes to the delight of spectators. Hang gliding could be seen on Sundays when the wind was from the East.

PARK REVENUE IS UP

The County Treasury received \$1,528,953 in 1976 from county park fees. This represents a gain of \$209,050 over the total for 1975. In 1976, as in other years, Rockleigh Golf Course had the highest yield: \$344,128. Revenue totaled \$244,523 at Darlington Park, which has an admission fee during the swimming season. Overpeck Bergen County Golf Course receipts totaled \$235,228. The figure for Orchard Hills Bergen County Golf Course was \$115,220. Overpeck Riding Center turned in \$140,015. Returns from Saddle Ridge Horseback Riding Area totaled \$79,570, from Campgaw Mountain Ski Center \$84,008.

Other totals: Registration and permit fees, \$133,868; Van Saun railroad, \$54,305; Van Saun tennis center, \$25,010; Van Saun pony ring, \$13,663; Riverside Park South railroad, \$8,857; miscellaneous revenues, \$50,557.

A RECORD SKIING WEEK

Thanks to early cold weather, Campgaw

Mountain Ski Center opened December 26, in time for school vacation, and had record receipts for the week.

Among 1976 park projects were: completion of a segment of bridle trail at Overpeck Riding Center and completion of the horse stalls and the interior painting at the center, construction of a sanitary sewer and a 1,000-foot water line for Darlington Golf Course, installation of fire and burglar alarm systems and dry chemical fire-extinguishing systems, and construction of new facilities for live creatures at the Van Saun zoo and Wildlife Center.

Major purchases included a front-end loader and a fully equipped Caterpillar, at a total cost of \$47,000, and free-standing electronic cash registers, at a total cost of \$12,600.

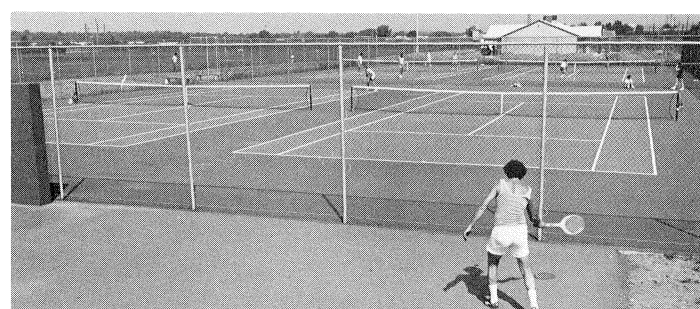
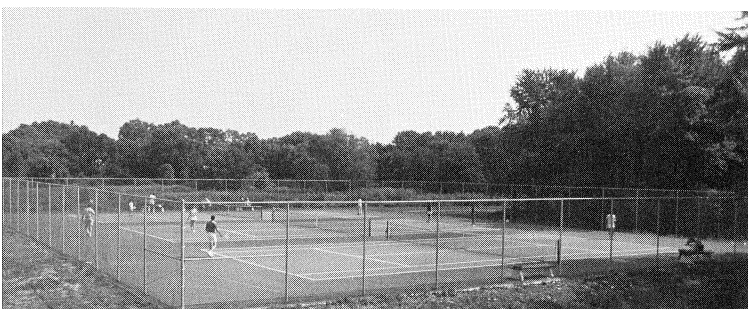
CHORES ARE NEVER-ENDING

Park Commission crews were kept busy with repairing, cleanup, painting, planting, seeding, mowing, filling, grading, draining, installation of utilities and equipment, snow clearing, and a long list of other chores necessary to the maintenance of a park network.

The Park Commission renamed the Saddle Brook Area of Saddle River County Park as the Otto C. Pehle Area in recognition of Commissioner Pehle's service on behalf of the county park system. He served his sixth term as Commission President in 1976. On December 20 he completed 15 years of continuous service on the Commission.

The fenced baseball field in Riverside Park's North Area was named Breslin Field in recognition of the Breslin family's contribution through the years to the youth of the community.

SEVEN TENNIS COURTS were opened to the public. At far left are the three courts in Saddle River County Park's Fair Lawn section. At left are the four courts and practice backstop in Overpeck Park's Leonia North Area.





THE AVIARY at Van Saun Park is in the children's zoo area.

The Record Photo

DUCKS greet visitors at nine county park areas. These are at Saddle River County Park's Dunkerhook Area.



A Joy To Behold

MODEL SAILBOAT regattas may often be seen, usually on Sundays, at Saddle River County Park's Otto C. Pehle Area in Saddle Brook.

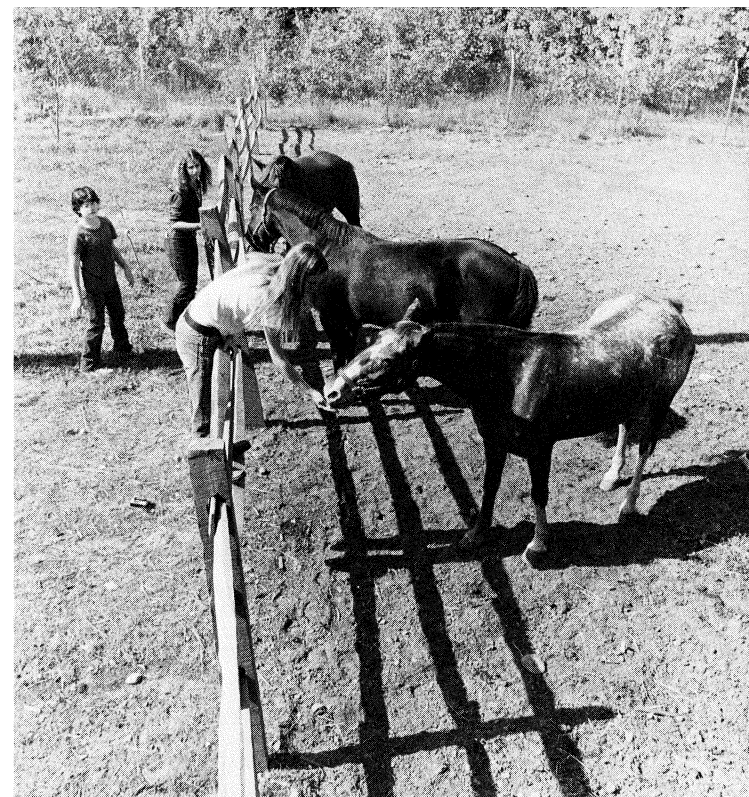


GOLF COURSES' broad green vistas enrich the community. Shown is the Rockleigh Bergen County Course.





THE MOUNTAIN lake at Ramapo Valley Reservation is accessible by hiking trail. The view and the fishing are worth the walk.



THE WAYSIDE wooded park at a Baylor Massacre burial site is a peaceful memorial to men who gave their lives for our freedom.

HORSES may be admired at Saddle Ridge riding area, shown here, and at the Overpeck Riding Center.



THE WOODLAND GARDEN at the Bergen County Wildlife Center has pleasant paths and patio. It erupts in color in the spring.





A SKIER descends the main slope at popular Campgaw Mountain Ski Center.

COUNTY PARK ACREAGE

BERGEN COUNTY PARK COMMISSION

PARK	MUNICIPALITY	ACREAGE
Darlington County Park	Mahwah & Ramsey 231.11 83.13	314.24
Campgaw Mt. County Reservation	Mahwah, Oakland & Franklin Lakes 1056.42 189.12 105.56	1351.10
Bergen County Wildlife Center	Wyckoff	81.34
Wood Dale County Park	Woodcliff Lk., Hillsdale & Park Ridge 55.01 52.72 9.82	117.55
Rockleigh Bergen County Golf Course	Rockleigh, Norwood & Northvale 164.12 90.07 9.93	264.12
Pascack Brook County Park		
a) Pascack Brook Area	Westwood, River Vale 117.71 19.63	
b) Overbrook Minipark	Westwood 2.79	140.13
The Baylor Massacre County Park	River Vale	2.00
Saddle River County Park		
a) Wild Duck Pond Area	Ridgewood 81.76	
b) Glen Rock Area	Glen Rock 64.31	
c) Dunkerhook Area	Paramus 171.60	
d) Saddle Brook Area	Saddle Brook 79.87	
e) Rochelle Park Area	Rochelle Park 84.12	
f) Fair Lawn Area	Fair Lawn 93.81	575.47
Van Saun County Park	Paramus & River Edge 53.32 86.40	139.72
County Parks in Garfield	Dahnert's Lake & Belmont Hill 9.53 9	18.53
Overpeck County Park	Englewood, Leonia, Teaneck, Ridgefield 7.71 168.31 471.93 1.31	
	Ridgefield Park & Palisades Park 99.26 63.60	812.12
Undeveloped County Park Area	River Edge (Hackensack River)	.08
Wallington County Park	Wallington	22.99
Riverside County Park		
a) North Area	Lyndhurst - 76.46	
b) South Area	North Arlington - 32.06	108.52
Undeveloped County Park Area	Alpine	190.55
Ramapo Valley County Reservation	Mahwah	714.21
		4,852.67

REPORT OF PARTICIPATING FUNDS RECEIVED FROM ASSISTANCE PROGRAMS LAND ACQUISITION

December 31st, 1976

Date	Project	Town	Acreage			
1) 12/13/62	Land for 9-hole addition to Rockleigh Golf Course	Norwood	86.80	\$ 260,000.00	State Green Acres	\$ 130,000.00
2) 3/18/63	Open space reserve	Alpine	93.10	400,000.00	State Green Acres	200,000.00
3) 4/26/63	Wildlife Center site	Wyckoff	81.35	400,000.00	State Green Acres	200,000.00
4) 1/15/64	Open space reserve	Alpine	97.45	310,000.00	State Green Acres	155,000.00
5) 2/ 9/65	Additional Saddle River Park property	Paramus	3.63	50,250.00	State Green Acres	25,125.00
6) 3/17/65)	Darlington Park site	Mahwah, Ramsey	178.26	1,150,000.00	State Green Acres \$575,000.00	
8/ 2/65)	Darlington Park site	" "	—	(HUD)	U.S. Housing & Home Fin. 764,068.00 Agcy. \$189,068.00	
7) 6/15/67)	Addition to Camp- gaw Reservation	Mahwah	59.75	137,418.00	State Green Acres \$ 68,709.00	
6/ 9/69)	Addition to Camp- gaw Reservation	"	—		U.S. "HUD" 137,418.00 \$ 68,709.00	
8) 10/ 2/72)	Ramapo Valley Reservation site	Mahwah	624.21	1,560,527.50	State Green Acres \$780,263.00	
3/12/73)	Ramapo Valley Reservation site	"	—		U.S. "BOR" 1,560,526.75 \$780,263.75	
9) 1/11/68	Overpeck Park tidal lands	Teaneck, Leonia, * Englewood, Pal. Pk., Ridgefield Park	399.29	400,000.00	State Green Acres	200,000.00
			1,623.84	\$4,668,195.50		\$3,372,137.75

IMPROVEMENTS

10) 6/27/68	Improvements at Wildlife Center	Wyckoff	(81.35)	\$ 297,136.18	U.S. "BOR" \$ 148,568.09
				\$4,965,331.68	**\$3,520,705.84

Prepared by R. M. Hirsh: rp

* While the County of Bergen was the owner in fee of these lands, the State of New Jersey, through extensive negotiations with the County, established its claim that this property (399.29 acres of a total of 813.43 acres in the Overpeck Area) was tidal land and as such was the property of the State. After receiving in payment from the County a fee of \$1,000.00 an acre — totalling \$400,000, the State granted the County a Riparian Grant. Subsequently the State, through the Green Acres Assistance Program, reimbursed the County half the cost (\$200,000) of this Riparian Grant.

** It is interesting to note that the County, through the Bergen County Park Commission, has received from the various State and Government Agencies, 71% of the total cost of the above 10 projects.

SUMMARY

Total contributed by State Green Acres Assistance Program	\$2,334,097.00
Total contributed by U.S. Government Agencies	1,186,608.84
	<u>\$3,520,705.84</u>

**CONDENSED STATEMENT OF PROPERTIES
COMMITTED OR ACQUIRED FOR PARK PURPOSES
COMBINED BOND, BUDGET, AND OTHER CAPITAL FUNDS**

Close of December 31, 1976

AREA	SUB-TOTAL		TOTALS	
	Acreage	Cost	Acreage	Cost
OVERPECK CREEK				
Private properties purchased	99.48	\$458,874.00		
Municipal properties donated or committed	712.64			
State Tidal Lands purchased		400,000.00	812.12	\$858,874.00
PASSAIC RIVER				
Private properties purchased	49.86	121,320.00		
Private properties donated	0.07	1.00		
Municipal properties donated or committed	81.58		131.51	121,321.00
SADDLE RIVER				
Private properties purchased	499.07	619,005.00		
Private properties donated	10.01	1.00		
Municipal properties donated	66.39	3,000.00	575.47	622,006.00
SOUTHWEST BERGEN				
Private properties purchased		2,200.00		
Municipal properties donated	18.53	2.00	18.53	2,202.00
VAN SAUN				
Private properties purchased or committed	138.33	204,709.73		
Private properties donated	1.39		139.72	204,709.73
NORTHWEST BERGEN				
Private properties purchased	2,227.88	4,152,259.21		
Private properties donated	56.88			
Municipal properties donated	52.50			
Exchange of property with Public Utility	25.06			
County property dedicated for Park purposes	98.57		2,460.89	4,152,259.21
NORTHEAST BERGEN				
Private properties purchased	438.00	1,097,806.75		
Private properties donated	14.11			
Municipal properties donated	2.56		454.67	1,097,806.75
PASCACK BROOK				
Private properties purchased	24.67	53,221.88		
Municipal properties donated	117.46		142.13	53,221.88
PASCACK VALLEY				
Private properties purchased	109.98	232,869.00		
Private properties donated	0.88			
Municipal properties donated	6.69		117.55	232,869.00
HACKENSACK RIVER				
Private properties purchased			0.08	10.00
ALL AREAS				
Legals, Advertising, Engineering, etc. .				71,532.52
			4,852.67	\$7,416,812.09



SUN BATHERS stretch out on a sandy beach at Darlington County Park.

**BERGEN COUNTY PARK COMMISSION
LAND ACQUISITION
SUMMARY
SOURCE OF APPROPRIATIONS AND DISBURSEMENTS**

DESCRIPTION	Acreage	Disbursements	Appropriations
Park Commission Bond Funds (as adjusted)			\$ 5,354,200.08
Miscellaneous appropriation to Bond Account Re: Land Reclamation Corp. Prop. taxes			256.98
Park Commission Budget Funds			189,870.03
State of N. J. Green Acres Assistance Program (Joint Closing Account)			1,105,000.00
Capitol Funds Surplus, Re: Green Acres			170,000.00
Capital Funds Surplus (Budget)			15,932.00
Capital Funds Surplus, Re: Federal Open Space Land Program			189,068.00
Trust Account, County Parks, Re: State of N. J. Route No. 95, Overpeck above 2.92 El.			199,985.00
Trust Account, County Parks, Re: Green Acres, Overpeck, Tidal Lands			200,000.00
DISBURSEMENTS			
Private Properties Committed or Acquired			
Bond Account	3,516.10	\$6,766,417.46	
Budget Account	179.65	175,860.11	
Municipal Properties Committed or Acquired			
Bond Account	1,056.11	3,000.00	
Budget Account	100.81	2.00	
State Bureau of Navigation, Tidal Lands Acq.			
Trust Account		199,985.00	
Green Acres Account		200,000.00	
Budget Account		15.00	
Legals, Adv. Engineering, etc.			
Bond Account		55,639.60	
Budget Account		15,892.92	
Dec. 31, 1976 to Balance (Available Bond Funds on Hand)		7,416,812.09	7,426,812.09
	4,852.67	\$7,426,812.09	\$7,426,812.09

Prepared by J. Santimauro, Fin. Mgr.

Bergen County Park System

A SKIER des

17a
17b



1. RAMAPO VALLEY COUNTY RESERVATION

Ramapo Valley Road (Route 202), Mahwah
Hikers may explore the wooded hillside, with its mountain fishing pond and waterfall. Tent camping is permitted beside the Ramapo River and lower lake. Vehicles must be parked at the entrance. Canoe and raft owners have portage access to the Ramapo River. Sketch maps of the hiking trails are available from the ranger and the Wildlife Center.

2. CAMPGAW MOUNTAIN COUNTY RESERVATION

Campgaw Road, Mahwah
This 1,351-acre wooded park is the largest property in the County Park system. It has hiking trails (sketch map available from the ranger and the Wildlife Center), campsites (some with tent platform or adirondack shelter), picnic facilities, and children's rustic play equipment. The visitors' center, a ski shelter in winter, is utilized for nature education in other seasons.

SKI CENTER: Machine-made snow is sprayed on the 1,500-foot main slope, with two chair lifts (one has mid-station), and the 600-foot school slope, with T-bar lift. The 800-foot school slope, with rope tow, and the two side trails, about 2,000 feet long, depend on natural snow. The visitors' center has a wood fire in the lounge, a snack bar, and a shop which rents and sells skiing equipment. Expert instruction is available.

NATURE EDUCATION: Public nature walks and programs are scheduled. (Information at Wildlife Center.) Courses are offered in summer. Special programs are arranged for groups.

HANG GLIDING: After ski season the slopes are used for hang gliding on Sundays when the wind is from the East.

3. SADDLE RIDGE HORSEBACK RIDING AREA

Shadow Ridge Road, Franklin Lakes (Off Pulis Avenue)
Instruction is available, by appointment, and experienced riders may rent horses for guided trail riding and for riding in the paddocks. Horse owners may pay an annual fee for use of paddocks and wooded trail. In winter call to be sure we're open.

4. DARLINGTON COUNTY PARK

Darlington Avenue, Mahwah
There is swimming in two of the three lakes on this rolling site in foothills of the Ramapo

Mountains. The third lake affords fishing and rental boating. There is an entrance fee during the swimming season, Memorial Day weekend-Labor Day. The park has sand beaches, picnic groves, a fieldhouse with snack bar and open terraces, pavilions, children's playground, and courts for tennis, handball, and horseshoe pitching. The park is closed December 1 - March 31. In June it is closed Monday - Thursday.

5. DARLINGTON BERGEN COUNTY GOLF COURSE

Campgaw Road, Mahwah
This 18-hole course is under construction.

6. BERGEN COUNTY PARK COMMISSION WILDLIFE CENTER

Crescent Avenue, Wyckoff
Visitors can see and learn about wildlife of this area's natural habitat. The exhibit hall, which overlooks the waterfowl pond, has a meeting room and a browsing library. Naturalists are in attendance. Outside there are shelters for live animals and birds and a ½-mile nature walk. A printed trail guide is available from the naturalist.

The center offers public programs and classes and also schedules special programs for school groups and for organizations. Free public programs are presented on weekends January - mid-June and September - November, on Tuesdays at 2 P.M. January - November. A printed program schedule is available.

There are picnic tables on the hill. A shaded terrace garden featuring rhododendron is being developed beside the park drive. There are 25,000 daffodil bulbs on the hillside.

7. WOOD DALE COUNTY PARK

Prospect Avenue, Woodcliff Lake
The pond is the main attraction. In winter it is a popular ice skating area. In other seasons it affords fishing, duck feeding, and model-boat sailing. The park has free tennis courts with lights, picnic facilities, and a children's playground.

8. BAYLOR MASSACRE BURIAL SITE

Red Oak Drive, River Vale (Off River Vale Road)
Visitors to this shaded wayside historical park may read markers telling of the Sept. 28, 1778 Baylor Massacre and may see the millstone which long ago covered the burial place on this site. Victims whose remains were uncovered here in August, 1967 were members of a detail in Col. George Baylor's Continental Army Cavalry regiment. Fifteen dragons died of wounds inflicted in a 2 A.M. British ambush.

9. ROCKLEIGH BERGEN COUNTY GOLF COURSE

Paris Avenue, Rockleigh
Lines form early at this 27-hole rolling course at the base of the Palisades' western slope.

The stone fieldhouse has a snack bar and pro shop. Golf cars and carts are available for rental.

10. PASCACK BROOK COUNTY PARK

Emerson Road, Westwood

A picnic grove overlooks the fishing pond. The park has three free tennis courts with lights, a practice backstop, a children's playground, and two ball fields.

11. SADDLE RIVER COUNTY PARK

This linear park will eventually flank Saddle River for 5½ miles, and will have scenic drives and paths. The park has five recreation areas and additional facilities.

a. Wild Duck Pond Area

**East Ridgewood Avenue
Ridgewood**

Ducks and geese abound on the pond, which is a popular center for ice skating and fishing as well as for duck feeding. The park area has extensive picnic facilities, a large children's playground, and shuffleboard and horseshoe courts.

b. Glen Rock Area

Alan Avenue, just east of Prospect Street

Here too the pond is the focal point, affording duck feeding, fishing, and model boat sailing. The area has picnic facilities, a children's playground, free tennis courts, and a rink which is flooded in winter for ice skating. The lakeside path is the north end of the park's 3-mile bicycle-pedestrian trail.

c. Dunkerhook Area

Dunkerhook Road, Paramus

The cool shade of wooded picnic areas is especially welcome on a hot day.

Ducks in the area's winding stream look for handouts from park visitors. The area has a children's playground and horseshoe courts.

A 3-mile bicycle-pedestrian trail goes through the area, providing access to free tennis courts across the Saddle River—in Fair Lawn—and to the Glen Rock Area.

d. Otto C. Pehle Area

Saddle River Road, Saddle Brook

Picnic groves and a fishing lake are the most popular attractions. Model sailboat regattas may sometimes be seen on the lake. Duck feeding is popular here. A bicycle-pedestrian path circles the lake and continues southward beside the Saddle River. It will be linked by bridge with the Rochelle Park path.

The area has a children's playground and facilities for baseball, football, ice skating, and horseshoe pitching.

e. Rochelle Park Area

Railroad Avenue

There are picnic tables along the 1-mile streamside park drive. Other facilities are free tennis courts, a children's playground, and a play rink which is flooded in winter for ice skating.

The streamside bicycle-pedestrian path will be linked by bridge to the Otto C. Pehle Area.

Tower Restoration, Arcola, Paramus

THE TOWER and paddle wheel, focal points of the famed Easton gardens, were reconstructed above the ruins of the original complex built circa 1900 near the site of the historical 1745 Red Mill. The reconstructed landmark may be seen from Saddle River Road south of Route 4.

A BICYCLE-PEDESTRIAN trail about 3 miles long starts at Williams and Union Streets, Fair Lawn, follows the stream, cuts through Dunkerhook Area and continues to the Glen Rock Area. There is an access path to the trail from the intersection of Saddle River Road and Fair Lawn Avenue, Fair Lawn.

THREE TENNIS COURTS are in the Fair Lawn portion of the park. Play is free. Access is from the bicycle-pedestrian trail and from the parking area off Dunkerhook Road west of the Saddle River.

A SOCCER playing area is in the park's Fair Lawn section, off Saddle River Road, behind Kind's Dairy.

FISHING is permitted along the Saddle River banks where accessible within the park.

12. ORCHARD HILLS BERGEN COUNTY

GOLF COURSE

Paramus Road, Paramus

Mature trees and shrubs grace this nine-hole course on Bergen Community College property. The Park Commission renovated the course and is operating it under contract with the College.

The course may be played twice per greens fee.

The golf house has food vending machines and a small pro shop.

13. VAN SAUN COUNTY PARK

Entrances on Forest and Continental Avenues, Paramus and Howland Avenue, River Edge

This is our most popular and most complete County park. The children's zoo and children's railroad are perhaps the best known features. The train tracks form a loop around the zoo, a walk-through aviary, and an 1860s farmyard scene.

A 12-court tennis center, a 6-acre lake which affords fishing and ice skating, picnic groves, two large children's playgrounds, and a shaded garden around historic Washington Spring are among other features of the park. Park facilities include a pony ring, a snack shop, a bicycle path, shuffleboard and horseshoe courts, sledding slopes, ball fields, and an open play area.

Free tennis clinics are conducted in summer for registered residents aged 8-17.

The Park Commission sponsors an outdoor art show here annually, in late summer.

Entry forms may be obtained from the Commission office.

14. OVERPECK COUNTY PARK

This 813-acre meadowland site is being developed gradually as Bergen County's central park with a variety of recreation facilities. Excavation of a 37-acre lake north of Fort Lee Road has been completed, and a 120-acre lake is being excavated to the south. Plans call for picnic areas and landscaped paths around the lakes.

Current facilities include:

a. Overpeck Bergen County Golf Course East Cedar Lane, Teaneck

There are two ponds, two lagoons, and an 8-acre lake on this 18-hole course. The contemporary redwood golf house contains a lounge, snack bar, deck, and pro shop.

b. Leonia North Area

Fort Lee Road

Four free tennis courts, a 1¼-mile figure-8 bicycle path, football and baseball fields, and a soccer playing area are the sports facilities here. There is a practice backstop with tennis courts for which lighting will be installed. The area has a fieldhouse.

c. Leonia South Area

Fort Lee Road

An all-weather HORSEBACK RIDING CENTER is the main attraction. It has an indoor riding arena, paddocks, and a fenced bridle trail segment. The trail will be extended as hydraulic fill settles. Group riding lessons are offered. Lessons and horse rental are by appointment. Guided trail riding (at 3 and 4 P.M. week-ends) and unsupervised riding are open only to experienced riders. Horse owners may pay an annual fee for use of outdoor facilities and an hourly fee for use of the arena (subject to availability). The park area has picnic tables and a rink which is flooded in winter for ice skating. A wild west playground will be added. A wildlife refuge adjoins the area.

d. Palisades Park Area

Roosevelt Street, off Grand Avenue

Sports facilities in this section are four free tennis courts, with lights and practice backstop, sodded baseball and football fields with bleachers, a softball field, a running track, and facilities for field events. There is a fieldhouse. The area has 40 picnic tables.

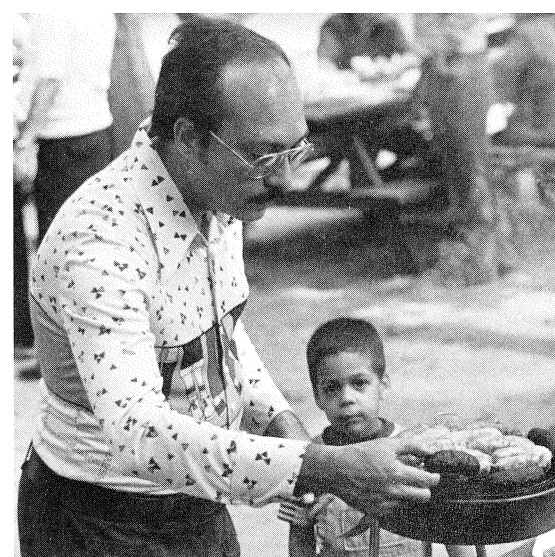
15. COUNTY PARKS IN GARFIELD

Dahner's Lake

Midland Avenue

The pond is the center of activity. It affords ice skating, duck feeding, fishing, and model boat sailing.

The park has picnic facilities and a children's playground.



PICNICKING is the favorite park activity.

Belmont Hill Botany Street

A hilltop rose garden containing more than 55 rose varieties attracts many visitors in June and early fall. The park also has a scenic lookout, children's play equipment, and picnic tables.

16. WALLINGTON COUNTY PARK

**Rose Street, Off Paterson Avenue
Wallington**

The pond is used for ice skating, fishing, and model boat sailing. Sledding slopes make this an all-season park. It has baseball, football and picnicking facilities, free tennis courts, and a children's playground.

17. RIVERSIDE COUNTY PARK

Both the North and South Areas of this southwest Bergen park are on the Passaic River.

a. North Area

Riverside Avenue, Lyndhurst

Picnicking is popular here. Free tennis courts with lights, horseshoe courts, and a children's playground are among the area's facilities. One of the ball fields has lights and a fieldhouse. There is a play rink which is flooded in winter for ice skating.

b. South Area

River Road, North Arlington

The children's railroad, which operates on Sundays and holidays April-October, and a wild west playground are the youngsters' favorite features here. The park area also has three free tennis courts with practice backstop and lights, picnic facilities, ball fields, horseshoe courts, and a play rink divided into four sections — three for tennis and one for basketball.



Bergen County Park Commission Annual Report, 1976
