



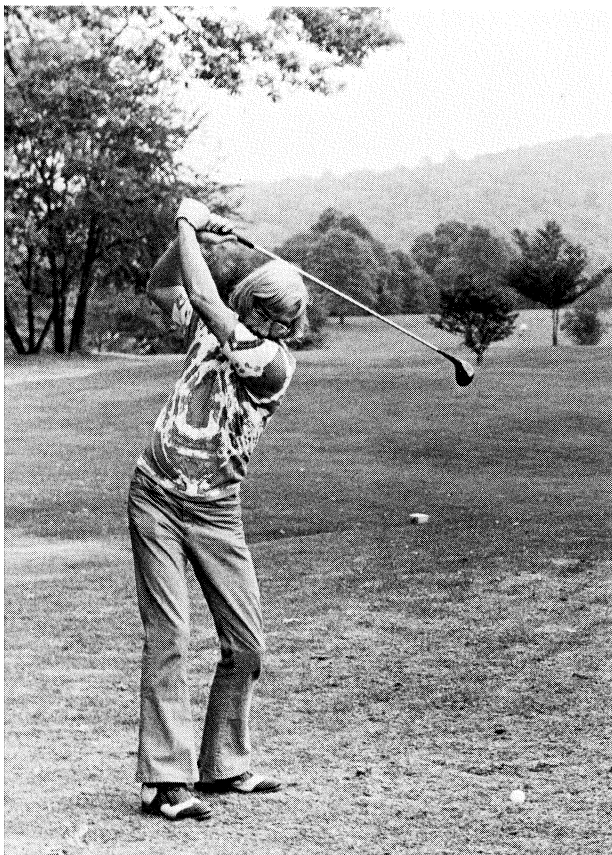
Bergen County Park Commission

Annual Report, 1975



THE TRAIN rounds the bend. There are children's railroads in two county parks.

A GOLFER enjoys a round at the popular Rockleigh Bergen County Golf Course.



COVER PICTURE: Pedaling along the 3-mile bicycle trail in Saddle River County Park is a pleasant way to promote fitness. The trail goes through the park's Glen Rock and Dunkerhook Areas and ends at Williams and Union Streets, Fair Lawn.

(Cover photo and most others by Kent Fulcher.)

BERGEN COUNTY PARK COMMISSION, 1975 Hackensack, New Jersey

Otto C. Pehle, President

Peter W. Occhipinti, Vice President

Roy Woodward, Secretary

Joseph A. Carucci, Assistant Secretary

Lawrence E. Nyland

George Warchol

Wilbur J. Lotz

Henry G. Avery

Abraham Solomon

James A. McFaul, Executive Director

Max A. Hasse, Jr., Staff Director

Robert B. Lichtenstein, Assistant County Counsel

BOARD OF CHOSEN FREEHOLDERS, 1975

Jeremiah F. O'Connor, Director

Francis X. Herbert, Deputy Director

Gerald A. Calabrese

Myra R. Elliott

Henry L. Hoebel, Chairman, Park and

Doris Mahalick

D. Bennett Mazur

Harry Randall

Victor M. Williams

Recreation Committee

Stephen J. Cuccio, County Administrator

Vincent P. Rigolosi, County Counsel



PEDAL BOATS and row boats may be rented at Darlington County Park's fishing lake.

Recession Points Up The Need For County Parks

Our county parks proved their worth in 1975 as never before. They were a godsend to residents hit by the recession, hurt by inflation, and limited by soaring gasoline prices.

There are many things you can do in Bergen's county parks without spending money: play tennis, walk through the children's zoo and 1860s' farm scene, visit the Wildlife Center with its exhibit hall and live animal shelters, attend a nature program, take a guided hike, explore hiking trails on your own, ride on a bicycle trail, fish in a pond, picnic under a tree, swing and slide on playground equipment, visit a historic spring and a Revolutionary War burial site, stroll through a rose garden and a rhododendron garden, skate on the ponds and flooded play courts, go sledding, play shuffleboard, pitch horseshoes, shoot baskets, ride the Ramapo River current on a raft, feed ducks, and sail model boats.

When we must charge, we charge as little as possible. A child can ride on a train for 15 cents and on a pony for 25 cents. A Bergen senior citizen or registered minor pays 50 cents to spend a summer weekday enjoying Darlington Park's swimming and fishing lakes, picnic groves, and games courts, and the cost is \$1 for a Commission-registered adult under 65.

A registered Bergen adult pays \$2 and a registered minor \$1 to ski for a weekday afternoon or evening on Campgaw Mountain. With Commission registration, the weekday greens fee is \$3 for 18 holes of golf—\$1.50 for a Bergen resident over 65.

County-sponsored buses go to Van Saun and Darlington Parks during the summer, making stops in 63 Bergen towns en route, and the Cross-County bus goes to entrances at Van Saun and the Wildlife Center year round.

The Board of Freeholders and Park Commission would like every Bergen resident, whatever his means, to be able to derive pleasure from the county parks.

Otto C. Pehle
Bergen County Park Commission President



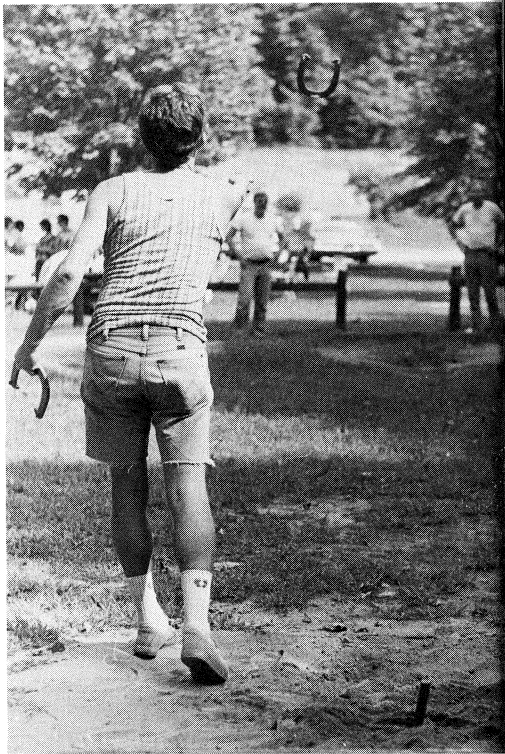
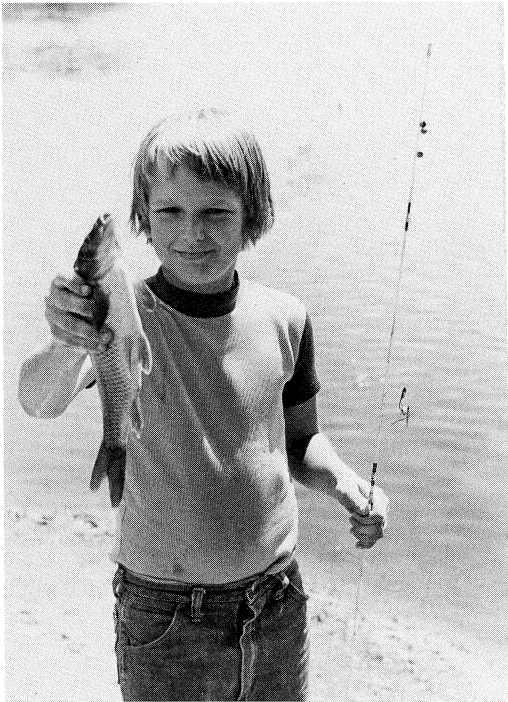
GIVE A BOY a bicycle, a fishing rod, and a pond, and he is the picture of contentment.



PLAY IS FREE on all county park courts except at the Van Saun tennis center. Pictured are courts in Saddle River County Park's Glen Rock area.



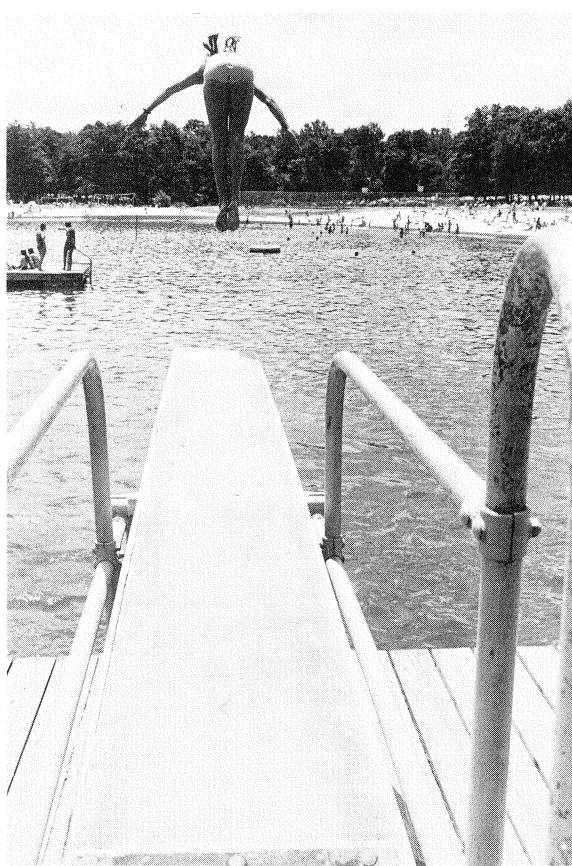
The Record Photo



Parks

Are

For Happiness



Happiness is feeding a pony, poking through a playground climber, catching a big fish, having a picnic, ringing a stake with a horseshoe, going skiing, going swimming, flying a kite, playing volley ball, camping in a tent—to name a few of the activities pursued in the Bergen County park system.

Tennis courts, golf courses, children's railroads, a pony ring, a wildlife center, a children's zoo, bicycle trails, hiking trails, guided hikes, nature programs, horseback riding facilities, ball fields, woodland and rose gardens, a wayside historical park, an 1860s' farmyard replica, shuffleboard courts, and ice skating ponds and flooded rinks are among sources of enjoyment in the county parks.



A Riding Center Opens In Overpeck Park

An all-weather horseback riding center, a 1-mile bicycle-trail extension with two bridges, a pony ring, a football-soccer field, and a field-house were opened for use in county parks during 1975.

Seven new tennis courts were readied for final surfacing, which was to be applied when temperatures are favorable in the spring of 1976.

The all-weather riding center, in Overpeck Park's Leonia South Area, at year end had a 110-by-220-foot indoor arena, two completed paddocks (construction had begun on a third paddock), and a completed section of fenced bridle trail. As more hydraulic fill settles, the bridle trail will be extended.

RIDING CLASSES OFFERED

The center opened with a stable of 30 horses and by year end was authorized to add 10

more. Patrons of similar ability and experience are grouped for instruction sessions so that the personnel and facilities can accommodate as many people as possible. A hay and grain building, tack room, and manager's apartment are part of the complex.

With the new extension and bridges, Saddle River County Park's northern bicycle trail is 3 miles long. One of the bridges links the park's Dunkerhook and Glen Rock Areas. The other bridge links the bicycle trail section on the Fair Lawn side of the Saddle River with the Dunkerhook Area. A new 3,000-foot path provides access to the trail from the intersection of Saddle River Road and Fair Lawn Avenue, Fair Lawn.

BICYCLE CROSSING PLANNED

A consulting engineer was engaged to draw plans for a bicycle-pedestrian crossing of the Saddle River linking bicycle paths in the Rochelle

THE LAKESIDE path at the Glen Rock Area is part of a 3-mile bicycle-pedestrian trail in Saddle River County Park.

BICYCLISTS approach one of the two new bridges—spanning the Saddle River and Ho-Ho-Kus Brook—on the 3-mile trail.



Park and Saddle Brook Areas of Saddle River County Park. A 1-mile path is projected for the Rochelle Park side of the stream, and Park Commission plans call for extending the existing Saddle Brook path to the Railroad Avenue Bridge.

The Park Commission established a pony ring in Van Saun County Park in 1975. An addition was built on the farmyard-scene barn to house the ponies temporarily, and an architect was engaged to draw plans for a pony barn.

ATHLETIC FIELDS BUILT

The football field in Overpeck County Park's Leonia North Area was completed in time for the 1975 season. (The baseball field in the area was virtually completed and is scheduled to open in spring of 1976.) A stone-surface roadway and two parking areas were constructed in 1975 for Leonia North, and construction began on a fieldhouse for use with both athletic fields and containing rest rooms for the park area.

The fieldhouse which was completed in 1975 is in the Riverside Park North Area in Lyndhurst. It is used by teams playing on the fenced athletic field equipped with lights. The contemporary-style fieldhouse, with its sloping roof and clerestory window, contains locker and shower rooms for both teams and a first aid room.

TENNIS COURTS AND LIGHTS

Four of the tennis courts nearly completed in 1975 are in the Leonia North Area of Overpeck Park. The other three are in the Fair Lawn portion of Saddle River County Park. There will be no charge for use of the courts.

Lighting was installed for the tennis courts in Overpeck Park's Palisades Park Area and in both the North and South Areas of Riverside Park. At year end installation of lighting was nearing completion at Wood Dale Park's courts.

Rest rooms were constructed in a house which came with the Ramapo Valley County Reservation site. Outside stairs were part of the project. Plans were made for utilizing part of the house as a nature education office.

GARDEN TERRACE STARTED

Work began on a flagstone terrace in the rhododendron garden being developed gradually beside the drive for the Bergen County Park Commission Wildlife Center. In other parks Commission crews planted 91 trees and 115 shrubs during 1975.

A consulting engineer was hired to draw preliminary plans for new concrete diving platforms at Darlington Park's swimming lakes.

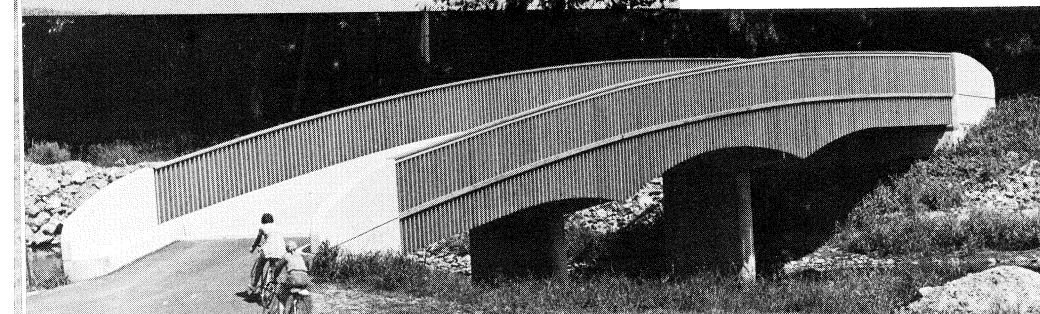
Work was completed on the base for a running track around the football field in the Palisades Park Area of Overpeck Park.

Eight-lesson riding courses were an innovation at Saddle Ridge Horseback Riding Area. Lighting extended hours of operation at Saddle Ridge when the daylight hours waned.

NATURE PROGRAMS FOR ALL

The Park Commission scheduled free public nature programs weekends and Tuesdays January through November. There were film festivals in February and December for vacationing school children. Park Commission naturalists scheduled special programs for 924 school classes.

A PONY RING was established at Van Saun Park.





Summer activities in the parks included free tennis clinics for Bergen children, free nature-study classes, guided nature hikes, eight performing-arts presentations, a series of outdoor story hours, the Park Commission's eleventh annual outdoor art show, and the Commission's annual tennis tournament. The performing arts programs included an American heritage song and narration presentation, a country music concert, music by a brass quintet, and a puppet enactment of folk tales. They were presented by the Park Commission in cooperation with the North Jersey Cultural Council.

THE FEES ADD UP

The Park Commission remitted to the County Treasury \$1,338,375 in revenue, representing an 11.33 increase over 1974 revenue. Rockleigh Bergen County Golf Course took in the largest amount, \$336,931. Next came Overpeck Bergen County Golf Course with \$249,126. Darlington County Park swimming season income totaled \$226.85. At Orchard Hills Bergen County Golf Course the total was \$113,155.

There were 91,852 Bergen residents with 1975 cards entitling them to resident rates at the golf courses, Darlington, Campgaw Mountain Ski Center, the Van Saun Park tennis center, and the two horseback riding facilities. Park Commission registrations totaled 38,257, each registration entitling all listed eligible family members to Park Commission cards. Registration is not necessary for children under 5 or Bergen residents over 65, so there are more Bergen visitors at fee facilities than the registration card total would indicate.

THE INDOOR ARENA enables the riding center to schedule instruction and horse shows without concern for the weather.

TWO PADDOCKS and a bridle trail section were completed in 1975. The trail will be extended as the hydraulic fill settles.



VAN SAUN DRAWS 1,371,400

There is no charge at most of the county park facilities and hence no statistical record of users. Personnel at Van Saun Park, with its popular free children's zoo, reported that the park's approximate 1975 attendance was 1,371,400, some 307,000 higher than in 1974.

Park-use permits totaled 5,509. Permits are required for organization picnics and other group activities in the parks and for the use of ballfields, campsites, and meeting rooms.

New equipment purchased in 1975 included a \$59,851 compressor for the ski center and tractors, trucks, spreaders, leaf blowers, chain saws, and snow plows.

TABLES BUILT AT JAIL

During the year, 300 picnic tables were constructed at the County Jail Annex for placement in county parks. The Bergen County Park Commission supplies the lumber and hardware and pays \$5 per table to the jail inmates' account. The project is beneficial to the inmates and to the county parks.

The tables are stained in the parks to which they are assigned. In response to requests from the public, Darlington Park received 150 of the new tables. Fifty went to Van Saun Park. Smaller quantities were placed in other county parks.

726 ACRES SOUGHT

The Bergen County Park Commission asked approval from the Board of Freeholders for acquisition of approximately 726 acres of property to be annexed to Ramapo Valley County Reservation. The value was appraised at \$1,565,350. The Commission received informal approval for State Green Acres matching funds toward the purchase. At year end the Commission was awaiting a report on a second appraisal, which had been requested by the Freeholders.

Default by the contractor halted construction of 18-hole Darlington Bergen County Golf Course, but construction of the golf house and maintenance building proceeded.

BUILDINGS ERECTED

At year end exteriors of the buildings had been painted, interior walls were going up, and mechanical and electrical installations were under way. Also the water line was being installed. The entrance road was nearly completed. Engineering studies were undertaken in preparation for resumption of golf course construction.

A dry chemical fire extinguishing system was installed late in the year at the snack bar areas at Darlington Park and Campgaw Mountain Reservation's visitors' center.

PAINTING IS A BIG JOB

Painting goes on all year in the park system. Among structures painted in 1975 were the Campgaw visitors' center and the golf house at Overpeck Course. Painters refurbished children's railroad trains, bridges, fences, picnic tables, stanchions, posts, rest rooms, and ski lift chairs.

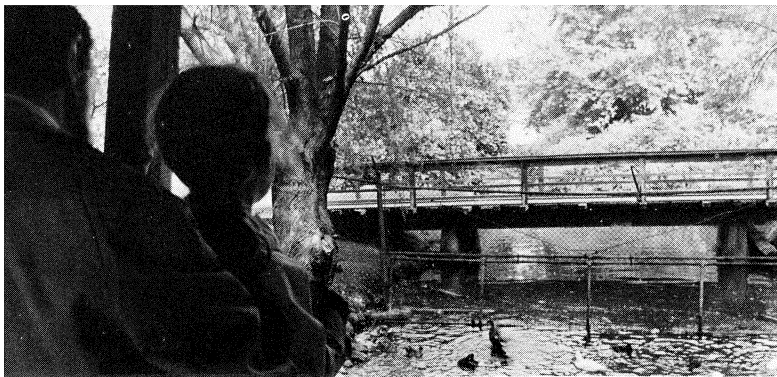
Park Commission workers installed drinking fountains, scoreboards, horse jumps, playground equipment, benches, flag poles, fencing, stanchions, signs, utility lines, drainage systems, cabinets, barn doors, and assorted other items indoors and out. They dug trenches, carted and graded stone and fill dirt, planted, fertilized, mowed, cleaned, repaired, replaced, rebuilt, sprayed, and raked. They removed debris and snow. They tended plants and zoo animals and assisted park visitors. They kept the log fire burning at Campgaw during ski season and sprayed machine-made snow on the slopes. They maintained high water-quality and safety standards at Darlington Park during the swimming season.

Leonia Lore 76 Photo

THE SODDED Football field in Overpeck County Park's Leonia North Area was ready in time for the 1975 season.

A FIELDHOUSE was built for the use of teams playing on the Riverside Park North ball field equipped with lights.





DAD picks up a youngster for a better view of the ducks.

COUNTY PARK ACREAGE

BERGEN COUNTY PARK COMMISSION

PARK	MUNICIPALITY	ACREAGE
Darlington County Park	Mahwah & Ramsey 231.11 83.13	314.24
Campgaw Mt. County Reservation	Mahwah, Oakland & Franklin Lakes 1056.42 189.12 105.56	1351.10
Bergen County Wildlife Center	Wyckoff	81.34
Wood Dale County Park	Woodcliff Lk., Hillsdale & Park Ridge 55.01 52.72 9.82	117.55
Rockleigh Bergen County Golf Course	Rockleigh, Norwood & Northvale 164.12 90.07 9.93	264.12
Pascack Brook County Park a) Pascack Brook Area	Westwood, River Vale 117.71 19.63	
b) Overbrook Minipark	Westwood 2.79	140.13
The Baylor Massacre County Park	River Vale	2.00
Saddle River County Park a) Wild Duck Pond Area	Ridgewood 81.98	
b) Glen Rock Area	Glen Rock 64.31	
c) Dunkerhook Area	Paramus 171.60	
d) Saddle Brook Area	Saddle Brook 79.87	
e) Rochelle Park Area	Rochelle Park 84.12	
f) Fair Lawn Area	Fair Lawn 93.81	575.69
Van Saun County Park	Paramus & River Edge 53.32 86.40	139.72
County Parks in Garfield	Dahnert's Lake & Belmont Hill 9.53 9	18.53
Overpeck County Park	Englewood, Leonia, Teaneck, Ridgefield 7.71 168.31 471.93 1.31	
	Ridgefield Park & Palisades Park 100.57 63.60	813.43
Undeveloped County Park Area	River Edge (Hackensack River)	.08
Wallington County Park	Wallington	22.99
Riverside County Park a) North Area	Lyndhurst - 76.46	
b) South Area	North Arlington - 32.06	108.52
Undeveloped County Park Area	Alpine	190.55
Ramapo Valley County Reservation	Mahwah	714.21
		4,854.20

REPORT OF PARTICIPATING FUNDS RECEIVED FROM ASSISTANCE PROGRAMS

LAND ACQUISITION

December 31st, 1975

Date	Project	Town	Acreage			
1) 12/13/62	Land for 9-hole addition to Rockleigh Golf Course	Norwood	86.80	\$ 260,000.00	State Green Acres	\$ 130,000.00
2) 3/18/63	Open space reserve	Alpine	93.10	400,000.00	State Green Acres	200,000.00
3) 4/26/63	Wildlife Center site	Wyckoff	81.35	400,000.00	State Green Acres	200,000.00
4) 1/15/64	Open space reserve	Alpine	97.45	310,000.00	State Green Acres	155,000.00
5) 2/ 9/65	Additional Saddle River Park property	Paramus	3.63	50,250.00	State Green Acres	25,125.00
6) 3/17/65 8/ 2/65	Darlington Park site Darlington Park site	Mahwah, Ramsey " "	178.26 —	1,150,000.00 (HUD)	State Green Acres \$575,000.00 U.S. Housing & Home Fin. 764,068.00 Agcy. \$189,068.00	
7) 6/15/67	Addition to Camp- gaw Reservation	Mahwah "	59.75 —	137,418.00	State Green Acres \$ 68,709.00 U.S. "HUD" 137,418.00 \$ 68,709.00	
6/ 9/69	Addition to Camp- gaw Reservation					
8) 10/ 2/72	Ramapo Valley Reservation site	Mahwah "	624.21 —	1,560,527.50	State Green Acres \$780,263.00 U.S. "BOR" 1,560,526.75 \$780,263.75	
3/12/73	Ramapo Valley Reservation site					
9) 1/11/68	Overpeck Park tidal lands	Teaneck, Leonia, * Englewood, Pal. Pk., Ridgefield Park	399.29	400,000.00	State Green Acres	200,000.00
			1,623.84	\$4,668,195.50		\$3,372,137.75

IMPROVEMENTS

10) 6/27/68	Improvements at Wildlife Center	Wyckoff	(81.35)	\$ 297,136.18	U.S. "BOR" \$ 148,568.09
				\$4,965,331.68	**\$3,520,705.84

* Prepared by R. M. Hirsh: rp

* While the County of Bergen was the owner in fee of these lands, the State of New Jersey, through extensive negotiations with the County, established its claim that this property (399.29 acres of a total of 813.43 acres in the Overpeck Area) was tidal land and as such was the property of the State. After receiving in payment from the County a fee of \$1,000.00 an acre — totalling \$400,000, the State granted the County a Riparian Grant. Subsequently the State, through the Green Acres Assistance Program, reimbursed the County half the cost (\$200,000) of this Riparian Grant.

** It is interesting to note that the County, through the Bergen County Park Commission, has received from the various State and Government Agencies, 71% of the total cost of the above 10 projects.

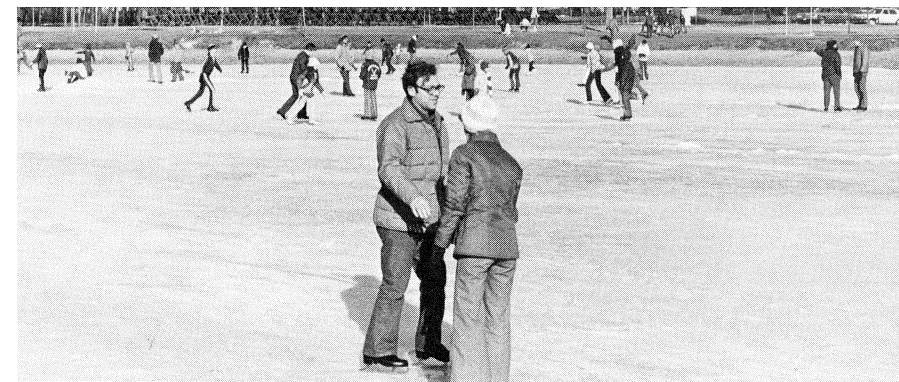
SUMMARY

Total contributed by State Green Acres Assistance Program	\$2,334,097.00
Total contributed by U.S. Government Agencies	1,186,608.84
	<u>\$3,520,705.84</u>

CONDENSED STATEMENT OF PROPERTIES
COMMITTED OR ACQUIRED FOR PARK PURPOSES
COMBINED BOND, BUDGET, AND OTHER CAPITAL FUNDS

Close of December 31, 1975

AREA	SUB-TOTAL		TOTALS	
	Acreage	Cost	Acreage	Cost
OVERPECK CREEK				
Private properties purchased	100.79	\$458,874.00		
Municipal properties donated or committed	712.64			
State Tidal Lands purchased		400,000.00	813.43	\$858,874.00
PASSAIC RIVER				
Private properties purchased	49.86	121,320.00		
Private properties donated	0.07	1.00		
Municipal properties donated or committed	81.58		131.51	121,321.00
SADDLE RIVER				
Private properties purchased	499.07	619,005.00		
Private properties donated	10.01	1.00		
Municipal properties donated	66.61	3,000.00	575.69	622,006.00
SOUTHWEST BERGEN				
Private properties purchased		2,200.00		
Municipal properties donated	18.53	2.00	18.53	2,202.00
VAN SAUN				
Private properties purchased or committed	138.33	204,709.73		
Private properties donated	1.39		139.72	204,709.73
NORTHWEST BERGEN				
Private properties purchased	2,227.88	4,152,259.21		
Private properties donated	56.88			
Municipal property donated	52.50			
Exchange of property with Public Utility	25.06			
County property dedicated for Park purposes	98.57		2,460.89	4,152,259.21
NORTHEAST BERGEN				
Private properties purchased	438.00	1,097,806.75		
Private properties donated	14.11			
Municipal properties donated	2.56		454.67	1,097,806.75
PASCACK BROOK				
Private properties purchased	24.67	53,221.88		
Municipal properties donated	117.46		142.13	53,221.88
PASCACK VALLEY				
Private properties purchased	109.98	232,869.00		
Private properties donated	0.88			
Municipal properties donated	6.69		117.55	232,869.00
HACKENSACK RIVER				
Private properties purchased			0.08	10.00
ALL AREAS				
Legals, Advertising, Engineering, etc. .				69,032.52
			4,854.20	\$7,414,312.09



SKATERS are happy to see the red ball go up at county parks.

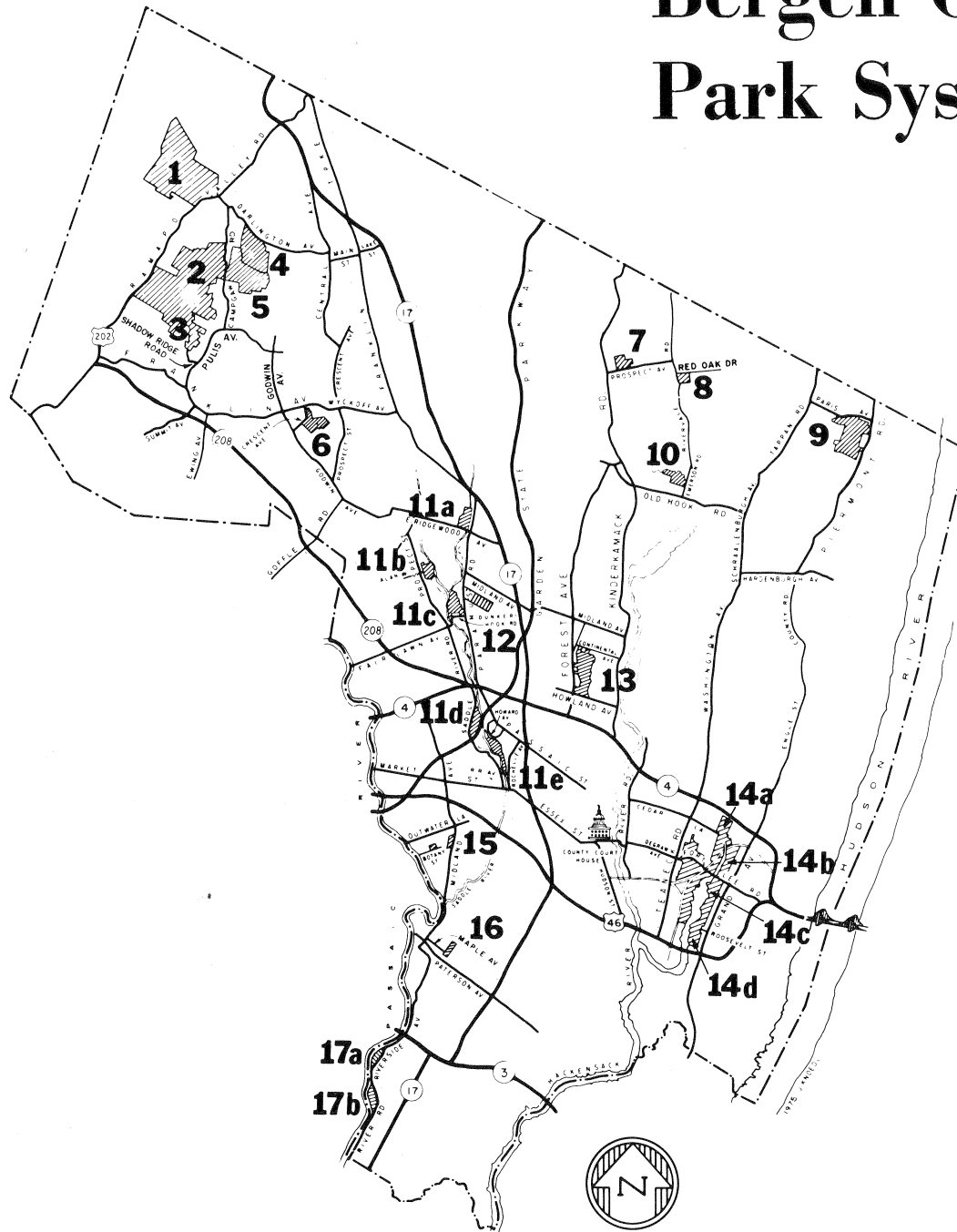
BERGEN COUNTY PARK COMMISSION
LAND ACQUISITION
SUMMARY

SOURCE OF APPROPRIATIONS AND DISBURSEMENTS

DESCRIPTION	Acreage	Disbursements	Appropriations
Park Commission Bond Funds (as adjusted)			\$ 5,354,200.08
Miscellaneous appropriation to Bond Account Re: Land Reclamation Corp. Prop. taxes			256.98
Park Commission Budget Funds			189,870.03
State of N. J. Green Acres Assistance Program (Joint Closing Account)			1,105,000.00
Capital Funds Surplus, Re: Green Acres			170,000.00
Capital Funds Surplus (Budget)			15,932.00
Capital Funds Surplus, Re: Federal Open Space Land Program			189,068.00
Trust Account, County Parks, Re: State of N. J. Route No. 95, Overpeck above 2.92 El.			199,985.00
Trust Account, County Parks, Re: Green Acres, Overpeck, Tidal Lands			200,000.00
DISBURSEMENTS			
Private Properties Committed or Acquired			
Bond Account	3,517.41	\$6,766,417.46	
Budget Account	179.65	175,860.11	
Municipal Properties Committed or Acquired			
Bond Account	1,056.33	3,000.00	
Budget Account	100.81	2.00	
State Bureau of Navigation, Tidal Lands Acq.			
Trust Account		199,985.00	
Green Acres Account		200,000.00	
Budget Account		15.00	
Legals, Adv. Engineering, etc.			
Bond Account		55,639.60	
Budget Account		13,392.92	
Dec. 31, 1975 to Balance (Available Bond Funds on Hand)		7,414,312.09	7,424,312.09
	4,854.20	\$7,424,312.09	\$7,424,312.09

Prepared by J. Santimauro, Fin. Mgr.

Bergen County Park System



1. RAMAPO VALLEY COUNTY RESERVATION

Ramapo Valley Road (Route 202), Mahwah
Hikers may explore the wooded hillside, with its mountain fishing pond and waterfall. Tent camping is permitted beside the Ramapo River and lower lake. Vehicles must be parked at the entrance. Canoe and raft owners have portage access to the Ramapo River. See the ranger for a sketch map of the hiking trails.

Guided hikes are scheduled for the public, nature programs for school classes. (Information at Wildlife Center.)

2. CAMPGAW MOUNTAIN COUNTY RESERVATION

Campgaw Road, Mahwah

This 1,351-acre wooded park is the largest property in the County Park system. It has hiking trails (sketch map available at the visitors' center), campsites (some with tent platform or adirondack shelter), picnic facilities, and children's rustic play equipment. The visitors' center, a ski shelter in winter, is utilized for nature education in other seasons.

SKI CENTER: Machine-made snow is sprayed on the 1,500-foot main slope, with two chair lifts (one has mid-station); the 600-foot school slope, with T-bar lift; and the 800-foot school slope, with rope tow. Flanking side trails, about 2,000 feet long, depend on natural snow. The visitors' center has a wood fire in the lounge, a snack bar, and a shop which rents and sells skiing equipment. Expert instruction is available.

NATURE EDUCATION: Public nature walks and programs are scheduled. (Information at Wildlife Center.) Courses are offered in summer. Special programs are arranged for groups.

3. SADDLE RIDGE HORSEBACK RIDING AREA

Shadow Ridge Road, Franklin Lakes (Off Pulis Avenue)
Riding instruction and guided trail riding (on horses from our stable) are popular at this facility high on Campgaw Mountain. Horse owners may purchase permits for the use of paddocks and the wooded bridle trail.

4. DARLINGTON COUNTY PARK

Darlington Avenue, Mahwah
There is swimming in two of the three lakes on this rolling site in foothills of the Ramapo Mountains. The third lake affords fishing and rental boating. There is an entrance fee

during the swimming season, Memorial Day weekend-Labor Day. The park has sand beaches, picnic groves, a fieldhouse with snack bar and open terraces, pavilions, children's playground, and courts for tennis, handball, shuffleboard, basketball, and horseshoe pitching.

The park is closed December 1-March 31.

5. DARLINGTON BERGEN COUNTY GOLF COURSE

Campgaw Road, Mahwah

This 18-hole course is under construction.

6. BERGEN COUNTY PARK COMMISSION WILDLIFE CENTER

Crescent Avenue, Wyckoff

Visitors can see and learn about wildlife of this area's natural habitat. The exhibit hall, which overlooks the waterfowl pond, has a meeting room and a browsing library. Naturalists are in attendance.

Outside there are shelters for live animals and birds and a ¾-mile nature walk. A printed trail guide is available from the naturalist.

The center offers public programs and classes and also schedules special programs for school groups and for organizations. Free public programs are presented on weekends January-April and September-November, on Tuesdays at 2 P.M. January-November. A printed program schedule is available. There are picnic tables on the hill. A shaded terrace garden featuring rhododendron is being developed beside the park drive. There are 25,000 daffodil bulbs on the hillside.

7. WOOD DALE COUNTY PARK

Prospect Avenue, Woodcliff Lake

The pond is the main attraction. In winter it is a popular ice skating area. In other seasons it affords fishing, duck feeding, and model-boat sailing.

The park has free tennis courts with lights, picnic facilities, and a children's playground.

8. BAYLOR MASSACRE BURIAL SITE

Red Oak Drive, River Vale (Off River Vale Road)

Visitors to this shaded wayside historical park may read markers telling of the Sept. 28, 1778 Baylor Massacre and may see the millstone which long ago covered the burial place on this site. Victims whose remains were uncovered here in August, 1967 were members of a detail in Col. George Baylor's Continental Army Cavalry regiment. Fifteen dragons died of wounds inflicted in a 2 A.M. British ambush.

9. ROCKLEIGH BERGEN COUNTY GOLF COURSE

Paris Avenue, Rockleigh

Lines form early at this 27-hole rolling course at the base of the Palisades' western slope.

The stone fieldhouse has a snack bar and pro shop. Golf cars and carts are available for rental.

10. PASCACK BROOK COUNTY PARK

Emerson Road, Westwood

A picnic grove overlooks the fishing pond. The park has three free tennis courts with lights, a practice backstop, a children's playground, and two ball fields.

11. SADDLE RIVER COUNTY PARK

This linear park will eventually flank Saddle River for 5½ miles, and will have scenic drives and paths. The park has five recreation areas and additional facilities.

a. Wild Duck Pond Area

East Ridgewood Avenue Ridgewood

Ducks abound on the pond, which is a popular center for ice skating and fishing as well as for duck feeding.

The park area has extensive picnic facilities, a large children's playground, and shuffleboard and horseshoe courts. A recreation room is available for scheduled meetings.

b. Glen Rock Area

Alan Avenue, just east of Prospect Street

Here too the pond is the focal point, affording duck feeding, fishing, and model boat sailing. The area has picnic facilities, a children's playground, free tennis courts, and a rink which is flooded in winter for ice skating.

c. Dunkerhook Area

Dunkerhook Road, Paramus

The cool shade of wooded picnic areas is especially welcome on a hot day.

Ducks in the area's winding stream look for handouts from park visitors. The area has a children's playground and horseshoe courts.

d. Saddle Brook Area

Saddle River Road

Picnic groves and a fishing lake are the most popular attractions. Model sailboat regattas may sometimes be seen on the lake. Duck feeding is popular here. A bicycle-pedestrian path circles the lake and continues southward beside the Saddle River for a mile.

The area has a children's playground and facilities for baseball, football, ice skating, and horseshoe pitching.

e. Rochelle Park Area

Railroad Avenue

There are picnic tables along the 1-mile streamside park drive. Other facilities are free tennis courts, a children's playground, and a play rink which is flooded in winter for ice skating.

Tower Restoration, Arcola, Paramus

The TOWER and paddle wheel, focal points of the famed Easton gardens, were reconstructed above the ruins of the original complex built circa 1900 near the site of the historical 1745 Red Mill. The reconstructed landmark may be seen from Saddle River and Paramus Roads south of Route 4.

A BICYCLE-PEDESTRIAN trail about 3 miles long starts at Williams and Union Streets, Fair Lawn, follows the stream, cuts through Dunkerhook Area and continues to the Glen Rock Area. There is an access path to the trail from the intersection of Saddle River Road and Fair Lawn Avenue, Fair Lawn.

THREE TENNIS COURTS are in the Fair Lawn portion of the park. Play is free. Access is from the bicycle-pedestrian trail and from the parking area off Dunkerhook Road west of the Saddle River.

12. ORCHARD HILLS BERGEN COUNTY GOLF COURSE

Paramus Road, Paramus

Mature trees and shrubs grace this nine-hole course on Bergen Community College property. The Park Commission renovated the course and is operating it under contract with the College.

The course may be played twice per greens fee.

The golf house has food vending machines and a small pro shop.

13. VAN SAUN COUNTY PARK

Entrances on Forest and Continental Avenues, Paramus and Howland Avenue, River Edge

This is our most popular and most complete County park. The children's zoo and children's railroad are perhaps the best known features. The train tracks form a loop around the zoo, a walk-through aviary and an 1860s farmyard scene.

A 12-court tennis center, a 6-acre lake which affords fishing and ice skating, picnic groves, a large children's playground, and a shaded garden around historic Washington Spring are among other features of the park. Park facilities include a pony ring, a snack shop, a bicycle path, shuffleboard and horseshoe courts, sledding slopes, ball fields, and an open play area.

Free tennis clinics are conducted all summer for registered residents aged 8-17.

The Park Commission sponsors an outdoor art show here annually, in late summer. Entry forms may be obtained from the Commission office.

14. OVERPECK COUNTY PARK

This 813-acre meadowland site is being developed gradually as Bergen County's central park with a variety of recreation facilities. Excavation of a 37-acre lake north of Fort Lee Road has been completed, and a 120-acre lake is being excavated to the south. Plans call for picnic areas and landscaped paths around the lakes.

Current facilities include:

a. Overpeck Bergen County Golf Course

East Cedar Lane, Teaneck

There are two ponds, two lagoons, and an 8-acre lake on this 18-hole course. The contemporary redwood golf house contains a lounge, snack bar, deck, and pro shop.



NATURE programs and classes are scheduled in all seasons.

b. Leonia North Area

Fort Lee Road

Four free tennis courts, a 1¼-mile figure-8 bicycle path, football and baseball fields, and a soccer playing area are the sports facilities here. There is a practice backstop with the tennis courts.

c. Leonia South Area

Fort Lee Road

An all-weather horseback riding center is the main attraction. It has an indoor riding arena, paddocks, and a fenced bridle trail segment. The trail will be extended as hydraulic fill settles. Group riding lessons are offered. Lessons and horse rental are by appointment. Horse owners may pay an annual fee for use of outdoor facilities and an hourly fee for use of the arena (subject to availability). The park area has a wild west children's playground, picnic tables, and a rink which is flooded in winter for ice skating. A wildlife refuge adjoins the area.

d. Palisades Park Area

Roosevelt Street, off Grand Avenue

Sports facilities in this section are four free tennis courts, with lights and practice backstop, and sodded baseball and football fields with bleachers. There is a fieldhouse.

A running track around the football field is under construction.

15. COUNTY PARKS IN GARFIELD

Dahnert's Lake

Midland Avenue

The pond is the center of activity. It affords ice skating, duck feeding, fishing, and model boat sailing.

The park has picnic facilities and a children's playground.

Belmont Hill

Botany Street

A hilltop rose garden containing more than 55 rose varieties attracts many visitors in June and early fall. The park also has a scenic lookout, children's play equipment, and picnic tables.

16. WALLINGTON COUNTY PARK

Rose Street, Off Paterson Avenue Wallington

The pond is used for ice skating, fishing, and model boat sailing. Sledding slopes make this an all-season park. It has baseball, football and picnicking facilities, free tennis courts, and a children's playground.

17. RIVERSIDE COUNTY PARK

Both the North and South Areas of this southwest Bergen park are on the Passaic River.

a. North Area

Riverside Avenue, Lyndhurst

Picnicking is popular here. Free tennis courts with lights, horseshoe courts, and a children's playground are among the area's facilities. One of the ball fields has lights and a fieldhouse. There is a play rink which is flooded in winter for ice skating.

b. South Area

River Road, North Arlington

The children's railroad, which operates on weekends and holidays April-October, and a wild west playground are the youngsters' favorite features here. The park area also has three free tennis courts with practice backstop and lights, picnic facilities, ball fields, a rink which is flooded in winter for ice skating, and horseshoe courts.



Bergen County Park Commission Annual Report, 1975
