

Bergen County Park Commission

A black and white photograph of two people riding horses on a dirt path through a wooded area. The person in the foreground is a man on a dark horse, and the person in the background is a woman on a lighter horse. A wooden fence is visible behind them.

Annual Report, 1974

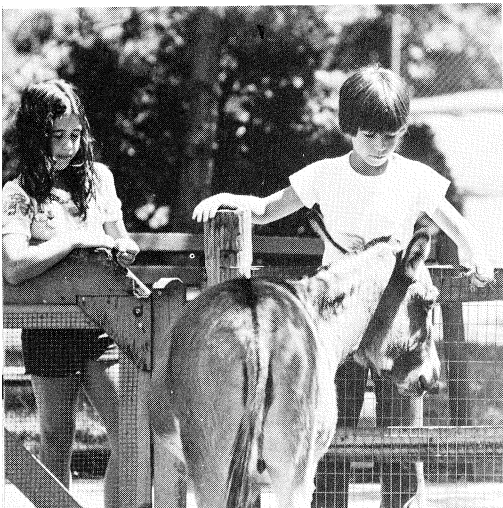


A CHOICE OF LAKES: At Ramapo Valley County Reservation there is tent camping beside the lower lake and good fishing in the mountain pond. You may also camp beside and fish in the Ramapo River, which flows through the Reservation. You enter on foot, leaving car fumes behind in the parking area.

COVER PICTURE: Saddle Ridge Horseback Riding Area opened in 1974 on the hilltop site of a deactivated Nike installation. The wooded bridle trail extends into adjoining Campgaw Mountain County Reservation.

Photo by Kent Fulcher

PETTING young farm animals brings pleasure to children's zoo visitors at Van Saun County Park. This section of the zoo is adjacent to an 1860s' farmyard replica.



BERGEN COUNTY PARK COMMISSION, 1974 Hackensack, New Jersey

Otto C. Pehle, President

Peter W. Occhipinti, Vice President

George Warchol

Roy Woodward, Secretary

Mrs. Ina Albert

Joseph A. Carucci, Assistant Secretary

Wilbur J. Lotz

Lawrence E. Nyland

Henry G. Avery

James A. McFaul, Executive Director

Max A. Hasse, Jr., Staff Director

Robert C. Hespe, Assistant County Counsel

BOARD OF CHOSEN FREEHOLDERS, 1974

Henry L. Hoebel, Director*

Thomas J. Costa, Deputy Director

Walter Marut

William J. Dorgan

Kevin J. McDermott

Myra Elliott (Mrs.)

Harry Randall, Jr.

Francis X. Herbert

Victor M. Williams

Richard L. Nelson, County Administrator

Michael J. Ferrara, County Counsel

* Chairman, Park and Recreation Committee

A Dream Becomes Reality

When you look down on Overpeck County Park from a helicopter, you see green acres and sparkling water, you see tennis players and golfers and bicyclists, you see a beautiful park developing where there had been garbage dumps.

A 37-acre lake has been excavated, and excavation of a 120-acre lake is well under way. In time both lakes will be bordered by landscaped paths, picnic areas, and green open space. There is a new bicycle path beside the completed lake.

The beauty of the golf course—with its ponds, lagoons, and lake—is enjoyed by passers-by as well as players.

Soon there will be the rural charm of green pastures, just minutes from the George Washington Bridge and New York City. The pastures will be the grazing land for the horseback riding center under construction south of Fort Lee Road, Leonia. The center will have an indoor riding area as well as the paddocks and bridle trail for outdoor riding.

Overpeck Park is no longer a tantalizing distant dream. Despite fragmentation of the site by great highways, despite thorny legal entanglements, despite the need for mountains of fill on the marshy terrain, we are getting our beautiful big park, our desperately needed park, in crowded southeast Bergen.

Otto C. Pehle
Bergen County Park Commission President



The Record Photo

SLIPPERY FUN: Happy memories of the chutes at the Darlington County Park swimming lakes and the Campgaw Mountain Ski Center slopes linger on long after the end of the swimming and skiing seasons. Playground slides in the parks provide downhill fun in all seasons.



OVERPECK County Park's popular golf course, with its ponds and lagoons, brings scenic beauty to the area. Other park facilities include free tennis courts, athletic fields, and a bicycle-pedestrian path.

Bicycles And Horses To The Fore

Horseback riding facilities, bicycle paths, the golf course taking shape in Mahwah and Ramsey, sodded baseball and football fields in Overpeck Park, and a fieldhouse for the Riverside Park North ballfield with lighting were among 1974 construction projects in Bergen's county park system.

Saddle Ridge Horseback Riding Area was opened August 24 in Franklin Lakes, and by year end construction was well under way on a riding center in the Leonia South Area of Overpeck Park.

Two bridges were built for a Saddle River County bicycle route, and some 5,000 feet of new path were readied for paving. The extension brings to about 3 miles the length of the bicycle route. Bicycle paths were constructed in 1974 also at Overpeck Park, Van Saun Park, and the Saddle Brook Area of Saddle River Park.

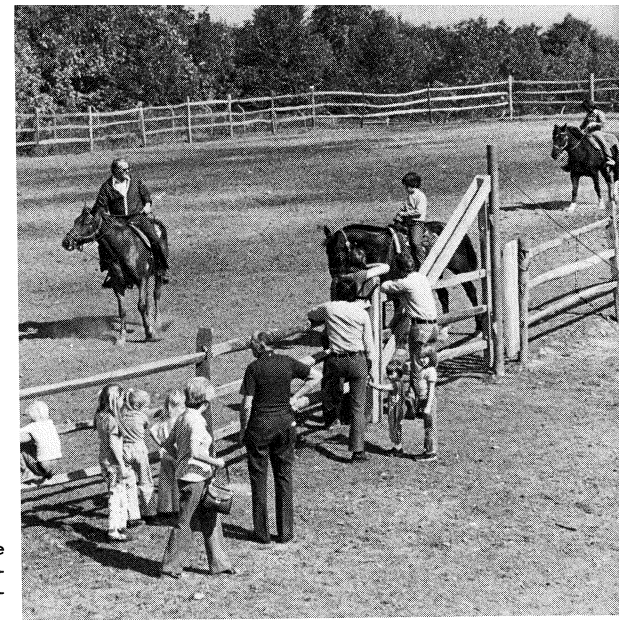
WOODED BRIDLE TRAIL

Officers' quarters on the site of a deactivated Nike installation on Campgaw Mountain were



SADDLE RIDGE stables are in converted Nike base officers' quarters.

PADDOCKS at Saddle Ridge afford a sweeping view of the countryside.



converted to house Saddle Ridge horse stalls, the riding area office, rest rooms, and the manager's apartment. The facility has two hilltop paddocks and a wooded bridle trail extending into Campgaw Mountain County Reservation. Popular from the start, the facility was unable to accommodate all comers. Fees from the riders who could be accommodated totaled \$22,530 from the August 24 opening to December 1.

The horseback riding center under construction in Leonia will have indoor as well as outdoor riding facilities. The indoor riding arena will be flanked by the stables on the left and the office, rest rooms, and manager's apartment on the right. Exterior walls will be of striated exposed aggregate to a height of 8 feet, and above that there will be prefinished steel panels in a soft shade of green.

PADDOCKS AND PATHS READIED

The paddock area was filled and graded. (Fill included some 30,000 cubic yards of free meadow mat from the State sports arena construction site.) Initial basework for the drive and parking areas was completed by year end, and the bridle trail was under development.

BICYCLING's popularity led the Park Commission to develop paths at four county park areas in 1974. The path shown is in Van Saun Park.

AN INDOOR riding arena will occupy the central section of this structure taking shape in Overpeck County Park's Leonia South Area.

The Saddle River Park 3-mile bicycle route may be entered from the park's Glen Rock and Dunkerhook Areas and from Williams or Union Street in Fair Lawn. Public use will be limited to bicycles and pedestrians.

A figure-8 bicycle path approximately 1¼ miles in length was constructed beside the new lake in Overpeck Park's Leonia North Area. Also completed in 1974 were the 4,500-foot bicycle path on the west side of Van Saun Park and a bicycle path which follows the Saddle River for about a mile in Saddle Brook.

GOLF HOUSE UNDER CONTRACT

Contracts were awarded for construction of the golf house and maintenance building for the developing Darlington Bergen County Golf Course, and work was well along on the first nine holes. The contemporary-style redwood and decorative cement block golf house was designed to meet the need as economically as possible.

Sodded baseball and football fields were built in Overpeck Park's Leonia North Area, and at year end sitework was underway for four free tennis courts and for the drive and parking areas.

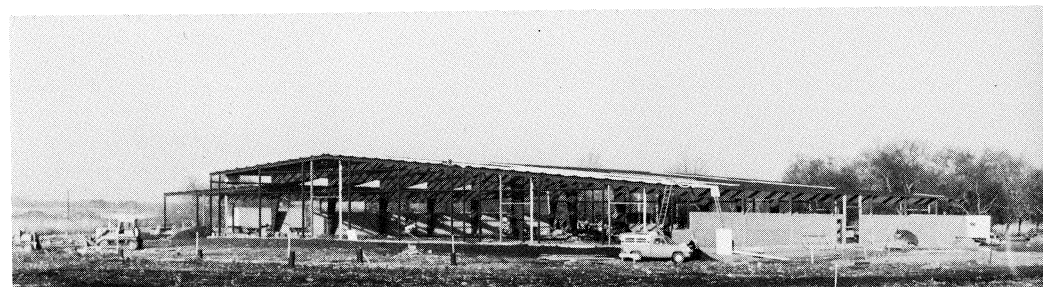
Contracts were awarded for the lighting of the free tennis courts at Overpeck Park's Palisades Park Area and at both Riverside Park Areas.

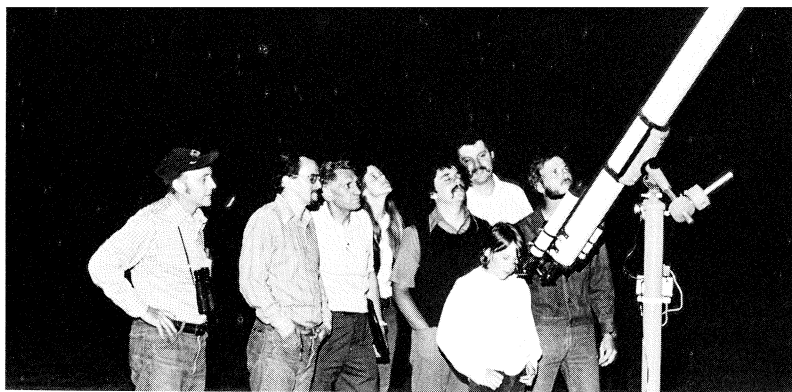
Construction was begun on a contemporary-style fieldhouse for the Riverside Park North ballfield equipped with lights. The design includes a sloping roof and clerestory windows.

NATURE PROGRAMS ALL YEAR

Park Commission nature education activities continued to be very popular. There were free public programs and guided walks in all seasons and free summer nature courses. Special programs were arranged for 890 groups of school children in the first 11 months of the year. Monthly nature and craft exhibits were inaugurated at the Bergen County Park Commission Wildlife Center, which attracted ever increasing throngs of visitors.

Twelve performing-arts programs were presented at Van Saun and Darlington Parks under the joint sponsorship of the Bergen County Park Commission and the North Jersey Cultural Council. Presentations included concerts, modern dance, and drama. Van Saun Park was host to





THE NIGHT SKY is studied by participants in a program at Campgaw Mountain Reservation. Nature programs are scheduled in all seasons.

the Cultural Council's outdoor sculpture exhibit.

Professional storyteller Kathryn Farnsworth was engaged for a series of story hours in Van Saun Park.

FREE JUNIOR TENNIS CLINICS

There were free tennis clinics all summer at Van Saun for Bergen residents aged 8-17 having Park Commission registration. The Park Commission's annual adult tennis tournament and outdoor art show were also at Van Saun, as was the popular 4-H Fair. In July alone, Van Saun had an approximate attendance of 191,050.

In the fiscal period ending November 30, the County Treasurer received \$1,202,122 in revenue from park fee facilities. Rockleigh Golf Course took in \$343,425, Overpeck Golf Course \$244,744, Darlington \$208,344.

The 34,900 Park Commission registrations in 1974 gave resident-rate privileges to 101,727 Bergen residents. (Each registration entitles all eligible family members to the privileges. Registration is applicable for special rates at the Campgaw Mountain Ski Center, the three county golf courses, Saddle Ridge Horseback Riding Area, the tennis center in Van Saun Park, and Darlington Park in swim season.) The 101,727 figure, which represents more than a tenth of the population, doesn't include users under 5 and over 65 as they do not need registration.

PERMITS ADD UP TO 5,489

It might be noted that most facilities in the 24-area park system are open to the public without charge or registration requirement. Permits are required for some facilities and some activities, notably ballfields and group picnics. During 1974 the Park Commission issued 5,489 park-use permits.

County park system acreage increased by 182.59 acres in 1974. The largest addition,

98.57 acres of the 190-acre site on which Darlington Bergen County Golf Course is being built, had in effect already been part of the park network—but it was officially dedicated as parkland in 1974 by the Bergen County Board of Chosen Freeholders.

Mr. and Mrs. Clifford Jordan of Glen Rock donated a 56.88-acre heavily wooded tract in Mahwah. The appraised value of the donation is \$227,500.

ACREAGE INCREASED

Exchange of property between the County and the Orange and Rockland Electric Company enlarged Ramapo Valley Reservation by 33.12

SNOW decorates one of two 113-foot concrete spans built in 1974 on the 3-mile bicycle-pedestrian route in Saddle River County Park.



Construction projects in 1974 included a replacement foot bridge in Washington Spring Garden, a force sewer main, steel security screens, rip-rap on stream banks, entrance gates, and retaining walls.

The Commission installed irrigation lines, a transformer, heaters, drain pipe, pumps, and playground equipment.

Maintenance work included patching and seal-coating of roads, paths, and ice rinks, spreading of fill and topsoil and fertilizer, carting of mulch, seeding, grass cutting, digging of drains and trenches, cleaning of clogged pipes, repainting of buildings and equipment, ragweed spraying, and bridle-trail regrading.



The Record Photo
TENNIS instruction is free for young participants in the Park Commission's vacation tennis clinics at Van Saun Park.

FERNS RESCUED AND PLANTED

The Park Commission collected trash from County Government facilities.

Commission personnel dug and hauled quantities of ferns from a roadway in Vernon Township for replanting at the Wildlife Center.

Purchases during the year included trucks, tractors, a sewer cleaner, a horse trailer, bicycle racks, game table, pedal boats, funnel ball units, and playground slides.

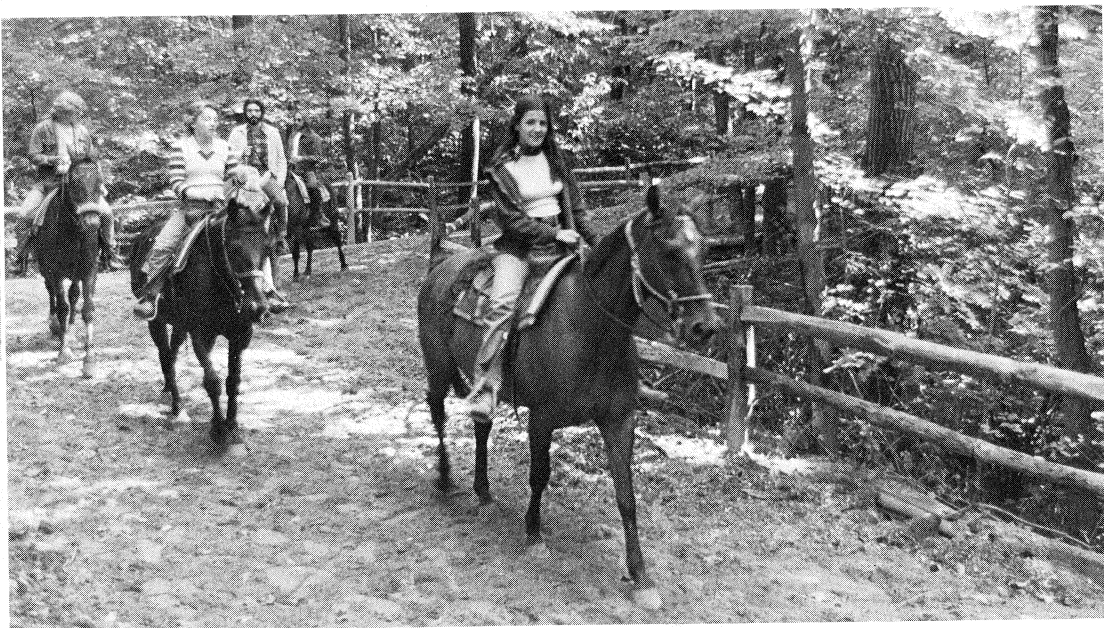
Freeholder Director Henry L. Hoebel proposed and the Park Commission approved a Bicentennial project, the planting of 200 shade trees in Overpeck County Park as a memorial to the nation's founding fathers.

The shaded garden beside the Wildlife Center drive continued to expand in 1974. Plantings in other parks included 270 shade trees, 85 flowering trees, 25 flowering shrubs, and 80 evergreens.



THE OUTDOOR art show at Van Saun Park is an annual project of the Park Commission. Cash prizes go to 13 winners.

We're Hitting The Trail



THE WOODED bridle trail on Campgaw Mountain is entered from Saddle Ridge Horseback Riding Area, which was opened in 1974 by the Bergen County Park Commission. Horses are available for rental and instruction. Horse owners may purchase passes entitling them to use the trail and paddocks.

On Horseback

NATURE HIKE participants are on the lookout for interesting wildlife species near the mountain pond at Ramapo Valley County Reservation. There are guided hikes at Campgaw Mountain County Reservation as well as at Ramapo Valley.

The Record Photo

On Foot



VAN SAUN County Park's new 4,500-foot bicycle path is a popular meeting place for weekend pedalers. Part of the path is beside the lake and brook.

HEMLOCK TRAIL at Campgaw Mountain County Reservation is explored by two boys. Sketch maps of the hiking trails at Campgaw and Ramapo Valley Reservations may be obtained at the Campgaw visitor's center. There is a printed guide for Campgaw's Indian Trail. Ramapo Valley visitors may obtain hiking information from the ranger.

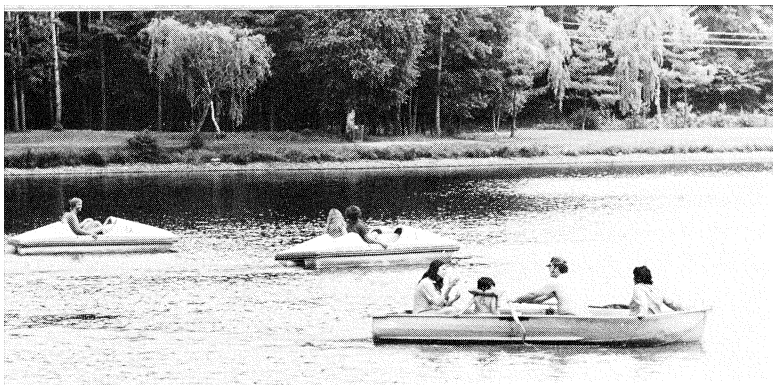


THE VIEW from the bridge is enjoyed by two bicyclists. With the two new bridges built in 1974 (replacing this one) and some 5,000 feet of new pathway readied for paving, the Saddle River County Park bicycle-pedestrian trail will be about 3 miles long.

On Bicycles



PHYSICAL FITNESS is important to the bicyclists and joggers who show up regularly at the new figure-8 pathway beside the lake at Overpeck County Park's Leonia North Area.



THERE ARE pedal boats and row boats in the Darlington Park rental fleet.

COUNTY PARK ACREAGE

BERGEN COUNTY PARK COMMISSION

PARK	MUNICIPALITY	ACREAGE
Darlington County Park	Mahwah & Ramsey 230.95 83.13	314.08
Campgaw Mt. County Reservation	Mahwah, Oakland & Franklin Lakes 1056.42 189.12 105.56	1351.10
Bergen County Wildlife Center	Wyckoff	81.34
Wood Dale County Park	Woodcliff Lk., Hillsdale & Park Ridge 55.01 52.72 9.82	117.55
Rockleigh Bergen County Golf Course	Rockleigh, Norwood & Northvale 164.12 90.07 9.93	264.12
Pascack Brook County Park		
a) Pascack Brook Area	Westwood, River Vale 117.71 19.63	
b) Overbrook Minipark	Westwood 2.79	140.13
The Baylor Massacre County Park	River Vale	2.00
Saddle River County Park		
a) Wild Duck Pond Area	Ridgewood 81.98	
b) Glen Rock Area	Glen Rock 64.31	
c) Dunkerhook Area	Paramus 171.60	
d) Saddle Brook Area	Saddle Brook 79.87	
e) Rochelle Park Area	Rochelle Park 84.12	
f) Fair Lawn Area	Fair Lawn 93.81	575.69
Van Saun County Park	Paramus & River Edge 53.32 86.40	139.72
County Parks in Garfield	Dahnert's Lake & Belmont Hill 9.53 9	18.53
Overpeck County Park	Englewood, Leonia, Teaneck, Ridgefield 7.71 168.31 471.93 1.31	
	Ridgefield Park & Palisades Park 100.57 63.60	813.43
Undeveloped County Park Area	River Edge (Hackensack River)	.08
Wallington County Park	Wallington	22.99
Riverside County Park		
a) North Area	Lyndhurst - 76.46	
b) South Area	North Arlington - 32.06	108.52
Undeveloped County Park Area	Alpine	190.55
Ramapo Valley County Reservation	Mahwah	714.21
		4,854.04

REPORT OF PARTICIPATING FUNDS RECEIVED FROM ASSISTANCE PROGRAMS

LAND ACQUISITION

December 31st, 1974

Date	Project	Town	Acreage			
1) 12/13/62	Land for 9-hole addition to Rockleigh Golf Course	Norwood	86.80	\$ 260,000.00	State Green Acres	\$ 130,000.00
2) 3/18/63	Open space reserve	Alpine	93.10	400,000.00	State Green Acres	200,000.00
3) 4/26/63	Wildlife Center site	Wyckoff	81.35	400,000.00	State Green Acres	200,000.00
4) 1/15/64	Open space reserve	Alpine	97.45	310,000.00	State Green Acres	155,000.00
5) 2/ 9/65	Additional Saddle River Park property	Paramus	3.63	50,250.00	State Green Acres	25,125.00
6) 3/17/65 8/ 2/65	Darlington Park site Darlington Park site	Mahwah, Ramsey " "	178.26 —	1,150,000.00 (HUD)	State Green Acres \$575,000.00 U.S. Housing & Home Fin. 764,068.00 Agcy. \$189,068.00	
7) 6/15/67	Addition to Camp- gaw Reservation	Mahwah "	59.75 —	137,418.00	State Green Acres \$ 68,709.00 U.S. "HUD" 137,418.00 \$ 68,709.00	
6/ 9/69	Addition to Camp- gaw Reservation					
8) 10/ 2/72	Ramapo Valley Reservation site	Mahwah "	624.21 —	1,560,527.50	State Green Acres \$780,263.00 U.S. "BOR" 1,560,526.75 \$780,263.75	
3/12/73	Ramapo Valley Reservation site					
9) 1/11/68	Overpeck Park tidal lands	Teaneck, Leonia, * Englewood, Pal. Pk., Ridgefield Park	399.29	400,000.00	State Green Acres	200,000.00
			1,623.84	\$4,668,195.50		\$3,372,137.75

IMPROVEMENTS

10) 6/27/68	Improvements at Wildlife Center	Wyckoff	(81.35)	\$ 297,136.18	U.S. "BOR" \$ 148,568.09
				\$4,965,331.68	**\$3,520,705.84

* Prepared by R. M. Hirsh: rp

* While the County of Bergen was the owner in fee of these lands, the State of New Jersey, through extensive negotiations with the County, established its claim that this property (399.29 acres of a total of 813.43 acres in the Overpeck Area) was tidal land and as such was the property of the State. After receiving in payment from the County a fee of \$1,000.00 an acre — totalling \$400,000, the State granted the County a Riparian Grant. Subsequently the State, through the Green Acres Assistance Program, reimbursed the County half the cost (\$200,000) of this Riparian Grant.

** It is interesting to note that the County, through the Bergen County Park Commission, has received from the various State and Government Agencies, 71% of the total cost of the above 10 projects.

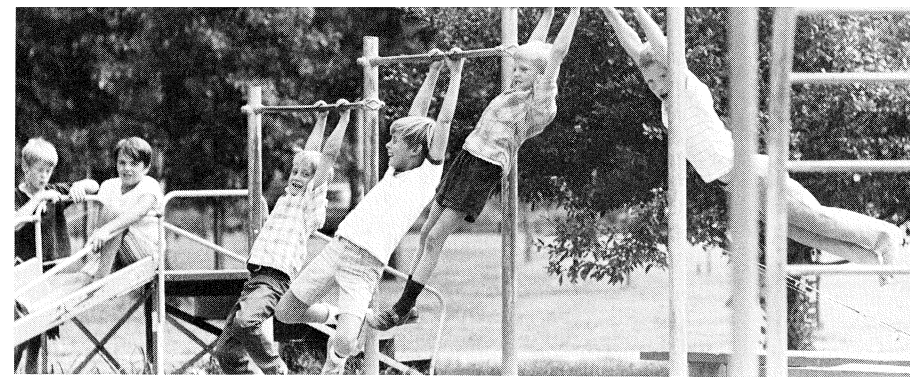
SUMMARY

Total contributed by State Green Acres Assistance Program	\$2,334,097.00
Total contributed by U.S. Government Agencies	1,186,608.84
	<u>\$3,520,705.84</u>

CONDENSED STATEMENT OF PROPERTIES
COMMITTED OR ACQUIRED FOR PARK PURPOSES
COMBINED BOND, BUDGET, AND OTHER CAPITAL FUNDS

Close of December 31, 1974

AREA	SUB-TOTAL		TOTALS	
	Acreage	Cost	Acreage	Cost
OVERPECK CREEK				
Private properties purchased	100.79	\$458,874.00		
Municipal properties donated				
or committed	712.64			
State Tidal Lands purchased		400,000.00	813.43	\$858,874.00
PASSAIC RIVER				
Private properties purchased	49.86	121,320.00		
Private properties donated	0.07	1.00		
Municipal properties donated				
or committed	81.58		131.51	121,321.00
SADDLE RIVER				
Private properties purchased	499.07	619,005.00		
Private properties donated	10.01	1.00		
Municipal properties donated	66.61	3,000.00	575.69	622,006.00
SOUTHWEST BERGEN				
Private properties purchased		2,200.00		
Municipal properties donated	18.53	2.00	18.53	2,202.00
VAN SAUN				
Private properties purchased				
or committed	138.33	204,709.73		
Private properties donated	1.39		139.72	204,709.73
NORTHWEST BERGEN				
Private properties purchased	2,227.88	4,152,259.21		
Private properties donated	56.88			
Municipal property donated	52.50			
Exchange of property with				
Public Utility	24.90			
County property dedicated for				
Park purposes	98.57		2,460.73	4,152,259.21
NORTHEAST BERGEN				
Private properties purchased	438.00	1,097,806.75		
Private properties donated	14.11			
Municipal properties donated	2.56		454.67	1,097,806.75
PASCACK BROOK				
Private properties purchased	24.67	53,221.88		
Municipal properties donated	117.46		142.13	53,221.88
PASCACK VALLEY				
Private properties purchased	109.98	232,869.00		
Private properties donated	0.88			
Municipal properties donated	6.69		117.55	232,869.00
HACKENSACK RIVER				
Private properties purchased			0.08	10.00
ALL AREAS				
Legals, Advertising, Engineering, etc. . .				65,682.52
			4,854.04	7,410,962.09

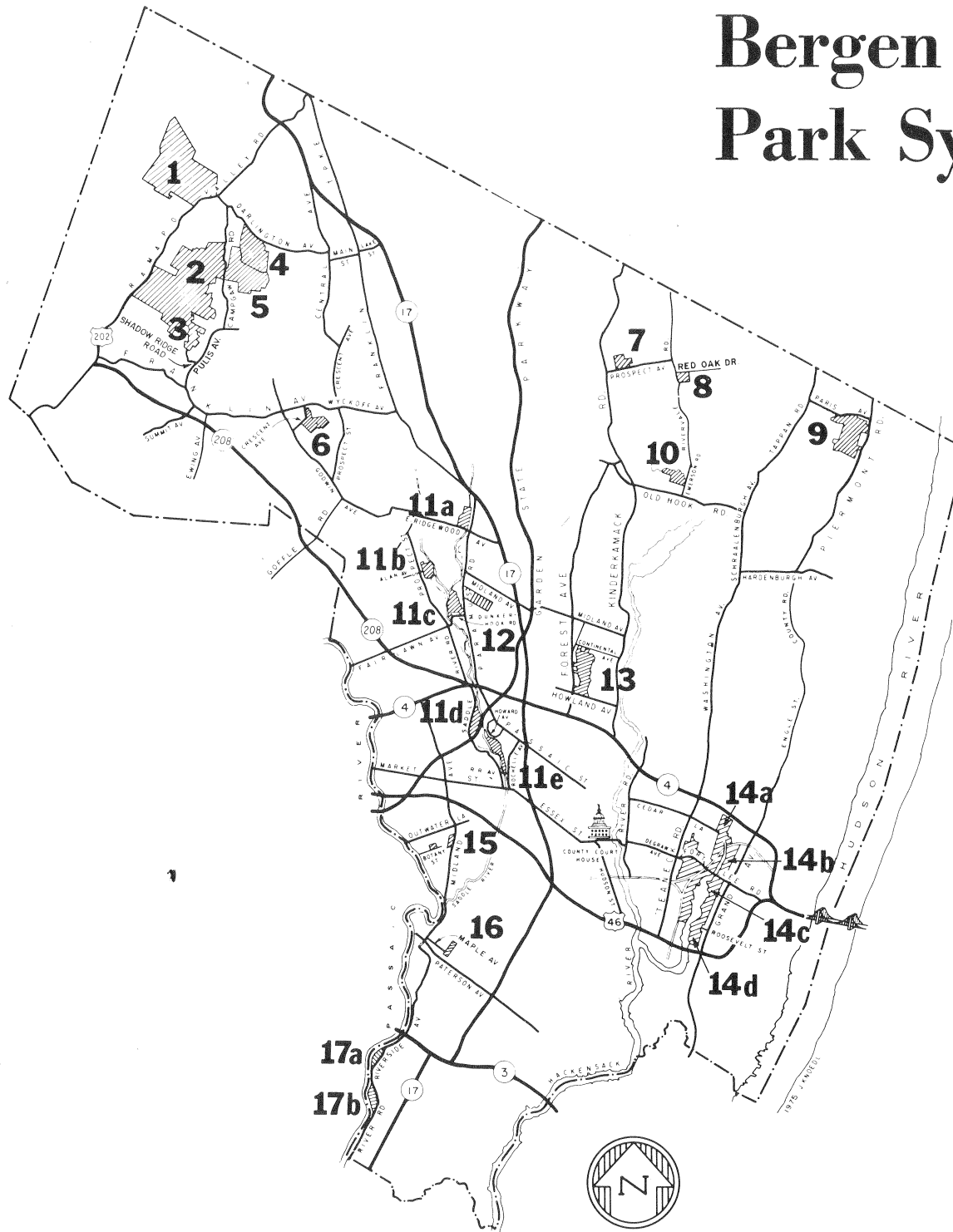


BERGEN COUNTY PARK COMMISSION
LAND ACQUISITION
SUMMARY

SOURCE OF APPROPRIATIONS AND DISBURSEMENTS

DESCRIPTION	Acreage	Disbursements	Appropriations
Park Commission Bond Funds (as adjusted)			\$ 5,354,200.08
Miscellaneous appropriation to Bond Account			
Re: Land Reclamation Corp. Prop. taxes			256.98
Park Commission Budget Funds			186,520.03
State of N. J. Green Acres Assistance Program			
(Joint Closing Account)			1,105,000.00
Capital Funds Surplus, Re: Green Acres			170,000.00
Capital Funds Surplus (Budget)			15,932.00
Capital Funds Surplus, Re: Federal Open Space			
Land Program			189,068.00
Trust Account, County Parks, Re: State of N. J.			
Route No. 95, Overpeck above 2.92 El.			199,985.00
Trust Account, County Parks, Re: Green Acres,			
Overpeck, Tidal Lands			200,000.00
DISBURSEMENTS			
Private Properties Committed or Acquired			
Bond Account	3,517.41	6,766,417.46	
Budget Account	179.49	175,860.11	
Municipal Properties Committed or Acquired			
Bond Account	1,056.33	3,000.00	
Budget Account	100.81	2.00	
State Bureau of Navigation, Tidal Lands Acq.			
Trust Account		199,985.00	
Green Acres Account		200,000.00	
Budget Account		15.00	
Legals, Adv. Engineering, etc.			
Bond Account		55,039.60	
Budget Account		10,642.92	
Dec. 31, 1974 to Balance (Available Bond Funds		7,410,462.09	7,420,962.09
on Hand)		10,000.000	
	4,854.04	7,420,962.09	7,420,962.09

Bergen County Park System



1. RAMAPO VALLEY COUNTY RESERVATION

Ramapo Valley Road (Route 202), Mahwah

Hikers may explore the wooded hillside, with its mountain fishing pond and waterfall. Tent camping is permitted beside the Ramapo River and lower lake. Vehicles must be parked at the entrance. Canoe and raft owners have portage access to the Ramapo River. See the ranger for a sketch map of the hiking trails.

2. CAMPGAW MOUNTAIN COUNTY RESERVATION

Campgaw Road, Mahwah

This 1,351-acre wooded park is the largest property in the County Park system. It has hiking trails (sketch map available at the visitors' center), campsites (some with tent platform or adirondack shelter), picnic facilities, and children's rustic play equipment. The visitors' center, a ski shelter in winter, is utilized for nature education in other seasons.

SKI CENTER: Machine-made snow is sprayed on the 1,500-foot main slope, with two chair lifts (one has mid-station); the 600-foot school slope, with T-bar lift; and the 800-foot school slope, with rope tow. Flanking side trails, about 2,000 feet long, depend on natural snow. The visitors' center has a wood fire in the lounge, a snack bar, and a shop which rents and sells skiing equipment. Expert instruction is available.

NATURE EDUCATION: Public nature walks and programs are scheduled here May-October. Ecology courses are offered in summer. Special programs are arranged for groups. A small nature museum is open daily in summer.

3. SADDLE RIDGE HORSEBACK RIDING AREA

Shadow Ridge Road, Franklin Lakes (Off Pulis Avenue)

There are horses for hire at this riding area high on Campgaw Mountain. Riding instruction is available. Horse owners may purchase passes entitling

them to use the paddocks and the wooded bridle trail. Plans call for adapting radar towers on the site for astronomy observation, bird watching etc.

4. DARLINGTON COUNTY PARK

Darlington Avenue, Mahwah

There is swimming in two of the three lakes on this rolling site in foothills of the Ramapo Mountains. The third lake affords fishing and rental boating. There is an entrance fee during the swimming season, Memorial Day weekend-Labor Day. The park has sand beaches, picnic groves, a field-house with snack bar and open terraces, pavilions, children's playground, and courts for tennis, handball, shuffleboard, basketball, and horseshoe pitching.

The park is closed December 1 - March 31.

5. DARLINGTON BERGEN COUNTY GOLF COURSE

Campgaw Road, Mahwah

This 18-hole course is under construction.

6. BERGEN COUNTY PARK COMMISSION WILDLIFE CENTER

Crescent Avenue, Wyckoff

Visitors can see and learn about wildlife of this area's natural habitat. The exhibit hall, which overlooks the waterfowl pond, has a meeting room and a browsing library. Naturalists are in attendance.

Outside there are shelters for live animals and birds and a 2/3-mile nature walk. A printed trail guide is available from the naturalist.

The center offers public programs and classes and also schedules special programs for school groups and for organizations.

Free public programs are presented on weekends January-April and September-November, on Tuesdays at 2 P.M. January-November. A printed program schedule is available. There are picnic tables on the hill.

There is a shaded garden featuring rhododendron beside the park drive, and 25,000 daffodils dot the hillside.

7. WOOD DALE COUNTY PARK

Prospect Avenue, Woodcliff Lake

The pond is the main attraction at this family recreation area. In winter the pond is a popular ice skating area. In other seasons young people fish and sail model boats at the pond, and feed the ducks.

The park has free tennis courts, picnic facilities, and a children's playground.

Lights will be installed at the tennis courts.

8. BAYLOR MASSACRE BURIAL SITE
Red Oak Drive, River Vale
(Off River Vale Road)

Visitors to this shaded wayside historical park may read markers telling of the Sept. 28, 1778 Baylor Massacre and may see the millstone which long ago covered the burial place on this site. Victims whose remains were uncovered here in August, 1967 were members of a detail in Col. George Baylor's Continental Army Calvary regiment. Fifteen dragoons died of wounds inflicted in a 2 A.M. British ambush.

9. ROCKLEIGH BERGEN COUNTY GOLF COURSE
Paris Avenue, Rockleigh

Lines form early at this 27-hole rolling course at the base of the Palisades' western slope. The stone fieldhouse has a snack bar and pro shop. Golf cars and carts are available for rental.

10. PASCACK BROOK COUNTY PARK
Emerson Road, Westwood

A picnic grove overlooks the fishing pond. The park has three free tennis courts with lights, a practice backstop, a children's playground, and two ball fields.

11. SADDLE RIVER COUNTY PARK

This linear park will eventually flank Saddle River for 5½ miles, and will have scenic drives and paths. The park has five recreational areas, and additional facilities are under development.

a. Wild Duck Pond Area
East Ridgewood Avenue
Ridgewood

Ducks abound on the pond, which is a popular center for ice skating and fishing as well as for duck feeding.

The park area has extensive picnic facilities, a large children's playground, and shuffleboard and horseshoe courts. A recreation room is available for scheduled meetings.

b. Glen Rock Area
Alan Avenue, just east of
Prospect Street

Here too the pond is the focal point, affording duck feeding, fishing, and model boat sailing. The area has picnic facilities, a children's playground, free tennis courts, and a rink which is flooded in winter for ice skating.

c. Dunkerhook Area
Dunkerhook Road, Paramus

The cool shade of wooded picnic areas is especially welcome on a hot day.

Ducks in the area's winding stream look for handouts from park visitors. The area has a children's playground and horseshoe courts.

d. Saddle Brook Area
Saddle River Road

Picnic groves and a fishing lake are the most popular attractions. Model sailboat regattas may sometimes be seen on the lake. Duck feeding is a favorite pastime. There is a bicycle and pedestrian path around the lake, and another path follows the Saddle River south from the lake for a mile.

The area has a children's playground and facilities for baseball, football, ice skating, and horseshoe pitching.

e. Rochelle Park Area
Railroad Avenue

There are picnic tables along the 1-mile streamside park drive. Other facilities are free tennis courts, a children's playground, and a natural-ice skating rink.

Tower Restoration, Arcola, Paramus

THE TOWER and paddle wheel, focal points of the famed Easton gardens, were reconstructed above the ruins of the original complex built circa 1900 near the site of the historic 1745 Red Mill. The reconstructed landmark may be seen from Saddle River and Paramus Roads south of Route 4.

A BICYCLE-PEDESTRIAN trail about 3 miles long starts at Williams and Union Streets, Fair Lawn, follows the stream, cuts through Dunkerhook Area and continues to the Glen Rock Area.

THREE TENNIS COURTS to be built in Fair Lawn are in the design stage.

12. ORCHARD HILLS
BERGEN COUNTY GOLF COURSE
Paramus Road, Paramus

Mature trees and shrubs grace this nine-hole course on Bergen Community College property. The Park Commission renovated the course and is operating it under contract with the College.

The course may be played twice per greens fee.

The golf house has food vending machines and a small pro shop.

13. VAN SAUN COUNTY PARK
Entrances on Forest and Continental
Avenues, Paramus and Howland
Avenue, River Edge

This is our most popular and most complete County park. The children's zoo and children's railroad are perhaps the best known features. The train tracks form a loop around the zoo, a walk-through aviary and an 1860s farmyard scene.

A 12-court tennis center, a 6-acre lake which affords fishing and ice skating, picnic groves, a large children's playground, and a shaded garden around historic Washington Spring are among other features of the park. Park facilities include a snack shop, a bicycle path, shuffleboard and horseshoe courts, sledding slopes, ball fields, and an open play area.

Free tennis clinics are conducted all summer for registered residents aged 8-17.

The Park Commission sponsors an outdoor art show here annually, in late summer. Entry forms may be obtained from the Commission office.

14. OVERPECK COUNTY PARK

This 813-acre meadowland site is being developed gradually as Bergen County's central park with a variety of recreation facilities. Excavation of a 37-acre lake north of Fort Lee Road has been completed, and a 120-acre lake is being excavated to the south. Plans call for picnic areas and landscaped paths around the lakes.

Current facilities include:

a. Overpeck Bergen County Golf Course

East Cedar Lane, Teaneck

There are two ponds, two lagoons, and an 8-acre lake on this 18-hole course. The contemporary redwood golf house contains a lounge, snack bar, deck, and pro shop.

b. Leonia North Area
Fort Lee Road

There is a 1¼-mile figure-8 bicycle-pedestrian path beside the 37-acre lake. Sodded baseball and football fields have been constructed. Sitework is underway for the drive and parking area. A field house and tennis courts are planned.

c. Leonia South Area
Fort Lee Road

A horseback riding center is under construction. There will be paddocks, an indoor riding arena, a bridge trail, and open pastures.



RIVERSIDE Park South children's railroad patrons ride in open coaches.

Plans call for adding a pony ring and children's playground. The area now has picnic tables and a rink which is flooded in winter for ice skating. A wildlife refuge adjoins the area.

d. Palisades Park Area

Roosevelt Street, off Grand Avenue
 Sports facilities in this section are four free tennis courts, with lights and practice backstop, and sodded baseball and football fields with bleachers. There is a fieldhouse.

15. COUNTY PARKS IN GARFIELD

Dahnert's Lake
Midland Avenue

The pond is the center of activity. It affords ice skating, duck feeding, fishing, and model boat sailing. The park has picnic facilities and a children's playground.

Belmont Hill
Botany Street

A hilltop rose garden containing more than 55 rose varieties attracts many visitors in June and early fall. The park also has a scenic lookout, children's play equipment, and picnic tables.

16. WALLINGTON COUNTY PARK
Rose Street, Off Paterson Avenue
Wallington

The pond is used for ice skating,

fishing, and model boat sailing. Sledding slopes make this an all-season park. It has baseball, football and picnicking facilities, free tennis courts, and a children's playground.

17. RIVERSIDE COUNTY PARK

Both the North and South Areas of this southwest Bergen park are on the Passaic River.

a. North Area

Riverside Avenue, Lyndhurst

Picnicking is popular here. Free tennis courts with lights, horseshoe courts, and a children's playground are among the area's facilities. One of the ball fields has lights and a fieldhouse. There is a play rink which is flooded in winter for ice skating.

b. South Area

River Road, North Arlington

The children's railroad, which operates on weekends and holidays April-October, and a wild west playground are the youngsters' favorite features here. The park area also has three free tennis courts with practice backstop and lights, picnic facilities, ball fields, a rink which is flooded in winter for ice skating, and horseshoe courts.



Bergen County Park Commission Annual Report, 1974