

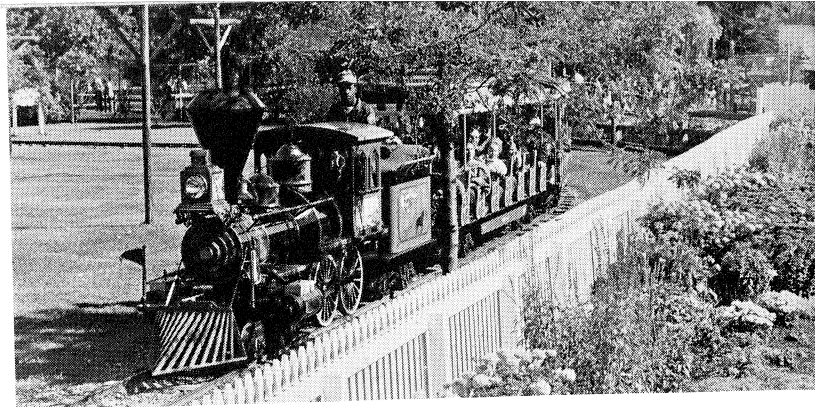
Bergen County Park Commission



Annual Report, 1973



DAYS OF YORE are recalled at Van Saun Park. At left, visitors look at antiques in the carriage shed near a replica of a Bergen farmhouse of the mid-1800s. At right, the miniature 1866 train replica passes old-fashioned gardens of the farmhouse scene. Antique farm equipment is displayed between the farmyard and the depot.



COVER PICTURE: These courts at Pascack Brook Park are among 14 county park courts opened in 1973 in response to the great upsurge in tennis popularity.

Photo by Kent Fulcher

BERGEN COUNTY PARK COMMISSION, 1973 Hackensack, New Jersey

Otto C. Pehle, President

Peter W. Occhipinti, Vice President

Roy Woodward, Secretary

Joseph A. Carucci, Assistant Secretary

Lawrence E. Nyland

George Warchol

Mrs. Ina Albert

Wilbur J. Lotz

Henry G. Avery

James A. McFaul, Executive Director

Robert C. Hespe, Assistant County Counsel

BOARD OF CHOSEN FREEHOLDERS, 1973

Frank A. Buono, Jr., Director

Harry Randall, Jr., Deputy Director

Mrs. June M. Clark

Thomas J. Costa

Henry L. Hoebel,

Chairman, Park and
Recreation Committee

Walter Marut

Kevin J. McDermott

Kenneth W. Sherwood

Victor M. Williams

Richard L. Nelson, County Administrator

Michael J. Ferrara, County Counsel

A PICNIC TABLE becomes a card table for an impromptu game at Darlington Park.

CLIMBING is obviously fun for young visitors at the Van Saun Park Playground

The Record Photo



A Park Is Tailored To Its Site and Its Public

The making of a park is challenging, fascinating, and never-ending.

It starts with the search for a sizeable and accessible site priced within reach. Assuming such a site can be found (quite an assumption in Bergen County in the Seventies), official approval is needed.

Next comes acquisition, which can be highly complex. Saddle River County Park offers a case in point. To date the Bergen County Park Commission has acquired 172 parcels for the streamside park, and acquisition is not yet complete. Some of the parcels have had a multiplicity of far-flung owners to track down and negotiate with.

When the Park Commission acquires title to a new site, an engineering study is made and a development plan is drawn. The plan takes into account the terrain and residents' recreation needs and preferences. Many of our county park plans have included fishing ponds — for practical as well as for scenic and recreation purposes. The ponds are excavated in low marshy areas. Silt removed from the lake bed becomes fill for the surrounding land.

If possible, the site is opened to the public very quickly, though there may be only a drive and a picnic grove at first. Recreation and convenience facilities and landscaping are added by stages.

In time major development is completed, but a good park is never "finished". There is always room for improvement, and changes are made to adapt to changing needs and changing tastes.

The Bergen County Park Commission and the Board of Chosen Freeholders are ever mindful that the county parks belong to the people. Every effort is made to provide something of value for all.

Otto C. Pehle
Bergen County Park Commission President

1

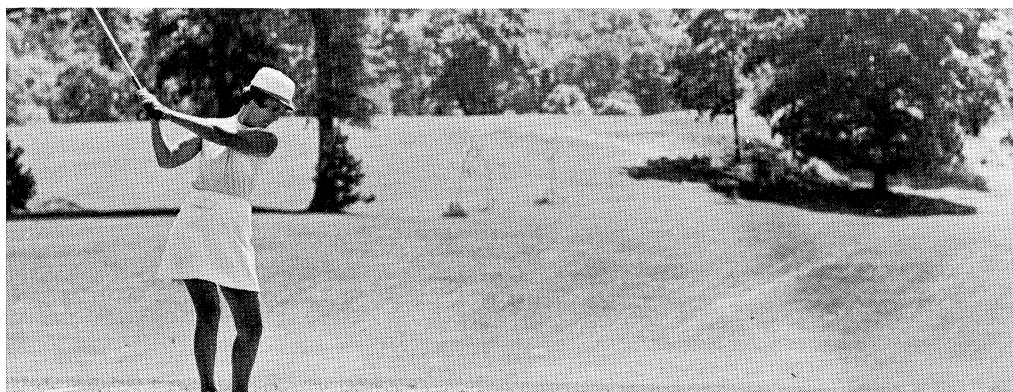


CAMPGAW slopes are lighted for night skiing. On weekdays night is the busy time.
The Record Photo

THE DEER returns Van Saun zoo visitors' stares.



A GOLFER plays on the rolling Rockleigh course.



More Courts For The Tennis Boom

With tennis soaring in popularity, the Bergen County Park Commission opened 14 admission-free courts in 1973. All got a big play right from the start.

Other facilities opened in 1973 included a streamside bicycle path, a fieldhouse, and lakeside and streamside tent camping.

NEW COURTS IN FIVE PARKS

Four of the tennis courts and the fieldhouse are in Overpeck County Park. Two of the courts and the bicycle path are in Saddle River County Park. Wallington County Park has two of the new tennis courts and a new baseball field. Pascack Brook County Park's three new courts have lights for night play. There are three new courts at Riverside County Park South. Here and at Overpeck Park there are practice backstops, and Pascack Brook Park has a new play wall which is used frequently for tennis practice.

The new courts, of sheet asphalt, will be used in all four seasons. They bring to 36 the number of tennis courts in the county park system.

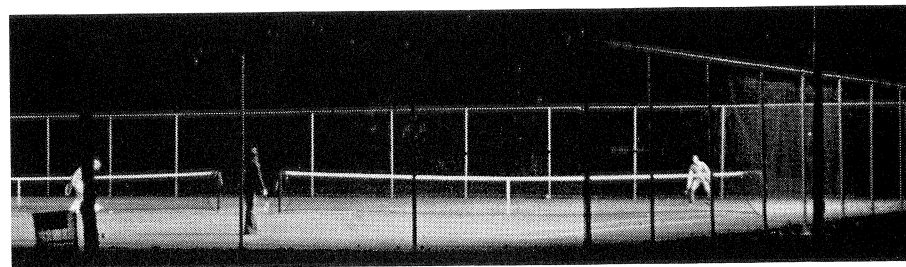
TENT CAMPING AT RAMAPO

Our new tent camping, at Ramapo Valley County Reservation, has been popular from the start — despite the requirement that visitors leave their cars in the parking area at the entrance. As the year ended, plans were being made to provide modern rest rooms and a park information office.

The lion's share of 1973 county park development was on the Overpeck Park site.

RAMAPO Valley Reservation visitors carry their camping gear (above left) and fish in a mountain pond (left).

BICYCLISTS ride on the new path beside the Saddle River.



PASCACK Brook Park has the first county park courts with lights.

Overpeck's new tennis courts and fieldhouse are in the Palisades Park section.

OVERPECK PROJECTS FURTHERED

Plans and basic sitework were completed for a horseback riding center in the Leonia section — with stable space for 40 horses, large instruction and show paddocks, a bridle trail, and open pastures. A pony ring and

children's playground are planned also. There is a wildlife refuge adjoining this recreation area, which is south of Fort Lee Road, and currently has picnic tables and a rink for natural-ice skating.

In the Leonia section north of Fort Lee Road, groundwork was completed for a 1 1/4-mile bicycle-pedestrian path, and sitework was well under way for sodded baseball and football fields with bleachers and for a bicycle path extension. Tennis courts, a fieldhouse, and open areas are also planned for this section.

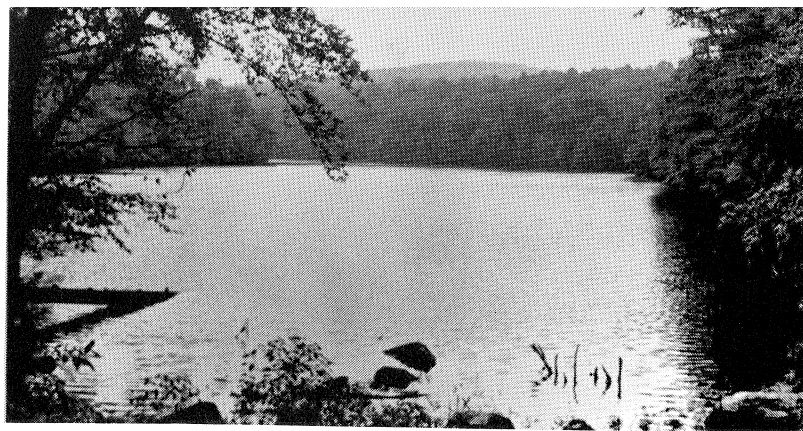
DREDGING THE BIG LAKE

Roughly a quarter of the excavation of Overpeck Park's 120-acre lake was completed in 1973. This lake is taking shape south of Fort Lee Road. The dredge had completed excavation of the park's 37-acre lake north of Fort Lee Road. In time there will be picnic areas, landscaped paths, bridle trails, and open grass areas around the lakes.

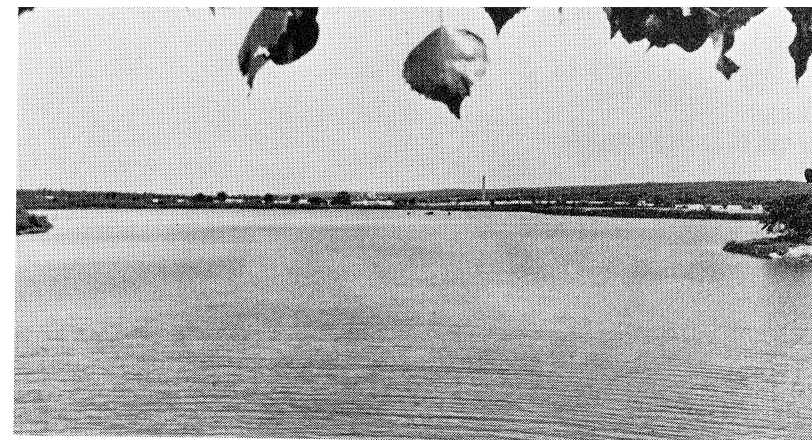
Saddle River County Park's new tennis courts are in Rochelle Park. At year end, plans



AT RIGHT is a mountain fishing pond on Silver (hiking) Trail at Ramapo Valley Reservation.



FAR RIGHT: This is Overpeck Park's new 37-acre lake. A 120-acre lake is in the making.



were drawn for eight new courts in the park's Fair Lawn section. The Park Commission awarded the contract for construction of two shelters in the area of the projected courts, which will be accessible to bicyclists and pedestrians from the Dunkerhook Area across the Saddle River. Two bridges to replace the current temporary span were in the design stage late in the year.

NEW BICYCLE PATHS

The new 1½-mile bicycle-pedestrian path along the Saddle River follows the stream from Williams and Union Streets, Fair Lawn to the Dunkerhook Area, and contracts were awarded at year end to extend the path about 3,000 feet to the Glen Rock Area.

Darlington Golf Course construction progressed in 1973. The work included excavation of ponds and streams and filling and grading of the fairways.

Plans were completed for the projected horseback riding center on former Nike Base property annexed to Campgaw Mountain County

Reservation. The Park Commission awarded contracts for radar tower demolition and for installation of a water line to the barracks buildings, which will be converted into stables.

NATURALISTS ARE BUSY

Park Commission nature education included special programs for more than 20,000 school children in 920 classes, public programs on weekends and Tuesdays, summer nature courses, and zoomobile visits. Staff naturalists utilize Campgaw and Ramapo Valley Reservations as well as at the Bergen County Park Commission Wildlife Center.

The Park Commission sponsored free tennis classes for Bergen children, open-air band concerts, and the annual art show — with a record 188 entries — and cosponsored a folk dancing and singing program, a modern dance program, and a puppet show.

During the fiscal year which ended November 30, the Park Commission turned over \$1,093,131 in revenue to the County Treasury. Rockleigh Bergen County Golf Course led with \$259,871, and Darlington County Park took in \$234,867 during the swimming season.

92,415 REGISTRANTS

Park Commission resident registrations totaled 35,481. Registration cards were issued to 92,415 residents. (Most registrations were obtained by families, and a card was issued to each eligible member of the family.) Registration entitles the holder to resident rates at Commission-operated fee facilities.

Park-use permits totaled 5,370 in 1973.

Construction projects completed during the year included a comfort station in Pascack Brook Park, a new roof on the Rockleigh Golf Course fieldhouse, expansion of the carpentry shop and maintenance yard at Van Saun Park, a storage building at Campgaw Mountain Reservation, service roads, retainer walls, cabins, and signs.

IT'S A BIG JOB

Crews installed heating and lighting equipment, improved and repaired buildings and bridges, repaired equipment, improved water ways, laid pipe, put in security and drainage systems, and installed valves and electrical connections for the new snow-making equipment.

Some of the 1973 totals give an idea of the scope of the work: Paving of 22,759 square yards of parking areas and drives, of more than 12,500 square yards of bicycle path, and of 3,690 square yards of other path; placement of 298,329 tons of sand, 43,100 cubic yards of rock, 38,317 cubic yards of fill, and 2,865 cubic yards of topsoil; erection of 8,244 feet of chain-link fencing; placement of 15,000 square feet of sod; planting of 359,480 square feet of grass and of 318 trees and 250 shrubs apart from Wildlife Center planting.

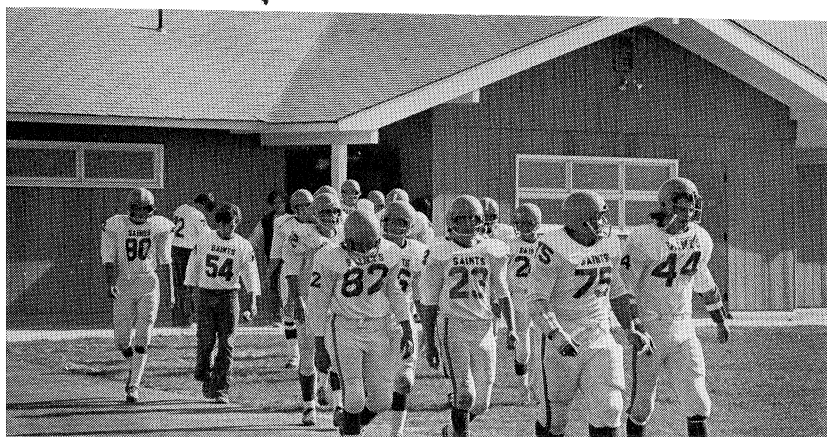
GARDEN EXPANDED

The woodland garden adjacent to the Wildlife Center drive was expanded, and planting continued throughout this park site. Belmont Hill Park added a new 20-table picnic area overlooking the rose garden.

Equipment purchased in 1973 included a \$24,890 excavator, a \$24,500 snow-making machine for the ski center, a \$20,468 truck tractor and nine other tractors; a \$12,630 back hoe with bucket, an \$11,250 wide-track bulldozer, and four dump trucks.

FOOTBALL players leave the new fieldhouse in Overpeck Park's Palisades Park Area. The building is accessible to the tennis courts as well as the Athletic fields.

SQUARE DANCING for all followed a folk dancing and singing performance at Van Saun Park.



Nature Beckons

Long before the geology hike is to start, the early birds arrive at Ramapo Valley County Reservation — eager to see and smell and walk through a place shaped by nature and not by man. Eventually, more than 150 Sunday hikers hit the trail.

Some 250 flashlights pierce the darkness on the Friday night frog walk at Campgaw Mountain County Reservation.

Even the standing room is all taken for the cave exploration slide program at the Bergen County Park Commission Wildlife Center.

On an autumn weekend colorful tents ring the lower lake at Ramapo Reservation, where vehicles are barred and campers cheerfully lug their gear. Boy Scouts pitch their tents in the snow at Campgaw.

Residents of densely developed Bergen County are hungry for a chance to get back to nature. They brave icy roads and gasoline shortages to pay their Sunday visit to the Wildlife Center with its waterfowl pond, woodland trail, wild deer, live-animal shelters, and the main building where there are live snakes and frogs and bees as well as natural science exhibits, a browsing nature library, and the big window-walled area overlooking the pond.

The Park Commission schedules free public nature programs on weekends and Tuesday afternoons. From fall through early spring most of the programs are at the Wildlife Center. The

focus shifts to Campgaw and Ramapo Valley Reservations for the warmer months, when guided nature hikes predominate.

Naturalists present special programs for school classes and organizations at the Wildlife Center and at both reservations. In 1973 programs were presented for more than 20,000 children in 920 classes. Free summer nature classes are conducted at the Wildlife Center and at Campgaw. The Park Commission showmobile was utilized in 1973 for nature classes and exhibits at park areas in southern and central Bergen.

Sketch maps of nature trails at the two reservations are in such great demand that it is hard to keep them in stock. At the Campgaw visitors' center an information office is maintained and there is a small nature museum on the lower level. Campgaw has a woodland bridge trail. A horseback riding center is being added.

The children's zoo and walk-through aviary at Van Saun County Park on Forest Avenue, Paramus are always crowded on pleasant weekends and vacation days. Pleasant weather brings out heavy traffic on pondside and streamside pedestrian and bicycle paths throughout the park system. Fishing and duck feeding are other popular passive recreation activities in the county parks.

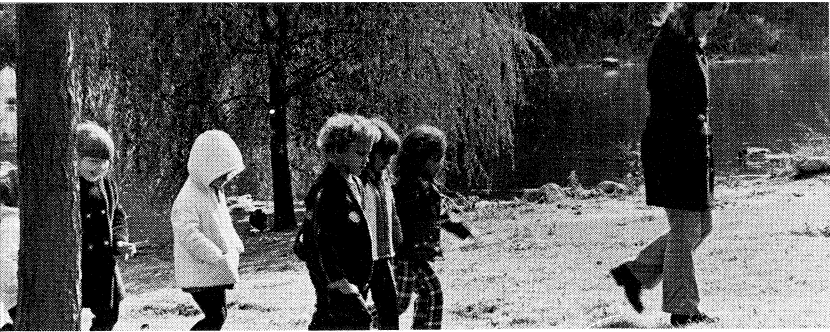
Shaded picnic tables have always been No. 1 in popularity. There are picnic facilities in 17 county park areas.

A TOUR of the nature walk is enjoyed by Wildlife Center visitors. The printed trail guide may be obtained on request at the exhibit hall.

PICNICKING under the trees has always been No. 1 in popularity with our park visitors.

THE WOODED camping area at Campgaw Mountain Reservation seems remote indeed from the speed and noise and exhaust fumes of Route 17, just minutes away.

DUCKS share Dahner's Lake with the young fishermen in this tranquil scene.



YOUNGSTERS on a guided tour walk beside the Wildlife Center waterfowl pond.



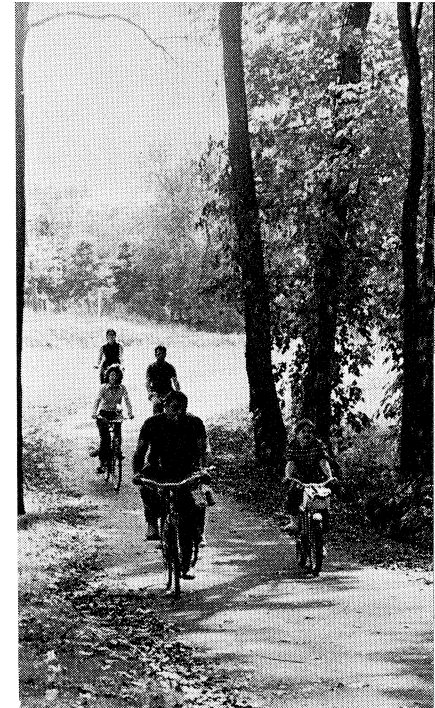
ZOOMOBILE visitors met animals from the Wildlife Center and the Van Saun Park children's zoo.



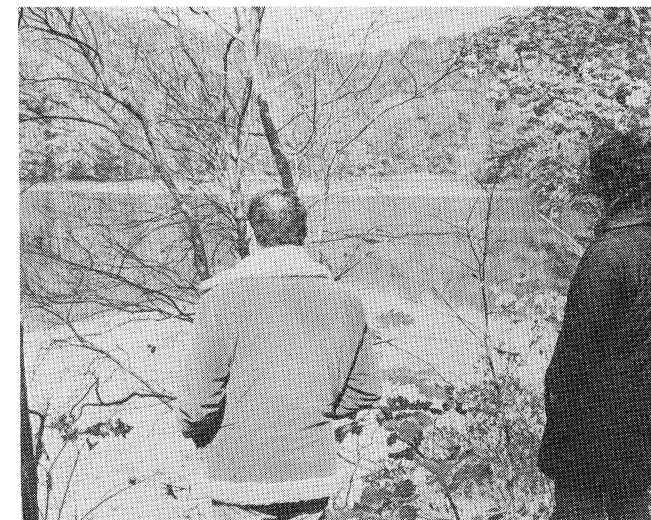
BINOCULARS are focused on the waterfowl pond outside the window wall.



A GIRL and a raccoon eye one another at the Wildlife Center.



THE PEDALING is peaceful at Dunkerhook Area.



A WEATHER reading is recorded at Campgaw by ecology class members.

HIKERS explore Ramapo Valley Reservation. The ranger has sketch maps of the trails.





TIME OUT for laughter on the sledding slopes.

COUNTY PARK ACREAGE

BERGEN COUNTY PARK COMMISSION

PARK	MUNICIPALITY	ACREAGE
Darlington County Park	Mahwah & Ramsey 136 87.73	223.73
Campgaw Mt. County Reservation	Mahwah, Oakland, & Franklin Lakes 1056.42 189.12 105.56	1351.10
Bergen County Wildlife Center	Wyckoff	81.34
Wood Dale County Park	Woodcliff Lk., Hillsdale & Park Ridge 55.01 52.72 9.82	117.55
Rockleigh Bergen County Golf Course	Rockleigh, Norwood, & Northvale 164.12 87.83 9.93	261.88
Pascack Brook County Park	Westwood, River Vale 117.71 19.63	
a) Pascack Brook Area	Westwood	140.13
b) Overbrook Minipark	2.79	
The Baylor Massacre County Park	River Vale	2.00
Saddle River County Park		
a) Wild Duck Pond Area	Ridgewood 81.98	
b) Glen Rock Area	Glen Rock 64.31	
c) Dunkerhook Area	Paramus 171.60	
d) Saddle Brook Area	Saddle Brook 79.87	
e) Rochelle Park Area	Rochelle Park 84.12	
f) Fair Lawn Area	Fair Lawn 93.81	
		575.69
Van Saun County Park	Paramus & River Edge 53.32 86.40	139.72
County Parks in Garfield	Dahnert's Lake & Belmont Hill 9.53 9	18.53
Overpeck County Park	Englewood, Leonia, Teaneck 7.71 168.31 471.93	
	Ridgefield, Ridgefield Pk. & Palisades Pk. 1.31 100.57 63.60	813.43
Undeveloped County Park Area	River Edge (Hackensack River)	.08
Wallington County Park	Wallington	22.99
Riverside County Park		
a) North Area	Lyndhurst - 76.46	
b) South Area	No. Arlington - 32.06	108.52
Undeveloped County Park Area	Alpine	190.55
Ramapo Valley County Reservation	Mahwah	624.21
		4,671.45

REPORT OF PARTICIPATING FUNDS RECEIVED FROM ASSISTANCE PROGRAMS

LAND ACQUISITION

December 31st, 1973

Date	Project	Town	Acreage				
1) 12/13/62	Land for 9-hole addition to Rockleigh Golf Course	Norwood	86.80	\$ 260,000.00	State Green Acres	\$ 130,000.00	
2) 3/18/63	Open space reserve	Alpine	93.10	400,000.00	State Green Acres	200,000.00	
3) 4/26/63	Wildlife Center site	Wyckoff	81.35	400,000.00	State Green Acres	200,000.00	
4) 1/15/64	Open space reserve	Alpine	97.45	310,000.00	State Green Acres	155,000.00	
5) 2/ 9/65	Additional Saddle River Park property	Paramus	3.63	50,250.00	State Green Acres	25,125.00	
6) 3/17/65)	Darlington Park site	Mahwah, Ramsey	178.26	1,150,000.00	State Green Acres \$575,000.00		
8/ 2/65)	Darlington Park site	" "	—		(HUD) U.S. Housing & Home Fin. 764,068.00 Agcy. \$189,068.00		
7) 6/15/67)	Addition to Camp- gaw Reservation	Mahwah	59.75	137,418.00	State Green Acres \$ 68,709.00		
6/ 9/69)	Addition to Camp- gaw Reservation	"	—		U.S. "HUD" 137,418.00 \$ 68,709.00		
8) 10/ 2/72)	Ramapo Valley Reservation site	Mahwah	624.21	1,560,527.50	State Green Acres \$780,263.00		
3/12/73)	Ramapo Valley Reservation site	"	—		U.S. "BOR" 1,560,526.75 \$780,263.75		
9) 1/11/68	Overpeck Park tidal lands	Teaneck, Leonia, * Englewood, Pal. Pk., Ridgefield Park	399.29	400,000.00	State Green Acres	200,000.00	
			1,623.84	\$4,668,195.50			\$3,372,137.75

IMPROVEMENTS

10) 6/27/68	Improvements at Wildlife Center	Wyckoff	(81.35)	\$ 297,136.18	U.S. "BOR" \$ 148,568.09
				\$4,965,331.68	**\$3,520,705.84

Prepared by R. M. Hirsh: rp

* While the County of Bergen was the owner in fee of these lands, the State of New Jersey, through extensive negotiations with the County, established its claim that this property (399.29 acres of a total of 813.43 acres in the Overpeck Area) was tidal land and as such was the property of the State. After receiving in payment from the County a fee of \$1,000.00 an acre — totalling \$400,000, the State granted the County a Riparian Grant. Subsequently the State, through the Green Acres Assistance Program, reimbursed the County half the cost (\$200,000) of this Riparian Grant.

** It is interesting to note that the County, through the Bergen County Park Commission, has received from the various State and Government Agencies, 71% of the total cost of the above 10 projects.

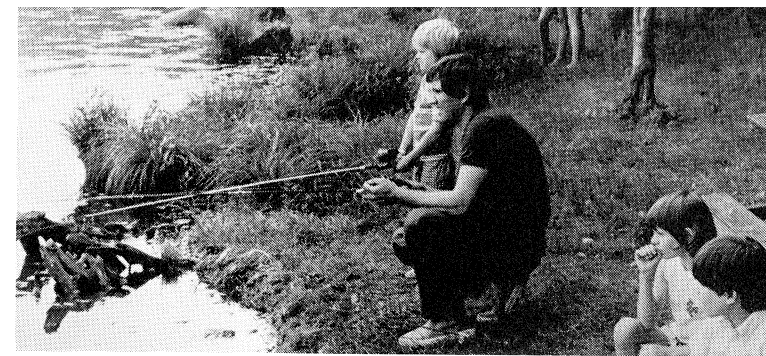
SUMMARY

Total contributed by State Green Acres Assistance Program	\$2,334,097.00
Total contributed by U.S. Government Agencies	1,186,608.84
	\$3,520,705.84

**CONDENSED STATEMENT OF PROPERTIES
COMMITTED OR ACQUIRED FOR PARK PURPOSES
COMBINED BOND, BUDGET, AND OTHER CAPITAL FUNDS**

Close of December 31, 1973

AREA	SUB-TOTAL		TOTALS	
	Acreage	Cost	Acreage	Cost
OVERPECK CREEK				
Private properties purchased	100.79	\$458,874.00		
Municipal properties donated or committed	712.64			
State Tidal Lands purchased		400,000.00		
			813.43	\$858,874.00
PASSAIC RIVER				
Private properties purchased	49.86	121,320.00		
Private properties donated	0.07	1.00		
Municipal properties donated or committed	81.58			
			131.51	121,321.00
SADDLE RIVER				
Private properties purchased	499.07	619,005.00		
Private properties donated	10.01	1.00		
Municipal properties donated	66.61	3,000.00		
			575.69	622,006.00
SOUTHWEST BERGEN				
Private properties purchased		2,200.00		
Municipal properties donated	18.53	2.00		
			18.53	2,202.00
VAN SAUN				
Private properties purchased or committed	138.33	204,709.73		
Private properties donated	1.39			
			139.72	204,709.73
NORTHWEST BERGEN				
Private properties purchased	2,227.88	4,152,259.21		
Municipal properties donated	52.50			
			2,280.38	4,152,259.21
NORTHEAST BERGEN				
Private properties purchased	438.00	1,097,806.75		
Private properties donated	14.11			
Municipal properties donated	0.32			
			452.43	1,097,806.75
PASCACK BROOK				
Private properties purchased	24.67	53,221.88		
Municipal properties donated	117.46			
			142.13	53,221.88
PASCACK VALLEY				
Private properties purchased	109.98	232,869.00		
Private properties donated	0.88			
Municipal properties donated	6.69			
			117.55	232,869.00
HACKENSACK RIVER				
Private properties purchased			0.08	10.00
ALL AREAS				
Legals, Advertising, Engineering, etc.				65,021.92
			4,671.45	7,410,301.49



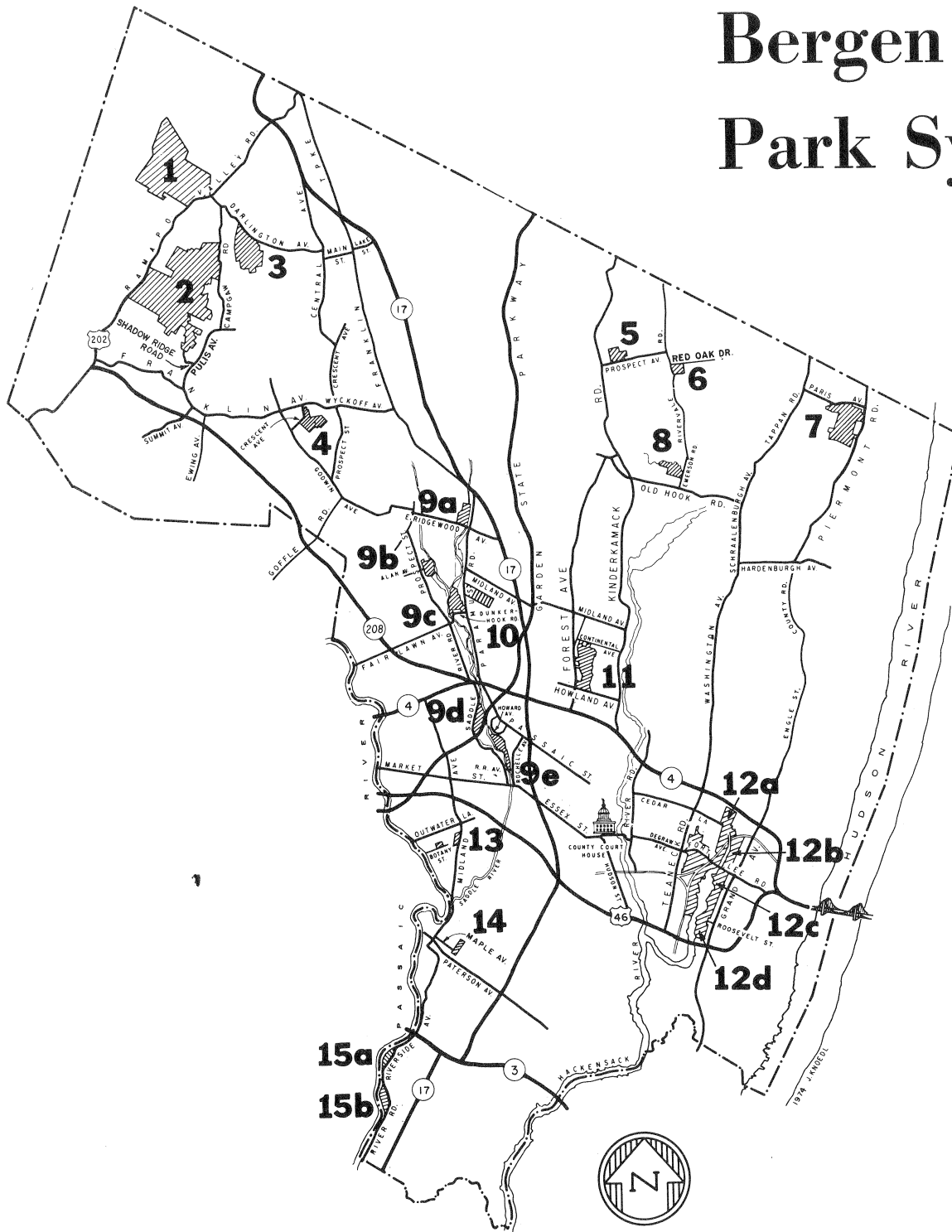
FISHERMEN come in all sizes at county parks.

**BERGEN COUNTY PARK COMMISSION
LAND ACQUISITION
SUMMARY**

SOURCE OF APPROPRIATIONS AND DISBURSEMENTS

DESCRIPTION	Acreage	Disbursements	Appropriations
APPROPRIATIONS			
Park Commission Bond Funds (as adjusted)			\$ 5,354,200.08
Miscellaneous appropriation to Bond Account Re: Land Reclamation Corp. Prop. taxes			256.98
Park Commission Budget Funds			185,859.43
State of N.J. Green Acres Assistance Program (Joint Closing Account)			1,105,000.00
Capital Funds Surplus, Re: Green Acres			170,000.00
Capital Funds Surplus (Budget)			15,932.00
Capital Funds Surplus, Re: Federal Open Space Land Program			189,068.00
Trust Account, County Parks, Re: State of N.J. Route No. 95, Overpeck above 2.93 El.			199,985.00
Trust Account, County Parks, Re: Green Acres, Overpeck, Tidal Lands			200,000.00
DISBURSEMENTS			
Private Properties Committed or Acquired			
Bond Account	3,492.51	6,766,417.46	
Budget Account	122.61	175,860.11	
Municipal Properties Committed or Acquired			
Bond Account	1,056.33	3,000.00	
Budget Account		2.00	
State Bureau of Navigation, Tidal Lands Acq. Trust Account		199,985.00	
Green Acres Account		200,000.00	
Budget Account		15.00	
Legals, Adv. Engineering, etc.			
Bond Account		55,039.60	
Budget Account		9,982.32	
Dec. 31, 1971 to Balance (Available Bond Funds on Hand)		7,410,301.49	7,420,301.49
		10,000.00	
		4,671.45	7,420,301.49

Bergen County Park System



1. RAMAPO VALLEY COUNTY RESERVATION

Ramapo Valley Road (Route 202), Mahwah

Hikers may explore the wooded hillside, with its mountain fishing pond and waterfall. Tent camping is permitted beside the Ramapo River and lower lake. Vehicles must be parked at the entrance. Canoe and raft owners have portage access to the Ramapo River.

2. CAMPGAW MOUNTAIN COUNTY RESERVATION

Campgaw Road, Mahwah

This 1,351-acre wooded park is the largest property in the County Park system. It has hiking trails, campsites (some with tent platform or adirondack shelter), picnic facilities, a 4½-mile bridle trail, and children's rustic play equipment. The visitors' center, a ski shelter in winter, is utilized for nature education in other seasons.

SKI CENTER: Machine-made snow is sprayed on the 1,500-foot main slope, with two chair lifts (one has mid-station); the 600-foot school slope, with T-bar lift; and the 800-foot school slope, with rope tow. Flanking side trails, about 2,000 feet long, depend on natural snow. The visitors' center has a wood fire in the lounge, a snack bar, and a shop which rents and sells skiing equipment. Expert instruction is available.

NATURE EDUCATION: Public nature walks and programs are scheduled here in spring and summer. Ecology courses are offered in summer. Special programs are arranged for groups. A small nature museum is open daily in summer, less often in other seasons.

HORSEBACK RIDING: Saddle Ridge riding area due to open in summer 1974. Access will be from Shadow Ridge Road, off Pulis Avenue, Franklin Lakes. There will be riding in-

struction and horses for hire. Riding center patrons will utilize the 4½-mile bridle trail which has been available to horse owners having Park Commission permits.

3. DARLINGTON COUNTY PARK

Darlington Avenue, Mahwah

There is swimming in two of the three lakes on this rolling site in foothills of the Ramapo Mountains. The third lake affords fishing and rental boating. There is an entrance fee during the swimming season, Memorial Day weekend-Labor Day. The park has sand beaches, picnic groves, a fieldhouse with snack bar and open terraces, pavilions, children's playground, and courts for tennis, handball, shuffleboard, basketball, and horseshoe pitching.

The park is closed December 1 - March 31.

4. BERGEN COUNTY WILDLIFE CENTER

Crescent Avenue, Wyckoff

Visitors can see and learn about wildlife of this area's natural habitat. The exhibit hall, which overlooks the waterfowl pond, has a meeting room and a browsing library. Naturalists are in attendance.

Outside there are shelters for live animals and birds and a 2/3-mile nature walk. A printed trail guide is available from the naturalist.

The center offers public programs and classes and also schedules special programs for school groups and for organizations.

Public programs, usually films, are presented Tuesdays at 2:10 P.M. most of the year.

There are picnic tables on the hill.

5. WOOD DALE COUNTY PARK

Prospect Avenue, Woodcliff Lake

The pond is the main attraction at this family recreation area. In winter the pond is a popular ice skating area. In other seasons young people fish and sail model boats at the pond, and feed the ducks.

The park has free tennis courts, picnic facilities, and a children's playground.

6. BAYLOR MASSACRE BURIAL SITE

Red Oak Drive, River Vale
(Off River Vale Road)

Visitors to this shaded wayside historical park may read markers telling of the Sept. 28, 1778 Baylor

Massacre and may see the millstone which long ago covered the burial place on this site. Victims whose remains were uncovered here in August, 1967, were members of a detail in Col. George Baylor's Continental Army Calvary regiment. Fifteen dragoons died of wounds inflicted in a 2 A.M. British ambush.

7. ROCKLEIGH BERGEN COUNTY GOLF COURSE

Paris Avenue, Rockleigh

Lines form early at this 27-hole rolling course at the base of the Palisades' western slope. The stone fieldhouse has a snack bar and pro shop. Golf cars and carts are available for rental.

8. PASCACK BROOK COUNTY PARK

Emerson Road, Westwood

A picnic grove overlooks the fishing pond. The park has three free tennis courts, a children's playground, and two ball fields.

9. SADDLE RIVER COUNTY PARK

This linear park will eventually flank Saddle River for 5½ miles, and will have scenic drives and paths. The park has five recreation areas, and additional facilities are under development.

a. Wild Duck Pond Area

East Ridgewood Avenue
Ridgewood

Ducks abound on the pond, which is a popular center for ice skating and fishing as well as for duck feeding.

The park area has extensive picnic facilities, a large children's playground, and shuffleboard and horseshoe courts. A recreation room is available for scheduled meetings.

b. Glen Rock Area

Alan Avenue, just east of
Prospect Street

Here too the pond is the focal point, affording duck feeding, fishing, and model boat sailing. The area has picnic facilities, a children's playground, free tennis courts, and a rink which is flooded in winter for ice skating.

c. Dunkerhook Area

Dunkerhook Road, Paramus

The cool shade of wooded picnic areas is especially welcome on a hot day.

Ducks in the area's winding

stream look for handouts from park visitors. The area has a children's playground and horseshoe courts.

d. Saddle Brook Area

Saddle River Road

Picnic groves and a fishing lake are the most popular attractions. Model sailboat regattas may sometimes be seen on the lake. Duck feeding is a favorite pastime. There is a bicycle and pedestrian path around the lake, and another path follows the Saddle River south from the lake for ¾ mile.

The area has a children's playground and facilities for baseball, football, ice skating, and horseshoe pitching.

e. Rochelle Park Area

Railroad Avenue

There are picnic tables along the 1-mile streamside park drive. Other facilities are free tennis courts, a children's playground, and a natural-ice skating rink.

Tower Restoration, Arcola, Paramus

The tower and paddle wheel, focal points of the famed Easton gardens were reconstructed above the ruins of the original complex built circa 1900 near the site of the historic 1745 Red Mill. The reconstructed landmark may be seen from Saddle River and Paramus Roads south of Route 4.

A BICYCLE-PEDESTRIAN path follows the Saddle River from Williams and Union Streets, Fair Lawn to Dunkerhook Area and is being extended to the Glen Rock Area.

10. ORCHARD HILLS BERGEN COUNTY GOLF COURSE

Paramus Road, Paramus

Mature trees and shrubs grace this nine-hole course on Bergen Community College property. The Park Commission renovated the course and is operating it under contract with the College.

The course may be played twice per greens fee. The golf house has food vending machines and a small pro shop.

11. VAN SAUN COUNTY PARK

Entrances on Forest and Continental Avenues, Paramus and Howland Avenue, River Edge

This is our most popular and most

complete County park. The children's zoo and children's railroad are perhaps the best known features. The train tracks form a loop around the zoo, a walk-through aviary and an 1860s farmyard scene.

A 12-court tennis center, a 6-acre lake which affords fishing and ice skating, picnic groves, a large children's playground, and a shaded garden around historic Washington Spring are among other features of the park. Park facilities include a snack shop, a bicycle path, shuffleboard and horseshoe courts, sledding slopes, ball fields, and an open play area.

Free tennis clinics are conducted all summer for registered residents aged 8-17.

The Park Commission sponsors an outdoor art show here annually, in late summer. Entry forms may be obtained from the Commission office.

12. OVERPECK COUNTY PARK

This 813-acre meadowland site is being developed gradually as Bergen County's central park with a variety of recreation facilities. Excavation of a 37-acre lake north of Fort Lee Road has been completed, and a 120-acre lake is being excavated to the south. Plans call for picnic areas and landscaped paths around the lakes.

Current facilities include:

a. Overpeck Bergen County Golf Course

East Cedar Lane, Teaneck

There are two ponds, two lagoons, and an 8-acre lake on this 18-hole course. The contemporary redwood golf house contains a lounge, snack bar, deck, and pro shop.

b. Leonia North Area

Fort Lee Road

A 1¼-mile bicycle-pedestrian path is under construction, and preparation is under way for construction of sodded baseball and football fields with bleachers and for extension of the bicycle path. Tennis courts, a field house, and open areas are also planned for this section.

c. Leonia South Area

Fort Lee Road

A horseback riding center is under construction. There will be paddocks, an indoor riding arena,



DOWN THE SLIDE to make a big splash at Darlington Park.

a bridge trail, and open pastures. Plans call for adding a pony ring and children's playground. The area now has picnic tables and a rink which is flooded in winter for ice skating. A wildlife refuge adjoins the area.

d. Palisades Park Area

Roosevelt Street

Sports facilities in this sector are four free tennis courts with practice backstop and sodded baseball and football fields with bleachers. The area has a fieldhouse.

13. COUNTY PARKS IN GARFIELD

Dahnert's Lake
Midland Avenue

The pond is the center of activity. It affords ice skating, duck feeding, fishing, and model boat sailing. The park has picnic facilities and a children's playground.

Belmont Hill

Botany Street

A hilltop rose garden containing more than 55 rose varieties attracts many visitors in June and early fall. The park also has a scenic lookout, children's play equipment, and picnic tables.

14. WALLINGTON COUNTY PARK

Maple Avenue, Wallington

The pond is used for ice skating,

fishing, and model boat sailing. Sledding slopes make this an all-season park. It has baseball, football, and picnicking facilities, free tennis courts, and a children's playground.

15. RIVERSIDE COUNTY PARK

Both the North and South Areas of this southwest Bergen park are on the Passaic River.

a. North Area

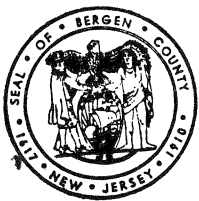
Riverside Avenue, Lyndhurst

Ball fields include one with lights for night games. Other facilities are free tennis courts, picnic tables, a rink which is flooded in winter for ice skating, a children's playground, and horseshoe courts.

b. South Area

River Road, North Arlington

The children's railroad, which operates on weekends and holidays April-October, and a wild west playground are the youngsters' favorite features here. The park area also has three free tennis courts with practice backstop, picnic facilities, ball fields, a rink which is flooded in winter for ice skating, and horseshoe courts.



Bergen County Park Commission Annual Report, 1973
