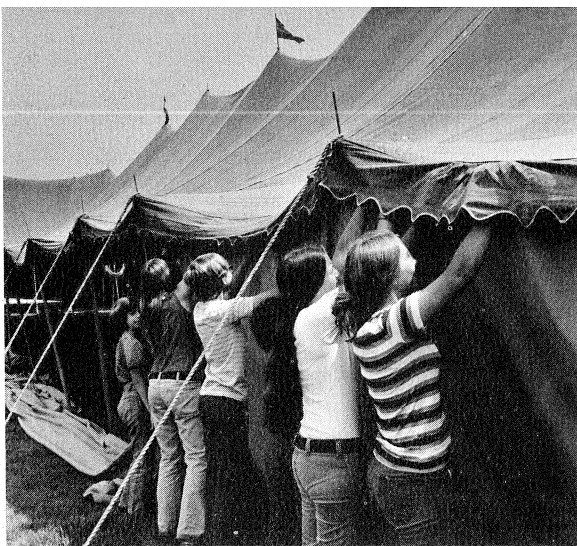




Bergen County Park Commission Annual Report, 1972

25th Anniversary Issue

The 4-H FAIR at Van Saun County Park offers a weekend of events and exhibits.



Park-use permits are issued for a variety of activities, chiefly picnicking, ball games, and camping. Pictures on this page were taken at three lively events which added color and interest to the park scene. Groups are encouraged to utilize county parks for appropriate projects which all park visitors may enjoy. (All three photographs are from The Record).

EARLY DUTCH settlers' meal preparation is re-enacted at Saddle River County Park's Dunkerhook Area.



BERGEN COUNTY PARK COMMISSION, 1972

Hackensack, New Jersey

Otto C. Pehle, *President*

Peter W. Occhipinti, *Vice President*

Roy Woodward, *Secretary*

Joseph A. Carucci, *Assistant Secretary*

Lawrence E. Nyland

George Warchol

Mrs. Ina Albert

Wilbur J. Lotz

Henry G. Avery

James A. McFaul, *Executive Director*

Robert C. Hespe, *Assistant County Counsel**

* *Appointed Assistant County Counsel April 5, 1962*

BOARD OF CHOSEN FREEHOLDERS, 1972

Victor M. Williams, *Director*

Harry Randall, Jr., *Deputy Director*

Frank A. Buono, Jr.

June M. Clark (Mrs.)

Thomas J. Costa

Henry L. Hoebel **

Walter Marut

Kevin J. McDermott

Kenneth W. Sherwood

Richard L. Nelson, *County Administrator*

Michael J. Ferrara, *County Counsel*

** *Chairman, Park and Recreation Committee*

COVER PICTURE: Ramapo Valley County Reservation, dedicated in December, is being kept largely in its natural state. Motor vehicles must be parked outside. The reservation is open for hiking and fishing, and tent camping is permitted in designated areas. (Cover by William Lincoln. Kent Fulcher and Edmund Farlie are other photographers engaged by the Park Commission.)

CIVIL WAR buffs re-enact battle scenes in the Saddle Brook Area of Saddle River County Park.

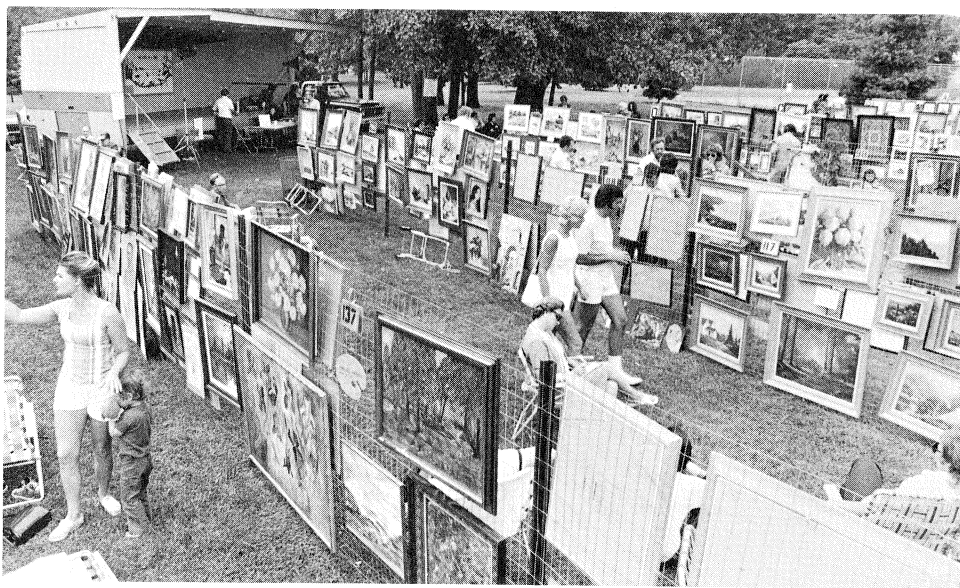




THE TRAVELING ZOO was welcomed eagerly at all stops.

The new Park Commission showmobile was utilized for the Commission's 25th anniversary program series in June, for summer nature classes in five park areas, for the August art show at Van Saun Park, for a Dixieland jazz concert September 10, and for a mobile zoo which made Sunday visits to four park areas and visited the Teaneck schools.

AT THE ART SHOW in Van Saun Park, the showmobile served as headquarters.



A Park System Takes Root

There was a good deal of open space in Bergen County 25 years ago, and many residents wondered why we needed county parks. Doubts faded as new recreation facilities opened. In today's densely developed Bergen no one questions the need for parks.

The Bergen County Park Commission, established February 5, 1947, operates a 4,669.16-acre park network with 23 recreation areas.

The county is able to offer recreation facilities not usually feasible for a suburban municipal park system, facilities such as golf courses, hiking trails, and the ski center, children's zoo, and wildlife center.

Our park system illustrates a county's opportunity to provide large parks which cross town borders, to improve water ways, and to transform swamps and flood plains into scenic and much needed recreation areas. Town boundary lines are crossed by 10 county parks. In the seven county parks on water ways there are 14 separate recreation areas.

The Commission and the Board of Freeholders are determined to maintain the high quality standards established during the park system's first quarter century and to continue expansion and development of park facilities to meet the ever-increasing need.

Otto C. Pehle
President.

CONCERTS were among events marking the Park Commission's 25th anniversary.



More Places To Go And Things To Do

Two exciting new land acquisitions made a fitting twenty-fifth anniversary present for the Bergen County park system.

New Park on the Ramapo

Dedicated in December as Ramapo Valley County Reservation, a 624-acre site in Mahwah and Ramsey has wooded hillside trails, a mountain pond, a waterfall, Ramapo River frontage, and a lower lake.

In a space-age version of beating swords into plowshares, the Park Commission plans to convert the former Nike base installation in Franklin Lakes into a horseback riding center. The 44-acre property was annexed to adjoining Campgaw Mountain County Reservation.

10 New Tennis Courts

Other park system additions in 1972 included 10 no-fee tennis courts, a new recreation area in Pascack Valley, a shaded wayside historical park commemorating the 1778 Baylor Massacre in River Vale, and a mobile unit used for cultural events in the parks and for nature education.

County parks in Southwest Bergen gained an irrigated sodded ball field and tennis courts in Wallington and at Riverside County Park South a wild west playground, three of the new tennis courts, and a tennis practice backstop. A new plastic liner insured water retention for the Riverside Park South ice skating area.

Overpeck Projects Furthered

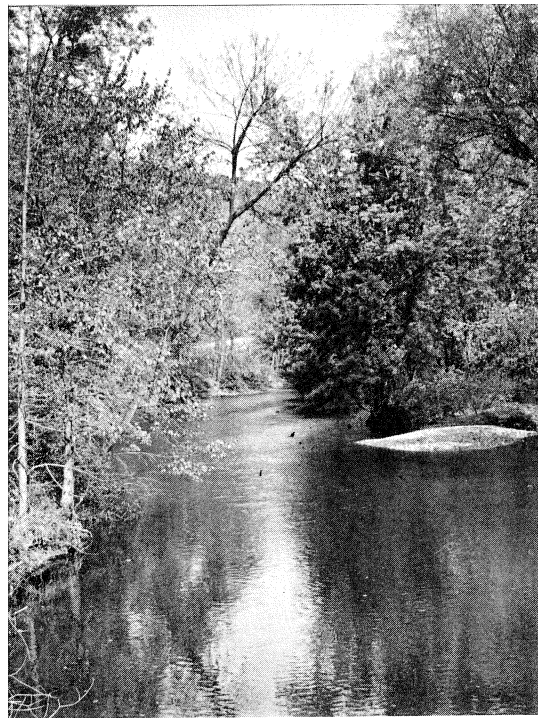
After 2 years of filling operations, grading began on a substantial portion of the Leonia acreage in Overpeck County Park. At year end the grading was about 30 per cent completed. Also in Leonia, the base course was laid for the drive from Fort Lee Road north to the site being prepared for baseball and football fields. High school students volunteers cleared away debris from the new wildlife refuge in Leonia. Plans were made for a horseback riding center and paved bicycle path on the park's Leonia portion.

The fieldhouse for the new athletic complex in Overpeck Park's Palisades Park sector was about 70 percent completed at the end of 1972, and the site for the sector's tennis courts was filled and graded.

Golf Course Designed

Projected Darlington Bergen County Golf Course was designed in 1972. The 18-hole course will be entered from Campgaw Road, Mahwah. At nearby Darlington County Park two projects were completed in 1972: the elaborate new chlorination system for the swimming lakes and the rebuilding of the four tennis courts.

Initially, Ramapo Valley Reservation is open for hiking and fishing and tent camping. Motor vehicles are barred in the interest of serenity. The park provides canoe and raft owners with portage access to the Ramapo River. Emphasis is placed on retention of the site's natural beauty. Matching State and Federal grants paid the entire \$1,570,525 purchase price. County bond funds, under the Park Commission's \$10 million debt limit, paid legal, engineering, and surveying costs.



WILDERNESS tranquility will be retained at Ramapo Valley Reservation.

TEEN-AGE volunteers cleared away debris at the new wildlife sanctuary in Overpeck County Park. Overpeck development in 1972 included extensive sitework for an athletic field complex in Leonia.

The Record Photo



RECREATION facilities added in 1972 at Pascack Brook County Park include tennis courts, a playground, and picnic tables and shelters.





A WILD WEST playground was added at Riverside County Park South.

BAYLOR MASSACRE Burial Site, a wayside historical park, opened in the fall.



Riding Center Planned

The Park Commission announced that it will convert Nike base structures into stables when it develops the projected riding center on the Franklin Lakes site. Plans call for adapting at least one radar tower for use by astronomy hobbyists and bird watchers. Riding center plans were submitted to the Federal Government with the request for the property, which can be reclaimed by the Federal Government if the need should arise.

A fishing pond, a picnic grove, a large children's playground, and three tennis courts are features of the recreation area which opened in 1972 at Pascack Brook County Park in Westwood and River Vale.

Pascack Play Area

In the course of the year the Commission erected two pavilion shelters, installed the water line and playground equipment, and constructed the tennis courts. At year end the maintenance building was nearing completion.

New tennis courts were built at the Glen Rock Area of Saddle River County Park as well as in Southwest Bergen and Pascack Valley. Glen Rock Area improvement included filling, grading, and drainage work along the Ho-Ho-Kus Brook.

A Massacre Remembered

Visitors to the Baylor Massacre Burial Site park may read markers telling of the Sept. 28, 1778 British ambush which took the lives of 15 dragoons in Col. George Baylor's Continental Army Cavalry regiment. Also on display is the millstone which long ago covered the burial place of victims whose remains were uncovered here in August, 1967.

The new mobile unit, which opens into a stage and is equipped with speakers, was utilized first for the June program series in observance of the Commission's 25th anniversary. Included were a children's ballet program, a jazz concert, a play, lectures on ecology and gardening, a nostalgia band concert, and an art show, all open to the public without charge.

Nature Study On Wheels

During the summer the showmobile was used for nature classes supplementing those at the Bergen County Wildlife Center and Campgaw Reservation, and it served as headquarters for the annual Park Commission art show at Van Saun County Park.

Its next assignment was for a traveling zoo making Sunday appearances in the parks. The animals were borrowed from the Wildlife Center and the Van Saun Park zoo.

Nature education activities — all free — included public programs, guided walks, summer classes, special programs at the Wildlife Center for 1,054 school classes having a total attendance of 20,624, and programs at Campgaw Reservation for 288 classes and groups with a total attendance of 7,974. Organizations held 97 open meetings at the Wildlife Center. These organizations were among donors of plants and equipment to the center.

Garden Enlarged

A fourth helix was added to the aeration system for the Wildlife Center's waterfowl pond, and an irrigation system was installed for the shaded garden within the park drive circle. Rhododendron, azaleas, hemlocks, and pines were among plants added to the park site. An addition to the daffodil planting brought the bulb total to 23,000.

Construction projects of the year included a maintenance buildings in Saddle River County Park's Rochelle Park Area and in Pascack Brook Park, storage buildings at Van Saun Park and Campgaw Reservation, assorted bridges, paving at 11 county park areas, and storm drain and septic system installations in addition to the major projects previously mentioned.

Planting on a Major Scale

Park Commission landscaping crews planted 422 trees and 920 shrubs in county parks in 1972. The naturalistic planting at Baylor Massacre Burial Site was a major project.

Throughout the park system, Commission crews installed playground equipment, benches, and picnic tables, took care of painting and repairing and replacing as required, and made and installed signs of all types.

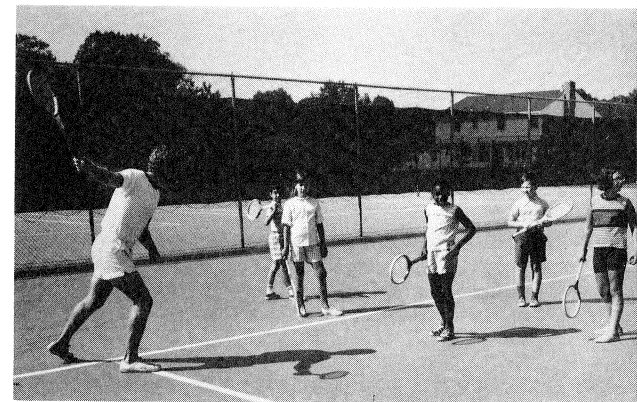
Equipment purchased included eight trucks, a station wagon, and, for the golf courses, a motorized gang mower, spiker, seeder, and spreader. Registration cards entitling the holder to resident rates were issued to 94,748 persons, and 5,021 park-use permits were issued.

Open For Questions

In April the Park Commission approved year-round daily staffing of the visitors' center at Campgaw Mountain Reservation. Visitors may obtain information at the upper-level office.

The Park Commission extended the half-rate policy for Bergen senior citizens to all Commission-operated fee facilities except the children's railroad. Tuesday afternoon nature programs were scheduled especially for the convenience of senior citizens.

Free tennis clinics were conducted all summer at Van Saun Park for Bergen children having Park Commission registration.



TENNIS clinics help budding players. Ten courts were built in county parks in 1972.



NATURE CLASSES were conducted by Park Commission naturalists at seven County Parks.

22 Park Sites Opened In 25 Years

In the early days of the Park Commission, municipalities were asked to donate or grant properties to the county. Some 1,200 acres were donated and the park system was born.

(The lion's share of this donated land was in the Overpeck County Park site. The State later claimed title to a considerable part of the site, judging it to be tidal land, and the county purchased this portion in a complicated negotiated settlement of differences relating to title and highway encroachment.)

The Commission began buying parkland when the county's land boom was just beginning to swing into high gear. By the end of the Commission's first quarter century, most of the few remaining park-sized properties were priced out of reach. (In 1951 the Commission was paying an average of \$449.55 an acre. Ramapo Valley County Reservation, purchased in 1972, was a rare find at \$2,500 an acre.)

The State Green Acres Program of the 1960s was a bonanza for the county park system. The State paid half the purchase price of Darlington County Park and of tracts in Wyckoff, Alpine, and Norwood. Green Acres funds also figures in the Overpeck settlement.

By February 5, 1972, the 25th anniversary of the Commission's organization meeting, the Park Commission had opened 22 separate recreation areas and had provided facilities for 17 sports as well as the Wildlife Center, children's zoo, children's railroads, picnic groves, campsites, and children's playgrounds.

Below is a chronology for the park system's first 25 years:

1947: Freeholders appointed initial (5-member) Commission Jan. 22. Organization meeting Feb. 5. Park studies made. Needs surveyed. Proposals included acquisition of 5,000 acres. (Creation of the Park Commission had been approved by voters in November, 1946).

1948: Major park sites selected. Decisions favored parks along waterways, particularly the Saddle River, Overpeck Creek, and the Passaic River. Land grants requested from municipalities.

1949: First land grants received from municipalities.

1950: Belmont Hill County Park construction under way. Saddle River flood control was begun in cooperation with Mosquito Extermination Commission.

1951: Land acquisition continued. Purchased lands cost an average of \$449.55 per acre. The expenditure was \$495,322. The bonding limit was \$1 million.

1952: County park sites in Ridgewood, Lyndhurst, Lodi, Garfield,, and River Edge opened to public. Initial facilities were play areas, ballfields, and picnic areas.

1953: Extensive sitework was begun in the Saddle River area. Park area created from swampland in Saddle River Township (now Saddle Brook). Van Saun County Park bridle trail rebuilt.

1954: Lake completed in Saddle River Township (now Saddle Brook) recreation area. Land purchases in six areas totaled 162.27 acres, at a cost of \$137,655. Recreation area opened in Leonia. Park facilities readied in Lyndhurst and North Arlington.

1955: Bonding limit raised from \$1 million to \$3 million. Ballfield, picnic, and playground facilities expanded. Land acquisition furthered.

1956: Paddock was built and children's zoo construction was begun at Van Saun Park. Wallington Park construction under way. Park Commission increased to nine members (from five).

1957: Rockleigh County Golf Course construction under way. Ice skating areas installed lights for skating.

1958: Rockleigh Golf Course opened. Tree nursery started at Campgaw Mountain County Reservation.

1959: Convenience facilities added and improved in several areas. Survey showed residents gave top priority to picnic facilities.

BEFORE this Wyckoff property became part of the county park system, it was a pig farm (top photo). The Bergen County Wildlife Center, which opened in 1967, has a waterfowl pond, nature trail, and animal shelters as well as the exhibit hall (lower photo). Gardens are being developed gradually within the park drive circle.

Then and Now

In 1950 the Park Commission had nine employees. In 1972 there were 260 permanent employees, plus extra summer and ski season help.

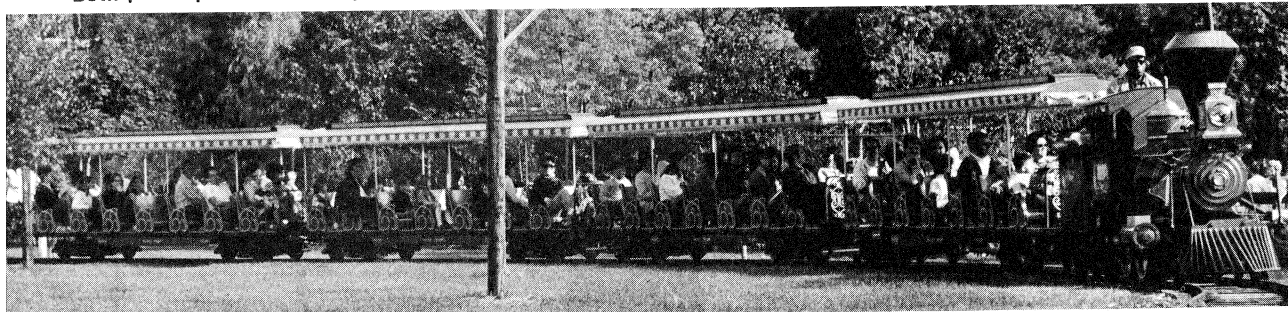
In 1950 the Park Commission had two vehicles, a station wagon and a jeep. The current count is 226 ride-on vehicles, including bulldozers, cranes, snow tractors, trucks of all sizes, many mowers, and 3-wheeled patrol cars.

Budget appropriations totaled \$100,000 in 1960, \$3,309,361 in 1972. (In 1972 the Park Commission returned \$989,758 in fees to the County Treasury.)

TRAIN RIDES delight youngsters at Van Saun County Park and Riverside County Park South. Both parks opened in the early 1950s.



THE CHILDREN'S ZOO and tennis center at Van Saun Park opened in 1960.



ROLL CALL

The Park Commission's nine members are appointed by the Bergen County Board of Freeholders. A full term on the Commission is 5 years long.

Operating funds for the park system are appropriated by the Board of Freeholders, and revenue from County Park fee facilities goes to the County Treasury.

For capital improvements and land acquisition, the Park Commission utilizes bond funds, subject to Freeholder approval, and any State or Federal grants which can be obtained.

There is no salary for the commissioners; yet appointments to the Commission are coveted. Below is a list of all the commissioners who served during the park system's first 25 years:

*A. Thornton Bishop	1/22/47 - 10/2/58
Ira H. Davey	1/22/47 - 3/30/57
Edith A. Kellers	1/22/47 - 12/17/47
* Frank Osmer	1/22/47 - 4/14/50
Edgar I. Williams	1/22/47 - 4/6/49
William J. Alford	12/17/47 - 3/2/49
Harold M. Davison	3/2/49 - 1/22/65
William Staubach	4/6/49 - 8/3/68
Chester A. Smeltzer	4/14/50 - 11/14/51
Emil Geering	2/6/52 - 1/22/57
Marion Higgins	10/24/56 - 9/6/59
Alvin G. Yhlen	10/24/56 - 10/31/61
* Harold J. Hollenbeck	5/16/56 - 1/22/67
George L. Kingslow, M.D.	8/15/56 - 1/22/68
Walter Marut	3/6/57 - 11/26/58
Arthur Seward	3/20/57 - 2/21/60
Mrs. Stewart F. Alexander	7/1/59 - 5/18/60
Alfred S. Walden	7/1/59 - 5/18/60
Peter Moraites	3/16/60 - 6/21/61
* Rudolph A. Travers	3/16/60 - 1/22/66
George M. Gillette, Jr.	6/21/61 - 1/22/67
*Bernard H. Johnson	5/3/61 - 1/22/70
*Otto C. Pehle	12/20/61 - 1/22/74
*Peter J. Russo	6/21/61 - 1/22/68
*Frederick E. Wendel	1/20/65 - 1/24/72
Edward H. Ihnen	2/2/66 - 12/12/67
Richard Norman	2/1/67 - 1/22/72
Frank P. Quintano	3/1/67 - 1/22/72
Roy Woodward	12/20/67 - 1/22/76
Gilbert E. Busch	2/7/68 - 8/12/68
George Warchol	2/7/68 - 1/22/78
James P. Miller	1/1/69 - 9/13/71
Lawrence E. Nyland	1/1/69 - 1/22/74
Mrs. Ina Albert	2/4/70 - 1/22/75

First of the new era:

Henry G. Avery	2/16/72 - 1/22/75
Joseph A. Carucci	1/19/72 - 1/22/77
Wilbur J. Lotz	1/19/72 - 1/22/78
Peter W. Occhipinti	1/19/72 - 1/22/77

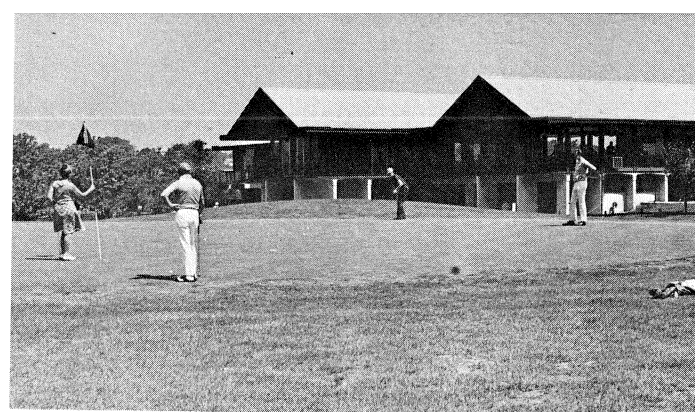
Executive Director

Stuart D. Currier	January 1949 - October 1951
Clifford Mische	January 7, 1952 - March 1, 1959
James A. McFaul	February 17, 1960 -

* His service included the Commission presidency:
NOTE: When the second date is in the future, it is the expiration date of the current term.



REFUSE, compacted by hydraulic fill, lies beneath Overpeck Bergen County Golf Course. (Before and after photos above.) The golf course was the first major recreation facility developed on the marshy Overpeck County Park site.



1960: Children's zoo and 12-court tennis center opened in Van Saun Park. Wild Duck Pond dredged and reshaped.

1961: Campgaw Mountain Reservation and the Dunkerhook park area opened. Ballfields opened at Pascack Brook County Park site. New County park recreation facilities included shuffleboard and horseshoe courts, campsites, and hiking trails.

1962: State Green Acres matching funds approved for purchase of property in Alpine and Norwood. Lakes excavated at Van Saun and Wood Dale County park sites. Shaded garden planted around historic Washington Spring in Van Saun Park. Park system added ballfields, ice skating areas, and shuffleboard courts. Park Commission inaugurated annual tennis tournament and free junior tennis clinics and outdoor band concerts.

1963: Wood Dale County Park opened. Children's railroad added and children's zoo renovated at Van Saun Park. New master design for Overpeck County Park approved.

1964: Darlington County Park purchase arranged. Overpeck Park title dispute settled, and golf course sitework started. Rockleigh golf course opened nine-hole addition. Lake excavated at Glen Rock park area.

1965: Three facilities opened: Darlington County Park, the Glen Rock park area, and a recreated 1860s farmyard scene at Van Saun Park. Overpeck and Saddle River Park sitework under way. First annual outdoor art show held.

1966: Bond limit raised from \$3 million to \$5 million. Lakes excavated on Overpeck Golf course site and Wildlife site. Tennis courts added at Wood Dale Park and Riverside Park North.

1967: Bergen County Wildlife Center opened. Free nature education programs and classes popular from start. Park Commission reconstructed tower and paddle wheel landmark in Arcola. Paths constructed around lakes. Bridle trail established at Campgaw Reservation. Ten bridges built in parks. Wallington Park pond improved.

1968: Overpeck County Golf Course opened. Ski center, visitors' center, and lake constructed at Campgaw Reservation. Sodded ballfield with lights completed in Lyndhurst.

1969: Campgaw Mountain Ski Center opened and attracted crowds. Walk-through aviary opened at Van Saun Park. Nine holes of Orchard Hills Golf Course renovated and opened by Park Commission.

1970: Bonding limit increased from \$5 Million to \$10 Million. Athletic field complex opened in Palisades Park portion of Overpeck Park. Streamside park area opened in Rochelle Park. Ski center expanded. Toboggan chutes opened at Campgaw Reservation. Dahnert's Lake improved for ice skating.

1971: Pascack Brook Park family recreation area readied. Campgaw Reservation visitors' center expanded. North end of Van Saun Park lake deepened. Children's railroad opened in Riverside Park South. Elaborate new chlorination system installed at Darlington Park. Extensive sitework done in Leonia portion of Overpeck Park.

FISHING is permitted at 10 county parks. Park ponds also afford duck feeding and model boat sailing.



PICNICKING took first place in a popularity poll in 1959. Eighteen county parks have picnic facilities.

THE SKI CENTER in Campgaw Mountain County Reservation opened in 1969. It has two chair lifts, a T-bar lift, and a rope tow.





PARK PATHS and drives are popular with bicyclists.

BERGEN COUNTY PARK COMMISSION

Park	County Park Acreage			Acreage
	Municipality			
Darlington County Park	Mahwah & Ramsey			
	136	87.73		223.73
Campgaw Mtn. County Reservation	Mahwah Oakland & Franklin Lakes			
	1,056.42	189.12	105.56	1,351.10
Ramapo Valley County Reservation	Mahwah			624.21
Bergen County Wildlife Center	Wyckoff			81.34
Wood Dale County Park	Woodcliff Lk., Hillsdale & Park Ridge			
	55.01	52.72	9.82	117.55
Rockleigh Bergen County Golf Course	Rockleigh, Norwood & Northvale			
	164.12	87.83	9.93	261.88
Pascack Brook County Park	Westwood & River Vale			
	120.50	21.63		142.13
Saddle River County Park				
(a) Wild Duck Pond Area	Ridgewood	79.83		
(b) Glen Rock Area	Glen Rock	64.31		
(c) Dunkerhook Area	Paramus	171.60		
(d) Saddle Brook Area	Saddle Brook	79.87		
(e) Rochelle Park Area	Rochelle Park	84.12		
(f) Fair Lawn Area (Undeveloped)	Fair Lawn	93.81		573.54
Van Saun County Park	Paramus & River Edge			
	53.18	86.40		139.58
County Parks in Garfield	Dahnert's Lake-Belmont Hill			
	9.53	9		18.53
Overpeck County Park	Englewood, Leonia, Teaneck, Ridgefield Pk & Palisades Park			
	7.71	168.31	471.93	
	100.57	63.60		813.43
	Ridgefield			
	1.31			.08
Hackensack River				22.99
Wallington County Park	Wallington			
Riverside County Park				
(a) North Area	Lyndhurst	76.46		108.52
(b) South Area	North Arlington	32.06		190.55
Undeveloped County Park Area	Alpine			4,669.16

REPORT OF GREEN ACRES ASSISTANCE PROGRAM PARTICIPATING FUNDS RECEIVED

December 31, 1972

Date	Former Owner	Town	Area	Total Acreage	Total Cost	50% of Cost Received
12/13/62	E. Carman et al	Norwood	N.E. Bergen	86.80	\$260,000.00	\$130,000.00
3/18/63	Baier & Kinz	Alpine	N.E. Bergen	93.10	400,000.00	200,000.00
4/26/63	J. Henkel et al	Wyckoff & Waldwick)	N.W. Bergen	81.35	400,000.00	200,000.00
1/15/64	Various parcels	Alpine	N.E. Bergen	97.45	310,000.00	155,000.00
2/9/65	Various small parcels	Paramus	Saddle River	3.63	50,250.00	25,125.00
3/17/65	First Nat'l. Bank, Passaic County Trustees	Mahwah) and) Ramsey)	N.W. Bergen	178.26	1,150,000.00	575,000.00
6/15/67	C.&K. Weleck	Mahwah	N.W. Bergen	59.75	137,418.00	68,709.00
1/29/72	Diocese of Newark	Mahwah	N.W. Bergen	624.21	1,560,527.50	780,263.00
		Total Acreage Acquired		1,224.55	\$4,268,195.50	\$2,134,097.00
1/11/66	County of Bergen	Teaneck Leonía Englewood Palis. Pk. Ridge. Pk. }	Overpeck	Tidal Lands 399.29	400,000.00	200,000.00
					\$4,668,195.50	\$2,334,097.00

In addition to the above, we also have received the following participating funds from other government agencies.

Date	Received From	Contributed Towards	Location	Amount
8/2/65	U.S. Government Open Space Program	Acquisition of the Darlington Country Club Property	Mahwah & Ramsey Ramsey	\$189,068.00
6/27/68	U.S. Government Bureau of Outdoor Recreation	Improvements at Wild Life Center, Wyckoff	Wyckoff	148,568.09
6/9/69	U.S. Government Dept. of Housing & Urban Development	C. & K. Weleck	Mahwah	68,709.00
				\$406,345.09

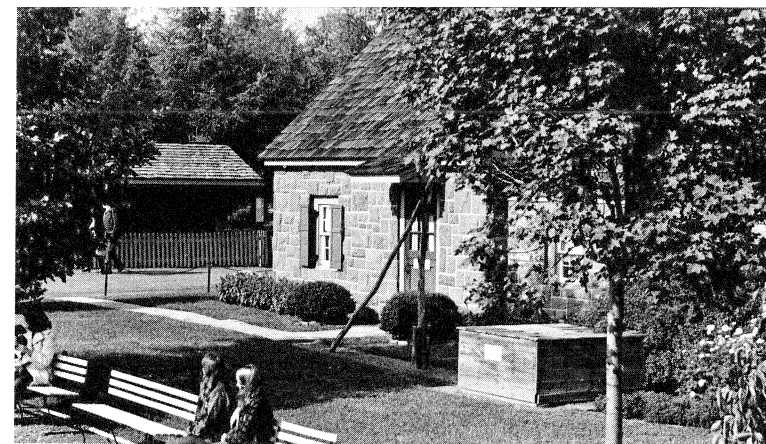
SUMMARY

Total contributed by Green Acres Assistance Program —	\$2,334,097.00
Total contributed by U.S. Government Agencies —	406,345.09
	<u>\$2,740,442.09</u>

**CONDENSED STATEMENT OF PROPERTIES
COMMITTED OR ACQUIRED FOR PARK PURPOSES
COMBINED BOND, BUDGET AND OTHER CAPITAL FUNDS**

Close of December 31st, 1972

AREA	SUB-TOTAL		TOTALS	
	Acreage	Cost	Acreage	Cost
OVERPECK CREEK				
Private properties purchased	100.79	\$458,874.00		
Municipal properties donated or committed	712.64	—0—		
State Tidal Lands purchased	—0—	400,000.00		
			813.43	\$858,874.00
PASSAIC RIVER				
Private properties purchased	49.86	121,320.00		
Private properties donated	0.07	1.00		
Municipal properties donated or committed	81.58	—0—		
			131.51	121,321.00
SADDLE RIVER				
Private properties purchased	496.92	604,005.00		
Private properties donated	10.01	1.00		
Municipal properties donated	66.61	3,000.00		
			573.54	607,006.00
SOUTHWEST BERGEN				
Private properties purchased	—0—	2,200.00		
Municipal properties donated	18.53	2.00		
			18.53	2,202.00
VAN SAUN				
Private properties purchased or committed	138.33	204,711.73		
Private properties donated	1.25	—0—		
			139.58	204,711.73
NORTHWEST BERGEN				
Private properties purchased	2,227.88	4,152,259.21		
Municipal properties donated	52.50	—0—		
			2,280.38	4,152,259.21
NORTHEAST BERGEN				
Private properties purchased	438.00	1,097,806.75		
Private properties donated	14.11	—0—		
Municipal properties donated	0.32	—0—		
			452.43	1,097,806.75
PASCACK BROOK				
Private properties purchased	24.67	53,221.88		
Municipal properties donated	117.46	—0—		
			142.13	53,221.88
PASCACK VALLEY				
Private properties purchased	109.98	232,869.00		
Private properties donated	0.88	—0—		
Municipal properties donated	6.69	—0—		
			117.55	232,869.00
HACKENSACK RIVER				
Private properties purchased			0.08	10.00
ALL AREAS				
Legals, Advertising, Engineering, etc.			—0—	64,795.67
			4,669.16	7,395,077.24



THE REPLICA of an 1860's farm scene at Van Saun Park provides a glimpse into Bergen's rural past.

**BERGEN COUNTY PARK COMMISSION
LAND ACQUISITION
SUMMARY**

SOURCE OF APPROPRIATIONS AND DISBURSEMENTS

Close of December 31, 1972

DESCRIPTION	Acreage	Disbursements	Appropriations
APPROPRIATIONS			
Park Commission Bond Funds (as adjusted)			5,568,062.50
Miscellaneous appropriation to Bond Account			
Re: Land Reclamation Corp. Prop. taxes			256.98
Park Commission Budget Funds			185,633.18
State of N.J. Green Acres Assistance Program			
(Joint Closing Account)			1,105,000.00
Capital Funds Surplus, Re: Green Acres			170,000.00
Capital Funds Surplus (Budget)			932.00
Capital Funds Surplus, Re: Federal Open Space			
Land Program			189,068.00
Trust Account, County Parks, Re: State of N.J.			
Route No. 95, Overpeck above 2.93 El.			199,985.00
Trust Account, County Parks, Re: Green Acres,			
Overpeck, Tidal Lands			200,000.00
DISBURSEMENTS			
Private Properties Committed or Acquired			
Bond Account	3,490.22	6,751,419.46	
Budget Account	122.61	175,860.11	
Municipal Properties Committed or Acquired			
Bond Account	1,056.33	3,000.00	
Budget Account	—0—	2.00	
State Bureau of Navigation, Tidal Lands Acq.			
Trust Account	—0—	199,985.00	
Green Acres Account	—0—	200,000.00	
Budget Account	—0—	15.00	
Legals, Adv. Engineering, etc.			
Bond Account		55,039.60	
Budget Account	4,669.16	9,756.07	
Dec. 31, 1971 to Balance (Available Bond Funds		7,395,077.24	7,618,937.66
on Hand)		223,860.42	
	4,669.16	7,618,937.66	7,618,937.66

Bergen County Park System

1. RAMAPO VALLEY COUNTY RESERVATION

Ramapo Valley Road (Route 202), Mahwah

Hikers may explore the wooded hillside, with its mountain fishing pond and waterfall. Tent camping is permitted beside the Ramapo River and lower lake. All gear must be carried by the campers, as NO VEHICLES are permitted inside the park entrance. Canoes and rafts may be carried to and from the river frontage by persons on foot.

2. CAMPGAW MOUNTAIN COUNTY RESERVATION

Campgaw Road, Mahwah

This 1,351-acre wooded park is the largest property in the County Park system. It has hiking trails campsites (some with tent platform or adirondack shelter), picnic facilities, a 4½-mile bridge trail, and children's rustic play equipment. The visitors' center, a ski shelter in winter, is utilized for nature education in other seasons.

SKI AREA: Machine-made snow is sprayed on the 1,500-foot main slope, with two chair lifts (one has mid-station); the 600-foot school slope, with T-bar lift; and the 800-foot school slope, with rope tow. Flanking side trails, some 2,000 feet long, depend on natural snow. The visitors' center has a wood fire in the lounge, a snack bar, and a shop which rents and sells skiing equipment. Expert instruction is available.

TOBOGGAN CHUTES: The 1,600-foot chutes are artificially iced. There is a warming building. Rates are posted by the lessee.

NATURE EDUCATION: Public nature walks and programs are scheduled here in spring and summer. Ecology courses are offered in summer. Special programs are arranged for groups. A small nature museum is open daily in summer, less often in other seasons.

HORSEBACK RIDING: A riding center is to be added at Campgaw. There will be riding instruction and horses for hire. The reservation has a 4½-mile bridge trail; use is by permit.

3. DARLINGTON COUNTY PARK

Darlington Avenue, Mahwah

There is swimming in two of the three lakes on this rolling site in foothills of the Ramapo Mountains. The third lake affords fishing and rental boating. There is an entrance fee during the swimming season, Memorial Day weekend-Labor Day. The park has sand beaches, picnic groves, a fieldhouse with snack bar and open terraces, pavilions, children's playgrounds, and courts for tennis, handball, shuffleboard, basketball, and horseshoe pitching. The park is closed December 1 — March 31.

4. BERGEN COUNTY WILDLIFE CENTER

Crescent Avenue, Wyckoff

Visitors can see and learn about wildlife of this area's natural habitat. The exhibit hall, which overlooks the waterfowl pond, has a meeting room and a browsing library. Naturalists are in attendance.

Outside there are shelters for live animals and birds and a 2/3-mile nature walk with trail guide. There are some picnic tables.

The center offers public programs and classes and also schedules special programs for school groups and for organizations.

Programs for senior citizens are presented Tuesdays at 2 P.M. most of the year.

5. WOOD DALE COUNTY PARK

Prospect Avenue, Woodcliff Lake

The pond is the main attraction at this family recreation area. In winter the pond is a popular ice skating area. In other seasons young people fish and sail model boats at the pond, and feed the ducks.

The park has free tennis courts, picnic facilities, and a children's playground.

6. BAYLOR MASSACRE BURIAL SITE

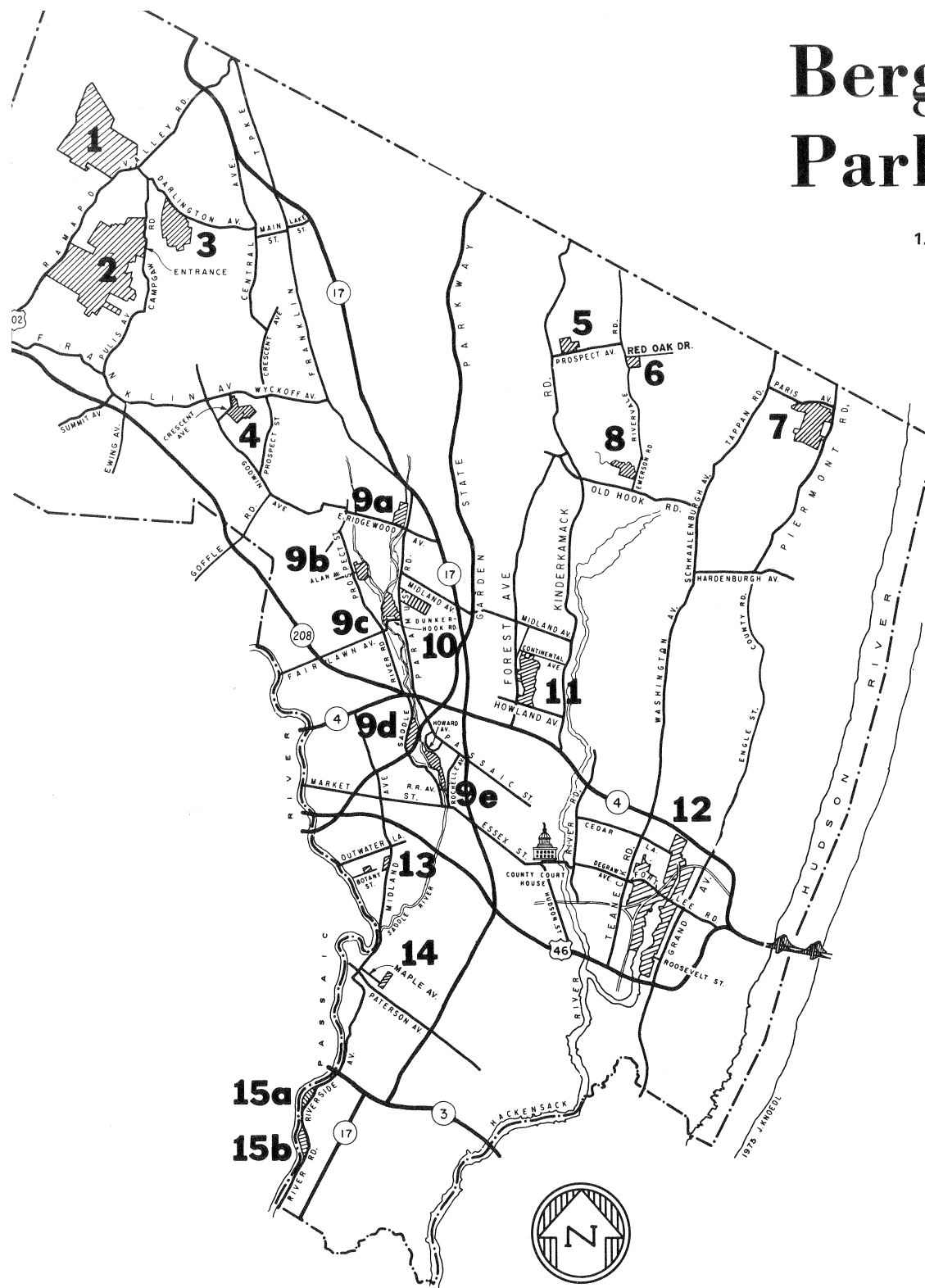
**Red Oak Drive, River Vale
(Off River Vale Road)**

Visitors to this shaded wayside historical park may read markers telling of the Sept. 28, 1778 Baylor Massacre and may see the millstone which long ago covered the burial place on this site. Victims whose remains were uncovered here in August, 1967, were members of a detail in Col. George Baylor's Continental Army Cavalry regiment. Fifteen dragoons died of wounds inflicted in a 2 A.M. British ambush.

7. ROCKLEIGH BERGEN COUNTY GOLF COURSE

Paris Avenue, Rockleigh

Lines form early at this 27-hole rolling course at the base of the Palisades' western slope.



The stone fieldhouse has a snack bar and pro shop. Golf cars and carts are available for rental.

8. PASCACK BROOK COUNTY PARK

Emerson Road, Westwood

A picnic grove overlooks the fishing pond. The park has three free tennis courts, a children's playground, and two ball fields. An indoor ice rink will be built here under leasing agreement with the Park Commission.

9. SADDLE RIVER COUNTY PARK

This linear park will eventually flank Saddle River for 5½ miles, and will have scenic drives and paths. The park has five recreation areas, and additional facilities are under development.

a. Wild Duck Pond Area

**East Ridgewood Avenue
Ridgewood**

Ducks abound on the pond, which is a popular center for ice skating and fishing as well as for duck feeding.

The park area has extensive picnic facilities, a large children's playground, and shuffleboard and horseshoe courts. A recreation room is available for scheduled meetings.

b. Glen Rock Area

**Alan Avenue, just east of
Prospect Street**

Here too the pond is the focal point, affording duck feeding, fishing, and model boat sailing. The area has picnic facilities, a children's playground, tennis courts, and a rink which is flooded in winter for ice skating.

c. Dunkerhook Area

Dunkerhook Road, Paramus

The cool shade of wooded picnic areas is especially welcome on a hot day.

Ducks in the area's winding stream look for handouts from park visitors. The area has a children's playground and horseshoe courts.

The Commission plans to add a paved rink which will be flooded in winter for ice skating.

d. Saddle Brook Area

Saddle River Road

Picnic groves and a fishing lake are the most popular attractions. Model sailboat regattas may sometimes be seen on the lake. Duck feeding is a favorite pastime. There is a bicycle and pedestrian path around the lake.

The area has a children's playground and facilities for baseball, football, ice skating, and horseshoe pitching. A paved bicycle path is to be built from the lake to Railroad Avenue.

e. Rochelle Park Area

Railroad Avenue.

There are picnic tables along the 1-mile streamside park drive. Initial facilities at this new area include a children's playground and a natural-ice skating rink. Tennis courts are planned.

Tower Restoration, Arcola, Paramus

The tower and paddle wheel, focal points of the famed Easton gardens, were reconstructed above the ruins of the original complex built circa 1900 near the site of the historic 1745 Red Mill. The reconstructed landmark may be seen from Saddle River and Paramus Roads south of Route 4.

PLANS CALL for a bicycle path from the Glen Rock Area to Route 4.

10. ORCHARD HILLS

BERGEN COUNTY GOLF COURSE

Paramus Road, Paramus

Mature trees and shrubs grace this nine-hole course on Bergen Community College property. The Park Commission renovated the course and is operating it under contract with the College.

As at all County courses, the greens fee is for the day rather than the round.

The golf house has food vending machines and a small pro shop.

11. VAN SAUN COUNTY PARK

**Entrances on Forest and Continental
Avenues, Paramus and Howland
Avenue, River Edge**

This is our most popular and most complete County park. The children's zoo and children's railroad are perhaps the best known features. The train tracks form a loop around the zoo, a walk-through aviary and an 1860s farmyard scene.

A 12-course tennis center, a 6-acre lake which affords fishing and ice skating, picnic groves, a large children's playground, and a shaded garden around historic Washington Spring are among other features of the park. Park facilities include a snack shop, shuffleboard and horseshoe courts, sledding slopes, ball fields, and an open play area. Free tennis clinics are conducted all summer for registered residents aged 8-17.

The Park Commission sponsors an outdoor art show here annually, in late summer. Entry forms may be obtained from the Commission office.



GEESE surround a delighted toddler. Waterfowl dot county park ponds.

12. OVERPECK COUNTY PARK

This 813-acre meadowland site is being developed gradually as Bergen County's central park with a variety of recreation facilities. A 150-acre boating lake is being excavated by stages. Current facilities include:

Overpeck Bergen County Golf Course

East Cedar Lane, Teaneck

There are two ponds, two lagoons, and an 8-acre lake on this 18-hole course. The contemporary redwood golf house contains a lounge, snack bar, deck, and pro shop.

Athletic Fields

Roosevelt Street, Palisades Park

Sodded baseball and football fields with bleachers are the initial facilities in this complex. A fieldhouse is under construction. Tennis courts will be built nearby.

Family Recreation Area

Fort Lee Road, Leonia

A horseback riding center, pony ring, and children's playground are to be added to this area, which now has picnic facilities and a rink which is flooded in winter for ice skating.

A wildlife refuge adjoins the area.

NEW DEVELOPMENT: An athletic field complex, a horseback riding center, a paved bicycle path, a playground, and a pony ring are to be constructed in the Leonia portion of Overpeck Park.

13. COUNTY PARKS IN GARFIELD

Dahnert's Lake

Midland Avenue

The pond is the center of activity. It affords

ice skating, duck feeding, fishing, and model boat sailing.

The park has picnic facilities and a children's playground.

Belmont Hill

Botany Street

A hilltop rose garden containing more than 55 rose varieties attracts many visitors in June and early fall. The park also has a scenic lookout, children's play equipment, and picnic tables.

14. WALLINGTON COUNTY PARK

Rose Street, off

Paterson Plank Road

The pond is used for ice skating, fishing, and model boat sailing. Sledding slopes make this an all-season park. It has baseball, football, and picnicking facilities, tennis courts, and a children's playground.

15. RIVERSIDE COUNTY PARK

Both the North and South Areas of this southwest Bergen park are on the Passaic River.

a. North Area

Nightball games are played at the park's lighted field. The park has other ball fields (for baseball, softball, and football), tennis courts, picnic facilities, a rink which is flooded for ice skating, a children's playground, and horseshoe courts.

b. South Area

A wild west playground and three tennis courts are popular new features here. There is a practice backstop with the tennis courts. The area also has a children's railroad, picnic facilities, fields for baseball and softball and football, a rink which is flooded for ice skating, and horseshoe courts.



Bergen County Park Commission Annual Report, 1972
