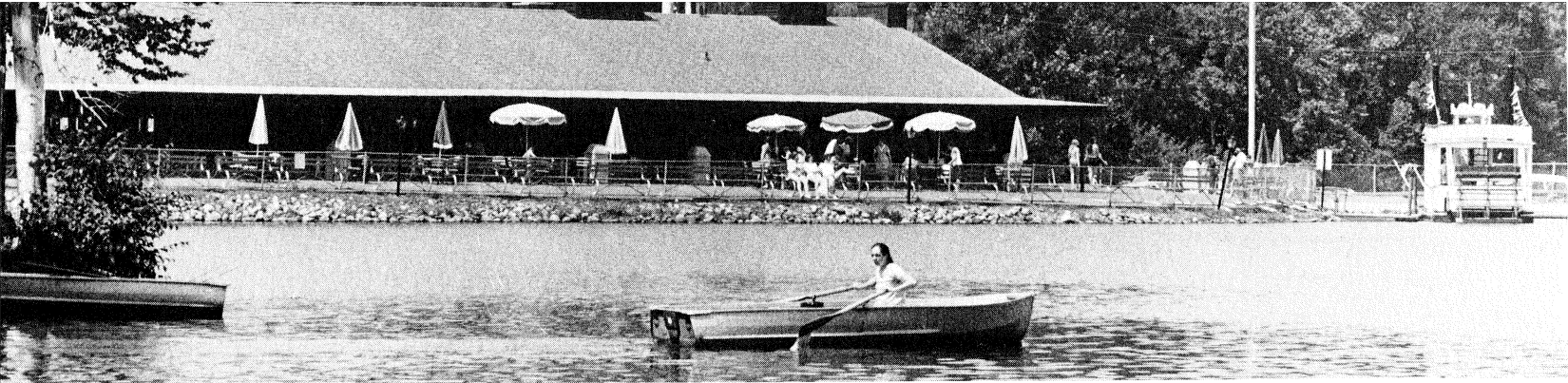


Annual Report, 1971
Bergen County Park Commission



A ROW BOAT moves toward the docking area at Darlington County Park. The rental fleet includes pedal boats as well as the row boats.

BERGEN COUNTY PARK COMMISSION, 1971

Hackensack, New Jersey

Frederick E. Wendel, *President*

James P. Miller, *Vice President**

Otto C. Pehle, *Secretary*

Frank P. Quintano, *Ass't. Sec.*

Richard Norman

Roy Woodward

George Warchol

Lawrence E. Nyland

Mrs. Ina Albert

James A. Mc Faul
Executive Director

John A. Spizziri
Assistant County Counsel

*Resigned September, 1971

BOARD OF CHOSEN FREEHOLDERS, 1971

Frank A. Buono, Jr., *Director*

William D. McDowell,
Deputy Director

Henry L. Hoebel, *Park and
Recreation Committee Chairman*

Mrs. June M. Clark

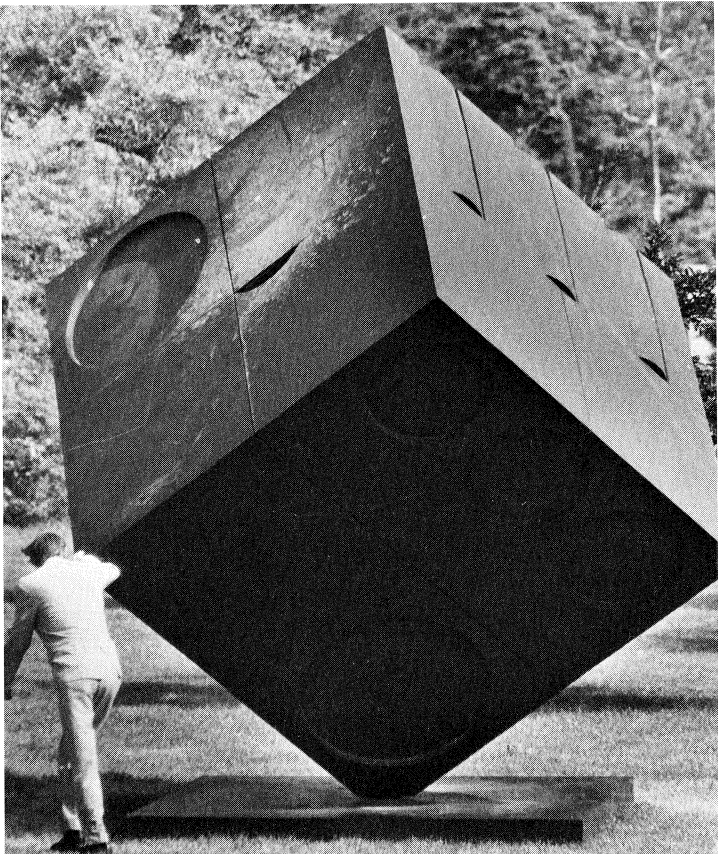
Franklin H. Cooper

Walter Marut

Harry Randall, Jr.
Victor M. Williams
Kevin J. McDermott

Richard L. Nelson,
Executive Administrator

Michael J. Ferrara
County Counsel



SCULPTURE at Van Saun Park created lively response from visiting public.



YOUNG FISHERMEN try their luck at Saddle River County Park's Glen Rock Area. There is fishing at eight county park areas.

The Outdoor Life Close To Home

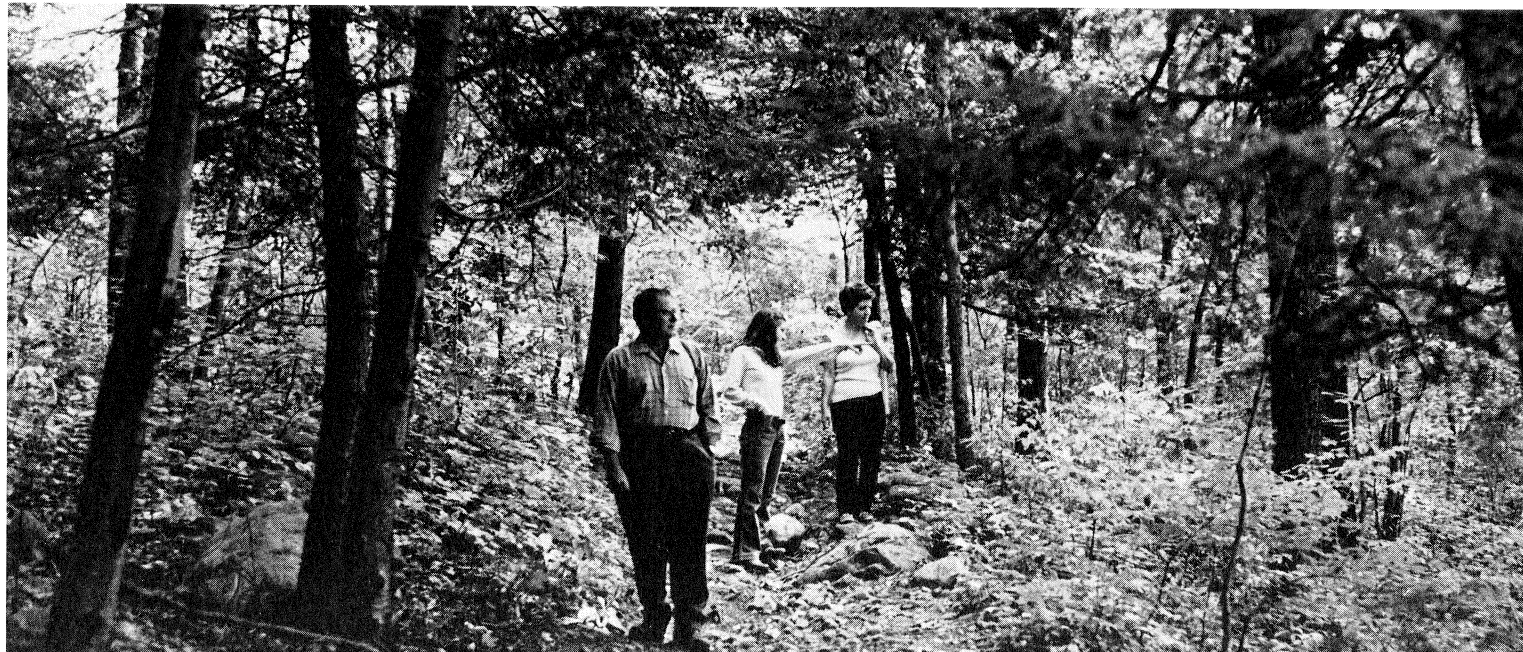
What does Campgaw Mountain Ski Center have that an Alp doesn't have? What advantage does Darlington County Park have over Lake Champlain? What can our County park nature education and camping facilities boast that no national park can match?

The answer, of course, is "convenience".

Our parks are here, minutes from home, and this means there is time for a visit after school, we can have a supper cookout on a work day, and the family can go skiing or ice skating on a week night.

The Park Commission knows we need more County parkland and more recreation facilities—and we are working at expansion—but, acre for acre, few other suburban park systems can match Bergen's for diversity and enjoyment. Bergen residents prize and use their County parks, and have shown at the polls their willingness to pay for the convenience.

Frederick E. Wendel
President



A WALK IN THE WOODS affords release from pressures and tension. This hiking trail is at Campgaw Mountain County Reservation.

Record Crowds Point Up The Need for Expansion

Visitors turned out in record numbers throughout the Bergen County system in 1971, and many areas were overcrowded on weekends. The Park Commission, in co-operation with the Board of Freeholders, continued to expand recreation facilities and to study potential sites for new parks.

More than 10 per cent of the County population—98,635 residents—obtained Park Commission registration entitling the holder to resident rates at Park Commission fee facilities: the golf courses, the ski center, Darlington during the swimming season, and the Van Saun Park tennis center.

When you consider that registration is waived for senior citizens and children under 5 and that there are far more free than fee facilities in the County park system, you realize that our parks are enjoyed by a considerable percentage of Bergen residents.

That Park Commission registrants utilized the fee facilities is evidenced by the record \$1,039,407 these facilities yielded in 1971 for the County Treasury.

Pascack Park Readied

Lake construction, grading, seeding, and paving were completed in 1971 for a family recreation area in Pascack Brook County Park. The newly developed portion, scheduled to open in spring of 1972, initially will have picnic tables, a picnic shelter, and children's play equipment. Tennis courts are scheduled to be added in 1972. The new area is near the park's existing ball fields. Proposals were received in 1971 for an indoor ice rink to be built and operated in the park under leasing agreement with the Park Commission.

Addition At Campgaw

A 1971 two-level addition to the visitors' center at Campgaw Mountain County Reservation provides much needed space for skiers' use in winter and for nature education in other seasons. The building now has adequate space for ski rental, a more spacious first aid room, and a maintenance storage area. The Park Commission installed four quiet new snow-

making machines in December at Campgaw.

The year's park projects included sitework for an athletic field complex in the Leonia portion of Overpeck County Park, deepening of the north end of the lake at Van Saun Park, work on new chlorination and septic systems and tennis-court reconstruction at Darlington Park, and land-clearing for a wayside historical park at the Baylor Massacre burial site in River Vale. (The September 28, 1778 massacre took the lives of 15 of Colonel George Baylor's Continental Army dragoons. Remains of victims whose

NEARLY READY for the public as 1971 ends, Pascack Brook County Park's new recreation area is to open in spring of 1972 with picnic facilities and a fishing lake.

bodies had been hidden in tanning vats were uncovered July 30, 1967 by searchers engaged by the county to find the burial site before it could be obliterated by home builders.)

Overpeck Sitework

Work at Overpeck Park, in the meadowland, included excavation and extensive land-filling operations and placement of topsoil and planting of



A PRACTICE drill for aid to injured skiers is held in Campgaw's new first aid room.

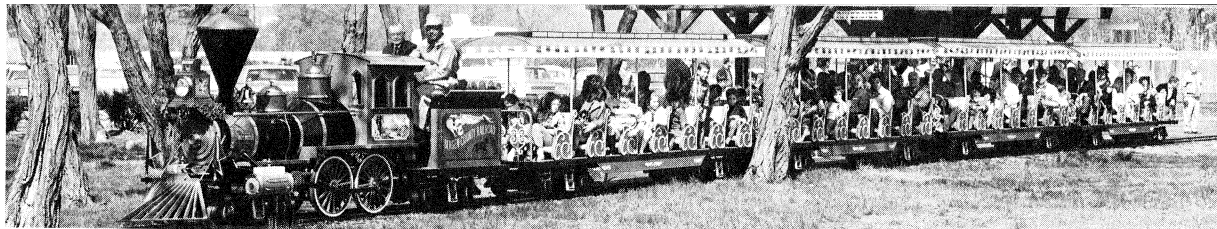
SNOW-MAKING is quiet with this machine, one of four bought for Campgaw Ski Center.

GETTING OUTFITTED for the slopes is facilitated by the 1971 addition of a new ski rental area.

A STERN-WHEELER in miniature is launched at Darlington Park's fishing-boating lake.



THE NEW RAILROAD at Riverside Park South takes passengers for a ride into the past.



grass on both sides of Fort Lee Road in Leonia, preparation of the base for the fieldhouse footings and foundation and storm drain installation in Palisades Park.

A new children's railroad opened in the spring at Riverside County Park South. The train, like those at Van Saun, has a miniature replica of an 1866 locomotive and canopied coaches.

A miniature version of a stern-wheel riverboat initiated passenger service July 3 at Darlington Park. The boat, the Glen Queen, was donated by attorney William R. Morrison and was adapted for Darlington use by the Park Commission.

More Nature Education

At the Bergen County Wildlife Center and at Campgaw Mountain Reservation, Park Commission naturalists scheduled more public programs and nature walks and taught more summer nature classes than ever before. In

addition, they prepared exhibits, participated in community conservation activities, and provided 1,281 school classes and organizations with special programs having a total attendance of 26,629.

A pilot senior-citizen program at the Wildlife Center was so well received that the Park Commission decided to have a series of afternoon programs for seniors in the summer of 1972.

The Park Commission cooperated with the North Jersey Cultural Council and Bergen Community College in presenting a sculpture exhibition all summer at Van Saun Park. The exhibit excited a great deal of interest. The Park Commission transported and installed the sculpture and provided day guard service.

Especially For Seniors

Free junior tennis clinics were conducted in 1971 for the eleventh summer at Van Saun Park. Also at Van Saun Park, the Park Commission sponsored its seventh annual outdoor art show.

Golf course and Darlington rate reductions for Bergen's senior citizens were extended to weekends and holidays. The Park Commission voted May 24 to let county residents over 65 years of age enjoy Darlington and the county golf courses at half the regular

resident rates at all times. Previously, the reduction had been limited to weekdays. (Darlington Park has an entrance fee only during the summer swimming season.)

A pond treatment system was installed at the Wildlife Center to clear and purify the water and also to keep areas ice-free in winter. Donations paid \$900 of the installation's \$1,487 cost.

21,000 Daffodils

At the same park, in the area of the projected garden center, 3,000 daffodils, 1,000 scillas, and 75 rhododendron and azaleas were planted. There are now 21,000 daffodils on the side of the hill.

Construction projects in 1971 included new maintenance buildings at Van Saun Park and the Wildlife Center, enlargement of the Rockleigh Golf Course maintenance building, a new equipment shed at Overpeck Park's Leonia recreation area, and completion of the railroad depot at Riverside Park South and the comfort station at Saddle River County Park's Rochelle Park Area. Also, the bridge at Dahnert's Lake County Park was replaced with a new and wider one.

A new and more comprehensive park system guide became available to the public in the spring.

Parks Flooded

Late summer flooding caused widespread damage in the streamside county parks. Rampaging waters shortened the Darlington Park swimming season, caused golf courses to close temporarily, washed out new turf, carried away picnic tables, felled trees, carved ruts, and piled up debris.

It should be noted that once the waters receded and the mess was cleaned up, most of the park areas were in fine shape again. The parks weathered the storm far, far better than the built-up areas along waterways. The first Park Commission was shown to have acted wisely and with foresight nearly 25 years ago when it placed top priority on park sites bordering and flanking streams.



AERATION equipment is installed at the Bergen County Wildlife Center to keep the pond clear.

TOBOGGANISTS enjoy the warming building and tractor tow new in 1971 at Campgaw.





ROLLING TERRAIN at the Rockleigh Course gives a walking golfer quite a workout. A golf car helps to ease the way.

THIS DECK overlooks the 18-hole Overpeck Course.



Riches We All Can Enjoy

THE WESTERN SLOPE of the Palisades contributes to the Rockleigh Course's beauty. The 27 holes are divided into three layouts.

Beautiful and challenging Rockleigh, Overpeck, and Orchard Hills county courses put golf within the means of the majority of Bergen residents.

Dedicated parkland, Rockleigh and Overpeck courses are there for keeps. Whether or not we play golf, we can all take pleasure in having these sweeping vistas in our densely populated county.

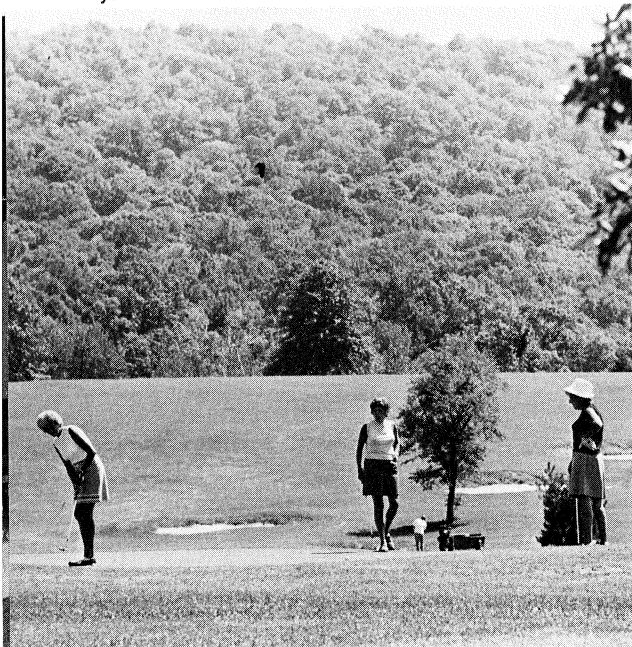
The Orchard Hills course, on Bergen

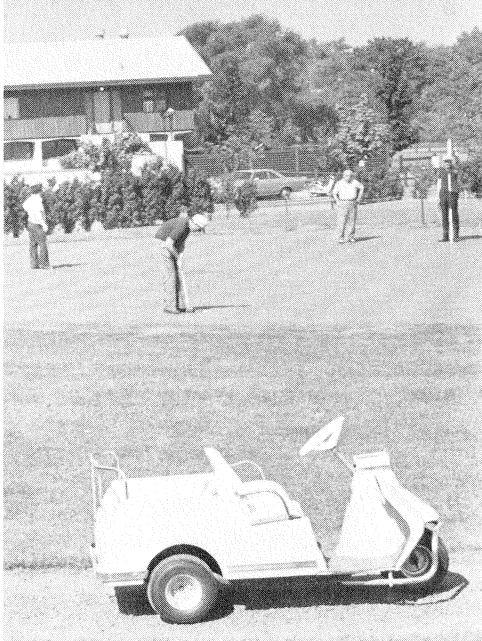
Community College property, will go out of business when the college requires the area for expansion. Golfers are hoping this won't happen before we have the projected 210-acre course on Campgaw Road, Mahwah.

Most of the 27-hole Rockleigh course is on rolling terrain at the base of the western slope of the Palisades. The 18-hole Overpeck course has two ponds, two lagoons, and an

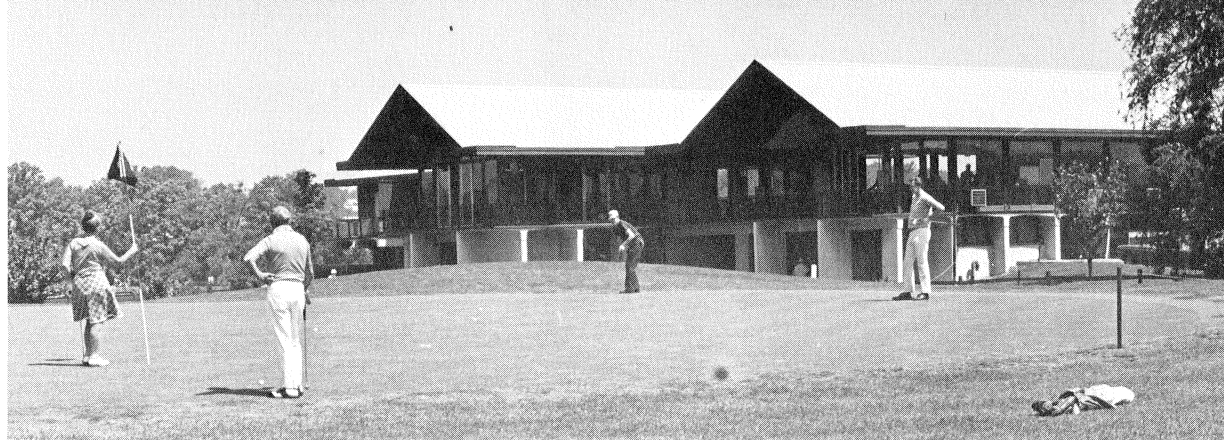
eight-acre lake. Orchard Hills is rich in mature trees and shrubs.

The problem is that the courses are too popular, particularly on weekends. Golfers wait up to four hours to tee off on a lovely Sunday. As the park system matures and develops, it is expected that golfing facilities will expand. Present plans call for an 18-hole course some 10 years hence on county-owned property in Lyndhurst.





A CAR stands by awaiting golfers on putting green.



OVERPECK COURSE has a contemporary redwood fieldhouse.

THERE ARE ponds, lagoons, and a lake at Overpeck Course.



PATIENCE is needed when you're facing a long wait.

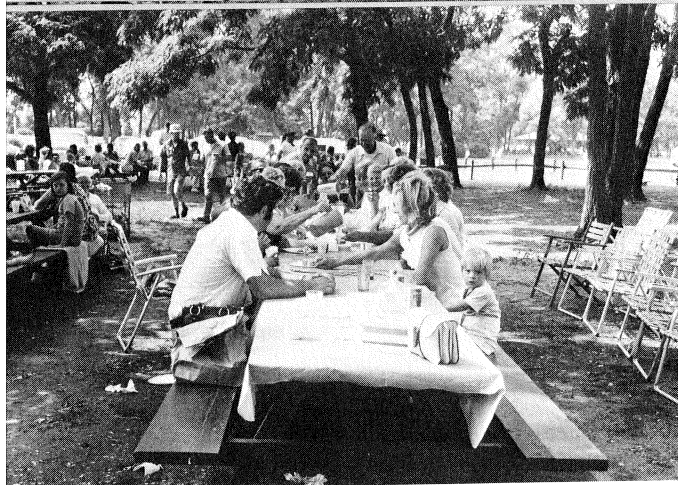


Resident rates are invitingly low, particularly on weekdays, and Bergen's senior citizens may play at any county course for half the resident greens fee. There is a \$35 season registration which lowers greens fees for the residents under 65. This season plan is also available to golf teams at high schools in Bergen County.

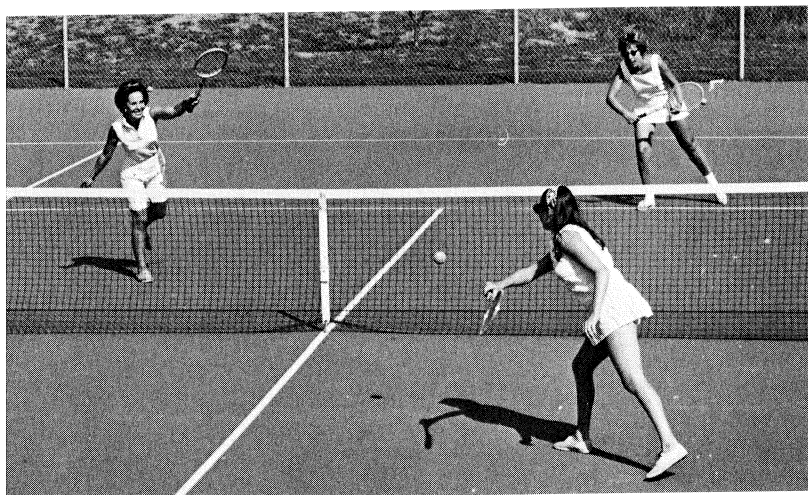


ORCHARD HILLS, a 9-hole course, is often played twice around.

ROCKLEIGH'S stone fieldhouse is a busy place, serving large numbers of golfers.



A PICNIC in the park is an American tradition.



TENNIS courts in parks are popular most of the year.

LAMBS and visitors enjoy one another at Van Saun Park.

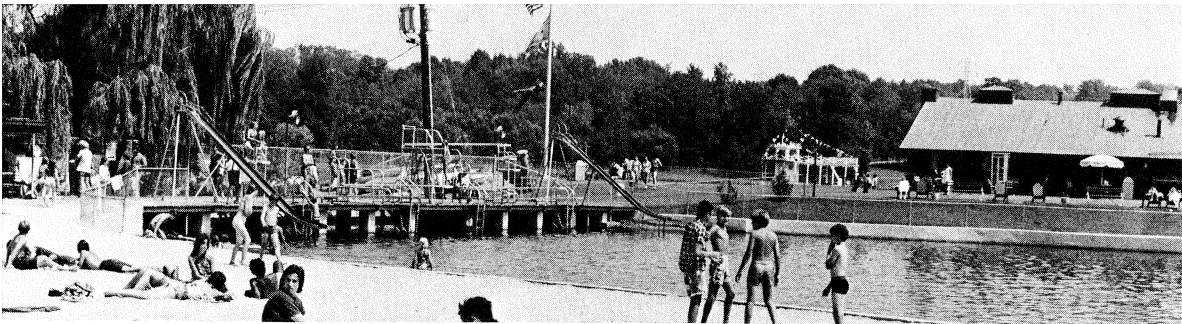


CONDENSED STATEMENT OF PROPERTIES COMMITTED OR ACQUIRED FOR PARK PURPOSES COMBINED BOND, BUDGET AND OTHER CAPITAL FUNDS

Close of December 31st, 1971

AREA	SUB-TOTAL		TOTALS	
	Acreage	Cost	Acreage	Cost
OVERPECK CREEK				
Private properties purchased	100.79	\$ 458,874.00		
Municipal properties donated or committed	712.64	—0—		
State Tidal Lands purchased	—0—	400,000.00	813.43	\$ 858,874.00
PASSAIC RIVER				
Private properties purchased	49.86	121,320.00		
Private properties donated	0.07	1.00		
Municipal properties donated or committed	80.94	—0—	130.87	121,321.00
SADDLE RIVER				
Private properties purchased	Z- 496.36	Z- 598,255.00		
Private properties donated	10.01	1.00		
Municipal properties donated	66.61	3,000.00	572.98	601,256.00
SOUTHWEST BERGEN				
Private properties purchased	—0—	2,200.00		
Municipal properties donated	18.53	2.00	18.53	2,202.00
VAN SAUN				
Private properties purchased or committed	138.33	204,711.73		
Private properties donated	1.25	—0—	139.58	204,711.73
NORTHWEST BERGEN				
Private properties purchased	1,603.67	2,591,731.71		
Municipal properties donated	8.07	—0—	1,611.74	2,591,731.71
NORTHEAST BERGEN				
Private properties purchased	438.00	1,097,806.75		
Private properties donated	14.11	—0—		
Municipal properties donated	0.32	—0—	452.43	1,097,806.75
PASCACK BROOK				
Private properties purchased	24.67	53,221.88		
Municipal properties donated	115.46	—0—	140.13	53,221.88
PASCACK VALLEY				
Private properties purchased	109.98	232,869.00		
Private properties donated	0.88	—0—		
Municipal properties donated	6.69	—0—	117.55	232,869.00
HACKENSACK RIVER				
Private properties purchased			0.08	10.00
ALL AREAS				
Legals, Advertising, Engineering, etc.			—0—	43,902.12
			3,997.32	\$5,807,906.19

Z—The 0.23 acres originally purchased as part of an approximate .37 acre tract for \$12,400.00 in October 1953 was sold at public sale for \$7,000.00 and proceeds credited to capital funds surplus.



SWIMMERS at Darlington Park will benefit from the new chlorination system at both swimming lakes.

BERGEN COUNTY PARK COMMISSION LAND ACQUISITION SUMMARY SOURCE OF APPROPRIATIONS AND DISBURSEMENTS

Close of December 31st, 1971

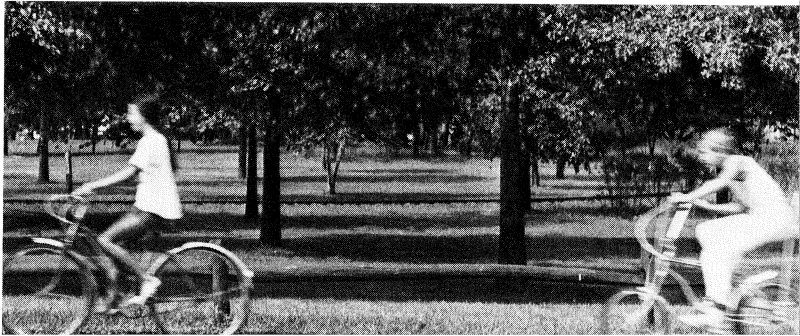
DESCRIPTION	Acreage	Disbursements	Appropriations
APPROPRIATIONS			
Park Commission Bond Funds (As Adjusted)			\$3,882,312.50
Miscellaneous appropriation to Bond Account Re: Land Reclamation Corp. Prop. taxes			256.98
Park Commission Budget Funds			183,195.68
State of N.J. Green Acres Assistance Program (Joint Closing Account)			1,105,000.00
Capital Funds Surplus, Re: Green Acres			170,000.00
Capital Funds Surplus (Budget)			932.00
Capital Funds Surplus, Re: Federal Open Space Land Program			189,068.00
Trust Account, County Parks, Re: State of N.J. Route #95, Overpeck above 2.93 El.			199,985.00
Trust Account, County Parks, Re: Green Acres, Overpeck, Tidal Lands			200,000.00
DISBURSEMENTS			
<i>Private Properties Committed or Acquired</i>			
Bond Account	2,865.45	\$5,185,141.96	
Budget Account	122.61	175,860.11	
<i>Municipal Properties Committed or Acquired</i>			
Bond Account	1,009.26	3,000.00	
Budget Account	—0—	2.00	
<i>State Bureau of Navigation, Tidal Lands Acq.</i>			
Trust Account	—0—	199,985.00	
Green Acres Account	—0—	200,000.00	
Budget Account	—0—	15.00	
<i>Legals, Adv. Engineering, etc.</i>			
Bond Account		36,583.55	
Budget Account		7,318.57	
Dec. 31, 1971 To Balance (Available Bond Funds on hand)	3,997.32	\$5,807,906.19	\$5,930,750.16
		122,843.97	
	<u>3,997.32</u>	<u>\$5,930,750.16</u>	<u>\$5,930,750.16</u>

BERGEN COUNTY PARK COMMISSION

County Park Acreage

Park	Municipality	Acreage
Darlington County Park	Mahwah & Ramsey 136 87.73	223.73
Campgaw Mtn. County Reservation	Mahwah, Oakland & Franklin Lakes 1056.42 189.12 61.13	1306.67
Bergen County Wildlife Center	Wyckoff	81.34
Wood Dale County Park	Woodcliff Lk., Hillsdale & Park Ridge 55.01 52.72 9.82	117.55
Rockleigh Bergen County Golf Course	Rockleigh, Norwood & Northvale 164.12 87.83 9.93	261.88
Pascack Brook County Park	Westwood & River Vale 120.50 19.63	140.13
Saddle River County Park		
(a) Wild Duck Pond Area	Ridgewood 79.83	
(b) Glen Rock Area	Glen Rock 64.31	
(c) Dunkerhook Area	Paramus 171.04	
(d) Saddle Brook Area	Saddle Brook 79.87	
(e) Rochelle Park Area	Rochelle Park 84.12	
(f) Fair Lawn Area (Undeveloped)	Fair Lawn 93.81	572.98
Van Saun County Park	Paramus & River Edge 53.18 86.40	139.58
County Parks in Garfield	Dahnert's Lake-Belmont Hill 9.53 9	18.53
Overpeck County Park	Englewood, Leonia, Teaneck, 7.71 168.31 471.93 Ridgefield Pk & Palisades Park 100.57 63.60 Ridgefield 1.31	813.43
Hackensack River		.08
Wallington County Park	Wallington	22.35
Riverside County Park		
(a) North Area	Lyndhurst 76.46	
(b) South Area	North Arlington 32.06	108.52
Undeveloped County Park Area	Alpine	190.55
		<u>3,997.32</u>

BICYCLISTS utilize park drives and paths.



Bergen County

wood fire in the lounge, a snack bar, and a shop which rents and sells skiing equipment. Expert instruction is available.

TOBOGGAN CHUTES: The 1,100-foot chutes are artificially iced. There is a warming building. Rates are posted by the lessee.

NATURE EDUCATION: Specialized nature walks for the public are listed at the Wildlife Center. Summer nature classes and special programs for school classes and other groups are other Campgaw activities, all arranged at the Wildlife Center.

A small nature museum in the visitors' center enhances nature education activities.

HORSEBACK RIDING: A riding center is to be added at Campgaw. There will be riding instruction and horses for hire. The reservation has a 4½-mile bridle trail.

3. BERGEN COUNTY WILDLIFE CENTER

Crescent Avenue, Wyckoff

Visitors can see and learn about wildlife of this area's natural habitat. The exhibit hall, which overlooks the waterfowl pond, has a meeting room and a browsing library. Naturalists are in attendance.

Outside there are shelters for live animals and birds and a ¾-mile nature walk with trail guide. There are some picnic tables. The center offers public programs and classes and also schedules special programs for school groups and for organizations.

A summer program series is planned for senior citizens.

4. WOOD DALE COUNTY PARK

Prospect Avenue, Woodcliff Lake

The pond is the main attraction at this family recreation area. In winter the pond is a popular ice skating area. In other seasons young people fish and sail model boats at the pond, and feed the ducks.

The park has free tennis courts, picnic facilities, and a children's playground.

5. ROCKLEIGH BERGEN COUNTY GOLF COURSE

Paris Avenue, Rockleigh

Lines form early at this 27-hole rolling course at the base of the Palisades' western slope.

The stone fieldhouse has a snack bar and pro shop. Golf cars and carts are available for rental.

6. PASCACK BROOK COUNTY PARK

Emerson Road, Westwood

The new family recreation area has a duck pond, picnic facilities, and children's playground. Tennis courts will be added.

1. DARLINGTON COUNTY PARK

Darlington Avenue, Mahwah

There is swimming in two of the three lakes on this rolling site in foothills of the Ramapo Mountains. The third lake affords fishing and rental boating. There is an entrance fee during the swimming season. Memorial Day weekend-Labor Day. The park has sand beaches, picnic groves, a fieldhouse with snack bar and open terraces, pavilions, children's playgrounds, and courts for tennis, handball, shuffleboard, basketball, and horseshoe pitching.

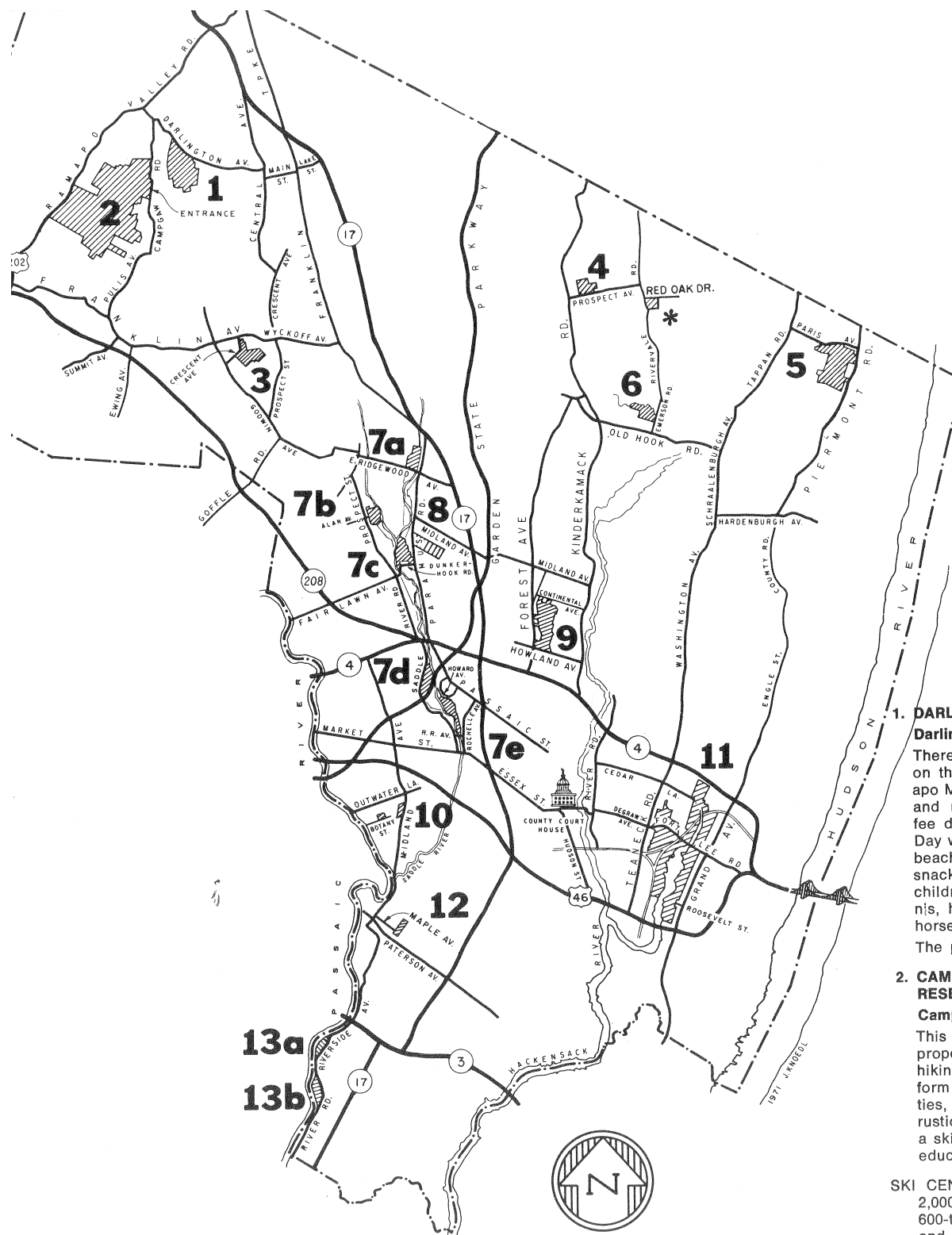
The park is closed December 1-March 31.

2. CAMPGAW MOUNTAIN COUNTY RESERVATION

Campgaw Road, Mahwah

This 1,307-acre wooded park is the largest property in the County Park system. It has hiking trails campsites (some with tent platform or adirondack shelter), picnic facilities, a 4½-mile bridle trail, and children's rustic play equipment. The visitors' center, a ski shelter in winter, is utilized for nature education in other seasons.

SKI CENTER: The 1,650-foot main slope and 2,000-foot north trail with chair lifts and the 600-to-800-foot school slope with T-bar lift and rope tow are supplied with machine-made snow. The visitors' center has a



Park System

An indoor ice rink will be built here under leasing agreement with the Park Commission.

The park has two ball fields and bleachers.

* **WAYSIDE HISTORICAL PARK**

Red Oak Drive, River Vale

This new addition to the County park system honors the memory of Baylor Massacre victims, 15 Continental Army dragoons who died of wounds inflicted in a British ambush Sept. 28, 1778. Searchers engaged by the County found some victims' remains in August, 1967 on this park site. When ambushed, Col. George Baylor's cavalry regiment was quartered in the area.

7. SADDLE RIVER COUNTY PARK

This linear park will eventually flank Saddle River for 5½ miles, and will have scenic drives and paths. The park has five recreation areas, and a sixth is to be added before long.

a. Wild Duck Pond Area

East Ridgewood Avenue
Ridgewood

Ducks abound on the pond, which is a popular center for ice skating and fishing as well as for duck feeding.

The park area has extensive picnic facilities, a large children's playground, and shuffleboard and horseshoe courts. A recreation room is available for scheduled meetings.

b. Glen Rock Area

Alan Avenue, just east of Prospect Street
Here too the pond is the focal point, affording duck feeding, fishing, and model boat sailing. The area has picnic facilities and a children's playground.

c. Dunkerhook Area

Dunkerhook Road, Paramus

The cool shade of wooded picnic areas is especially welcome on a hot day.

Ducks in the area's winding stream look for handouts from park visitors. The area has a children's playground and horseshoe courts.

The Commission plans to add a paved rink which will be flooded in winter for ice skating.

d. Saddle Brook Area

Saddle River Road, Saddle Brook
Picnic groves and a fishing lake are the most popular attractions here. Model sailboat regattas may sometimes be seen on the lake. Duck feeding is a favorite pastime. There is a bicycle and pedestrian path around the lake. The area has a children's playground and facilities for base-

ball, football, ice skating, and horseshoe pitching.

e. Rochelle Park Area

Railroad Avenue

There are picnic tables along the 1-mile streamside park drive. Initial facilities at this new area include a children's playground and a rink which is flooded in winter for ice skating.

DEVELOPMENT UNDER WAY between the Glen Rock and Dunderhook Areas will have access from these areas. Plans call for tennis courts, picnic facilities, woodland trails, a bicycle path, a nature area and pavilion, ball fields, and a playground. The area's woodland beauty will be retained.

Tower Restoration, Arcola, Paramus

The tower and paddle wheel, focal points of the famed Easton gardens, were reconstructed above the ruins of the original complex built circa 1900 near the site of the historic 1745 Red Mill. The reconstructed landmark may be seen from Saddle River and Paramus Roads south of Route 4.

8. ORCHARD HILLS BERGEN COUNTY GOLF COURSE

Paramus Road, Paramus

Mature trees and shrubs grace this nine-hole course on Bergen Community College property. The Park Commission renovated the course and is operating it under a 5-year contract with the College.

As at all County courses, the greens fee is for the day rather than the round.

The golf house has food vending machines and a small pro shop.

9. VAN SAUN COUNTY PARK

Entrances on Forest and Continental Avenues, Paramus, and Howland Avenue, River Edge.

This is our most popular and most complete County park. The children's zoo and children's railroad are perhaps the best known features. The train tracks form a loop around the zoo, a walk-through aviary, and an 1860s' farmyard scene.

A 12-court tennis center, a 6-acre lake which affords fishing and ice skating, picnic groves, a large children's playground, and a shaded garden around historic Washington Spring are among other features of the park.

Pony rides and horseback riding lessons are available.

Park facilities include a snack shop, shuffleboard and horseshoe courts, sledding slopes, ball fields, and an open play area. Free tennis clinics are conducted all sum-



DEER often greet visitors to the Wildlife Center nature trail.

mer for registered residents aged 8-18.

The Park Commission sponsors an outdoor art show here annually, in late summer. Entry forms may be obtained from the Commission office.

10. COUNTY PARKS IN GARFIELD

Dahnert's Lake

Midland Avenue

The pond is the center of activity. It affords ice skating, duck feeding, fishing, and model boat sailing.

The park has picnic facilities and a children's playground.

Belmont Hill

Botany Street

A hilltop rose garden containing more than 55 rose varieties attracts many visitors in June and early fall. The park also has a scenic lookout, children's play equipment, and picnic tables.

11. OVERPECK COUNTY PARK

This 838-acre meadowland site is being developed gradually as Bergen County's central park with a variety of recreation facilities. A 150-acre boating lake is being excavated by stages. Current facilities include:

Overpeck Bergen County Golf Course

East Cedar Lane, Teaneck

There are two ponds, two lagoons, and an 8-acre lake on this 18-hole course. The contemporary redwood golf house contains a lounge, snack bar, deck, and pro shop.

Athletic Fields

Roosevelt Street, Palisades Park

Sodded baseball and football fields with bleachers are the initial facilities in this complex. A field house is planned.

Family Recreation Area

Fort Lee Road, Leonia

This small park area contains a baseball field, picnic facilities, and a rink which is flooded in winter for ice skating.

Adjacent to this area there will be a wildlife refuge with a board walk.

12. WALLINGTON COUNTY PARK

Maple Avenue, Wallington

The pond is used for ice skating, fishing, and model boat sailing. Sledding slopes make this an all-season park. It has baseball, football, and picnicking facilities and a children's playground.

A new ball field and tennis courts are to be added.

13. RIVERSIDE COUNTY PARK

Both the North and South Areas of this southwest Bergen park are on the Passaic River.

North Area

Riverside Avenue, Lyndhurst

A fenced sodded ball field with lights for night games is one of the newest facilities at this area. Other facilities include picnic tables, fields for baseball and softball and football, a rink which is flooded for ice skating, tennis courts, shuffleboard and horseshoe courts, a children's playground, and a portable volleyball net.

South Area

River Road, North Arlington

A children's railroad is the new attraction here. The area also has picnic facilities, portable tennis nets, fields for baseball and softball and football, a rink which is flooded for ice skating, a children's playground, and horseshoe courts.

Tennis courts will be added in 1972.



Bergen County Park Commission Annual Report, 1971
