

Annual Report, 1970
Bergen County Park Commission

Bergen County Park Commission

PARK COMMISSIONERS — 1970

Frederick E. Wendel, President

James P. Miller, Vice President

Otto C. Pehle, Secretary

Frank P. Quintano, Ass't. Secretary

Richard Norman

James A. McFaul,
Executive Director

Roy Woodward

George Warchol

Lawrence E. Nyland

Mrs. Ina Albert

John A. Spizziri,
Ass't. County Counsel

BOARD OF CHOSEN FREEHOLDERS — 1970

William D. McDowell, Director

Frank A. Buono, Jr.

June M. Clark (Mrs.)

Franklin H. Cooper

Henry L. Hoebel, Chairman,

Park and Recreation Committee

Richard L. Nelson
Executive Administrator

Walter Marut

Harry Randall, Jr.

Thomas E. Stagnitti

Victor M. Williams

Michael J. Ferrara
County Counsel

NATURE CLASSES are offered at the Bergen County Wildlife Center and Campgaw Mountain County Reservation for vacationing pupils in grades 1-6. Public walks and programs are conducted on weekends, and special programs are scheduled on weekdays for school classes and other groups.

COVER PICTURE: Cyclists take a streamside ride in Saddle River County Park's Rochelle Park Area, which had its formal opening in 1970. This is the park's fifth recreation area.

FREE TENNIS CLINICS for Bergen residents aged 8-18 are conducted all summer at Van Saun County Park. Park Commission registration is a requisite.

Serving the Public, Present and Future

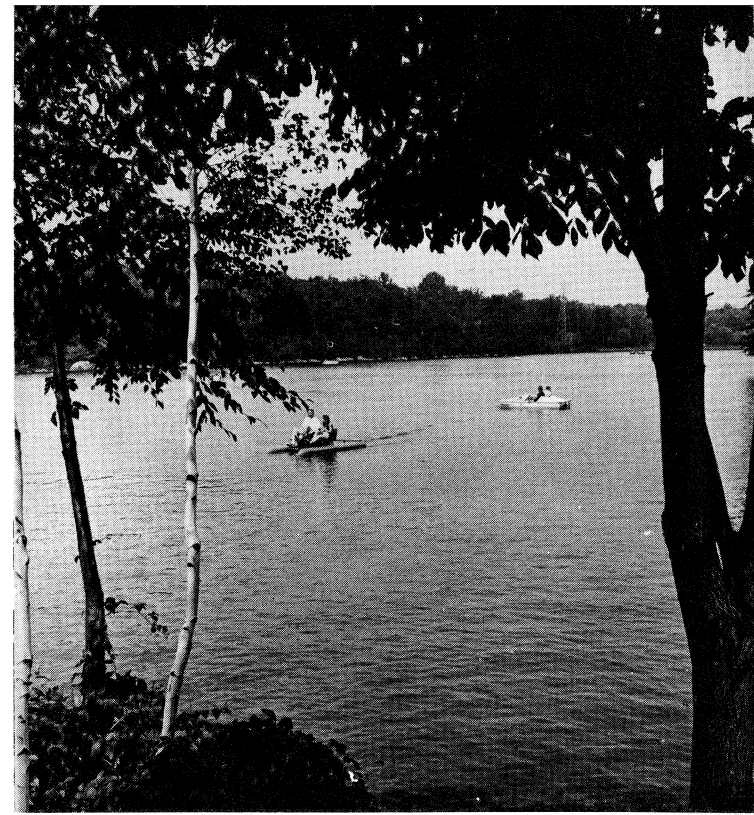
The Bergen County Park Commission is concerned with open space and recreation needs of generations yet unborn as well as with today's parks and with current and projected construction.

Development of Overpeck County Park has top priority because it affords our only opportunity for a big recreation complex in densely populated Southeast Bergen. The focal point will be the 150-acre boating lake which is gradually taking shape on the 838-acre meadowland site.

Among other projects in our park system's future are a horseback riding center, a sixth recreation complex in Saddle River County Park, an indoor ice rink, and a garden center. We are looking for affordable ways of meeting the need for additional swimming and golfing facilities.

In cooperation with the Board of Freeholders, the Park Commission is developing new recreation facilities, looking into new site possibilities, and studying anticipated long-range needs while keeping our current parks up to the highest standards and responding to the needs and wishes of today's residents.

Frederick E. Wendel
President



PEDAL BOATS and row boats are rented at Darlington County Park's largest lake. The other two lakes are equipped for swimming.

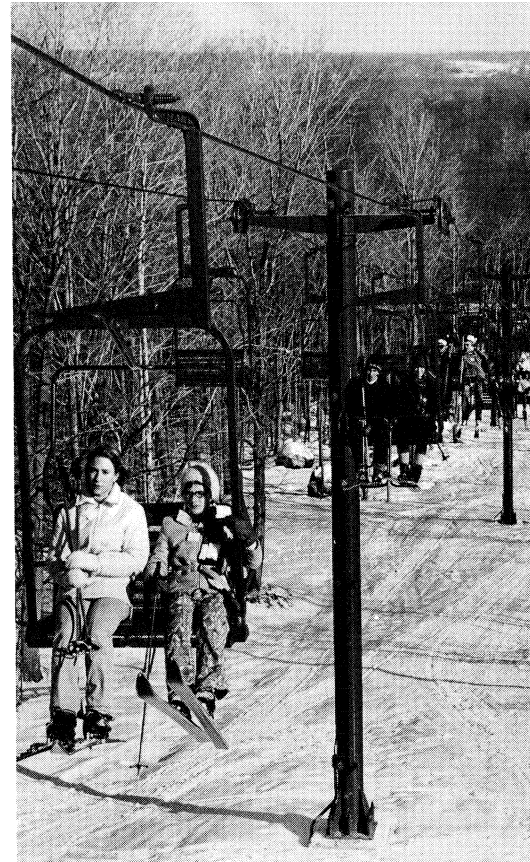
MODEL BOATS set sail at Wood Dale County Park. The County park system has seven ponds suitable for model-boat sailing.





A ROPE TOW is added to supplement the T-bar lift at Campgaw Mountain Ski Center's school slope.

THE NEW CHAIR LIFT at Campgaw Mountain Ski Center lets skiers off at mid-slope as well as at the summit. Both chair lifts operate at peak times.



Park System Expansion Gains Voter Approval

Bergen County voters made the year's most significant contribution to the County park system when they approved a \$5 million increase in the Park Commission's bonding limit, doubling the borrowing capacity for parkland acquisition and park development.

In 1970 the Park Commission opened a new athletic field complex in Palisades Park and a new streamside park area in Rochelle Park, and

the Commission expanded ski center facilities at Campgaw Mountain County Reservation.

A refrigerated toboggan chute complex, the first facility built and operated under a leasing agreement with the Park Commission, was completed at Campgaw Reservation.

Van Saun County Park's cafeteria-style food-service building opened on Memorial Day. The colonial-style building is convenient to the popu-

lar children's zoo.

At Dahnert's Lake a by-pass installation to eliminate thermal pollution and water motion during the ice skating season was completed in time for December skating. with picnic areas along it, four rustic shelters, a children's playground,

Construction of a children's railroad at Riverside County Park's South Area was nearing completion at the end of the year.

The athletic field facility in the Palisades Park portion of Overpeck Park has sodded football and baseball fields, bleachers for 1,600 spectators, parking areas, and eight acres of grass. A field house, landscaping, and fencing are to be added in the next stage. Later stages will include other athletic fields, a running track, more bleachers, and an open play area.

The new streamside project in Rochelle Park is Saddle River County Park's fifth recreation area. Initial facilities include a mile-long drive and a rink which is flooded in winter for ice skating. A contract was awarded for construction of the comfort station.

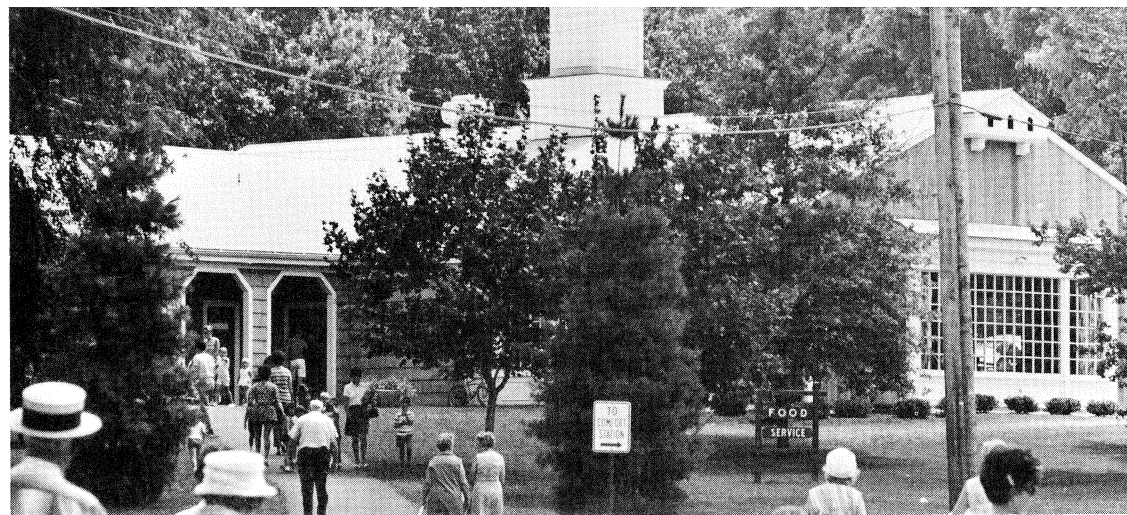
At Campgaw Mountain Ski Center a second chair lift and a rope tow were added. The rope tow serves a newly cleared school slope section some 800 feet long. The new chair



SKATERS GLIDE over the rink at Saddle River County Park's new Rochelle Park Area.

THRILL SEEKERS plunge down the new refrigerated toboggan chutes at Campgaw Mountain Reservation.

PATRONS of Van Saun Park's new food-service building may eat at conventional tables indoors or picnic tables outdoors.



ducted free tennis clinics all summer for Bergen residents aged 8-18 with Park Commission registration.

Free summer nature classes were offered at Campgaw Mountain Reservation as well as at the Bergen County Wildlife Center for Bergen residents in grades 1-6. Public nature walks and programs were scheduled on weekends, and Park Commission naturalists conducted 640 special programs for approximately 20,000 school children and 70 programs for some 4,000 members of other groups. An anti-pollution poster contest had 200 student entrants.

There were 140 entrants in the Park Commission's outdoor art show August 15 at Van Saun Park. Professional band concerts were presented at Van Saun Park and at Wild Duck Pond in Ridgewood. A slide program on the County park system was prepared for presentation to clubs and organizations.

The parks were host to many events, including a trout-fishing contest, a 4-H fair, and a County-wide

senior citizens' outing. The zoo's annual sheep shearing attracted busloads of school children.

The Park Commission received bids for lake excavation, park site-work, and drive construction at Pasack Brook County Park and advertised for proposals for an indoor ice rink at this park.

Work in the parks in 1970 included completion of a second live-animal shelter at the Wildlife Center, clearing along Ho-Ho-Kus Brook on the Saddle River County Park site, continuation of preliminary planting for the garden center which will share a park site with the Wildlife Center, other planting throughout the park system, erection of maintenance structures, necessary carpentry and sign work, and drainage and utility and fencing installations.

Emergency telephones and bright entrance lighting were installed at key points as safety precautions.

Two pumps were placed in the Wildlife Center's waterfowl pond to keep an area free of ice.

Purchases included recreation equipment, tons of fertilizer and seed, trucks, tractors, mowers, snow plows, aerators, sprayers, refuse units, saws, and uniforms.

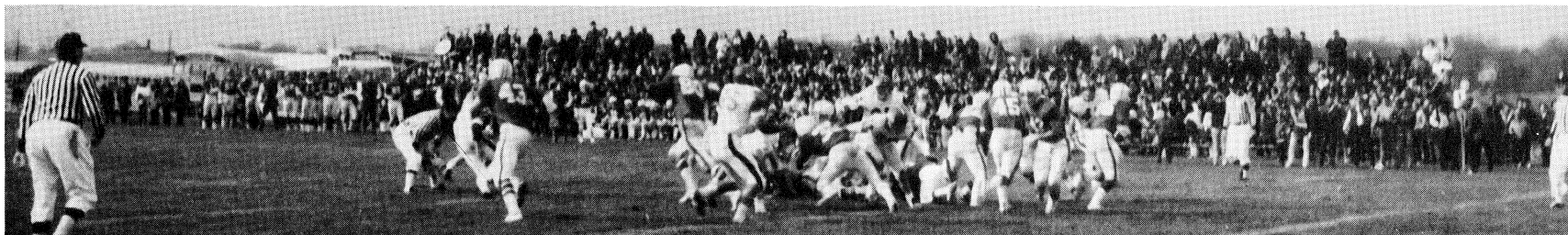
The County Treasury received \$968,866 in County park fees during the fiscal year ending November 30. This represents a 10.99 per cent increase over 1969's \$872,935. The number of fees paid was 774,821, an increase of 11.11 per cent over the 697,365 in 1969. Campgaw Mountain Ski Center had a 31.38 per cent increase in receipts. Other increases included: 25.41 per cent at the tennis center in Van Saun Park, 12.25 per cent at Rockleigh County Golf Course, 10.14 at Darlington Park (swim season), 8.52 per cent at Orchard Hills County Golf Course, and 3.73 per cent at Overpeck County Golf Course. The greatest increase, 38.58 per cent, was in receipts from permits issued for organization picnics and other park-use permits.

The Park Commission issued 5,000 park-use permits, chiefly for picnics.

lift, which can let off skiers at mid slope as well as at the summit, is at the north end of the main slope. Additional snow-making equipment permits spraying of machine-made snow on the north slope and north trail.

A topography study was made in 1970 for the projected horseback riding center at Campgaw Reservation.

At Van Saun Park the tennis center's 12 courts were resurfaced. As in previous years, the center con-



SODDED FOOTBALL and baseball fields were added to Overpeck County Park in 1970. Entry is from Roosevelt Street, Palisades Park.

Rx for fitness:

Outdoor exercise taken regularly

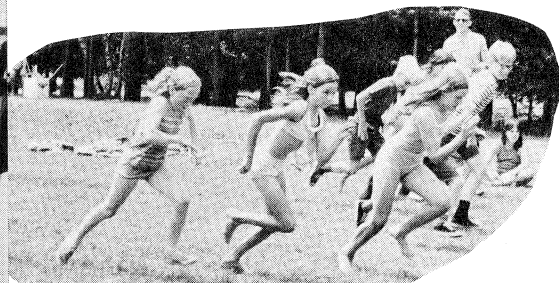
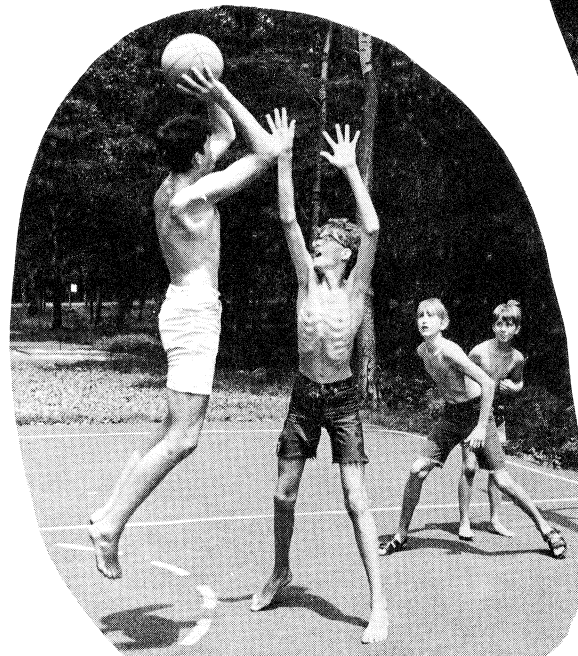
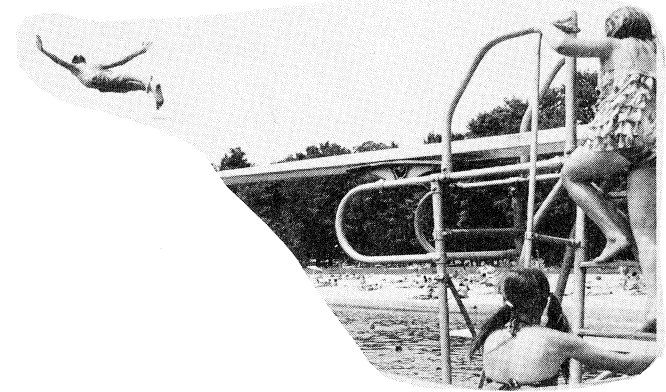
Medical authorities make it clear that the sedentary life of this push-button era is bad for us. Our muscles require use, and exercise is vitally important to the muscle that is our heart.

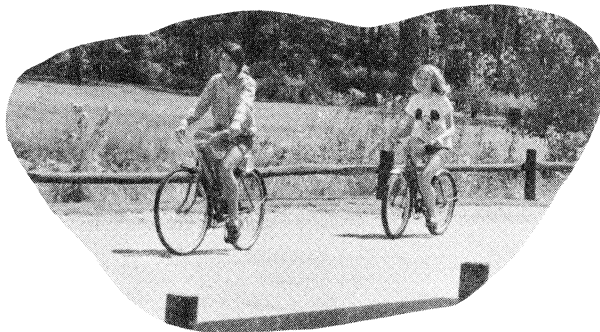
Some of us get enough exercise in sports and play. For the rest of us, doctors say, a daily brisk walk will do nicely.

Seven of our County park areas have lakeside paths for safe and pleasant walking or jogging: Dahnert's Lake County Park on Midland Avenue, Garfield; in Saddle River County Park the Glen Rock Area on Alan Avenue near Prospect, the Saddle Brook Area on Saddle River Road, and Wild Duck Pond on East Ridgewood Avenue, Ridgewood; Van Saun County Park on Forest and Continental Avenues, Paramus and Howland Avenue, River Edge; Wallington County Park on Maple Avenue; and Wood Dale County Park on Prospect Avenue, Woodcliff Lake. Plans call for a path around the lake currently being excavated at Pascack Brook County Park on Emerson Road, Westwood.

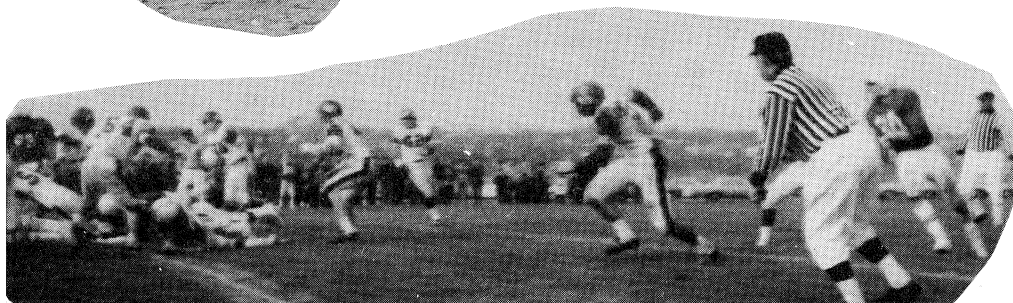
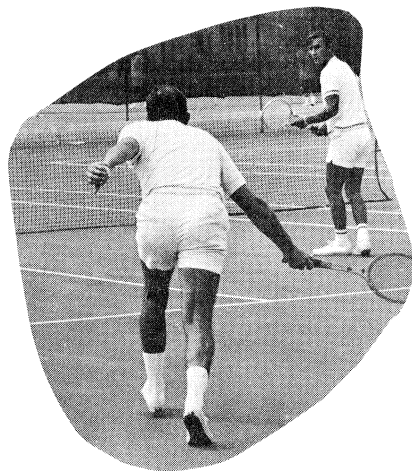
The Bergen County park network contains facilities for most popular outdoor sports. If you don't find what you want, speak up. The Park Commission gives full consideration to all suggestions.

CAUTION: Check with your doctor before you start an exercise program.





*The Daily Dozen
Takes Many Forms*





ALL ABOARD the children's railroad train now loading at the Van Saun Park depot.

PETUNIAS fill flower beds on the zoo mall at Van Saun Park after the 5,000 tulip blooms have faded.



CONDENSED STATEMENT OF PROPERTIES COMMITTED OR ACQUIRED FOR PARK PURPOSES COMBINED BOND, BUDGET AND OTHER CAPITAL FUNDS

Close of December 31st, 1970

AREA	SUB-TOTAL		TOTALS	
	Acreage	Cost	Acreage	Cost
OVERPECK CREEK				
Private properties purchased	100.82	\$ 458,874.00		
Municipal properties donated or committed	721.63	—0—		
State Tidal Lands purchased	—0—	400,000.00		
			822.45	\$ 858,874.00
PASSAIC RIVER				
Private properties purchased	49.86	121,320.00		
Private properties donated	0.07	1.00		
Municipal properties donated or committed	80.94	—0—		
			130.87	121,321.00
SADDLE RIVER				
Private properties purchased	496.59	605,255.00		
Private properties donated	10.01	1.00		
Municipal properties donated	66.61	3,000.00		
			573.21	608,256.00
SOUTHWEST BERGEN				
Private properties purchased	Z —0—	2,200.00		
Municipal properties donated	18.53	2.00		
			18.53	2,202.00
VAN SAUN				
Private properties purchased or committed	138.33	204,711.73		
Private properties donated	1.25	—0—		
			139.58	204,711.73
NORTHWEST BERGEN				
Private properties purchased	1,603.67	2,591,731.71		
Municipal properties donated	8.07	—0—		
			1,611.74	2,591,731.71
NORTHEAST BERGEN				
Private properties purchased	438.00	1,097,806.75		
Private properties donated	14.11	—0—		
Municipal properties donated	0.32	—0—		
			452.43	1,097,806.75
PASCACK BROOK				
Private properties purchased	24.67	53,221.88		
Municipal properties donated	115.46	—0—		
			140.13	53,221.88
PASCACK VALLEY				
Private properties purchased	109.98	232,869.00		
Private properties donated	0.88	—0—		
Municipal properties donated	6.69	—0—		
			117.55	232,869.00
HACKENSACK RIVER				
Private properties purchased			0.08	10.00
ALL AREAS				
Legals, Advertising, Engineering, etc.			—0—	43,824.04
			4,006.57	\$5,814,828.11

(Z) The 0.12 acres originally purchased for \$2,200.00 was sold at Public Sale for \$3,100.00 and proceeds credited to Capital Funds Surplus.

BERGEN COUNTY PARK COMMISSION
LAND ACQUISITION
SUMMARY
SOURCE OF APPROPRIATIONS AND DISBURSEMENTS

Close of December 31st, 1970

DESCRIPTION	Acreage	Disbursements	Appropriations
APPROPRIATIONS			
Park Commission Bond Funds (As Adjusted)			\$3,989,312.50
Miscellaneous appropriation to Bond Account			
Re: Land Reclamation Corp. Prop. taxes			256.98
Park Commission Budget Funds			182,967.60
State of N. J. Green Acres Assistance Program			
(Joint Closing Account)			1,105,000.00
Capital Funds Surplus, Re: Green Acres			170,000.00
Capital Funds Surplus (Budget)			932.00
Capital Funds Surplus, Re: Federal Open Space			
Land Program			189,068.00
Trust Account, County Parks, Re: State of N. J.			
Route #95, Overpeck above 2.93 El.			199,985.00
Trust Account, County Parks, Re: Green Acres,			
Overpeck, Tidal Lands			200,000.00
DISBURSEMENTS			
<i>Private Properties Committed or Acquired</i>			
Bond Account	2,865.71	\$5,192,141.96	
Budget Account	122.61	175,860.11	
<i>Municipal Properties Committed or Acquired</i>			
Bond Account	1,018.25	3,000.00	
Budget Account	—0—	2.00	
<i>State Bureau of Navigation, Tidal Lands Acq.</i>			
Trust Account	—0—	199,985.00	
Green Acres Account	—0—	200,000.00	
Budget Account	—0—	15.00	
<i>Legals, Adv. Engineering, etc.</i>			
Bond Account		36,733.55	
Budget Account		7,090.49	
	<u>4,006.57</u>	<u>\$5,814,828.11</u>	<u>\$6,037,522.08</u>
Dec. 31, 1970 To Balance (Available Bond Funds on hand)		222,693.97	
	<u>4,006.57</u>	<u>\$6,037,522.08</u>	<u>\$6,037,522.08</u>

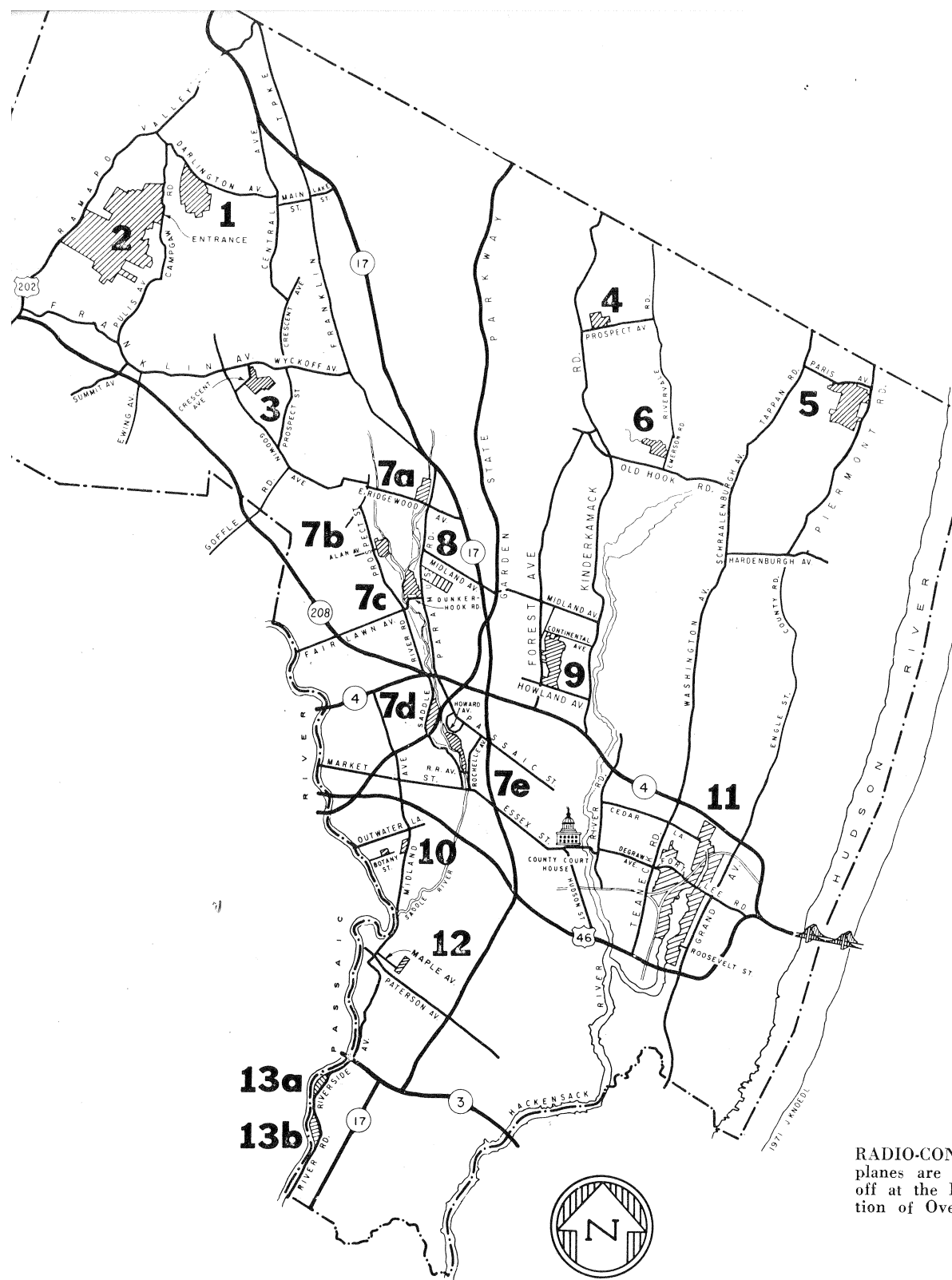


PICTURES from 140 entrants were displayed at the Park Commission's 1970 outdoor art show at Van Saun Park.

AUDIENCES are casual and relaxed at band concerts in the County Park.



Bergen County



1. DARLINGTON COUNTY PARK

Darlington Avenue, Mahwah

There is swimming in two of the three lakes on this rolling site in foothills of the Ramapo Mountains. The third lake affords fishing and rental boating. There is an entrance fee during the swimming season. Memorial Day weekend-Labor Day. The park has sand beaches, picnic groves, a fieldhouse with snack bar and open terraces, pavilions, children's playgrounds, and courts for tennis, handball, volley ball, shuffleboard, basketball, and horseshoe pitching.

The park is closed December 1 - March 31.

2. CAMPGAW MOUNTAIN COUNTY RESERVATION

Campgaw Road, Mahwah

This 1,307-acre wooded park is the largest property in the County Park system. It has hiking trails campsites (some with tent platform or adirondack shelter), picnic facilities, a 4½-mile bridge trail, and children's rustic play equipment. The visitors' center, a ski shelter in winter, is utilized for nature education in other seasons. A horseback riding center is to be added to the park.

SKI CENTER: The 1,650-foot main slope and 2,000-foot north trail with chair lifts and the 600-to-800-foot school slope with T-bar lift and rope tow are supplied with machine-made snow. The visitors' center has a wood fire in the lounge, a snack bar, and a shop which rents and sells skiing equipment. Expert instruction is available.

TOBOGGAN CHUTES: The 1,100-foot chutes are artificially iced. There is a warming building. Rates are posted by the lessee.

NATURE EDUCATION: Specialized nature walks for the public are listed at the Wildlife Center. Summer nature classes and special programs for school classes and other groups are other Campgaw activities, all arranged at the Wildlife Center.

3. BERGEN COUNTY WILDLIFE CENTER

Crescent Avenue, Wyckoff

Visitors can see and learn about wildlife of this area's natural habitat. The exhibit hall, which overlooks the waterfowl pond, has a meeting room and a browsing library. Naturalists are in attendance.

Outside there are shelters for live animals and birds and a 2/3-mile nature walk with trail guide. There are some picnic tables.

The center offers public programs and classes and also schedules special programs for school groups and for organizations.

4. WOOD DALE COUNTY PARK

Prospect Avenue, Woodcliff Lake

The pond is the main attraction at this family recreation area. In winter the pond is a popular ice skating area. In other seasons young people fish and sail model boats at the pond, and feed the ducks.

The park has free tennis courts, picnic facilities, and a children's playground.

5. ROCKLEIGH BERGEN COUNTY GOLF COURSE

Paris Avenue, Rockleigh

Lines form early at this 27-hole rolling course at the base of the Palisades' western slope.

The stone fieldhouse has a snack

RADIO-CONTROLLED model planes are prepared for take-off at the Palisades Park section of Overpeck Park.



Park System

bar and pro shop. Golf cars and carts are available for rental.

6. PASCACK BROOK COUNTY PARK

Emerson Road, Westwood

Construction is under way for a family recreation area with a pond, playground, and picnic and tennis facilities.

An indoor skating rink is planned for this park.

The park has two ball fields and bleachers.

7. SADDLE RIVER COUNTY PARK

This linear park will eventually flank Saddle River for 5½ miles, and will have scenic drives and paths. The park has five recreation areas, and a sixth is to be added before long.

a. Wild Duck Pond Area

East Ridgewood Avenue, Ridgewood

Ducks abound on the pond, which is a popular center for ice skating and fishing as well as for duck feeding.

The park area has extensive picnic facilities, a large children's playground, and shuffleboard and horseshoe courts. A recreation room is available for scheduled meetings.

b. Glen Rock Area

Alan Avenue, just east of Prospect Street

Here too the pond is the focal point, affording duck feeding, fishing, and model boat sailing. The area has picnic facilities and a children's playground.

c. Dunkerhook Area

Dunkerhook Road, Paramus

The cool shade of wooded picnic areas is especially welcome on a hot day.

Ducks in the area's winding stream look for handouts from park visitors. The area has a children's playground and horseshoe courts.

The Commission plans to add a paved rink which will be flooded in winter for ice skating.

d. Saddle Brook Area

Saddle River Road, Saddle Brook
Picnic groves and a fishing lake are the most popular attractions here. Model sailboat regattas may sometimes be seen on the lake. Duck feeding is a favorite pastime. There is a bicycle and pedestrian path around the lake.

The area has a children's playground and facilities for baseball, football, ice skating, and horseshoe pitching.

e. Rochelle Park Area

Railroad Avenue

There are picnic tables along the 1-mile streamside park drive. Initial facilities at this new area include a children's playground and a rink which is flooded in winter for ice skating.

A PROJECTED SIXTH RECREATION AREA, between Glen Rock and Dunkerhook Areas, will have tennis courts, picnic facilities, ball fields, and a playground.

A bicycle path from the Glen Rock Area to the Dunkerhook Area is also planned.

Tower Restoration, Arcola, Paramus

The tower and paddle wheel, focal points of the famed Easton gardens, were reconstructed above the ruins of the original complex built circa 1900 near the site of the historic 1745 Red Mill. The reconstructed landmark may be seen from Saddle River and Paramus Roads south of Route 4.

8. ORCHARD HILLS

BERGEN COUNTY GOLF COURSE

Paramus Road, Paramus

Mature trees and shrubs grace this nine-hole course on Bergen Community College property. The Park Commission renovated the course and is operating it under a 5-year contract with the College.

As at all County courses, the greens fee is for the day rather than the round.

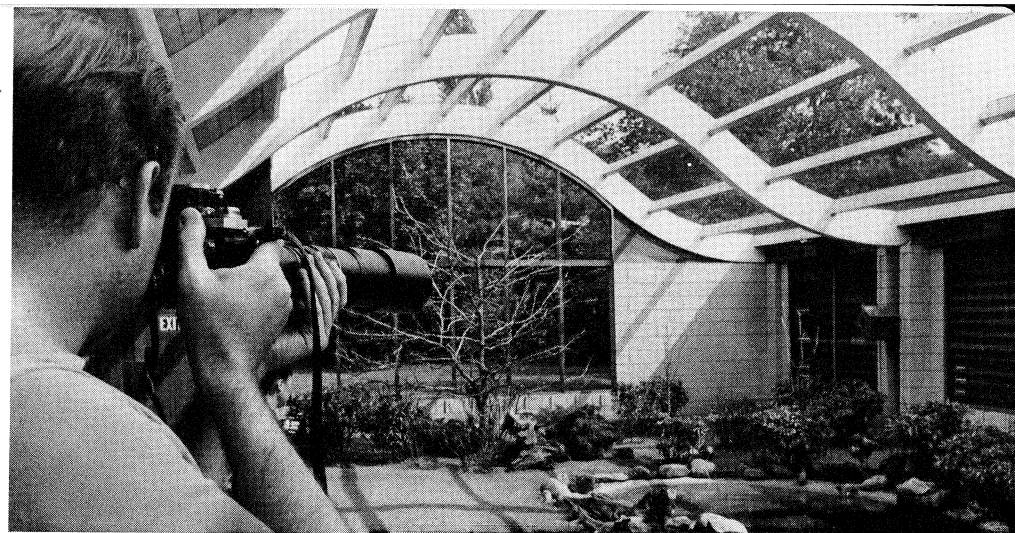
The golf house has food vending machines and a small pro shop.

9. VAN SAUN COUNTY PARK

Entrances on Forest and Continental Avenues, Paramus, and Howland Avenue, River Edge

This is our most popular and most complete County park. The children's zoo and children's railroad are perhaps the best known features. The train tracks form a loop around the zoo, a walk-through aviary, and an 1860s' farmyard scene.

A 12-court tennis center, a 6-acre lake which affords fishing and ice skating, picnic groves, a large children's playground, and a shaded garden around historic Washington Spring are among other features of the park.



BIRDIE, LOOK at the camera! An occupant of the Van Saun Park aviary is captured on film.

Pony rides and horseback riding lessons are available.

Park facilities include a snack shop, shuffleboard and horseshoe courts, sledding slopes, ball fields, and an open play area.

10. COUNTY PARKS IN GARFIELD

Dahner's Lake

Midland Avenue

The pond is the center of activity. It affords ice skating, duck feeding, fishing, and model boat sailing.

The park has picnic facilities and a children's playground.

Belmont Hill

Botany Street

A hilltop rose garden containing more than 55 rose varieties attracts many visitors in June and early fall. The park also has a scenic lookout, children's play equipment, and picnic tables.

11. OVERPECK COUNTY PARK

This 838-acre meadowland site is being developed gradually as Bergen County's central park with a variety of recreation facilities. A 150-acre boating lake is being excavated by stages. Current facilities include:

Overpeck Bergen County Golf Course
Cedar Lane, Teaneck

There are two ponds, two lagoons, and an 8-acre lake on this 18-hole course. The contemporary redwood golf house contains a lounge, snack bar, deck, and pro shop.

Athletic Fields

Roosevelt Street, Palisades Park

Sodded baseball and football fields with bleachers are the initial facilities in this complex. A field house is planned.

Family Recreation Area

Fort Lee Road, Leonia

This small park area contains a baseball field, picnic facilities, and a rink which is flooded in winter for ice skating.

Model Plane Flying

Roosevelt Street, Palisades Park

Permit holders may fly their radio-controlled model planes here.

12. WALLINGTON COUNTY PARK

Maple Avenue, Wallington

The pond is used for ice skating, fishing, and model boat sailing. Sledding slopes make this an all-season park. It has baseball, football, and picnicking facilities and a children's playground.

A new ball field and tennis courts are to be added.

13. RIVERSIDE COUNTY PARK

Both the North and South Areas of this southwest Bergen park are on the Passaic River.

North Area

Riverside Avenue, Lyndhurst

A fenced sodded ball field with lights for night games is one of the newest facilities at this area. Other facilities include picnic tables, fields for baseball and softball and football, a rink which is flooded for ice skating, tennis courts, shuffleboard and horseshoe courts, a children's playground, and a portable volleyball net.

South Area

River Road, North Arlington

A children's railroad is the new attraction here. The area also has picnic facilities, portable tennis nets, fields for baseball and softball and football, a rink which is flooded for ice skating, a children's playground, and horseshoe courts.



Bergen County Park Commission Annual Report, 1970