

Bergen County Park Commission
Annual Report, 1969

BERGEN COUNTY PARK COMMISSION, 1969 HACKENSACK, NEW JERSEY

Frederick E. Wendel, President

Bernard H. Johnson, Vice President

Lawrence E. Nyland

Otto C. Pehle, Secretary

Roy Woodward

Frank P. Quintano, Assistant Secretary

George Warchol

Richard Norman

James P. Miller

James A. McFaul,
Executive Director

Walter M. D. Kern, Jr.
Assistant County Counsel

BOARD OF CHOSEN FREEHOLDERS, 1969

Henry L. Hoebel, Director

Frank Perrotta, Jr.

Franklin H. Cooper

Benjamin Walenczyk, Chairman

William J. Dorgan

Park and Recreation Committee

William D. McDowell

Frank A. Buono, Jr.

Anthony J. Statile

Mrs. June M. Clark

Frank C. Osmer, Jr.,*

Pierre P. Garven*
County Counsel

Executive Administrator

Richard L. Nelson**

Michael J. Ferrara**
County Counsel

Executive Administrator

* Resigned June 1969

** Appointed July 1969

COVER PICTURE: Campgaw Mountain Ski Center, which opened January 8, 1969, proved so popular that plans for expansion were on the drawing boards by the end of the year. The 1,650-foot main slope and 600-foot school slope are supplied with machine-made snow. The complex includes a chair lift and a T-bar lift and a parking area for 700 cars.

DAFFODILS DEBUT: Some 12,000 bulbs bloomed for the first time at the Wyckoff site of the projected County garden center.

YOUNG CAMPERS enjoy a cookout at Campgaw Mountain Reservation. The campsite fee is waived for recognized Bergen youth groups.

The Welcome Mat is Out

We are happy to report that many new faces were seen in the County parks in 1969.

Skiers lost no time in discovering the slopes on Campgaw Mountain. South Bergen residents took advantage of the new bus routes to three popular parks. Senior citizens welcomed their halved bus fares and halved weekday entrance fees at Darlington Park.

The new aviary at Van Saun Park has intrigued visitors of all ages, and all ages have been well represented at the wildlife center nature programs.

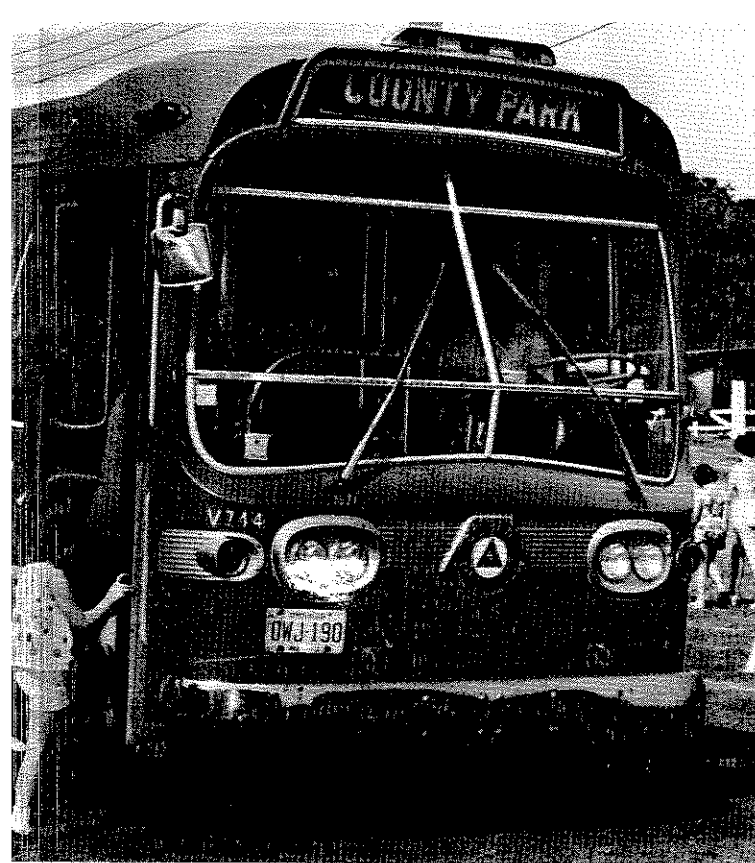
Model speedboat racing enthusiasts made the Saddle Brook park area their headquarters in 1969. Owners of radio-controlled model planes were happy to gain a flying field in Overpeck Park.

Enjoyment of our parks is being extended to an ever-increasing number of residents. As the County park system develops and matures, it reaches out to more and more interests, more and more needs. Our goal is to provide something of value for all Bergen residents. These are their parks.

Frederick E. Wendel
President

BUS SERVICE from South Bergen to three County parks was initiated in 1969 by the Board of Freeholders.

A WOOD FIRE warms skiers relaxing in the new year-round visitors' center at Campgaw Mountain Reservation.



THE SKI CENTER IS A BIG HIT

Popularity of Campgaw Mountain Ski Center was the County park system's most exciting development in 1969. The center, which opened January 8, attracted skiers in such large numbers that expansion plans were being drawn by the end of the year.

Machine-made snow is sprayed on the 1,650-foot main slope and 600-foot school slope. A chair lift serves the main slope, and there is a T-bar lift at the school slope.

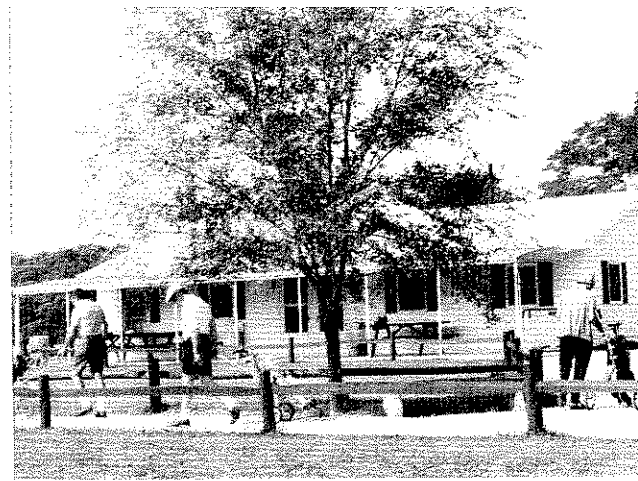
The ski center is in Campgaw Mountain County Reservation. At the foot of the school slope is the contemporary two-level visitors' center which serves as a skiers' shelter in winter and is utilized the rest of the year by hikers, nature students, and other visitors. Erected in 1968, the building was furnished in 1969 and a paved path system was added outside.

Adjacent to the ski center, refrigerated toboggan chutes began to take shape in 1969. This complex is being built under lease contract with the Park Commission.

NEW AVIARY AND GOLF COURSE

A walk-through aviary at Van Saun Park and a nine-hole golf course on the Bergen Community College site were opened in the spring by the Park Commission. The aviary, in the zoo area, has only a low railing separating the spectator walkway from the arched landscaped flight cage. Orchard Hills Golf Course on the college grounds will be operated by the Park Commission for a minimum of five years. The Commission renovated and revised the course and installed and converted a prefabricated unit to serve as the temporary fieldhouse. The building will be moved to a park when the college reclaims the golf course area.

Overpeck Park development in 1969 included athletic field construction in the Palisades Park section of the park and excavation work on two 30-acre portions of a projected 150-acre boating lake. Also, the Park Commission acquired a 4-acre junk yard which jutted into the park. The Commission demolished the junk yard building.



THE FIELDHOUSE
at Orchard Hills
County Golf Course
will be moved to a
park when Bergen
Community College
reclaims the property.

The football and baseball fields under construction in the Overpeck are scheduled for completion in the fall of 1970. Contracts were let in 1969 for installation of irrigation facilities, for topsoil, and for seeding and sodding.

ATHLETIC FIELDS IN OVERPECK

An access road from Roosevelt Street, a parking area, and bleachers for 1,600 spectators as well as the two ballfields will comprise the first stage of the park's athletic field complex. Other stages will include a park drive, a fieldhouse, a soccer field, additional baseball fields, and an open play area.

Among Park Commission construction projects in 1969 were a colonial-

style food-service building scheduled for completion in the spring of 1970 in the zoo area of Van Saun Park and a second octagonal live animal shelter at the Bergen County Wildlife Center.

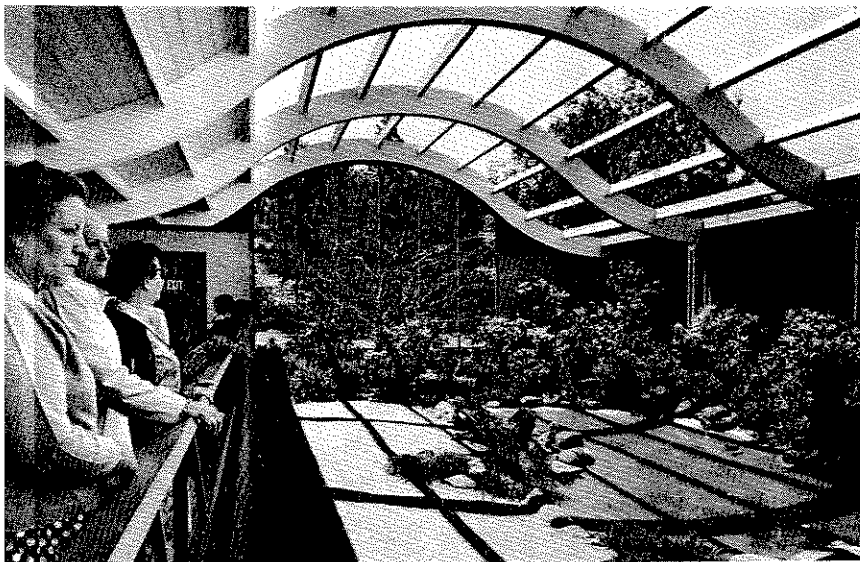
Other construction included completion of a 65-foot park-access bridge across Sprout Brook in Rochelle Park, erection of maintenance buildings in five County park areas, building of foot bridges on the Overpeck and Rockleigh County Golf Courses, and erection of a windbreak shelter atop the ski slopes.

A quarter-mile oval for model speedboat racing was marked with buoys at Saddle River County Park's Saddle Brook Area, and a flying field for radio-controlled model planes was established in Overpeck Park.

A 65 - FOOT BRIDGE
across Sprout Brook will
provide access to the
Rochelle Park Area of Saddle
River County Park.

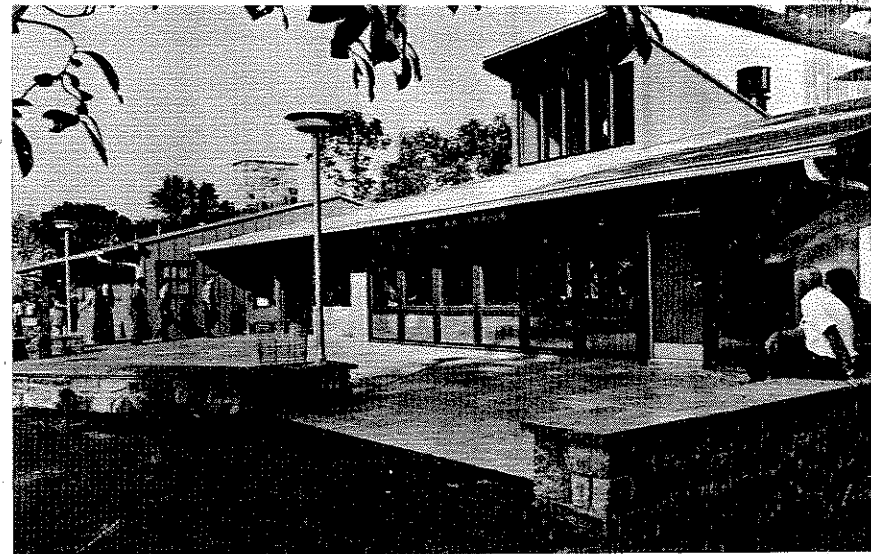
A FOOD-SERVICE building
rises in the zoo area
at Van Saun Park. Opening
is scheduled for spring
of 1970.





The Record Photo
AVIARY visitors
 watch occupants of
 the new arched
 landscaped flight
 cage at Van Saun
 Park.

THE RUSTIC visi-
 tors' center at
 Campgaw Moun-
 tain Reservation
 blends with the
 woody setting.



Preliminary plans were made for a children's railroad beside the Passaic River, in Riverside Park South.

BUS SERVICE TO THREE PARKS

County-sponsored bus service from South Bergen to Van Saun and Darlington County Parks and the wildlife center was initiated by the Board of Freeholders and was a popular success. Senior citizens and children paid half fare.

A new Park Commission policy enabled Bergen senior citizens and clergy with Commission registration to visit Darlington on weekdays at half the swimming-season entry fee. A similar policy has been in effect for some time at the County golf courses.

The Park Commission sponsored professional band concerts, a big outdoor art show, free summer nature classes for school children, public nature programs and nature trail tours, and free tennis instruction for school children.

The County's Operation Outdoors program included a day camp project at Darlington Park.

PASCACK PARK SITEWORK

Sitework for Pascack Brook Park continued, with preparation of the base for a park drive and recreation areas. Plans call for a lake, additional ballfields, picnic and play areas, and tennis courts.

At Saddle River County Park's Glen Rock Area work continued on stream relocation and on land-clearing, filling operations, and drainage.

Park improvements in 1969 included removal of silt from the bottom of the main swimming lake at Darlington, road and path and parking area construction at Campgaw Reservation, Van Saun Park, and Riverside Park South, and paving of the Rockleigh course parking lot.

Among items on the long list of 1969 equipment purchases are tractors, trucks, landscapers, mowers, harrow, edger, spreaders, chain saws, generator, pump, air compressors, snow plow blades, row boats, pedal boats, playground equipment, and bleachers.

ANIMAL MOUTHS TO FEED

Maintenance expenses include fertilizer and grass seed by the ton,

thousands of dollars' worth of feed for the zoo and the wildlife center, building repairs and improvements, fencing, drainage work, and irrigation work.

Planting of rhododendron and azaleas began at the garden center site in Wyckoff, and another 1,000 daffodils were added to the 12,000 planted in 1968. In other park areas landscaping crews set in 12,450 flowering bulbs, also 160 shade trees, 70 flowering trees, 135 evergreens, and 300 flats of annuals.

The County Treasury received \$872,935.11 in revenue from County park fee facilities for the period ending November 30, 1969. This compares with \$692,272.06 for the pre-

ceding year. From its opening January 8 to November 30 the ski center grossed \$87,313.24. Darlington County Park's \$175,901.55 represented a 1 per cent increase over the preceding year. Overpeck County Golf Course, which opened in May of 1968, showed a 47 per cent increase over its first season with a 1969 gross of \$228,022.95. Rockleigh Bergen County Golf Course took in \$260,828.28 in 1969. Open only for 5 months, Orchard Hills Course grossed \$56,238.18.

Other revenue totals follow: Children's railroad, \$49,172.81; tennis center, \$7,784.10; park use permits (chiefly for group picnics and campsites), \$7,674.

LIVE ANIMALS will occupy the second octagonal shelter at the wildlife center.



Happenings In The Parks



A NATURE CLASS does most of its studying outdoors.

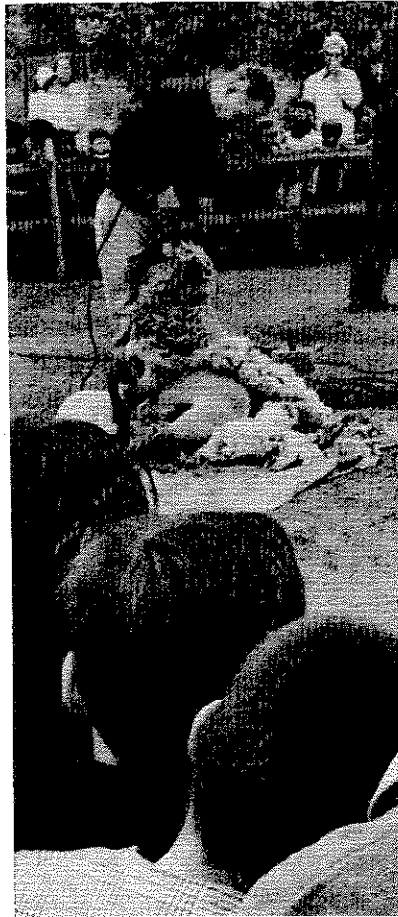
ALL AGES are represented in wildlife center audiences.



TENNIS CLINICS at Van Saun Park are free.



BOYS TURN OUT for a fishing demonstration.



The Record Photo
SHEARING of zoo sheep attracts quite an audience.

OUTDOOR ART SHOW entries don't lack for viewers.



YOUNGSTERS are set for a tour of the wildlife center nature trail.

Our visitors generally go to the park on the spur of the moment and "do their own thing" while there. Few are aware of the surprising variety of scheduled and special events in the County parks.

Free activities sponsored by the Park Commission include tennis clinics all summer for County residents aged 8-18, professional band concerts, an outdoor art show, nature classes for grades 1-6, illustrated nature programs for the public and by appointment for classes and other groups, and guided nature walks.

An unusual happening in 1969 was the release of some 500 Monarch butterflies at the wildlife center by famed naturalist Campbell Norsgaard.

The Commission co-operates in sponsorship of many events, including fishing contests and demonstrations, a lawn-building demonstration, a West Point Band concert, Cub Scout mini-olympics, a 4-H fair with a horse and dog show and a variety of exhibits, a celebrity tennis demonstration, tennis tournaments, and a Christmas-in-July party for dependant children.

Permits are obtained for many activities which attract spectators — among them an antiques fair, model speedboat racing, model sailboat regattas, flying of radio-controlled model planes, ball games, kite-flying rallies, camping instruction, and bird walks.



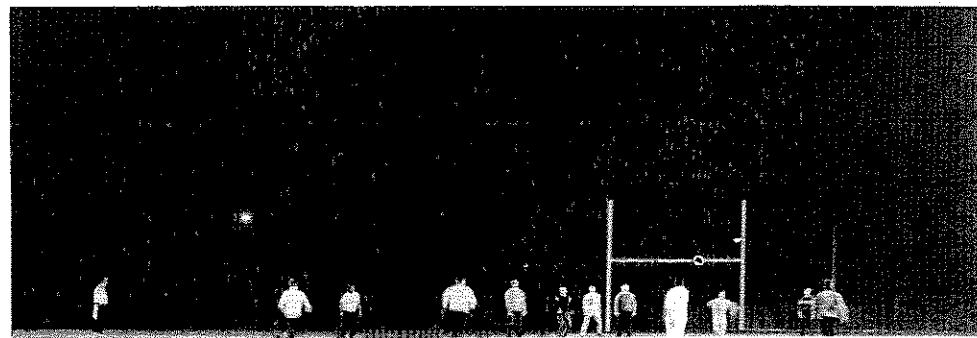
MUSIC fills the air on band concert days.



A MODEL SAILBOAT regatta makes a pretty picture.

MODEL SPEEDBOAT buffs have a new racing oval.

NIGHT BALL GAMES are played at Riverside Park North.



Bergen County Park System

Belmont Hill County Park

Garfield

Rose garden, scenic lookout, children's play equipment, picnic tables.

Bergen County Wildlife Center

Wyckoff

Waterfowl pond, nature walk, headquarters building overlooking pond. Exhibit hall, browsing library, meeting rooms in building. Naturalists in attendance. Live animal and bird shelters. Center offers public programs and classes, also schedules special programs for groups.

Campgaw Mountain County Reservation

Mahwah, Franklin Lakes, Oakland

Nature trails, picnic tables and fireplaces, picnic shelter, overnight camping sites (some with tent platforms or adirondack shelters), children's play equipment, visitors' center with lounge and snack facilities, 4½-mile bridle trail for permit holders, comfort station. Ranger service.

SKI CENTER: 1,650-foot main slope with chair lift, 600-foot school slope with T-bar lift. Both with machine-made snow. Visitors' center is used as ski shelter in winter, with wood fire, operating snack bar, ski shop which sells and rents equipment.

TOBOGGAN CHUTES, artificially iced, about 1,100 feet long, adjacent to ski slopes. Warming building. Under construction.

Dahnert's Lake County Park

Garfield

Pond affording ice skating, duck feeding, fishing, model-boat sailing. Picnic tables and fireplaces, children's play equipment, comfort station.

Darlington County Park

Mahwah and Ramsey

Three lakes, two for swimming and one for fishing and rental boating. Fieldhouse with snack bar and open terraces. Locker rooms, pavilion, comfort station, children's playground, picnic tables. Facilities for tennis, handball, volleyball, softball, shuffleboard, basketball, horseshoe pitching.

Entrance fee during swimming season, Memorial Day weekend - Labor Day. Park open without charge rest of May and September and all of April, October, and November.

Orchard Hills Bergen County Golf Course

Paramus

9 holes. Golf house with food vending machines. Small pro shop.

Overpeck County Park

Teaneck, Englewood, Leonia

Palisades Park, Ridgefield Park

Overpeck Bergen County Golf Course:

18 holes. Fieldhouse with lounge, snack bar, deck, pro shop.

Family Recreation Area:

Baseball, picnic tables and fireplaces, ice skating, basketball sets at rink.

Model-plane Flying:

Field for radio-controlled model planes. Access is from Roosevelt St., Palisades Park.

Athletic fields under construction in Palisades Park section. Opening scheduled for fall 1970.

Dredging under way for 150-acre lake included in master plan for a variety of recreation facilities on the 838-acre park site.

Pascack Brook County Park

Westwood and River Vale

Baseball, softball, football. The base is being prepared for a park drive and recreation areas.

Riverside County Park

North Area, Lyndhurst:

Picnic tables and fireplaces, picnic shelter, baseball, softball, football, ice skating, basketball sets and portable volleyball net at rink, shuffleboard and horseshoe courts, tennis courts, children's playground, comfort station. Ballfield with lights and bleachers for 1,600 spectators.

South Area, North Arlington and Lyndhurst:

Picnic tables and fireplaces, portable tennis nets, baseball, softball, football, children's playground, horseshoe courts, comfort station, two shelters.

Children's railroad in planning stage.

Rockleigh Bergen County Golf Course

Rockleigh, Northvale, Norwood

27 holes. Fieldhouse with snack bar, pro shop.

Saddle River County Park

Dunkershook Area, Paramus:

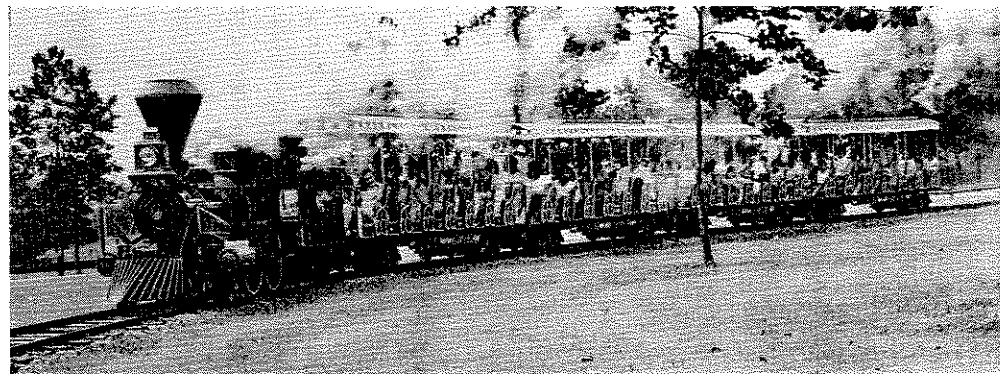
Picnic tables and fireplaces, two picnic shelters, duck feeding, children's playground, horseshoe courts, comfort station.

Glen Rock Area:

Lake affording duck feeding, fishing, model-boat sailing. Picnic tables and fireplaces, two shelters, children's play equipment, ice skating, comfort station.

Rochelle Park Area:

Ice skating, basketball sets at rink, children's playground, picnic tables and fireplaces.



A RIDE on the train brings joy to youngsters.

ALL ABOARD the rocket gym at Van Saun Park.

Saddle Brook Area:

Lake, duck feeding, fishing, model speedboat racing, model boat sailing, baseball, football, children's playground, ice skating, picnic tables and fireplaces, shelter, bicycle and pedestrian path around lake, horseshoe courts, comfort station.

Wild Duck Pond Area, Ridgewood:

Pond, ice skating, duck feeding, model boat sailing, fishing, picnic tables and fireplaces, shelter, shuffleboard and horseshoe courts, children's playground, recreation room, comfort station.

Tower Restoration, Arcola, Paramus:

Tower and paddle wheel, focal point of famed Easton gardens, reconstructed above ruins of the original built circa 1900 near the site of the historic 1745 Red Mill. May be seen from Saddle River and Paramus Roads south of Route 4.

Van Saun County Park

Paramus and River Edge

Children's zoo, children's railroad, walk-through aviary, recreated 1860s' farm scene. 12-court tennis center with fieldhouse and practice backstop, picnic tables and fireplaces, three picnic shelters, shaded garden around historic Washington Spring, pony rides, horseback riding lessons available, duck feeding, shuffleboard and horseshoe courts, children's play equipment, lake affording fishing and model-boat sailing, ice skating, sledding slopes, ballfields, open play area, comfort stations. New food-service building in zoo area.

Wallington County Park

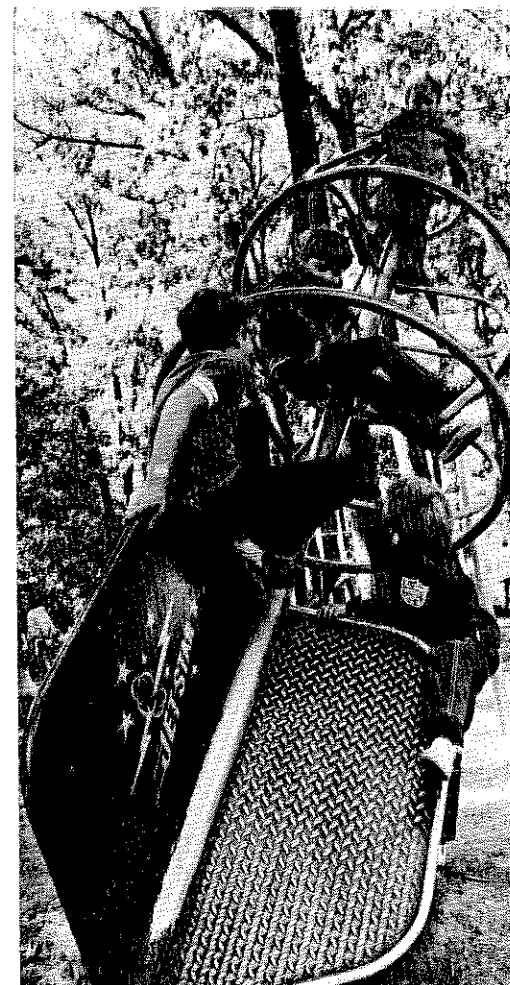
Wallington

Pond, ice skating, fishing, model-boat sailing, sledding slopes, baseball, football, picnic tables and fireplaces, children's playground, comfort station.

Wood Dale County Park

Woodcliff Lake, Hillsdale, Park Ridge

Lake, duck feeding, fishing, model-boat sailing, ice skating, picnic tables and fireplaces, picnic shelter, tennis courts, children's playground, comfort station.



**CONDENSED STATEMENT OF PROPERTIES
COMMITTED OR ACQUIRED FOR PARK PURPOSES
COMBINED BOND, BUDGET AND OTHER CAPITAL FUNDS**

Close of December 31st, 1969

AREA	SUB-TOTAL		TOTALS	
	Acreage	Cost	Acreage	Cost
OVERPECK CREEK				
Private properties purchased	105.22	\$ 456,374.00		
Municipal properties donated or committed	723.80			
State Tidal Lands purchased	—0—	400,000.00		
			829.02	\$ 856,374.00
PASSAIC RIVER				
Private properties purchased	49.86	\$ 121,320.00		
Private properties donated	0.07	1.00		
Municipal properties donated or committed	80.94	—0—		
			130.87	\$ 121,321.00
SADDLE RIVER				
Private properties purchased or committed	496.51	\$ 603,155.00		
Private properties donated	10.01	1.00		
Municipal properties donated or committed	66.70	3,000.00		
			573.22	\$ 606,156.00
SOUTHWEST BERGEN				
Private properties purchased	—0—	2,200.00		
Municipal properties donated	18.53	2.00		
			18.53	\$ 2,202.00
VAN SAUN				
Private properties purchased or committed	138.53	\$ 205,061.73		
Private properties donated	1.25	—0—		
			139.78	\$ 205,061.73
NORTHWEST BERGEN				
Private properties purchased or committed	1,600.31	\$2,579,731.71		
Municipal properties donated or committed	8.07	—0—		
			1,608.38	\$2,579,731.71
NORTHEAST BERGEN				
Private properties purchased	438.00	\$1,097,806.75		
Private properties donated	14.11	—0—		
Municipal properties donated	0.32	—0—		
			452.43	\$1,097,806.75
PASCACK BROOK				
Private properties purchased or committed	24.67	\$ 53,321.88		
Municipal properties donated or committed	115.46	—0—		
			140.13	\$ 53,321.88
PASCACK VALLEY				
Private properties purchased	109.98	\$ 232,869.00		
Private properties donated	0.88	—0—		
Municipal properties donated	6.69	—0—		
			117.55	\$ 232,869.00
HACKENSACK RIVER				
Private Properties purchased			0.08	\$ 10.00
Legals, Advertising, Engineering, etc.				\$ 43,035.29
			<u>4,009.99</u>	<u>\$5,797,889.36</u>



*THE MACAW capti-
vates young Van Saun
Park zoo visitors.*

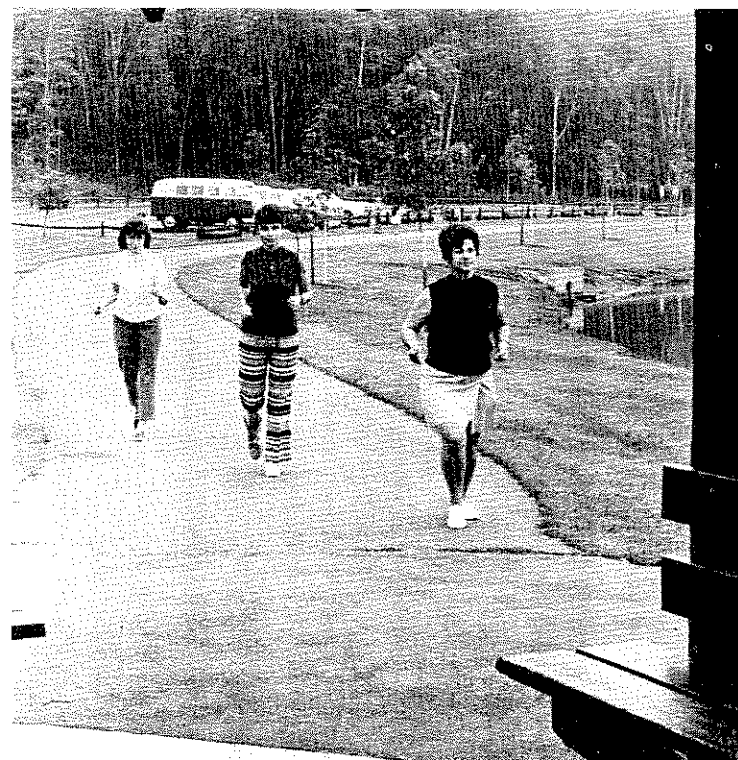
*DUCK FEEDING is a
popular pastime at
County park ponds.*





SWIMMERS enjoy a day at three-lake Darlington Park.

Pascack Valley Community Life Photo
JOGGING around park lakes keeps residents in trim.



BERGEN COUNTY PARK COMMISSION LAND ACQUISITION PROPERTIES COMMITTED, ACQUIRED OR DEDICATED BOND, BUDGET AND OTHER FUNDS

Close of December 31st, 1969

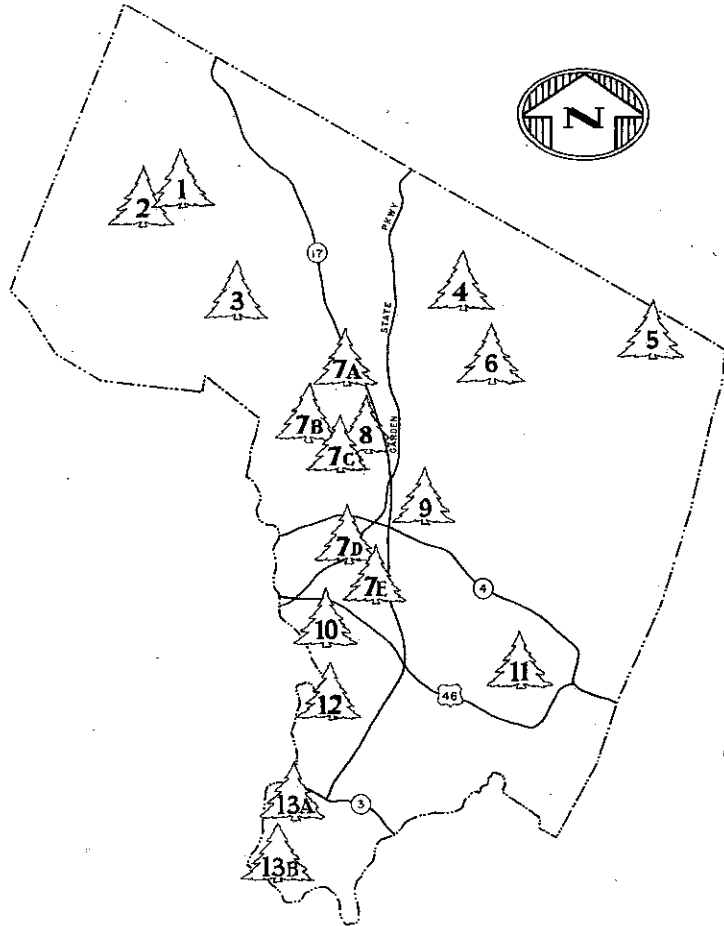
DESCRIPTION	SUB-TOTALS		TOTALS	
	Acreage	Principal	Acreage	Principal
<i>Private Properties Committed or Acquired</i>				
Reported close of December 31st, 1968	2,985.19	\$5,078,152.07		
Adjusted, Returned or Exchanged in 1969 (Minus)	— 0.09	— 0—		
			2,985.10	\$5,078,152.07
<i>Private Properties Committed or Acquired in Year 1969</i>				
Two parcels of land were acquired in two areas			4.38	\$ 273,700.00
<i>Municipal Properties Committed or Acquired</i>				
Reported close of December 31st, 1968	1,032.66	\$ 3,002.00		
Adjusted, Returned or Exchanged in 1969 (Minus)	— 12.15	— 0—		
			1,020.51	\$ 3,002.00
<i>Municipal Properties Committed or Acquired in Year 1969</i>				
No parcels of land were acquired in any area			— 0—	— 0—
<i>Tidal Lands Acquired from State of New Jersey</i>				
399.29 acres of tidal lands were acquired in 1966 in the Overpeck Area			— 0—	\$ 400,000.00
<i>Legals, Advertising, Engineering, Etc.</i>				\$ 43,035.29
Combined Bond & Budget Accounts				
			<u>4,009.99</u>	<u>\$5,797,889.36</u>

SUMMARY SOURCE OF APPROPRIATIONS AND EXPENDITURES

Close of December 31st, 1969

DESCRIPTION	Acreage	Expenditures	Receipts
<i>Receipts</i>			
Park Commission Bond Funds (As Adjusted)			\$3,989,312.50
Miscellaneous appropriation to Bond Account			
Re: Land Reclamation Corp. Prop. taxes			256.98
Park Commission Budget Funds			182,323.85
State of N. J. Green Acres Assistance Program (Joint Closing Account)			1,105,000.00
Capital Funds Surplus, Re: Green Acres			170,000.00
Capital Funds Surplus (Budget)			932.00
Capital Funds Surplus, Re: Federal Open Space Land Program			189,068.00
Trust Account, County Parks, Re: State of N. J. Route #95, Overpeck above 2.93 El.			199,985.00
Trust Account, County Parks, Re: Green Acres, Overpeck, Tidal Lands			200,000.00
<i>Disbursements</i>			
Private Properties Committed or Acquired	2,989.48	\$5,351,852.07	
Municipal Properties Committed or Acquired	1,020.51	3,002.00	
State of N. J. Navigation Bureau, Tidal Lands Acquired ..	— 0—	400,000.00	
Legals, Advertising, Engineering, Etc.	— 0—	43,035.29	
	4,009.99	\$5,797,889.36	\$6,036,878.33
Dec. 31, 1969 To Balance (Available Bond Funds on hand) ..		238,988.97	
	<u>4,009.99</u>	<u>\$6,036,878.33</u>	<u>\$6,036,878.33</u>

The County Park Network



1. Darlington County Park (Entrance fee Memorial Day week-end - Labor Day)
Park is on Darlington Avenue, Mahwah
2. Campgaw Mountain County Reservation
Entrance on Campgaw Road, Mahwah
3. Bergen County Wildlife Center
Entrance on Crescent Avenue, Wyckoff
4. Wood Dale County Park
Entrance on Prospect Avenue, Woodcliff Lake
5. Rockleigh Bergen County Golf Course
Entrance on Paris Avenue, Rockleigh
6. Pascack Brook County Park
Entrance on Emerson Road, Westwood
7. Saddle River County Park
 - A. Wild Duck Pond Area
East Ridgewood Avenue, Ridgewood
 - B. Glen Rock Area
Alan Avenue, just east of Prospect Street
 - C. Dunkerhook Area
Dunkerhook Road, Paramus
 - D. Saddle Brook Area
Saddle River Road, Saddle Brook
 - E. Rochelle Park Area
Howard Avenue, Rochelle Park
(Main entrance on Railroad Avenue by fall of 1970)
8. Orchard Hills Bergen County Golf Course
Entrance on Paramus Road, Paramus
9. Van Saun County Park
Entrances on Forest and Continental Avenues, Paramus, and Howland Avenue, River Edge
10. County parks in Garfield
Dahnert's Lake
Entrance on Midland Avenue
Belmont Hill
Entrance on Botany Street
11. Overpeck County Park
Overpeck Bergen County Golf Course
Entrance on Cedar Lane, Teaneck
Leonia play area — Fort Lee Road
12. Wallington County Park
Entrance on Maple Avenue, Wallington
13. Riverside County Park
 - A. North Area
Riverside Avenue, Lyndhurst
 - B. South Area
River Road, North Arlington

Directions to Darlington County Park:
Route 17 to Lake Street light. West into Lake Street and East Main Street, Ramsey. At Grand Union turn right into North Central Avenue. One block past the Municipal Building, turn left into Darlington Avenue. From Route 202, turn east onto Darlington Avenue in Mahwah.

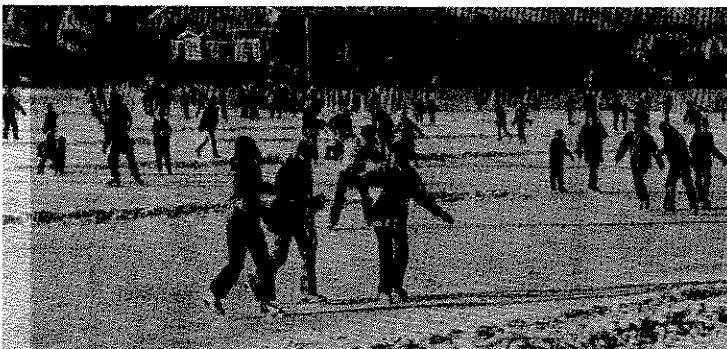
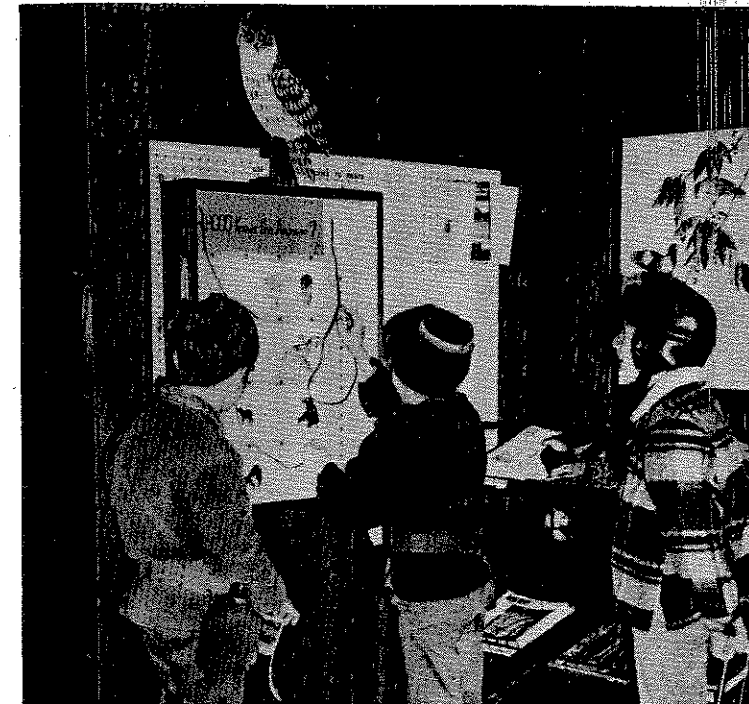
Directions to Campgaw Mountain Reservation:
From Route 208 go north onto Ewing Ave., then left onto Franklin Av., then right onto Pulis Av. (at the school) and left onto Campgaw Rd.

**THERE WERE some
30 skating days in
1969.**



**GOLFERS flock to
handy Overpeck County
Course.**

**OWL EYES light up
when the answer is
correct.**





Bergen County Park Commission Annual Report, 1969