

# Annual Report, 1968

## Bergen County Park Commission





THE RECORD PHOTO  
BENCH SWINGS are popular with visitors of all ages. The gaily painted swings may be found in most County parks.



## BERGEN COUNTY PARK COMMISSION, 1968 HACKENSACK, NEW JERSEY

Otto C. Pehle, President

Frederick E. Wendel, Vice President  
William Staubach, Secretary\*  
Frank P. Quintano, Assistant Secretary  
Bernard H. Johnson

Richard Norman  
Roy Woodward  
Gilbert E. Busch\*\*  
George Warchol

\* Deceased August 3, 1968

\*\* Resigned August 12, 1968

James A. McFaul,  
Executive Director

Walter M. D. Kern, Jr.,  
Assistant County Counsel

## BOARD OF CHOSEN FREEHOLDERS, 1968

William J. Dorgan, Director

Frank A. Buono, Jr.  
Eugene Francis  
Henry L. Hoebel  
Mrs. Doris Mahalick

William D. McDowell  
James F. McGuire  
Frank Perrotta, Jr.  
Benjamin Walenczyk, Chairman  
Park and Recreation Committee

Frank C. Osmers, Jr.,  
Executive Administrator

Frank J. Cuccio, County Counsel\*  
Pierre P. Garven \*\*

Richard L. Nelson, Assistant Executive Administrator

\* Resigned November 27, 1968

\*\* Appointed November 27, 1968

PEDAL BOATS return to the new boat dock at Darlington County Park. Eight new aluminum rowboats were added to the rental fleet.

COVER PICTURE: The contemporary redwood fieldhouse at Overpeck Bergen County Golf Course affords a good view of the action on the links. The course opened May 15.



# Making The Most of Our Parkland

Bergen County is developing a park system for all seasons and all moods.

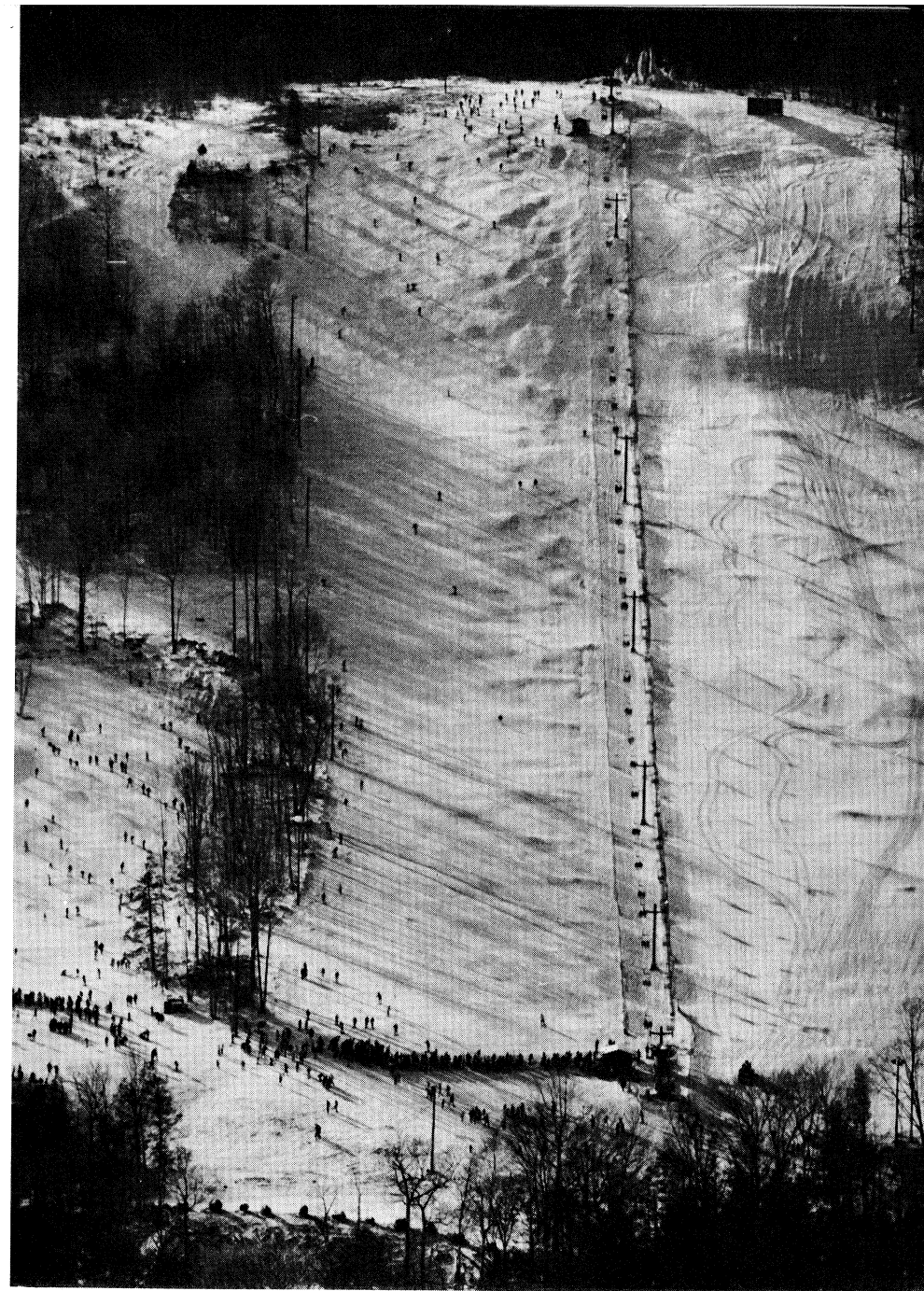
The Park Commission feels the County has an opportunity and an obligation to provide a rich variety of recreation facilities such as the golf courses, ski center, children's zoo, wildlife center, hiking trails, and campsites. In the offing are a walk-through aviary, garden center with conservatory, horseback riding center, ice arena, and scenic streamside drives as well as additional athletic fields, fishing ponds, tennis courts, playgrounds, and picnic groves.

With restoration, replicas, markers, and exhibits, the Park Commission is helping to preserve Bergen's heritage.

Our County parks cross town borders, improve waterways, and transform submarginal land. All of the newer parks are large — for a large and growing population.

We shall continue to seek all State and Federal grants available to us and to expand our County park facilities as rapidly as possible.

Otto C. Pehle  
President



THE RECORD PHOTO

*SKIERS waited eagerly for the opening of the new Campgaw Mountain Ski Center. As the year ended, slopes were acquiring a base coat of machine-made snow.*

# SPORTS FACILITIES ON THE UPGRADE

Bergen County park system sports facilities got a big boost in 1968. An 18-hole golf course opened in the spring; a ballfield equipped with lights for night games opened in the fall; and at the end of the year slopes of the new County ski center were acquiring a base coat of machine-made snow.

## A NEW GOLF COURSE

The new golf course is the first major project to be completed at Overpeck County Park. It has two ponds, two lagoons, and an 8-acre lake. Tees, greens, and fairways are served by an irrigation system. The two-level redwood fieldhouse is of contemporary design. Of the course's 150 acres, 140.55 are in Teaneck and 9.45 in Englewood.

Grading and drainage work got under way in 1968 for the second phase of Overpeck Park development. Landscaped picnic areas bordering the projected 200-acre lake, athletic fields, and a running track are planned for this section, which is in Palisades Park.

In addition to the batteries of

lights, features of the new baseball field at Riverside County Park North include a sodded infield with an irrigation system and portable bleachers seating 800 spectators. The outfield is used for football in the fall.

## SNOW FOR THE SLOPES

The Campgaw Mountain Ski Center has a 1,650-foot main slope with chair lift and a 600-foot school slope with T-bar lift. Snow is manufactured for both.

A contemporary visitors' center built in 1968 at Campgaw Mountain County Reservation will serve as a skiers' shelter in winter and will house a variety of exhibits and programs in other seasons. There is a circular raised fireplace in the center of the big lounge, which has windows on all four sides. A snack bar and comfort facilities are on the lower level. Provision is made for a Ski Patrol room and ski shop.

To insure a sufficient supply of water for snow-making, the Park Commission had a 4-acre pond ex-



*THE VISITORS' CENTER built in 1968 at Campgaw Mountain County Reservation will be utilized all year. It is at the base of the ski slopes.*

cavated, a dam built, and a pipeline laid to Darlington County Park's largest lake.

In the fall of 1968 the Commission began preparation of 9-hole Orchard Hills Bergen County Golf Course for temporary use on the site of Bergen Community College in Paramus. Work also got under way on a landscaped walk-through aviary scheduled to open in June 1969 at Van Saun County Park. Plans and specifications were drawn for a cafeteria in the Van Saun Park zoo area.

## LIVE ANIMALS DISPLAYED

Among 1968 additions in the County parks were: an octagonal shelter for live animals and birds at the Bergen County Wildlife Center in Wyckoff, a second train for improved service on the children's railroad in Van Saun Park, a new boat dock and new white sand beaches at Darlington Park, two picnic shelters at Riverside Park South and one at Dahnert's Lake County Park, and two new campsites — each accommodating some 20 campers and each with adiron-dack shelter and picnic table — at Campgaw Reservation.

## FOR BETTER FISHING

Fishing was improved at Wild Duck Pond with the addition of a sluice gate installed by the Park Commission and a dam built by the Wortendyke Field and Stream Club. The new complex assures a steady flow of fresh water except in winter when the flow is sealed off and the pond level dropped for safe skating.

A series of summer band concerts in the parks was financed jointly by the Park Commission and the musicians' union, and the Park Commission co-operated with the Peoples Trust Company in presentation of the West Point Band.

The Commission awarded ribbons and prizes for winning entries in the annual outdoor art show at Van Saun Park.

## NATURE PROGRAMS AT CENTER

Free activities sponsored by the Park Commission included: nature classes and programs and hikes at the Wildlife Center, tennis clinics conducted all summer at Van Saun Park for Bergen residents aged 8 to 18, and swimming lessons on



*THESE LIGHTS will shine on night games at Riverside Park North.*



weekday mornings for Darlington visitors.

The county placed 100 disadvantaged young people in a work-play-study program utilizing nine County parks.

Planning of the projected Bergen County Garden Center in Wyckoff reached the detail stage. A head start toward development was made in the fall with the planting of 12,000 daffodils.

The Park Commission's landscape crew in 1968 planted 23,000 flowering bulbs, 180,000 square feet of grass sod, 345 trees, and 300 flats of annuals.

#### NEW PLANTS FOR POND

Commission crews planted 120 autumn olive shrubs donated to the Wildlife Center by the Bergen County Federation of Garden Clubs and a variety of aquatic and bog plants donated by the Wyckoff Garden Club.

Among 1968 projects at the Wildlife Center were the addition of a floating island in the waterfowl pond, the planting of 25 crates of water lilies in the pond, addition of willow trees on the banks, and the planting of 3,000 English ivy plants as ground cover near the deer pen. The floating island is a plant-covered raft riding at anchor, with a ramp into the water. It proved as popular with sunbathing turtles as with waterfowl.

Revenue from fee facilities set new records in 1968. Overpeck Bergen County Golf Course, which opened May 15, grossed \$155,220.61 in its first season. Even with a second course to ease the pressure, Rockleigh Bergen County Course took in 9 per cent more than in 1967; \$300,996.78 was the 1968 total.

#### ATTENDANCE IS UP

Swimming season receipts totaling \$175,079.40 showed a 28 per cent increase over the 1967 total. The

tennis center in Van Saun Park had a 27 per cent increase taking in \$8,204.55 in 1968. The \$47,547.22 in ticket sales for the children's railroad in Van Saun Park represented an 18 per cent increase.

Permits for large-scale picnics and for overnight camping yielded \$5,223.50.

The Commission continued its extensive filling and grading operations in Rochelle Park, preparing a roadbed. The old Sprout Brook bed was filled, and fill from the Saddle River was stockpiled for road construction. A contract was awarded for construction of a vehicular and pedestrian span over Sprout Brook. In starting the Saddle River County Park linear drive at the south end, the Commission will extend access and open up the entire Rochelle Park area.

#### LARGE-SCALE OPERATION

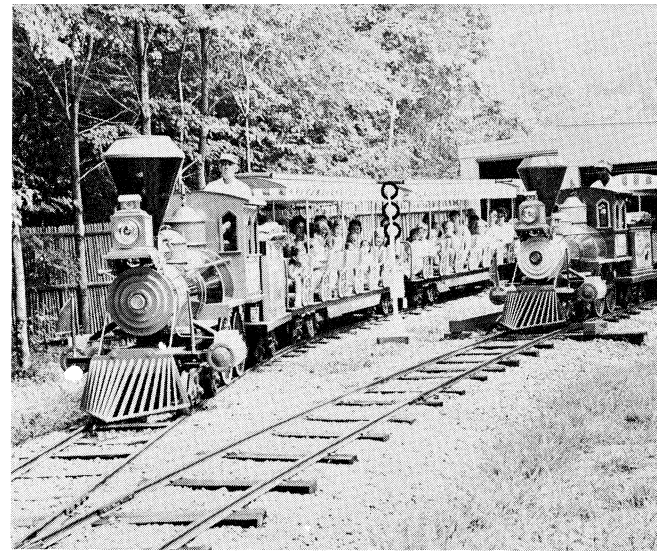
Storage buildings were added during the year at four park areas. Among 1968 construction totals were these: 9,200 linear feet of drive paved, paved parking space for 800 cars added, 40 acres of parkland graded, 1,800 linear feet of river bed dredged, and 23 acres planted with grass by contractors.

The Park Commission's 1968 purchases included 5,775 pounds of grass seed, 295 tons of fertilizer, a variety of trucks and tractors, and 25 powered mowers.

Park Commissioner carpenters and sign markers were kept busy meeting the needs of the various park areas.

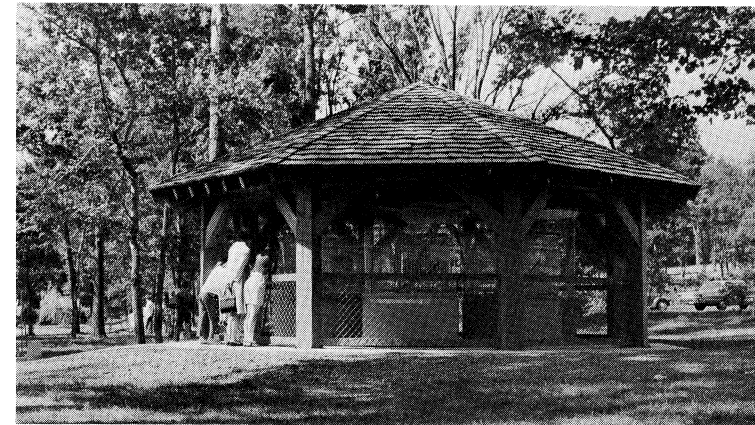
In 1968 the Commission acquired 45.63 acres in Mahwah and Ramsey, adjoining Darlington County Park, and .44 acre in Paramus, adjoining Van Saun Park.

Jogging came into fashion, and the Park Commission aided joggers by posting the length of a lap around the pond at each of seven lakeside paths in the County parks.

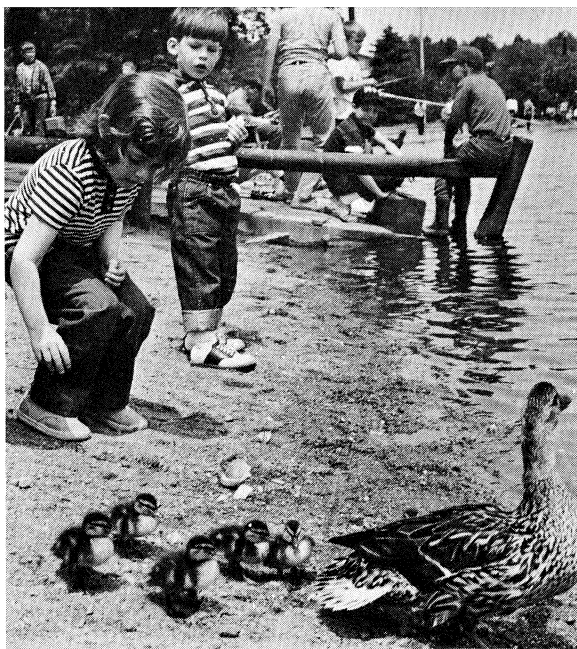


*A SECOND TRAIN was added to permit improved service on the children's railroad in Van Saun County Park.*

*LIVE ANIMALS and birds occupy the new octagonal shelter at the Bergen County Wildlife Center in Wyckoff.*



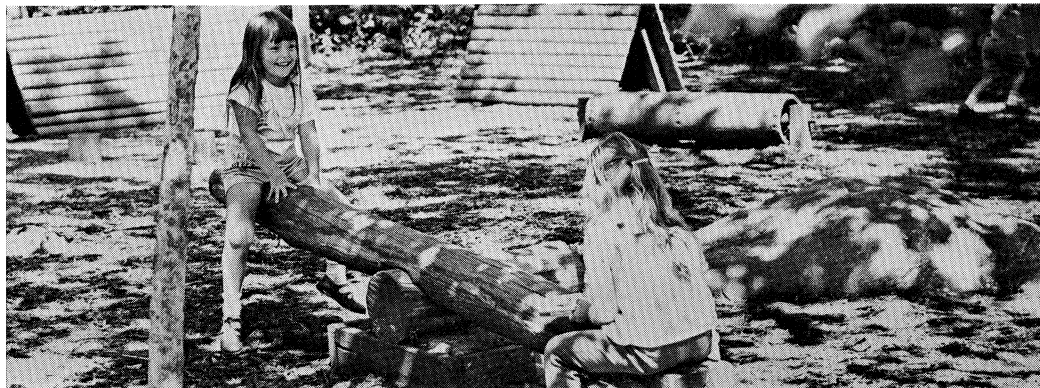
*THE SLUICE GATE installed at Wild Duck Pond and a dam built by volunteers improved fishing conditions.*



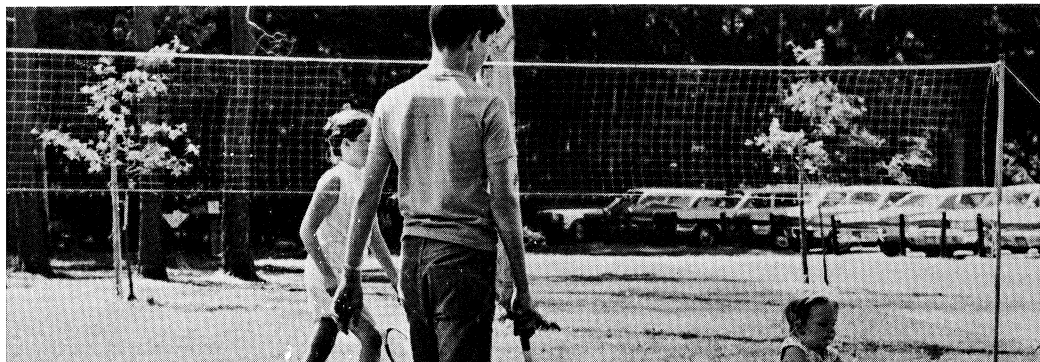
*A DUCK FAMILY captures the interest of two young visitors at Wild Duck Pond. Ducks are popular attractions at eight County park ponds.*



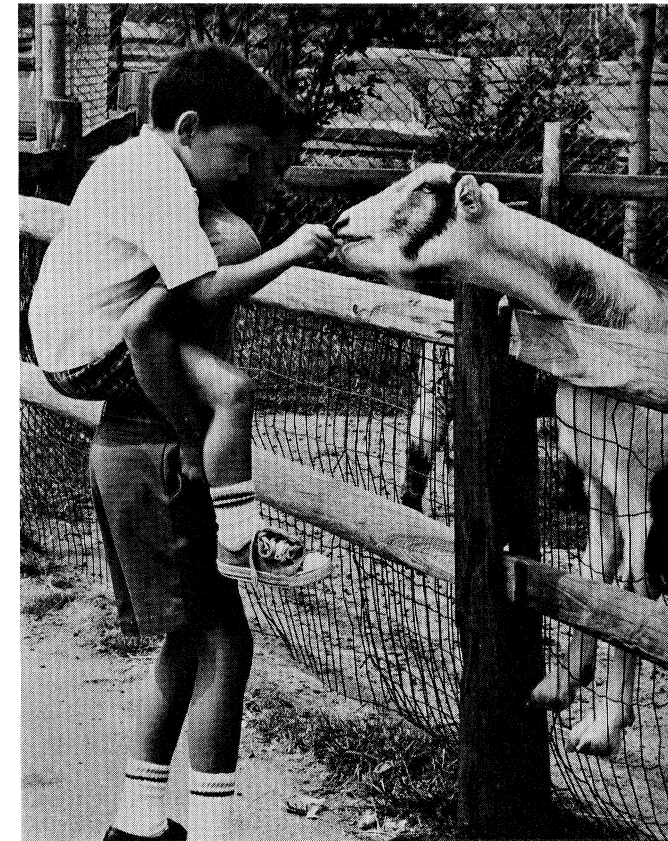
*LIVE SNAKES fascinate young viewers at the Bergen County Wildlife Center.*



*LOG PLAY equipment blends with Campgaw Reservation's woodsy landscape.*



*BADMINTON players pause to let a little traffic proceed under the net.*



*FEEDING A KID is a co-operative project at the zoo in Van Saun Park.*

*The  
Younger Set  
And  
Know How  
A Day*



# The Older Set To Enjoy At The Park



**GOLDEN AGE**  
groups schedule  
many outings at  
County parks.

**SHUFFLEBOARD**  
is especially popu-  
lar with senior  
citizens.



**HORSESHOE** courts are found at  
seven County park areas.



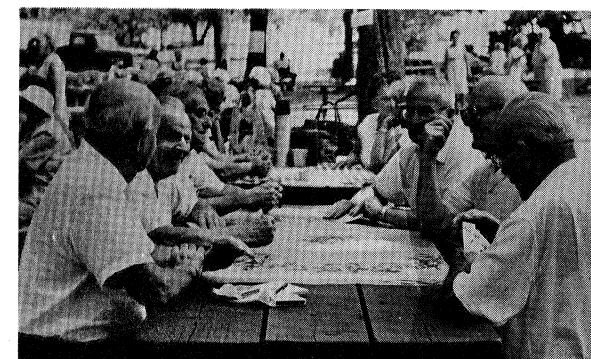
Children and golden agers enjoy and need parks more than people in the busy age groups between.

Often the juniors and seniors go together — grandparents and great grandparents supplying the little ones with pushes on the swings, bread crusts for duck feeding, milk from vacuum bottles, and guidance in fishing and toy-boat sailing. In most cases a day at the park costs nothing.

Senior golfers get a break on the County courses. Bergen residents over 65 may play on weekdays (except holidays) for half the regular greens fee. Starting in 1969, Bergen seniors will be able to swim at Darlington County Park at half price on weekdays.

There are special rates for children at fee facilities other than golf courses. The Park Commission waives the clean-up fee for large-scale picnics held by recognized youth agencies serving Bergen residents and also waives campsite fees for these organizations. There are special school rates for golf and tennis, and free tennis and nature classes for Bergen residents under 18.

**PICNIC TABLES** double as card tables when seniors gather at the park. Sixteen County park areas have picnic facilities.



# Bergen County Park System

## Belmont Hill County Park

Garfield

Rose garden, scenic lookout, children's play equipment, picnic tables.

## Bergen County Wildlife Center

Wyckoff

Waterfowl pond, nature walk, headquarters building overlooking pond. Exhibit hall, browsing library, meeting rooms in building. Naturalists in attendance. Live animal shelter. Center offers public programs and classes, also schedules special programs for groups.

## Campgaw Mountain County Reservation

Mahwah, Franklin Lakes, Oakland

Nature trails, picnic tables and fireplaces, picnic shelter, overnight camping sites (some with tent platforms and/or adirondack shelters), children's play equipment, 4½-mile bridle trail for permit holders, comfort station. Ranger service.

Ski center, 1,650-foot main slope, with chair lift, 600-foot school slope with T-bar lift, both with machine-made snow. Year-round visitors' center serves as ski shelter in winter. Horseback riding center to be constructed.

## Dahnert's Lake County Park

Garfield

Pond affording ice skating, duck feeding, fishing, model-boat sailing. Picnic tables and fireplaces, children's play equipment, comfort station.

## Darlington County Park

Mahwah and Ramsey

Three lakes, two for swimming and one for fishing and rental boating. Fieldhouse

with snack bar and open terraces. Locker rooms, pavilion, comfort station, children's playground, picnic tables. Facilities for tennis, handball, volleyball, softball, shuffleboard, basketball, horseshoe pitching.

Entrance fee during swimming season, Memorial Day weekend - Labor Day. Park open without charge rest of May and September and all of April, October, and November.

## Orchard Hills Bergen County Golf Course

Paramus

9 holes. To open in early summer, 1969.

## Overpeck County Park

Teaneck, Englewood, Leonia, Palisades Park, Ridgefield Park

Overpeck Bergen County Golf Course:

18 holes. Fieldhouse with lounge, snack bar, deck, pro shop.

Family Recreation Area:

Baseball, picnic tables and fireplaces, ice skating, basketball sets at rink. On Fort Lee Road, Leonia. Dredging under way for 200-acre lake included in master plan for a variety of recreation facilities on the 838-acre park site.

Site work for athletic fields under way in Palisades Park.

## Pascack Brook County Park

Westwood and River Vale

Baseball, softball, football. Major site work for streamside park under way.

## Riverside County Park

North Area, Lyndhurst:

Picnic tables and fireplaces, picnic shelter, baseball, softball, football, ice



*HAPPY MEMORIES linger on long after the picnic season is over.*

skating, basketball sets and portable volleyball net at rink, shuffleboard and horseshoe courts, tennis courts, children's playground, comfort station. Field with lights, bleachers for 1,600 spectators.

South Area, North Arlington and Lyndhurst:

Picnic tables and fireplaces, portable tennis nets, baseball, softball, football, children's playground horseshoe courts, small boat launching installation, model railroad tracks, comfort station, two shelters.

## Rockleigh Bergen County Golf Course

(Rockleigh, Northvale, Norwood)

27 holes. Fieldhouse with snack bar, pro shop, terrace.

## Saddle River County Park

Dunkerhook Area, Paramus:

Picnic tables and fireplaces, two picnic shelters, duck feeding, children's playground, horseshoe courts, comfort station.

Glen Rock Area:

Lake affording duck feeding, fishing, model-boat sailing. Picnic tables and fireplaces, two shelters, children's play equipment, ice skating, comfort station.

Rockelle Park Area:

Ice skating, basketball sets at rink, children's playground, picnic tables and fireplaces.

Saddle Brook Area:

Lake, duck feeding, fishing, model-boat sailing, baseball, football, children's playground, ice skating, picnic tables and fireplaces, shelter, bicycle and pedestrian path around lake, horseshoe courts, comfort station.

Wild Duck Pond Area, Ridgewood:

Pond, ice skating, duck feeding, model-

boat sailing, fishing, picnic tables and fireplaces, shelter, shuffleboard and horseshoe courts, children's playground, recreation room, comfort station.

Tower Restoration, Arcola, Paramus:

Tower and paddle wheel, focal point of famed Easton gardens, reconstructed above ruins of the original built circa 1900 near the site of the historic 1745 Red Mill. May be seen from Saddle River and Paramus Roads south of Route 4.

## Van Saun County Park

Paramus and River Edge

Children's zoo, children's railroad, recreated 1860s' farm scene, 12 tennis courts, picnic tables and fireplaces, three picnic shelters, shaded garden around historic Washington Spring, pony rides, horseback riding lessons available, duck feeding, shuffleboard and horseshoe courts, children's play equipment, lake affording fishing and model-boat sailing, ice skating, sledding slopes, ballfields, open play area, refreshment center, comfort stations.

Walk-through aviary scheduled to open in mid-June, 1969.

Cafeteria to be built in 1969.

## Wallington County Park

Wallington

Pond, ice skating, fishing, model-boat sailing, sledding slopes, baseball, football, picnic tables and fireplaces, children's playground, comfort station.

## Wood Dale County Park

Woodcliff Lake, Hillsdale, Park Ridge

Lake, duck feeding, fishing, model-boat sailing, ice skating, picnic tables and fireplaces, picnic shelter, tennis courts, children's playground, comfort station.



*HIKERS head for Hemlock Trail at Campgaw Mountain Reservation.*



**CONDENSED STATEMENT OF PROPERTIES  
COMMITTED OR ACQUIRED FOR PARK PURPOSES  
COMBINED BOND, BUDGET AND OTHER CAPITAL FUNDS**

Close of December 31st, 1968

| AREA  | SUB-TOTAL |               | TOTAL           |                       |
|---|-----------|---------------|-----------------|-----------------------|
|   | Acreage   | Cost          | Acreage         | Cost                  |
| <b>OVERPECK CREEK</b>                           |           |               |                 |                       |
| Private Properties purchased .....              | 100.07    | \$ 183,874.00 |                 |                       |
| Municipal properties donated .....              | 738.33    | —0—           |                 |                       |
| State Tidal Lands purchased .....               | —0—       | 400,000.00    |                 |                       |
|   |           |               | 838.40          | \$ 583,874.00         |
| <b>PASSAIC RIVER</b>                            |           |               |                 |                       |
| Private Properties purchased .....              | 49.86     | 121,320.00    |                 |                       |
| Private Properties donated .....                | 0.07      | 1.00          |                 |                       |
| Municipal properties donated or committed ..... | 80.94     | —0—           |                 |                       |
|   |           |               | 130.87          | 121,321.00            |
| <b>SADDLE RIVER</b>                             |           |               |                 |                       |
| Private Properties purchased .....              | 497.37    | 601,955.00    |                 |                       |
| Private Properties donated .....                | 10.01     | 1.00          |                 |                       |
| Municipal properties donated .....              | 64.32     | 3,090.00      |                 |                       |
|   |           |               | 571.70          | 604,956.00            |
| <b>SOUTHWEST BERGEN</b>                         |           |               |                 |                       |
| Private Properties purchased .....              | (Z) —0—   | 2,200.00      |                 |                       |
| Municipal properties donated .....              | 18.53     | 2.00          |                 |                       |
|   |           |               | 18.53           | 2,202.00              |
| <b>VAN SAUN</b>                                 |           |               |                 |                       |
| Private properties purchased or committed ..... | 138.53    | 205,061.73    |                 |                       |
| Private Properties donated .....                | 1.25      | —0—           |                 |                       |
|   |           |               | 139.78          | 205,061.73            |
| <b>NORTHWEST BERGEN</b>                         |           |               |                 |                       |
| Private Properties purchased or committed ..... | 1,600.31  | 2,579,731.71  |                 |                       |
| Municipal Properties donated or committed ..... | 8.07      | —0—           |                 |                       |
|   |           |               | 1,608.38        | 2,579,731.71          |
| <b>NORTHEAST BERGEN</b>                         |           |               |                 |                       |
| Private Properties purchased .....              | 438.00    | 1,097,806.75  |                 |                       |
| Private Properties donated .....                | 14.11     | —0—           |                 |                       |
| Municipal properties donated .....              | 0.32      | —0—           |                 |                       |
|   |           |               | 452.43          | 1,097,806.75          |
| <b>PASCACK BROOK</b>                            |           |               |                 |                       |
| Private Properties purchased or committed ..... | 24.67     | 53,321.88     |                 |                       |
| Municipal Properties donated or committed ..... | 115.46    | —0—           |                 |                       |
|   |           |               | 140.13          | 53,321.88             |
| <b>PASCACK VALLEY</b>                           |           |               |                 |                       |
| Private Properties purchased .....              | 109.98    | 232,869.00    |                 |                       |
| Private Properties donated .....                | 0.88      | —0—           |                 |                       |
| Municipal properties donated .....              | 6.69      | —0—           |                 |                       |
|   |           |               | 117.55          | 232,869.00            |
| <b>HACKENSACK RIVER</b>                         |           |               |                 |                       |
| Private Properties purchased .....              |           |               | 0.08            | 10.00                 |
|   |           |               | <u>4,017.85</u> | <u>\$5,481,154.07</u> |

(Z) The 0.12 acres originally purchased for \$2,200.00 was sold at Public Sale for \$3,100.00 and proceeds credited to Capital Funds Surplus.



*SLIDES are popular with Darlington County Park swimmers.*



*YOUNG FISHERMEN try their luck under a shade tree.*

**BERGEN COUNTY PARK COMMISSION  
LAND ACQUISITION  
PROPERTIES COMMITTED, ACQUIRED OR DEDICATED  
BOND AND BUDGET ACCOUNTS**

Close of December 31st, 1968

|  | <u>SUB-TOTALS</u> |                | <u>TOTALS</u>   |                       |
|--|-------------------|----------------|-----------------|-----------------------|
|  | Acreage           | Principal      | Acreage         | Principal             |
| <i>Private Properties Committed or Acquired</i>  |                   |                |                 |                       |
| Reported close of December 31st, 1967 .....  | 2,939.12          | \$4,889,652.07 |                 |                       |
| Adjusted, Returned or Exchanged in 1968 .....  | <u>—0—</u>        | <u>—0—</u>     |                 |                       |
|  |                   |                | 2,939.12        | \$4,889,652.07        |
| <i>Private Properties Committed or Acquired in Year 1968</i>   |                   |                |                 |                       |
| Two parcels of land were acquired in two areas .....   |                   |                | 46.07           | 188,500.00            |
| <i>Municipal Properties Committed or Acquired</i>  |                   |                |                 |                       |
| Reported close of December 31st, 1967 .....  | 1,031.48          | 3,002.00       |                 |                       |
| Adjusted, Returned or Exchanged in 1968 .....  | <u>—0—</u>        | <u>—0—</u>     |                 |                       |
|  |                   |                | 1,031.48        | 3,002.00              |
| <i>Municipal Properties Committed or Acquired in Year 1968</i>   |                   |                |                 |                       |
| One parcel of land was committed or<br>acquired in one area .....                                      |                   |                | 1.18            | —0—                   |
| <i>County of Bergen property dedicated</i>   |                   |                |                 |                       |
| Reported close of Dec. 31st, 1967 .....  | 320.64            | —0—            |                 |                       |
| Adjusted, Returned or Exchanged .....  | <u>— 320.64</u>   | <u>—0—</u>     |                 |                       |
|  |                   |                | —0—             | —0—                   |
| <i>Tidal lands acquired from State of New Jersey</i>   |                   |                |                 |                       |
| 399.29 acres of tidal lands were acquired from<br>the Navigation Bureau in 1966 in Overpeck Area ..... |                   |                | —0—             | 400,000.00            |
|  |                   |                | <u>4,017.85</u> | <u>\$5,481,154.07</u> |

**SUMMARY  
SOURCE OF APPROPRIATIONS AND EXPENDITURES 1968**

Close of December 31st, 1968

| Description  | Acreage         | Expenditures          | Receipts              |
|--|-----------------|-----------------------|-----------------------|
| <i>Receipts</i>  |                 |                       |                       |
| Park Commission Bond Funds (As Adjusted) .....   |                 |                       | \$3,440,034.98        |
| Miscellaneous appropriation to Bond Account  |                 |                       |                       |
| Re: Taxes 6/20 & 7/2/68 .....  |                 |                       | 256.98                |
| Park Commission Budget Funds .....   |                 |                       | 175,877.11            |
| State of N. J. Green Acres Assistance Program<br>(Joint Closing Account) .....               |                 |                       | 1,105,000.00          |
| Capital Funds Surplus, Re: Green Acres<br>Assistance Program .....                           |                 |                       | 170,000.00            |
| Capital Funds Surplus Budget Account .....   |                 |                       | 932.00                |
| Capital Funds Surplus Re: Federal Open Space<br>Land Program .....                           |                 |                       | 189,068.00            |
| Trust Account, County Parks Re: State of N. J.<br>Route #95, Overpeck above 2.93 EL. ....    |                 |                       | 199,985.00            |
| Trust Account, County Parks Re: Green Acres<br>Assistance Program Overpeck Tidal Lands ..... |                 |                       | 200,000.00            |
| <i>Disbursements</i>   |                 |                       |                       |
| Private Properties Committed or Acquired .....   | \$2,985.19      | \$5,078,152.07        |                       |
| Municipal Properties Committed or Acquired .....   | 1,032.66        | 3,002.00              |                       |
| State Bureau of Navigation Tidal Lands Acquired .....  | <u>—0—</u>      | <u>400,000.00</u>     |                       |
|  | <u>4,017.85</u> | <u>\$5,481,154.07</u> | <u>\$5,481,154.07</u> |



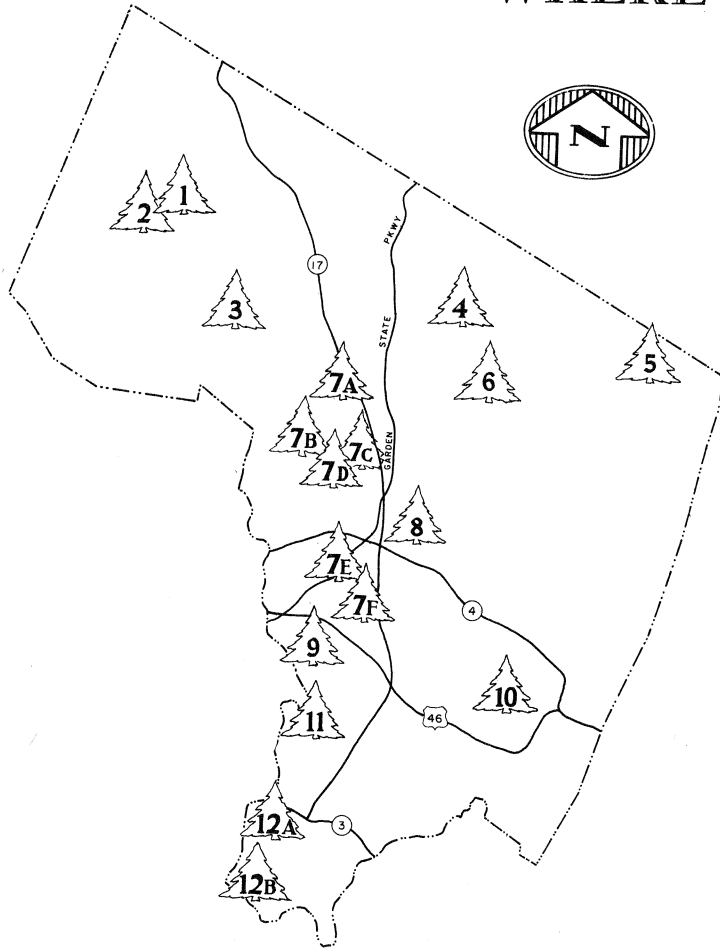
*TRANQUIL moments are treasured in bustling Bergen County.*



*CAMPGAW MOUNTAIN Reservation has wooded camping sites.*



# WHERE THE PARKS ARE



1. Darlington County Park (Entrance fee Memorial Day week-end-Labor Day)  
Park is on Darlington Avenue, Mahwah
2. Campgaw Mountain County Reservation.  
Ski center.  
Entrance on Campgaw Road, Mahwah
3. Bergen County Wildlife Center  
Entrance on Crescent Avenue, Wyckoff
4. Wood Dale County Park  
Entrance on Prospect Avenue, Woodcliff Lake
5. Rockleigh Bergen County Golf Course  
Entrance on Paris Avenue, Rockleigh
6. Pascack Brook County Park  
Entrance on Emerson Road, Westwood
7. Saddle River County Park
  - A. Wild Duck Pond Area  
East Ridgewood Avenue, Ridgewood
  - B. Glen Rock Area  
Alan Avenue, just east of Prospect Street
  - C. Orchard Hills Bergen County Golf Course.  
To open in early summer of 1969.  
9 holes.  
Paramus Road, Paramus
  - D. Dunkerhook Area  
Dunkerhook Road, Paramus
  - E. Saddle Brook Area  
Saddle River Road, Saddle Brook
  - F. Rochelle Park Area  
Howard Avenue, Rochelle Park
8. Van Saun County Park  
Entrances on Forest and Continental Avenues, Paramus, and Howland Avenue, River Edge
9. County Parks in Garfield  
Dahnert's Lake  
Entrance on Midland Avenue  
Belmont Hill  
Entrance on Botany Street
10. Overpeck County Park  
Overpeck Bergen County Golf Course  
Entrance on Cedar Lane, Teaneck.  
Leonia play area — Fort Lee Road
11. Wallington County Park  
Entrance on Maple Avenue, Wallington
12. Riverside County Park
  - A. North Area  
Riverside Avenue, Lyndhurst
  - B. South Area  
River Road, North Arlington

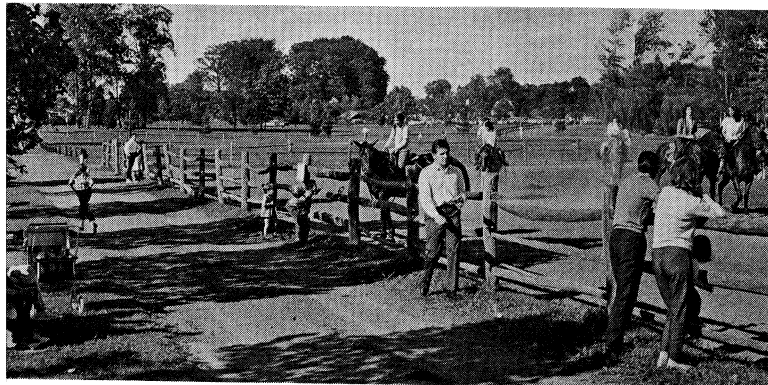


*THIS BAND concert is one of a series in the County parks.*



*OUTDOOR ART show entries hang on the tennis center fence.*

**HORSES** attract onlookers as well as riders to the paddock.





---

## Bergen County Park Commission Annual Report, 1968

---