

Bergen County Park Commission
Annual Report, 1967

BERGEN COUNTY PARK COMMISSION, 1967

HACKENSACK, NEW JERSEY

Peter J. Russo, President

Otto C. Pehle, Vice President
William Staubach, Secretary
Frederick E. Wendel, Assistant Secretary
Bernard H. Johnson
Dr. George L. Kingslow

Harold J. Hollenbeck *
George M. Gillette, Jr. *
Edward H. Ihnen ***
Richard Norman **
Frank P. Quintano **
Roy Woodward ****

* Term expired January 22, 1967
** Appointed January 22, 1967
*** Resigned December 12, 1967
**** Appointed December 20, 1967

James A. McFaul, Executive Director

Herbert H. Handelsmann, Staff Director

Donald R. Sorkow, Assistant County Counsel

BOARD OF CHOSEN FREEHOLDERS, 1967

James F. McGuire, Director

D. Bennett Mazur, Chairman
County Parks Committee
William J. Dorgan
Eugene Francis
Henry L. Hoebel

Mrs. Doris Mahalick
Harold Martin
Frank Perrotta, Jr.
Eugene E. Walsh

Ronald Zweig, Executive Administrator

Frank J. Cuccio, County Counsel

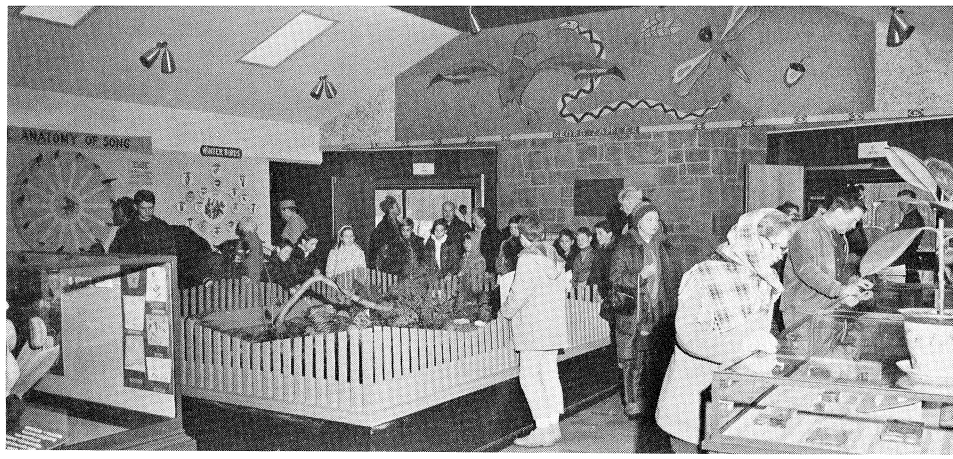
Richard L. Nelson, Assistant Executive Administrator

THE RECORD PHOTO

HOLIDAY TRAIN passengers are set for a trip around the children's railroad track at Van Saun County Park. The train comes out of winter storage for free rides to all comers during the December school vacation.

COVER PICTURE: Reconstructed over the ruins of an Arcola landmark, this tower and paddle wheel will preserve a bit of the flavor of yesteryear. The original tower and wheel complex, focal point of the elaborate Easton gardens, was built circa 1900 near the historic 1745 Red Mill site and restored in 1967 by the Bergen County Park Commission.

NATURE EXHIBITS
at the Bergen County
Wildlife Center are
well supplied with
viewers. The Center
opened in the spring.



A Look Ahead

In 1967 the Bergen County Park Commission added a variety of facilities to today's park system and laid the groundwork for major park projects in the County's future.

While an 18-hole golf course neared completion at the north end of the 838-acre Overpeck County Park site, a dredge was scooping out a 200-acre lake for a projected family recreation center near the south end of the site.

Land clearing got under way for the skiing facility and year-round visitors' center to be constructed at Campgaw Mountain County Reservation, and also for the park which will border a section of Pascack Brook between Westwood and River Vale.

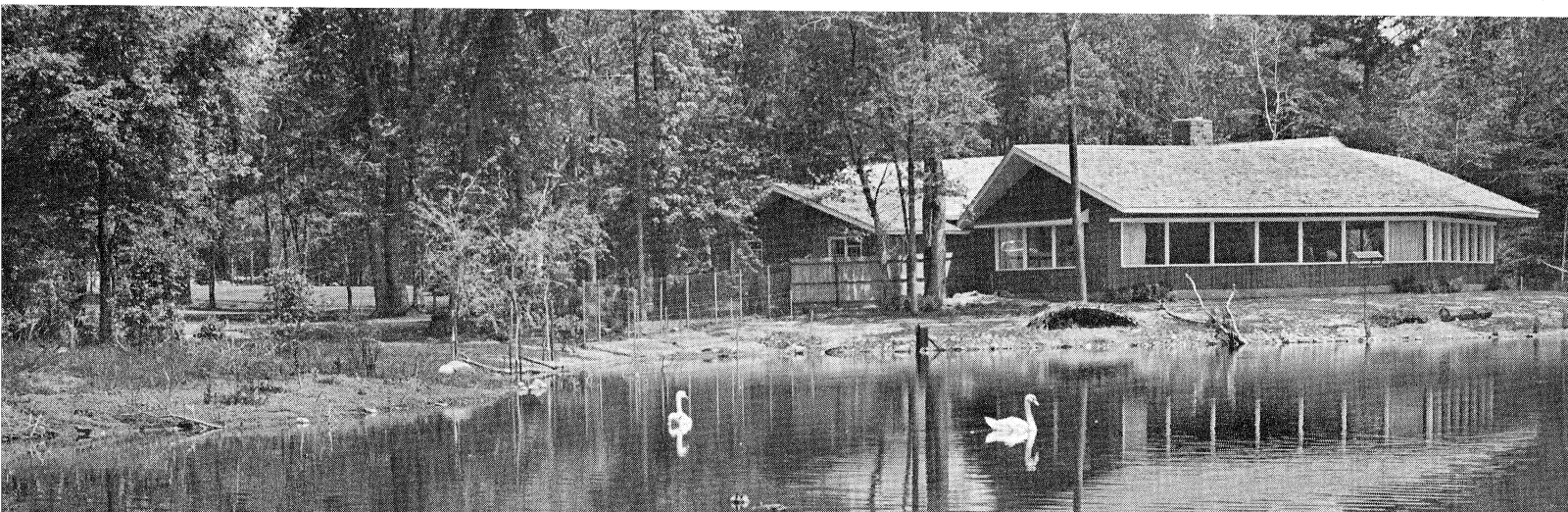
The Commission made studies preparatory to design of the projected Bergen County Garden Center in Wyckoff. Preliminary plans call for a conservatory and model gardens.

Work was started on the design for a large aviary at Van Saun County Park, and plans were drawn for a lighted ballfield at Riverside County Park's North Area in Lyndhurst.

The April 17 dedication of 321 acres in Lyndhurst as County parkland brought the welcome prospect of a large recreation facility in populous South Bergen some 6 years hence, after land fill reclamation.

Peter J. Russo
President

A DUCK'S EYE VIEW of the Wildlife Center building shows the window wall overlooking the waterfowl pond.



New Features Serve A Variety of Interests

A wildlife center in Wyckoff and a restored tower landmark in Arcola were added to the Bergen County park system in 1967, and the new Overpeck Bergen County Golf Course was nearly completed.

The wildlife center opened in the spring and later developed an educational program and added many exhibits. Features of the project include a waterfowl pond, an exhibit building looking out on the pond, and a winding wooded nature walk. A browsing library contains books on nature subjects.

LANDMARK RESTORED

The Arcola tower and paddle wheel restored by the Park Commission had been the focal point of Edward Easton's famous gardens. The new structure rose from the ruins of the original built circa 1900 near the site of the historic 1745 Red Mill.

President McKinley was among visitors at the Easton gardens. The estate served as a setting in many early movies produced by Fort Lee film companies. Water was pumped from the Saddle River by the paddle wheel for fountains and plantings of the gardens, and a dam recreated the old mill pond. (The Saddle River has been relocated and no longer flows near the structure.)

Motorists can see the restoration from Saddle River and Paramus Roads just south of Route 4.

GOLF COURSE IS MAJOR PROJECT

Work at the Overpeck County Golf Course site in 1967 included construction of buildings and bridges, all paving, and finishing touches on the 18-hole course itself. Opening is scheduled for May 15, 1968.

Money for the contemporary red-

wood fieldhouse came from bond funds approved by voters in 1966.

Commission President Russo's message on Page 1 of this report contains a summary of 1967 groundwork for major park facilities in the County's future.

BRIDLE AND BIKE PATHS

Horse and bicycle owners gained new riding places in 1967. A 4½-mile bridle trail was established at Campgaw Mountain County Reservation and a mile-long paved path for cyclists and pedestrians was installed around the lake in the Saddle Brook Area of Saddle River County Park.

Paved footpaths were completed around lakes in Van Saun and Dahnert's Lake County Parks and the Glen Rock Area of Saddle River County Park.

During 1967 the Park Commission sponsored free tennis lessons for Bergen residents under 18, an outdoor art show, an art contest, and a tennis tournament and cosponsored free band concerts in the parks and the Saddle Brook Area fishing demonstration and contest.

NATURE CLASSES POPULAR

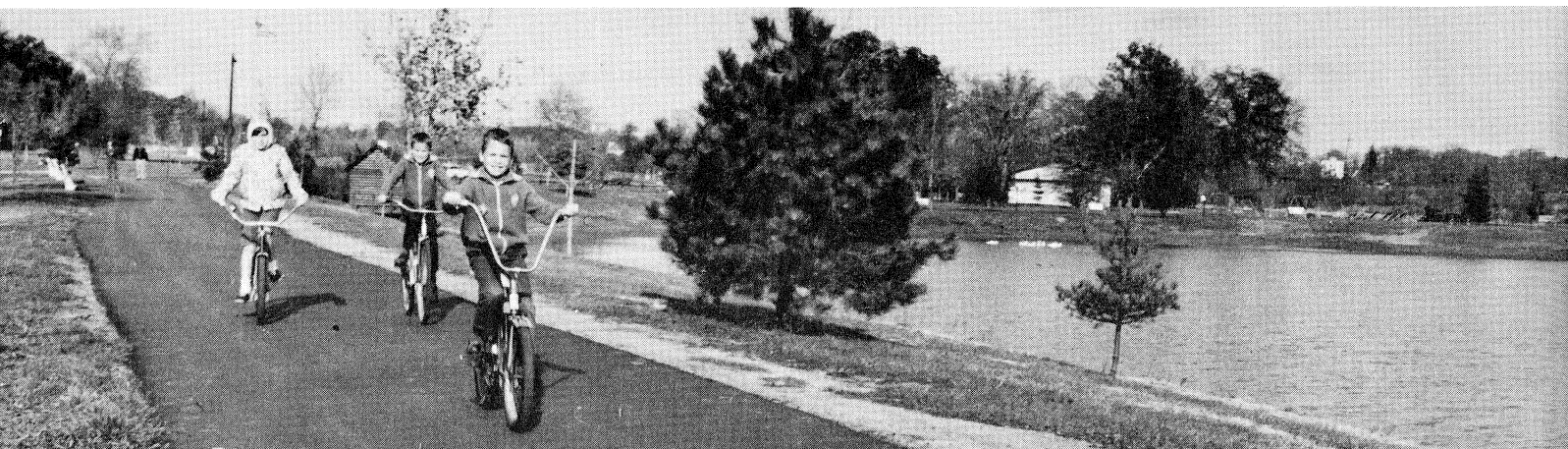
Crowds showed up at the Bergen County Wildlife Center for children's free nature classes in summer, and the center's naturalists were hard put to keep up with fall bookings for a program on the woodland community. In October and November alone, 144 organizations and school classes scheduled the program, which included a guided tour of the nature walk when weather permitted.

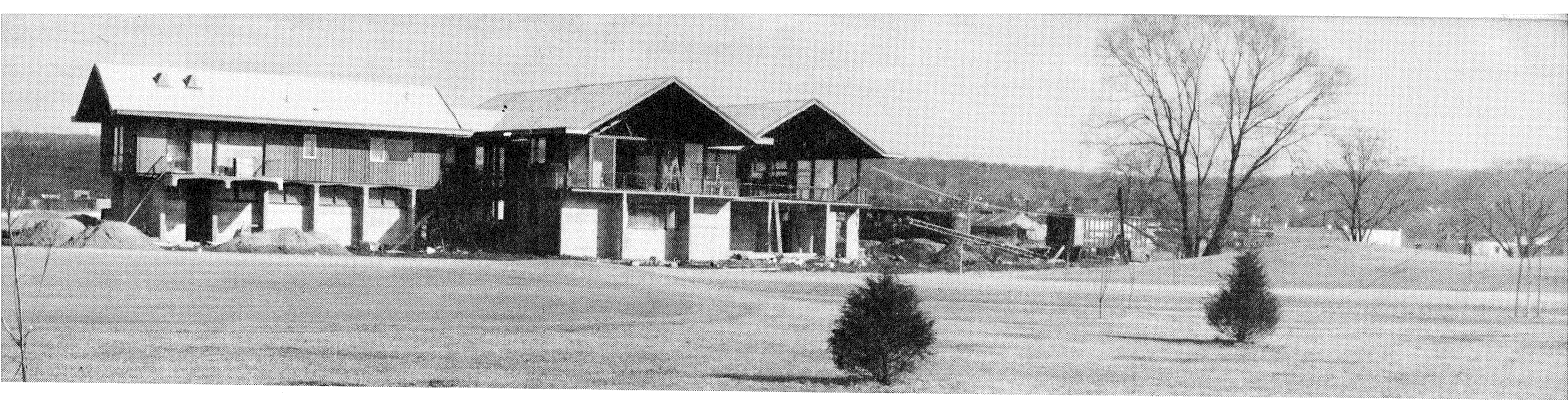
During the year the Park Commission issued 2,928 park-use permits to organizations and schools, chiefly for picnics.

A PLACE TO RIDE *was what horse owners requested. The Park Commission's answer is a new 4½-mile bridle trail at Campgaw Mountain County Reservation.*

THE PEDALING IS EASY *on the new mile-long bicycle and pedestrian path around the lake at Saddle River County Park's Saddle Brook Area.*

THE RECORD PHOTO





REDWOOD SHEATHS the fieldhouse at Overpeck County Golf Course scheduled to open May 15, 1968.

A 59-acre addition to Campgaw Mountain County Reservation was the largest land purchase of the year. As President Russo noted, dedication of 321 acres in Lyndhurst as County parkland gives promise of a new park after land fill reclamation.

IMPROVEMENTS IN PARKS

Improvements in existing park areas included new play equipment costing \$4,291, three new comfort stations, a new picnic shelter, 38,000 square yards of new asphalt surface, 23,500 square feet of newly laid sod, and 569 new trees. Comfort stations were added at Van Saun and Wallington County Parks and Saddle River County Park's Glen Rock Area. The new picnic shelter is at Campgaw Reservation.

The paving total included 15,200 square yards of drive and parking surface and paths at the Overpeck Golf Course and 19,130 square yards of path surface in other County park areas.

Pond-improvement work begun in 1967 at Wallington County Park will provide reinforced concrete curb at the edge of the pond to prevent soil erosion and enhance the pond's appearance.

10 BRIDGES BUILT

One of 10 new bridges added to the parks in 1967 gave Ridgewood children access to the Glen Rock Area, which they had been eyeing wistfully from across Ho-Ho-Kus Brook. A new footbridge in Van Saun Park's paddock area provides access to recreation facilities when the area is opened for parking on busy days.

All the other new bridges are at golf courses, three at Overpeck and five at the Rockleigh Bergen County Course. They were built for golf cars

as well as for golfers on foot, and one of the Overpeck bridges will also accommodate Park Commission service vehicles.

Maintenance buildings were constructed at Van Saun Park and Saddle River Park's Dunkerhook Area. The Commission replaced outmoded lights at County park ice skating areas.

CREWS ARE KEPT BUSY

Among tasks performed by Park Commission crews were landscaping, land-clearing, filling and grading, drainage work, maintenance and repair of equipment and installations, demolition of unwanted structures, and utility installations which included electric and telephone cables, water lines, a gas main, lighting systems, and heating units.

The crews installed catch basins, drinking fountains, and concrete walks, footings, and platforms.

At the request of the Park Commission, the Bergen County Mosquito Commission rerouted 1,000 feet of Sprout Brook in Rochelle Park, and Park Commission crews bulldozed roads — utilizing fill from the Saddle River.

Many of the exhibit facilities at the Wildlife Center were built by Park Commission crews. The workshop turned out 379 signs for the parks.

A CRANE FOR THE PARKS

A crane priced at \$37,522 was purchased for use in all park areas. Tractors, a half-ton truck, and large mowers were other major items in the \$73,255 field-equipment budget.

Landscaping supplies included 295 tons of fertilizer, 230 tons of top dressing, 5,650 pounds of grass seed, 11,650 flowering bulbs, 75 flowering shrubs, and 300 flats of annuals.

The Park Commission turned over to the Bergen County Board of Freeholders \$464,660.91 in gross receipts from fee facilities during the first 11 months of the year. Totals included \$275,393.71 from the Rockleigh County Golf Course, \$136,344.44 from Darlington County Park (during the swimming season), \$40,329.11 from the children's railroad at Van Saun Park, \$6,476.65 from the tennis center at Van Saun Park, \$5,942 from campsite and group picnic permits, and \$175 from the boat-launching installation in North Arlington.



SCHOOL CLASSES are scheduling field trips to the Wildlife Center, where naturalists conduct a program for the pupils.



PICNICKING is fun for all. Sixteen County park areas have tables.

GOLFERS FLOCK to the 27-hole Rockleigh Bergen County Course.

SUN BATHERS watch the lake bathers at Darlington County Park.



Enjoying The Great

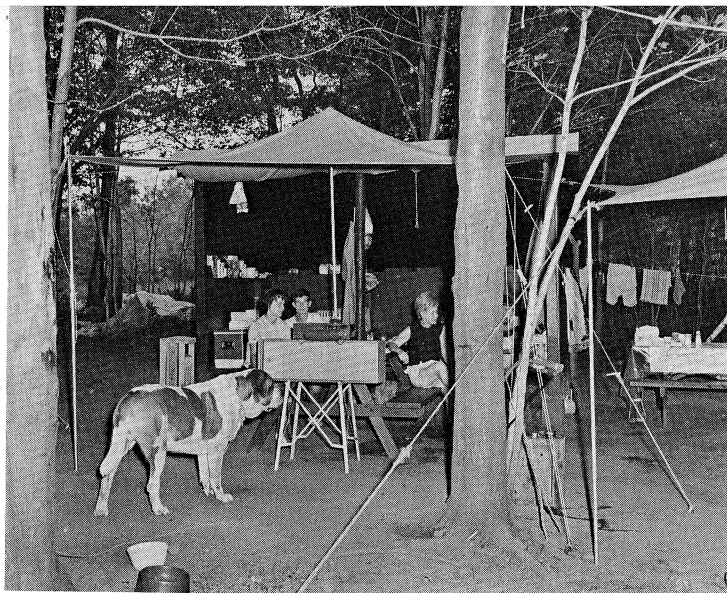
Until the 1940's Bergen County had more than its fair share of open space. Then the developers moved in and snapped up our fields and groves, our farms and vacant lots. It became apparent that parks were needed to preserve some green acres for the people to enjoy.

Our parks give us a chance to get out in the open — a chance to picnic and play, to sit near the water and go forth restored and refreshed.

BASEBALL fields at nine County park areas are in great demand.

YOUNG ANGLERS receive pointers on how to hook a whopper.





CAMPERS enjoy the rugged life at Campgaw Reservation.



THE RECORD PHOTO
DOWNHILL is easy. Sledding slopes are at Van Saun and Wallington County Parks.

Outdoors

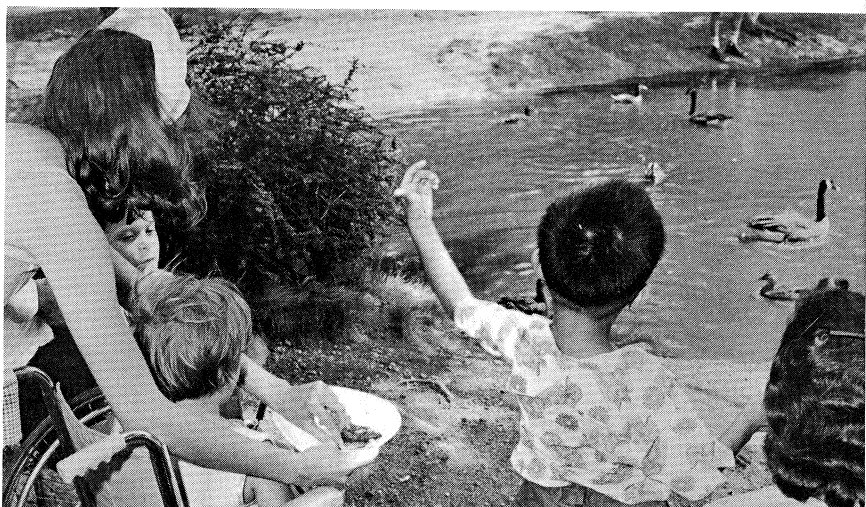
HIKERS at Campgaw Reservation have a choice of trails.



PLAY EQUIPMENT keeps children happy at 14 County park areas.

DUCK FEEDING brightens the day for handicapped youngsters.

RIDGEWOOD NEWS PHOTO



BERGEN COUNTY PARK SYSTEM

Belmont Hill County Park

Garfield

Rose garden, scenic lookout, children's play equipment, picnic tables.

Bergen County Wildlife Center

Wyckoff

Waterfowl pond, nature walk, headquarters building overlooking pond. Exhibit hall, browsing library, meeting rooms in building. Naturalists in attendance. Center offers public programs and classes, also schedules special programs for groups.

Campgaw Mt. County Reservation

Mahwah, Franklin Lakes, Oakland

Nature trails, picnic tables and fireplaces, picnic shelter, overnight camping sites (some with tent platforms and/or adirondack shelters), children's play equipment, 4½-mile bridge trail for permit holders, comfort station. Ranger service.

Six-trail skiing facility and year-round visitors' center under construction.

Dahnert's Lake County Park

Garfield

Pond affording ice skating, duck feeding, fishing, model-boat sailing. Picnic tables and fireplaces, children's play equipment, comfort station.

Darlington County Park

Mahwah and Ramsey

Three lakes, two for swimming and one for fishing and rental boating. Fieldhouse with snack bar and open terraces. Locker rooms, pavilion, comfort stations, children's playground, picnic tables. Facilities for tennis, handball, volleyball, softball, shuffleboard, basketball, horseshoe pitching.

Entrance fee during swimming season, Memorial Day-Labor Day. Park open without charge rest of May and September and all of April, October, and November.

Overpeck County Park

Teaneck, Englewood, Leonia, Palisades Park, Ridgely Park

Overpeck Bergen County Golf Course:

18 holes. Fieldhouse with lounge, snack bar, deck, pro shop. Scheduled to open May 15, 1968.

Baseball, picnic tables and fireplaces, ice skating, basketball sets at rink.

Dredging under way for 200-acre lake included in master plan for a variety of recreation facilities on the 838-acre park site.

Pascack Brook County Park

Westwood and River Vale

Baseball, softball, football.

Initial major site work for streamside park under way.

Riverside County Park

North Area, Lyndhurst:

Picnic tables and fireplaces, picnic shelter, baseball, softball, football, ice skating, basketball sets and portable volleyball net at rink, shuffleboard and horseshoe courts, tennis courts, children's playground, comfort station. Ballfield with lights to be constructed in 1968.

South Area, North Arlington and Lyndhurst:

Picnic tables and fireplaces, portable tennis nets, baseball, softball, football, children's playground, horseshoe courts, small-boat launching installation, model railroad tracks, comfort station.

Rockleigh Bergen County

Golf Course

(Rockleigh, Northvale, Norwood)

27 holes. Fieldhouse with snack bar, pro shop, terrace.

Saddle River County Park

Dunkerhook Area, Paramus:

Picnic tables and fireplaces, two picnic shelters, duck feeding, children's playground, horseshoe courts, comfort station.

Glen Rock Area:

Lake affording duck feeding, fishing, model-boat sailing. Picnic tables and fireplaces, two shelters, children's play equipment, ice skating, comfort station.

Rockelle Park Area:

Ice skating, basketball sets at rink, children's playground, picnic tables and fireplaces.

Saddle Brook Area:

Lake, duck feeding, fishing, model-boat sailing, baseball, football, children's playground, ice skating, picnic tables and fireplaces, shelter, bicycle and pedestrian path around lake, horseshoe courts, comfort station.

Wild Duck Pond Area, Ridgewood:

Pond, ice skating, duck feeding, model-boat sailing, fishing, picnic tables and fireplaces, shelter, shuffleboard and horseshoe courts, children's playground, recreation room, comfort station.

Tower Restoration, Arcola, Paramus:

Tower and paddle wheel, focal point of famed Easton gardens, reconstructed



THE OUTDOOR ART SHOW
at Van Saun Park is an annual event.

above ruins of the original built circa 1900 near the site of the historic 1745 Red Mill. May be seen from Saddle River and Paramus Roads south of Route 4.

Van Saun County Park

Paramus and River Edge

Children's zoo, children's railroad, recreated 1860s farm scene, 12 tennis courts, picnic tables and fireplaces, three picnic shelters, shaded garden around historic Washington Spring, pony rides, horseback riding lessons available, duck feeding, shuffleboard and horseshoe courts, children's play equipment, lake affording fishing and model-boat sailing, ice skating, sledding slopes, ballfields, open play area, refreshment center, comfort stations.

Large aviary to be constructed in 1968.

Wallington County Park

Wallington

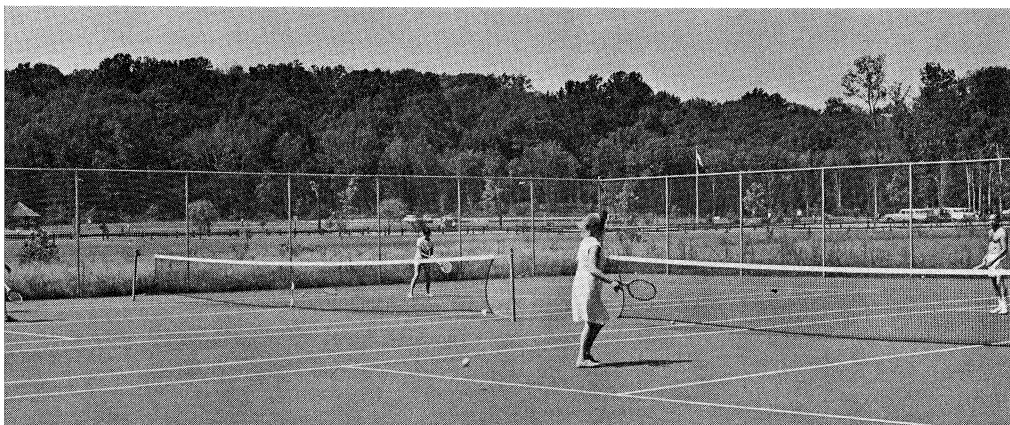
Pond, ice skating, fishing, model-boat sailing, sledding slopes, baseball, football, picnic tables and fireplaces, children's playground, comfort station.

Wood Dale County Park

Woodcliff Lake, Hillsdale, Park Ridge

Lake, duck feeding, fishing, model-boat sailing, ice skating, picnic tables and fireplaces, picnic shelter, tennis courts, children's playground, comfort station.

TENNIS courts at five County park areas are given a good workout.



**BERGEN COUNTY PARK COMMISSION
LAND ACQUISITION PROPERTIES COMMITTED, ACQUIRED OR DEDICATED
BOND AND BUDGET ACCOUNTS**

Close of December 31, 1967

Description	SUB-TOTALS		TOTALS	
	Acreage	Cost	Acreage	Cost
<i>Private Properties Committed or Acquired</i>				
Reported close of December 31, 1966	2,845.03	\$4,673,234.07		
Adjusted, Returned or Exchanged	—0—	—0—		
			2,845.03	\$4,673,234.07
<i>Private Properties Committed or Acquired in Year 1967</i>				
Two Parcels of land were acquired in one area			94.09	216,418.00
<i>Municipal Properties Committed or Acquired</i>				
Reported close of December 31, 1966	1,026.75	3,002.00		
Adjusted, Returned or Exchanged	—0.12	—0—		
			1,026.63	3,002.00
<i>Municipal Properties Committed or Acquired in Year 1967</i>				
Two parcels of land were committed or acquired in two areas			4.85	—0—
<i>County of Bergen Properties Dedicated In Year 1967</i>				
County owned meadow lands in North Arlington and Lyndhurst dedicated for a County Park in one area			320.64	—0—
<i>Tidal lands Acquired from State of New Jersey</i>				
399.29 acres of Tidal Lands were acquired from the Navigation Bureau in 1966 in Overpeck Area	—0—	—0—	—0—	400,000.00
			<u>4,291.24</u>	<u>\$5,292,654.07</u>

**SUMMARY
SOURCE OF APPROPRIATIONS AND EXPENDITURES 1967**

Close of December 31, 1967

Description	Acreage	Expenditures	Receipts
<i>Receipts</i>			
Park Commission Bond Funds (As Adjusted)			\$3,262,291.96
Park Commission Budget Funds			165,377.11
State of New Jersey Green Acres Assistance Program (Joint Account)			1,105,000.00
Capital Funds Surplus re: Green Acres Assistance Program			170,932.00
Capital Funds Surplus re: Federal Open Space Land Program			189,068.00
Trust Account, County Parks, re: State of New Jersey, Rt. #95, Overpeck, Above 2.93 El.			199,985.00
Trust Account, County Parks, re: Green Acres Assistance Program, Overpeck Tidal Lands			200,000.00
<i>Disbursements</i>			
Private Properties committed or acquired	2,939.12	\$4,889,652.07	
Municipal Properties committed or acquired	1,031.48	3,002.00	
County of Bergen properties dedicated	320.64	—0—	
Bureau of Navigation Tidal Lands acquired	—0—	400,000.00	
	<u>4,291.24</u>	<u>\$5,292,654.07</u>	<u>\$5,292,654.07</u>

**CONDENSED STATEMENT OF PROPERTIES
COMMITTED OR ACQUIRED FOR PARK PURPOSES
COMBINED BOND, BUDGET AND OTHER CAPITAL FUNDS**

Close of December 31, 1967

AREAS	SUB-TOTALS		TOTALS	
	Acreage	Cost	Acreage	Cost
OVERPECK CREEK				
Private Properties Purchased	98.35	\$ 183,874.00		
Municipal Properties Donated	740.05	—0—		
State Tidal Lands Purchased	—0—	400,000.00		
			838.40	\$ 583,874.00
PASSAIC RIVER				
Private Properties Purchased	49.86	121,320.00		
Private Properties Donated	0.07	1.00		
Municipal Properties Donated	78.59	—0—		
Municipal Properties Committed	2.35	—0—		
			130.87	121,321.00

SADDLE RIVER							
Private Properties Purchased	497.37	599,955.00					
Private Properties Water Rights	—0—	2,000.00					
Private Properties Donated	10.01	1.00					
Municipal Properties Donated	64.32	3,000.00					
					571.70	604,956.00	
SOUTHWEST BERGEN							
Private Properties Purchased	(Z) —0—	2,200.00					
Municipal Properties Donated	18.53	2.00					
					18.53	2,202.00	
VAN SAUN							
Private Properties Purchased or Committed	138.09	194,561.73					
Private Properties Donated	1.25	—0—					
					139.34	194,561.73	
NORTHWEST BERGEN							
Private Properties Purchased or Committed	1,554.68	2,401,731.71					
Municipal Properties Donated or Committed	8.07	—0—					
					1,562.75	2,401,731.71	
NORTHEAST BERGEN							
Private Properties Purchased	438.00	1,097,806.75					
Private Properties Donated	14.11	—0—					
Municipal Properties Donated	0.32	—0—					
					452.43	1,097,806.75	
PASCACK BROOK							
Private Properties Purchased	24.67	53,321.88					
Municipal Properties Donated or Committed	114.28	—0—					
					138.95	53,321.88	
PASCACK VALLEY							
Private Properties Purchased	109.98	232,869.00					
Private Properties Donated	0.88	—0—					
Municipal Properties Donated	6.69	—0—					
					117.55	232,869.00	
HACKENSACK RIVER (South)							
County Property Dedicated					320.64	—0—	
HACKENSACK RIVER							
Private Properties Purchased					0.08	10.00	
					<u>4,291.24</u>	<u>\$5,292,654.07</u>	

(Z) The 0.12 acres originally purchased for \$2,200.00 was sold at Public Sale for \$3,100.00 and proceeds credited to Capital Funds Surplus Account.

**BERGEN COUNTY PARK COMMISSION
REPORT OF GREEN ACRES ASSISTANCE PROGRAM
PARTICIPATING FUNDS OF 50% OF COSTS RECEIVED TO DATE**

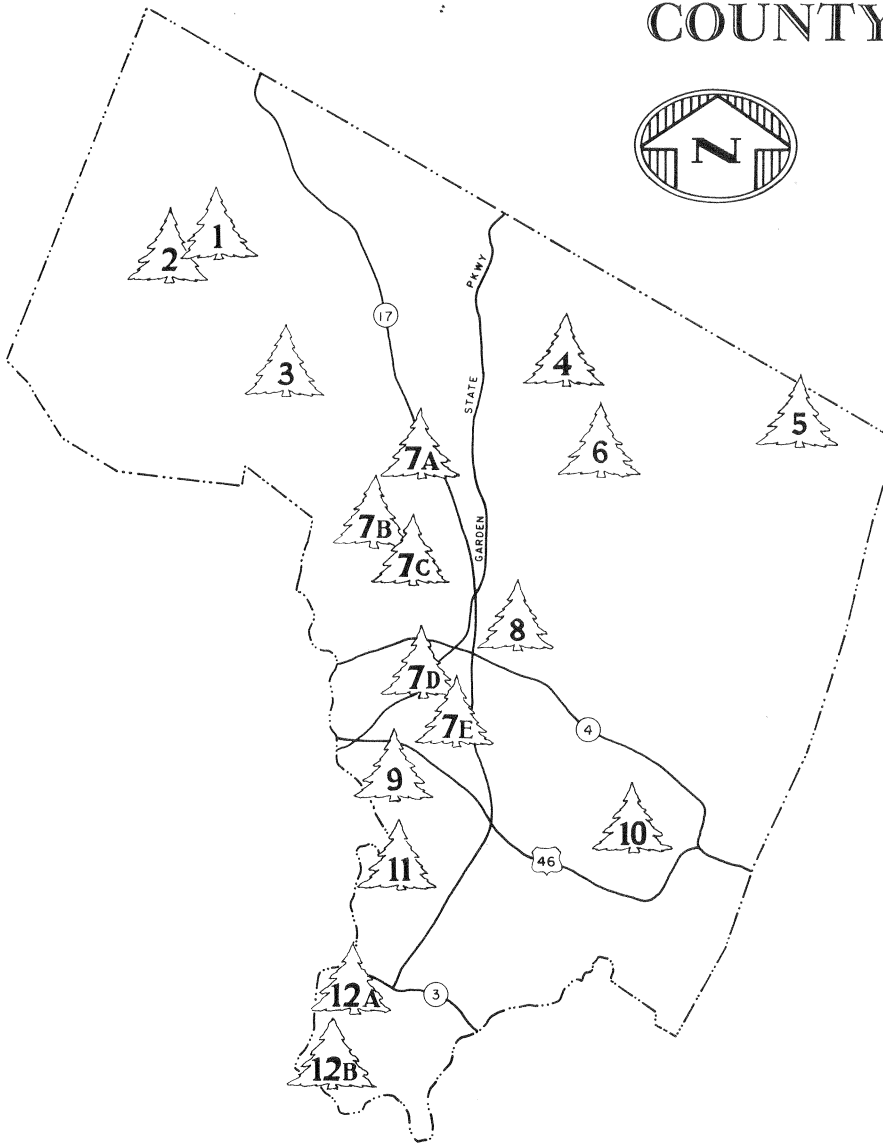
December 31st, 1967

Date	Former Owner	Town	Area	Total Acreage	Total Cost	50% of Cost Received
1/13/62	E. Carman et al	Norwood	N. E. Bergen	86.80	\$ 260,000.00	\$ 130,000.00
3/18/63	Baier & Kinz	Alpine	N. E. Bergen	93.10	400,000.00	200,000.00
4/26/63	J. Henkel et al	Wyckoff &) Waldwick)	N. W. Bergen	81.35	400,000.00	200,000.00
1/15/64	Various Parcels	Alpine	N. E. Bergen	97.45	310,000.00	155,000.00
2/ 9/65	Various Small) Parcels)	Paramus	Saddle River	3.63	50,250.00	25,125.00
3/17/65	First Nat'l. Bank, Passaic County, Trustees	Mahwah) and) Ramsey)	N. W. Bergen	178.26	1,150,000.00	575,000.00
6/15/67	C & K Weleck	Mahwah	N. W. Bergen	59.75	137,418.00	68,709.00
		Total Acreage Acquired		<u>600.34</u>	<u>\$2,707,668.00</u>	<u>\$1,353,834.00</u>
1/11/66	County of Bergen	Teaneck) Leonia) Englewood) Palis. Pk.) Ridge. Pk)	Overpeck	Tidal Lands 399.29	400,000.00	200,000.00
					<u>\$3,107,668.00</u>	<u>\$1,553,834.00</u>

NOTE: In addition to the above participating funds we also received from the U. S. Government Open Space Land Program on August 2nd, 1965 its participating sum of \$189,068.00 towards the acquisition of the Darlington Country Club property in Mahwah and Ramsey.

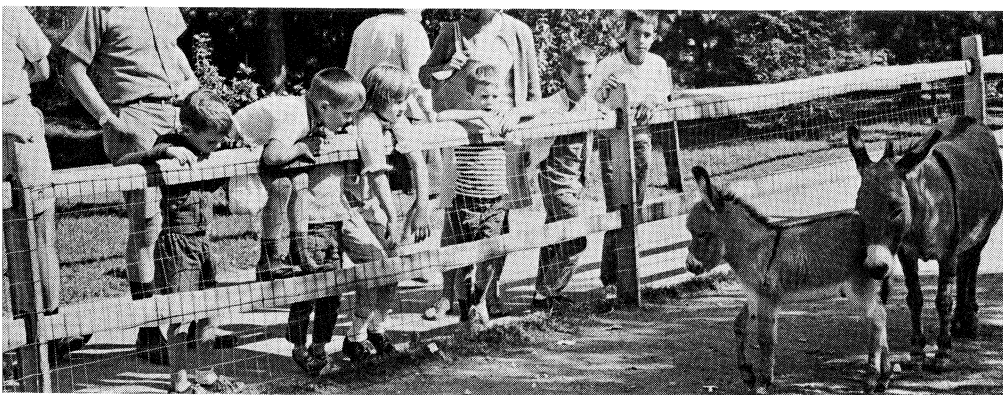
We also have a commitment of \$148,568.09 from the U. S. Government, Bureau of Outdoor Recreation towards the cost of improvements installed at the Wyckoff Wildlife Center.

COUNTY PARK LOCATIONS

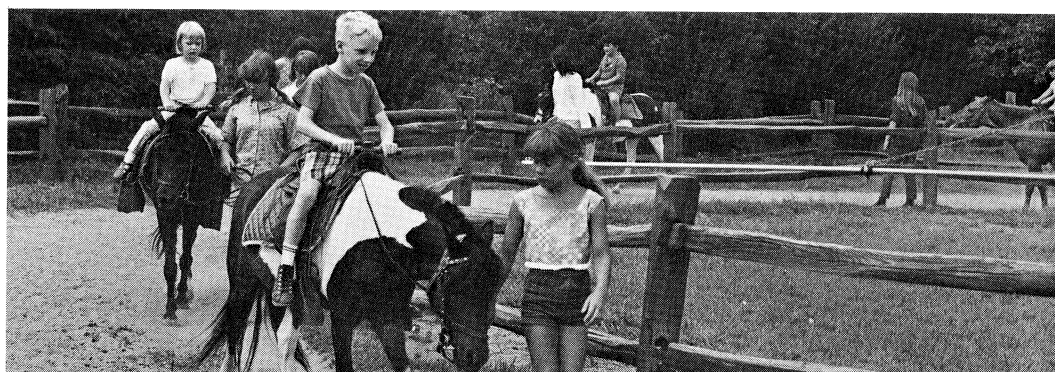


1. Darlington County Park (Entrance fee Memorial Day - Labor Day)
Park is on Darlington Avenue, Mahwah
2. Campgaw Mountain County Reservation
Entrance on Campgaw Road, Mahwah
3. Bergen County Wildlife Center
Entrance on Crescent Avenue, Wyckoff
4. Wood Dale County Park
Entrance on Prospect Avenue, Woodcliff Lake
5. Rockleigh Bergen County Golf Course
Entrance on Paris Avenue, Rockleigh
6. Pascaek Brook County Park
Entrance on Emerson Road, Westwood
7. Saddle River County Park
 - A. Wild Duck Pond Area
East Ridgewood Avenue, Ridgewood
 - B. Glen Rock Area
Alan Avenue, just east of Prospect Street
 - C. Dunkerhook Area
Dunkerhook Road, Paramus
 - D. Saddle Brook Area
Saddle River Road, Saddle Brook
 - E. Rochelle Park Area
Howard Avenue, Rochelle Park
8. Van Saun County Park
Entrances on Forest and Continental Avenues, Paramus, and Howland Avenue, River Edge
9. County Parks in Garfield
Dahnert's Lake
Entrance on Midland Avenue
Belmont Hill
Entrance on Botany Street
10. Overpeck County Park
Overpeck Bergen County Golf Course (Scheduled to open May 15, 1968)
Entrance on Cedar Lane, Teaneck
Teaneck play area — DeGraw Avenue
Leonia play area — Fort Lee Road
11. Wallington County Park
Entrance on Maple Avenue, Wallington
12. Riverside County Park
 - A. North Area
Riverside Avenue, Lyndhurst
 - B. South Area
River Road, North Arlington

PIGMY DONKEYS pose at the zoo in Van Saun Park.



PONY RIDES at Van Saun Park delight young visitors.





Bergen County Park Commission
Annual Report, 1967
