

Bergen County Park Commission  
Annual Report, 1965

## BERGEN COUNTY PARK COMMISSION, 1965 HACKENSACK, NEW JERSEY

Rudolph A. Travers, President

Bernard H. Johnson, Vice President  
Peter J. Russo, Assistant Secretary  
Dr. George L. Kingslow  
George M. Gillette, Jr.

William Staubach, Secretary  
Harold M. Davison \*  
Harold J. Hollenbeck  
Otto C. Pehle  
Frederick E. Wendel \*\*

James A. McFaul, Executive Director

Herbert H. Handelsmann, Staff Director

George A. Duffy, Assistant County Counsel

\* Term expired January 22, 1965

\*\* Appointed January 22, 1965

## BOARD OF CHOSEN FREEHOLDERS, 1965

Robert L. Olson, Director

Mrs. Bernice Alexander  
Cassius H. Daly, Jr.  
Albert Moskin  
Edmund E. Field, Jr.

Alfred S. Walden, Chairman  
County Parks Committee  
Harold Martin  
D. Bennett Mazur  
Eugene E. Walsh

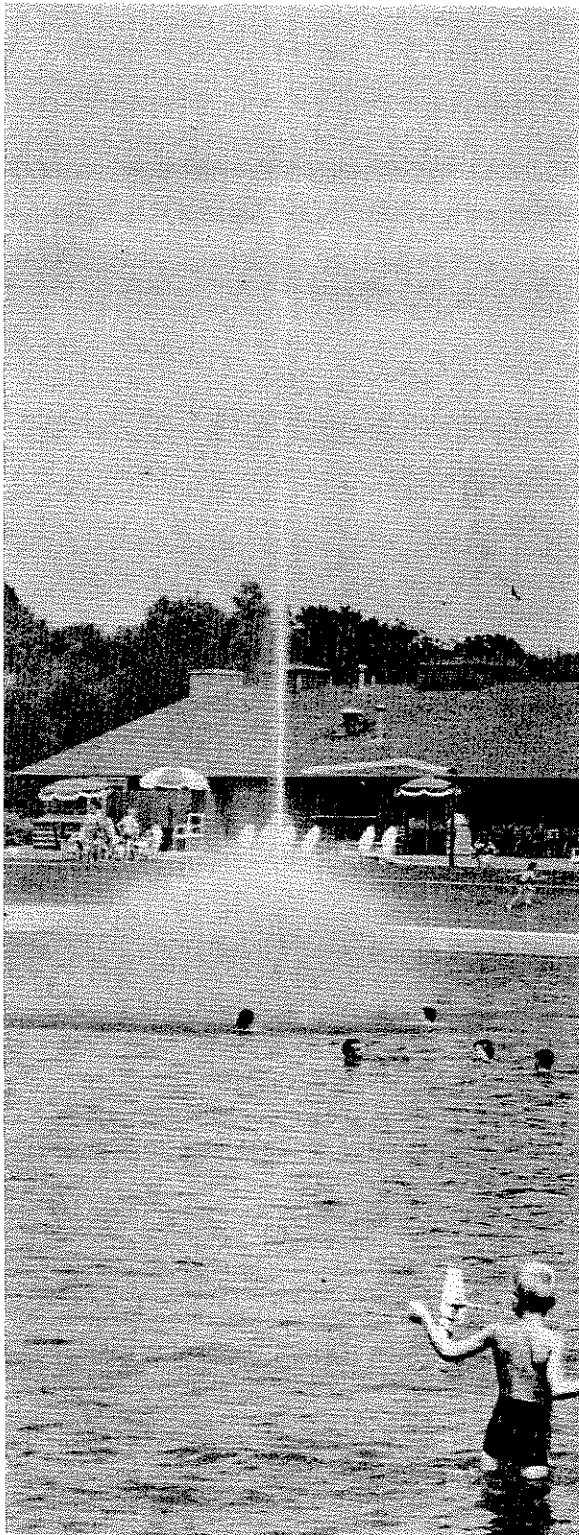
William R. Smith, Executive Administrator

Nelson G. Gross, County Counsel

Richard L. Nelson, Assistant Executive Administrator



**COVER PICTURE:** *Model boats set sail in the lake at Saddle River County Park's Glen Rock Area, which opened in October. The lake also affords fishing and duck feeding. Picnic and playground facilities are provided.*



*In the swim at Darlington County Park.*

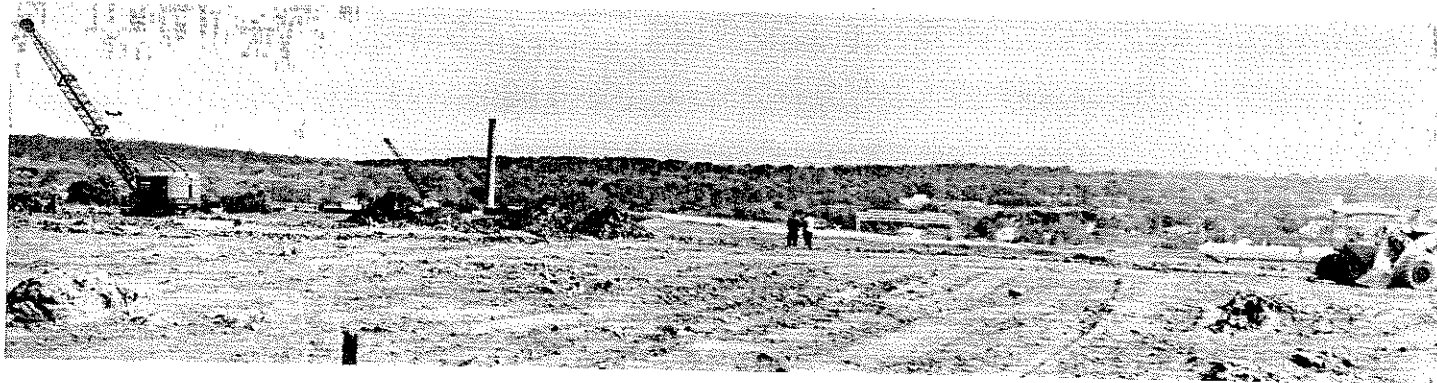
The nineteenth recreation area in the Bergen County park system was opened in 1965, the nineteenth year of the County Park Commission. With the addition of Darlington County Park's swimming lakes and games courts, there are facilities now for 25 activities in the park network.

The pace of expansion and development has been stepped up more and more, to meet the increasing need for outdoor recreation facilities. Visits to the parks set a new record every year.

We are on the threshold of a new era of year-round recreation opportunities. A ski center, indoor ice rink, horticultural center, new golf course, and linear park flanking the Saddle River are among developing projects which will broaden the scope of the park system.

With the co-operation and support of the Bergen County Board of Freeholders, the Park Commission has been planning and building for the future while expanding recreation facilities for today's residents.

Rudolph A. Travers  
President



Groundwork is under way for an 18-hole golf course at Overpeck County Park.

## Building For Today And The Future

Three park facilities were opened in 1965 by the Bergen County Park Commission, and strides were taken in the development of three major long-term projects.

Attendants' records indicate that visits to the County parks totaled approximately 3.1 million, a new high.

### Three Openings in 1965

Facilities opened during the year were:

Three-lake Darlington County Park, equipped for swimming, picnicking, fishing, rental boating, and six outdoor court games.

The Glen Rock Area of Saddle River County Park, with picnic tables, ice skating rink, two shelters, a children's playground, and a garden overlooking a curving lake.

A recreated farm scene of the 1860s, beside the miniature railroad in Van Saun County Park, with a display of antique implements in and about the carriage shed.

### Three Long-Term Projects

The long-term projects furthered in 1965 were Overpeck County Park,

Saddle River County Park, and a garden center and wildlife observatory planned for the 81-acre County park site in Wyckoff.

The Commission's biggest project was construction work for the 18-hole golf course scheduled to open in the summer of 1967 in the Tea-neck section of the Overpeck County Park site. Excavation of ponds, installation of corrugated pipe, the moving of 170,000 yards of soil, and rough grading of the entire course were 1965 contributions to construction of the course.

### Big Plans for Overpeck

Plans were made to begin dredging operations in the spring of 1966 to prepare the remainder of the 800-acre meadowland site for gradual development as a family recreation center.

An agreement concluded with the State August 13 settled title and financial differences, enabling major development to get under way after a long series of obstacles.

Saddle River County Park develop-

ment was furthered in 1965 by the grading and seeding of some 45 acres of riverside north of Route 4 and by site work for the first section of the park's projected linear road system. Banks south of Route 4 were seeded in previous years.

### Park Will Flank Saddle River

Acquisition of streamside property continued during the year. Eventually, the linear park will flank the Saddle River for 5½ miles.

The park road system's first section will be in Rochelle Park, from Railroad Avenue north to Sprout Brook, and will provide access to County parkland in Rochelle Park on the east side of the stream.

Land-clearing and grading work for the mile-long park drive on the 81-acre park site in Wyckoff was completed in 1965. Clearing and grading the rest of the Crescent Avenue tract is the major 1965-66 winter project of the Park Commission construction crew.

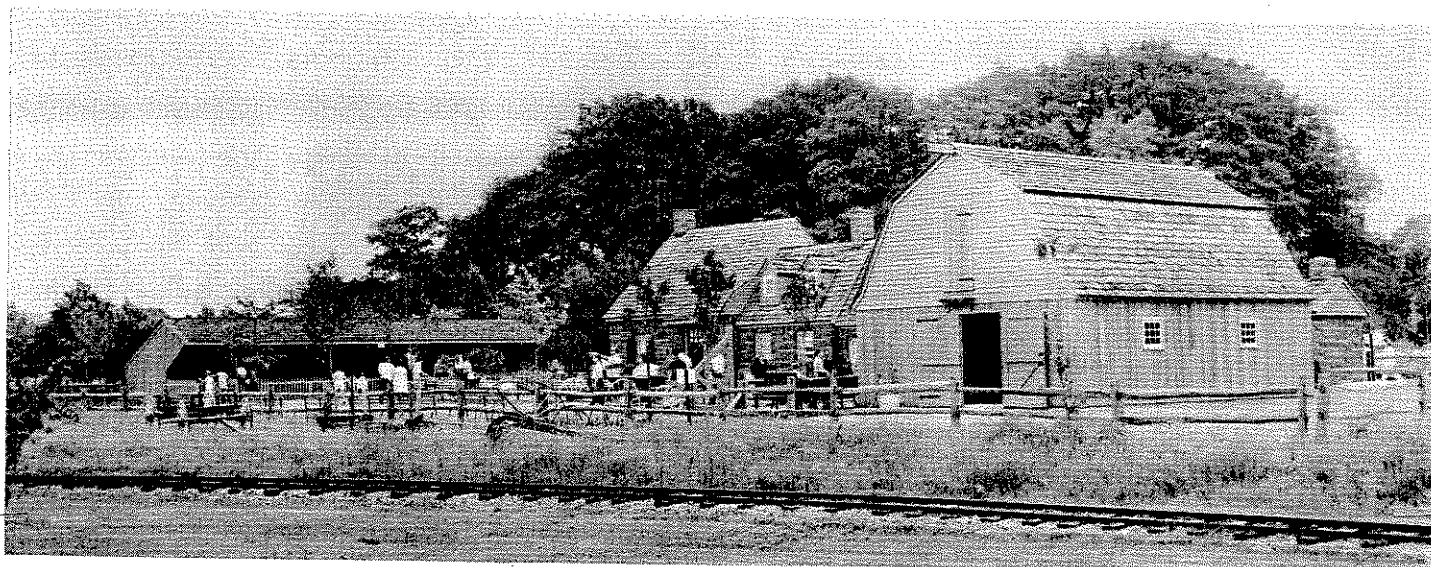
### Contract For New Pond

A contract was awarded for excavation of a 2½-acre wild life pond in the wooded southeast corner of the site, and a wildlife observatory building was designed. The building is to be constructed in 1966.

An engineering firm was hired to draw up detailed plans and specifications for a ski center in Mahwah, and preliminary studies of the terrain were made.



A roadbed is prepared for the first section of park drive along the Saddle River. The drive starts in Rochelle Park.



*A recreated farm scene of the 1860s adds interest to the children's railroad in Van Saun County Park. Antiques are displayed in the carriage shed, at right.*

Structures erected in County parks during 1965 included four comfort stations, two picnic shelters, an octagonal garden shelter, three golf course shelters, a maintenance building, a prestressed concrete footbridge, and a prestressed concrete maintenance bridge.

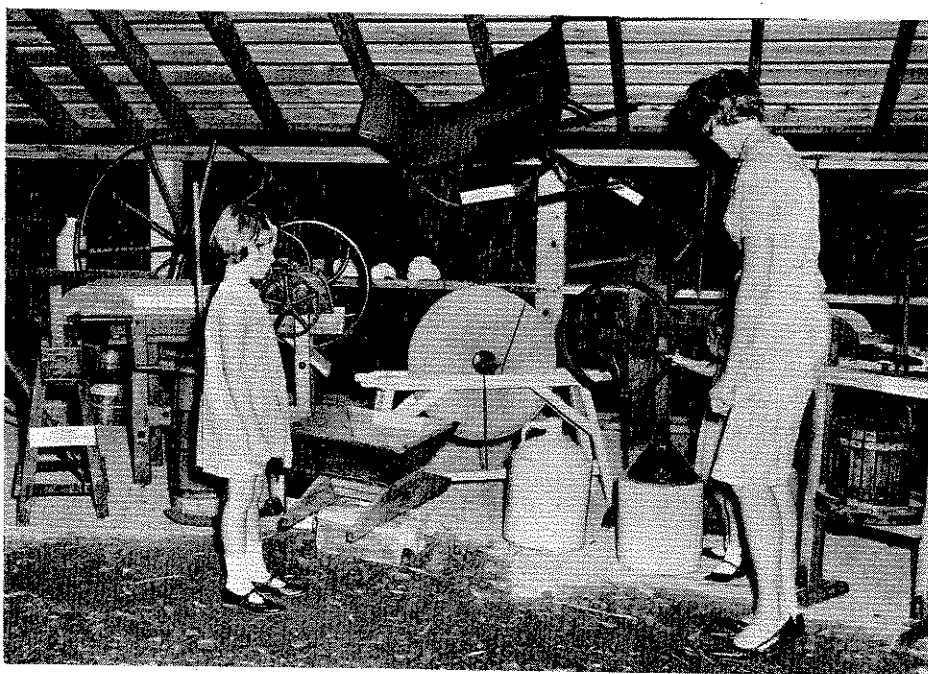
#### **On And Below The Ground**

A partial listing of other 1965 construction and site-work totals indicates the range of jobs undertaken by the Park Commission: 3,000 linear feet of drive paved, parking spaces for 80 cars added, 170 acres graded, a mile of various types of pipe laid — including 680 feet of reinforced concrete pipe 3 feet in diameter, 187,000 cubic yards of fill placed, 64,000 yards of sandy soil placed, 1,800 linear feet of riverbed dredged, and 2,100 linear feet of underground electric line laid.

Equipment purchased during the year included three dump trucks, four heavy tractors, five pickup trucks, and 18 power mowers.

#### **Sharp Rise in Fee Revenue**

Revenue from fee facilities totaled \$403,505 as compared to \$210,055 in 1964. Reasons for the 92 per cent jump were: increased use of facilities, particularly the Rockleigh Bergen County Golf Course with its 9-hole addition; adjustment of some fee schedules; and the acquisition of Darlington County Park, which grossed \$98,620 in the first swimming season. Other gross revenue totals for



1965 were: \$38,848, the children's railroad at Van Saun County Park; \$251,927, Rockleigh Bergen County Golf Course; \$8,648, tennis center at Van Saun; \$5,047, permits for campsites and for picnic groups of more than 50 persons; \$415 for use of the boat ramp in North Arlington.

The State Green Acres program paid half the \$1,150,000 Darlington purchase price, and the Federal Government made a \$189,068 grant toward the purchase.

#### **Park Comes Complete**

The 178-acre property included 14 structures, beaches, roads, dams, bridges, fences, and all the appropriate equipment and supplies.

Extension of the Upper Lake beach by some 300 feet and the purchase of new white sand for the Lower

Lake beach were the only major changes undertaken by the Park Commission.

Other 1965 additions to the park system's recreation facilities included new playgrounds at Wallington County Park and the Dunkerhook Area of Saddle River County Park and the paving of the ice skating rink at the Saddle Brook Area of Saddle River County Park. The Commission added playground equipment throughout the park system.

#### **Play Equipment Added**

Four sets of basketball backstops were placed at paved areas. In Riverside County Park South, North Arlington, portable tennis nets were added at the paved rectangle which is flooded for ice skating in winter. Two new pedal boats joined the Dar-



*Land-clearing and grading work is done for the mile-long drive on the Bergen County Garden Center site in Wyckoff. Work has started on the site's wildlife center.*

### Reminders of An Earlier Era

A fringed surrey, buggy, buck-board wagon, and 2-seater sleigh are among antiques parked in the carriage shed at the recreated 1860s farmyard in Van Saun Park. The display includes such old-time appliances as a butter churn, spinning wheel, candle mold, and cider press. Antique agricultural implements in the farmyard and surrounding fields can be seen from the train, which is pulled by a miniature replica of an 1866 locomotive.

Old-fashioned flower, vegetable, and herb gardens and a small orchard were planted at the recreated farm scene, with its authentic replicas of structures commonly found in Bergen County 100 years ago.

In addition, the Park Commission's landscaping crew sowed 4 tons of grass seed and planted 9,550 bulbs, 295 shade trees, 175 flowering trees, 340 flowering shrubs, 115 evergreens, and 200 flats of assorted flowers throughout the County park network during the year.

### Planting on Large Scale

At the Rockleigh Bergen County Golf Course, 64,000 square feet of sod were laid on hard-wear areas. Seed was planted on the course's new 45,000-square-foot sod nursery.

Renovation of the rose garden atop Belmont Hill County Park was completed, with 50 new plants of recently developed varieties.

lington Park rental fleet. Additions to the County parks also included 165 picnic tables, 30 raised grills, and 55 park benches.

During Christmas week free rides were given on the children's railroad in Van Saun Park.

More than 250 children participated in the free tennis clinics conducted during the summer vacation. The annual tennis tournament in Van Saun Park set a record for entries. There were 72 entrants in the men's singles, 40 men's doubles teams, 23 entrants in the women's singles, 13 women's doubles teams, and 24 mixed doubles teams.

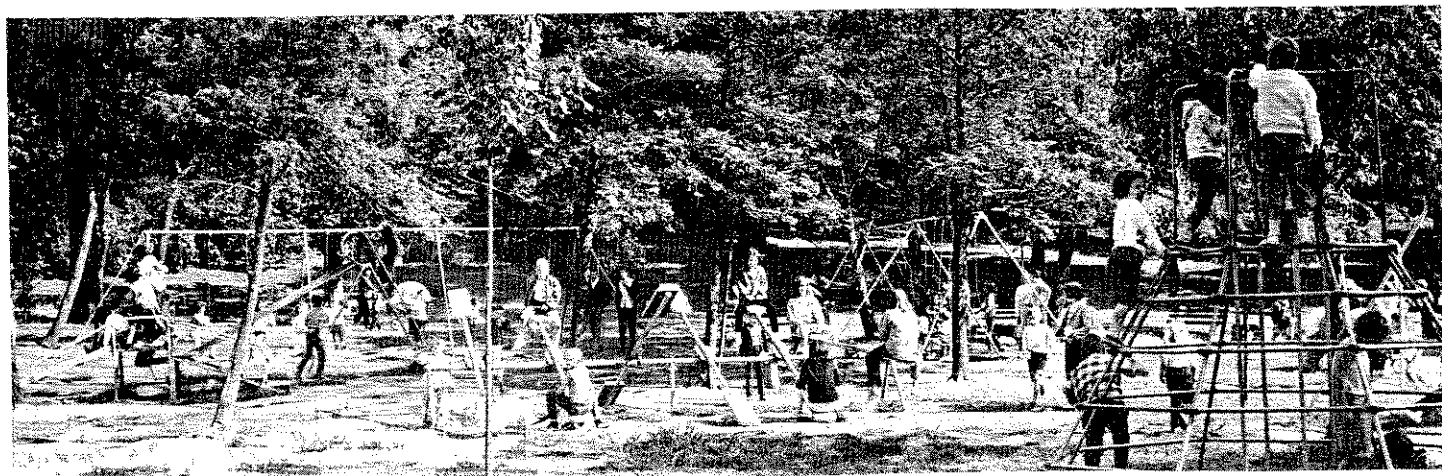
### Music, Art, and History

Cultural activities in 1965 were seven band concerts in the parks and the first annual art exhibition, which was held outdoors at Van Saun Park

with the assistance of the Bergen County Artists Guild. More than 1,000 paintings were shown. Six of the band concerts were professional, with the cost borne jointly by the Park Commission and the Musicians' Mutual Protective and Benevolent Union of Paterson. The seventh program was presented by the United States Military Academy Band, with the Park Commission and Bergen County Chamber of Commerce as co-sponsors. Financial assistance was given by the Peoples Trust Company.

The Park Commission financed preparation of an exhibit featuring mastodon bones unearthed in Hackensack in 1962. Preparation was undertaken by the American Museum of Natural History, with the Bergen Community Museum acting as the Park Commission's consultant.

*Wallington County Park adds a playground. An old fire engine is included.*





*Paintings are hung on the tennis center fence in Van Saun County Park at the first annual art exhibition. At left, the band plays on for one of seven concerts in the parks.*



The 4-year drought necessitated irrigation at many County park areas. Water was pumped from lakes and wells. A new irrigation well and a well for drinking water were drilled at the Rockleigh Bergen County Golf course, and installation of an irrigation system for 10 fairways was well under way by the end of the year.

#### **Permits Set A Record**

A record 2,299 permits were issued in 1965 for group activities, chiefly picnics. Permits were issued for such diverse activities as an Easter sunrise service, a model sailing yacht regatta, senior citizens' picnic, scouting demonstrations, and the viewing of a lunar eclipse through telescopes.

The Commission inaugurated fees for picnic groups of 50 or more persons and for campsite permits. The picnic fees were established to help defray the extra cleanup expense. Camping fees help to offset the cost

of extra patrolling as well as specialized maintenance.

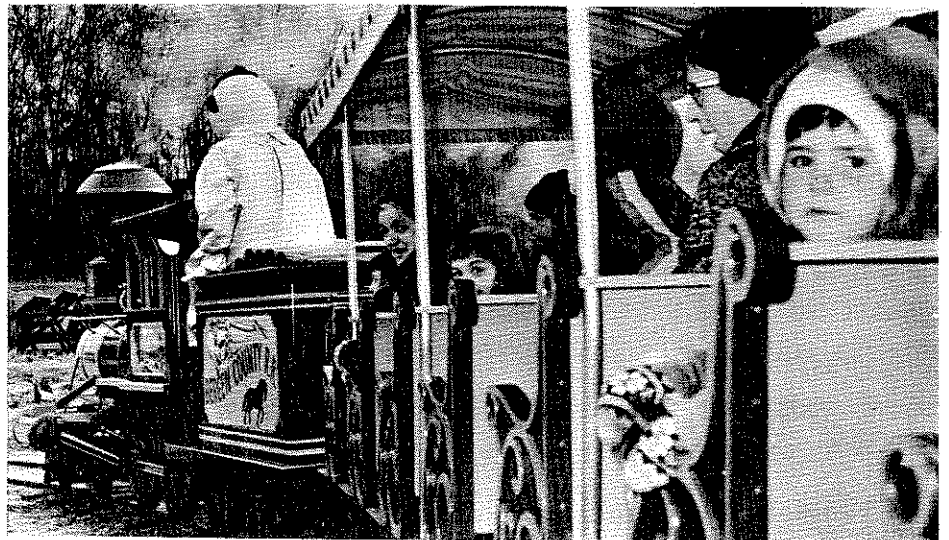
A new park system guide and a Darlington Park brochure were distributed in the spring.

#### **New Refuse-Disposal Plan**

Few park systems in the nation have a refuse-collection operation as streamlined as that adopted in 1965 by the Park Commission. The new truck tours the parks and other County facilities.

Robot arms controlled by the driver pick up the special metal containers, dump the contents in the truck's hopper opening, and set the emptied container down. A hydraulically powered packer plate exerts 68,000 pounds of pressure and reduces the refuse to about a quarter of its loose bulk. For load dumping at the County land fill site, the packer plate pushes the load from the truck.

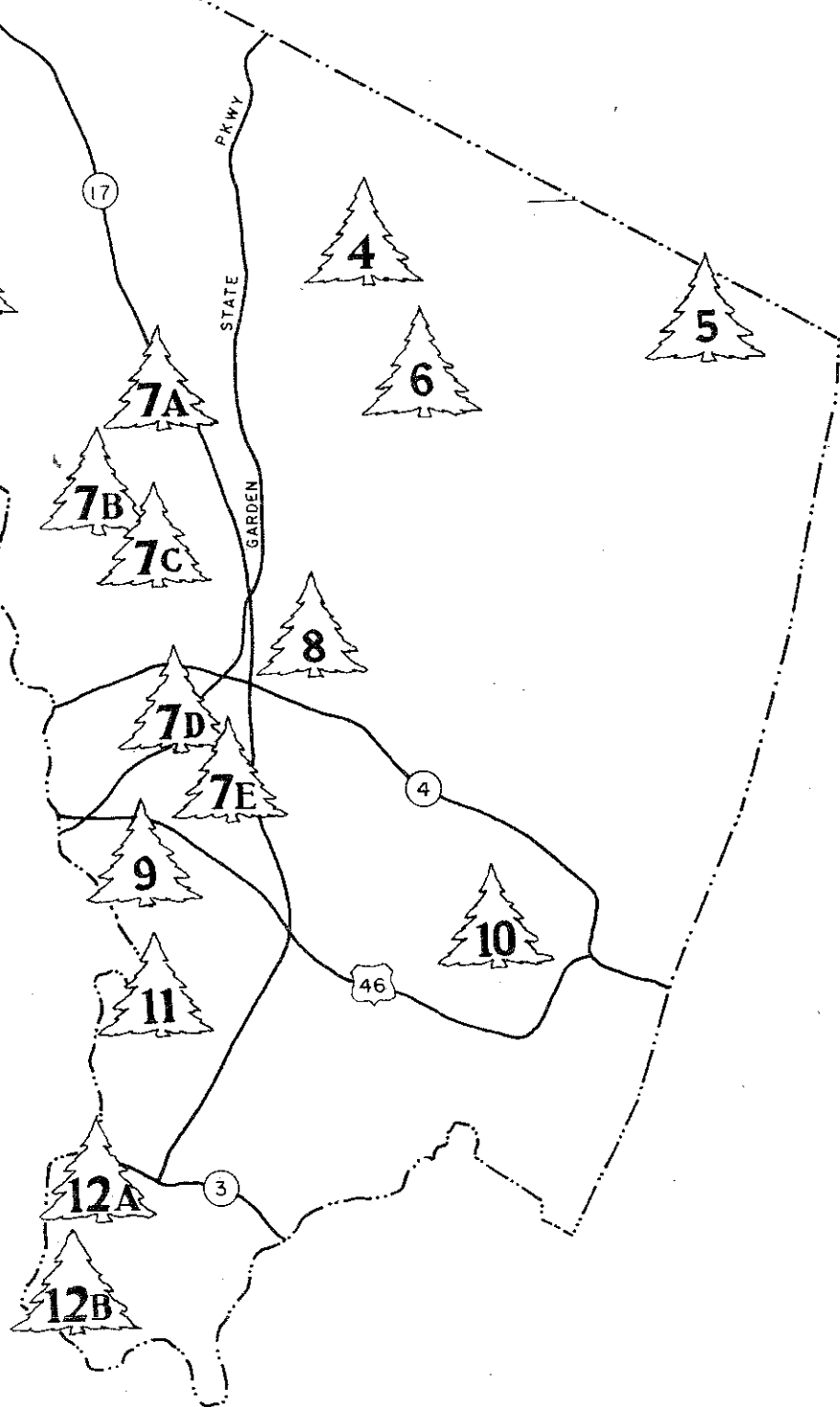
Some of the large refuse containers in the parks are on wheels. These can be hitched to tractors and pulled through the parks for quick emptying of litter baskets. Two or more containers can form a train behind the tractor.



**THE RECORD PHOTO**  
*A snowman engineer drives the holiday train during Christmas Week. Fares are suspended in the spirit of the season.*

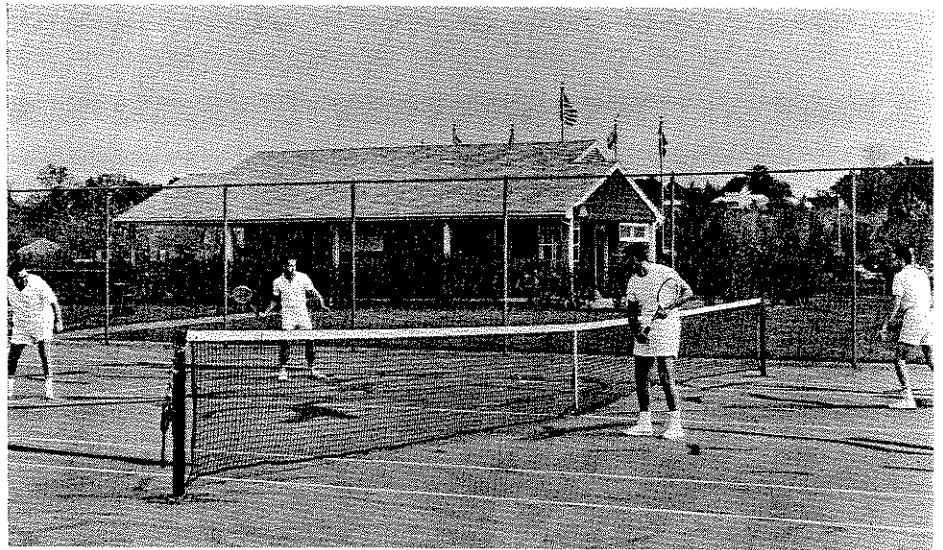
# Bergen County

1. Darlington County Park  
(Entrance fee May 28 - Labor Day)  
Entrance on Darlington Ave., Mahwah
2. Campgaw Mountain County Reservation  
Entrance on Campgaw Road, Mahwah
3. Bergen County Wildlife Center  
Entrance on Crescent Avenue, Wyckoff  
To Open Autumn 1966.
4. Wood Dale County Park  
Entrance on Prospect Ave., Woodcliff Lake
5. Rockleigh Bergen County Golf Course  
Entrance on Paris Avenue, Rockleigh
6. Pascack Brook County Park  
Entrance on Emerson Road, Westwood
7. Saddle River County Park
  - A. Wild Duck Pond Area  
Entrance on East Ridgewood Avenue, Ridgewood
  - B. Glen Rock Area  
Entrance on Alan Avenue, just east of Prospect Street
  - C. Dunkerhook Area  
Entrance on Dunkerhook Road, Paramus
  - D. Saddle Brook Area  
Entrance on Saddle River Road
  - E. Rochelle Park Area  
Entrance on Howard Avenue
8. Van Saun County Park  
Entrances on Forest and Continental Avenues, Paramus and on Howland Avenue, River Edge
9. County parks in Garfield  
Dahnert's Lake  
Entrance on Midland Avenue  
Belmont Hill  
Entrance on Botany Street
10. Overpeck County Park  
Entrances on Fort Lee Road, Leonia  
DeGraw Avenue, Teaneck
11. Wallington County Park  
Entrance on Maple Avenue, Wallington
12. Riverside County Park
  - A. North Area  
Entrance on Riverside Avenue, Lyndhurst
  - B. South Area  
Entrance on River Road, North Arlington



# Park System

*A doubles match is in play at Van Saun County Park.*



## Saddle River County Park

### Dunkerhook Area

Picnic tables and fireplaces, two picnic shelters, duck feeding, children's play equipment, horseshoe courts, parking, comfort station.

### Glen Rock Area

Lake, duck feeding, fishing, model-boat sailing, picnic tables and fireplaces, two shelters, children's play equipment, ice skating, parking.

### Rochelle Park Area

Ice skating, basketball sets and volleyball net at rink, picnic tables and fireplaces, parking.

### Saddle Brook Area

Lake, duck feeding, fishing, model-boat sailing, baseball, football, children's playground, ice skating, picnic tables and fireplaces, shelter, horseshoe courts, comfort station, pedestrian entrance, parking.

### Wild Duck Pond Area

Pond, ice skating, duck feeding, model-boat sailing, fishing, picnic tables and fireplaces, shelter, shuffleboard, horseshoe courts, children's playground, patio for skaters, recreation room, comfort station, parking.

## Van Saun County Park

### Paramus and River Edge

Children's zoo and playground, children's railroad, reconstructed 1860s farm scene, 12 tennis courts, picnic tables and fireplaces, three picnic shelters, shaded garden around historic Washington Spring, pony rides, bridle trails, exhibition horse-show paddock, horses for hire, riding lessons available, duck feeding, shuffleboard, horseshoe courts, lake, model-boat sailing, fishing, ice skating, sledding slopes, ball fields, open play area, comfort stations, refreshment center, parking.

## Wallington County Park

### Wallington

Pond, ice skating, fishing, model-boat sailing, sledding slopes, baseball, football, picnic tables and fireplaces, playground.

## Bergen County Wildlife Center

(Of Projected County Garden Center)

### Wyckoff

Wildlife pond, observatory building, nature trails, parking area. Observatory building will have window walls overlooking pond, wildlife display hall, browsing library, meeting rooms. Area to open in fall of 1966.

## Wood Dale County Park

### Woodcliff Lake, Hillsdale, Park Ridge

Lake, ice skating, duck feeding station, fishing, model-boat sailing, picnic tables and fireplaces, picnic shelter, tennis, children's play equipment, parking, comfort station.

## Belmont Hill County Park

### Garfield

Rose garden, scenic lookout, children's play equipment, picnic tables, parking.

## Campgaw Mt. County Reservation

### Mahwah, Franklin Lakes, Oakland

Nature trails, wild life sanctuary, overnight camping sites, tent platforms and adirondack shelters, picnic tables and fireplaces, children's play equipment, ranger service, parking, comfort station.

## Dahnert's Lake County Park

### Garfield

Pond, ice skating, duck feeding, fishing, model-boat sailing, picnic tables and fireplaces, children's play equipment, comfort station.

## Darlington County Park

### Mahwah and Ramsey

Three lakes, two for swimming and one for fishing and boating. Clubhouse with restaurant and snack bar, terraces. Locker rooms, pavilion, comfort stations, children's playground, picnic tables and fireplaces. Day camp. Facilities for tennis, handball, volleyball, softball, shuffleboard, basketball, ping-pong, horseshoe pitching, and parking.

Entrance fee May 28 - Labor Day.

## Overpeck County Park

### Leonia Area

Baseball, picnic tables and fireplaces, ice skating, basketball sets at rink, portable volleyball net, parking.

### Teaneck Area

Baseball, golf course under construction, parking.

## Pascack Brook County Park

### Westwood and River Vale

Baseball, softball, football, bleachers and benches, parking.

## Riverside County Park

### North Area, Lyndhurst

Picnic tables and fireplaces, shelter, baseball and softball, ice skating, basketball sets and portable volleyball net at rink, shuffleboard and horseshoe courts, children's playground, refreshment center, comfort station, parking.

### South Area, North Arlington and Lyndhurst

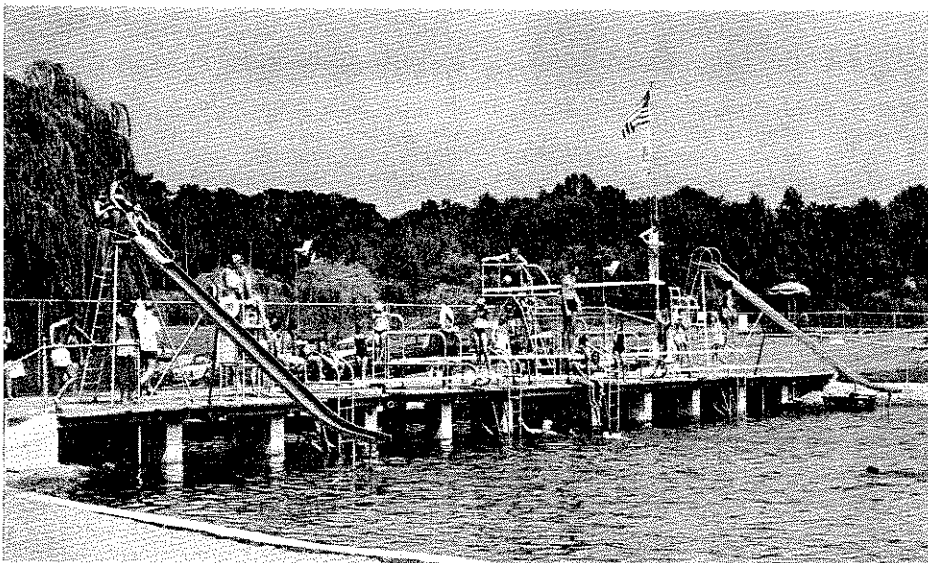
Small-boat launching installation, ice skating, portable tennis nets at rink, baseball, softball, horseshoe courts, picnic tables and fireplaces, children's playground, tennis, model railroad tracks, football, comfort station, parking.

## Rockleigh Bergen County Golf Course

### Rockleigh, Northvale, Norwood

Twenty-seven holes. Clubhouse with snack bar, pro shop, terrace. Shelters, parking.

*Darlington Park has diving facilities at two lakes.*



**Bergen County Park Commission**  
**LAND ACQUISITION PROPERTIES COMMITTED OR ACQUIRED**  
**Bond & Budget Accounts**

Close of December 31, 1965

Description	SUB-TOTALS		TOTALS	
	Acres	Cost	Acres	Cost
<i>Private Properties Committed or Acquired</i>				
Reported close of December 31, 1964 .....	2,689.06	\$3,519,234.07		
Adjustment or Exchanges Year 1965 .....	— 0.51	—0—		
			2,688.55	\$3,519,234.07
<i>Private Properties Committed or Acquired in 1965</i>				
Three (3) Parcels of Land were committed or acquired in three (3) areas .....	179.14	1,150,000.00		
Two (2) Parcels of Water Rights acquired .....	—0—	1,000.00		
			179.14	1,151,000.00
<i>Municipal Properties Committed or Acquired</i>				
Reported close of December 31, 1964 .....	1,161.24	3,002.00		
Returned, Exchanged or adjusted Year 1965 .....	—0—	—0—		
			1,161.24	3,002.00
<i>Municipal Properties Committed or Acquired in 1965</i>				
One (1) Parcel of Land Committed .....			4.29	—0—
			<u>4,033.22</u>	<u>\$4,673,236.07</u>

**AUDITOR'S REPORT**

March 5, 1966

Bergen County Park Commission  
Administrative Building  
Hackensack, New Jersey

Gentlemen:

I have examined the financial records of the Commission for the year ending December 31, 1965 and, as a result of this examination, I submit the following:

**BUDGET FUNDS**

SURPLUS, JANUARY 1, 1965 .....	\$ 129,345.53
PLUS: CANCELLATION OF PRIOR YEARS' COMMITMENTS .....	112,333.16
ADJUSTED SURPLUS, JANUARY 1, 1965 .....	\$ 241,678.69
BUDGET APPROPRIATIONS - 1965 .....	1,700,796.00
	<u>\$1,942,474.69</u>

**EXPENDITURES:**

Salaries and Wages .....	\$ 868,413.09
Office Operating Expenses .....	54,951.64
Engineering and Drafting .....	2,467.57
Land Acquisition .....	14,816.86
Field Operating Expense .....	38,841.84
New Field Equipment .....	44,280.88
Maintenance Materials .....	760,920.88

BUDGET APPROPRIATION RESERVES .....	\$1,784,692.76
	16,103.24

1,800,796.00

SURPLUS, DECEMBER 31, 1965 .....	<u>\$ 141,678.69</u>
----------------------------------	----------------------

**BOND ISSUES**

BALANCE AVAILABLE, JANUARY 1, 1965 .....	\$ 91,521.37
IMPROVEMENT AUTHORIZATIONS - 1965 .....	1,170,000.00
	<u>\$1,261,521.37</u>
LESS: DISBURSED AND COMMITTED FOR LAND ACQUISITION AND IMPROVEMENTS .....	1,152,253.56
BALANCE AVAILABLE, DECEMBER 31, 1965 .....	<u>\$ 109,267.81</u>

All vouchers were examined and found to be properly approved. Checks issued in payment of these vouchers were compared with both the voucher and the entry in the financial records. These were found to be correct.

Cash in banks was reconciled with the book figures.

Respectfully submitted,

*J. Edward Schierloh*

Certified Public Accountant  
(N. J. & N. Y.)

## **A LOOK AHEAD**

### **Scheduled:**

Fall of 1966 — opening of Bergen County Wildlife Center in Wyckoff.

Summer of 1967 — opening of 18-hole golf course in Teaneck.

### **In the Planning Stage:**

Ski center in Mahwah, with snow-making equipment, lift, and shelter.

Variety of recreation facilities on the Overpeck County Park site.

Indoor ice arena.

Horticultural center with model gardens, conservatory, and arboretum in Wyckoff.

Linear park flanking the Saddle River for 5½ miles.



Bergen County Park Commission  
Annual Report, 1965