



Bergen County Park Commission
Annual Report, 1964

BERGEN COUNTY PARK COMMISSION, 1964

HACKENSACK, NEW JERSEY

Rudolph A. Travers, President

Bernard H. Johnson, Vice President
Peter J. Russo, Assistant Secretary
Dr. George L. Kingslow
George M. Gillette, Jr.

William Staubach, Secretary
Harold M. Davison
Harold J. Hollenbeck
Otto C. Pehle

James A. McFaul, Executive Director

Herbert H. Handelsmann, Staff Director

George A. Duffy, Assistant County Counsel

BOARD OF CHOSEN FREEHOLDERS, 1964

Arthur W. Vervaet, Director

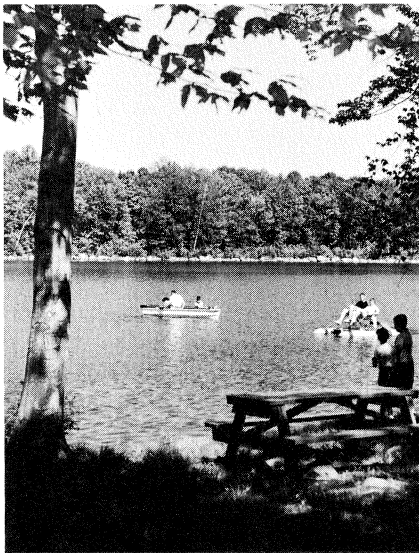
Mrs. Bernice Alexander
Cassius H. Daly, Jr.
Albert Moskin
Anthony Pepe
Edmund E. Field, Jr.

Frank V. Jerlinski
Robert L. Olson
Alfred S. Walden, Chairman
Parks Committee

William R. Smith, Executive Administrator

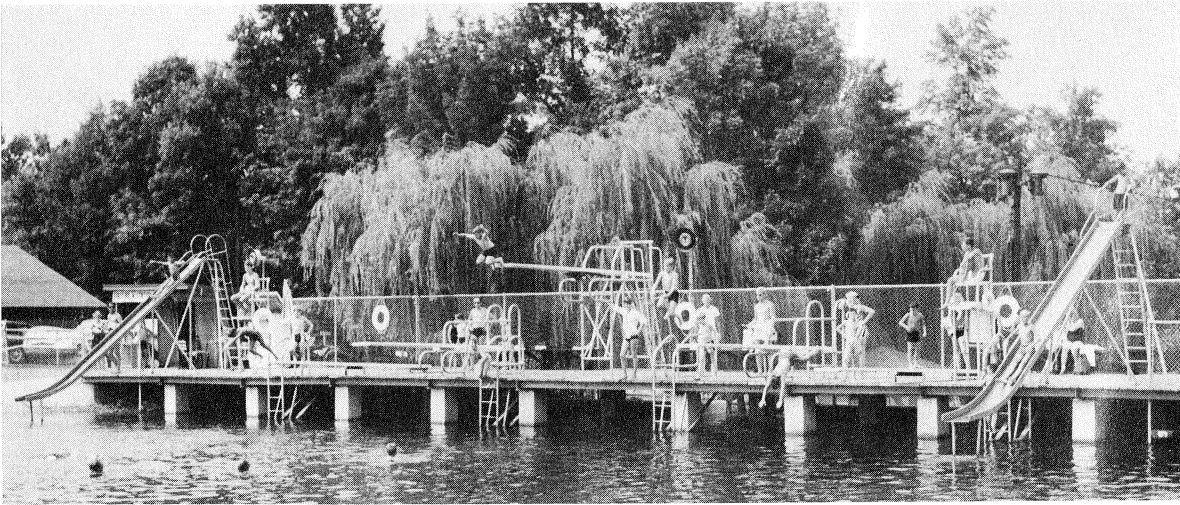
Nelson G. Gross, County Counsel

Richard L. Nelson, Assistant Executive Administrator



COVER PICTURE: Boating and fishing are enjoyed at the largest of the three lakes on the Darlington County Park site in Mahwah and Ramsey. The contract for acquisition of the site was signed in November.

The two swimming lakes at the Darlington County Park site have olympic diving equipment.



In 1964 the Bergen County park system entered an era of broad expansion and development.

The contract for the purchase of Darlington Country Club property brought swimming and boating into the park picture. Other innovations included replicas of old-time buildings and a small-boat launching installation.

Groundwork began in 1964 for major development of Overpeck County Park, which has been plagued by obstacles. A lake was excavated in Glen Rock, and a 9-hole addition was opened at the Rockleigh Bergen County Golf Course.

Plans were drawn for an 18-hole golf course in the Teaneck section of Overpeck Park and for an arboretum and horticultural center on a former pig farm in Wyckoff. A ski center and an artificial-ice rink are included in a capital-funds projection for 1965-1970.

More and more leisure-time opportunities are opening as the Bergen County Board of Freeholders and Park Commission continue efforts to meet the ever-growing outdoor recreation needs of an increasingly crowded community.

Rudolph A. Travers
President



An 1860s farmyard scene at Van Saun County Park includes replicas of old Bergen structures.

County Parks Enter Era Of Bold Expansion



At the opening of the small-boat launching installation in North Arlington, amphibious cars are the first craft down the ramp.

With the move to acquire the 3-lake Darlington Country Club property in Mahwah and Ramsey, groundwork for a golf course in Overpeck County Park, and excavation of a lake in Glen Rock, 1964 was a year of growth and promise for the Bergen County park system.

Construction was completed on three major projects, a 9-hole addition to the Rockleigh Bergen County Golf Course, a small-boat launching installation in North Arlington, and a recreated farmyard of the 1860s. Replicas of typical Bergen farm buildings were erected in the farmyard, at Van Saun County Park.

Three Million Visits

A new attendance record was set by the 1964 total of approximately 3 million visits to the County parks.

Two of the lakes at the 178.26-acre site of Darlington County Park are equipped for swimming and diving, and the third lake is used for fishing and boating. Assets at the site include a large clubhouse with restaurant and snack bar, day camp, pavilion with snack bar, locker rooms, picnic groves, children's playground, and facilities for tennis, handball, volley ball, shuffleboard, softball, horseshoe pitching, and ping pong.

There is room for additional park and recreation facilities, including the possibility of an 18-hole golf course.

Beaches at Darlington

The property, in the foothills of the Ramapo Mountains, has meadows, sand beaches, and woodland groves. There are

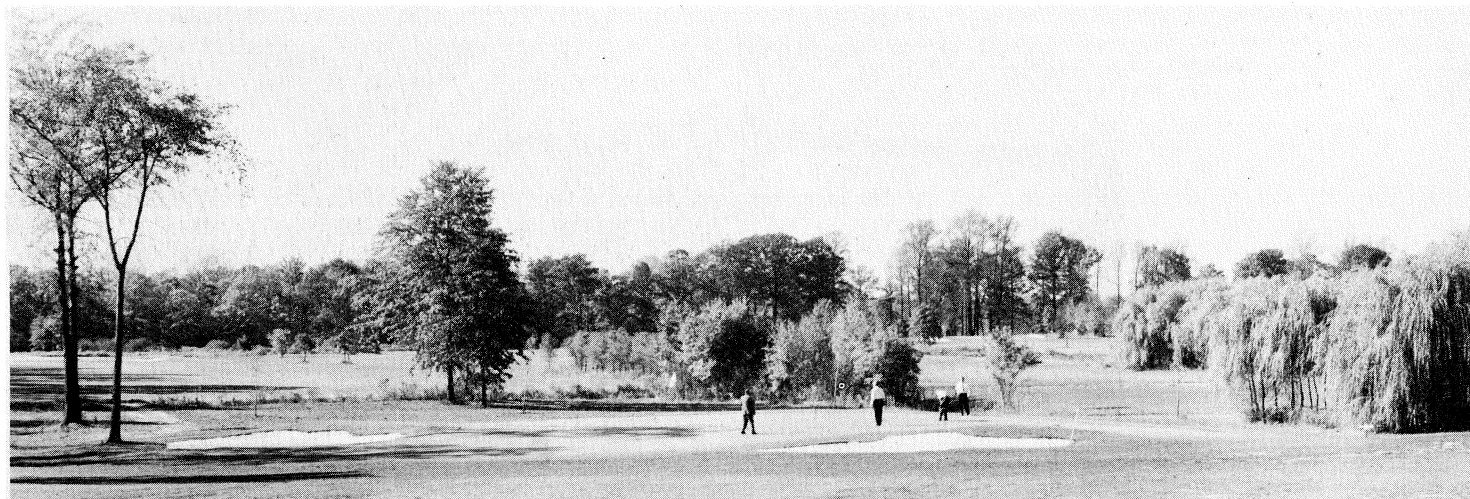
large parking areas and approximately 3 miles of road.

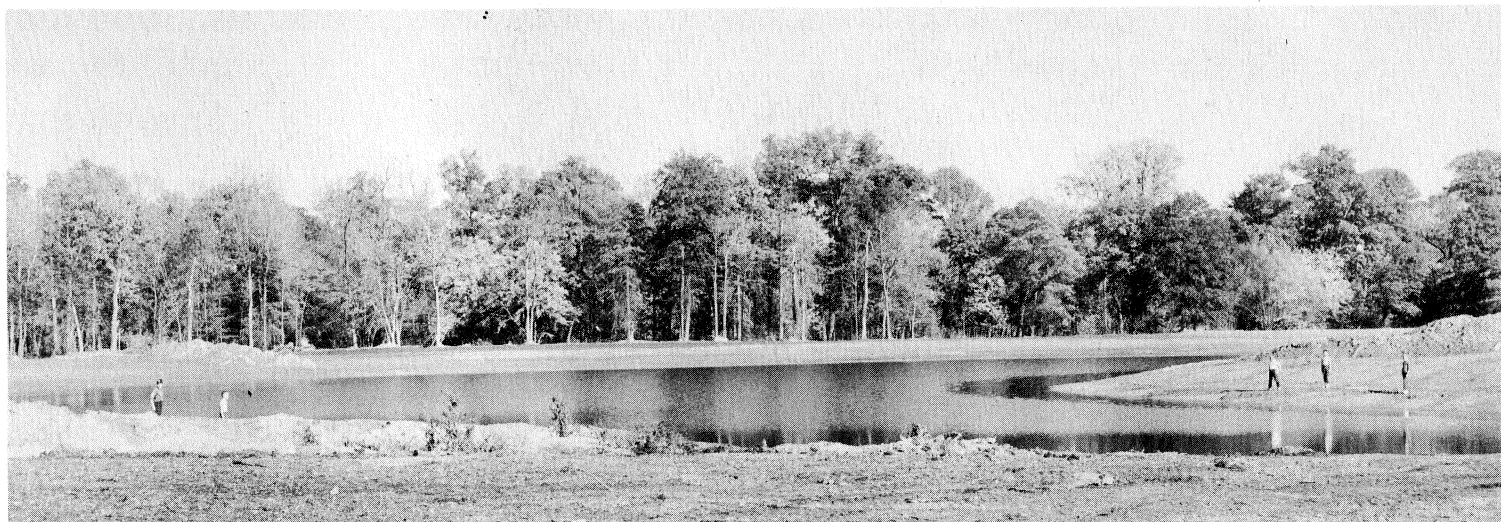
Preliminary approval has been given for a State Green Acres Program grant covering half the \$1,150,000 purchase price. The property was appraised at \$1,542,710 and \$1,460,000.

November 12's purchase agreement for the Darlington site was the culmination of nearly 3 years of Park Commission study and negotiation.

The dispute with the State over title to the Overpeck County Park site was settled in November. Under the terms of the legal agreement, the County has firm title to almost 800 acres of parkland and the State will construct a bridge to connect the two main sections of the park split by Route 80.

A 9-hole addition enables the Rockleigh Bergen County Golf Course to accommodate many more players on busy days.





A lake is excavated at the Glen Rock site of a County park scheduled to open in autumn 1965.

Overpeck Site Work

Though the agreement came too late for planned construction work, the County Park Commission did establish a 60,000-yard topsoil stockpiling project for the 18-hole golf course to be constructed on the Teaneck portion of the park site. The stockpiling project utilizes virgin meadow topsoil, which is being fortified. Clean fill is going into ditches created when the strips of meadow soil were removed for stockpiling.

Excavation of a 4-acre lake, land fill, drainage work, grading, and construction of a maintenance building were 1964 projects at the 30-acre Glen Rock park site. The park, scheduled to open in the fall of 1965, will include picnic facilities, two shelters, and an ice skating area.

Golf Course Enlarged

With the new 9-hole addition, the Rockleigh Bergen County Golf Course has 27 holes, enabling the facility to accommodate many more players on busy days and permitting a full 18-hole round even when nine holes are closed off for maintenance purposes.

Three pedestrian bridges were built in 1964 at the golf course, a sod nursery was started, parking space was added, a 1,500-foot fence was erected, and an equipment shed was constructed.

Projects at Riverside County Park South in North Arlington included the paving of a play court to be flooded for skating in winter and available for tennis the rest of the year and the addition of a new hardball field and new bleachers, as well as completion of the small-boat launching installation.

Boat Ramp Opened

Spring 1964 additions to the launching installation were a pedestrian ramp and float, parking area for the use of boat owners, and a 300-foot park-drive spur leading to the ramp. The installation opened May 29.

The Park Commission initiated a campaign for a cleaner Passaic River, to the end that the river will have more recreational value.

In a move to add interest to the chil-

dren's railroad ride and to gain office space needed at Van Saun County Park, the Park Commission erected authentic replicas of farm buildings typical of those found in Bergen County 100 years ago.

The farmhouse contains a park office, a Bergen County Police substation, and a first aid room. The barn serves as winter quarters for several species from the nearby children's zoo. A smokehouse replica houses the heating plant.

Antiques Assembled

Antique implements and vehicles have been assembled and restored for display in the 4-bay carriage shed.

Flower, vegetable, and herb gardens will be part of the farmyard scene on the right of way of the children's railroad with its replica of an 1866 locomotive.

Panel paintings depicting miners at



Virgin meadow topsoil is stockpiled in ridges 15 feet high for the golf course to be built in Overpeck County Park.



A model sailboat regatta enlivens the scene at Saddle Brook County Park.

work were installed in the railroad tunnel to give the effect of a Nineteenth Century iron mine interior. Rough-hewn timbers and the facade of a mine office add to the illusion.

Park Commission crews cleared, graded, landscaped, and fenced the site of the famed pre-Revolutionary red mill in what is now Arcola.

Financing Mastodon Exhibit

Other 1964 action in the interest of history included an agreement for the Park Commission to finance a \$7,500 exhibit featuring mastodon bones unearthed during 1962 in Hackensack. Preparation of the exhibit is to be undertaken by the American Museum of

Natural History in co-operation with the Bergen Community Museum.

Erection of a \$3,200 practice backstop at the tennis center in Van Saun Park and extensive renovation of the ball field in the Palisades Park section of Overpeck Park were among 1964 Park Commission projects expanding recreation facilities. A pedestrian bridge spanning the inlet stream was built at Dahnert's Lake County Park to afford access to grassy slopes upstream of the lake.

Free Tennis Tips, Concerts

The Commission offered free vacation tennis clinics for school children and, in co-operation with A. F. L. Musicians Local 248, sponsored six free Sunday band

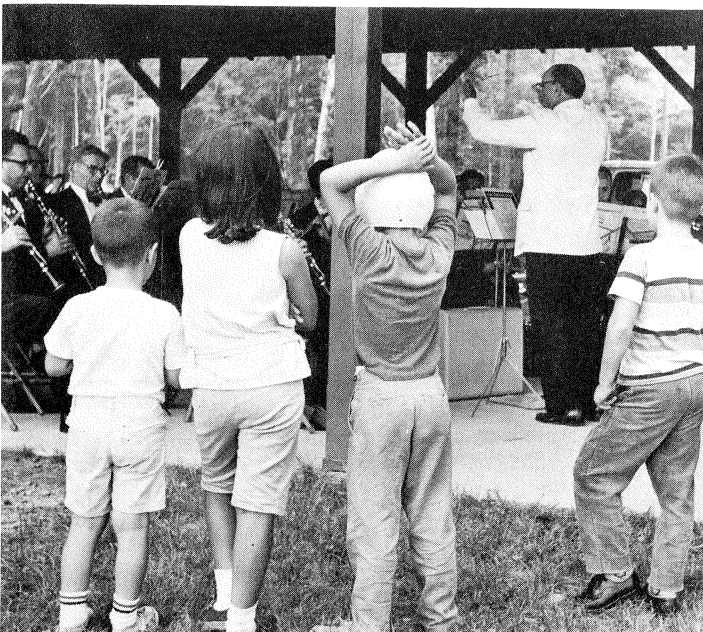
concerts in five County parks. The annual tennis tournament had 98 singles entrants and 63 doubles teams.

Santa Claus was the engineer when the children's railroad offered free rides the Saturday before Christmas.

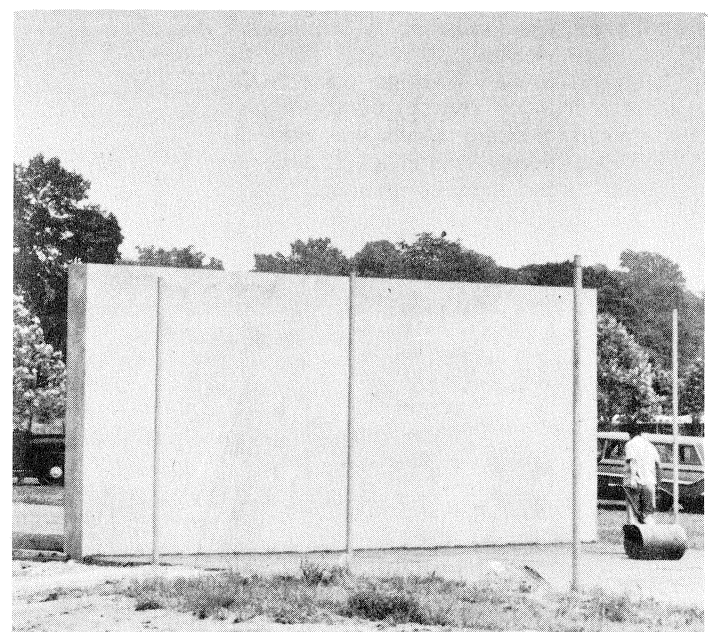
Construction in 1964 included extension of park drives at Campgaw Mountain County Reservation and Dunkerhook County Park. The 2,600-foot Campgaw extension, part of a long-range project to carry the drive through the Reservation, provided easier access to the camping area and made it possible for fire engines and other emergency equipment to penetrate the Reservation.

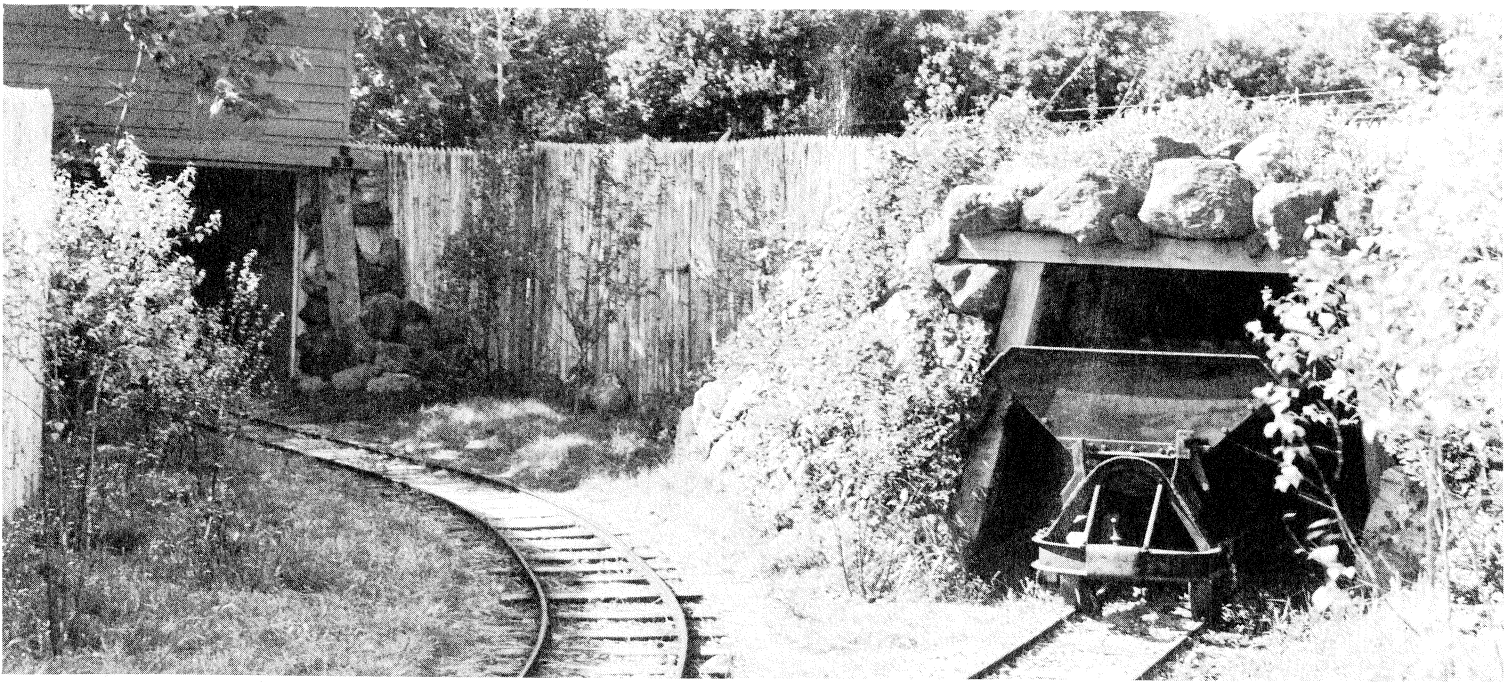
The Record Photo

Children stand rapt at one of six free Sunday band concerts in County parks.



A practice backstop is erected at the tennis center in Van Saun County Park.





The children's railroad tunnel takes on the look of a 19th Century iron mine. Inside, there are paintings of miners at work.

Picnic Area Extended

Dunkerhook Park's 2,500-foot road spur and new parking area made picnicking possible in the northern part of the park site. Picnic tables and raised grills were added.

Mounting requests for group picnic permits necessitated new regulations designed to leave more room for family picnics in the 11 County parks with tables and outdoor grills. Organization outings were restricted on Sundays and holidays between May 1 and October 1.

Some idea of what goes into operation of a County park network can be had from the Park Commission's 1964 totals. The Commission spent \$7,865 on recreation equipment and \$60,425 on new maintenance and field equipment. Other additions in the parks included 83 park benches, 73 picnic tables, 140 fireplaces, 387 litter baskets, and 11 flag poles.

Bench swings, portable tennis and volleyball nets, basketball sets, swings, seesaws, and slides were among recreation items purchased.

364 Trees Planted

Landscaping crews seeded 41 acres and planted 364 trees, 361 shrubs, 10,724 annuals, 8,524 bulbs, and 2,330 perennials. Projects included filling, grading, and seeding in the northern section of Dahner's Lake County Park and grading, seeding, and fencing of Overpeck County Park lands along Fort Lee Road.

During the year the Commission issued 2,081 permits. A good number went to picnic groups of 10 or more persons. Other major reservations categories were ball fields and camping sites.



For the Santa Claus Special the train comes out of winter storage.

The children's railroad in Van Saun Park attracted 191,714 fares during the 1964 season. Golf course rounds totaled 66,909, and 12,217 hours of play were recorded at the tennis center.

Winter Sports Planned

The 1965-70 capital budget projection was announced in December. Major projects will include a County ski center in Northwest Bergen and an artificial-ice

rink in the Passaic River area, the announcement revealed. Capital funds are also budgeted for acquisition of the Darlington Country Club property and for development of the Overpeck County Park site.

Plans were drawn late in the year for an arboretum and horticultural center on a County park site in Wyckoff.

A brochure guide to the parks was revised and distributed.

Your County

Belmont Hill County Park Garfield

Rose garden, scenic lookout, children's play equipment, picnic tables, parking.

Campgaw Mountain County Reservation Mahwah, Franklin Lakes, Oakland

Nature trails, wild life sanctuary, overnight camping sites, tent platforms and adirondack shelters, picnic tables and fireplaces, children's play equipment, ranger service, parking.

Dahner's Lake County Park Garfield

Pond, ice skating, duck feeding, fishing, model-boat sailing, picnic tables and fireplaces, children's play equipment, parking.

*Darlington County Park Mahwah and Ramsey

Three lakes, two for swimming and one for fishing and boating. Clubhouse with restaurant and snack bar, terraces. Locker rooms, pavilion, comfort stations, children's playground, picnic tables and fireplaces. Day camp. Facilities for tennis, handball, volleyball, softball, shuffleboard, basketball, ping-pong, horseshoe pitching, and parking.

Entrance fee May 30 - Labor Day.

Overpeck County Park

Leonia Area

Baseball, picnic tables and fireplaces, ice skating, basketball sets at rink, portable volleyball net, parking.

Palisades Park Area

Baseball, ice skating.

Teaneck Area

Baseball, golf course under construction, parking.

Pascack Brook County Park Westwood and River Vale

Baseball, softball, football, bleachers and benches, parking.

Riverside County Park

North Area, Lyndhurst

Picnic tables and fireplaces, shelter, baseball and softball, ice skating, basketball sets and portable volleyball net at rink, shuffleboard courts, horseshoe pits, children's playground, refreshment center, comfort station, parking.

South Area, North Arlington and Lyndhurst

Small-boat launching installation, ice skating, portable tennis nets at rink, baseball, softball, horseshoe pits, picnic tables and fireplaces, children's playground, model railroad tracks, football, comfort station, parking.

Rockleigh Bergen County Golf Course Rockleigh, Northvale, Norwood

Twenty-seven holes. Clubhouse with snack bar, pro shop, terrace, shelters, parking.

Saddle River County Park

Dunkerhook Area

Picnic tables and fireplaces, two picnic shelters, duck feeding, children's play equipment, horseshoe pits, parking.

Glen Rock Area

Lake, duck feeding, fishing, model-boat sailing, picnic tables and fireplaces, two shelters, children's play equipment, ice skating, parking. AREA TO OPEN IN FALL OF 1965.

Rochelle Park Area

Ice skating, basketball sets and volleyball net at rink, picnic tables and fireplaces, parking.

Saddle Brook Area

Lake, duck feeding, fishing, model-boat sailing, baseball, football, children's playground, ice skating, picnic tables and fireplaces, shelter, horseshoe courts, comfort station, pedestrian entrance, parking.

Wild Duck Pond Area.

Pond, ice skating, duck feeding, model-boat sailing, fishing, picnic tables and fireplaces, shelter, shuffleboard, horseshoe pits, children's playground, patio for skaters, recreation room, comfort station, parking.

Van Saun County Park Paramus and River Edge

Children's zoo and playground, children's railroad, reconstructed 1860s farm scene, 12 tennis courts and pro shop, picnic tables and fireplaces, three picnic shelters, shaded garden around historic Washington Spring, pony rides, bridge trails, exhibition horseshow paddock, horses for hire, riding lessons available, duck feeding, shuffleboard, horseshoe pits, lake, model-boat sailing, fishing, ice skating, sledding slopes, ball fields, open play area, comfort stations, refreshment center, parking.

Wallington County Park Wallington

Pond, ice skating, fishing, model-boat sailing, sledding slopes, baseball, football, picnic tables and fireplaces.

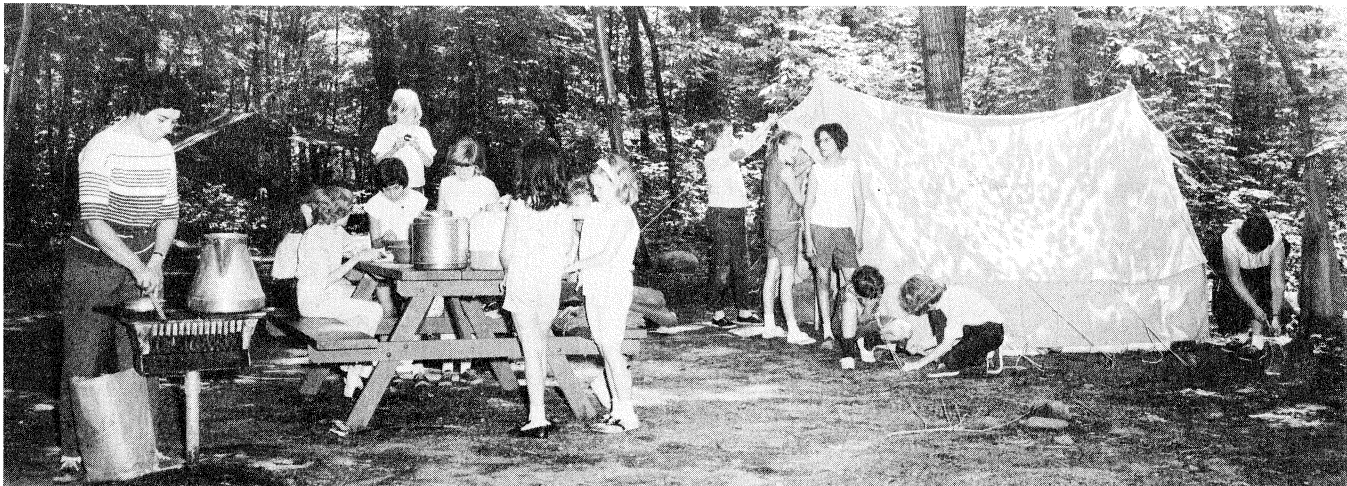
Wood Dale County Park

Woodcliff Lake, Hillsdale, Park Ridge
Lake, duck feeding station, fishing, model-boat sailing, picnic tables and fireplaces, ice skating, picnic shelter, children's play equipment, parking.

*Title transfer due in early 1965.



Golf is becoming a family sport.

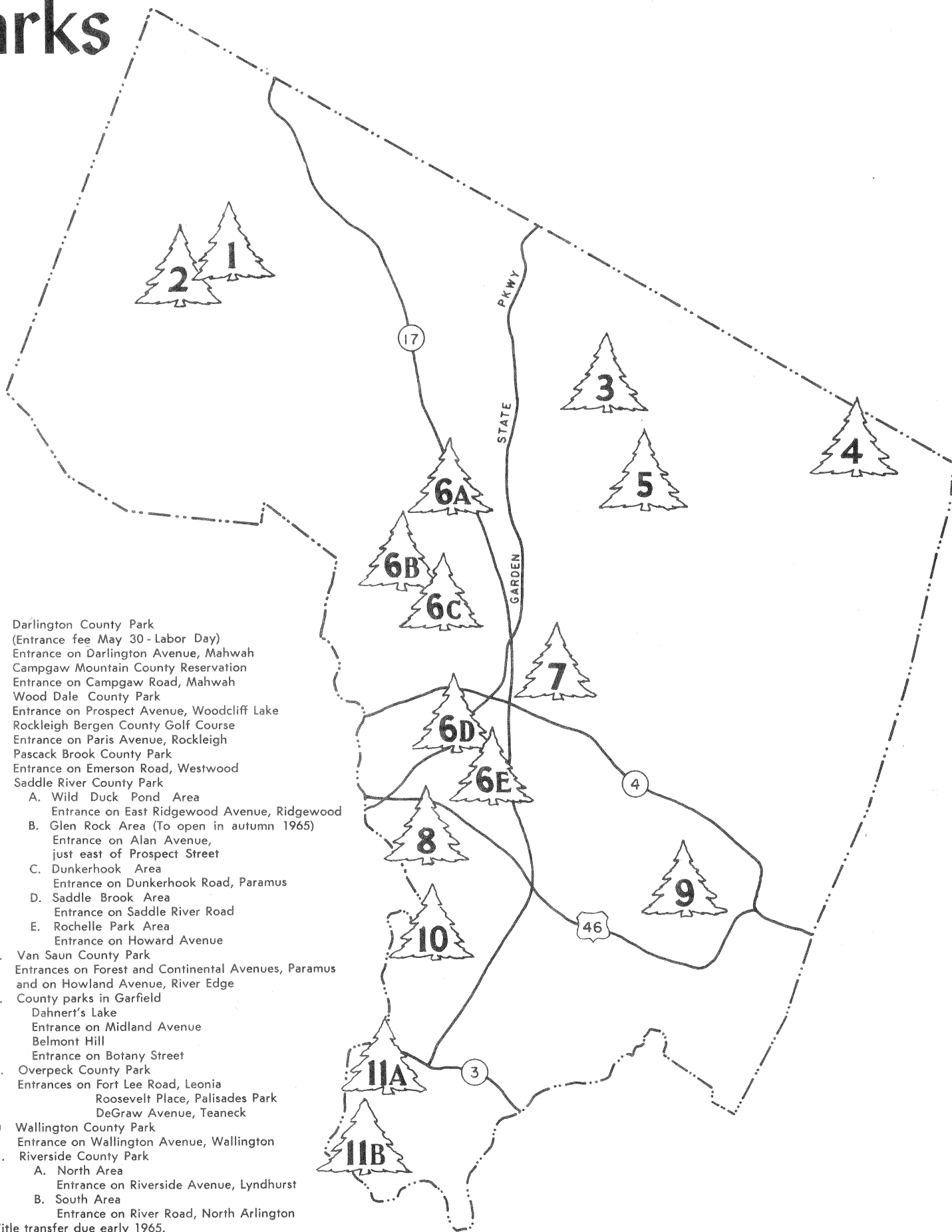


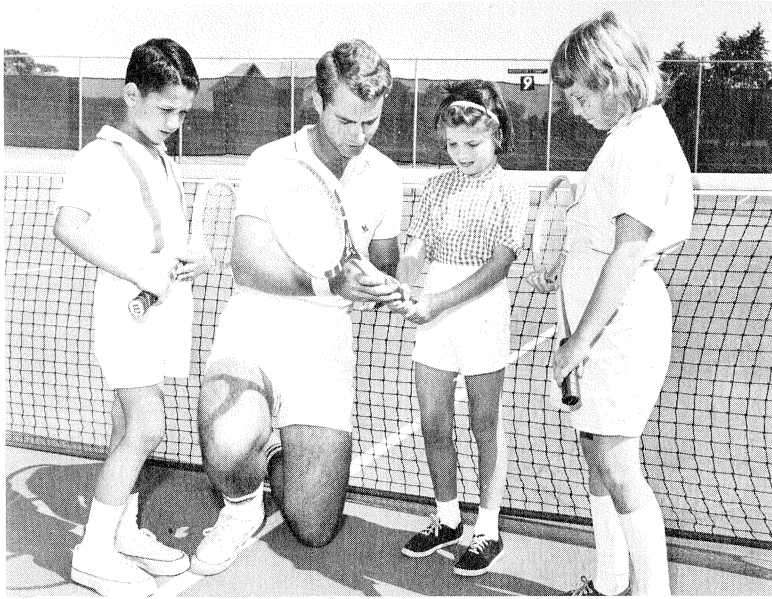
A camping site at Campgaw Mountain County Reservation is the scene of brisk activity.

Parks

- *1. Darlington County Park
(Entrance fee May 30 - Labor Day)
Entrance on Darlington Avenue, Mahwah
2. Campgaw Mountain County Reservation
Entrance on Campgaw Road, Mahwah
3. Wood Dale County Park
Entrance on Prospect Avenue, Woodcliff Lake
4. Rockleigh Bergen County Golf Course
Entrance on Paris Avenue, Rockleigh
5. Pascack Brook County Park
Entrance on Emerson Road, Westwood
6. Saddle River County Park
 - A. Wild Duck Pond Area
Entrance on East Ridgewood Avenue, Ridgewood
 - B. Glen Rock Area (To open in autumn 1965)
Entrance on Alan Avenue,
just east of Prospect Street
 - C. Dunkerhook Area
Entrance on Dunkerhook Road, Paramus
 - D. Saddle Brook Area
Entrance on Saddle River Road
 - E. Rochelle Park Area
Entrance on Howard Avenue
7. Van Saun County Park
Entrances on Forest and Continental Avenues, Paramus
and on Howland Avenue, River Edge
8. County parks in Garfield
 - Dahnert's Lake
Entrance on Midland Avenue
 - Belmont Hill
Entrance on Botany Street
9. Overpeck County Park
Entrances on Fort Lee Road, Leonia
Roosevelt Place, Palisades Park
DeGraw Avenue, Teaneck
10. Wallington County Park
Entrance on Wallington Avenue, Wallington
11. Riverside County Park
 - A. North Area
Entrance on Riverside Avenue, Lyndhurst
 - B. South Area
Entrance on River Road, North Arlington

*Title transfer due early 1965.

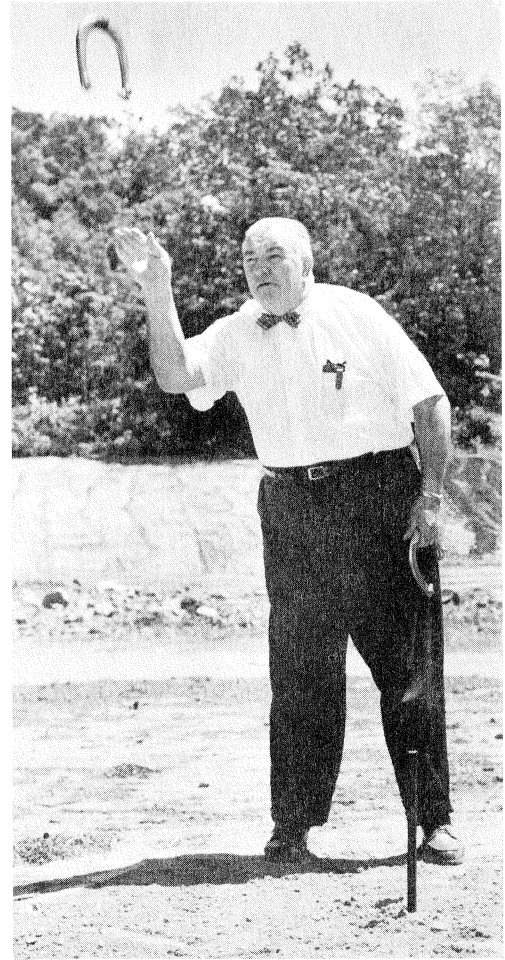




Tennis instruction is free for school children at summer vacation clinics.



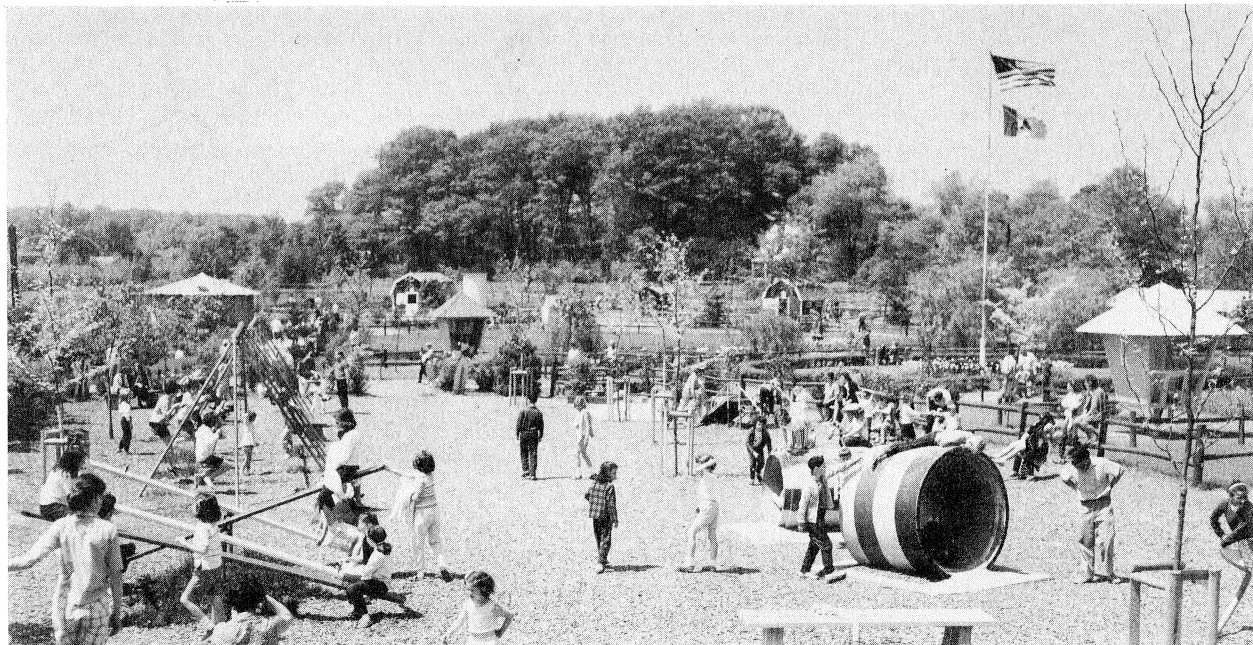
Sledding is popular in season at Van Saun and Wallington County Parks.



Horseshoe pitching keeps a man limber.

Activities For All Ages

There's plenty to do at the Van Saun County Park playground, adjacent to the children's zoo.



Bergen County Park Commission
CONDENSED STATEMENT OF PROPERTIES COMMITTED OR ACQUIRED FOR PARK PURPOSES
Combined Bond and Budget Accounts

Close of December 31, 1964

AREAS	SUB-TOTALS		TOTALS	
	Acreage	Cost	Acreage	Cost
OVERPECK CREEK				
Private Properties Purchased	123.62	\$ 180,874.00		
Municipal Properties Donated	882.88	—0—		
			(#) 1,006.50	\$ 180,874.00
PASSAIC RIVER				
Private Properties Purchased	49.93	121,321.00		
Municipal Properties Donated	78.71	—0—		
Municipal Properties Committed	2.35	—0—		
			130.99	121,321.00
SADDLE RIVER				
Private Properties Purchased	497.58	600,955.00		
Private Properties Donated	8.77	1.00		
Municipal Properties Donated	59.14	3,000.00		
Municipal Properties Committed	0.29	—0—		
			565.78	603,956.00
SOUTHWEST BERGEN				
Private Properties Purchased	(Z) —0—	2,200.00		
Municipal Properties Donated	18.53	2.00		
			18.53	2,202.00
VAN SAUN				
Private Properties Purchased or Committed	138.09	194,561.73		
Private Properties Donated	1.25	—0—		
			139.34	194,561.73
NORTHWEST BERGEN				
Private Properties Purchased	1,282.93	1,035,313.71		
Municipal Properties Donated	2.33	—0—		
			1,285.26	1,035,313.71
NORTHEAST BERGEN				
Private Properties Purchased	438.00	1,097,806.75		
Private Properties Donated	14.16	—0—		
Municipal Properties Donated	0.32	—0—		
			452.48	1,097,806.75
PASCACK BROOK				
Private Properties Purchased	24.67	53,321.88		
Municipal Properties Donated	110.00	—0—		
			134.67	53,321.88
PASCACK VALLEY				
Private Properties Purchased	109.98	232,869.00		
Municipal Properties Donated	6.69	—0—		
			116.67	232,869.00
HACKENSACK RIVER				
Private Properties Purchased			0.08	10.00
			<u>3,850.30</u>	<u>\$3,522,236.07</u>

NOTE: (#) Approximately 170 acres of park lands in the Overpeck Creek area are being taken by the State of New Jersey for the Bergen-Passaic Expressway. The exact acreage will be deducted after the State definitely establishes the line of take.
(Z) The 0.12 acres originally purchased for \$2,200.00 was sold at Public Sale for \$8,100.00 and proceeds credited to Capital Funds Surplus Account.

SUMMARY
SOURCE OF APPROPRIATIONS and EXPENDITURES

Description	Acreage	Disbursements	Receipts
RECEIPTS			
Park Commission Bond Funds			\$3,054,479.56
Park Commission Budget Funds			83,362.11
New Jersey Green Acres Assistance Program			685,000.00
DISBURSEMENTS			
Private Property Committed or Acquired	**2,664.88	\$3,519,233.07	
Private Property Donated	24.18	1.00	
Municipal Property Donated	1,161.24	3,002.00	
	3,850.30	\$3,522,236.07	
TRANSFERS TO CAPITAL FUNDS SURPLUS			
Re: Green Acres Assistance Program		155,000.00	
Re: Park Commission Bond Funds		145,605.60	
	<u>3,850.30</u>	<u>\$3,822,841.67</u>	<u>\$3,822,841.67</u>

**The above total of private properties purchased or committed comprising 2,664.88 acres at a cost of \$3,519,233.07 averages \$1,320.59 per acre.

Bergen County Park Commission

LAND ACQUISITION PROPERTIES COMMITTED OR ACQUIRED

Bond and Budget Accounts

Close of December 31, 1964

Description	SUB-TOTALS		TOTALS	
	Acres	Cost	Acres	Cost
Private Properties Committed or Acquired				
Reported close of December 31, 1963.....	2,687.25	\$3,500,884.07		
Adjustments Year 1964.....	— 2.17	— 0—		
			2,685.08	\$3,500,884.07
Private Properties Committed or Acquired in 1964				
Six (6) Parcels of Land were committed or acquired in two (2) areas			3.98	18,350.00
Municipal Properties Committed or Acquired				
Reported close of December 31, 1963.....	1,234.12	3,002.00		
Returned, Exchanged or Adjusted 1964.....	— 72.88	— 0—		
			1,161.24	3,002.00
Municipal Properties Committed or Acquired 1964				
None			— 0—	— 0—
			<u>3,850.30</u>	<u>\$3,522,236.07</u>

AUDITOR'S REPORT

February 11, 1965

Bergen County Park Commission
Administrative Building
Hackensack, New Jersey

Gentlemen:

I have examined the financial records of the Commission for the year ending December 31, 1964 and, as a result of this examination, I submit the following:

BUDGET FUNDS

Surplus, January 1, 1964	\$ 52,106.25
Plus: Cancellation of Prior Years' Commitments.....	12,239.28
Adjusted Surplus, January 1, 1964.....	\$ 64,345.53
Budget Appropriations — 1964.....	1,430,463.00
	<u>\$1,494,808.53</u>
Expenditures:	
Salaries and Wages.....	\$ 770,174.81
Office Operating Expenses	38,930.01
Engineering and Drafting.....	4,944.69
Land Acquisition	9,763.47
Field Operating Expense.....	27,121.92
New Field Equipment.....	55,670.34
Maintenance Materials	345,975.05
	<u>\$1,252,580.29</u>
Budget Appropriation Reserves.....	112,882.71
	<u>1,365,463.00</u>
Surplus, December 31, 1964.....	<u>\$ 129,345.53</u>

BOND ISSUES

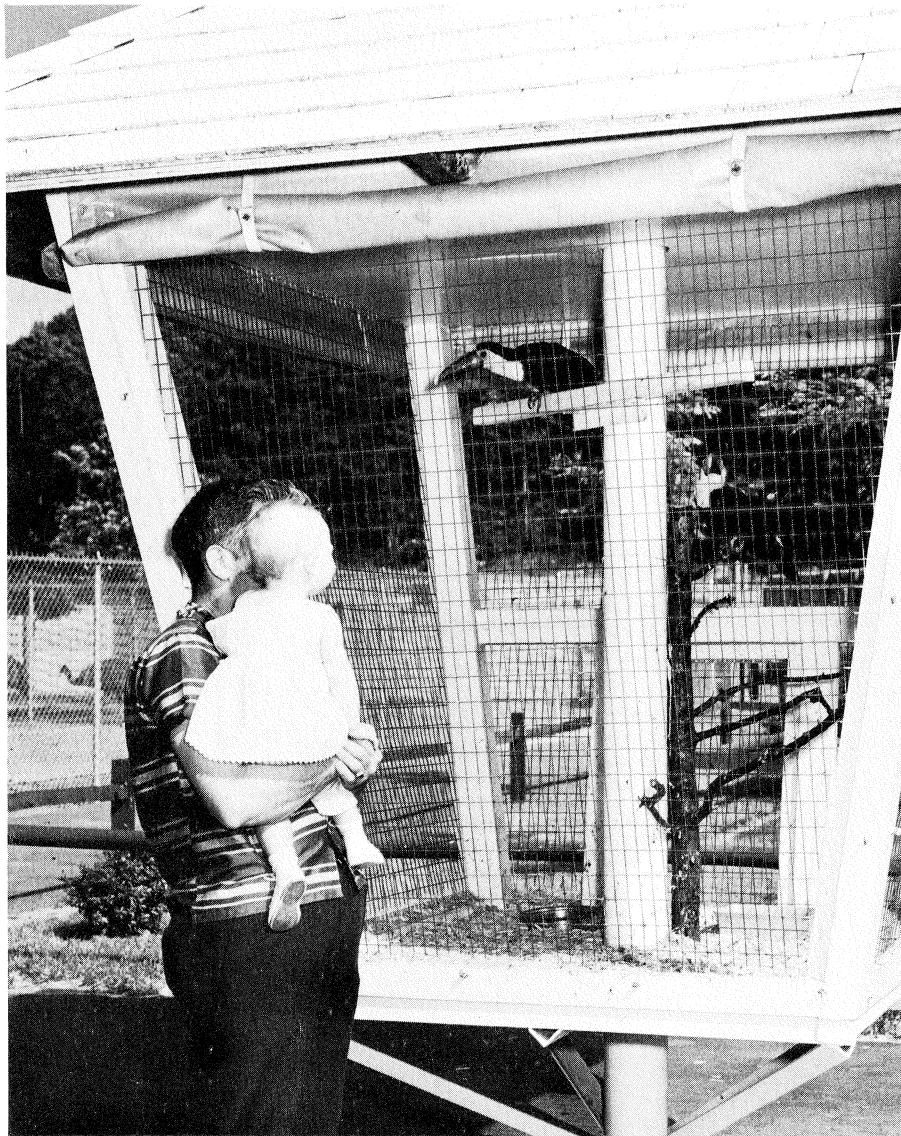
Balance Available, January 1, 1964.....	\$ 126,584.23
Capital Improvements — 1964 County Budget.....	156,000.00
	<u>\$ 282,584.23</u>
Less: Disbursed and Committed for Land Acquisitions and Improvements.....	191,062.86
Balance Available, December 31, 1964.....	<u>\$ 91,521.37</u>

All vouchers were examined and found to be properly approved. Checks issued in payment of these vouchers were compared with both the voucher and the entry in the financial records. These were found to be correct.

Cash in banks was reconciled with book figures.

Respectfully submitted,

J. Edward Schierloh
Certified Public Accountant
(N. J. & N. Y.)





Bergen County Park Commission
Annual Report, 1964
