

Bergen County Park Commission

ANNUAL REPORT, 1963



BERGEN COUNTY PARK COMMISSION, 1963
HACKENSACK, NEW JERSEY

Rudolph A. Travers, President

Bernard H. Johnson, Vice President
Peter J. Russo, Assistant Secretary
Dr. George L. Kingslow
George M. Gillette, Jr.

William Staubach, Secretary
Harold M. Davison
Harold J. Hollenbeck
Otto C. Pehle

James A. McFaul, Executive Director

Herbert H. Handelsmann, Staff Director

George A. Duffy, Counsel

BOARD OF CHOSEN FREEHOLDERS, 1963

Cassius H. Daly, Jr., Director

Mrs. Bernice Alexander
Edmund E. Field, Jr.
Albert Moskin
Arthur W. Vervaeet
Anthony Pepe

Frank V. Jerlinski
Robert L. Olson
Alfred S. Walden, Chairman,
Parks Committee

William R. Smith, Executive Administrator

Milton T. Lasher, County Counsel*
Nelson G. Gross, County Counsel

Richard L. Nelson, Assistant Executive Administrator

* Resigned July 1, 1963



COVER PICTURE: The new train at Van Saun County Park passes the zoo barnyard, with steam rising from the miniature replica of an 1866 locomotive.



During 1963 the Bergen County Park Commission continued its all-out effort to keep pace with the County's need for ever-increasing outdoor recreation facilities.

No sooner have we opened new areas and added new features than they have attracted crowds. Wood Dale County Park's first section offers a case in point. This new facility had approximately 2,700 visitors in the two October weekends following its opening.

Our parks are oriented primarily to the family, because our visitors are generally family groups.

With the active support of the Bergen County Board of Freeholders, the 17-year-old Park Commission has made wholesome outdoor recreation available to residents of all ages. You may be sure the County park network will continue to expand in size and scope as it serves a growing, developing community.

Rudolph A. Travers
President





A park is a place to play.

Saun Park lakes. Other pavilions went to Dunkerhook County Park, Saddle Brook County Park, and Riverside County Park North. Windbreak siding was added to the new Van Saun Pavilion and to the Wood Dale duck-feeding station at the end of the year for the benefit of ice skaters. The new Wood Dale lake brings to 11 the number of lighted ice skating areas in the County park network.

Facilities for Campers

At Campgaw Mountain County Reservation five Adirondak shelters joined the one installed in 1962, and six tent platforms were constructed.

New baseball fields at Van Saun Park and at both the north and south areas of Riverside County Park brought to 16 the number of diamonds in the County park system.

Installations at the County parks during 1963 included playground equipment, steel bleachers, bicycle racks, basketball backstops, and volleyball nets.

Picnic tables and raised grills were added at Van Saun, Saddle Brook, and Wild Duck Pond Parks, at Campgaw Mountain Reservation, and both areas of Riverside Park. The County park system now has more than 1,000 picnic tables.

571 Trees Planted

Landscape planting in the County parks during 1963 included 571 trees, 640 shrubs, more than 6,000 bulbs—chiefly tulips—400 chrysanthemums, and 1,000 annuals.

At Campgaw Mountain Reservation, the Commission cleared 2,500 feet of woodland for extension of the park drive and prepared the clearing for a 1-acre parking area. At Dunkerhook Park, 2,700 feet of woodland were cleared for additional park drive, and also a clearing was made for a 1-acre parking area.

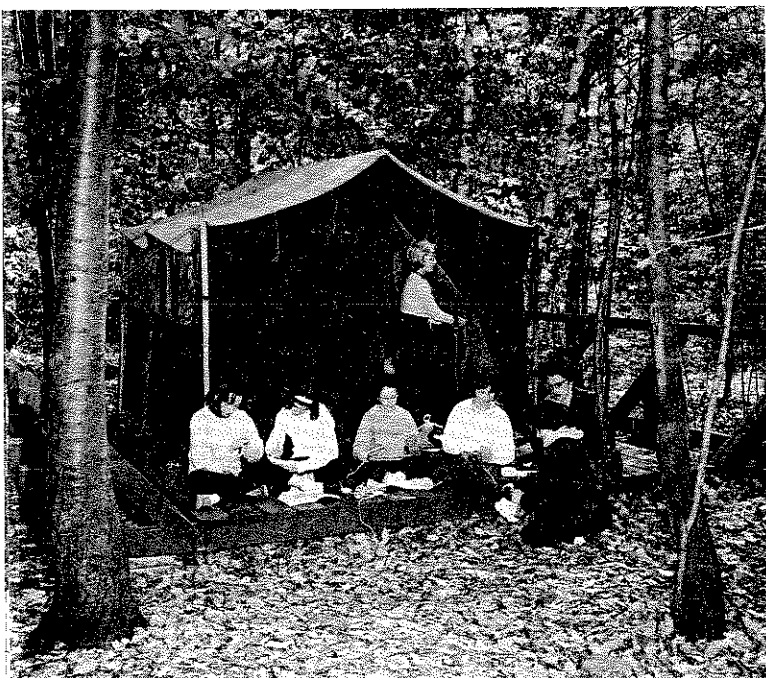
Acreage at the north end of Wild Duck Pond Park was prepared for picnic and open-play areas.

Green Acres Program Used

The Park Commission took title in 1963 to 97.45 acres in Alpine and obtained a State commitment for reimbursement of \$155,000. Two \$200,000 checks received in 1963 from the State Green Acres program reimbursed the County for half the purchase price of a 93-acre parcel in Alpine and an 81.35-acre property in Wyckoff. The Alpine properties are adjoining.

An 8-week survey of park use was made by the Commission in the spring and early summer of 1963. Of more than

Campers tent out on one of the six new platforms at Campgaw Mountain County Reservation.



Playground animals ride out the storm. New play equipment was added in several parks.

The Record Photo



21,000 cars checked during the survey, fewer than 1,000 bore out-of-State license plates.

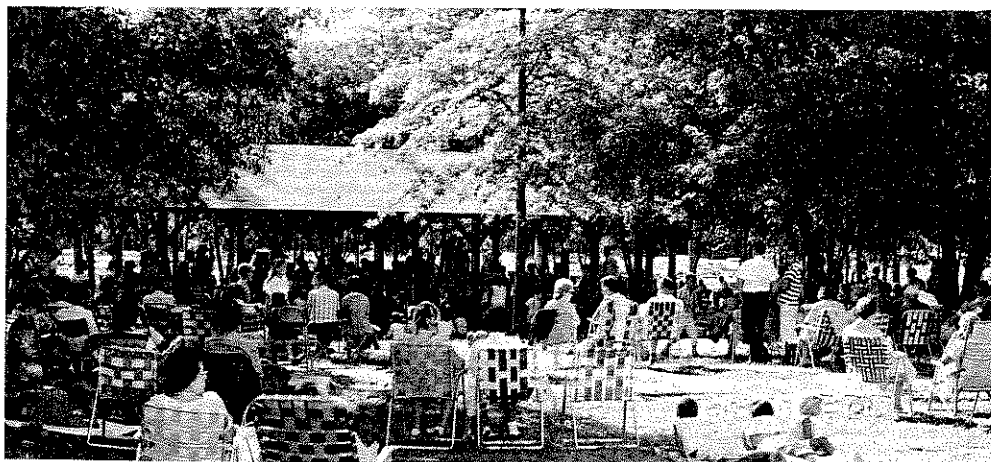
Attendance records fell at every turn during 1963. On a single July Sunday, an estimated 17,000 persons visited Van Saun Park. There were 1,900 skaters on the ice January 1 in Wild Duck Pond County Park. With 40 to 45 days of skating at most of the areas maintained by the Park Commission, winter 1963 produced attendance many times higher than any previous year's total.

Tennis Clinics Popular

Rounds played at the Rockleigh Bergen County Golf Course totaled 63,992, 18 per cent more than in 1962, the previous record year. Membership was up 15 per cent and gross revenue up 12½ per cent. At the tennis center in Van Saun Park, revenue exceeded by 16 per cent the previous high. The 1963 gross revenue totals were reported at \$159,097 for the golf course and \$7,331 for the tennis center.

Permits issued for groups of 10 or more and for the use of ball fields and camp sites totaled 1,799 for 1963. This figure is about 500 higher than last year's despite the fact that Campgaw Mountain Reservation was closed 5 weeks in 1963 because of drought conditions.

The tennis center in Van Saun Park provided free instruction throughout July and August at clinics for boys and girls under 18. Each group met once a week.



Listeners relax at one of two free band concerts in Van Saun County Park.

Attendance averaged 200 to 250 a session. The clinics were held four and five days a week.

Sunday Band Concerts

Free public band concerts were held August 4 and 18 at Van Saun Park. Music was provided by Local 248, American Federation of Musicians, under Park Commission auspices. Some 400 park visitors attended each concert.

A bus tour of the parks for representatives of golden age clubs was arranged by the Park Commission and the Bergen County Tuberculosis and Health Association. The 40 senior citizens on the May 1 tour expressed interest in

future use of the facilities, particularly the picnic areas and shuffleboard and horseshoe courts.

Young Cheryl Canner, of New Milford, won a contest for the naming of two fawns born July 4, at Van Saun Park. The names were Sparkle and Sprinkle.

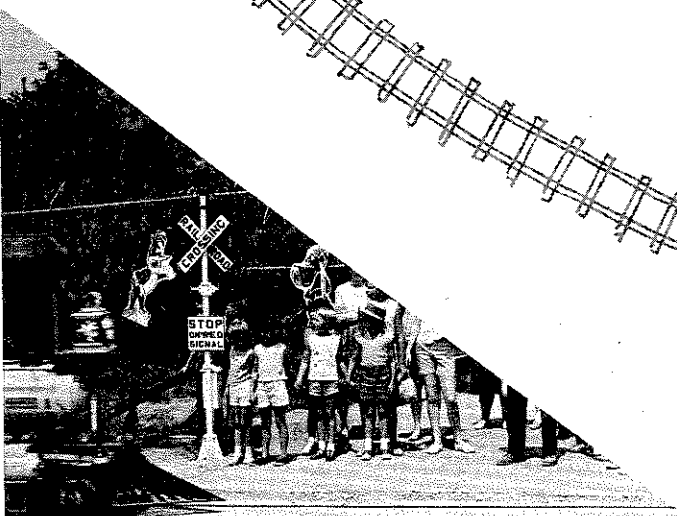
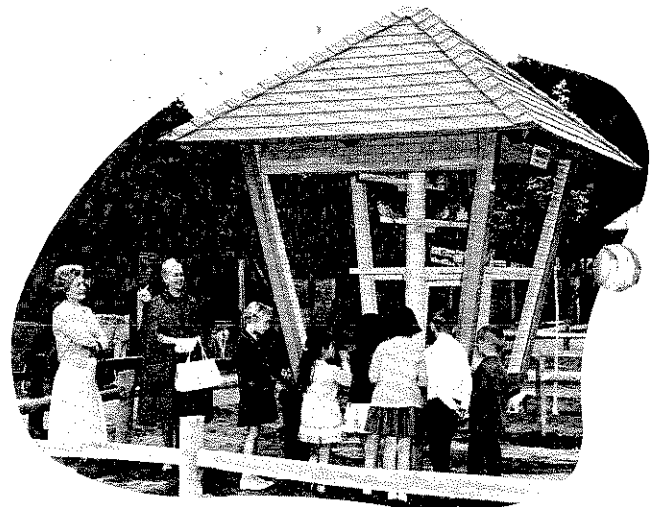
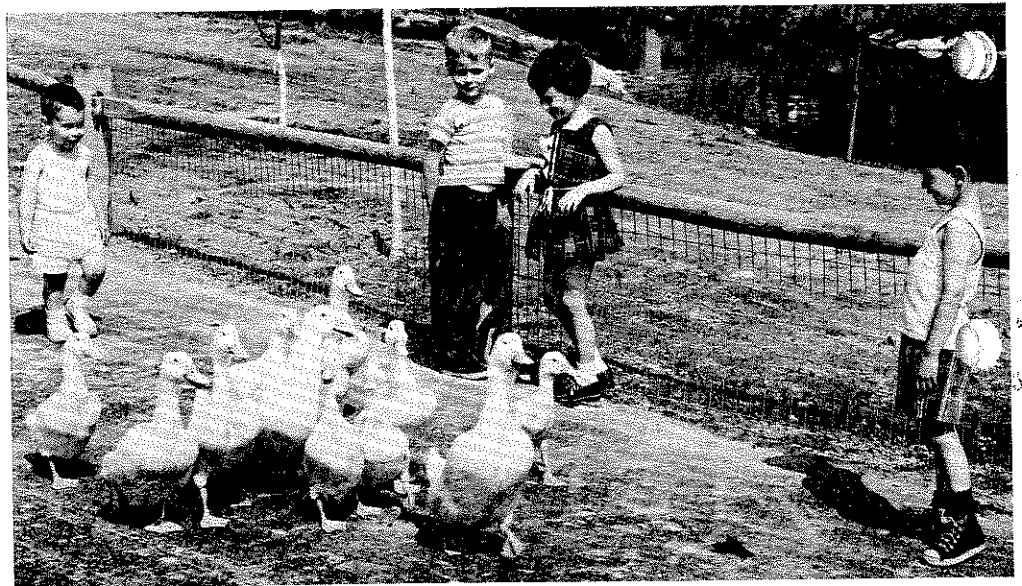
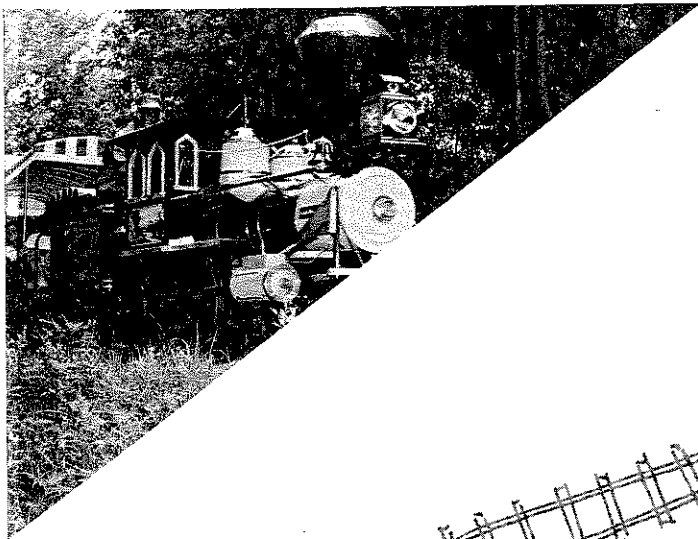
The County 4-H fair and a junior fishing education and conservation program were held at Wild Duck Pond County Park. A lawn-building demonstration and benefit horse show were among activities conducted at Van Saun Park.

Though there were special events in the parks, the great preponderance of visitors arrived as families on an outing.

Tenasty senior citizens enjoy a picnic at Wild Duck Pond County Park.

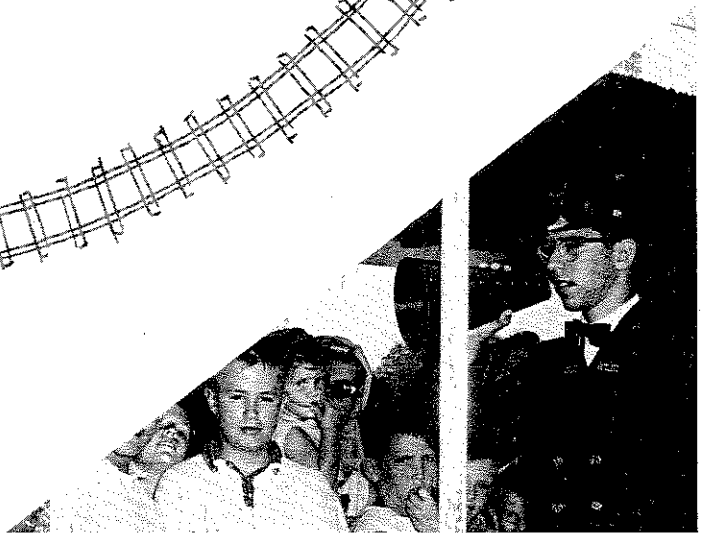
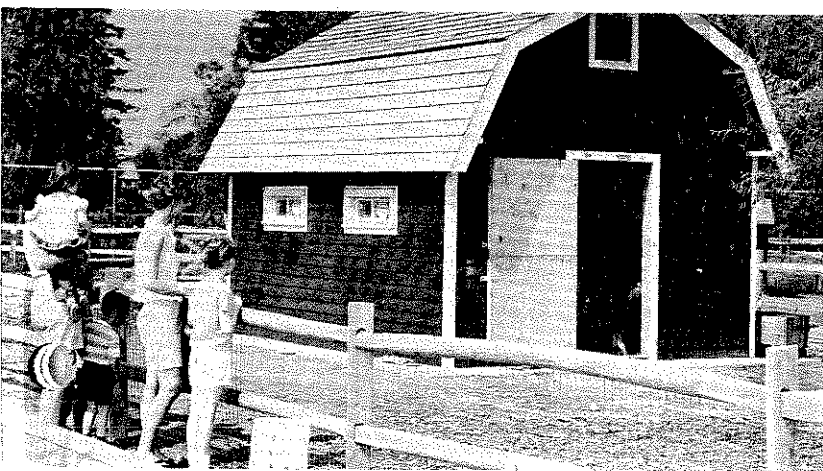
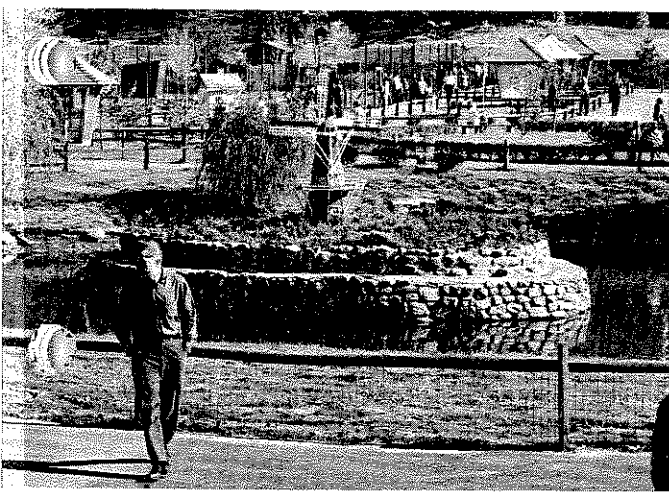
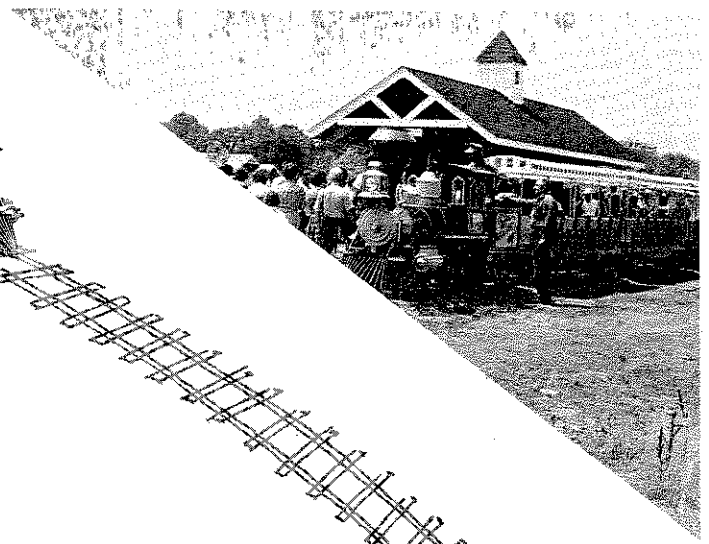
The Record Photo





✓

Though 1963 was a bad year for railroading in general, a new rail line opened and flourished in Van Saun County Park. Passengers get a good look at the barnyard added in 1963 as part of general zoo renovation. New bridges, cages, and landscaping were included in the renovation project.

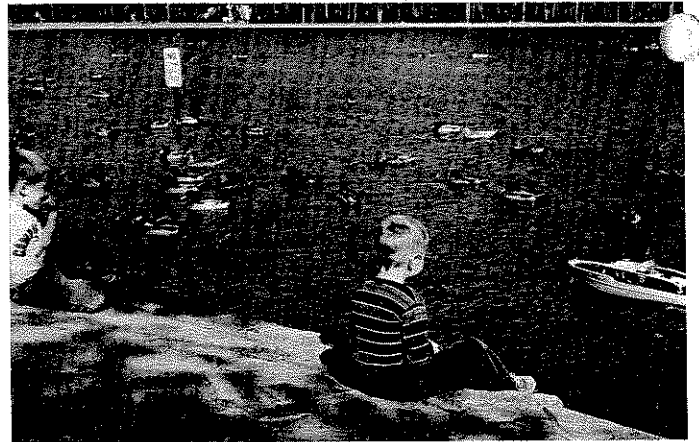




Only the ducks ruffle the serene waters of Van Saun County Park's new 6-acre lake.



"That's the way to the zoo, Ma'am." Bergen County Police help to maintain law and order in the parks.



Memories are made at parks, memories of a picnic under the trees, a model boat among the ducks—and of many other pleasant fresh-air scenes and activities.



BERGEN COUNTY PARK COMMISSION
CONDENSED STATEMENT OF PROPERTIES
COMMITTED OR ACQUIRED FOR PARK PURPOSES
BOND AND BUDGET ACCOUNTS

Close December 31, 1963

AREAS	SUB-TOTALS		TOTALS	
	ACREAGE	COST	ACREAGE	COST
OVERPECK CREEK				
Purchased or Committed	125.79	\$ 180,874.00		
Municipal Properties Donated	955.76	—0—		
			(#) 1,081.55	\$ 180,874.00
PASSAIC RIVER				
Purchased or Committed	49.93	121,321.00		
Municipal Properties Donated	78.71	—0—		
Municipal Properties Committed	2.35	—0—		
			130.99	121,321.00
SADDLE RIVER				
Purchased or Committed	495.26	582,606.00		
Municipal Properties Donated or Committed	59.43	3,000.00		
County Properties Committed	—0.58	—0—		
Private Properties Donated	8.77	—0—		
			562.88	585,606.00
UTHWEST BERGEN				
Purchased or Committed	(Z) —0—	2,200.00		
Municipal Properties Donated	18.53	2.00		
			18.53	2,202.00
VAN SAUN				
Purchased or Committed	138.09	194,561.73		
Private Properties Donated	1.25	—0—		
			139.34	194,561.73
NORTHWEST BERGEN				
Purchased or Committed	1,282.93	1,035,313.71		
Municipal Properties Donated	2.33	—0—		
			1,285.26	1,035,313.71
NORTHEAST BERGEN				
Purchased or Committed	438.00	1,097,806.75		
Municipal Properties Donated	0.32	—0—		
	13.08	—0—		
			451.40	1,097,806.75
PASCACK BROOK				
Purchased or Committed	24.67	53,321.88		
Municipal Properties Donated	110.00	—0—		
			134.67	53,321.88
PASCACK VALLEY				
Purchased or Committed	109.98	232,869.00		
Municipal Properties Donated	6.69	—0—		
			116.67	232,869.00
HACKENSACK RIVER				
Properties Purchased			0.08	10.00
			<u>3,921.37</u>	<u>\$3,503,886.07</u>

Note: (#) Approximately 190 acres of park lands in the Overpeck Creek area are being taken by the State of New Jersey for the Bergen-Passaic Expressway. The exact acreage will be deducted after the State definitely establishes the line of take.

Note: (Z) The 0.12 acres originally purchased for \$2,200.00 was sold at Public Sale for \$8,100.00 and proceeds credited to Capital Funds Surplus Account.

SUMMARY OF LAND ACQUISITION

	ACREAGE	COSTS
Private Properties Purchased or Committed	* 2,664.73	\$3,500,883.07
Private Properties Donated	23.10	1.00
Municipal Properties Acquired or Committed	1,234.12	3,002.00
County Owned Property Committed	—0.58	—0—
	<u>3,921.37</u>	<u>\$3,503,886.07</u>

ACTUAL SOURCE OF APPROPRIATED FUNDS

BERGEN COUNTY PARK COMMISSION BOND AND BUDGET ACCOUNTS	\$2,973,886.07
NEW JERSEY STATE GREEN ACRES ASSISTANCE PROGRAM	530,000.00
TOTAL	<u>\$3,503,886.07</u>

Note: * The above total of private properties purchased or committed comprising 2,664.73 acres at a cost of \$3,500,883.07 averages \$1,313.79 per acre.

BERGEN COUNTY PARK COMMISSION
LAND ACQUISITION PROPERTIES COMMITTED OR ACQUIRED
BOND AND BUDGET ACCOUNTS

Close December 31, 1963

DESCRIPTION	SUP-TOTALS		TOTALS	
	ACRES	COST	ACRES	COST
PRIVATE PROPERTIES COMMITTED OR ACQUIRED				
Reported close of December 31, 1962	2,587.76	\$3,152,484.07		
Adjustments 1963	-0.57	-500.00		
			2,587.19	*\$3,151,984.07
PRIVATE PROPERTIES COMMITTED OR ACQUIRED 1963				
Thirteen (13) parcels of land with appurtenances were committed or acquired in two (2) areas			**100.06	348,900.00
MUNICIPAL PROPERTIES COMMITTED OR ACQUIRED				
Reported close of December 31, 1962	1,234.85	3,002.00		
Adjustments 1963	-1.37	-0—		
			1,233.48	3,002.00
MUNICIPAL PROPERTIES COMMITTED OR ACQUIRED 1963				
Village of Ridgewood Sewer Disposal Plant property located in Glen Rock			0.64	-0—
RIPARIAN RIGHTS COMMITTED				
Reported close of December 31, 1962	-0—	45,311.19		
Commitment rescinded December 1963	-0—	-45,311.19		
			-0—	-0—
			3,921.37	\$3,503,886.00

Note: *The New Jersey State Green Acres Assistance Program has reimbursed the County of Bergen in the sum of \$530,000.00 for 50% of the cost of land included in this total.
 **The New Jersey State Green Acres Assistance Program has made tentative commitments of \$155,000.00 for 50% of the cost of lands totalling \$310,000.00 included in this total.

AUDITORS REPORT

February 10, 1964

Bergen County Park Commission
Administrative Building
Hackensack, New Jersey

Gentlemen:

I have examined the financial records of the Commission for the year ending December 31, 1963 and, as a result of this examination, I submit the following:

BUDGET FUNDS

SURPLUS, JANUARY 1, 1963	\$ 29,714.14
PLUS: CANCELLATION OF PRIOR YEARS' COMMITMENTS	22,392.11
ADJUSTED SURPLUS, JANUARY 1, 1963	\$ 52,106.25
BUDGET APPROPRIATIONS—1963	1,186,726.00
	<u>\$1,238,832.25</u>

EXPENDITURES:

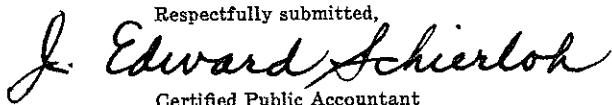
Salaries and Wages	\$700,384.50
Office Operating Expenses	32,178.96
Engineering and Drafting	12,594.94
Land Acquisition	4,187.77
Legal Expenses	8,184.50
Field Operating Expenses	22,783.13
New Field Equipment	50,250.31
Maintenance Materials	278,945.16
	<u>1,109,509.27</u>
	\$ 129,322.98
LESS: RESERVE APPROPRIATIONS—1963	77,216.41
SURPLUS, DECEMBER 31, 1963	<u>\$ 52,106.25</u>

BOND ISSUES

BALANCE AVAILABLE, JANUARY 1, 1963	\$ 241,840.48
COUNTY PARK BONDS AUTHORIZED—1963	498,000.00
	<u>\$ 739,840.48</u>
LESS: DISBURSED AND COMMITTED FOR LAND ACQUISITION AND IMPROVEMENTS	613,256.25
BALANCE AVAILABLE, DECEMBER 31, 1963	<u>\$ 126,584.23</u>

All vouchers were examined and found to be properly approved. Checks issued in payment of these vouchers were compared with both the voucher and the entry in the financial records. These were found to be correct.

Cash in banks was reconciled with the book figures.

Respectfully submitted,

 Certified Public Accountant
 (N. J. & N. Y.)





ANNUAL REPORT 1963
BERGEN COUNTY PARK COMMISSION
