



ANNUAL REPORT

FOR 1962

BERGEN COUNTY
PARK COMMISSION

BERGEN COUNTY PARK COMMISSION

1962

Harold J. Hollenbeck
President

Rudolph A. Travers, Vice President
Dr. George L. Kingslow, Assistant Secretary
Bernard H. Johnson
George M. Gillette, Jr.
James A. McFaul, Executive Director

William Staubach, Secretary
Harold M. Davison
Peter J. Russo
Otto C. Pehle
Herbert H. Handelsmann, Staff Director

George A. Duffy
Counsel

BOARD OF CHOSEN FREEHOLDERS

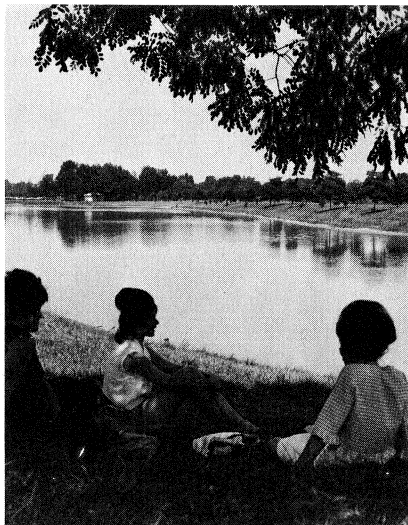
1962

Anthony Pepe
Director

Mrs. Bernice Alexander
Edmund E. Field, Jr.
Albert Moskin
Arthur W. Vervaet
William R. Smith, Executive Administrator

Cassius H. Daly, Jr.
Frank V. Jerlinski
Robert L. Olson
Alfred S. Walden
Milton T. Lasher, County Counsel

Richard L. Nelson
Assistant Executive Administrator



COVER PICTURE: As they sit in the shade and chat, three girls look across the lake at Saddle Brook County Park. Young flowering crab apple trees on the opposite bank are reflected in the water. The lake is actually a water-detention basin for the Saddle River.



The historic spring in Van Saun County Park is beautifully planted with azalea banks, tulip beds, a dogwood grove, and rhododendrons.

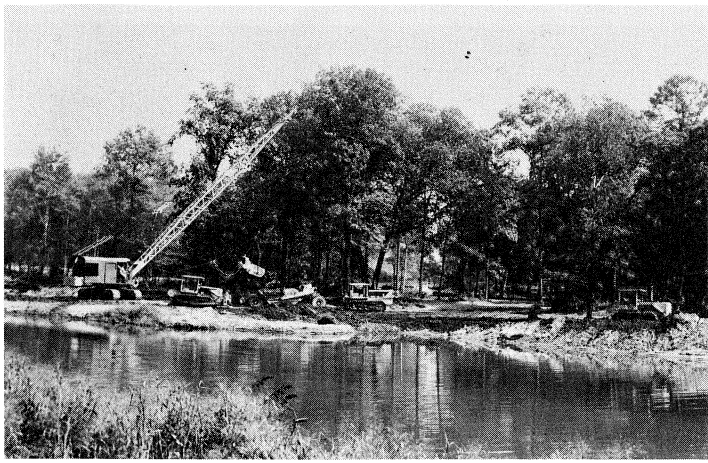
In 1962, a year of expansion for the Bergen County park system, use of the parks tripled, acreage increased, and recreation facilities were added to existing parks.

The 16-year-old Bergen County Park Commission plans continued growth and development of the County park network, to keep pace with the recreation needs of the increasing population.

Bergen residents can be proud of their parks, which offer a wide range of activities for the whole family.

The Park Commission is grateful that the Bergen County Board of Freeholders recognizes the importance of wholesome outdoor recreation and actively supports park development for today's residents and future generations.

Harold J. Hollenbeck
President



Excavation of the 6-acre lake in Van Saun County Park was completed in 1962. Soil dredged from the lake bed was used as fill on the surrounding lowland areas.

A record 2½-million attendance total, the first matching funds under New Jersey's Green Acres program, creation of two lakes, and planting of a public garden around historic Washington Spring highlight the 1962 annual report of the Bergen County Park Commission.

The 2½ million visits to County parks represented an increase of nearly 300 per cent over 1961's 850,000 total, a record high at the time.

Final State approval for Green Acres program acquisitions in Alpine and Wyckoff arrived with the first matching-funds payment, a \$130,000 check reimbursing Bergen County for half the cost of an 86-acre Norwood tract. No other county or municipality had completed a Green Acres transaction with the State.

GREEN ACRES PROJECTS

On the Norwood property the Park Commission will add nine holes to the adjoining 18-hole Rockleigh Bergen County Golf Course.

Wooded sections of the 81-acre Wyckoff site will be used for hiking trails, overnight-camping areas, and picnic groves; and open sections will be used for play and service facilities. The property, extending back from Crescent Avenue, is the site of the former Lekneh pig farm.

Plans call for hiking trails, camping sites, and picnic facilities on the 93-acre Alpine tract.

Issuance of bonds to finance the County's share of the three Green Acres acquisitions was authorized by the Board of Freeholders.

In 1962 the park system acquired 274 acres of land from private owners, and 12.79 acres were deeded to the County by municipalities. Woodcliff Lake Borough donated 6.69 acres at the Wood Dale County Park site on Prospect Avenue. Rochelle Park gave 6.10 acres at the site of the old sewerage-treatment area off Saddle River Road.

TWO LAKES AND A GARDEN

Lakes were excavated at Van Saun County Park in Paramus and River Edge and at the site of Wood Dale County Park's first section in Woodcliff Lake Borough.

The 6-acre lake at Van Saun Park is in the south end which was opened to the public late in the year. Lighting was installed for ice skating.

Construction of a dam at the Wood Dale Park 4-acre lake site was advanced from spring of 1963 to December. The dam will permit lowering of the water level for winter ice skating. Opening of Wood Dale Park's first section is scheduled for fall of 1963. Considerable grading and filling were done around the lake in 1962.

Dogwood, azaleas, and tulips are among the plantings in the half-acre garden around Washington Spring in Van Saun Park. The 1962 project includes a rustic footbridge, paths, benches, and rail fences. A bronze marker tells the story of the spring.

CONSTRUCTION CREWS BUSY

Other developments during the year at Van Saun Park included extension of the park drive to Howland Avenue, widening of the main entrance on Forest Avenue, the start of renovation at the children's zoo, and installation of two new ball fields and a parking area for 252 cars. Parking for an additional 50 cars was provided near the lake.

At Riverside County Park North, Lyndhurst, the Park Commission added a ball field, two shuffleboard courts, an 1,800-square-foot maintenance building for South Bergen parks, and a paved combination parking and ice skating area measuring 200 by 140 feet. The combination area was flooded and lighted for ice skating during the 1962-63 season.

A 17,500-square-foot combination skating area and play court installed beside the Saddle River in Rochelle Park brought to 10 the number of lighted skating areas maintained by the Bergen County Park Commission.

Curbing was added to the ice skating rink at Riverside County Park South in North Arlington.

THREE FIRSTS IN THE PARKS

The Commission sponsored its first County tennis tournament, with 65 singles entrants and 45 doubles teams; its first free tennis clinics for children, with 104 pupils enrolled; and its first open-air band concert. All these events were held at centrally located Van Saun Park.

At Wild Duck Pond County Park in Ridgewood and Saddle Brook County Park, junior educational fishing programs were held under the guidance of the State Division of Fish and Game. Local groups sponsored the programs in co-operation with the Park Commission.

During 1962 the parks were also used for such diverse activities as a benefit horse show, high school cross-country races, a public lawn-building demonstration, and community carol singing.

Landscaping work continued throughout the County park system. The Park Commission also landscaped two public monuments, the Knickerbocker Road memorial to Camp Merritt, World War I staging area, and the statue of Revolutionary War General Enoch Poor opposite the County Courthouse. During the year, Commission crews planted 512 trees, 582 shrubs, and 1,500 bulbs and annuals.

In response to ever-increasing demand, picnic tables were added to many of the County parks. Picnic tables, ball fields, ice skating areas, and children's playgrounds are the most popular and most numerous facilities in the County park system.

The Park Commission made a variety of installations, ranging from shuffleboard courts at Riverside Park North to the dam at the site of the 14-acre first section of Wood Dale Park. As in the past, road-building was a major category. Surface treatment was applied to 62,000 square feet of drive at Dunkerhook County Park in Paramus, and 111,000 square feet of drive went in at the south end of Van Saun park.

To acquaint the public with park facilities, the Commission prepared and distributed posters and brochures. Copies of the illustrated brochure may be obtained from offices of the Bergen County Park Commission, Administrative Building, Hackensack.



A combination parking and ice skating area was added in 1962 at Riverside County Park, North, in Lyndhurst.

MASTODON AND MARINA ROLES

The Park Commission gave financial aid to the recovery of mastodon bones from a Hackensack farm. The exhibit will be placed in the proposed Bergen Community Museum when the museum building is erected. Materials salvaged from the old Schneider homestead in the path of the Bergen-Passaic Expressway have been stockpiled at Van Saun County Park for the museum.

A committee and consultant appointed by the Park Commission made a study of marina needs on several waterways and announced plans for installation of small-boat launching facilities on an experimental basis. The pilot project will be established on County park property bordering the Passaic River so that boat owners can have access to park facilities.

Late in the year, work was begun on renovation of the children's zoo at Van Saun Park. Plans were drawn for colorful new animal shelters to be constructed during the winter months at Park Commission shops.

FACILITIES FOR CAMPERS

Improvements added in 1962 to the overnight camping area at Campgaw Mountain County Reservation included a new well and pump and the first rustic Adirondack shelter. Several more shelters are to be installed in 1963. As the public became acquainted with the Reservation, there was a steady increase in use of camping and picnicking facilities.

Camp sites, like nearly all other County park facilities, are available without charge. Golf, tennis, and pony rides have been the only activities for which fees were set.

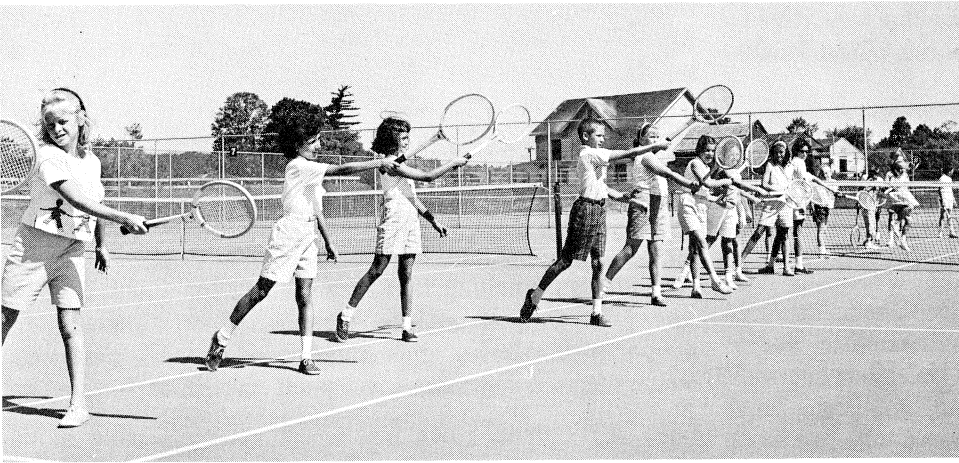
Use of the tennis center in Van Saun County Park has nearly doubled. In 1962 there were 11,246 visits by players, as compared to 5,772 visits in 1961. Gross revenue went from \$3,408 to \$6,311. The 1,789 identification registrations represented an increase of 504 over the 1961 figure.

At the Rockleigh Bergen County Golf Course the identification registration total was 8,712 for the past year, as compared with 7,907 in 1961. Golfers made 97,508 visits to the course in 1962, 80,755 visits in 1961. Gross revenue, \$141,604 in 1962, was \$121,946 in 1961.

PERMITS ADD UP

The Park Commission issued 1,325 permits during the past year. Permits are necessary for large picnic groups and for reservation of ball fields, camp sites, and the meeting room at Wild Duck Pond Park.

SPECIAL EVENTS IN



Free instruction was given to 104 youngsters at tennis center clinics in Van Saun County Park.

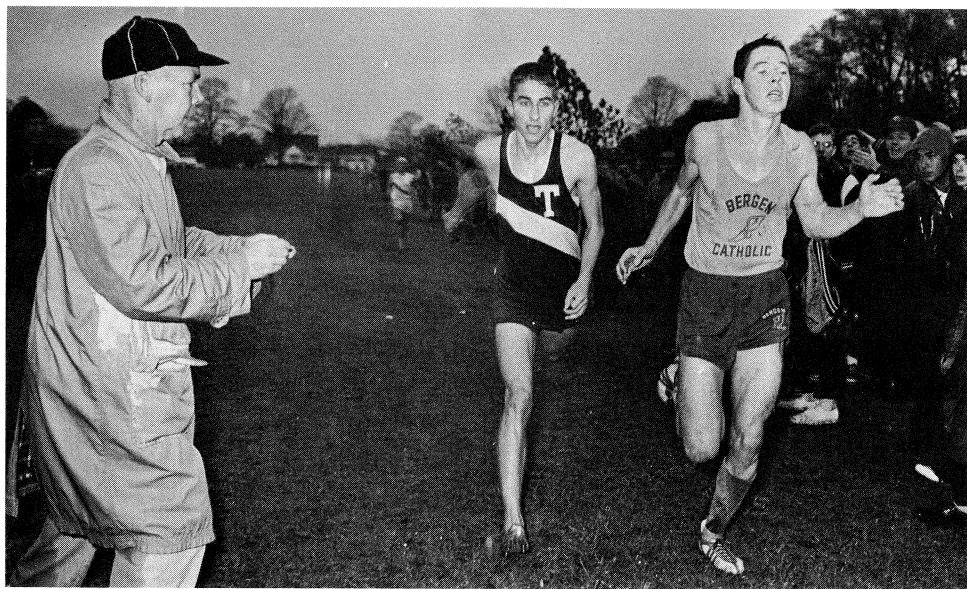
Winners of the first tennis tournament sponsored by the Bergen County Park Commission receive their prizes from Wilton T. Barney, president of the Oritani Savings and Loan, as Park Commissioner Rudolph A. Travers looks on.



Contents of this seine were returned to the lake at Saddle Brook County Park after a quick count to show youngsters that fish are there.

THE COUNTY PARKS

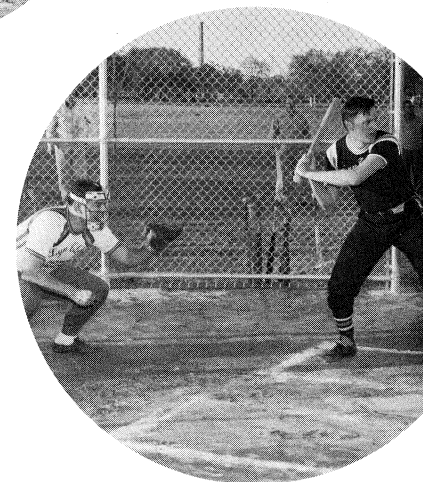
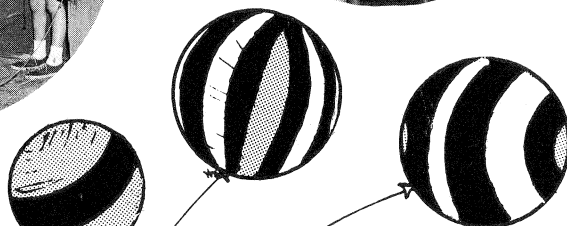
Bergen Catholic High School's Dave Faherty edges Steve St. Clair of Teaneck High School for individual honors in the Bergen County cross-country championships at Van Saun County Park.



The shelter at Van Saun County Park serves as band stand for a Sunday afternoon concert.

Dunkerhook County Park, a shaded picnic retreat in Paramus, had its formal dedication May 12, 1962.





*BASEBALL: Overpeck Park, Leonia, Palisades Park, Teaneck; Pascack Brook Park; Riverside Park, North and South areas; Saddle Brook Park; Van Saun Park; Wallington Park.

*CAMPING: Campgaw Mountain Reservation.

CHILDREN'S FISHING: Dahnert's Lake Park; Saddle Brook Park; Van Saun Park; Wild Duck Pond Park.

CHILDREN'S PLAY EQUIPMENT: Belmont Hill Park; Campgaw Mountain Reservation; Dahnert's Lake Park; Dunkerhook Park; Riverside Park, North and South areas; Saddle Brook Park; Van Saun Park; Wild Duck Pond Park.

CHILDREN'S ZOO: Van Saun Park.

DUCK-FEEDING: Dahnert's Lake Park; Saddle Brook Park; Van Saun Park; Wild Duck Pond Park. A duck-feeding station is planned for Wood Dale Park, now under construction.

FOR YOUR

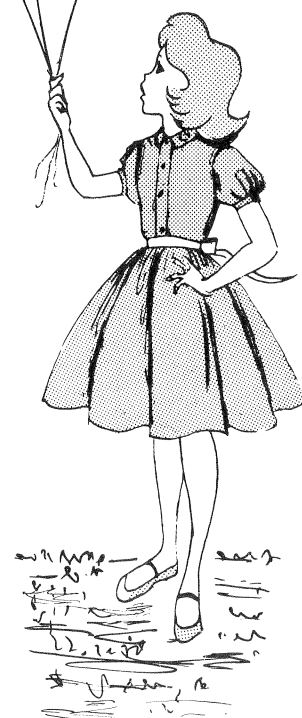
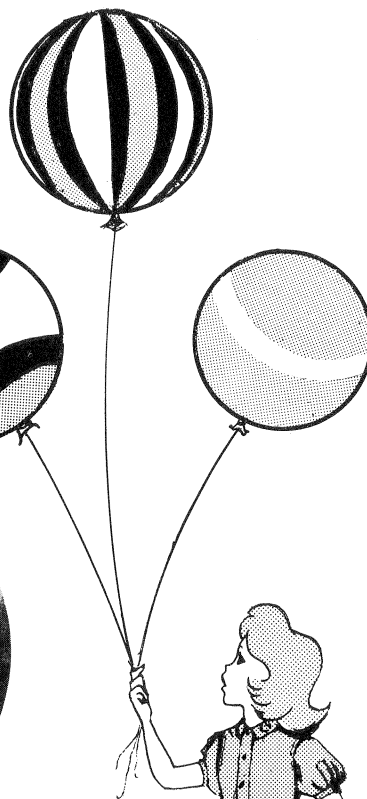
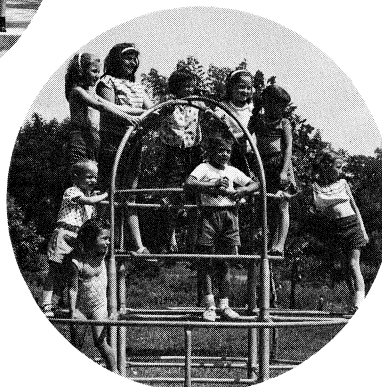
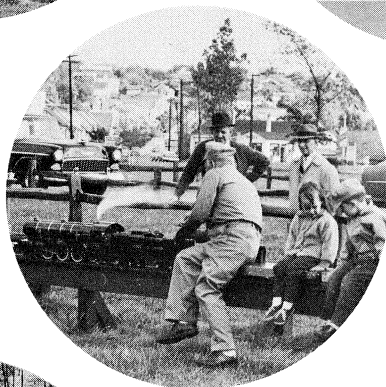
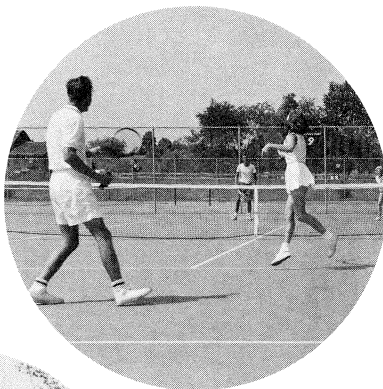
*FOOTBALL: Pascack Brook Park; Saddle Brook Park; Wallington Park.

GARDENS: Historic Washington Spring Garden at Van Saun Park; rose garden atop Belmont Hill Park.

GOLF: Rockleigh Bergen County Golf Course (18 holes, with 9 to be added).

HIKING: Three nature trails at Campgaw Mountain Reservation.

HORSESHOE-PITCHING: Riverside Park, North and South areas; Saddle Brook Park; Van Saun Park; Wild Duck Pond Park; Dunkerhook Park.



ENJOYMENT

ICE SKATING (Natural Ice): Dahnert's Lake Park; Overpeck Park, Leonia; Palisades Park; Riverside Park, North and South areas; Rochelle Park Rink; Saddle Brook Park; Van Saun Park; Wallington Park; Wild Duck Pond Park. Skating will be permitted on the lake at Wood Dale Park, scheduled to open 1963.

MODEL-BOAT SAILING: Dahnert's Lake Park; Saddle Brook Park; Wild Duck Pond Park; Wood Dale Park when it opens.

****PICNICKING:** Belmont Hill Park; Campgaw Mountain Reservation; Dunkerhook Park; Overpeck Park, Leonia; Riverside Park, North and South areas; Saddle Brook Park; Van Saun Park; Wallington Park; Wild Duck Pond Park; Wood Dale Park when it opens.

RIDING (Ponies and Horses): Van Saun Park.

RIDING THE RAILS: Model steam railroad at Riverside Park South. Adding children's railroad in 1963 at Van Saun Park.

SHUFFLEBOARD: Riverside Park North; Van Saun Park; Wild Duck Pond Park.

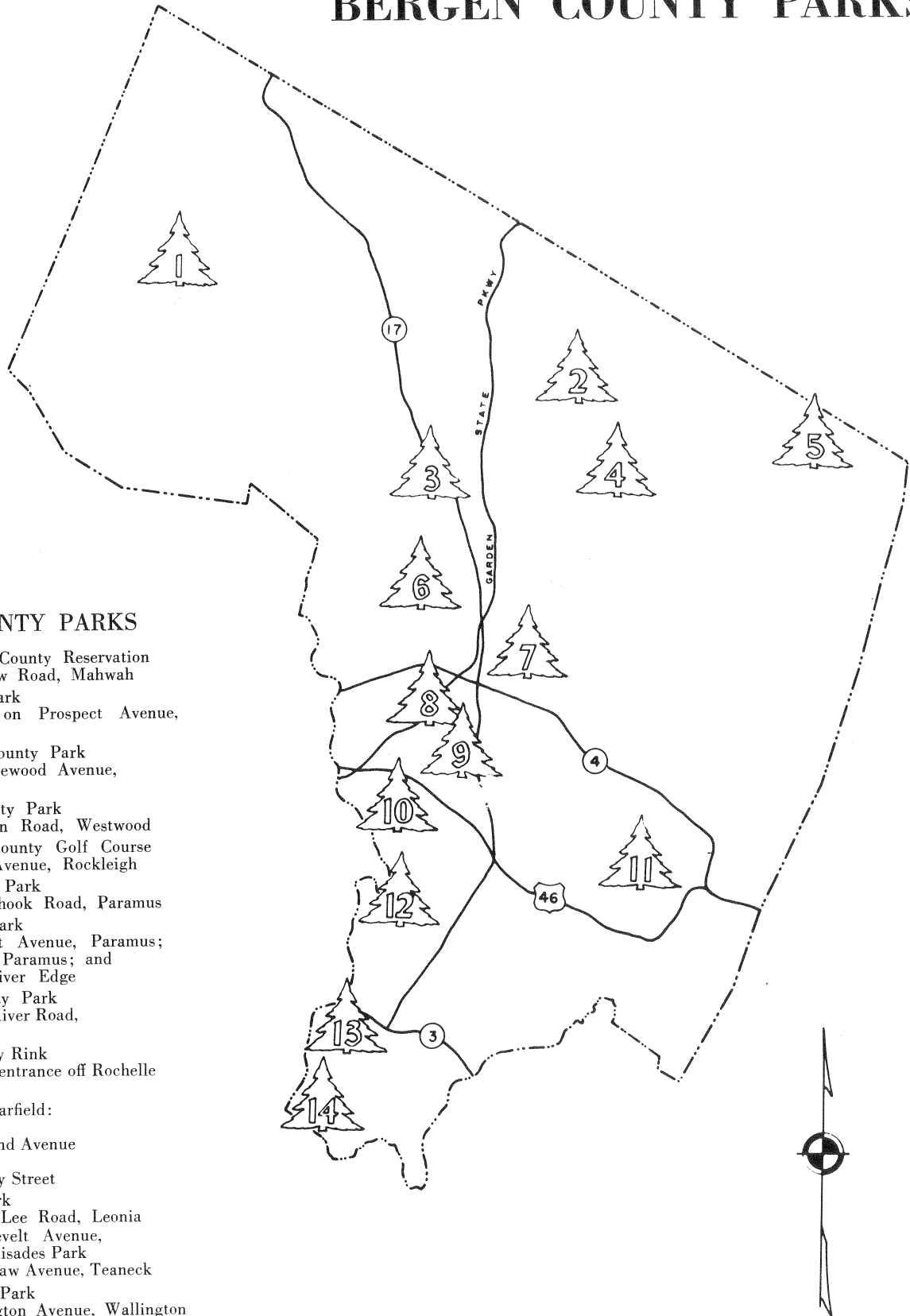
TENNIS: Van Saun Park (12 all-weather courts).

*Permits for use of ball fields, camp sites, and the Wild Duck Pond Park recreation room may be obtained from Park Commission offices.

**Picnic groups of 10 or more persons are requested to apply to the Park Commission for permits.

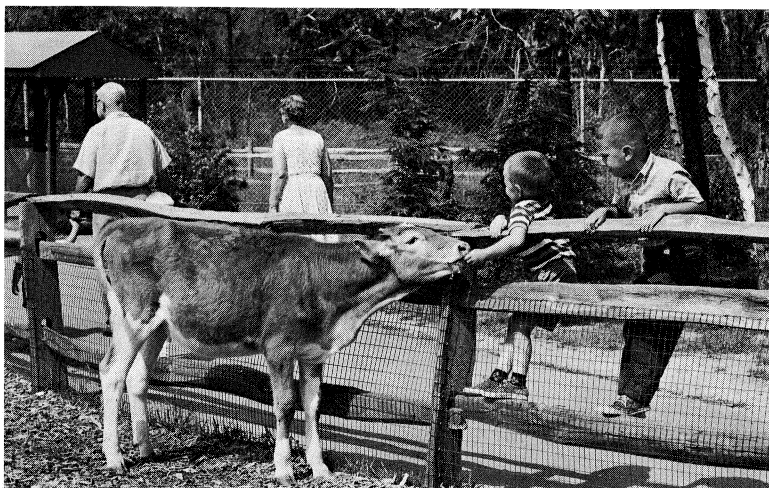
BERGEN COUNTY PARKS

- BERGEN COUNTY PARKS**
1. Campgaw Mountain County Reservation
Entrance on Campgaw Road, Mahwah
 2. Wood Dale County Park
Under construction on Prospect Avenue,
Woodcliff Lake
 3. Wild Duck Pond County Park
Entrance on E. Ridgewood Avenue,
Ridgewood
 4. Pascack Brook County Park
Entrance on Emerson Road, Westwood
 5. Rockleigh Bergen County Golf Course
Entrance on Paris Avenue, Rockleigh
 6. Dunkerhook County Park
Entrance on Dunkerhook Road, Paramus
 7. Van Saun County Park
Entrances on Forest Avenue, Paramus;
Continental Avenue, Paramus; and
Howland Avenue, River Edge
 8. Saddle Brook County Park
Entrance on Saddle River Road,
Saddle Brook
 9. Rochelle Park County Rink
Beside Saddle River, entrance off Rochelle
Avenue
 10. County Parks in Garfield:
Dahnert's Lake
Entrance on Midland Avenue
Belmont Hill
Entrance on Botany Street
 11. Overpeck County Park
Entrances on: Fort Lee Road, Leonia
Roosevelt Avenue,
Palisades Park
DeGraw Avenue, Teaneck
 12. Wallington County Park
Entrance on Wallington Avenue, Wallington
 13. Riverside County Park, North Area
Entrance on Riverside Avenue, Lyndhurst
 14. Riverside County Park, South Area
Entrance on River Road, North Arlington

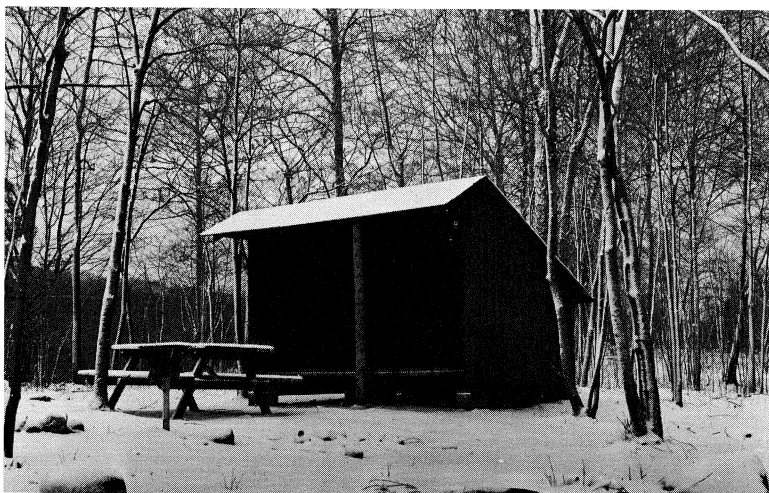




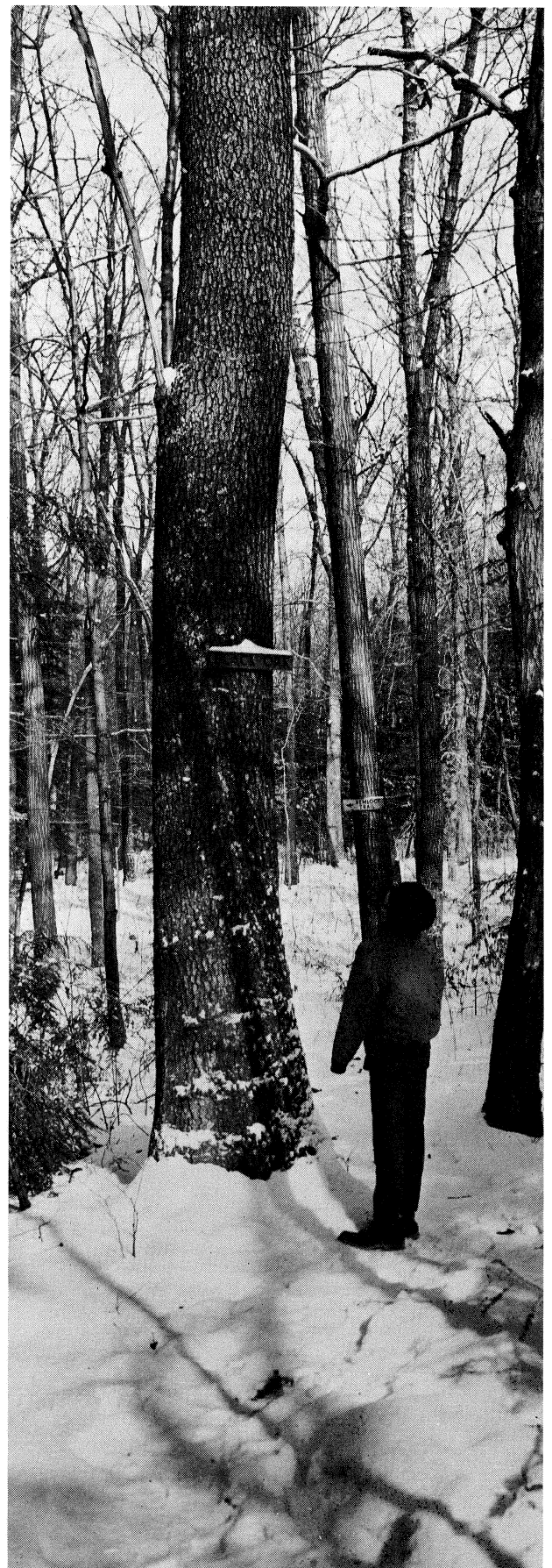
The new Bergen County Rink beside the Saddle River in Rochelle Park is one of 10 natural-ice skating areas maintained by the Commission.



The Children's Zoo in Van Saun County Park includes woodland and farm animals and a few exotic species from faraway places.



This is the first Adirondack shelter installed in the overnight-camping area at Campgaw Mountain County Reservation.



A black oak on one of the three hiking trails at Campgaw Mountain County Reservation has a winter visitor.

THESE ARE YOUR COUNTY PARKS

Belmont Hill County Park Garfield

Rose garden, scenic lookout, children's play equipment, park benches and picnic tables, parking.

Campgaw Mountain County Reservation

Mahwah, Franklin Lakes, Oakland

Nature trails, overnight camping sites, picnic tables and fireplaces, children's play equipment, privies, parking, ranger service.

Dahnert's Lake County Park Garfield

Fresh-water pond, ice skating, duck-feeding, children's fishing, children's play equipment, paths and benches.

Dunkerhook County Park Paramus

Picnic tables and fireplaces, duck-feeding, children's play equipment, horseshoe courts, shelter, parking.

Overpeck County Park (Four Sections)

Leonia Section

Baseball, picnic tables and fireplaces, natural ice skating rink, parking.

Palisades Park Section

Baseball, natural ice skating rink.

Ridgefield Park Section

Landscaped park drive (blocked by highway construction).

Teaneck Section

Baseball, parking.

Pascack Brook County Park Westwood and River Vale

Baseball, softball, and football, bleachers and benches, parking.

Riverside County Park

North Area, Lyndhurst

Horseshoe courts, baseball and softball, ice skating, shuffleboard, picnic tables, benches, fireplaces, children's playground, comfort station, refreshment center, parking.

South Area, North Arlington

Miniature steam railroad, baseball and softball, natural ice skating rink, horseshoe courts, picnic tables and fireplaces, children's playground, comfort station, parking.

Rochelle Park County Rink Rochelle Park

Natural ice skating, play court.

Rockleigh Bergen County Golf Course Rockleigh, Northvale, Norwood

Eighteen-hole golf course, with nine more holes to be added. Club house with snack bar and pro shop. Paths and parking.

Saddle Brook County Park Saddle Brook

Lake, duck-feeding, children's fishing, baseball and football, children's playground, natural ice skating rink, picnic tables and fireplaces, horseshoe courts, comfort station, parking, pedestrian entrance.

Van Saun County Park Paramus and River Edge

Children's zoo, 12 tennis courts and pro shop, historic Washington Spring Garden, pony rides, bridle trails, exhibition horseshow paddock, horses for hire, riding lessons available, shuffleboard and horseshoe courts, 6-acre lake, natural ice skating, sledding slopes, picnic tables and fireplaces, large children's playground, duck-feeding, ball fields, park shelter, park benches, comfort station, refreshment center, parking. Children's railroad to be constructed around zoo in 1963.

Wallington County Park Wallington

Pond, natural ice skating, sledding slopes, baseball and football, picnic tables and fireplaces, benches, and path system.

Wild Duck Pond County Park Ridgewood

Pond, natural ice skating, duck-feeding, picnic tables and fireplaces, shuffleboard and horseshoe courts, children's fishing, children's playground, patio and log-burning fireplace for skaters, recreation room, comfort station, path system and benches, parking.

Wood Dale County Park Woodcliff Lake, Hillsdale, and Park Ridge

First section, in Woodcliff Lake, scheduled to open in autumn of 1963. It will include a 4-acre lake, duck-feeding station, picnic facilities, and parking. Ice skating will be permitted when safety conditions warrant it.



The whole gang enjoys tenting out at Campgaw Mountain County Reservation.

BERGEN COUNTY PARK COMMISSION
CONDENSED STATEMENT OF PROPERTIES
COMMITTED OR ACQUIRED FOR PARK PURPOSES
BOND AND BUDGET ACCOUNTS

Close December 31, 1962

AREAS	SUB-TOTALS		TOTALS	
	ACREAGE	COSTS	ACREAGE	COSTS
OVERPECK CREEK				
Purchased or Committed	125.79	\$180,874.00		
Municipal Properties donated	957.06	—0—		
Riparian Rights Committed	—0—	45,311.19		
			1,082.85	\$ 226,185.19
PASSAIC RIVER				
Purchased or Committed	49.93	121,321.00		
Municipal Properties donated or committed	81.06	—0—		
			130.99	121,321.00
SADDLE RIVER				
Purchased or Committed	492.52	543,705.00		
Municipal Properties donated or committed	58.86	3,000.00		
Private Properties donated	8.77	1.00		
			560.15	546,706.00
SOUTHWEST BERGEN				
Purchased or Committed	0.12	2,200.00		
Municipal Properties donated	18.53	2.00		
			18.65	2,202.00
VAN SAUN				
Purchased or Committed	138.09	194,561.73		
Private Properties donated	1.25	—0—		
			139.34	194,561.73
NORTHWEST BERGEN				
Purchased or Committed	1,282.93	1,035,813.71		
Municipal Properties donated	2.33	—0—		
			1,285.26	1,035,813.71
NORTHEAST BERGEN				
Purchased or Committed	340.55	787,806.75		
Municipal Properties donated	0.32	—0—		
Private Lands donated	13.08	—0—		
			353.95	787,806.75
PASCACK BROOK				
Purchased or Committed	24.67	53,321.88		
Municipal Properties donated	110.00	—0—		
			134.67	53,321.88
PASCACK VALLEY				
Purchased or Committed	109.98	232,869.00		
Municipal Properties donated	6.69	—0—		
			116.67	232,869.00
HACKENSACK RIVER				
Properties Purchased08	10.00
			3,822.61	\$3,200,797.26

SUMMARY OF LAND ACQUISITION

	ACREAGE	COSTS
Private Properties Purchased or Committed	* 2,564.66	\$3,152,483.07
Private Properties Donated	23.10	1.00
Municipal Properties Acquired or Committed	1,234.85	3,002.00
Riparian Rights Committed 45,311.19 Lin. Ft.	—0—	45,311.19
	3,822.61	\$3,200,797.26

ANTICIPATED SOURCE OF FUNDS

BERGEN COUNTY PARK COMMISSION BOND AND BUDGET ACCOUNTS	\$2,670,797.26
NEW JERSEY STATE GREEN ACRES ASSISTANCE PROGRAM	530,000.00
TOTAL	\$3,200,797.26

Note: * The above total of private properties purchased or committed comprising 2,564.66 acres at a cost of \$3,152,483.07 averages \$1,229.20 per acre.

BERGEN COUNTY PARK COMMISSION
LAND ACQUISITION PROPERTIES COMMITTED OR ACQUIRED
BOND AND BUDGET ACCOUNTS

Close December 31, 1962

DESCRIPTION	SUB-TOTALS		TOTALS	
	ACRES	COST	ACRES	COST
PRIVATE PROPERTIES COMMITTED OR ACQUIRED				
Reported close of December 31, 1961	2,313.66	\$2,067,601.07		
Adjustments 1962	<u>—0—</u>	<u>—0—</u>		
PRIVATE PROPERTIES COMMITTED OR ACQUIRED 1962			2,313.66	\$2,067,601.07
Twelve (12) parcels of land with appurtenances were committed or acquired in three (3) areas	274.10	1,084,383.00		
Option on Wyckoff properties	<u>—0—</u>	<u>500.00</u>		
			274.10	#1,084,883.00
MUNICIPAL PROPERTIES COMMITTED OR ACQUIRED				
Reported close of December 31, 1961	1,299.58	3,002.00		
Acreage adjustments 1962. Properties not desirable for County parks and returned to Municipalities	<u>—77.52</u>	<u>—0—</u>		
			1,222.06	3,002.00
MUNICIPAL PROPERTIES ACQUIRED 1962				
Borough of Woodcliff Lake	6.69	<u>—0—</u>		
Township of Rochelle Park	<u>6.10</u>	<u>—0—</u>		
			12.79	<u>—0—</u>
RIPARIAN RIGHTS COMMITTED				
Reported close of December 31, 1961, 45,311.19 Linear Feet				45,311.19
			** 3822.61	\$3,200,797.26

Note: ** Approximately 190 acres of park lands in the Overpeck Creek Area are being taken by the State of New Jersey for the Bergen-Passaic Expressway. The exact acreage taken will be deducted after the State definitely establishes the line of taking.
The New Jersey Green Acres Assistance Program has reimbursed the County of Bergen in the sum of \$130,000.00 for 50% of the cost of land included in this total and has made tentative commitments for two additional payments of \$200,000.00 each upon closing of title.

AUDITOR'S REPORT

February 14, 1963

Bergen County Park Commission
Administrative Building
Hackensack, New Jersey

Gentlemen:

I have examined the financial records of the Commission for the year ending December 31, 1962 and, as a result of this examination, I submit the following:

BUDGET FUNDS

SURPLUS, JANUARY 1, 1962	\$ 10,635.51
PLUS: CANCELLATION OF PRIOR YEARS' COMMITMENTS	19,078.63
ADJUSTED SURPLUS, JANUARY 1, 1962	\$ 29,714.14
BUDGET APPROPRIATIONS—1962	<u>1,014,505.00</u>
	\$1,044,219.14

EXPENDITURES:

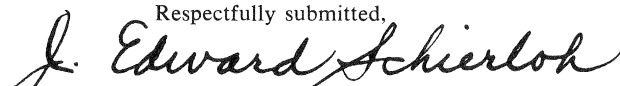
Salaries and Wages	\$601,753.18
Office Operating Expenses	26,556.15
Engineering and Drafting	3,965.41
Land Acquisition	5,514.58
Legal Expenses	5,305.00
Field Operating Expenses	39,159.63
New Field Equipment	47,581.02
Maintenance Materials	<u>200,434.31</u>
	930,269.28
LESS: RESERVE APPROPRIATIONS—1962	\$ 113,949.86
	84,235.72
SURPLUS, DECEMBER 31, 1962	<u>\$ 29,714.14</u>

BOND ISSUES

BALANCE AVAILABLE, JANUARY 1, 1962	\$ 531,625.25
COUNTY PARK BONDS AUTHORIZED—1962	267,000.00
STATE GREEN ACRES FUNDS AVAILABLE—1962	<u>530,000.00</u>
	\$1,328,625.25
LESS:	
DISBURSED AND COMMITTED FOR LAND ACQUISITION AND IMPROVEMENTS	1,086,784.77
BALANCE AVAILABLE, DECEMBER 31, 1962	<u>\$ 241,840.48</u>

All vouchers were examined and found to be properly approved. Checks issued in payment of these vouchers were compared with both the voucher and the entry in the financial records. These were found to be correct.

Cash in banks was reconciled with the book figures.

Respectfully submitted,

Certified Public Accountant
(N. J. & N. Y.)



Photos courtesy of THE RECORD



BERGEN COUNTY PARK COMMISSION
ANNUAL REPORT FOR 1962
