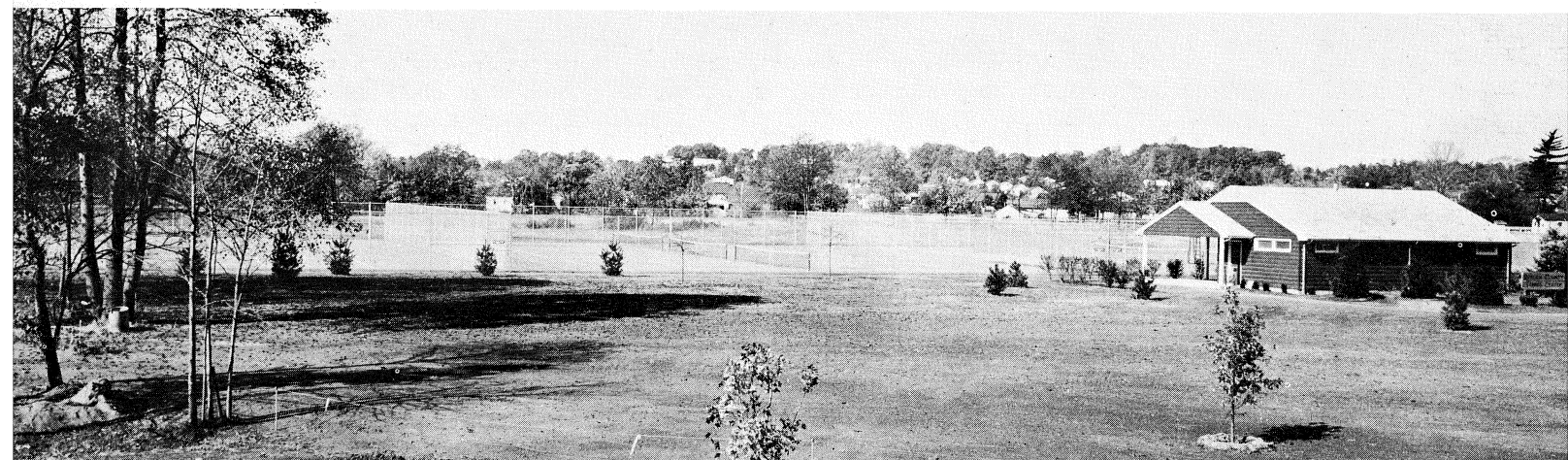




**1960**  
**FOURTEENTH**  
**ANNUAL**  
**REPORT**



## Work In Progress On Tennis Courts; Park Commissioners Let Contracts

Newly appointed Commissioner Peter Moriates was appointed by Hollenbeck as chairman of the land acquisition committee with Valien to succeed Mrs. Bernice Alexander.

Moriates was appointed chairman of the recreation committee and Mrs. Alexander a member of the committee.

Hollenbeck appointed Mrs. Alexander chairman of the public relations committee to succeed Walden.

Another new commissioner, Rudolph A. Travers, was appointed long range and new sites committee chairman to succeed Walden.

"We shall soon be obliged to decide just how fast we intend to decide what has been correctly described as a race for open park space," Walden said. "I think we ought to have a referendum next year and decide whether or not we want to acquire the land and we shall need in our park system," he said.

Special recreational facilities designed primarily for senior citizens will be installed in many Bergen County parks during 1961. Freeholder Alfred S. Waldon yesterday told members of the Teaneck Allegro Club, an organization of citizens over 60 years of age who meet weekly in Williams Hall, Fairleigh Dickinson University.

Walden a former member of the Bergen County Park Commission and now chairman of the park committee, said that the Park Commission's 1961 budget includes funds for the construction of a shelter at Van Saun Park, Paramus, which will be primarily for senior citizens.

pitching courts also will be installed at Van Saun next year.

Two shuffleboard courts and four horseshoe pitching courts will be installed at Wild Duck County Park, Ridgewood. Four horseshoe courts will be provided in Saddle Brook County Park, North Arlington County Park and Lyndhurst County Park.

"These facilities will not be limited to senior citizens," declared Walden, "but will be primarily for their use. The Park Commission also plans to start developing the Campgaw Mountain County Reservation."

Initial development of the 930-acre Campgaw Mountain County Reservation in Mahwah, Oakland and Franklin Lakes will begin immediately, it was announced by the Bergen County Park Commission.

Harold J. Hollenbeck, president said that the first stage of development will include the construction of an entrance and drive from Campgaw Road to a parking lot, a distance of about 3,000 feet. The Commission also will develop a construct picnic fire



Board of Chosen Freeholders  
Administrative Building  
Hackensack, New Jersey

Gentlemen:

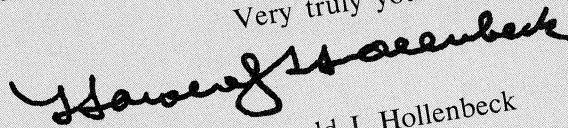
Aware of the responsibility to its residents, the Bergen County Park Commission is actively engaged in keeping pace with the County's growing need for recreational areas and facilities.

Land acquisition and the expansion of its present facilities are major factors in the minds of the Commission.

Provision must be and is being made for the efficient administration of all operating facilities for a growing population and minimizing the destruction of the natural growth and beauty throughout the park system.

The Commission is grateful to the Board of Chosen Freeholders for its support in giving recreation a priority position on its agenda during the year.

Very truly yours,



Harold J. Hollenbeck  
President

#### BERGEN COUNTY PARK COMMISSION

1960

HAROLD J. HOLLENBECK  
*President*

\*Arthur Seward                      William Staubach  
*Vice President*                      *Secretary*

Alvin G. Yhlen                      Harold M. Davison  
*Assistant Secretary*

Dr. George L. Kingslow      \*\*Mrs. S. F. Alexander

\*\*Alfred S. Walden              Rudolph A. Travers  
Peter Moraites

James A. McFaul                  Herbert H. Handelsmann  
*Executive Director*                  *Staff Director*

George A. Duffy  
*Counsel*

#### BOARD OF CHOSEN FREEHOLDERS

1960

\*\*MRS. WILMA MARGGRAFF  
*Director*

Fred W. Meuter                      Anthony Pepe

Edmund E. Field, Jr.                  Albert Moskin

John K. Pollitt                      \*\*\*Peter W. Passaro

Arthur W. Vervaeet                  Alfred S. Walden

Mrs. Stewart F. Alexander          Robert L. Olson

William R. Smith                      Milton T. Lasher  
*Executive Administrator*                  *County Counsel*

\* Deceased

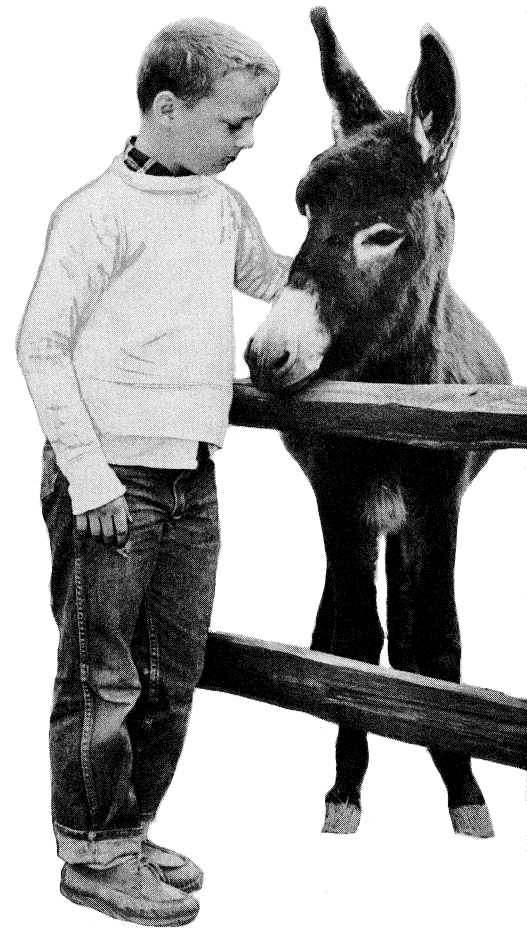
\*\* Resigned upon election to Board of Freeholders

\*\*\* Resigned



Little John Mac Master feeds the European fallow deer at the children's zoo in Van Saun Park.

The Record Photograph



# Growing To

Bergen County, first settled in the 17th Century, covers an area of 246.98 square miles with elevations ranging to 800 feet above sea level.

There are 150,000 acres in the County with approximately 10,000 acres devoted to farms and farmlands.

Geographically, Bergen County's location is outstanding. It is within reasonable commuting time from the important employment center of Manhattan; also its proximity to the central areas of Hudson, Essex, and Passaic counties and its location adjacent to the New York State boundary to the north offer further advantages. Bergen County also has a thriving industrial base of its own.

These advantages are proven by the popula-

tion growth in the County during the past decade, which broken down gives a clear vision of the progress we must maintain to fulfill the needs of the County in recreational facilities.

## POPULATION GROWTH

1940 .....	409,646
1950 .....	539,139
1960 .....	794,120

To meet the needs of this increase in population your Park Commission acquired about 300 acres of desirable park lands during the year. Land owned by the County for recreational purposes now totals about 3,591 acres, or about one-half of the goal set by the Commission as





# Meet A Great Need

Access road under construction at Campgaw Mountain Reservation.

The Record Photograph

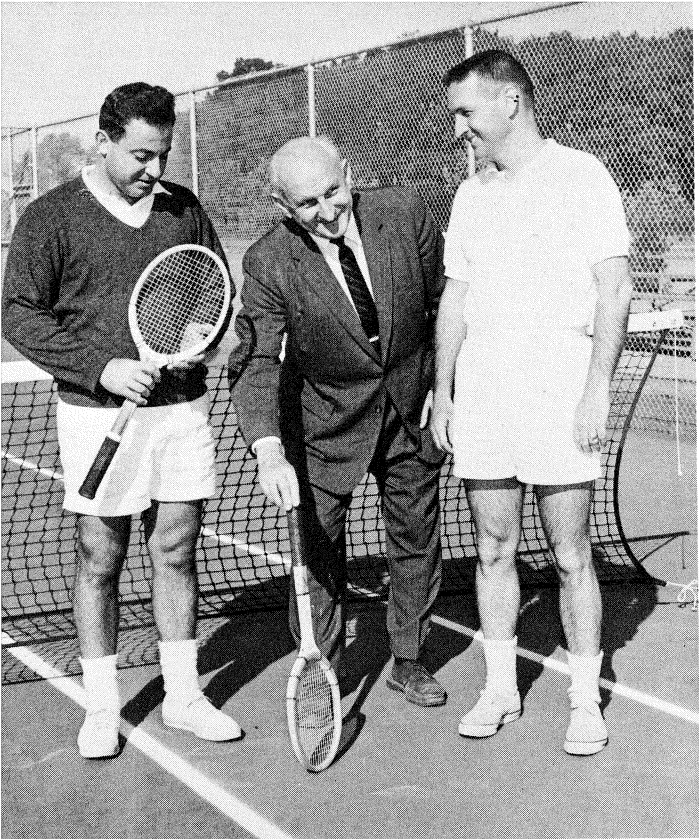
necessary to meet the presently anticipated requirements of our population.

Unfortunately, after acquiring properties available for a park system, public agencies, in their efforts to provide highways for the transportation of our growing population, greatly retard our progress and disassemble park lands to the disadvantage of the Commission's original intent. The Bergen-Passaic Expressway now under construction, will take approximately 190 acres of park land in the Overpeck Creek Area.

Soon after the Act creating the Commission in 1946, a land acquisition program started. This program was our main concern during the early years and continues as a major effort. However, larger parcels of land suitable for County Park

purposes are becoming increasingly difficult to find. Dedicated to the preservation of open space and mindful of its great responsibility to help satisfy the park and recreation needs of a rapidly growing population, the Bergen County Park Commission will continue to judiciously and actively acquire land for parks and to bring these areas into full public use as rapidly as possible.

The demands for all types of parks and recreation facilities will increase during the next 25 years in the New York Metropolitan Region. During the year approximately 650,000 visitors used the County Parks—ample evidence of the need for periodic relief from the pressure and strain of everyday living and the need for recreation—the re-creating of mind and body.



Two tennis stars, Ronald W. Kerdasha (left) and Calvin D. McCracken tell Commission President Harold J. Hollenbeck some fine points at dedication of center.

The Record Photograph



Field House at Tennis center in Van Saun Park. Twelve courts are in the background.

## County Tennis Center

Recognizing the requests of many County residents, the Commission appointed an impartial committee of four citizens to make a survey of the possible need of public tennis court facilities. Subsequently in a report submitted to the Commission, the committee recommended that 12 courts of all-weather asphalt material be constructed in centrally located Van Saun Park in River Edge and Paramus.

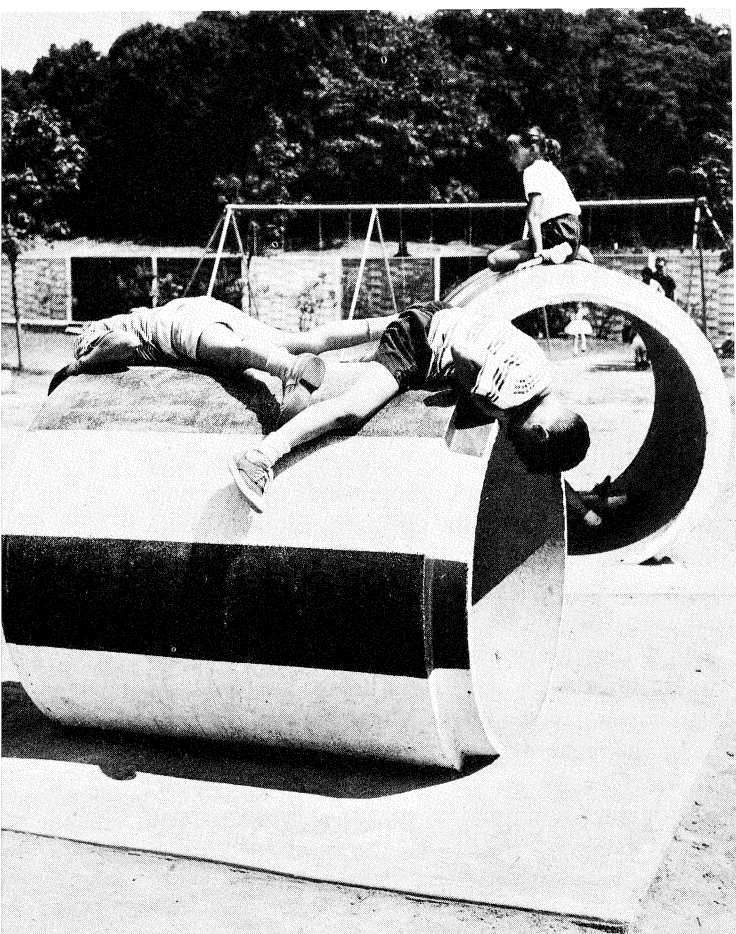
As a result of this report, work was initiated in April 1960 for the Bergen County Tennis Center, which was officially dedicated and opened to the public in October.

Twelve courts of all weather asphalt construction with a complete field house are now available for use by the tennis-minded public during the playing season.

The area has been landscaped with our own cultivated nursery stock adding much to the attractiveness of the courts and building.

A new parking lot is conveniently located for those interested in using the courts.

Children's playground at Van Saun Park is always popular.







Ice skating at Wild Duck Pond, County Park, Ridgewood.

## Wild Duck Pond In Ridgewood

Reconstructing the shore line and dredging the lake increased the depth of water to four feet with a six-foot channel. Fish life is encouraged by the depth of the channel during the ice skating season when the water is lowered for safe skating. A faster flow of water is now permitted to enter the lake thus eliminating the stagnant water pockets and potential insect breeding.

The storehouse building has taken on a new appearance with the green shingle siding and white trim which blends with the general landscaping.

A new parking lot was added and the east drive was completed for 2200 feet, and now connects with the west drive.

The new comfort station is now open to the public.

A children's playground was installed north of the comfort station and will be further developed.

Ice skating is the main attraction in the park during the winter season with flood and path lights provided for safety.

The annual small fry pan fishing contest sponsored by the local service clubs was again held

at the park. Application has been made to the State to stock the lake with trout to encourage those entering the contest. Last year 462 fish were caught and registered.

The Girl Scouts have again taken advantage of the day camping area which the Commission plans to extend to meet the demands for this type of recreation. The "Klondike Derby," another annual event in this park, attracts many visitors who witness this novel contest of dog sled maneuvering.

An added attraction to the area is the number of Canadian geese seen at the lake each morning and leaving after sunset. The wild duck feeding station, constructed of flagstone at the west park entrance, is popular with both the adult and the children who enjoy the actions of the wild life.

## Children's Zoo And Playground

The children's zoo and playground in Van Saun Park were completed and opened to the public in May.

Educational and amusing, the animals and birds, including raccoons, deer, a burro, lambs, ducks, turkeys, squirrels, etc., exhibited in their colorful shelters are appreciated by both the young and their seniors. No fee is charged for entry to the zoo, which is open daily with ample parking and scenic picnic areas nearby for those who enjoy cooking out. Zoo attendance is highest over holidays and weekends with slides, seesaws, swings, climbers and sand boxes in constant use. Uniformed attendants are on duty to assist the public.

## Riverside Park, Lyndhurst

The North Area of Riverside Park was host to over 129,000 residents, excluding those visiting from neighboring Counties.

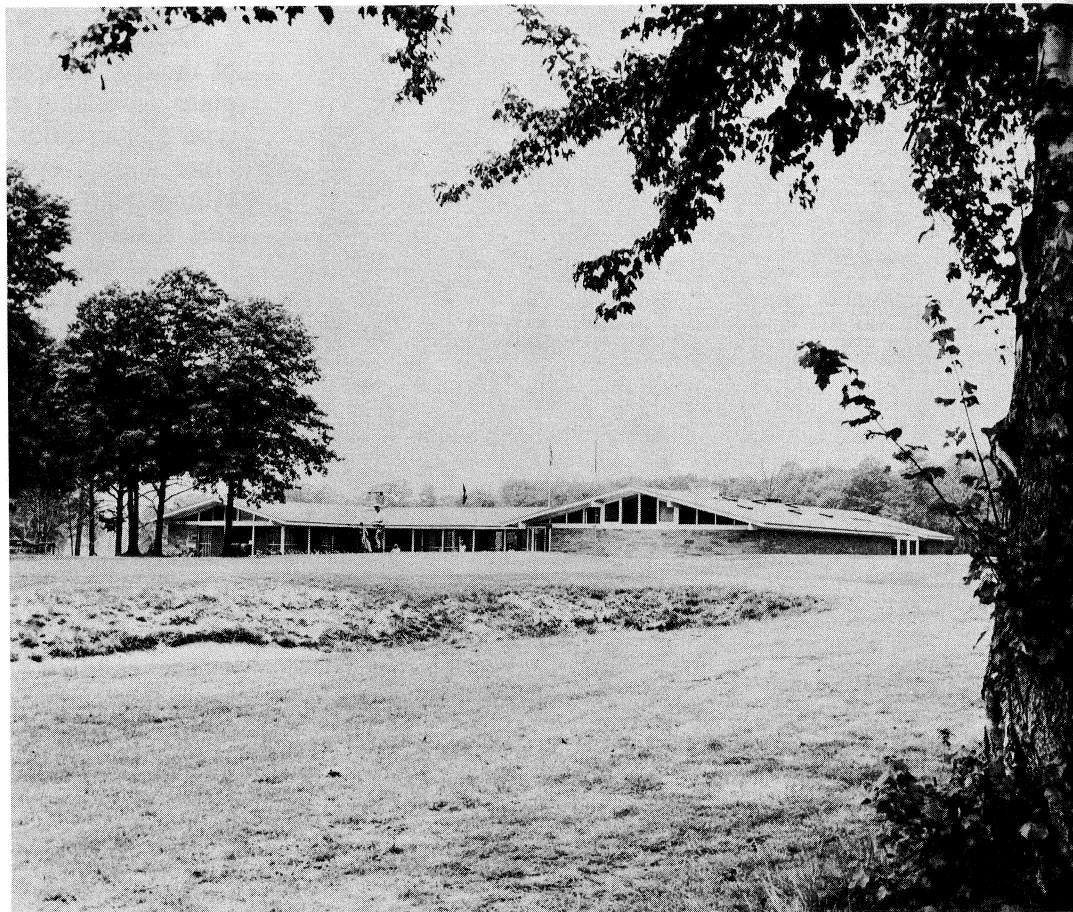
This park is also used by organized civic, religious and social groups throughout the County who apply annually to the Commission for use of its picnic areas, rest rooms, children's playground, baseball field and parking facilities.

The area abutting the shore line is desirable for picnicking and is encouraged by placing tables and fireplaces for the visitors' convenience. Running water is available.

New playground equipment was installed and the park drive and parking lot were resurfaced after 8 years of use and are now in excellent condition.

# Popularity of **ROCKLEIGH - BERGEN**

Clubhouse at Rockleigh  
County Golf Course.  
Over 9,000 Bergen  
County residents are  
members of this club.



Playing out of a sand-  
trap at the 18th hole.



The 19th hole—snack  
bar at the clubhouse.





# N COUNTY GOLF COURSE

## Campgaw Mountain County Reservation

This area now comprises approximately 1,204 acres with over 3,000 foot frontage on Campgaw Road and Ramapo Valley Road (Route 202). Plans call for dividing the area into two sections.

Approximately 930 acres of this virgin and heavily wooded land, which is becoming a rarity in Bergen County, is reserved for a natural wild life reservation.

Nature trails, bird watching, camping, tree and plant identification are some of the attractions planned for this section.

Each year more people show an interest in this mountain area. Late in 1960, the Commission started land clearing for an access road and parking lot. Fresh drinking water and added picnic facilities, campsites and labeled nature trails will be ready in 1961. The Commission's 10 acre plant nursery is located here with all nursery stock identified for the visiting gardener and horticulturist.

The recently acquired land, comprising approximately 274 acres abutting the Ramapo Valley Road (Route 202), is being studied for future development and is not to be included as part of the wildlife reservation.

## Garfield Area

This area is composed of several parks located throughout the City.

The most picturesque is Dahnerts Lake Park, which consists of a 3½ acre lake surrounded by flowering shrubs and shade trees giving the park setting a restful atmosphere.

Foot paths, benches and a landscaped stone-walled island add to the peaceful environment of this park.

Ice skating is enjoyed during the winter season, when the red ball flag is displayed. It is estimated that upwards of 2,000 skaters enjoy this recreation daily. Future plans call for the expansion of facilities in this area to the east.

Belmont Hill Park, an area of 9-1/5 acres, is ideally located at the highest elevation in the City. An unobstructed view to the west overlooks the City to the Watchung Mountains. An asphalt park drive leading to the parking area at the highest point is supplemented by park benches and a children's playground, where safety from traffic was exercised by installing a chain link fence adorned by climbing roses of various colors.

The Rose Garden, admired by all visitors, consists of a circularly prepared bed where 42 varieties of ever-blooming roses are maintained by the Commission and present a maze of colors during the flowering season.

Shade trees and the installation of split-rail fencing add to the beautification of the park design.

Belmont Oval and 20th Century Field are used for athletic activities. Baseball, soccer and football are the main sports in these areas which are booked to capacity during the seasons. Regulation baseball backstops are provided by the Commission with player benches for those participating in the games.

In Memorial Field located in the northeast section of the City, the Commission maintains a park area of 6½ acres on which a hard ball field was constructed and, upon popular demand, a second field for softball with backstop. Memorial Day services are held at the park annually.

A path system, supplemented by park benches, flowering shrubs, shade trees and colorful plantings add to the landscape.

## Saddle Brook Park

This park is located along the westerly and easterly banks of the Saddle River in the Townships of Saddle Brook and Rochelle Park, and was created by the Commission from a vast swamp and flood water area, mostly with fill from the relocated Saddle River.

With the cooperation and assistance of the Board of Chosen Freeholders, the improvement of this area, together with the flood control basin, has eliminated the serious flood damage previously suffered by the abutting property owners.

During the year several new installations were added, including a modern comfort station and playground equipment. A 30 foot wide park drive and a series of paths with plantings lead to the various facilities and spacious parking lot.

Fishing and model boat enthusiasts use the lake area daily. Annual fishing contests are held by organized groups in the stocked waters and sizable pan fish are caught by the contestants.

The athletic field and picnic area of tables with fireplaces are constantly in demand, and the open fields are annually requested by national youth organizations for camping purposes.

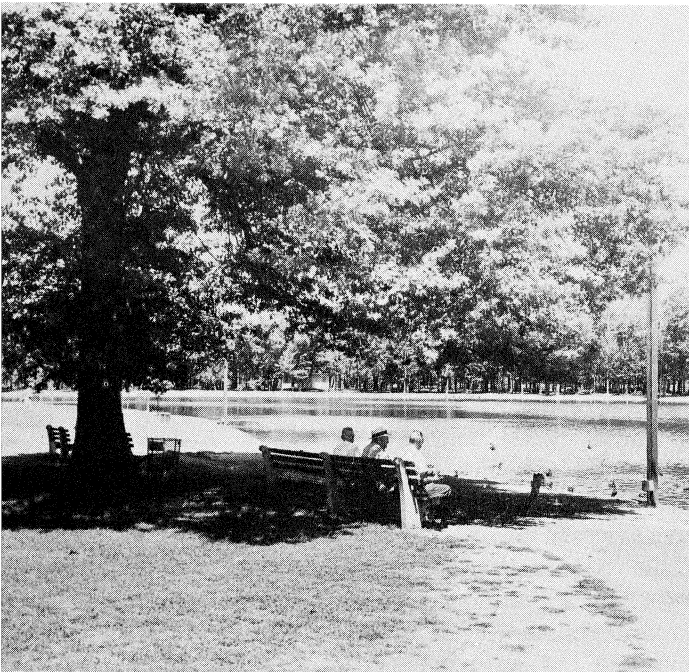
Ice skating is also enjoyed on the Commission semi-artificial 100' x 200' ice rink which is flood-lighted for night skating.



Picnic facilities have been expanded at all parks.



Entrance to Leonia area of Overpeck Park.



Passive recreation.



Picnic area and playfield in North Arlington Park.

Playtime at Dahner's Lake, Garfield.





## Riverside Park North Arlington

The attendance in this area has about doubled this year.

Ice skating was enjoyed during the season and the baseball fields were used by various organized groups to their capacity.

A football and soccer field was made available in this area by popular demand and was in active use during the fall season.

Realizing the increasing number of visitors and the limited parking facilities the Commission during the year constructed a new entrance road and parking lot at the North end of the park. The newly constructed road will serve as a section of the planned park drive adjacent to the Passaic River.

30 picnic tables and 8 fireplaces were added to the picnic groves. An extended water line and drinking fountain were installed by the Commission's maintenance crew as a facility for those desiring to picnic at the North portion of the park.

## Overpeck Park

This is a large 1,000 acre park area surrounded by Englewood, Teaneck, Leonia, Palisades Park and Ridgefield Park.

Small filled-in park sites in 4 areas feature ice

skating, picnicking, ballfields and open play areas.

During 1960 the Overpeck was the source of much activity as work started for the construction of the Bergen-Passaic Expressway. This super highway lamentably cuts the park into several small sections; however, the Commission, aware of the great recreational needs of the residents in this part of the County, has taken steps for the redesign of this vast park site.

As a by-product of the Expressway construction, the Commission negotiated for the stock piling of 1,500,000 yards of fill excavated by contractors from the road-bed for future park construction.

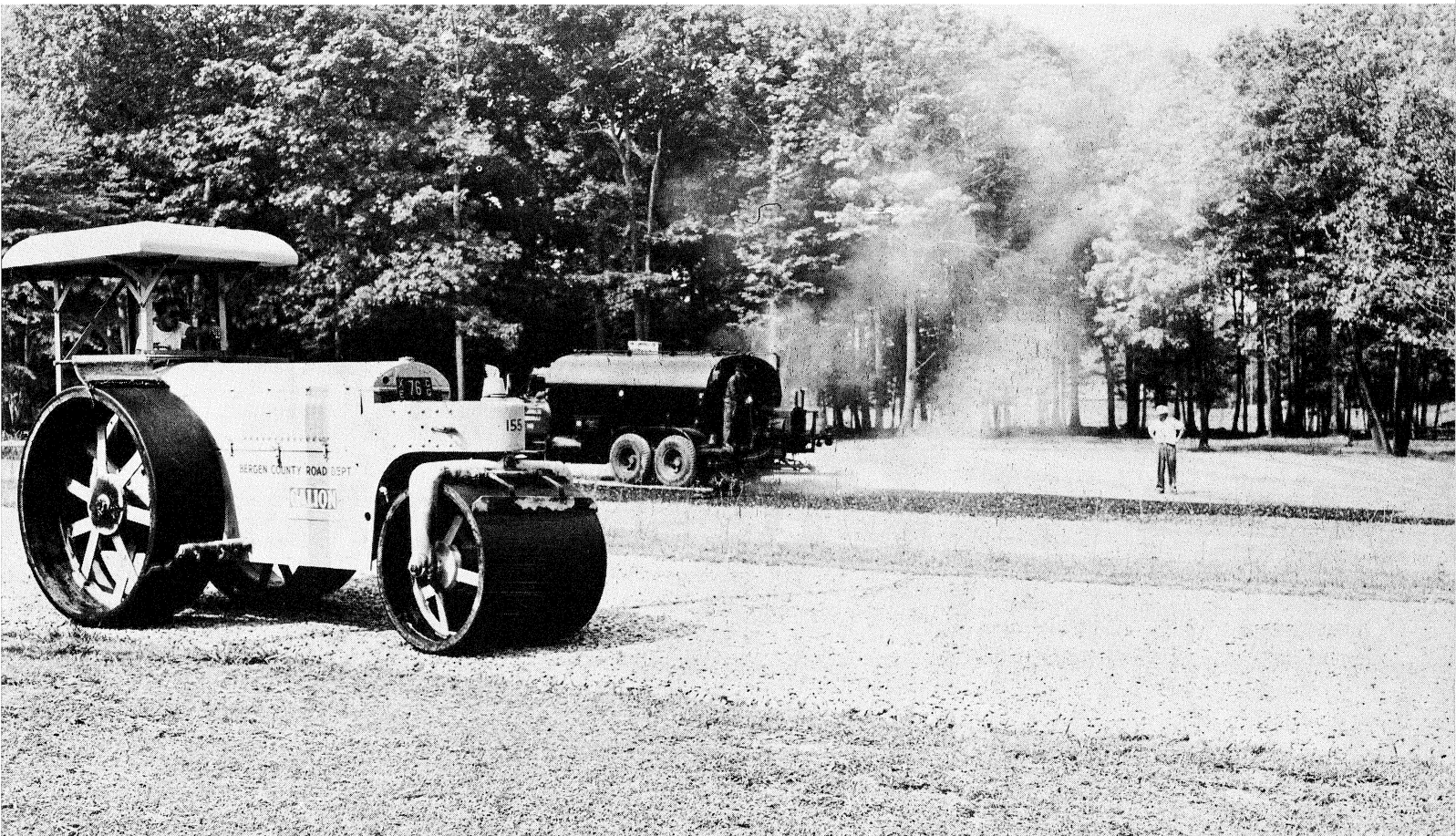
## Roadway And Parking Lot Construction

The Commission realizes that if parks are to be enjoyed, access is as important as acquiring park lands.

The Commission's engineering staff is constantly planning park drives, scenic paths, trails and ample parking facilities, keeping in mind, the attractiveness of the particular area and preserving what natural landscaping is present.

Park drives and parking areas were added at Wild Duck Pond Park, Ridgewood; Van Saun Park, Paramus and River Edge; Riverside Park, North Arlington. The park drive in Riverside Park, Lyndhurst was resurfaced.

Parking lot under construction at Van Saun Park.



## Riverside Park North Arlington

The attendance in this area has about doubled this year.

Ice skating was enjoyed during the season and the baseball fields were used by various organized groups to their capacity.

A football and soccer field was made available in this area by popular demand and was in active use during the fall season.

Realizing the increasing number of visitors and the limited parking facilities the Commission during the year constructed a new entrance road and parking lot at the North end of the park. The newly constructed road will serve as a section of the planned park drive adjacent to the Passaic River.

30 picnic tables and 8 fireplaces were added to the picnic groves. An extended water line and drinking fountain were installed by the Commission's maintenance crew as a facility for those desiring to picnic at the North portion of the park.

## Overpeck Park

This is a large 1,000 acre park area surrounded by Englewood, Teaneck, Leonia, Palisades Park and Ridgefield Park.

Small filled-in park sites in 4 areas feature ice

skating, picnicking, ballfields and open play areas.

During 1960 the Overpeck was the source of much activity as work started for the construction of the Bergen-Passaic Expressway. This super highway lamentably cuts the park into several small sections; however, the Commission, aware of the great recreational needs of the residents in this part of the County, has taken steps for the redesign of this vast park site.

As a by-product of the Expressway construction, the Commission negotiated for the stock piling of 1,500,000 yards of fill excavated by contractors from the road-bed for future park construction.

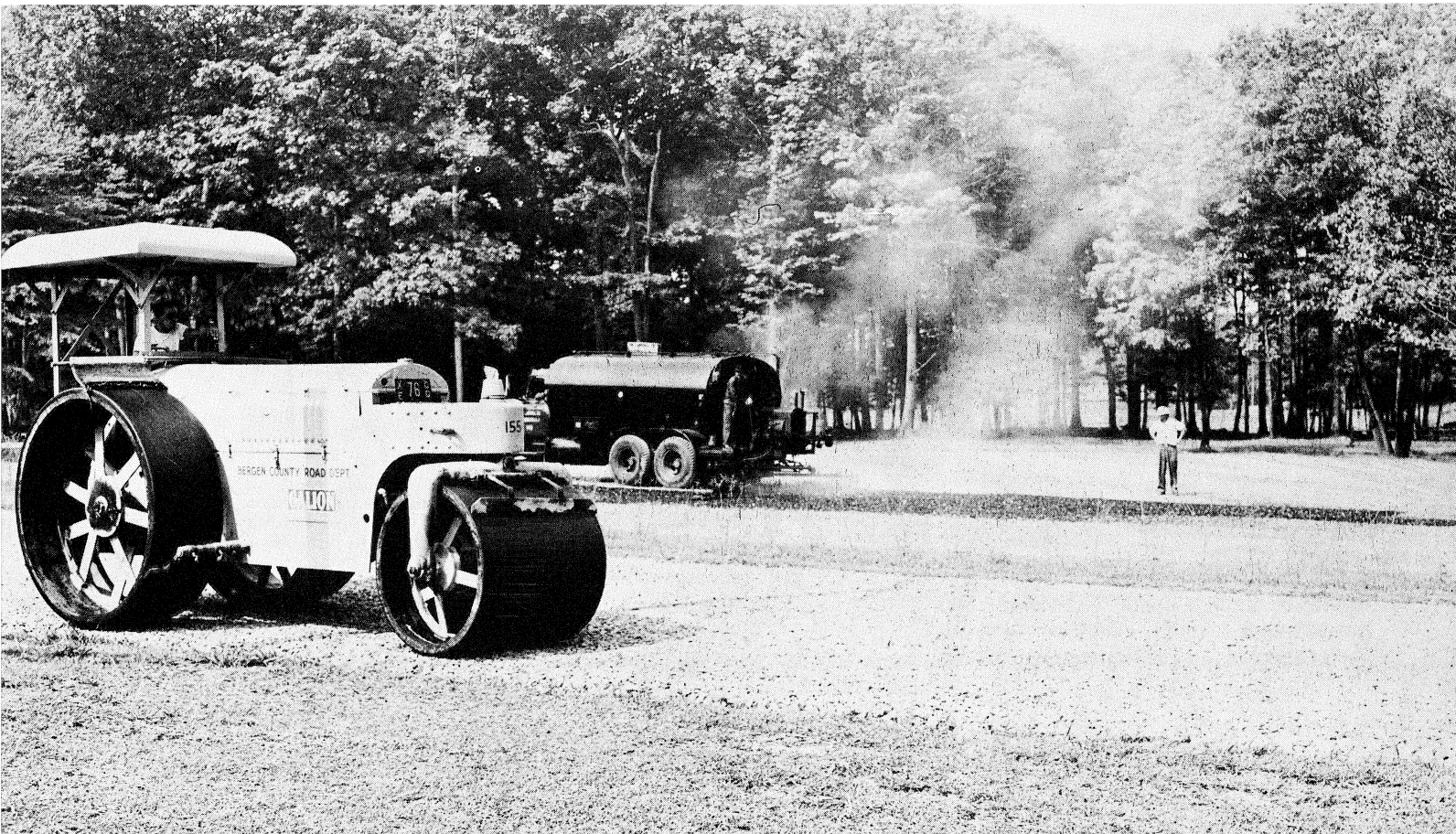
## Roadway And Parking Lot Construction

The Commission realizes that if parks are to be enjoyed, access is as important as acquiring park lands.

The Commission's engineering staff is constantly planning park drives, scenic paths, trails and ample parking facilities, keeping in mind, the attractiveness of the particular area and preserving what natural landscaping is present.

Park drives and parking areas were added at Wild Duck Pond Park, Ridgewood; Van Saun Park, Paramus and River Edge; Riverside Park, North Arlington. The park drive in Riverside Park, Lyndhurst was resurfaced.

Parking lot under construction at Van Saun Park.





BERGEN COUNTY PARK COMMISSION  
*CONDENSED STATEMENT OF PROPERTIES*  
*COMMITTED OR ACQUIRED FOR PARK PURPOSES*  
 BOND AND BUDGET ACCOUNTS

Close December 31, 1960

AREAS	SUB-TOTALS		TOTALS	
	ACREAGE	COSTS	ACREAGE	COSTS
OVERPECK CREEK				
Purchased or Committed .....	125.79	\$180,874.00		
Municipal Properties donated .....	957.06	—0—		
Riparian Rts. Committed .....	—0—	45,311.19		
			1,082.85	\$ 226,185.19
PASSAIC RIVER				
Purchased or Committed .....	49.93	121,321.00		
Municipal Properties donated or Committed .....	81.06	—0—		
			130.99	121,321.00
SADDLE RIVER				
Purchased or Committed .....	495.65	532,830.00		
Municipal Properties donated or Committed .....	46.31	—0—		
Private Properties donated .....	7.87	1.00		
			549.83	532,831.00
SOUTHWEST BERGEN				
Purchased or Committed .....	0.12	2,200.00		
Municipal Properties donated .....	87.53	2.00		
			87.65	2,202.00
VAN SAUN				
Purchased or Committed .....	138.09	194,561.73		
Private Properties donated .....	1.25	—0—		
			139.34	194,561.73
NORTHWEST BERGEN				
Purchased or Committed .....	1,201.58	635,313.71		
Municipal Properties donated .....	2.33	—0—		
			1,203.91	635,313.71
NORTHEAST BERGEN				
Purchased or Committed .....	160.65	127,806.75		
Municipal Properties donated .....	0.32	—0—		
Private Properties donated .....	13.08	—0—		
			174.05	127,806.75
PASCACK BROOK				
Purchased or Committed .....	15.41	44,986.88		
Municipal Properties donated .....	110.00	—0—		
			125.41	44,986.88
PASCACK VALLEY				
Purchased or Committed .....			96.88	208,486.00
HACKENSACK RIVER				
Purchased or Committed .....			0.08	10.00
			3,590.99	\$2,093,704.26

*SUMMARY OF LAND ACQUISITION*

Private properties purchased or committed .....	* 2,284.18	\$2,048,390.07
Private properties donated .....	22.20	1.00
Municipal properties donated or committed .....	1,284.61	2.00
Riparian Rights Committed—45,311.19 linear feet .....	—0—	45,311.19
	3,590.99	\$2,093,704.26

\* The above total of private properties purchased or committed comprising 2,284.18 Acres at a cost of \$2,048,390.07 averages \$896.77 per acre.

BERGEN COUNTY PARK COMMISSION  
**LAND ACQUISITION PROPERTIES COMMITTED OR ACQUIRED**  
 BOND AND BUDGET ACCOUNTS

Close December 31, 1960

DESCRIPTION	SUB-TOTALS		TOTALS	
	ACREAGE	COSTS	ACREAGE	COSTS
PRIVATE PROPERTIES COMMITTED OR ACQUIRED				
Reported close of Dec. 31, 1959 .....	2,001.14	\$1,552,381.07		
Cost of adjustments 1960 .....		+ 1,725.00		
Acreage adjustments 1960 .....	+ 9.07			
PRIVATE PROPERTIES COMMITTED OR ACQUIRED 1960			2,010.21	\$ 1,554,106.07
22 Additional parcels of land with appurtenances were committed or acquired in four areas .....			296.17	\$ 494,285.00
MUNICIPAL PROPERTIES COMMITTED OR ACQUIRED				
Reported close of Dec. 31, 1959 .....	1,288.53	2.00		
Acreage adjustments 1960 .....	- 3.92			
	1,284.61	2.00		
MUNICIPAL PROPERTIES COMMITTED OR ACQUIRED 1960				
None .....	-0-	-0-		
RIPARIAN RIGHTS COMMITTED			1,284.61	\$ 2.00
Reported close of 12/31/59—45,311.19 Linear Feet .....			-0-	45,311.19
			<u>** 3,590.99</u>	<u>\$2,093,704.26</u>

Note:

\*\* Approximately 190.00 acres of park lands in the Overpeck Creek Area are being taken by the State of New Jersey for the Bergen-Passaic Expressway. The exact acreage taken will be deducted after the State definitely establishes the line of the taking.

### AUDITOR'S REPORT

Bergen County Park Commission  
 Administrative Building  
 Hackensack, New Jersey

February 14, 1961

Gentlemen:

I have examined the financial records of the Commission for the year ending December 31, 1960 and, as a result of this examination, I submit the following:

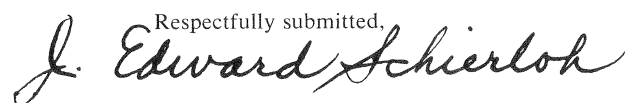
#### BUDGET FUNDS

SURPLUS, JANUARY 1, 1960 .....	\$ 40,778.62
ADD: CANCELLATION OF 1959 COMMITMENTS .....	2,421.70
ADJUSTED SURPLUS, JANUARY 1, 1960 .....	\$ 43,200.32
BUDGET APPROPRIATION—1960 .....	679,225.00
EXPENDITURES:	\$722,425.32
Salaries and Wages .....	\$460,231.08
Office Operating Expenses .....	27,839.56
Engineering and Drafting .....	3,475.04
Land Acquisition .....	1,848.99
Legal Expenses .....	12,000.00
Field Operating Expenses .....	33,989.26
New Field Equipment .....	25,215.62
Park Maintenance Materials .....	147,244.44
	<u>711,843.99</u>
LESS: APPROPRIATION RESERVES—1960 .....	\$ 10,581.33
SURPLUS, DECEMBER 31, 1960 .....	6,107.26
	<u>\$ 4,474.07</u>

#### BOND ISSUES

BALANCE AVAILABLE, JANUARY 1, 1960 .....	\$393,560.20
COUNTY PARK BONDS ISSUED — 1960 .....	580,000.00
LESS:	\$973,560.20
Disbursed and Committed for Land Acquisition and Improvements .....	680,097.01
BALANCE AVAILABLE, DECEMBER 31, 1960 .....	<u>\$293,463.19</u>

All vouchers were examined and found to be properly approved. Checks issued in payment of these vouchers were compared with both the voucher and the entry in the financial records. These were found to be correct.  
 Cash in banks was reconciled with the book figures.

Respectfully submitted,  


Certified Public Accountant  
 (N. J. & N. Y.)



*MAJOR ACCOMPLISHMENTS — 1960*

Acquired 300 Acres Additional Park Land

Completed County Tennis Center

Completed Children's Zoo

Constructed Two Large Comfort Stations

Added New Park Drive and Parking Facilities in three Areas

More Picnic Areas For All Parks

Extensive Tree Planting Program Completed

Erected Building for Heavy Equipment

Began Initial Development Of Two New Parks

