

BERGEN COUNTY'S PARK PROGRAM

BERGEN COUNTY PARK COMMISSION

Twelfth Annual Report — 1958

A. Thornton Bishop

On October 2, 1958, Bergen County suffered the loss of A. Thornton Bishop. Mr. Bishop had been a member of the Park Commission since 1946. In 1947 he was elected vice-president of the Park Commission and in 1950 became its president.

Editor, actor, artist, author and teacher, Mr. Bishop was born in New Haven and began his career as an art and architectural student, studying art at Pratt Institute in Brooklyn and architectural design at the Atelier Wyncoop in Paris, and in England and France.

Mr. Bishop taught painting at the Grand Central School of Art and at Hunter College and published a number of books, including "Renaissance Architecture in England" and "Composition and Rendering."



Cut Out.

In submitting this Annual Report of recreational facilities, the Bergen County Park Commission has summarized its developed park areas now open to the public.

Attendance has reached the half million mark and, with the opening of the Rockleigh Golf Course, scheduled for 1959, we have achieved a major goal in our recreational program.

With the continued co-operation of the Board of Chosen Freeholders, further progress will be made to complete additional areas.

Very truly yours,


Harold J. Hollenbeck
President

Photos cut out.

BERGEN COUNTY PARK COMMISSION

1958

A. Thornton Bishop, President
Harold J. Hollenbeck, Vice President
William Staubach, Secretary
Alvin G. Yhlen, Assistant Secretary
Harold M. Davison
Walter Marut
Arthur Seward
Dr. George L. Kingslow
Mrs. William F. Higgins
Herbert H. Handelsmann
Staff Director
George A. Duffy
Counsel

OFFICES

Administrative Building Hackensack New Jersey

BOARD OF CHOSEN FREEHOLDERS

1958

Fred W. Meuter, Director
E. Merrill Seaberg
Edmund E. Field, Jr.
John K. Pollitt
Peter W. Passaro
Mrs. Wilma Marggraff
Anthony Pepe
Arthur W. Vervaet
Gordon H. Brown
(resigned May 22, 1958)
Walter M. Neill
(resigned July 15, 1958)
Henry Deissler
(resigned April 1, 1958)
William R. Smith, Clerk of the Board
Milton T. Lasher, County Counsel

What Has Been Accomplished

The following facilities have been created by the Park Commission:

An 18-hole golf course, and modern clubhouse.

A flood control basin on the Saddle River at Saddle Brook.

One and three quarter miles of the Saddle River relocated.

A Museum of Arts and Sciences in Teaneck.

Thirteen ball fields in 16 park areas; one soccer field.

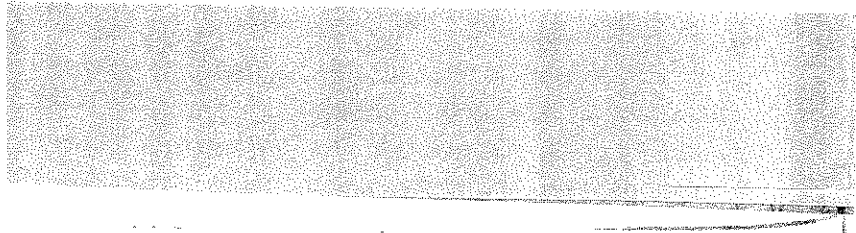
Two football fields; four day camps.

Two small children play areas; seven picnic areas.

A large horse show paddock; three miles of bridle path.

Five ice skating areas; four lakes; a formal rose garden.

A school for training equestrians.



Cut

Cut

Cut
out

Rockleigh Golf Course - Rockleigh

The Rockleigh Golf Course, one of the accomplishments of the Bergen County Park Commission, was opened for public use April 1.

Construction of the course, set in one of the most picturesque parts of the County, began in May 1957. It is composed of 173 acres. It is designed as a full 18 hole course with a practice Green and clubhouse.

It is planned that the season for playing will be during the period between April 1, and December 1, weather permitting.

The Clubhouse is of modern construction. Building began in December, 1957 and was completed in December, 1958. It contains many features of convenience and accommodations. The women's locker room, which contains showers, powder room, etc., covers 780 square feet. The men's locker room, showers, etc., covers an area of 1,469 square feet. There is a total of 426 lockers installed.

In addition, the building is equipped with caddy room, pro shop, a complete first aid room, a club stor-

Memorial Field - Garfield

This park area contains two baseball fields and a football field with a well formed background in landscaping.

With the ever increasing demand for baseball and football facilities, this County park is in great demand.



Riverside Park - North Arlington

This former swamp land and refuse disposal area has been developed into a picnic and athletic area park.

There are now a parking lot, three ball fields, a safe ice skating rink, a model aeroplane field, a miniature train ride, a tree shaded picnic area, acres of open lawn, and a modern comfort station.

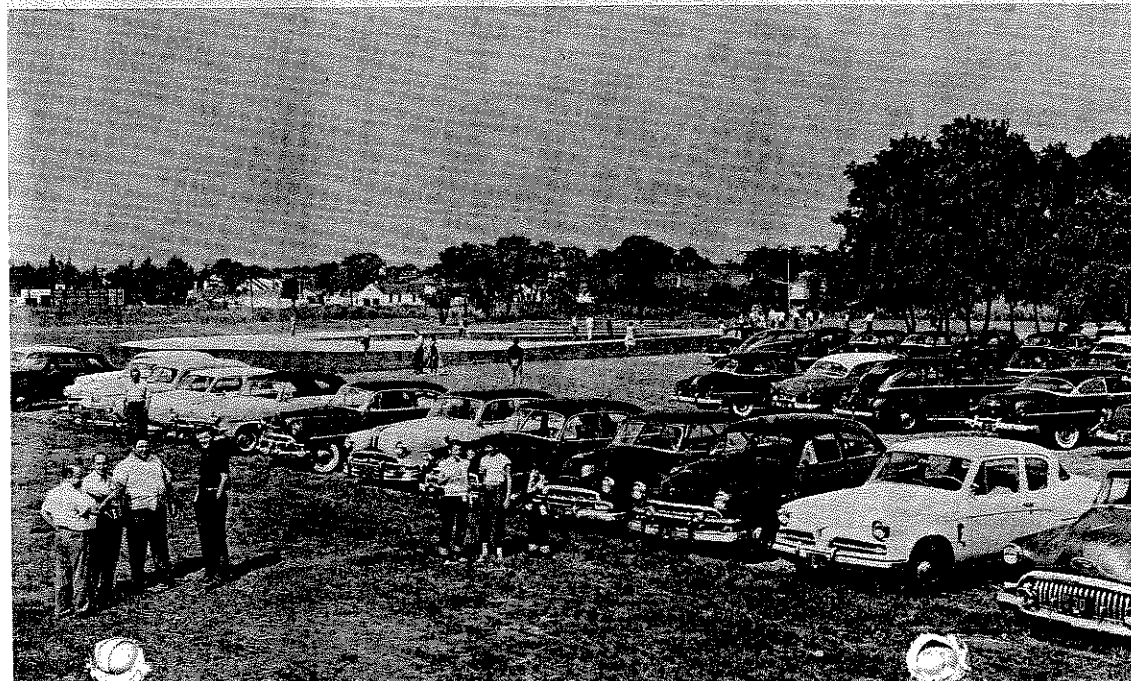
*50
wonder*

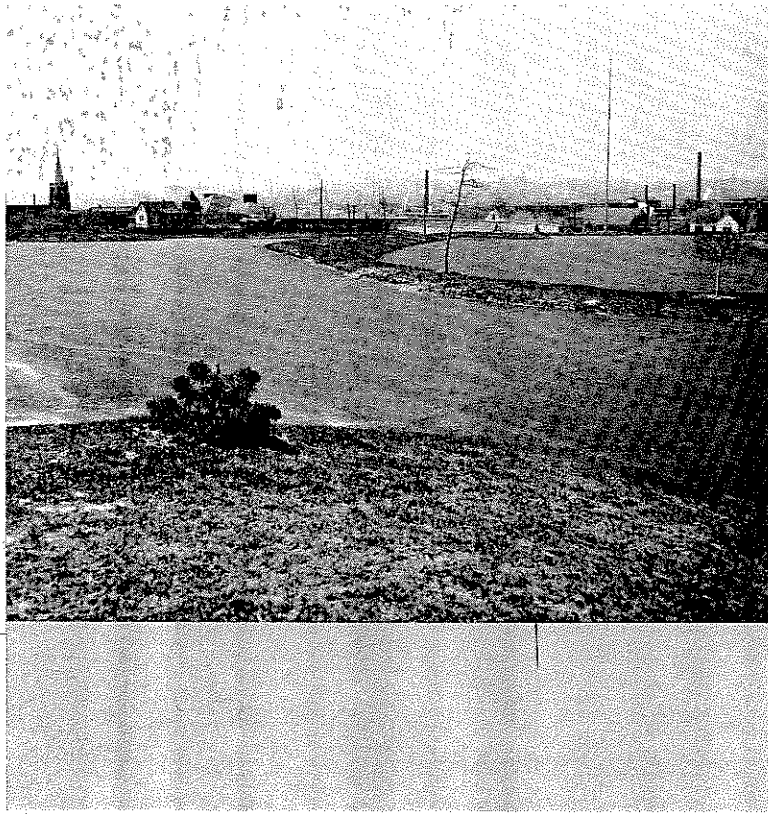
Lodi

This small, former swamp area along the Saddle River has been converted into a tree-shaded recreation area and ball field, complete with back stop and park benches.

Belmont Oval

Baseball facilities are in constant demand in this area by local groups. A regulation back stop has been erected and benches supplied for players.





Dahnerts Lake - Garfield

Here is a picturesque lakeside area abundantly dotted with trees and flowering shrubs inviting peace and quiet.

Park benches are provided along the paths of the lake. Children enjoy the water with their toy motorized boats. Contests are sponsored by interested local citizens.

During the winter ice skating attracts the recreational minded, both young and old.

It is estimated that 2,000 skaters enjoy this facility daily during the season.

Belmont Hill

The colorful rose garden is the main attraction during late spring and summer in this County park.

Thousands of blooms in an array of colors are concentrated in a circular bed with each plot exhibiting a rose of a named variety, with a path system where the visitor can inspect the roses at close range.

A macadam park drive gives easy access to the display with ample parking facilities.

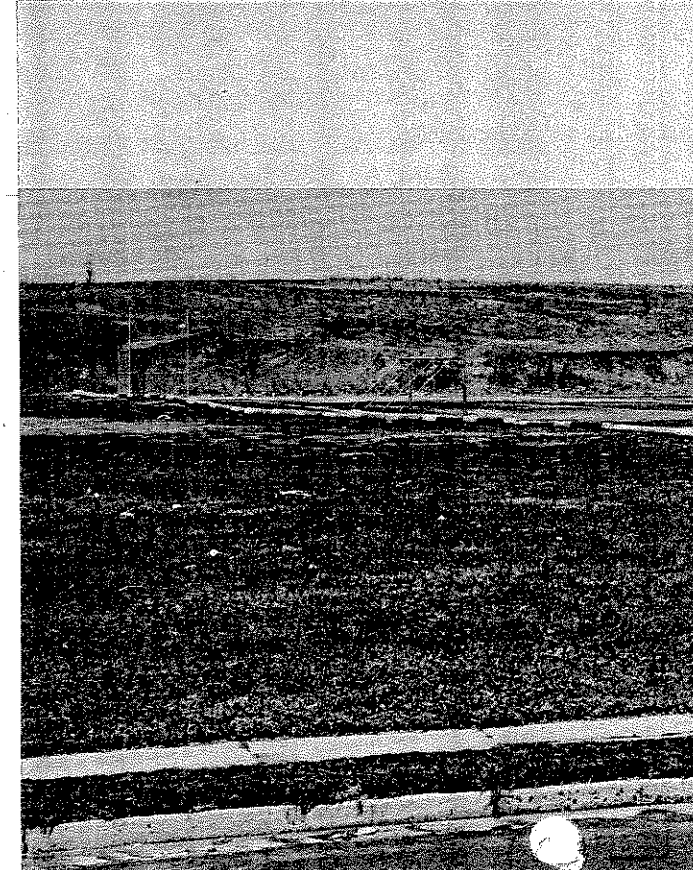
Benches have been provided and a children's playground with swings, sand pit, slides, and other facilities.

Twentieth Century Field, Garfield

Soccer games add to the attraction in this field. A regulation size baseball diamond is also well booked during the play season by local groups.

These fields are regraded, fertilized, reseeded, and played each season.

A merit award in the form of a trophy was presented the Commission for outstanding promotion of good will and service in this area.

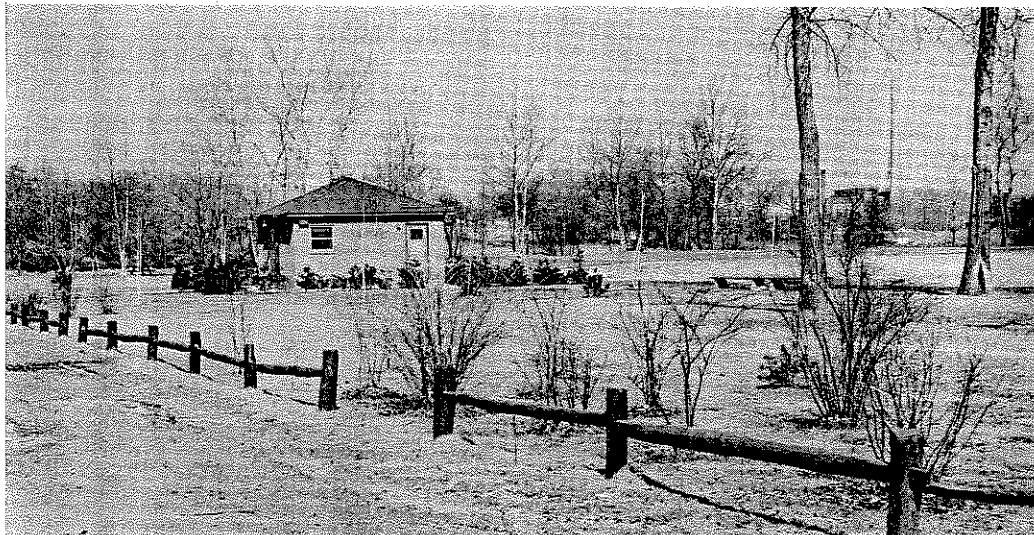


Cut OUT.

Leonora

This section of the Overpeck area is becoming more popular annually and added recreational facilities are being demanded. Additional fire-places, picnic tables and benches were installed during the year.

The baseball diamond was in constant use and the ice rink also proved popular. Flood lights were installed at the ice rink, which will be maintained as a model boat marine base during the summer months for the small fry.



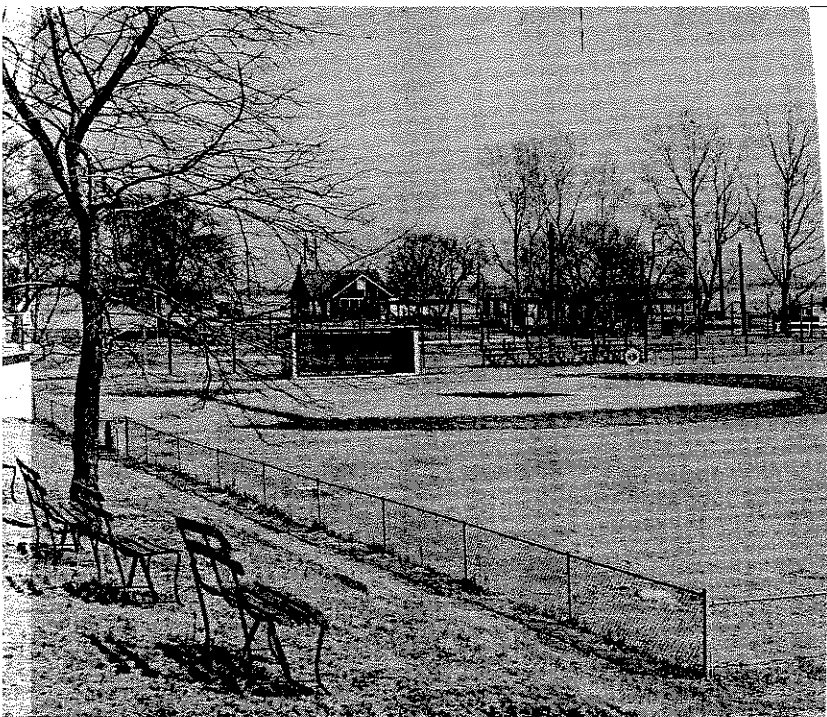
Riverside Park, Lyndhurst

A few years ago this was an area of swamps and sterile sand fill from the Passaic River. Planting, grading, landscaping created a good ball field, tree shaded picnic areas, roads and paths. Parking fields and a comfort station were built.

This area was the site of the Boy Scout Camporee and attracted thousands of visitors.

It is constantly used for group picnics, camporees, baseball, and other sports. Plans to extend the picnic facilities are now on the drawing board.

Three water lines with drinking fountains were installed during the past year.

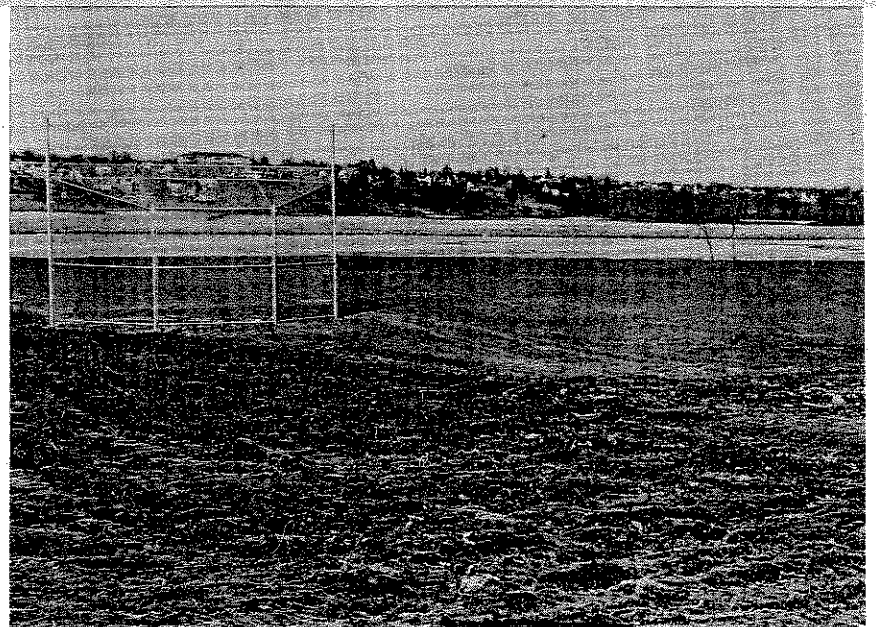


Cut out.

Overpeck - Palisades Park

Replacing a refuse disposal area with fill obtained from the Overpeck, has made possible the construction of a recreation center consisting of a baseball field and a skating rink.

A park drive with turn-around was installed and drive-way lights installed. Park benches are available in the recreational and ball field areas.



5-

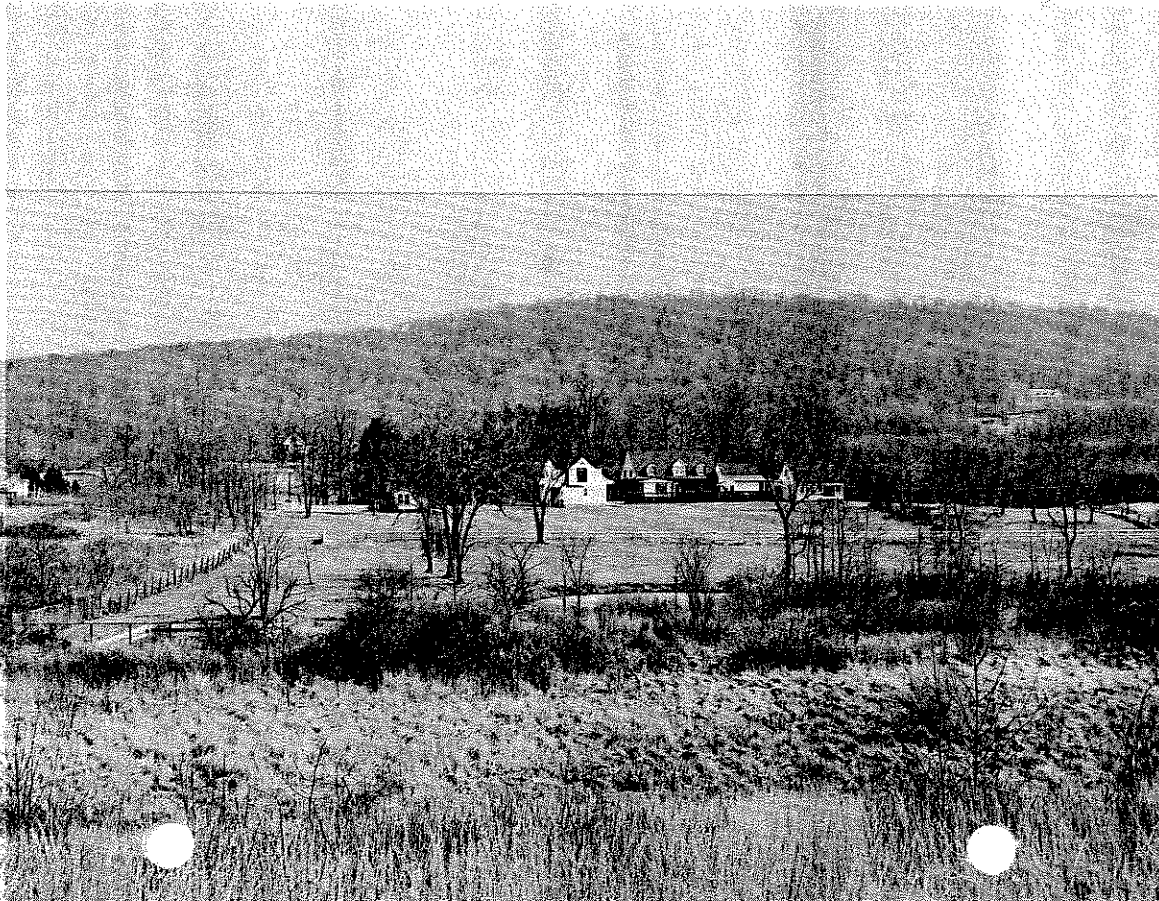
Overpeck - Jeaneck

The DeGraw Avenue ball field with back stop parking lot also once served as a refuse disposal :

Constant regrading of the diamond and field necessary to maintain the field in proper form.

Extension of this area is planned just as soon settlement of the surface soils is established.

Cut
out.



Campgaw Mountain - Mahwah

Four of 300 acres of natural, undeveloped land was cleared and cultivated, and a tree and shrub nursery established. Named varieties of oaks, maples, dogwood, and other trees, together with many flowering shrubs are being grown for present and future use in all park areas. A boys' day camp under adult supervision enjoys this area annually.

Saddle River - Saddle Brook

A well managed row-boating operation can now be enjoyed in this park during the summer season. There also are picnic facilities in a well shaded grove bordering the Saddle River.

Park Commission dredging operations have cleared the river banks effecting a safe, gradual grade and the fill transported to low areas in this location.

A flood control basin creating a beautiful lake, relieved this area from flooding and has added a picturesque landscape dotted with shade trees.

A baseball field of regulation size is in constant demand in this area.

Plans are being drawn for a skating rink at the north entrance of the park.

Van Saun - Paramus and River Edge

1958

This centrally located park of 140 acres with its naturally wooded entrance off Forest Avenue, Paramus gives the visitor an immediate restful effect upon entering. Picnic facilities are available with fireplaces and picnic tables in well shaded areas. A regulation archery range is maintained. The annual Christmas display was extended to 2¾ acres of appropriate exhibits and drew the attraction of an estimated 16,000 visitors. Ample parking space is provided.

The extended show paddock to meet national regulations was completed this year and an added entrance bridge over the Van Saun brook was constructed. The Bergen County Cerebral Palsy Horse Show was a high-light of the year.

The park drive from Forest to Continental Avenues, with the necessary drainage system, has been completed.



Saddle River - Ridgewood

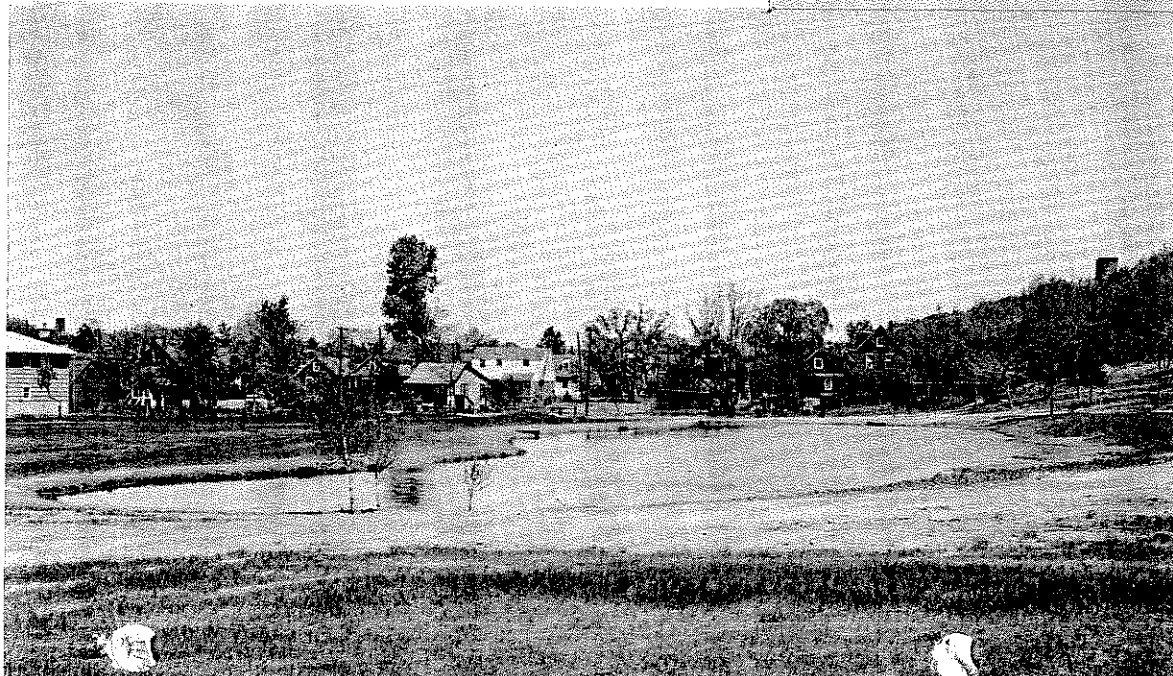
Wild Duck Pond Park is one of the most popular County Parks.

The flow of the Saddle River to the east of the park, with a background of trees and flowering shrubs, affords a restful atmosphere. Ample picnic facilities including fire places and picnic tables are available. Because of the increased influx of visitors, an additional parking lot was constructed in the north area of the park drive.

A day camp operated by the Girl Scouts is active annually during the summer months. A fishing contest sponsored by local civic organizations creates additional interest in this area.

Ice skating is the main attraction during the winter months. The area is lighted during the evening hours.

Approximately 2,000 persons use the park daily. Plans call for clearing the pond of silt to a depth of 4 feet, for sustaining fish life. The depth would be controlled by an adjustable dam.

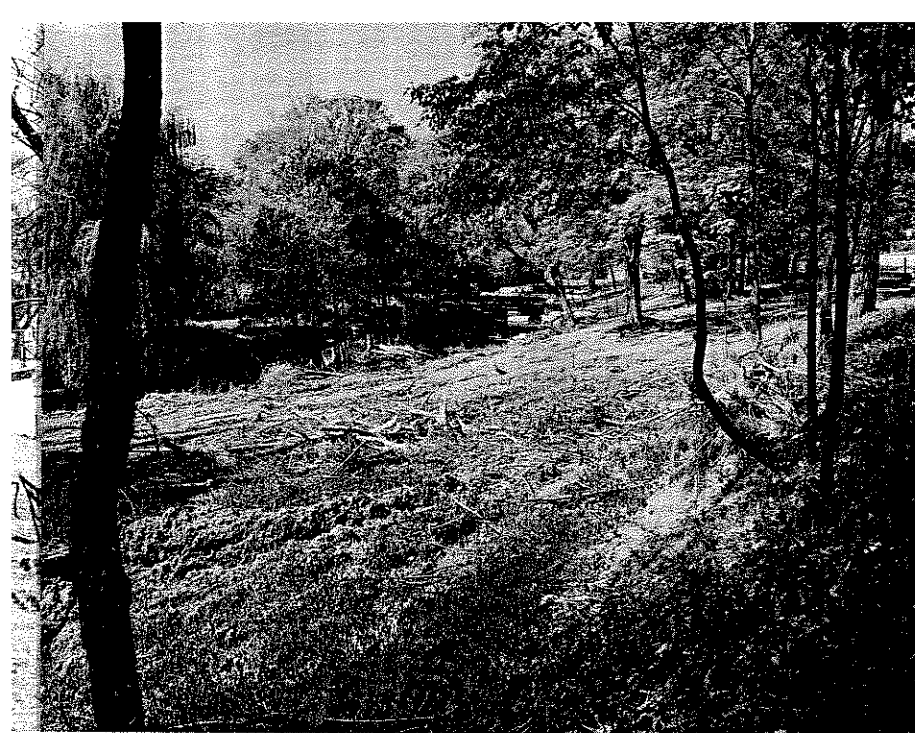


Wallington

This 17 acre area was an unusable hillside with swamps at the base, fed by hillside springs.

Today there are acres of lawns, a picnic grove with fire places and tables, a spring-fed pool, a ballfield, paths, and water fountain.

Skating is enjoyed by the small fry and sledding is also an added winter attraction.



Westwood - Overbrook Park

This area of 3 acres was designed for both recreation and as a bird sanctuary.

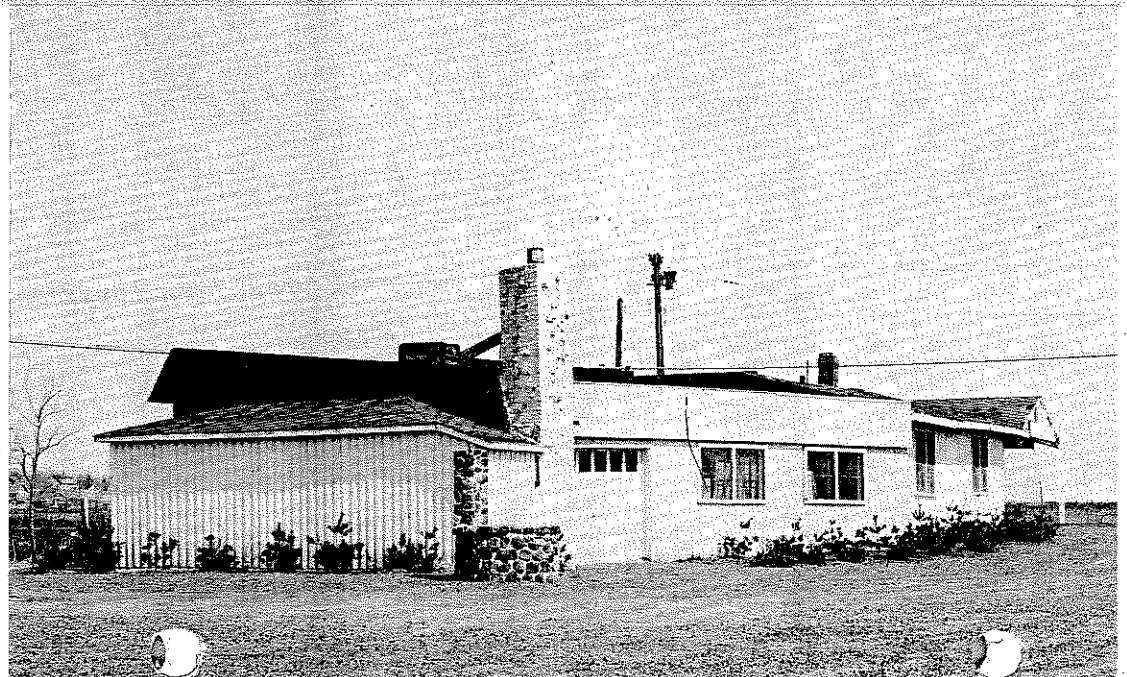
Constructed adjacent to the rippling Pascack Brook with a winding path system, it affords a restful atmosphere. Benches are available for the visitor to observe the wild life attracted to this area.

Overpeck - Community Museum

Under the able leadership of Mrs. Selina Johnson, a Community Museum was temporarily located in a renovated Park Commission building on Fort Lee Road, Teaneck.

Art exhibits, of wood cuts, etchings, color lithographs, and bird and animal identification charts and displays are available for study.

A total of 11,522 visitors viewed the exhibits and displays during the year.



Park Commission

In the Commission's shop at Ridgewood, maintenance crews during inclement weather constructed, painted and lettered 130 signs ranging from 4 inches to 8 feet in size, constructed 55 combination picnic tables and benches, 19 backless benches, and 8 small-animal shelters for the proposed Zoo in Van Saun Park.

Maintenance crews distributed to various County parks 7,000 pounds of various types of grass seed mixtures, 45,060 pounds of mixed fertilizers and 77,200 pounds of pulverized limestone. Employees also installed 1,769 feet of split rail fencing.

Park grading operations required the transportation of 43,359 yards of fill and the installation of 264 feet of reinforced concrete pipe. More than 400 trees were dug, balled, burlapped and transplanted to various areas.

As additional park areas are opened to the public and more facilities provided attendance increases. During 1958 more than 600,000 persons used the County Parks.

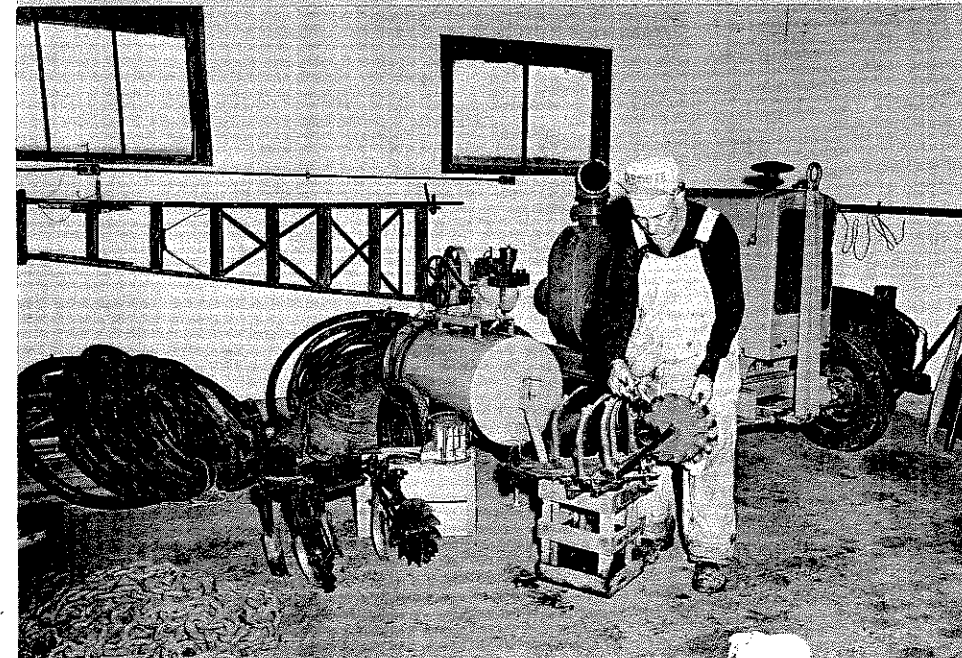
Recreational permits were issued to 528 organized groups, requesting camping locations, ball fields, and picnic grounds.

Land Acquisition

At the beginning of the year 1958, the County of Bergen had acquired approximately 3,210 acres of land for park purposes lying within the boundaries of twenty-seven Municipalities and well located throughout the County.

During the year approximately 42.82 additional acres were acquired bringing the total to 3,252 acres.

In anticipation of the continued growth of Bergen County and the future needs for park and recreational areas, the Park Commission is making an extensive survey of the entire County for additional park lands.



The Park Commission's shop at Ridgewood

LAND ACQUISITION STATEMENT

PROPERTIES COMMITTED OR ACQUIRED — BOND & BUDGET ACCOUNTS — Close December 31, 1958

Description	SUB-TOTALS		TOTALS	
	Acres	Cost	Acres	Cost
PRIVATE PROPERTIES COMMITTED OR ACQUIRED				
Reported close December 31, 1957	1932.60	\$1,417,575.07		
Cost of Adjust- ments 1958	-	48,062.00		
Acreage Adjust- ments 1958	8.26			
			1924.34	\$1,369,513.07
COMMITTED OR ACQUIRED 1958				
25 additional parcels of land with appurtenances were committed or acquired in six (6) areas			42.82	\$ 100,098.00
MUNICIPAL PROPERTIES ACQUIRED				
Reported close Dec. 31, 1957	1283.24			
Adjustments made 1958	- o - +	2.00		
	1283.24	2.00		
Municipal Properties Committed 1958	2.35	- o -	1285.59	2.00
RIPARIAN RIGHTS				
Reported close Dec. 31, 1957				
45,311.19 Lineal feet			45,311.19	
			3252.75	\$1,514,924.26

AREAS	SUB-TOTALS		TOTALS	
	ACRES	COST	ACRES	COST
OVERPECK CREEK				
Purchased or committed for	125.79	\$180,874.00		
Municipal properties donated	957.06	- o -		
Riparian Rights	- o -	45,311.19		
			1082.85	\$ 226,185.19
PASSAIC RIVER				
Purchase or committed for	50.46	\$121,321.00		
Municipal properties donated	82.51	- o -		
			132.97	\$ 121,321.00
SADDLE RIVER				
Purchased or committed for	483.95	\$529,830.00		
Municipal properties donated	46.02	- o -		
Private properties donated	6.12	1.00		
			536.09	\$ 529,831.00
SOUTHWEST BERGEN				
Purchased or committed for	0.12	\$ 2,200.00		
Municipal properties donated	90.	2.00		
			90.12	\$ 2,202.00
VAN SAUN				
Purchased or committed for	138.09	\$194,561.73		
Private properties donated	1.25			
			139.34	\$ 194,561.73
NORTHWEST BERGEN				
Purchased or committed for			927.75	\$ 183,094.21
NORTHEAST BERGEN				
Purchased or committed for	160.65	\$127,806.75		
Private properties donated	13.08	- o -		
			173.73	\$ 127,806.75
PASCACK BROOK				
Purchased or committed for	9.14	\$ 32,046.38		
Municipal properties donated	110.	- o -		
			119.14	\$ 32,046.38
PASCACK VALLEY				
Purchased or committed for.....			50.68	\$ 97,866.00
HACKENSACK RIVER				
Purchased or committed for.....			.08	\$ 10.00
			3252.75	\$1,514,924.26
GRAND TOTAL				

SUMMARY OF LAND ACQUISITION

Private properties purchased or committed	1946.71	\$1,469,610.07
Private properties donated	20.45	1.00
Municipal properties donated	1285.59	2.00
Riparian Rights committed for 45,311.19 lineal feet	- o -	45,311.19
TOTAL	3252.75	\$1,514,924.26

AUDITOR'S REPORT

March 4, 1959

BERGEN COUNTY PARK COMMISSION
ADMINISTRATION BUILDING
HACKENSACK, NEW JERSEY

GENTLEMEN:

I have examined the financial records of the Commission for the year ending December 31, 1958 and, as a result of this examination, I submit the following:

BUDGET FUNDS	
SURPLUS, JANUARY 1, 1958	\$ 63,914.86
ADD: SURPLUS ADJUSTMENT	289.62
ADJUSTED SURPLUS, JANUARY 1, 1958	\$ 64,204.48
BUDGET APPROPRIATION	516,000.00
	<u>\$580,204.48</u>
EXPENDITURES:	
Salaries and Wages	\$363,800.57
Office Operating Expenses	20,800.14
Engineering, Drafting and Design	8,337.30
Land Acquisition Expenses	4,318.41
Field Operating Expenses	32,002.95
New Field Equipment	5,031.41
Legal Expenses	18,000.00
Park Maintenance Materials	67,358.93
Capital Improvements	36,498.52
	<u>556,148.23</u>
	<u>\$ 24,056.25</u>
LESS: FUNDS RESTRICTED FOR FUTURE CAPITAL IMPROVEMENTS ..	10,498.29
SURPLUS, DECEMBER 31, 1958	<u>\$ 13,557.96</u>

BOND ISSUES	
AVAILABLE BALANCE AND COMMITMENTS, JANUARY 1, 1958	\$751,314.85
NEW AUTHORIZATION IN 1958	166,000.00
	<u>\$917,314.85</u>
LESS:	
Disbursed for Land Acquisition and Improvement	\$422,559.32
Committed for Land Acquisition and Improvement	130,584.99
	<u>553,144.31</u>
BALANCE AVAILABLE, DECEMBER 31, 1958	<u>\$364,170.54</u>

All vouchers were examined and found to be properly approved. Checks issued in payment of these vouchers were compared with both the vouchers and the entries in the financial records. These were found to be correct.

Cash in banks was reconciled with the book figures.

Respectfully submitted,

J. EDWARD SCHIERLOH
CERTIFIED PUBLIC ACCOUNTANT
(N. J. & N. Y.)

